
Baldi Corner Annexation Rezoning

City Council

May 1, 2018

Patrick Streeter, Senior Planner
Planning and Economic Development

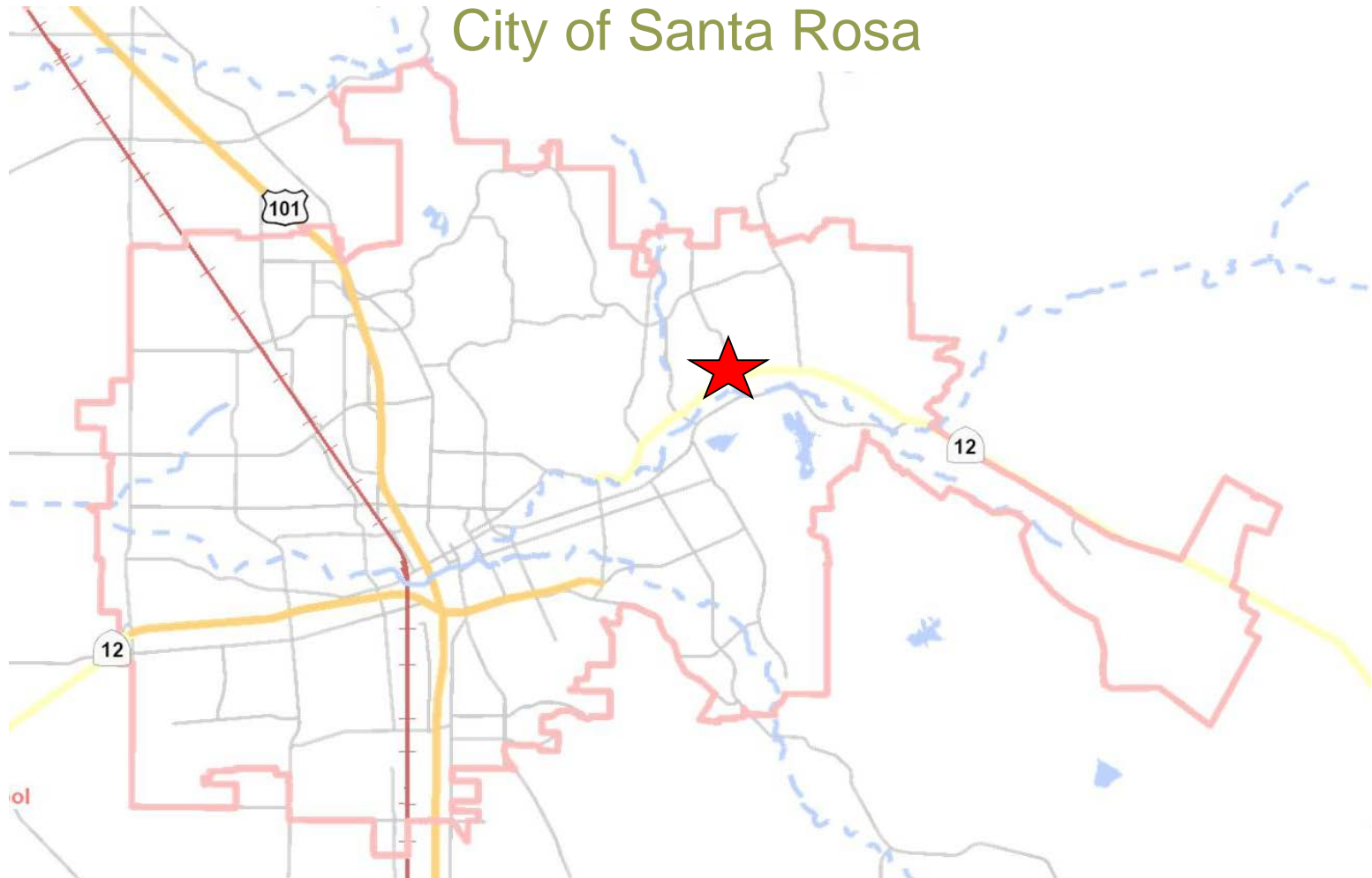
Project Description

Prezone nine parcels, 7.9 acres, to the R-1-6 and CG zoning districts

- City's role in the Annexation process is Prezoning
- Identify the boundary
- Identify the appropriate zoning district

Project Location

Middle Rincon Road & Highway 12



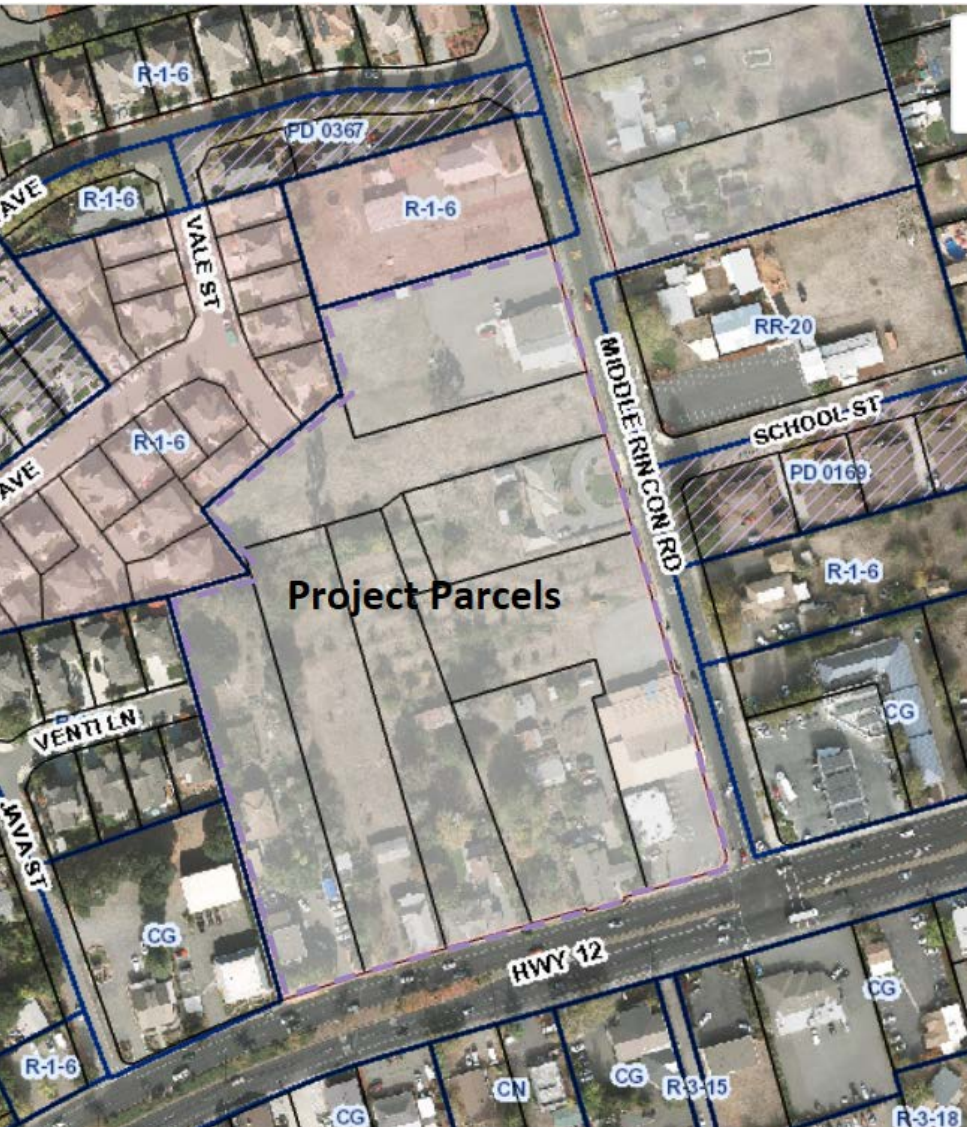
Project Location Middle Rincon Road & Highway 12



Project History

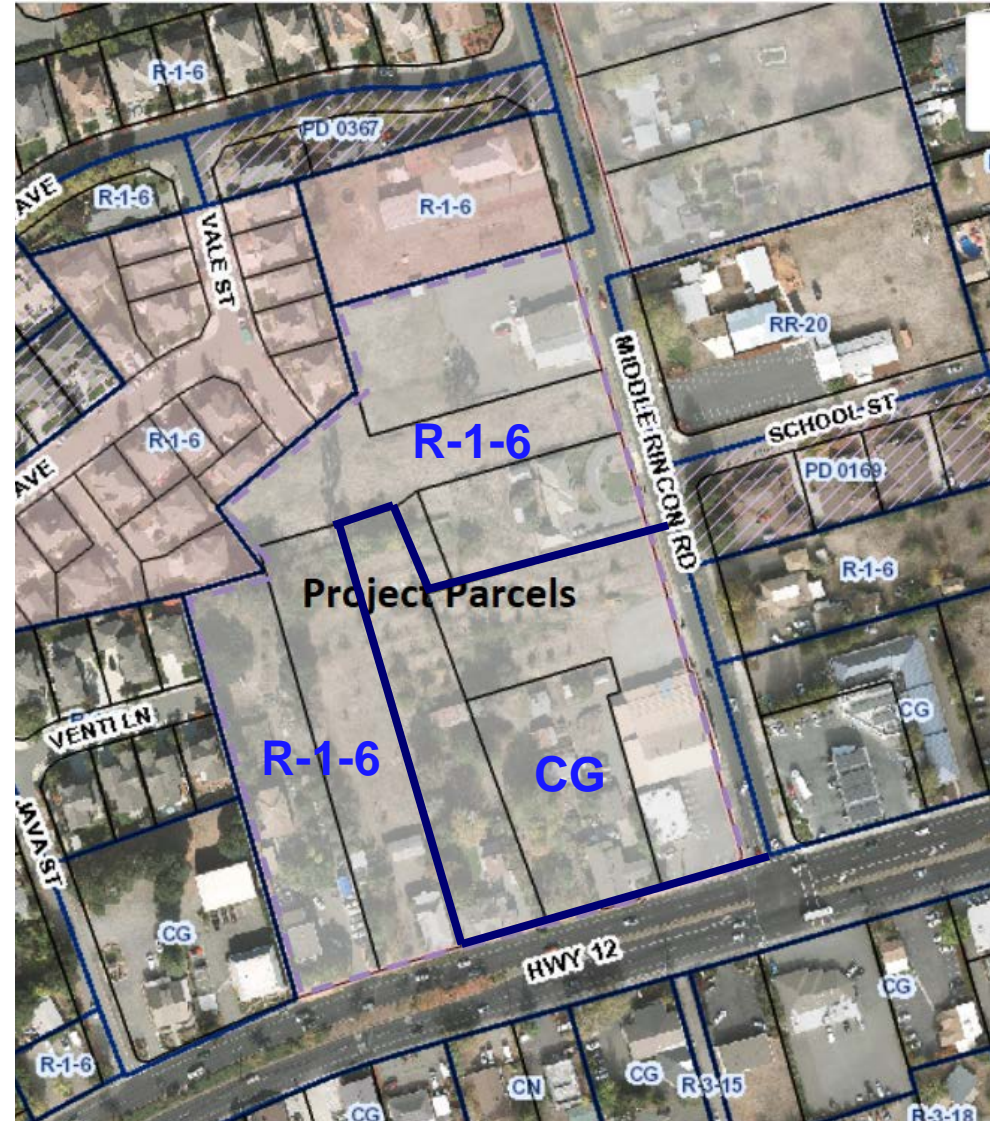
- February 7, 2017 – Application submitted
- February 27, 2017 – Application referred to City departments and outside agencies for comment

- June 26, 2017 – All comments received, application deemed complete
- August 24, 2017 – PC recommends approval
- January 30, 2018 – Council hearing continued to future date



- County island
- Residential to north, commercial along Highway 12 corridor

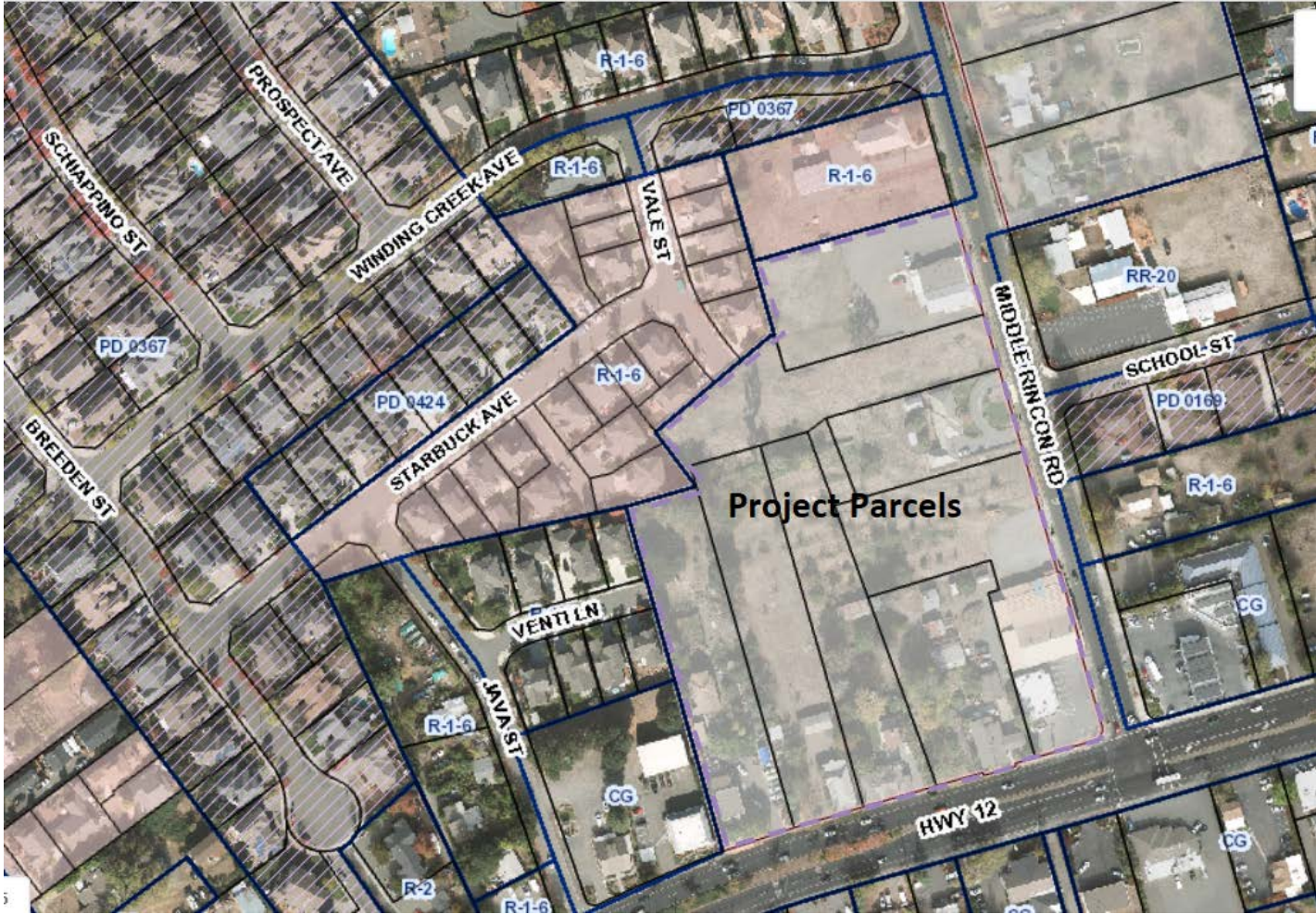
- Low Density Residential (2 – 8 units/acre)
- R-1-6
- Retail and Business Service
- CG



Environmental Review California Environmental Quality Act (CEQA)

The Rezoning proposal has been reviewed pursuant to CEQA:

- Consistent with densities established in General Plan
- No new development proposed – no project specific impacts
- No additional environmental review required (Sec. 15183)



Recommendation

It is recommended by the Planning and Economic Development Department and the Planning Commission, that the Council, by resolution, introduce an ordinance for the Rezoning of the properties located at 43, 77, and 91 Middle Rincon Road and 4785, 4801, 4847, and 4865 Highway 12 to the R-1-6 (Single-family Residential) and CG (General Commercial) zoning districts.

Questions

Patrick Streeter
Senior Planner
Planning and Economic Development
PStreeter@srcity.org
(707) 543-4323

