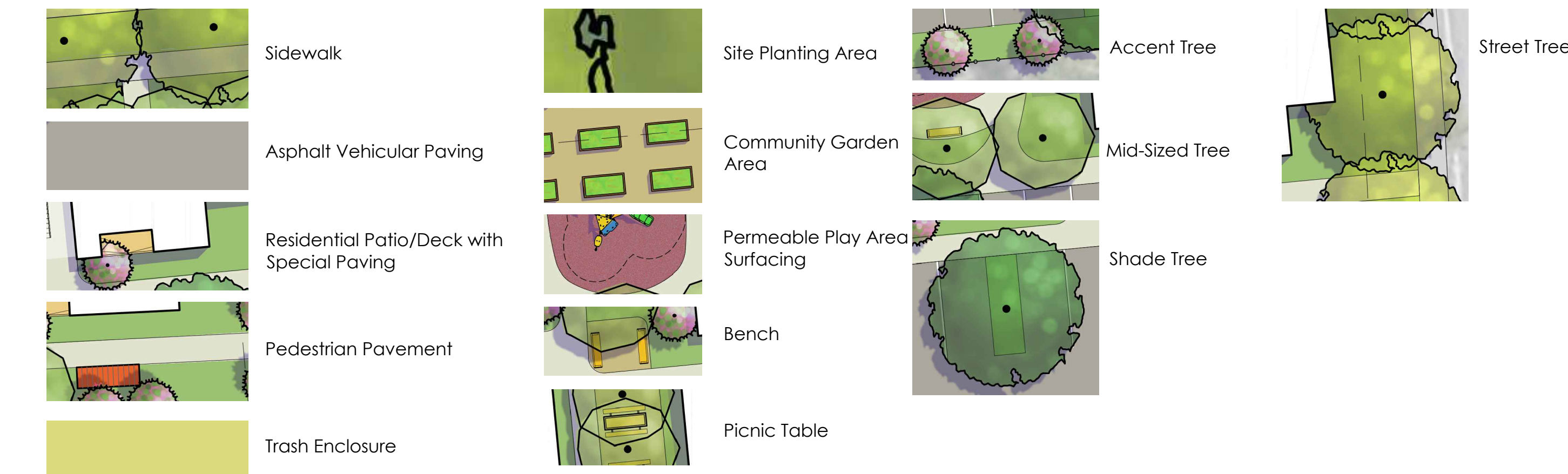




SITE LEGEND



TREE MITIGATION

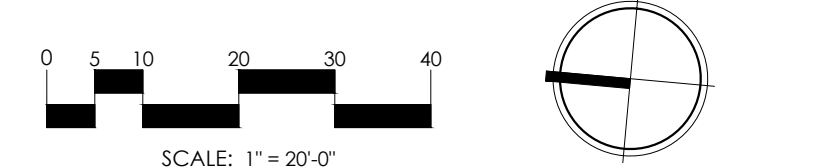
SYMBOL	TREE MITIGATION SUMMARY
	<p>OAK TREES TO BE REMOVED</p> <ul style="list-style-type: none"> (1) 36" Valley Oak (1) 24" Valley Oak <p>60" TOTAL TRUNK DBH REMOVED</p>
	<p>(10) 24" BOX VALLEY OAK TREES ARE PROPOSED</p> <p>(20) 15-gal Valley Oaks are to be planted for full tree mitigation per City of Santa Rosa Code 17-24.050 Permit Category II: C(1) and C(2)</p>

IRRIGATION CONCEPT & STATEMENT OF COMPLIANCE

All irrigation and planting design will comply with the criteria of local and state Water Resources Model Water Efficient Landscape Ordinances and will apply them for the efficient use of water in the landscape design plan.

- Weather based, self-adjusting irrigation controller with a weather sensor.
- Emitters to include subsurface drip irrigation and tree bubblers.
- Trees to be placed on separate valves.
- Isolation valves to be installed at point of connection and before each valve or manifold.
- Pressure regulation to be installed.
- Separate valves to be installed to irrigate zones of medium and low water use plantings.
- Check valves will be installed to prevent low point drainage.

PERIMETER FENCE

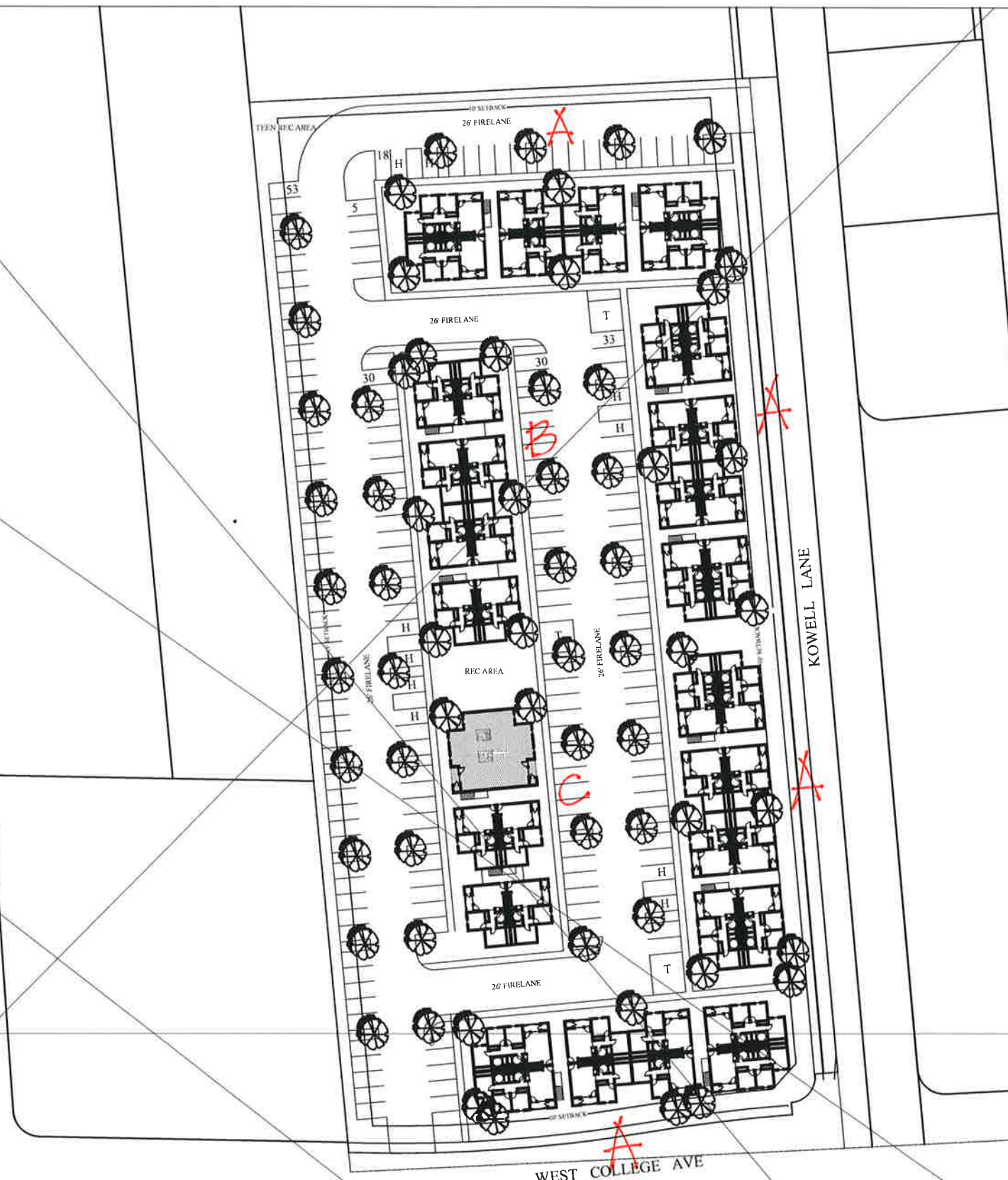


QUADRIGA
 landscape architecture and planning, inc.
 sacramento | santa rosa
 707.546.3561 | www.quadriga-inc.com

July 15, 2021

AVIARA AFFORDABLE HOUSING
 1385 West College Ave.
 Santa Rosa, CA
 Concept Design Landscape Site Plan
 L1.0

City of Santa Rosa
 Planning & Economic Development Department
 Jul 15, 2021
 RECEIVED



A PLAN 1: 48
 PLAN 2: 48
 B PLAN 1: 24
 C PLAN 1: 12
 PLAN 2: 4
 TOTALS: P1: 84
 P2: 52
 TOTAL UNIT: 136

TABULATIONS

2 Br/1Ba	84
3 Br/2 Ba	52
Total Units	136
Total Parking	174 1.28/unit

WEST COLLEGE AVE. SANTA ROSA

McKellarMcGowan

