

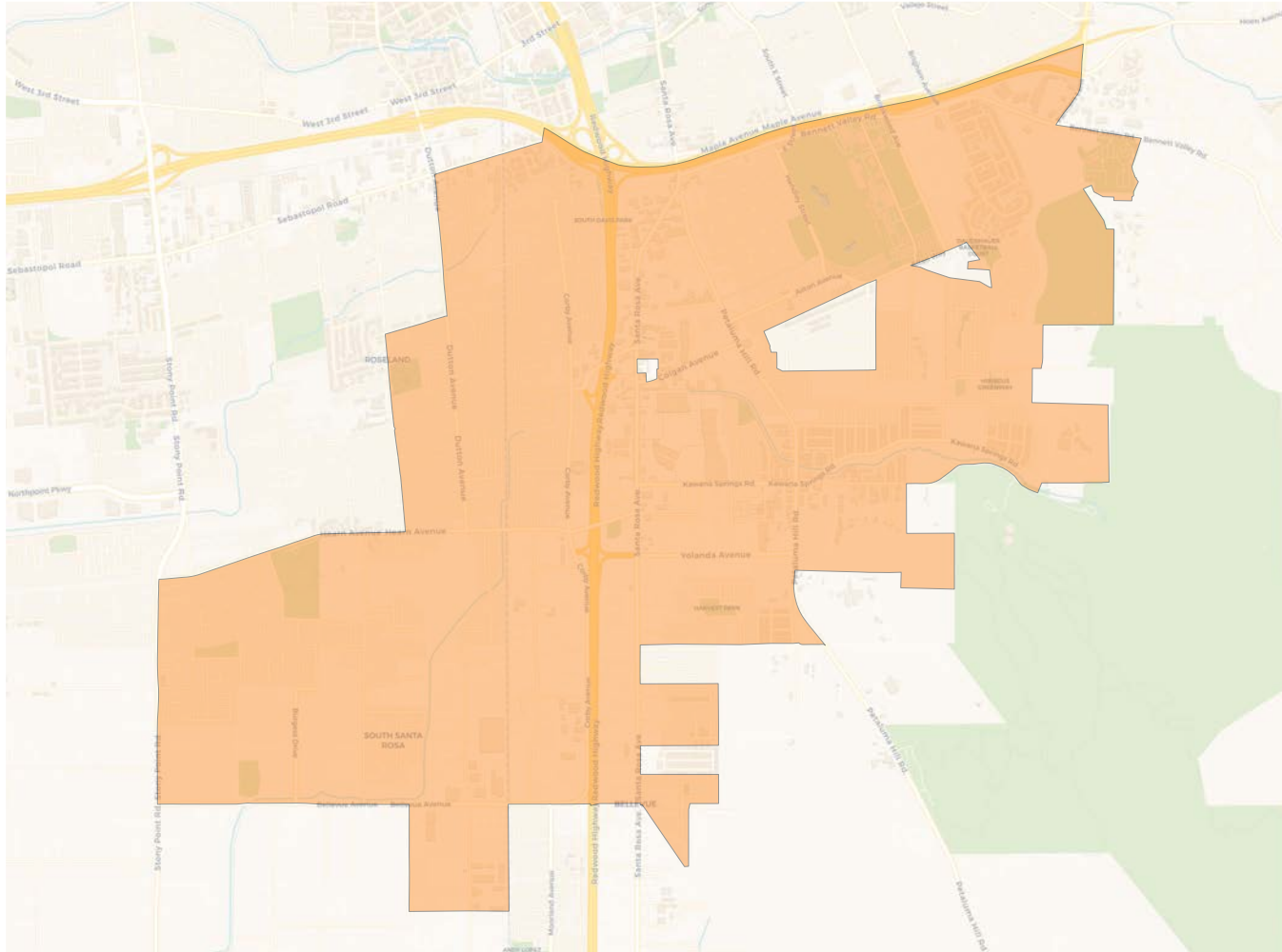
2020 Census

	1	2	3	4	5	6	7
Population	25,533	25,392	25,012	25,975	25,726	25,500	25,377
Deviation	31	-110	-490	473	224	-2	-125
Deviation %	0.1%	-0.4%	-1.9%	1.9%	0.9%	-0.0%	-0.5%
Other	8,301	19,450	19,313	19,188	11,695	13,526	11,287
Other %	32.5%	76.6%	77.2%	73.9%	45.5%	53.0%	44.5%
Latino	14,463	4,558	3,913	5,079	11,928	9,630	11,670
Latino %	56.6%	18.0%	15.6%	19.6%	46.4%	37.8%	46.0%
Asian	2,116	988	1,456	1,219	1,392	1,783	1,710
Asian %	8.3%	3.9%	5.8%	4.7%	5.4%	7.0%	6.7%
Black	653	396	330	489	711	561	710
Black %	2.6%	1.6%	1.3%	1.9%	2.8%	2.2%	2.8%

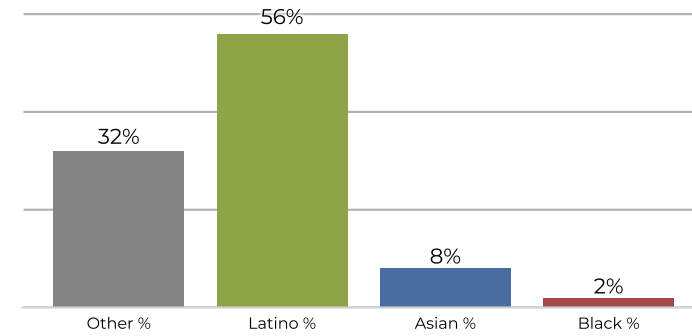
Citizen Voting Age Population (CVAP)

	1	2	3	4	5	6	7
Total CVAP	14,580	19,324	18,958	21,018	15,889	17,081	15,074
Other CVAP	7,625	16,456	16,378	17,356	11,008	11,856	9,203
Other CVAP %	52.3%	85.2%	86.4%	82.6%	69.3%	69.4%	61.1%
Latino CVAP	4,947	1,759	1,677	2,319	3,867	4,055	4,353
Latino CVAP %	33.9%	9.1%	8.8%	11.0%	24.3%	23.7%	28.9%
Asian CVAP	1,316	745	789	830	771	700	1,135
Asian CVAP %	9.0%	3.9%	4.2%	3.9%	4.9%	4.1%	7.5%
Black CVAP	692	364	114	513	243	470	383
Black CVAP %	4.7%	1.9%	0.6%	2.4%	1.5%	2.8%	2.5%

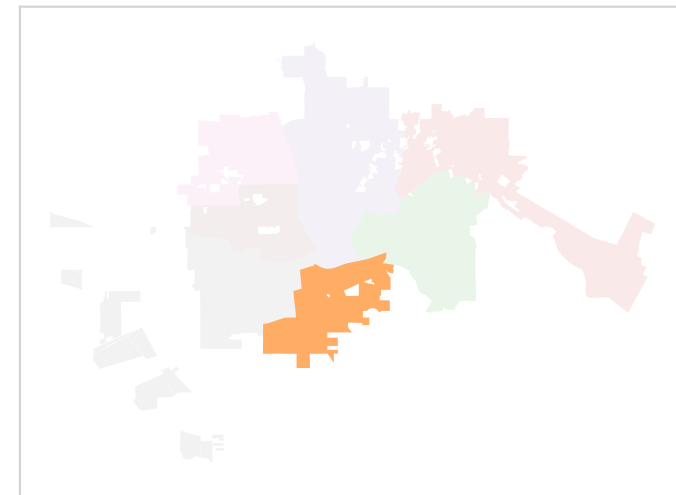
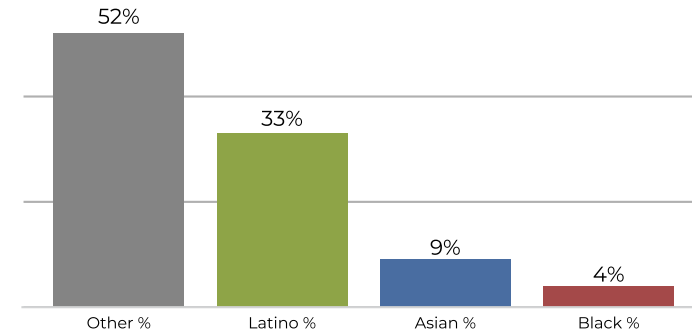
District 1



2020 Census

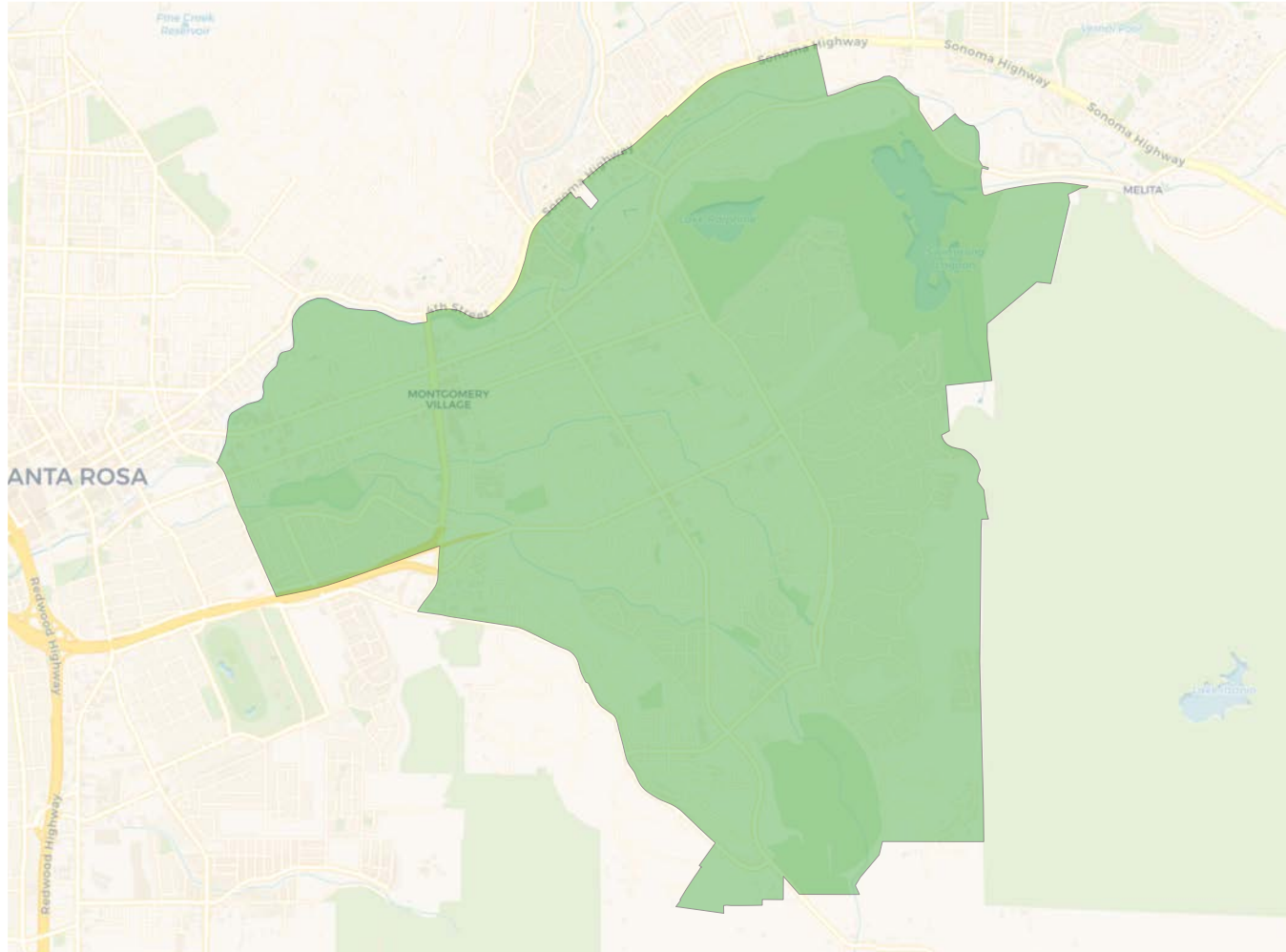


Citizen Voting Age Population

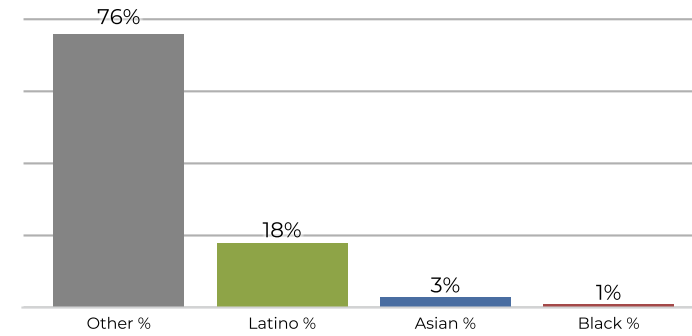


Population	Deviation	Deviation %	Other	Other %	Latino	Latino %	Asian	Asian %	Black	Black %
25,533	31	0.1%	8,301	32.5%	14,463	56.6%	2,116	8.3%	653	2.6%
Total CVAP	Other CVAP	Other CVAP %	Latino CVAP	Latino CVAP %	Asian CVAP	Asian CVAP %	Black CVAP	Black CVAP %		
14,580	7,625	52.3%	4,947	33.9%	1,316	9.0%	692	4.7%		

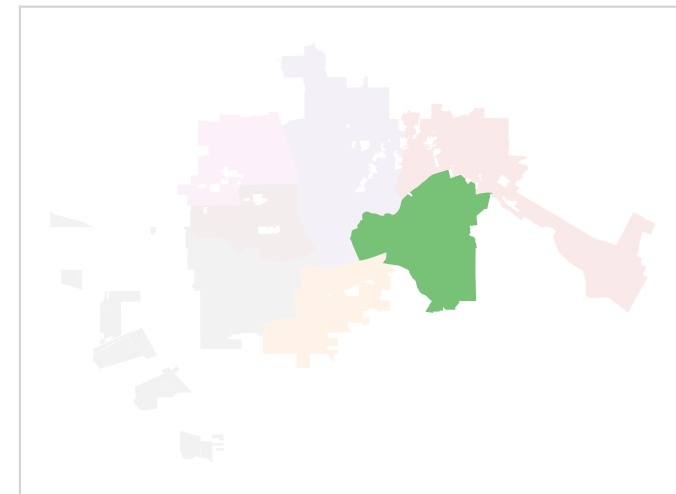
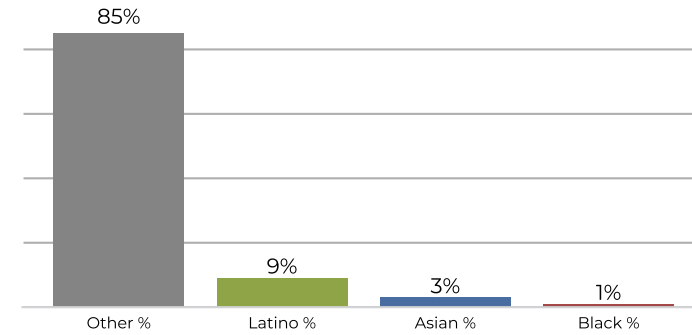
District 2



2020 Census

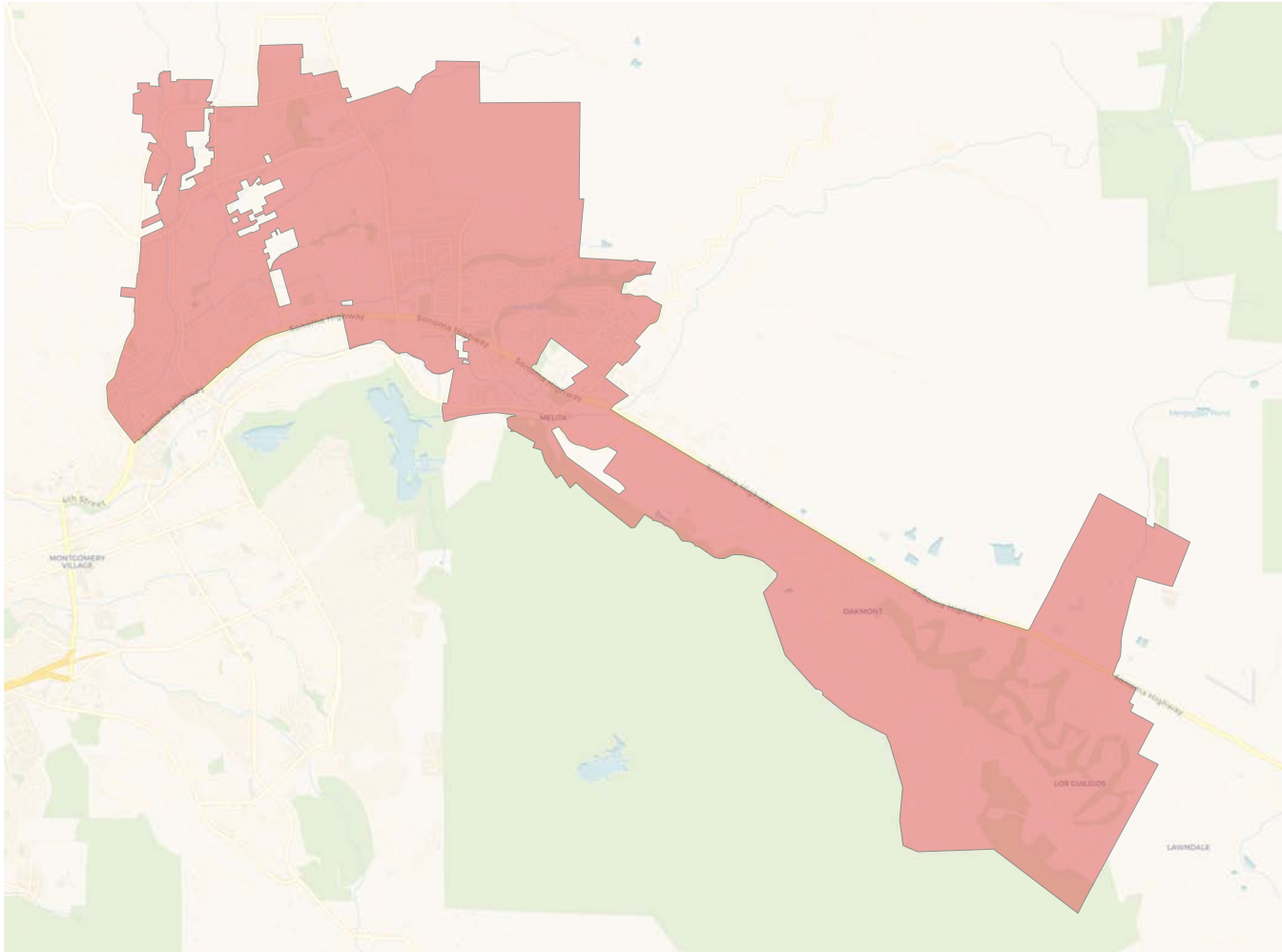


Citizen Voting Age Population

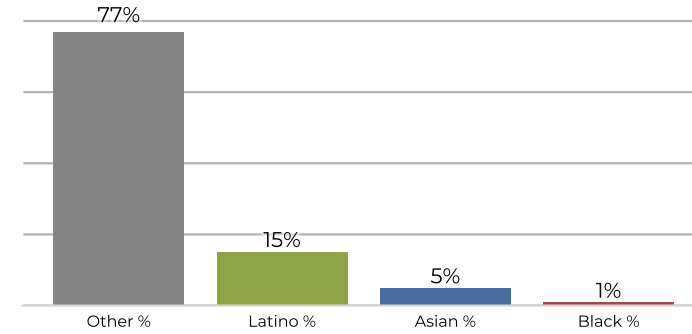


Population	Deviation	Deviation %	Other	Other %	Latino	Latino %	Asian	Asian %	Black	Black %
25,392	-110	-0.4%	19,450	76.6%	4,558	18.0%	988	3.9%	396	1.6%
Total CVAP	Other CVAP	Other CVAP %	Latino CVAP	Latino CVAP %	Asian CVAP	Asian CVAP %	Black CVAP	Black CVAP %		
19,324	16,456	85.2%	1,759	9.1%	745	3.9%	364	1.9%		

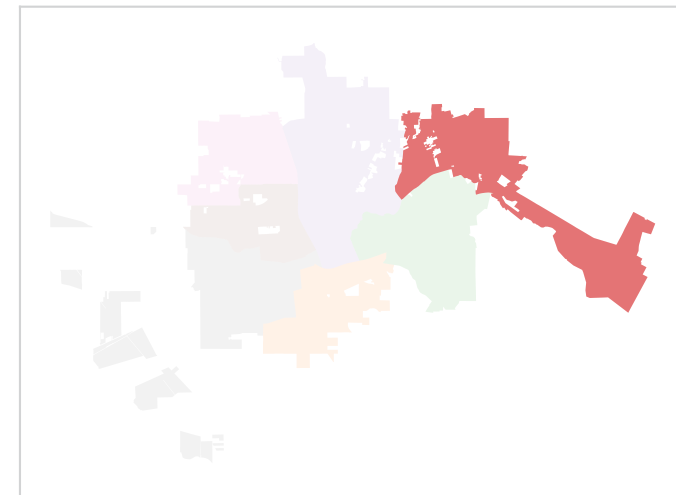
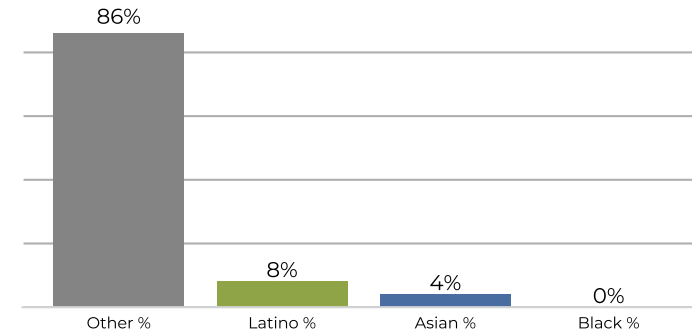
District 3



2020 Census

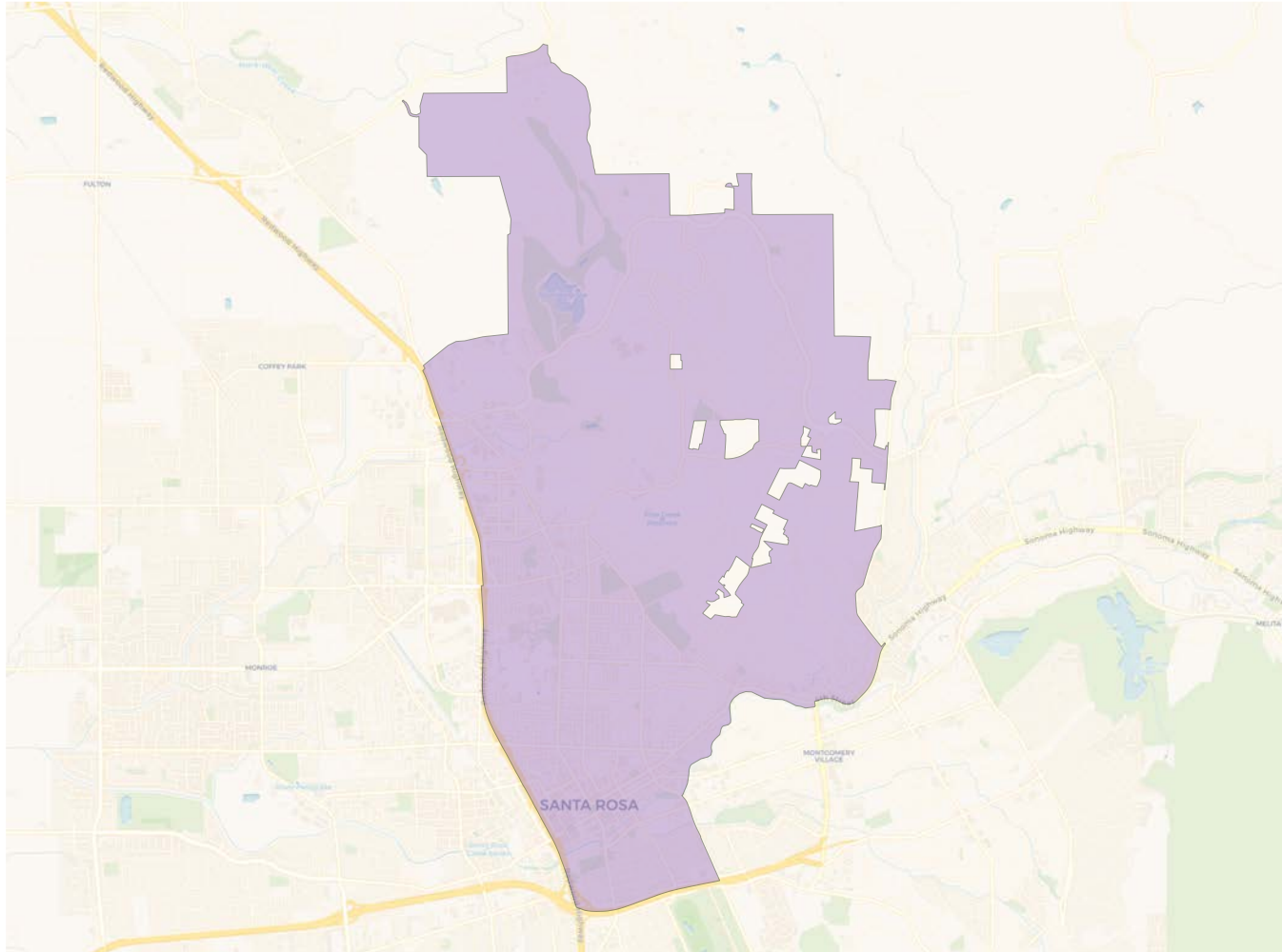


Citizen Voting Age Population

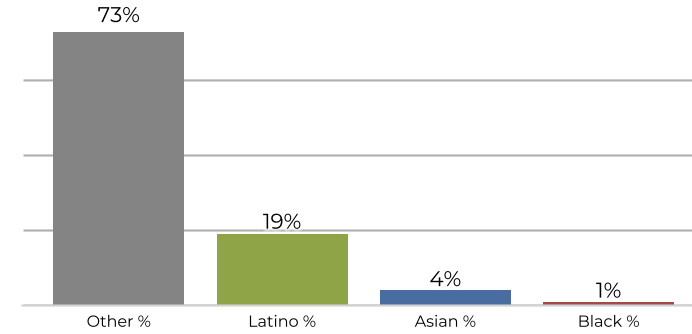


Population	Deviation	Deviation %	Other	Other %	Latino	Latino %	Asian	Asian %	Black	Black %
25,012	-490	-1.9%	19,313	77.2%	3,913	15.6%	1,456	5.8%	330	1.3%
Total CVAP	Other CVAP	Other CVAP %	Latino CVAP	Latino CVAP %	Asian CVAP	Asian CVAP %	Black CVAP	Black CVAP %		
18,958	16,378	86.4%	1,677	8.8%	789	4.2%	114	0.6%		

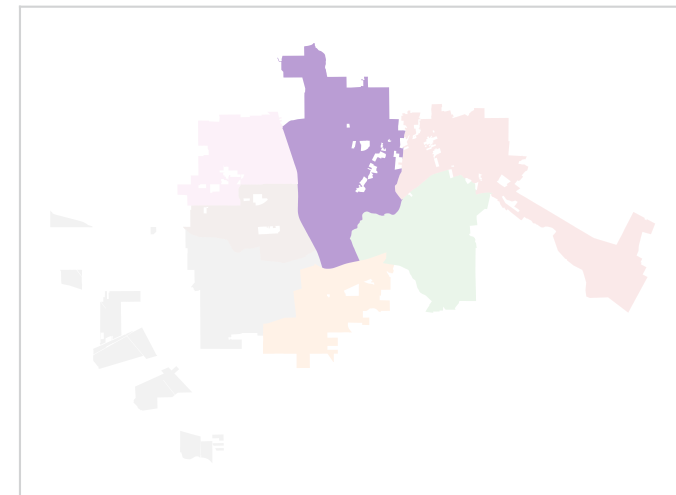
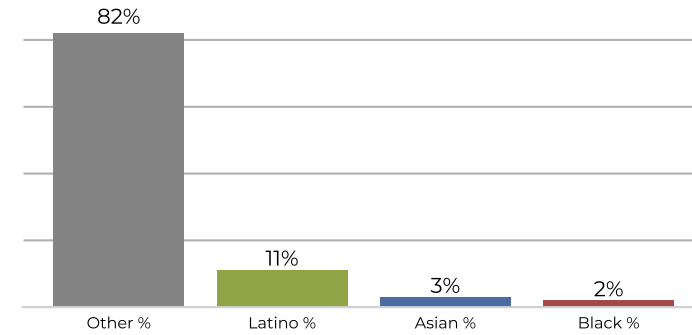
District 4



2020 Census

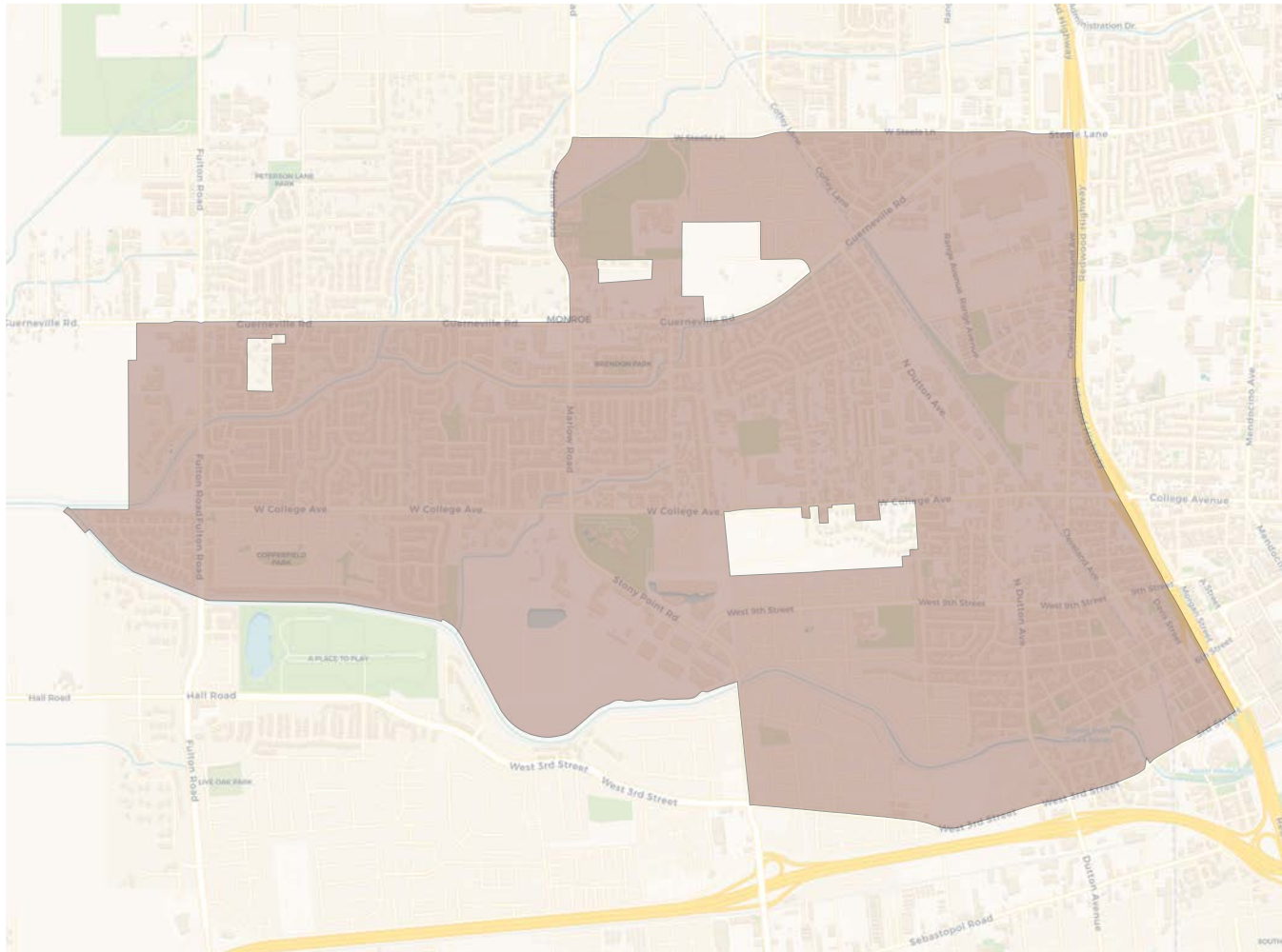


Citizen Voting Age Population

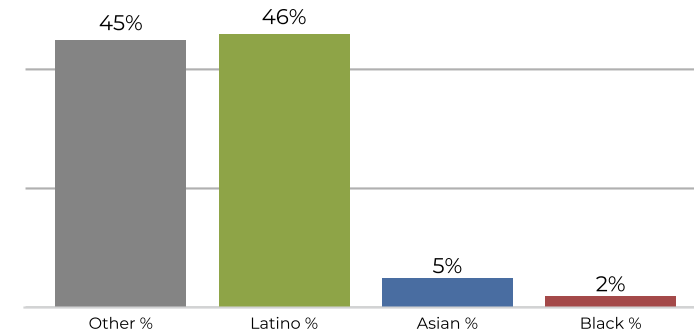


Population	Deviation	Deviation %	Other	Other %	Latino	Latino %	Asian	Asian %	Black	Black %
25,975	473	1.9%	19,188	73.9%	5,079	19.6%	1,219	4.7%	489	1.9%
Total CVAP	Other CVAP	Other CVAP %	Latino CVAP	Latino CVAP %	Asian CVAP	Asian CVAP %	Black CVAP	Black CVAP %		
21,018	17,356	82.6%	2,319	11.0%	830	3.9%	513	2.4%		

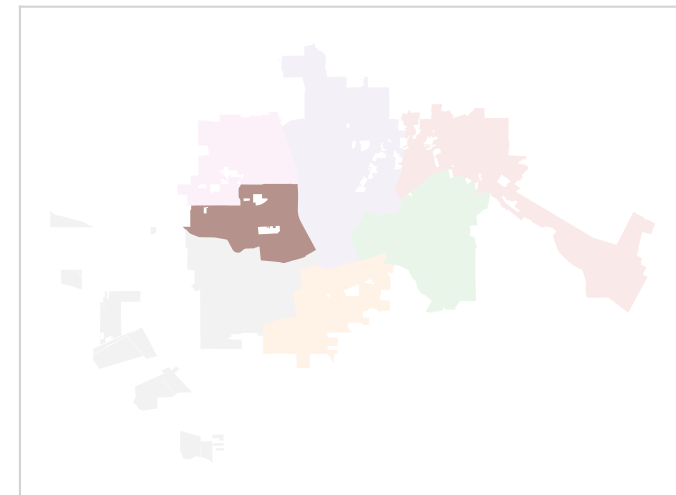
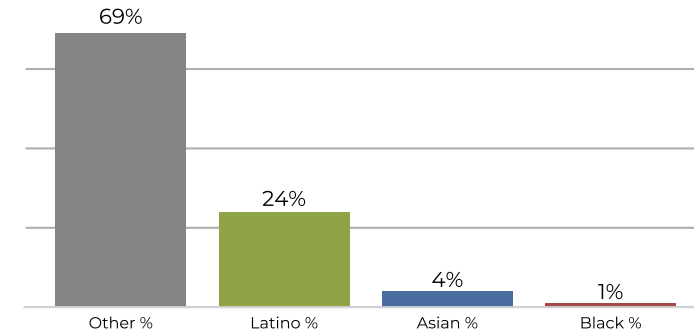
District 5



2020 Census

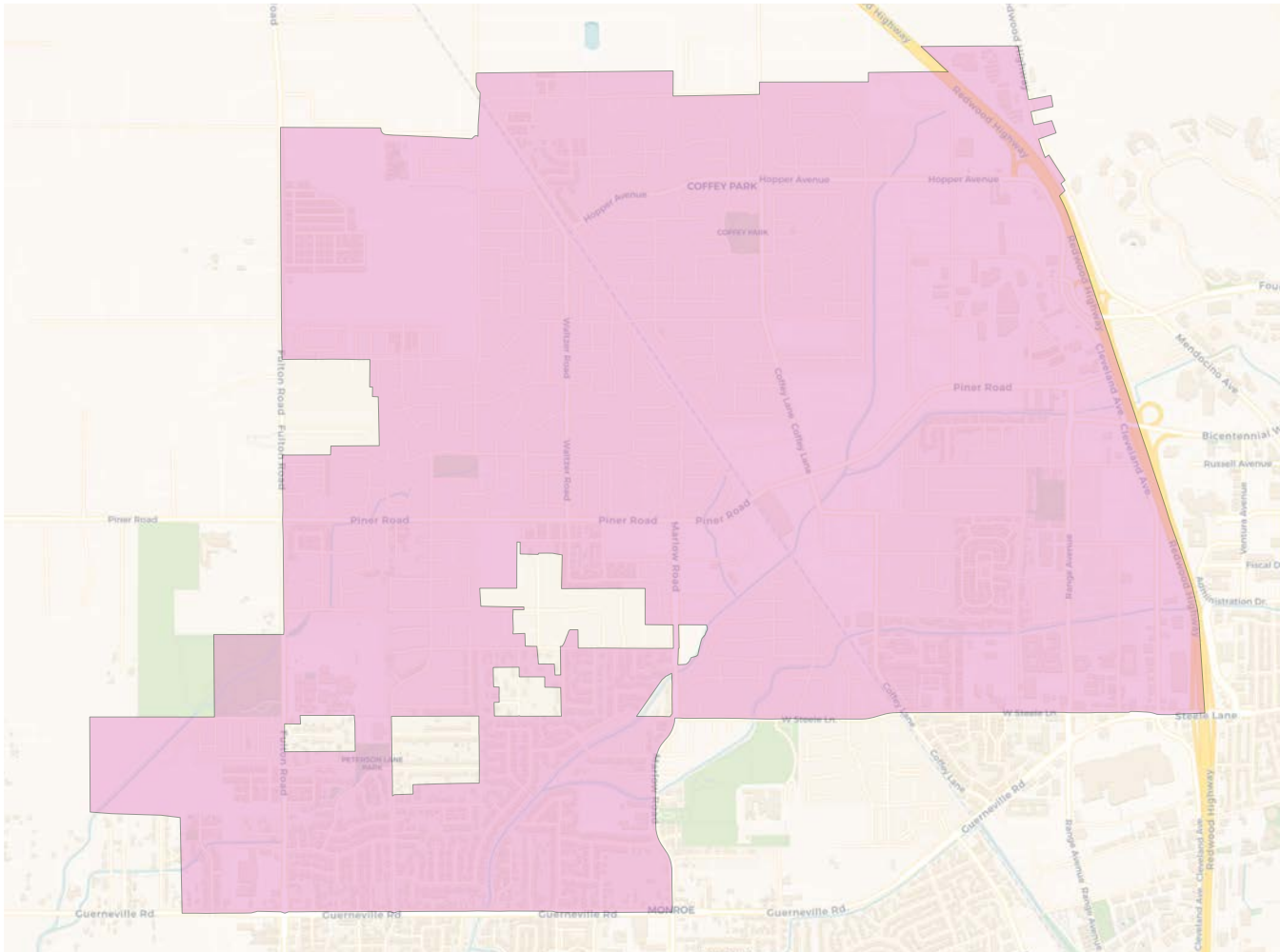


Citizen Voting Age Population

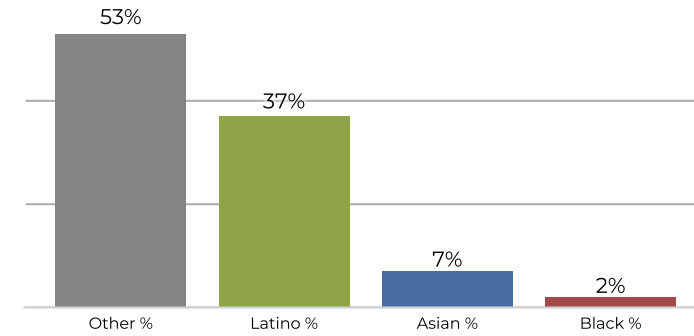


Population	Deviation	Deviation %	Other	Other %	Latino	Latino %	Asian	Asian %	Black	Black %
25,726	224	0.9%	11,695	45.5%	11,928	46.4%	1,392	5.4%	711	2.8%
Total CVAP	Other CVAP	Other CVAP %	Latino CVAP	Latino CVAP %	Asian CVAP	Asian CVAP %	Black CVAP	Black CVAP %		
15,889	11,008	69.3%	3,867	24.3%	771	4.9%	243	1.5%		

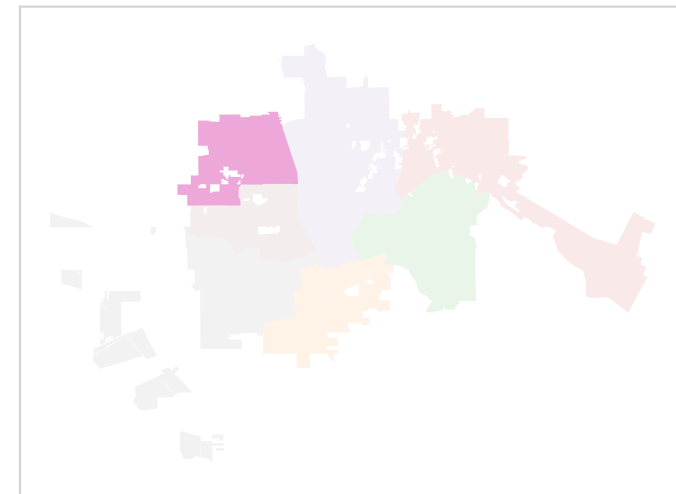
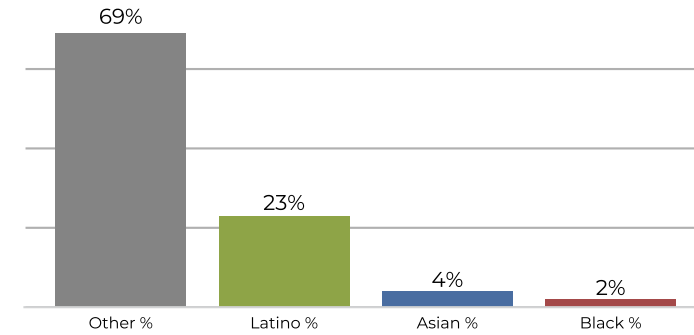
District 6



2020 Census

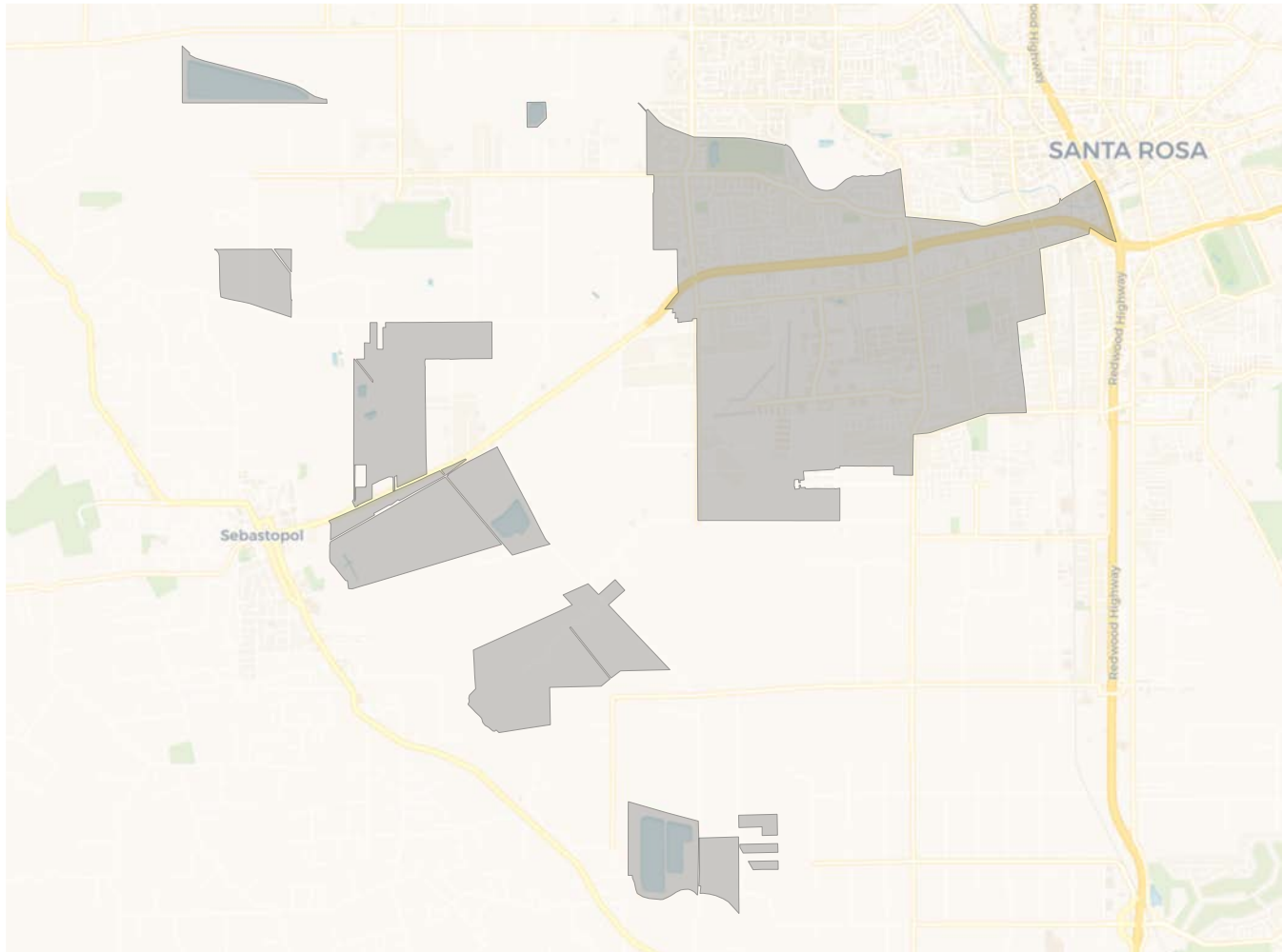


Citizen Voting Age Population

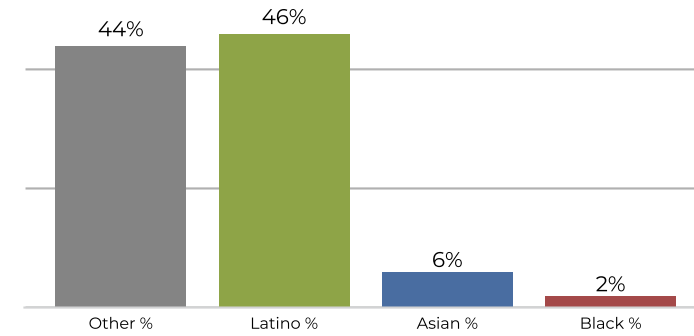


Population	Deviation	Deviation %	Other	Other %	Latino	Latino %	Asian	Asian %	Black	Black %
25,500	-2	-0.0%	13,526	53.0%	9,630	37.8%	1,783	7.0%	561	2.2%
Total CVAP	Other CVAP	Other CVAP %	Latino CVAP	Latino CVAP %	Asian CVAP	Asian CVAP %	Black CVAP	Black CVAP %		
17,081	11,856	69.4%	4,055	23.7%	700	4.1%	470	2.8%		

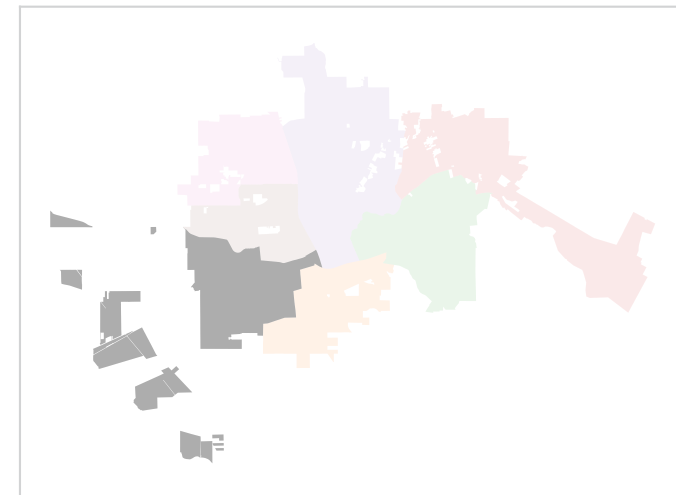
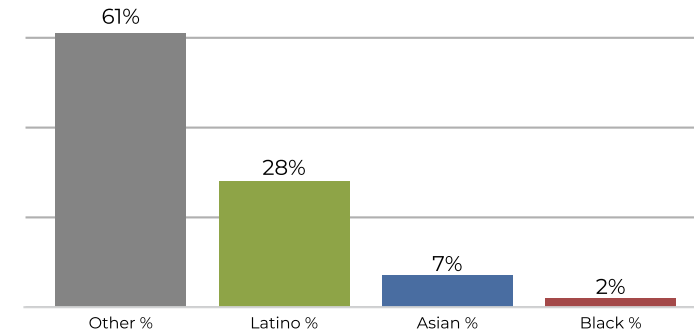
District 7



2020 Census



Citizen Voting Age Population



Population	Deviation	Deviation %	Other	Other %	Latino	Latino %	Asian	Asian %	Black	Black %
25,377	-125	-0.5%	11,287	44.5%	11,670	46.0%	1,710	6.7%	710	2.8%
Total CVAP	Other CVAP	Other CVAP %	Latino CVAP	Latino CVAP %	Asian CVAP	Asian CVAP %	Black CVAP	Black CVAP %		
15,074	9,203	61.1%	4,353	28.9%	1,135	7.5%	383	2.5%		