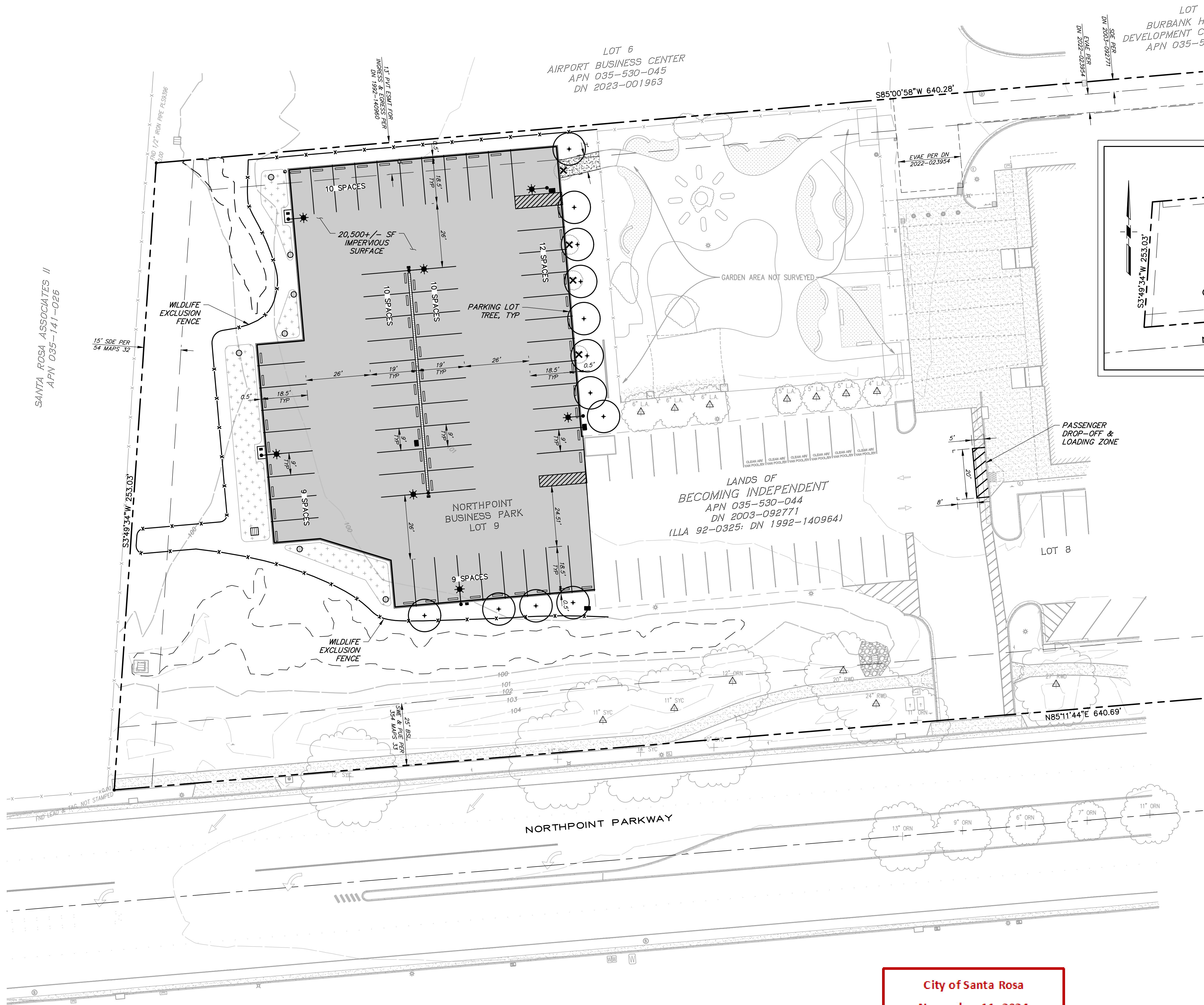


11/17/2024 10:53 AM: M. J. Macias, Designer, C:\2023\1455 Corporate Center PKWY\1455 Corporate Center PKWY.dwg
[Drawn files: X:\2023\1455 Corporate Center PKWY\1455 Corporate Center PKWY.dwg, X:\2023\1455 Corporate Center PKWY\1455 Corporate Center PKWY.dwg]

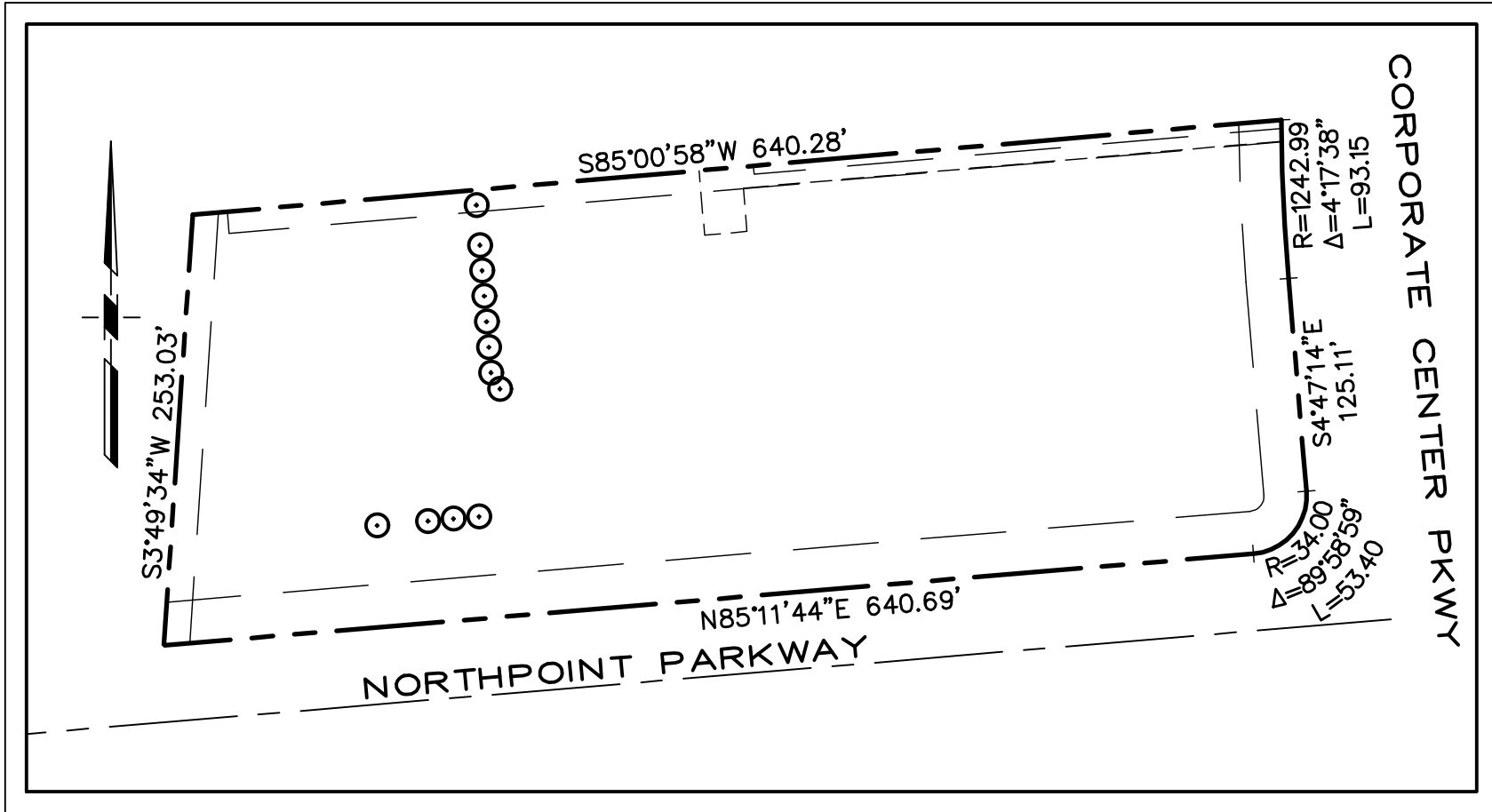


SANTA ROSA ASSOCIATES II
APN 035-141-026

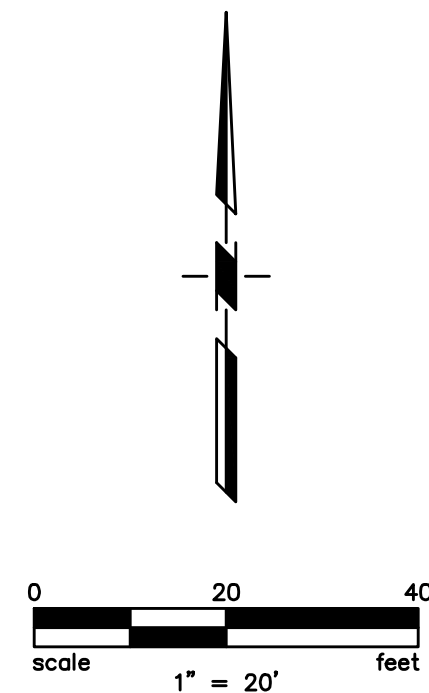
LOT 6
AIRPORT BUSINESS CENTER
APN 035-530-045
DN 2023-001963

LOT 7
BURBANK HOUSING
DEVELOPMENT CORPORATION
APN 035-530-043

LANDS OF
BECOMING INDEPENDENT
APN 035-530-044
DN 2003-092771
(LLA 92-0325; DN 1992-140964)



LOCATION MAP
NO SCALE



City of Santa Rosa
November 11, 2024
Planning & Economic
Development Department

1455 CORPORATE CENTER PKWY LOCATED IN SANTA ROSA, CALIFORNIA			
SITE LAYOUT PLAN			
Designed by: JB		APPR	
Drawn by: XX		DESCRIPTION	
Checked by: XX		NO. DATE	
Date: NOVEMBER 2024		REVISIONS	
Job No. 2023003.00			
SHEET No. 4 OF 14			
Copyright © Carlile & Macy			

CARLILE & MACY

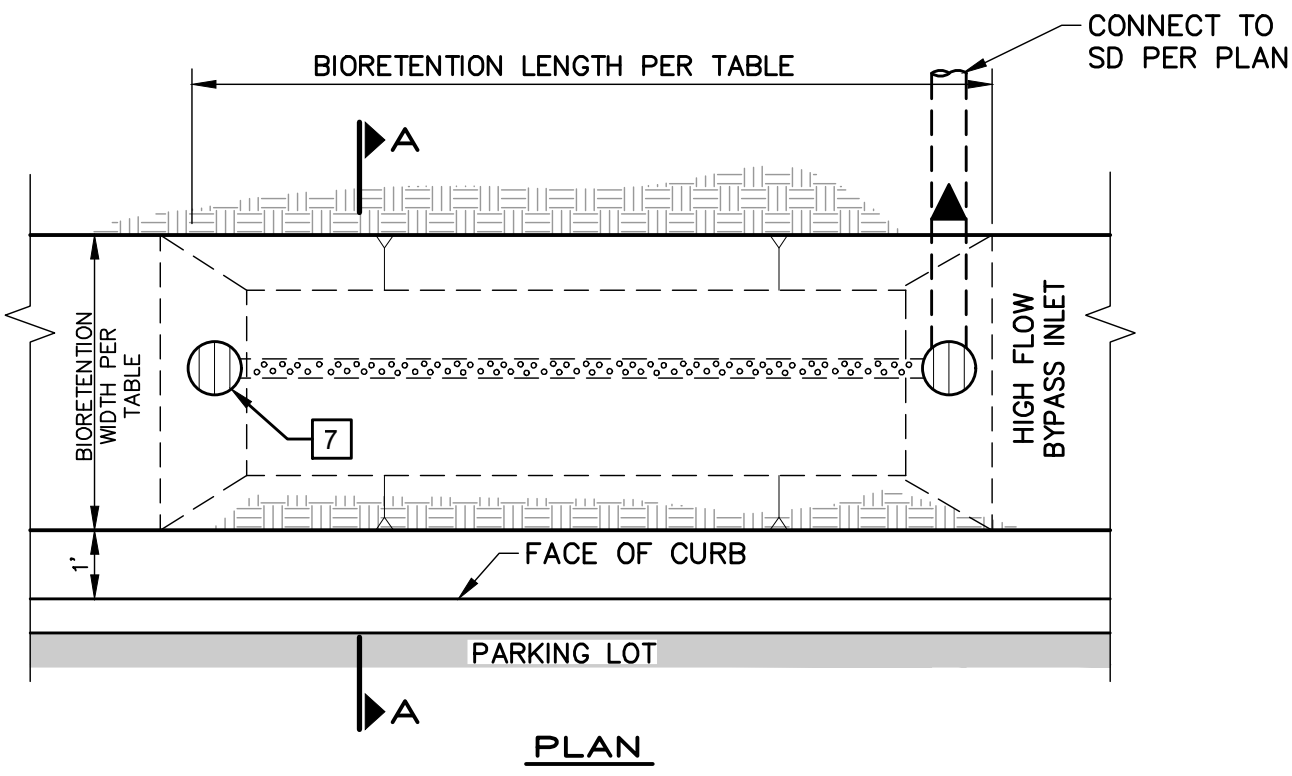
CIVIL ENGINEERS • URBAN PLANNERS
LAND SURVEYORS • LANDSCAPE ARCHITECTS

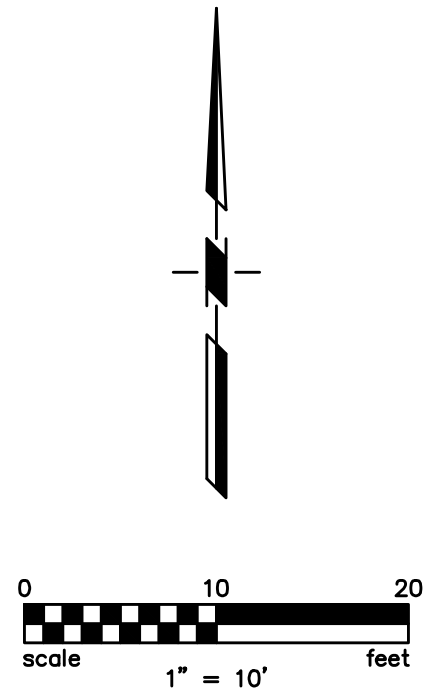
15 THIRD STREET, SANTA ROSA, CA 95401
TEL (707) 542-6451 FAX (707) 542-5212

PROFESSIONAL ENGINEER
M. J. MACIAS
No. 43973
LICENSED IN THE STATE OF CALIFORNIA

NOTES:

- EXFILTRATION TRENCH: 4" PERFORATED PVC DRAIN PIPE, INV PER PLAN, WRAPPED IN FILTER FABRIC, PLACED IN A 12" WIDE TRENCH FULL OF ¾" CLEAN DRAIN ROCK. TRENCH TO BE LINED WITH DRAIN ROCK.
- INVERT PER PLAN = TOP VOLUME CAPTURE.
- BIOINFILTRATION SOIL MIX: "SOILLAND BIOSWALE MIX" BY SOILS PLUS (707) 996-3400
- TOP OF PERFORATED PIPE TO BE SET AT 6" MIN BELOW BOTTOM OF ROAD STRUCTURAL SECTION.
- BOTTOM OPEN TO ALLOW INFILTRATION INTO NATIVE SOIL.
- ALL PLANTING SHALL BE PER CITY OF SANTA ROSA LOW IMPACT DEVELOPMENT TECHNICAL DESIGN MANUAL, APPENDIX F. SEE LANDSCAPE PLANS
- RIM OF AREA DRAIN TO BE SET 3" ABOVE FG.



[illegible]

A circular professional engineer seal for Mark R. Hale. The outer ring contains the text "PROFESSIONAL ENGINEER" at the top and "STATE OF CALIFORNIA" at the bottom, separated by two stars. The inner circle contains the name "MARK R. HALE" in large letters, with "No. 43973" below it, and "CIVIL" on the right side.

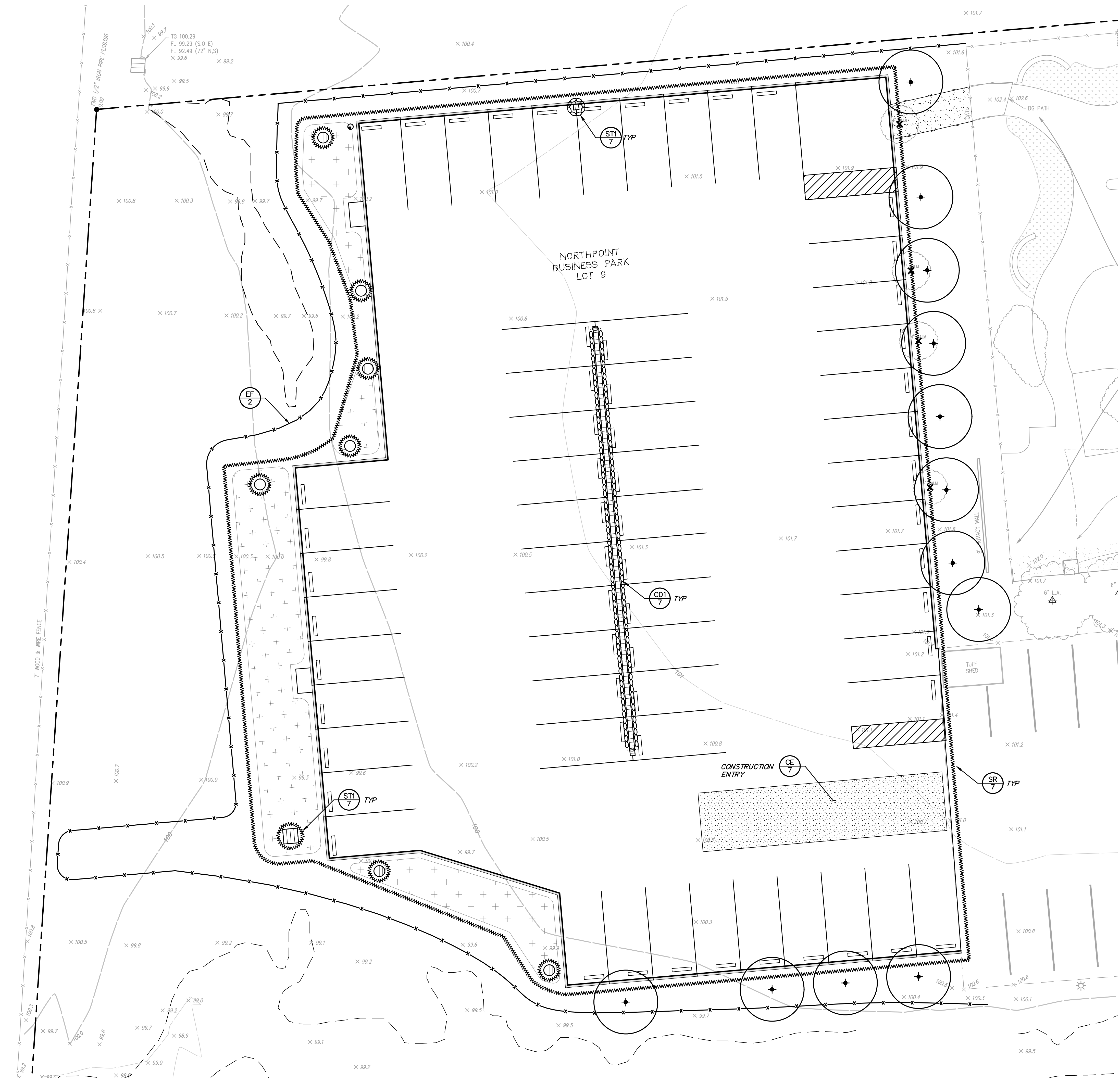
Designed by:	JB
Drawn by:	XX
Checked by:	XX
Date: NOVEMBER 2024	
Job No. 2023003.00	
SHEET No. 6 OF 14	
Copyright © Carille • Macy	

EROSION CONTROL LEGEND

- (CE) CONSTRUCTION ENTRY
(CD) SAND BAG CHECK DAM
HYDROSEED AREA
(SR) STRAW ROLL
(ST) TEMP. SILT TRAP AT DI
(EF) WILDLIFE EXCLUSION FENCE

EROSION CONTROL NOTES

- EROSION AND SEDIMENT CONTROL SHOWN ON THIS SHEET ASSUMES STREET, CURB, GUTTER AND STORM DRAINS ARE COMPLETED PRIOR TO RAINS. PROJECT ENGINEER SHALL PREPARE INTERIM DRAINAGE AND EROSION AND SEDIMENT CONTROL PLAN BASED ON WINTER CONDITIONS FOR CITY APPROVAL PRIOR TO CONTRACTOR INSTALLATION. A CURRENT EROSION AND SEDIMENT CONTROL PLAN SHALL BE MAINTAINED AND KEPT ON THE JOB SITE.
- EROSION AND SEDIMENT CONTROL MEASURES SHALL BE USED TO ENSURE THAT WATER ENTERING THE STORM DRAIN SYSTEM FROM THE CONSTRUCTION SITE IS OF EQUIVALENT QUALITY AND CHARACTER AS THE WATER ABOVE THE SITE.
- EROSION AND SEDIMENT CONTROL MEASURES SHALL BE PLACED IN FRONT OF INCOMPLETE STORM DRAIN SYSTEMS TO PREVENT DEBRIS AND SEDIMENT-LADEN WATER FROM ENTERING INTO THE PUBLIC STORM DRAIN SYSTEM. BEST MANAGEMENT PRACTICES SHALL BE USED WHEN DESIGNING AND INSTALLING SUCH DEVICES.
- THE CONTRACTOR SHALL BE RESPONSIBLE FOR CONSTANT MAINTENANCE OF EROSION AND SEDIMENT CONTROL MEASURES AT ALL TIMES TO THE SATISFACTION OF THE ENGINEER AND CITY OF SANTA ROSA AND IN ACCORDANCE WITH THE PROJECT SWPPP (IF APPLICABLE). EROSION AND SEDIMENT CONTROL MEASURES AND THEIR INSTALLATION SHALL BE ACCOMPLISHED USING BEST MANAGEMENT PRACTICES.
- IF THE STORM DRAIN SYSTEM IS NOT IN PLACE BY OCTOBER 15, ADDITIONAL MEASURES SHALL BE TAKEN SUCH AS TEMPORARY SETTLING BASINS WHICH MEET THE SATISFACTION OF THE ENGINEER AND THE CITY OF SANTA ROSA SILT AND/OR CATCH BASINS MUST BE CLEANED OUT ON A REGULAR BASIS AFTER STORMS TO MAINTAIN DESIGN CAPACITY.
- STORM WATER RUNOFF FROM THE CONSTRUCTION SITE SHALL BE DIRECTED TOWARD AN INLET WITH A SEDIMENT OR FILTRATION INTERCEPTOR PRIOR TO ENTERING THE STORM DRAIN SYSTEM.
- THE CONTRACTOR WILL BE RESPONSIBLE FOR CLEANING WATER THAT HAS BECOME POLLUTED DUE TO NOT TAKING NECESSARY EROSION AND SEDIMENT CONTROL ACTIONS.
- THE CONTRACTOR SHALL BE RESPONSIBLE FOR CLEANUP OF MUD AND DEBRIS CARRIED ONTO SURROUNDING STREETS AND ROADS AS A RESULT OF CONSTRUCTION ACTIVITY ON THE SITE TO THE SATISFACTION OF THE CITY OF SANTA ROSA.
- ANY DENUDED OR DISTURBED SOILS SHALL BE PROTECTED USING BEST MANAGEMENT PRACTICES.
- PRIOR TO AND DURING A PRECIPITATION EVENT, ALL PAVED AREAS WILL BE KEPT CLEAR OF EARTH MATERIAL AND DEBRIS. THE SITE SHALL BE MAINTAINED BY THE DEVELOPER, CONTRACTOR OR OWNER SO THAT A MINIMUM OF SEDIMENT-LADEN RUNOFF LEAVES THE SITE.
- THE CONTRACTOR SHALL INFORM ALL CONSTRUCTION SITE WORKERS ABOUT THE MAJOR PROVISIONS OF THE EROSION AND SEDIMENT CONTROL PLAN AND SEEK THEIR COOPERATION IN AVOIDING THE DISTURBANCE OF THESE CONTROL MEASURES.
- BEST MANAGEMENT PRACTICES SHALL BE VISUALLY MONITORED ON A WEEKLY BASIS DURING THE DRY SEASON AND RECORDED IN AN INSPECTION CHECKLIST. RAIN EVENT VISUAL MONITORING SHALL BE PERFORMED WITHIN 48 HOURS PRIOR TO AN ANTICIPATED RAIN EVENT, DAILY DURING A RAIN EVENT AND WITH 48 HOURS FOLLOWING A RAIN EVENT. REMOVE SEDIMENT WHEN ACCUMULATIONS REACH 1/3 THE HEIGHT OF THE BARRIER AND REPLACE FILTER DEVICES AS NECESSARY TO ENSURE PROPER FUNCTION.
- UNSTABILIZED AREAS WILL BE REPAIRED AS SOON AS POSSIBLE AFTER BEING DAMAGED.
- ALL GRADED OR DISTURBED AREAS SHALL BE STABILIZED IMMEDIATELY AFTER GRADING IS COMPLETE.
- ENTRANCE TO THE PROJECT SHALL BE MAINTAINED IN A CONDITION THAT WILL PREVENT TRACKING OR FLOWING OF SEDIMENT INTO PUBLIC RIGHT- OF-WAY. WHEN NECESSARY, WHEELS SHALL BE CLEANED TO REMOVE SEDIMENT PRIOR TO ENTRANCE OF PUBLIC RIGHTS-OF-WAY. WHEN WASHING IS REQUIRED IT SHALL BE DONE IN AN AREA STABILIZED WITH CRUSHED ROCK THAT DRAINS INTO A SEDIMENT TRAP.
- ALL SEDIMENT SPILLED, DROPPED, OR TRACKED ONTO PUBLIC RIGHTS-OF- WAY SHALL BE REMOVED IMMEDIATELY USING BEST MANAGEMENT PRACTICES.
- ALL EROSION AND SEDIMENT CONTROL MEASURES SHALL BE REMOVED WHEN THEY HAVE SERVED THEIR PURPOSE SO AS NOT TO BLOCK OR IMPEDE STORM FLOW OR DRAINAGE.
- ALL EROSION AND SEDIMENT CONTROL MEASURES SHALL BE REPAIRED OR REPLACED WHEN THEY ARE NO LONGER FUNCTIONING PER BEST MANAGEMENT PRACTICES.
- THE CONTRACTOR SHALL HAVE EROSION AND SEDIMENT CONTROL MEASURES ON SITE ADEQUATE TO PROTECT THE ENTIRE SITE PRIOR TO THE OCTOBER 15 DATE SUCH THAT IT IS IMMEDIATELY AVAILABLE IN PREPARATION OF THE UPCOMING WINTER SEASON OR IN THE EVENT OF AN EARLY RAIN.
- AFTER CONSTRUCTION IS COMPLETE ALL STORM DRAIN SYSTEMS ASSOCIATED WITH THIS PROJECT SHALL BE INSPECTED AND CLEARED OF ACCUMULATED SEDIMENTS AND DEBRIS.



11/17/2024 10:54:15 AM Austin, Betsy C:\2023\2023003\Drawings\11\23003-EC.dwg
Draw files: X-23003-1B, X-23003-1C, X-23003-1D, X-23003-1E, X-23003-1F, X-23003-1G, X-23003-1H, X-23003-1I, X-23003-1J, X-23003-1K, X-23003-1L, X-23003-1M, X-23003-1N, X-23003-1O, X-23003-1P, X-23003-1Q, X-23003-1R, X-23003-1S, X-23003-1T, X-23003-1U, X-23003-1V, X-23003-1W, X-23003-1X, X-23003-1Y, X-23003-1Z, X-23003-2A, X-23003-2B, X-23003-2C, X-23003-2D, X-23003-2E, X-23003-2F, X-23003-2G, X-23003-2H, X-23003-2I, X-23003-2J, X-23003-2K, X-23003-2L, X-23003-2M, X-23003-2N, X-23003-2O, X-23003-2P, X-23003-2Q, X-23003-2R, X-23003-2S, X-23003-2T, X-23003-2U, X-23003-2V, X-23003-2W, X-23003-2X, X-23003-2Y, X-23003-2Z, X-23003-3A, X-23003-3B, X-23003-3C, X-23003-3D, X-23003-3E, X-23003-3F, X-23003-3G, X-23003-3H, X-23003-3I, X-23003-3J, X-23003-3K, X-23003-3L, X-23003-3M, X-23003-3N, X-23003-3O, X-23003-3P, X-23003-3Q, X-23003-3R, X-23003-3S, X-23003-3T, X-23003-3U, X-23003-3V, X-23003-3W, X-23003-3X, X-23003-3Y, X-23003-3Z, X-23003-4A, X-23003-4B, X-23003-4C, X-23003-4D, X-23003-4E, X-23003-4F, X-23003-4G, X-23003-4H, X-23003-4I, X-23003-4J, X-23003-4K, X-23003-4L, X-23003-4M, X-23003-4N, X-23003-4O, X-23003-4P, X-23003-4Q, X-23003-4R, X-23003-4S, X-23003-4T, X-23003-4U, X-23003-4V, X-23003-4W, X-23003-4X, X-23003-4Y, X-23003-4Z, X-23003-5A, X-23003-5B, X-23003-5C, X-23003-5D, X-23003-5E, X-23003-5F, X-23003-5G, X-23003-5H, X-23003-5I, X-23003-5J, X-23003-5K, X-23003-5L, X-23003-5M, X-23003-5N, X-23003-5O, X-23003-5P, X-23003-5Q, X-23003-5R, X-23003-5S, X-23003-5T, X-23003-5U, X-23003-5V, X-23003-5W, X-23003-5X, X-23003-5Y, X-23003-5Z, X-23003-6A, X-23003-6B, X-23003-6C, X-23003-6D, X-23003-6E, X-23003-6F, X-23003-6G, X-23003-6H, X-23003-6I, X-23003-6J, X-23003-6K, X-23003-6L, X-23003-6M, X-23003-6N, X-23003-6O, X-23003-6P, X-23003-6Q, X-23003-6R, X-23003-6S, X-23003-6T, X-23003-6U, X-23003-6V, X-23003-6W, X-23003-6X, X-23003-6Y, X-23003-6Z, X-23003-7A, X-23003-7B, X-23003-7C, X-23003-7D, X-23003-7E, X-23003-7F, X-23003-7G, X-23003-7H, X-23003-7I, X-23003-7J, X-23003-7K, X-23003-7L, X-23003-7M, X-23003-7N, X-23003-7O, X-23003-7P, X-23003-7Q, X-23003-7R, X-23003-7S, X-23003-7T, X-23003-7U, X-23003-7V, X-23003-7W, X-23003-7X, X-23003-7Y, X-23003-7Z, X-23003-8A, X-23003-8B, X-23003-8C, X-23003-8D, X-23003-8E, X-23003-8F, X-23003-8G, X-23003-8H, X-23003-8I, X-23003-8J, X-23003-8K, X-23003-8L, X-23003-8M, X-23003-8N, X-23003-8O, X-23003-8P, X-23003-8Q, X-23003-8R, X-23003-8S, X-23003-8T, X-23003-8U, X-23003-8V, X-23003-8W, X-23003-8X, X-23003-8Y, X-23003-8Z, X-23003-9A, X-23003-9B, X-23003-9C, X-23003-9D, X-23003-9E, X-23003-9F, X-23003-9G, X-23003-9H, X-23003-9I, X-23003-9J, X-23003-9K, X-23003-9L, X-23003-9M, X-23003-9N, X-23003-9O, X-23003-9P, X-23003-9Q, X-23003-9R, X-23003-9S, X-23003-9T, X-23003-9U, X-23003-9V, X-23003-9W, X-23003-9X, X-23003-9Y, X-23003-9Z, X-23003-10A, X-23003-10B, X-23003-10C, X-23003-10D, X-23003-10E, X-23003-10F, X-23003-10G, X-23003-10H, X-23003-10I, X-23003-10J, X-23003-10K, X-23003-10L, X-23003-10M, X-23003-10N, X-23003-10O, X-23003-10P, X-23003-10Q, X-23003-10R, X-23003-10S, X-23003-10T, X-23003-10U, X-23003-10V, X-23003-10W, X-23003-10X, X-23003-10Y, X-23003-10Z, X-23003-11A, X-23003-11B, X-23003-11C, X-23003-11D, X-23003-11E, X-23003-11F, X-23003-11G, X-23003-11H, X-23003-11I, X-23003-11J, X-23003-11K, X-23003-11L, X-23003-11M, X-23003-11N, X-23003-11O, X-23003-11P, X-23003-11Q, X-23003-11R, X-23003-11S, X-23003-11T, X-23003-11U, X-23003-11V, X-23003-11W, X-23003-11X, X-23003-11Y, X-23003-11Z, X-23003-12A, X-23003-12B, X-23003-12C, X-23003-12D, X-23003-12E, X-23003-12F, X-23003-12G, X-23003-12H, X-23003-12I, X-23003-12J, X-23003-12K, X-23003-12L, X-23003-12M, X-23003-12N, X-23003-12O, X-23003-12P, X-23003-12Q, X-23003-12R, X-23003-12S, X-23003-12T, X-23003-12U, X-23003-12V, X-23003-12W, X-23003-12X, X-23003-12Y, X-23003-12Z, X-23003-13A, X-23003-13B, X-23003-13C, X-23003-13D, X-23003-13E, X-23003-13F, X-23003-13G, X-23003-13H, X-23003-13I, X-23003-13J, X-23003-13K, X-23003-13L, X-23003-13M, X-23003-13N, X-23003-13O, X-23003-13P, X-23003-13Q, X-23003-13R, X-23003-13S, X-23003-13T, X-23003-13U, X-23003-13V, X-23003-13W, X-23003-13X, X-23003-13Y, X-23003-13Z, X-23003-14A, X-23003-14B, X-23003-14C, X-23003-14D, X-23003-14E, X-23003-14F, X-23003-14G, X-23003-14H, X-23003-14I, X-23003-14J, X-23003-14K, X-23003-14L, X-23003-14M, X-23003-14N, X-23003-14O, X-23003-14P, X-23003-14Q, X-23003-14R, X-23003-14S, X-23003-14T, X-23003-14U, X-23003-14V, X-23003-14W, X-23003-14X, X-23003-14Y, X-23003-14Z, X-23003-15A, X-23003-15B, X-23003-15C, X-23003-15D, X-23003-15E, X-23003-15F, X-23003-15G, X-23003-15H, X-23003-15I, X-23003-15J, X-23003-15K, X-23003-15L, X-23003-15M, X-23003-15N, X-23003-15O, X-23003-15P, X-23003-15Q, X-23003-15R, X-23003-15S, X-23003-15T, X-23003-15U, X-23003-15V, X-23003-15W, X-23003-15X, X-23003-15Y, X-23003-15Z, X-23003-16A, X-23003-16B, X-23003-16C, X-23003-16D, X-23003-16E, X-23003-16F, X-23003-16G, X-23003-16H, X-23003-16I, X-23003-16J, X-23003-16K, X-23003-16L, X-23003-16M, X-23003-16N, X-23003-16O, X-23003-16P, X-23003-16Q, X-23003-16R, X-23003-16S, X-23003-16T, X-23003-16U, X-23003-16V, X-23003-16W, X-23003-16X, X-23003-16Y, X-23003-16Z, X-23003-17A, X-23003-17B, X-23003-17C, X-23003-17D, X-23003-17E, X-23003-17F, X-23003-17G, X-23003-17H, X-23003-17I, X-23003-17J, X-23003-17K, X-23003-17L, X-23003-17M, X-23003-17N, X-23003-17O, X-23003-17P, X-23003-17Q, X-23003-17R, X-23003-17S, X-23003-17T, X-23003-17U, X-23003-17V, X-23003-17W, X-23003-17X, X-23003-17Y, X-23003-17Z, X-23003-18A, X-23003-18B, X-23003-18C, X-23003-18D, X-23003-18E, X-23003-18F, X-23003-18G, X-23003-18H, X-23003-18I, X-23003-18J, X-23003-18K, X-23003-18L, X-23003-18M, X-23003-18N, X-23003-18O, X-23003-18P, X-23003-18Q, X-23003-18R, X-23003-18S, X-23003-18T, X-23003-18U, X-23003-18V, X-23003-18W, X-23003-18X, X-23003-18Y, X-23003-18Z, X-23003-19A, X-23003-19B, X-23003-19C, X-23003-19D, X-23003-19E, X-23003-19F, X-23003-19G, X-23003-19H, X-23003-19I, X-23003-19J, X-23003-19K, X-23003-19L, X-23003-19M, X-23003-19N, X-23003-19O, X-23003-19P, X-23003-19Q, X-23003-19R, X-23003-19S, X-23003-19T, X-23003-19U, X-23003-19V, X-23003-19W, X-23003-19X, X-23003-19Y, X-23003-19Z, X-23003-20A, X-23003-20B, X-23003-20C, X-23003-20D, X-23003-20E, X-23003-20F, X-23003-20G, X-23003-20H, X-23003-20I, X-23003-20J, X-23003-20K, X-23003-20L, X-23003-20M, X-23003-20N, X-23003-20O, X-23003-20P, X-23003-20Q, X-23003-20R, X-23003-20S, X-23003-20T, X-23003-20U, X-23003-20V, X-23003-20W, X-23003-20X, X-23003-20Y, X-23003-20Z, X-23003-21A, X-23003-21B, X-23003-21C, X-23003-21D, X-23003-21E, X-23003-21F, X-23003-21G, X-23003-21H, X-23003-21I, X-23003-21J, X-23003-21K, X-23003-21L, X-23003-21M, X-23003-21N, X-23003-21O, X-23003-21P, X-23003-21Q, X-23003-21R, X-23003-21S, X-23003-21T, X-23003-21U, X-23003-21V, X-23003-21W, X-23003-21X, X-23003-21Y, X-23003-21Z, X-23003-22A, X-23003-22B, X-23003-22C, X-23003-22D, X-23003-22E, X-23003-22F, X-23003-22G, X-23003-22H, X-23003-22I, X-23003-22J, X-23003-22K, X-23003-22L, X-23003-22M, X-23003-22N, X-23003-22O, X-23003-22P, X-23003-22Q, X-23003-22R, X-23003-22S, X-23003-22T, X-23003-22U, X-23003-22V, X-23003-22W, X-23003-22X, X-23003-22Y, X-23003-22Z, X-23003-23A, X-23003-23B, X-23003-23C, X-23003-23D, X-23003-23E, X-23003-23F, X-23003-23G, X-23003-23H, X-23003-23I, X-23003-23J, X-23003-23K, X-23003-23L, X-23003-23M, X-23003-23N, X-23003-23O, X-23003-23P, X-23003-23Q, X-23003-23R, X-23003-23S, X-23003-23T, X-23003-23U, X-23003-23V, X-23003-23W, X-23003-23X, X-23003-23Y, X-23003-23Z, X-23003-24A, X-23003-24B, X-23003-24C, X-23003-24D, X-23003-24E, X-23003-24F, X-23003-24G, X-23003-24H, X-23003-24I, X-23003-24J, X-23003-24K, X-23003-24L, X-23003-24M, X-23003-24N, X-23003-24O, X-23003-24P, X-23003-24Q, X-23003-24R, X-23003-24S, X-23003-24T, X-23003-24U, X-23003-24V, X-23003-24W, X-23003-24X, X-23003-24Y, X-23003-24Z, X-23003-25A, X-23003-25B, X-23003-25C, X-23003-25D, X-23003-25E, X-23003-25F, X-23003-25G, X-23003-25H, X-23003-25I, X-23003-25J, X-23003-25K, X-23003-25L, X-23003-25M, X-23003-25N, X-23003-25O, X-23003-25P, X-23003-25Q, X-23003-25R, X-23003-25S, X-23003-25T, X-23003-25U, X-23003-25V, X-23003-25W, X-23003-25X, X-23003-25Y, X-23003-25Z, X-23003-26A, X-23003-26B, X-23003-26C, X-23003-26D, X-23003-26E, X-23003-26F, X-23003-26G, X-23003-26H, X-23003-26I, X-23003-26J, X-23003-26K, X-23003-26L, X-23003-26M, X-23003-26N, X-23003-26O, X-23003-26P, X-23003-26Q, X-23003-26R, X-23003-26S, X-23003-26T, X-23003-26U, X-23003-26V, X-23003-26W, X-23003-26X, X-23003-26Y, X-23003-26Z, X-23003-27A, X-23003-27B, X-23003-27C, X-23003-27D, X-23003-27E, X-23003-27F, X-23003-27G, X-23003-27H, X-23003-27I, X-23003-27J, X-23003-27K, X-23003-27L, X-23003-27M, X-23003-27N, X-23003-27O, X-23003-27P, X-23003-27Q, X-23003-27R, X-23003-27S, X-23003-27T, X-23003-27U, X-23003-27V, X-23003-27W, X-23003-27X, X-23003-27Y, X-23003-27Z, X-23003-28A, X-23003-28B, X-23003-28C, X-23003-28D, X-23003-28E, X-23003-28F, X-23003-28G, X-23003-28H, X-23003-28I, X-23003-28J, X-23003-28K, X-23003-28L, X-23003-28M, X-23003-28N, X-23003-28O, X-23003-28P, X-23003-28Q, X-23003-28R, X-23003-28S, X-23003-28T, X-23003-28U, X-23003-28V, X-23003-28W, X-23003-28X, X-23003-28Y, X-23003-28Z, X-23003-29A, X-23003-29B, X-23003-29C, X-23003-29D, X-23003-29E, X-23003-29F, X-23003-29G, X-23003-29H, X-23003-29I, X-23003-29J, X-23003-29K, X-23003-29L, X-23003-29M, X-23003-29N, X-23003-29O, X-23003-29P, X-23003-29Q, X-23003-29R, X-23003-29S, X-23003-29T, X-23003-29U, X-23003-29V, X-23003-29W, X-23003-29X, X-23003-29Y, X-23003-29Z, X-23003-30A, X-23003-30B, X-23003-30C, X-23003-30D, X-23003-30E, X-23003-30F, X-23003-30G, X-23003-30H, X-23003-30I, X-23003-30J, X-23003-30K, X-23003-30L, X-23003-30M, X-23003-30N, X-23003-30O, X-23003-30P, X-23003-30Q, X-23003-30R, X-23003-30S, X-23003-30T, X-23003-30U, X-23003-30V, X-23003-30W, X-23003-30X, X-23003-30Y, X-23003-30Z, X-23003-31A, X-23003-31B, X-23003-31C, X-23003-31D, X-23003-31E, X-23003-31F, X-23003-31G, X-23003-31H, X-23003-31I, X-23003-31J, X-23003-31K, X-23003-31L, X-23003-31M, X-23003-31N, X-23003-31O, X-23003-31P, X-23003-31Q, X-23003-31R, X-23003-31S, X-23003-31T, X-23003-31U, X-23003-31V, X-23003-31W, X-23003-31X, X-23003-31Y, X-23003-31Z, X-23003-32A, X-23003-32B, X-23003-32C, X-23003-32D, X-23003-32E, X-23003-32F, X-23003-32G, X-23003-32H, X-23003-32I, X-23003-32J, X-23003-32K, X-23003-32L, X-23003-32M, X-23003-32N, X-23003-32O, X-23003-32P, X-23003-32Q, X-23003-32R, X-23003-32S, X-23003-32T, X-23003-32U, X-23003-32V, X-23003-32W, X-23003-32X, X-23003-32Y, X-23003-32Z, X-23003-33A, X-23003-33B, X-23003-33C, X-23003-33D, X-23003-33E, X-23003-33F, X-23003-33G, X-23003-33H, X-23003-33I, X-23003-33J, X-23003-33K, X-23003-33L, X-23003-33M, X-23003-33N, X-23003-33O, X-23003-33P, X-23003-33Q, X-23003-33R, X-23003-33S, X-23003-33T, X-23003-33U, X-23003-33V, X-23003-33W, X-23003-33X, X-23003-33Y, X-23003-33Z, X-23003-34A, X-23003-34B, X-23003-34C, X-23003-34D, X-23003-34E, X-23003-34F, X-23003-34G, X-23003-34H, X-23003-34I, X-23003-34J, X-23003-34K, X-23003-34L, X-23003-34M, X-23003-34N, X-23003-34O, X-23003-34P, X-23003-34Q, X-23003-34R, X-23003-34S, X-23003-34T, X-23003-34U, X-23003-34V, X-23003-34W, X-23003-34X, X-23003-34Y, X-23003-34Z, X-23003-35A, X-23003-35B, X-23003-35C, X-23003-35D, X-23003-35E, X-23003-35F, X-23003-35G, X-23003-35H, X-23003-35I, X-23003-35J, X-23003-35K, X-23003-35L, X-23003-35M, X-23003-35N, X-23003-35O, X-23003