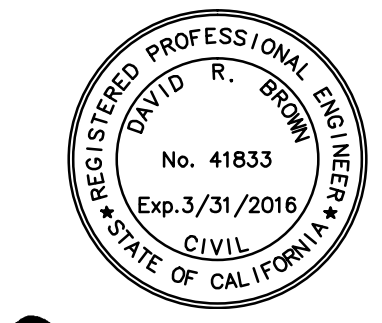


NO.	DATE	ISSUE



David R. Brown, RCE 41833
My license expires 3/31/2016 SEAL

KEY PLAN

Perkins Eastman

23 GEARY STREET, SUITE 500 SAN FRANCISCO, CA 94108
T. 415.926.7300 F. 415.926.7733
1100 LIBERTY AVENUE PITTSBURGH, PA 15222
T. 412.456.0900 F. 412.456.0906

Owner:
EPISCOPAL SENIOR COMMUNITIES, INC.
2185 N. CALIFORNIA BLVD, SUITE 575
WALNUT CREEK, CA 94596
TEL. (925) 956-7355

Civil / Site:
ADOBE ASSOCIATES
1220 NORTH DUTTON AVENUE
SANTA ROSA, CA 95401
TEL. (707) 541-2300

Landscape:
RESOURCE DESIGN
835 PINER ROAD, SUITE E
SANTA ROSA, CA 95403
TEL. (707) 526-5009

Arboret:
HORTICULTURAL ASSOCIATES
P.O. BOX 1261
GLENN ELLEN, CA 95442
TEL. (707) 935-3911

Design & Development Consultant:
GERVAIS & ASSOCIATES
50 SANTA ROSA AVENUE, SUITE 400
SANTA ROSA, CA 95404
TEL. (707) 975-4736

PROJECT TITLE:

**SPRING LAKE VILLAGE
EAST GROVE
DEVELOPMENT**

LOS ALAMOS ROAD
SANTA ROSA, CA 95409

PROJECT No: 53681.00

DRAWING TITLE:

**OFFSITE
PEDESTRIAN PATH
IMPROVEMENTS**

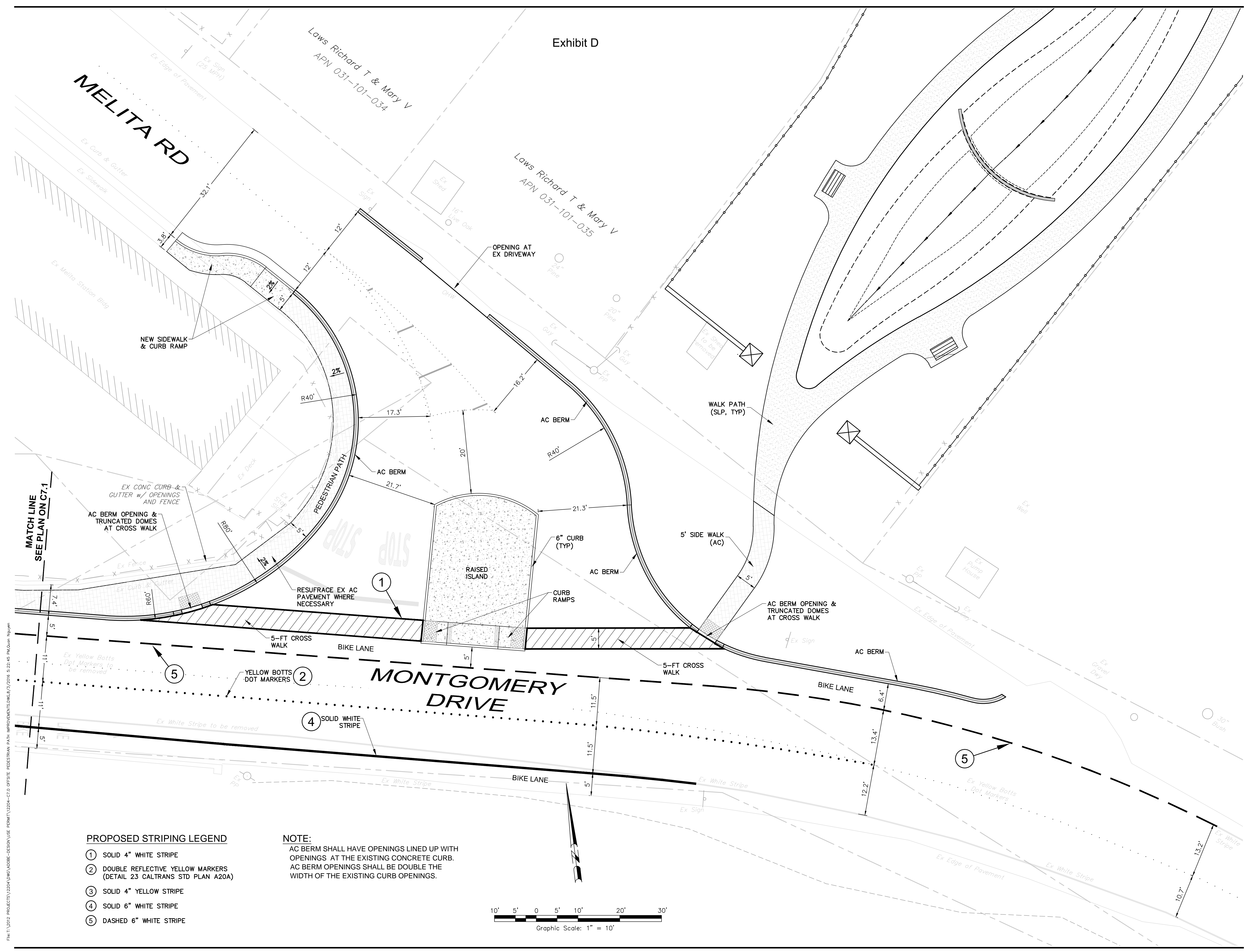
SCALE: SCALE: 1" = 30'

C7.0

PRELIMINARY DESIGN DEVELOPMENT
SUBMISSION

JULY 21, 2016

Exhibit D

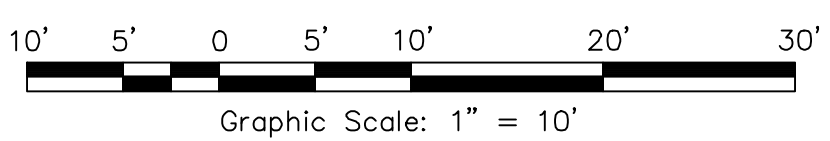


PROPOSED STRIPING LEGEND

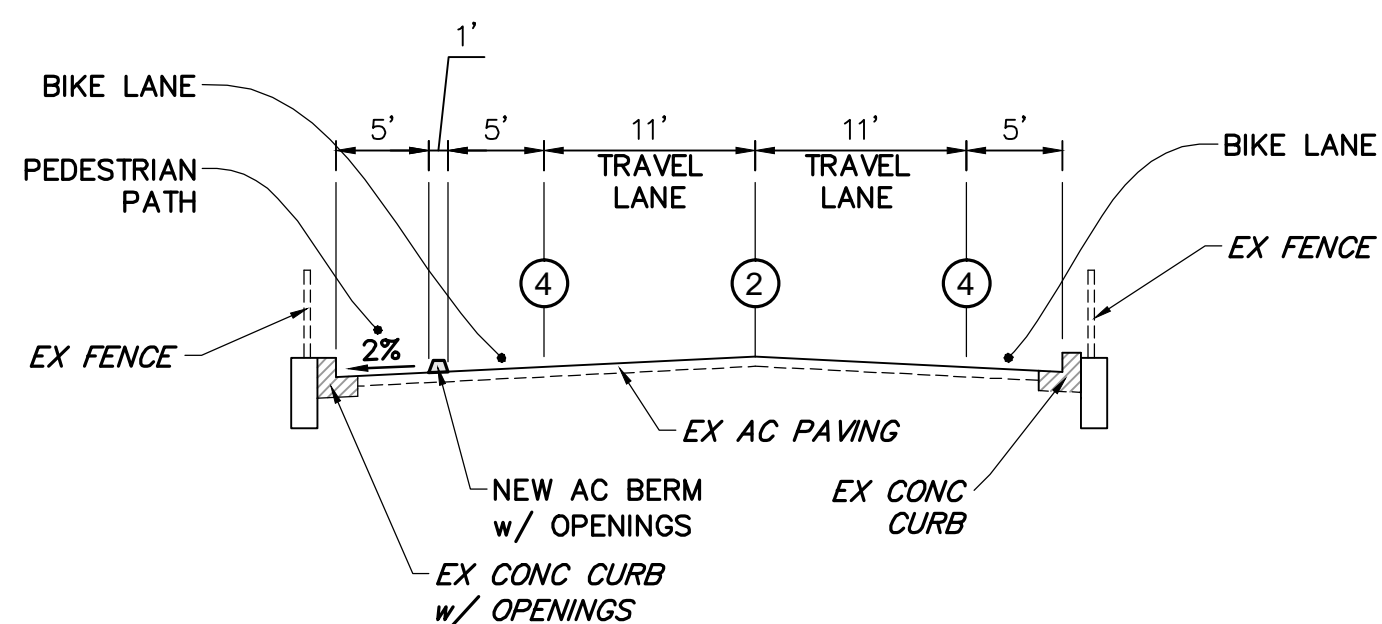
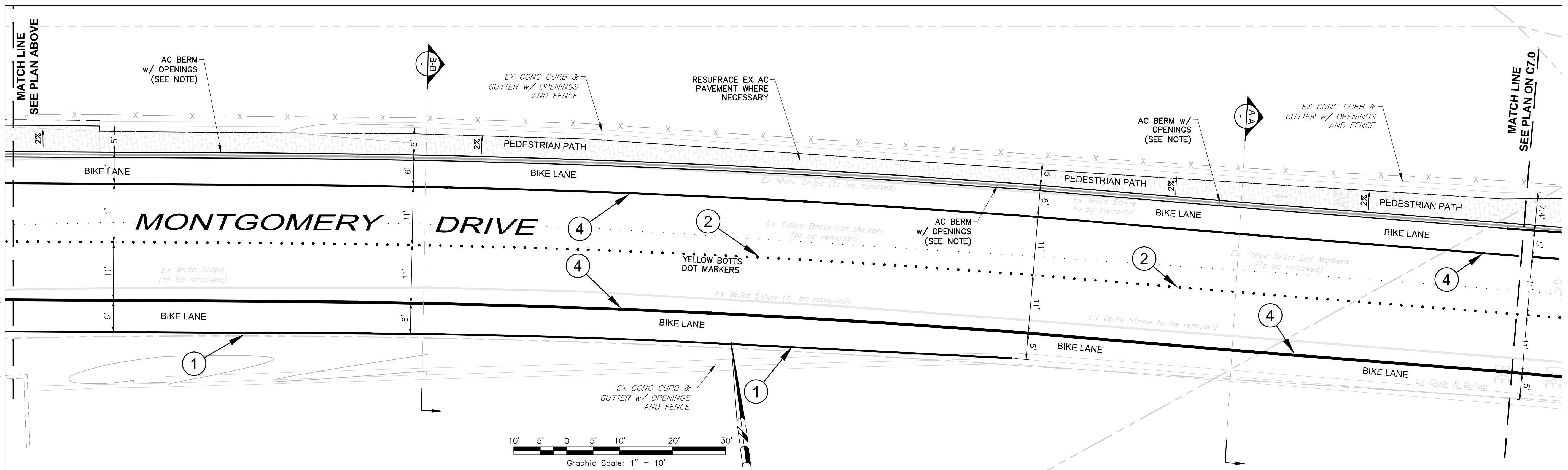
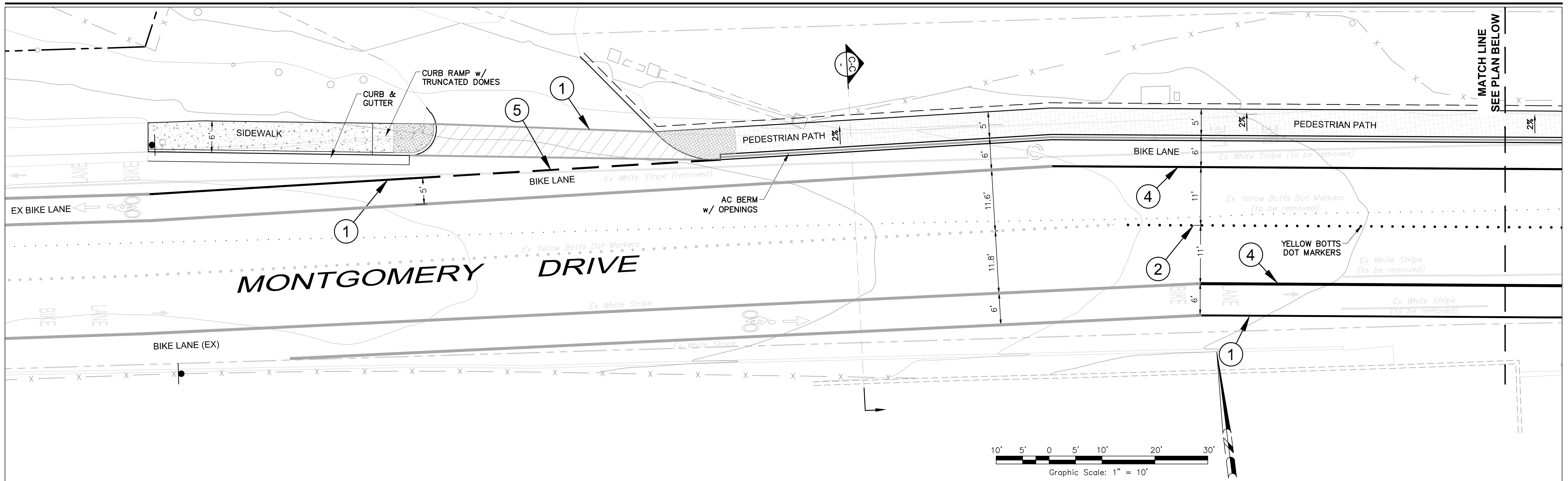
- ① SOLID 4" WHITE STRIPE
- ② DOUBLE REFLECTIVE YELLOW MARKERS (DETAIL 23 CALTRANS STD PLAN A20A)
- ③ SOLID 4" YELLOW STRIPE
- ④ SOLID 6" WHITE STRIPE
- ⑤ DASHED 6" WHITE STRIPE

NOTE:

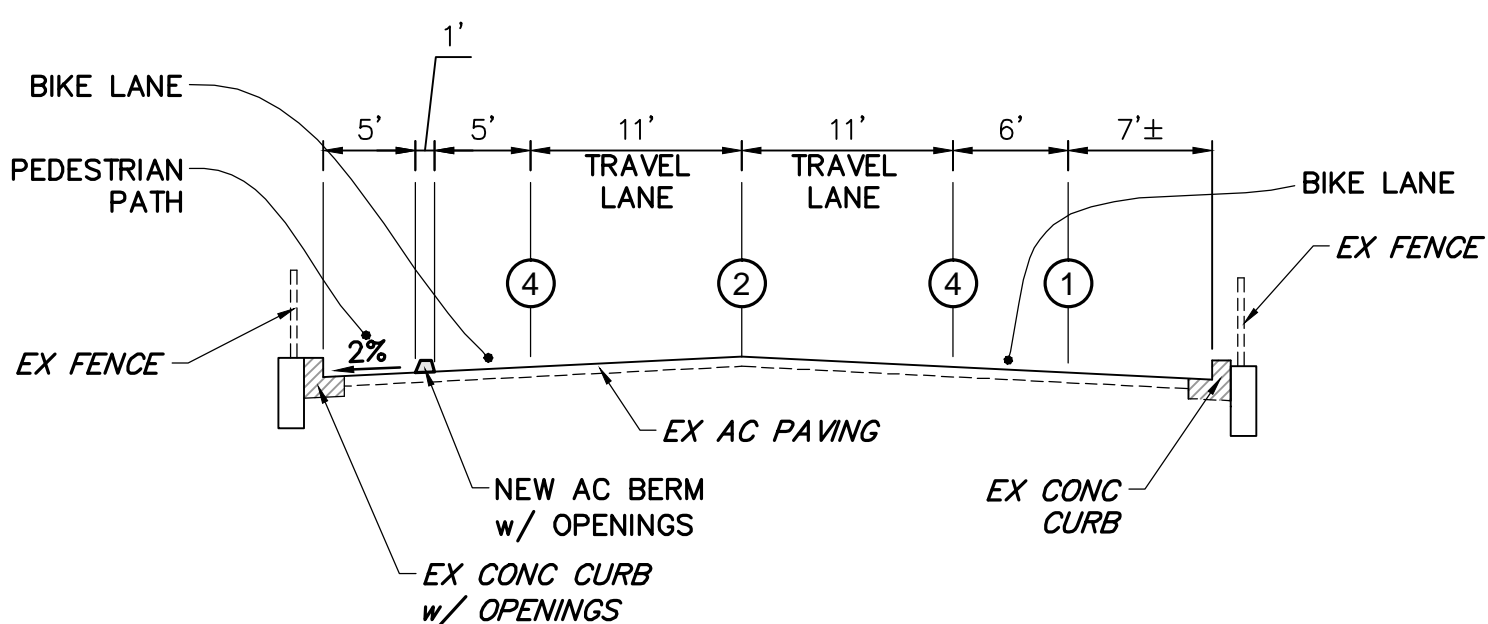
AC BERM SHALL HAVE OPENINGS LINED UP WITH OPENINGS AT THE EXISTING CONCRETE CURB. AC BERM OPENINGS SHALL BE DOUBLE THE WIDTH OF THE EXISTING CURB OPENINGS.



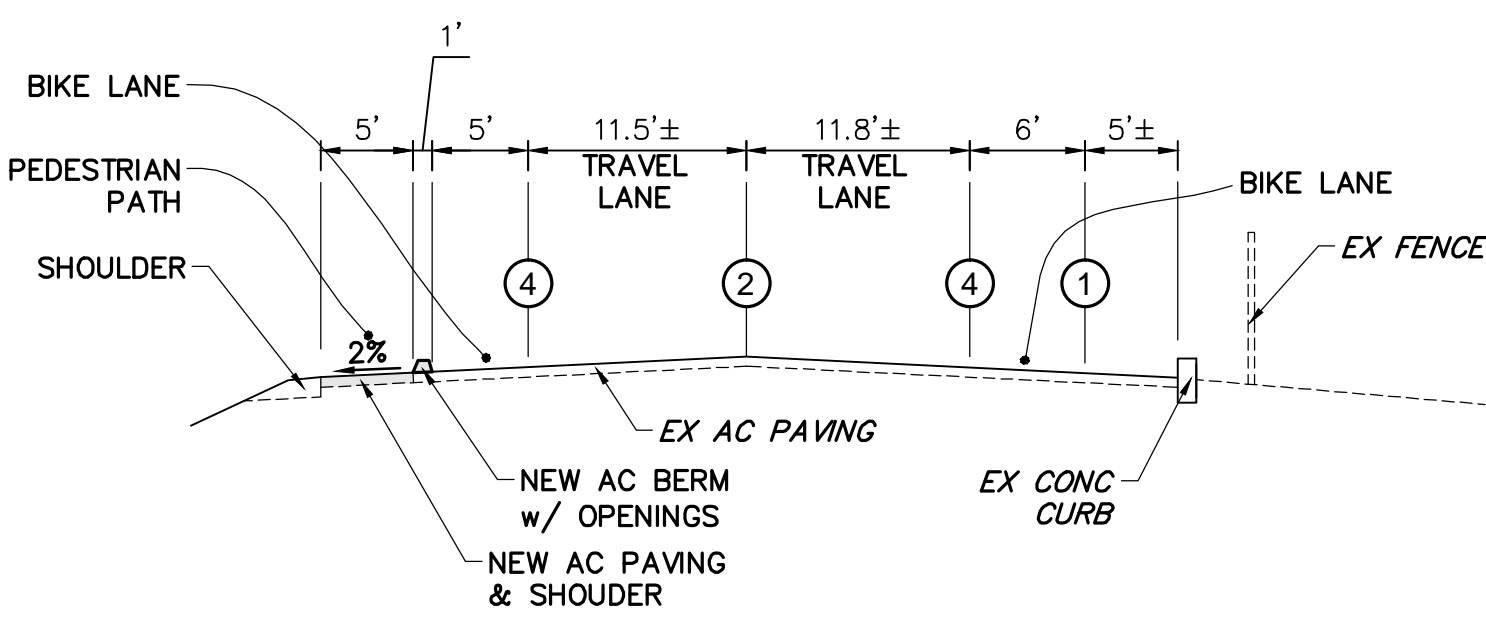
File T:\2012 PROJECTS\2250A\DWG\ADOBES-DESIGN\USE PERMIT\22504-C7.0 OFFSITE PEDESTRIAN PATH IMPROVEMENTS.DWG, 7/2016 9:22:45 PM, D:\user\ngaym



SECTION A-A (C6.0)



SECTION B-B (C6.1)



SECTION C-C (C6.1)

PROPOSED STRIPING LEGEND

- ① SOLID 4" WHITE STRIPE
- ② DOUBLE REFLECTIVE YELLOW MARKERS (DETAIL 23 CALTRANS STD PLAN A20A)
- ③ SOLID 4" YELLOW STRIPE
- ④ SOLID 6" WHITE STRIPE
- ⑤ DASHED 6" WHITE STRIPE

NOTE:
 AC BERM SHALL HAVE OPENINGS LINED UP WITH OPENINGS AT THE EXISTING CONCRETE CURB. AC BERM OPENINGS SHALL BE DOUBLE THE WIDTH OF THE EXISTING CURB OPENINGS.

NO.	DATE	ISSUE



David R. Brown, RCE 41833
 My license expires 3/31/2016

Perkins Eastman
 23 GEARY STREET, SUITE 500 1100 LIBERTY AVENUE
 SAN FRANCISCO, CA 94108 PITTSBURGH, PA 15222
 T. 415.926.7300 T. 412.456.0900
 F. 415.926.7733 F. 412.456.0906

Owner:
 EPISCOPAL SENIOR COMMUNITIES, INC.
 2185 N. CALIFORNIA BLVD., SUITE 575
 WALNUT CREEK, CA 94596
 TEL. (925) 956-7355

Civil / Site:
 ADOBE ASSOCIATES
 1220 NORTH DUTTON AVENUE
 SANTA ROSA, CA 95401
 TEL. (707) 541-2300

Landscape:
 RESOURCE DESIGN
 835 PINER ROAD, SUITE E
 SANTA ROSA, CA 95403
 TEL. (707) 526-5009

Arborist:
 HORTICULTURAL ASSOCIATES
 P.O. BOX 1261
 GLENN ELLEN, CA 95442
 TEL. (707) 935-3911

Design & Development Consultant:
 GERVAIS & ASSOCIATES
 50 SANTA ROSA AVENUE, SUITE 400
 SANTA ROSA, CA 95404
 TEL. (707) 975-4736

PROJECT TITLE:
 SPRING LAKE VILLAGE
 EAST GROVE
 DEVELOPMENT

LOS ALAMOS ROAD
 SANTA ROSA, CA 95409

PROJECT No: 53681.00

DRAWING TITLE:
 OFFSITE
 PEDESTRIAN PATH
 IMPROVEMENTS &
 STREET SECTIONS

SCALE: 1" = 30'
C7.1
 PRELIMINARY DESIGN DEVELOPMENT
 SUBMISSION
 JULY 21, 2016

File: T:\2012 PROJECTS\2250A\DWG\DESIGN\DESIGN\USE PERMIT\2250A-C7.0 OFFSITE PEDESTRIAN PATH IMPROVEMENTS.DWG/2/2016 4:36:53 PM/Don Nguyen