

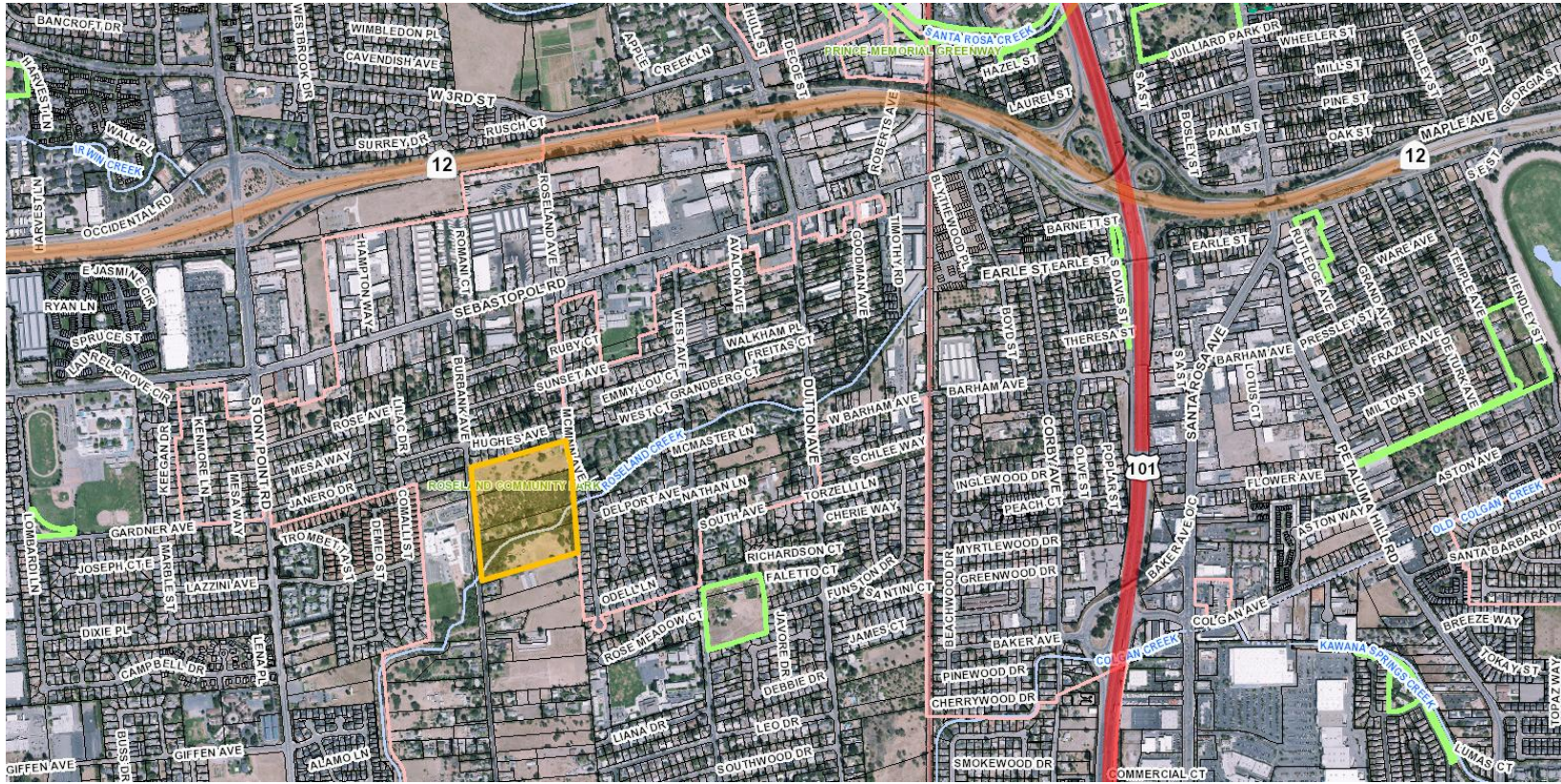


# Professional Services Agreement with David J. Powers and Associates, Inc. for environmental review and declaration services for Roseland Creek Community Park

City Council Meeting  
February 28, 2017

Jen Santos  
Deputy Director, Recreation and Parks

# LOCATION MAP



= Roseland Creek Community Park

# PARK PROPERTY MAP



Roseland Creek Community Park environmental analysis includes all parcels outlined in orange

# BACKGROUND

- Roseland Creek Community Park north and south land acquired via Sonoma County Agricultural Preservation and Open Space District (SCAPOS D) matching grant program in 2010 and 2011
- Project to acquire remaining land admitted into 2016 SCAPOS D grant cycle

# BACKGROUND

- Environmental analysis reliant on 30% plans (by a separate design consultant) to complete the analysis
- Environmental analysis aligned with 30% design ensures adopted Master Plan will comply with CEQA

# PROCESS

- RFP February 2016; 6 proposals received
- Scoring and review by panel (staff and a Council member)
- David J. Powers and Associates most qualified and responsive

# RECOMMENDATION

- It is recommended by the Recreation and Parks Department that Council, by resolution, approve a Professional Services Agreement with David J. Powers and Associates, Inc. to provide environmental review and declaration services for Roseland Creek Community Park in the amount of \$146,960.

Questions?