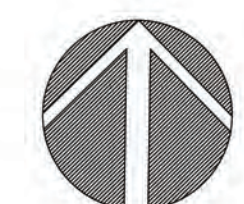


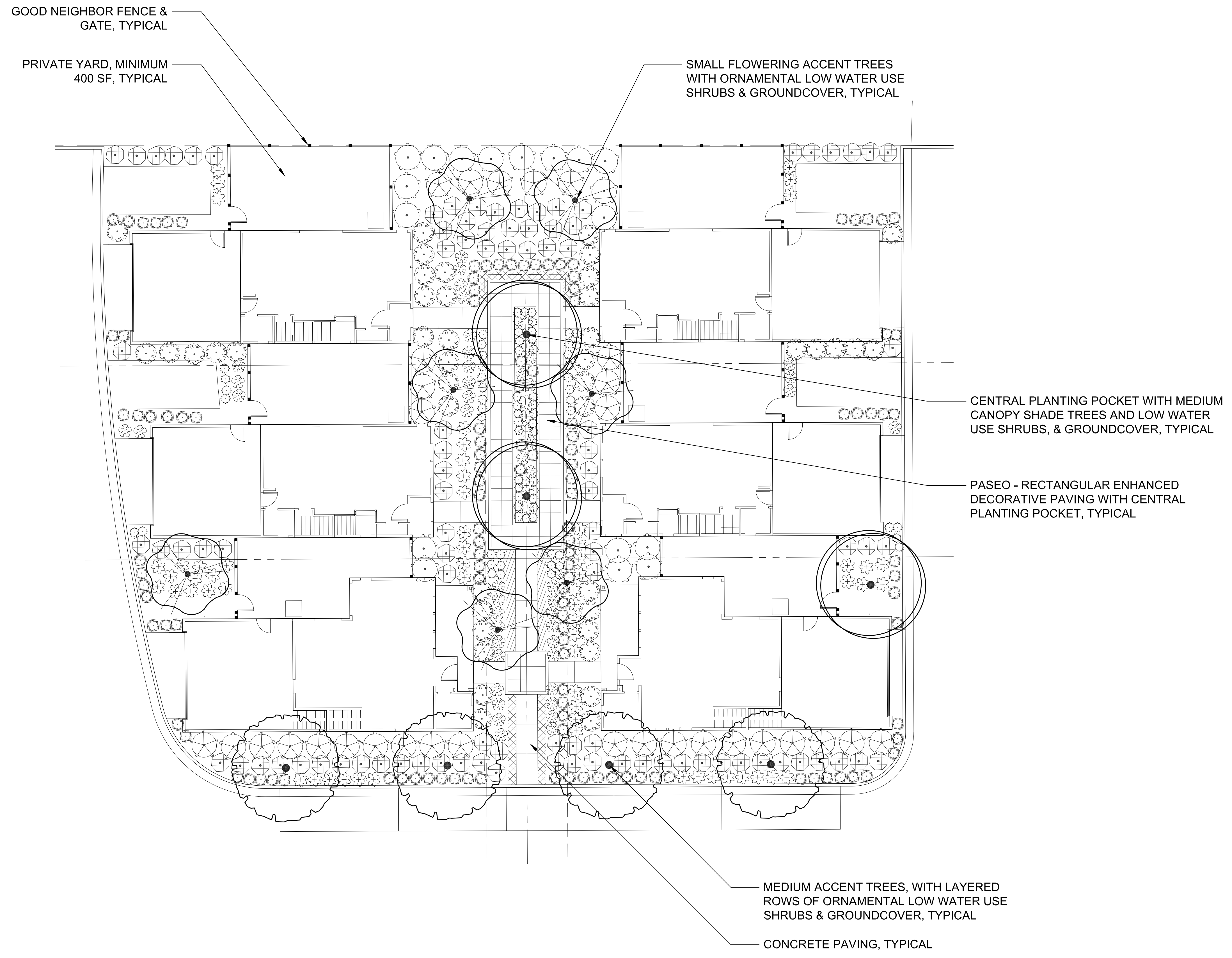
PLANTING DESIGN & WATER EFFICIENCY

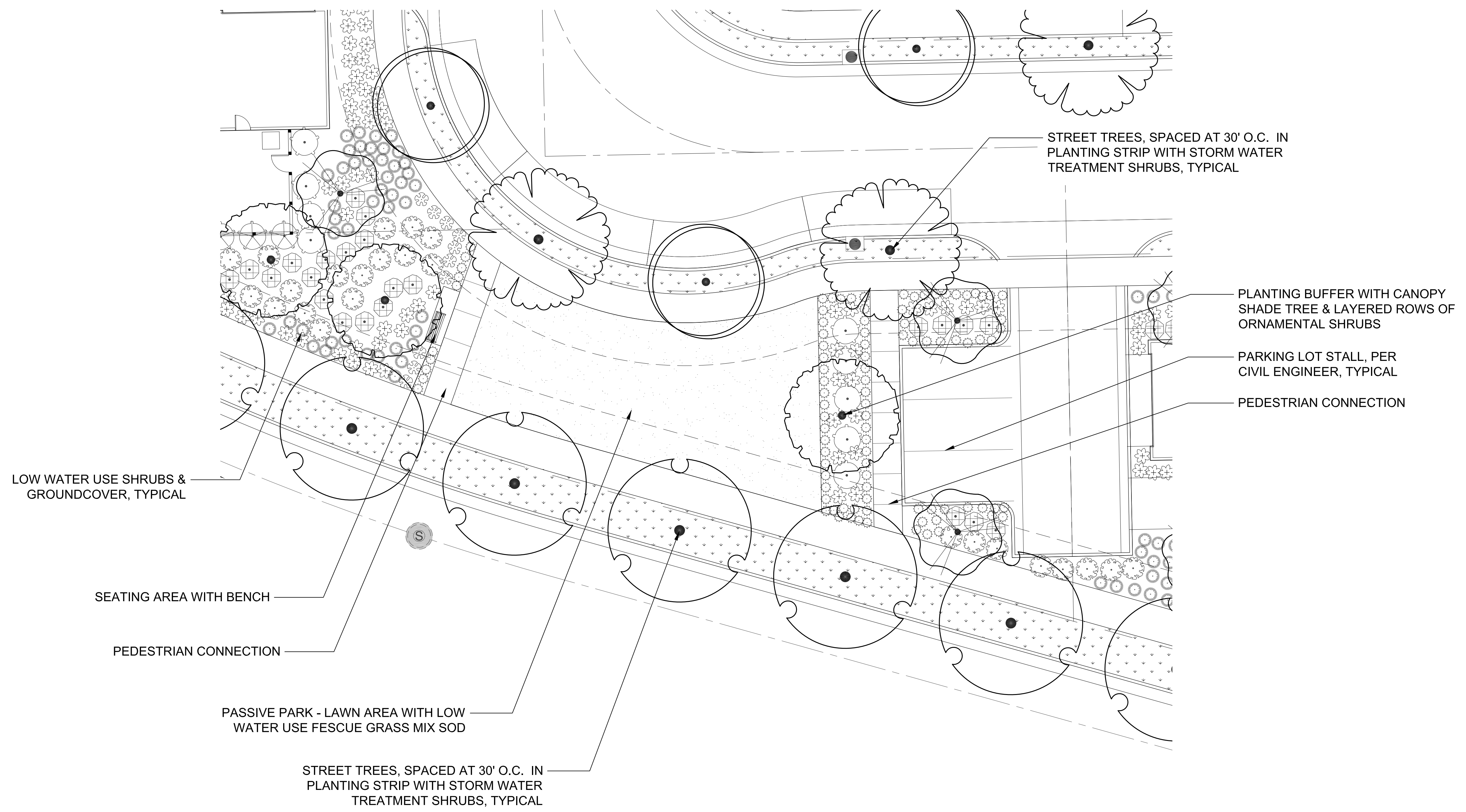
1. THE PLANTING DESIGN INCORPORATES PRINCIPLES INCLUDED IN THE "BAY FRIENDLY LANDSCAPE GUIDELINES".
2. PLANTS ARE SELECTED FOR LOCAL CLIMATIC CONDITIONS AND ARE GROUPED BY HYDROZONE AND EXPOSURE. THE PLANTING DESIGN ALLOWS FOR THE PLANTS TO REACH THEIR NATURAL, FULL-GROWN SIZE AND ELIMINATES THE NEED FOR EXCESSIVE PRUNING OR HEDGING.
2. THE PLANTING DESIGN UTILIZES PRIMARILY (80%) LOW WATER USE & NATIVE PLANT SPECIES. RECREATIONAL LAWN AREA WILL BE A LOW WATER USE FESCUE GRASS MIX SOD.
3. ALL LANDSCAPE PLANTING AND IRRIGATION DESIGN WILL COMPLY WITH THE STATE OF CALIFORNIA'S WATER EFFICIENCY REQUIREMENTS AND MEETS OR EXCEEDS THE MAXIMUM APPLIED WATER ALLOWANCE (MAWA).
4. SELECTED TREES HAVE BEEN CHOSEN TO PROVIDE A VARIATION OF HEIGHTS, WIDTHS, COLORS, TEXTURES, AND CHARACTER. TREE LOCATION AND ORIENTATION HAVE BEEN DESIGNED FOR MAXIMUM AESTHETIC EFFECT AND PASSIVE SOLAR BENEFITS.
5. THE PLANTS HAVE BEEN SELECTED UTILIZING THE STATE OF CALIFORNIA'S MODEL WATER EFFICIENT LANDSCAPE ORDINANCE PLANT LIST, WUCOLS. NO PLANTS ARE USED THAT ARE CONSIDERED INVASIVE IN THE THE REGION AS LISTED BY THE CAL-IPC.
6. SEE CIVIL ENGINEER PLANS FOR ADDITIONAL INFORMATION ON STORMWATER/C-3 TREATMENT MEASURES.

WATER USE DESIGN STATEMENT

THE IRRIGATION SYSTEM WILL COMPLY WITH THE STATE OF CALIFORNIA'S MODEL WATER EFFICIENT LANDSCAPE ORDINANCE AS ADOPTED BY THE CITY OF SANTA ROSA. SYSTEM WILL BE A FULLY AUTOMATIC, LOW GALLON SYSTEM WITH MATCHED PRECIPITATION RATE EMITTERS ON EACH CIRCUIT. THE LOW AND MEDIUM WATER USE HYDROZONES WILL BE ON SEPARATE VALVE CIRCUITS. ALL NEW TREES WILL HAVE SEPARATE DRIP OR BUBBLER CIRCUITS. THE REMOTE CONTROL VALVES WILL HAVE INTEGRAL PRESSURE REGULATORS TO PREVENT FLUCTUATIONS AND ENSURE CONSTANT APPLICATION RATES TO MINIMIZE OVER OR UNDER WATERING. THE ELECTRONIC IRRIGATION CONTROLLER WILL BE WEATHER BASED AND MAKE AUTOMATIC ADJUSTMENTS BASED ON CURRENT CLIMATE ALONG WITH MULTIPLE PROGRAMS AND APPLICATION CYCLES/START TIMES. A RAIN SWITCH WILL BE INSTALLED TO PREVENT IRRIGATION DURING RAINY PERIODS. A FLOW SENSOR AND MASTER VALVE WILL BE CONNECTED TO THE CONTROLLER TO ALLOW AUTOMATIC SHUT OFF OF ANY VALVE CIRCUIT OR MAIN LINE IN THE EVENT OF A PIPE BRAKE TO PREVENT WATER WASTE.









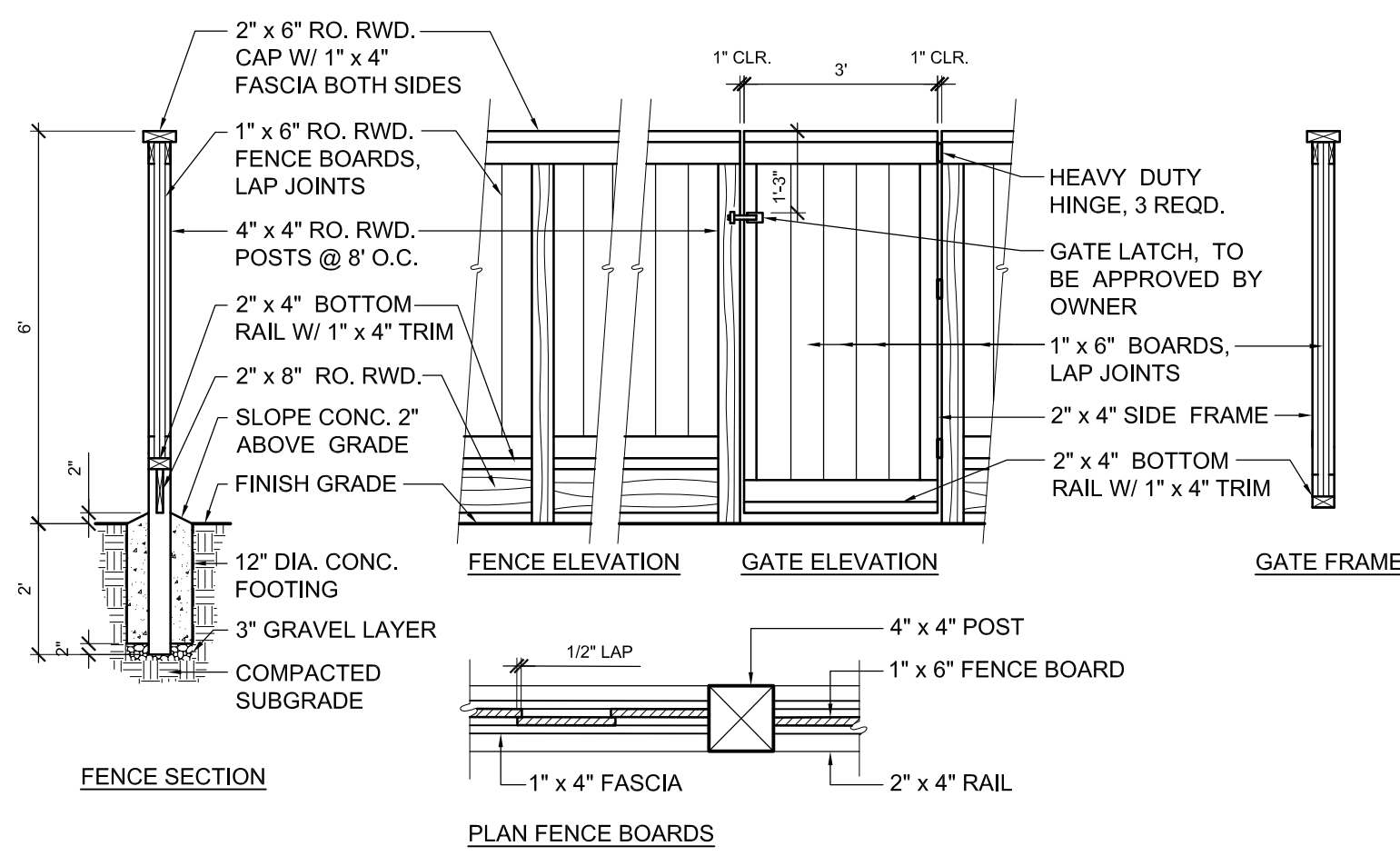
CONCRETE PAVING

N/A



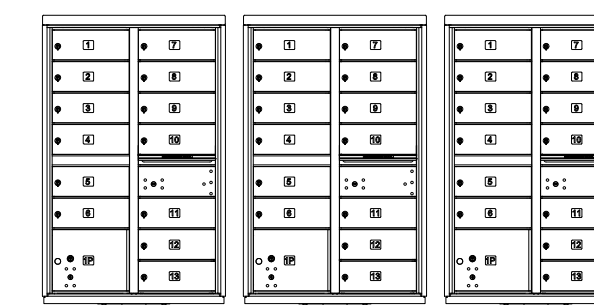
ENHANCED DECORATIVE PAVING

N/A



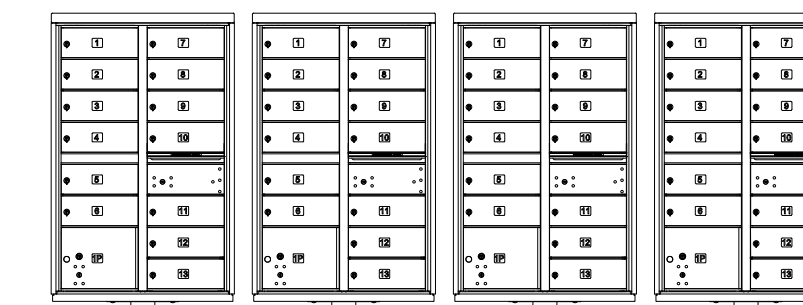
GOOD NEIGHBOR FENCE & GATE

3/8"-1'-0"



3 - 13 UNIT CBU BOXES
UNITS REQUIRED: 37
UNITS PROVIDED: 39

MAILBOX KIOSK LOCATION #1



4 - 13 UNIT CBU BOXES
UNITS REQUIRED: 50
UNITS PROVIDED: 52

MAILBOX KIOSK LOCATION #2 & #3



MAILBOX KIOSK

3/8"-1'-0"



BENCH

N/A

TREE PALETTE

STREET TREES

SYMBOL	BOTANICAL NAME	COMMON NAME	CONT	WATER USE	MATURE HEIGHT & SPREAD
	ACER RUBRUM 'GERLING'	GERLING RED MAPLE	15 GAL	M	35'H X 35'W
	CARPINUS BETULUS 'FASTIGIATA'	EUROPEAN HORNBEAM	15 GAL	M	30'H X 25'W
	CERCIS CANADENSIS	EASTERN REDBUD	15 GAL	M	25'-35'H X 25'-35'W
	CHITALPA TASHKENTENSIS	CHITALPA	15 GAL	L	35'H X 30'W
	GINKGO BILOBA	MAIDENHAIR TREE	15 GAL	M	35'-50'H X 25'-40'W
	KOELREUTERIA BIPINNATA	CHINESE FLAME TREE	15 GAL	M	25'-40'H X 25'-30'W
	LAURUS X 'SARATOGA'	SARATOGA HYBRID LAUREL	15 GAL	L	25'-30'H X 25'-30'W
	QUERCUS ILEX	HOLLY OAK	15 GAL	L	30-60'H X 30-60'W

MEDIUM ACCENT TREES

SYMBOL	BOTANICAL NAME	COMMON NAME	CONT	WATER USE	MATURE HEIGHT & SPREAD
	GINKGO BILOBA 'PRICETON SENTRY'	MAIDENHAIR TREE	15 GAL	M	45'H X 20'W
	LAURUS NOBILIS 'SARATOGA'	SWEET BAY	15 GAL	L	30'H X 20'W
	LYONOTHAMNUS FLORIBUNDUS	IRONWOOD	15 GAL	L	30'H X 20'W
	ROBINIA 'PURPLE ROBE'	LOCUST	15 GAL	L	40'H X 30'W
	PISTACIA CHINENSIS	CHINESE PISTACHE	15 GAL	L	35'H X 30'W

SMALL ACCENT TREES

SYMBOL	BOTANICAL NAME	COMMON NAME	CONT	WATER USE	MATURE HEIGHT & SPREAD
	ACER PALMATUM 'SANGO KAKU'	CORAL BARK MAPLE	15 GAL	M	25'H X 20'W
	GEIJERA PARVIFLORA	AUSTRALIAN WILLOW	15 GAL	L	25'H X 20'W
	LAGERSTROEMIA 'MUSKOGEE'	CRAPE MYRTLE	15 GAL	L	25'H X 15'W
	MAGNOLIA X SOULANGEANA	SAUCER MAGNOLIA	15 GAL	M	25'H X 25'W
	PRUNUS YEDOENSIS 'AKEBONO'	FLOWERING CHERRY	15 GAL	M	25'H X 25'W
	RHUS LANCEA	AFRICAN SUMAC	15 GAL	L	20'H X 20'W

SHRUB, STORM WATER SHRUB, VINE, & GROUND COVER PALETTE

SHRUBS

SYMBOL	BOTANICAL NAME	COMMON NAME	CONT	WATER USE	MATURE HEIGHT & SPREAD
LARGE					
	LAVATERA ASSURGENTIFLORA	MALLOW	5 GAL	L	10'H X 10'W
	NANDINA DOMESTICA	HEAVENLY BAMBOO	5 GAL	L	6'H X 4'W
	PITTOSPORUM TOBIRA 'VARIAGATA'	VARIAGATED TOBIRA	5 GAL	L	5'H X 5'W
	PRUNUS CAROLINIANA 'BRIGHT 'N TIGHT'	CAROLINA LAUREL	5 GAL	L	8'H X 7'W
	RHAMNUS INDICA 'SPRINGTIME'	INDIAN HAWTHORN	5 GAL	L	5'H X 5'W
	XYLOSMA CONGESTUM	SHINY XYLOSMA	5 GAL	L	10'H X 10'W
MEDIUM					
	ANISODONTEA X HYPOMANDARUM	CAPE MALLOW	5 GAL	M	4'H X 4'W
	ASPIDISTRA ELATIOR	CAST IRON PLANT	1 GAL	L	3'H X 3'W
	CAMELLIA SASANQUA 'SHISHI GASHIRA'	SHISHI GASHIRA CAMELLIA	5 GAL	M	3'H X 6'W
	COLEONEMA PULCHRUM	PINK BREATH OF HEAVEN	5 GAL	M	5'H X 5'W
	DIETES BICOLOR	FORTNIGHT LILY	1 GAL	L	3'H X 3'W
	EURYOPS SPECIES	DAISY	5 GAL	L	4'H X 4'W
	FESTUCA MAIREI	ATLAS FESCUE	1 GAL	L	3'H X 3'W
	GREVILLEA 'NOELII'	GREVILLEA	5 GAL	L	4'H X 5'W
	LAVANDULA ANGUSTIFOLIA	ENGLISH LAVENDER	1 GAL	L	2'H X 3'W
	LOMANDRA LONGIFOLIA 'BREEZE'	DWARF MAT RUSH	1 GAL	L	3'H X 3'W
	LORAPETALUM 'SHANG-WHITE'	EMERALD SNOW FRINGE	5 GAL	L	4'H X 3'W
	NEPHROLEPIS CORDIFOLIA	SOUTHERN SWORD FERN	1 GAL	M	3'H X 3'W
	PHORMIUM HYBRIDS	FLAX	5 GAL	L	4'H X 3'W
	PIERIS JAPONICA 'PRELUDE'	JAPANESE PIERIS	5 GAL	M	3'H X 3'W
	ROSA 'FLOWER CARPET PINK'	GROUND COVER ROSE	2 GAL	M	2'H X 3'W
	ROSA FLORIBUNDAS 'ICEBERG'	ICEBERG ROSE	5 GAL	M	4'H X 4'W
	ROSMARINUS OFFICINALIS 'TUSCAN BLUE'	ROSEMARY	5 GAL	L	6'H X 3'W
	SALVIA SPECIES	SAGE	5 GAL	L	3.5'H X 3'
	WESTRINGIA FRUTICOSA 'MORNING LIGHT'	COASTAL ROSEMARY	5 GAL	L	3.5'H X 3.5'W
SMALL					
	AGAPANTHUS SPECIES	LILY OF THE NILE	1 GAL	M	2'H X 2'W
	CALLISTEMON 'LITTLE JOHN'	BOTTLE BRUSH	1 GAL	L	3'H X 3'W
	FESTUCA OVINA GLAUCA	BLUE FESCUE	1 GAL	L	1'H X 1'W
	LANTANA 'DWARF YELLOW'	DWARF LANTANA	1 GAL	L	2'H X 3'W
	LIRIOPE MUSCARI	LILYTURF	1 GAL	M	2'H X 2'W
	PHORMIUM HYBRIDS 'TONEY TIGER'	FLAX	1 GAL	L	2'H X 2'W
	SANTOLINA VIRENS	GREEN LAVENDER COTTON	1 GAL	L	2.5'H X 2.5'W

STORMWATER TREATMENT

SYMBOL	BOTANICAL NAME	COMMON NAME	CONT	WATER USE	MATURE HEIGHT & SPREAD
	ACHILLEA MILLEFOLIUM	COMMON YARROW	1 GAL	L	3'H X 3'W
	CAREX PRAEGACILIS	FIELD SEDGE	1 GAL	M	1'H X 1'W
	CHONDROPETALUM TECTORUM	CAPE RUSH	1 GAL	L	3'H X 3'W
	DESCHAMPSIA C. 'NORTHERN LIGHTS'	TUFTED HAIRGRASS	1 GAL	L	1'H X 1'W
	FESTUCA MAIREI	ATLAS FESCUE	1 GAL	L	2.5'H X 3'W
	FESTUCA 'NO MOW'	NO MOW FESCUE	1 GAL	L	2'H X 2'W
	JUNCUS PATENS	CALIFORNIA RUSH	1 GAL	L	2'H X 2'W
	LOMANDRA BREEZE	DWARF MAT RUSH	1 GAL	L	3'H X 3'W
	MAHONIA REPENS	CREeping OREGON GRAPE	1 GAL	M	1'H X 3'W

VINES

SYMBOL	BOTANICAL NAME	COMMON NAME	CONT	WATER USE	MATURE HEIGHT & SPREAD
	CLEMATIS ARMANDII	EVERGREEN CLEMATIS	15 GAL	M	15'H X 15'W
	CLYTOSTOMA CALLISTEGIOIDES	VIOLET TRUMPET VINE	15 GAL	M	17'H X 17'W
	HARDENBERGIA VIOLACEA 'HAPPY WANDERER'	LILAC VINE	15 GAL	M	14'H X SPREADING
	JASMINUM POLYANTHUM	JASMINE	15 GAL	M	25'W X SPREADING
	ROSA BANKSIAE 'LUTEA'	BANKSIA ROSE	15 GAL	M	17'H X 20'W

GROUND COVER

SYMBOL	BOTANICAL NAME	COMMON NAME	CONT	WATER USE	MATURE HEIGHT & SPREAD
	ARCTOSTAPHYLOS SPECIES	CARPET MANZANITA	4" POT	L	1'H X 5'W
	ECHEVERIA SPECIES	ECHEVERIA	4" POT	L	6"H X 6" W
	ERODIUM REICHARDII	ALPINE GERANIUM	4" POT	L	3'H X 12" W
	CEANOTHUS SPECIES	CALIFORNIA LILAC	4" POT	VL	1'H X 10" W
	CORPOSMA KRIKII 'VARIEGATA'	CREeping CORPOSMA	4" POT	L	1'H X 5'W
	MYOPORUM PARVIFOLIUM	MYOPORUM	4" POT	L	1'H X 7'W
	SEDUM SPECIES	STONECROP	4" POT	L	1'H X 2'W

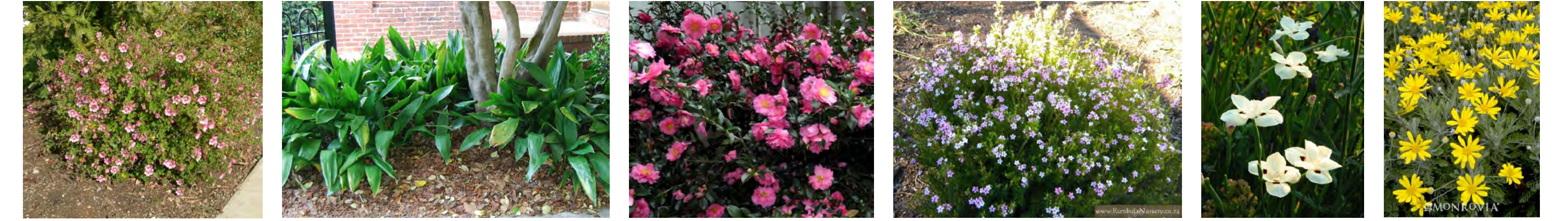
LAWN

	LOW WATER USE FESCUE GRASS MIX SOD
--	------------------------------------


TREES



SHRUBS, STORMWATER SHRUBS, VINES, GROUNDCOVER



LEGEND

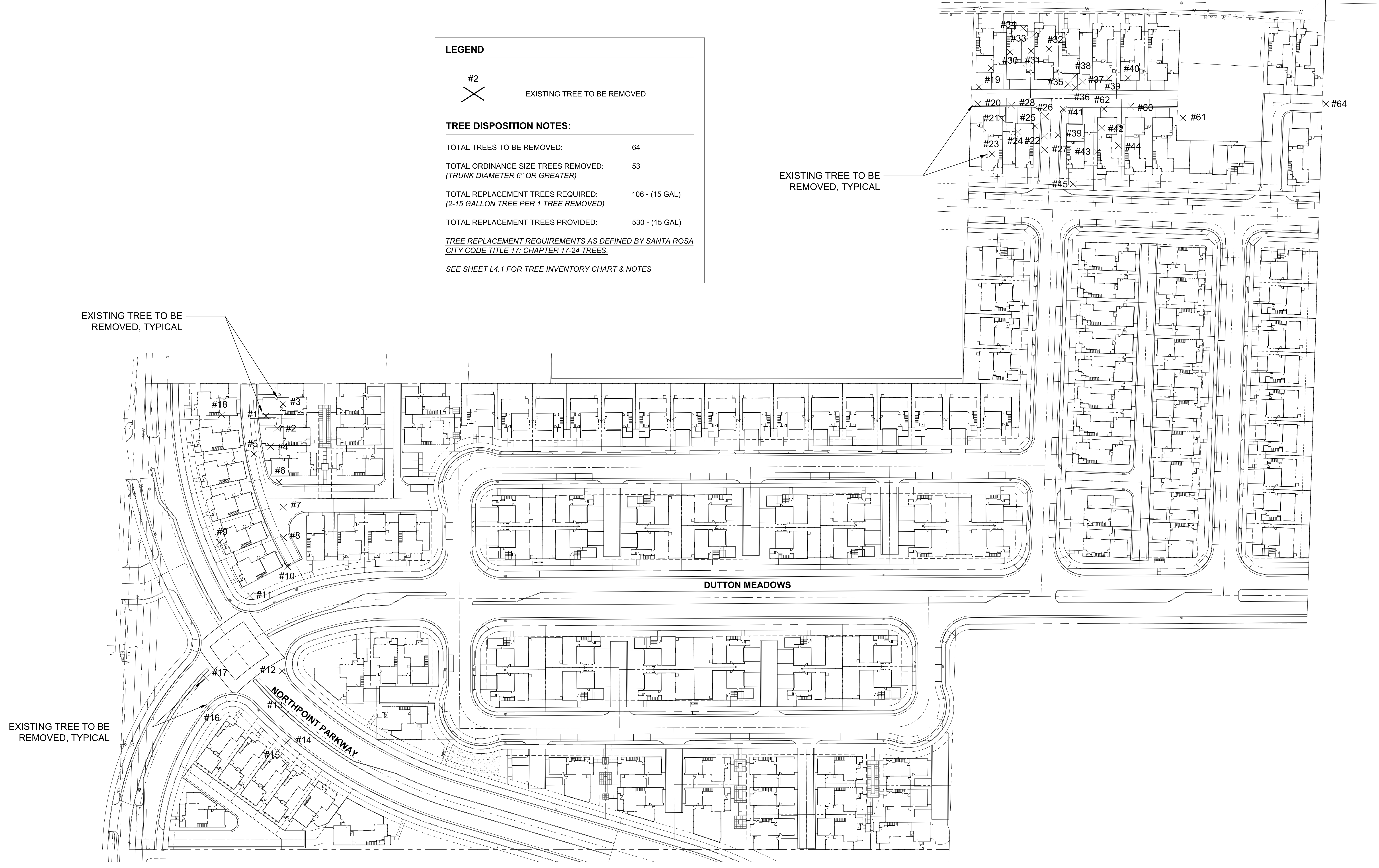
#2
 EXISTING TREE TO BE REMOVED

TREE DISPOSITION NOTES:

TOTAL TREES TO BE REMOVED:	64
TOTAL ORDINANCE SIZE TREES REMOVED: (TRUNK DIAMETER 6" OR GREATER)	53
TOTAL REPLACEMENT TREES REQUIRED: (2-15 GALLON TREE PER 1 TREE REMOVED)	106 - (15 GAL)
TOTAL REPLACEMENT TREES PROVIDED:	530 - (15 GAL)

TREE REPLACEMENT REQUIREMENTS AS DEFINED BY SANTA ROSA CITY CODE TITLE 17: CHAPTER 17-24 TREES.

SEE SHEET L4.1 FOR TREE INVENTORY CHART & NOTES



TREE INVENTORY TABLE															
TREE NO.	SPECIES	TRUNK (DBH ± INCHES)	PRESERVE/ REMOVE	TREE NO.	SPECIES	TRUNK (DBH ± INCHES)	PRESERVE/ REMOVE	TREE NO.	SPECIES	TRUNK (DBH ± INCHES)	PRESERVE/ REMOVE	TREE NO.	SPECIES	TRUNK (DBH ± INCHES)	PRESERVE/ REMOVE
1	JUGLANS NIGRA (BLACK WALNUT)	7+5.5	REMOVE	17	QUERCUS LOBATA (VALLEY OAK)	9.5	REMOVE	33	QUERCUS LOBATA (VALLEY OAK)	10	REMOVE	49	QUERCUS LOBATA (VALLEY OAK)	22	REMOVE
2	QUERCUS LOBOTA (VALLEY OAK)	9	REMOVE	18	SEQUOIA SEMPERVIRENS (COAST REDWOOD)	34	REMOVE	34	CEDRUS DEODARA (DEODAR CEDAR)	24	REMOVE	50	QUERCUS LOBATA (VALLEY OAK)	20	REMOVE
3	QUERCUS LOBOTA (VALLEY OAK)	19.5	REMOVE	19	ALBIZIA JULIBRISSIN (SILK TREE)	6+4+4.5	REMOVE	35	POPULUS NIGRA 'ITALICA' (LOMBARDI POPLAR)	MULTI-STEM	REMOVE	51	QUERCUS LOBATA (VALLEY OAK)	20.5	REMOVE
4	QUERCUS LOBOTA (VALLEY OAK)	11.5	REMOVE	20	QUERCUS LOBATA (VALLEY OAK)	12.5	REMOVE	36	CUPRESSUS SEMPERVIRENS (ITALIAN CYPRESS)	4	REMOVE	52	QUERCUS LOBATA (VALLEY OAK)	17	REMOVE
5	QUERCUS LOBOTA (VALLEY OAK)	4.5	REMOVE	21	OLEA EUROPAEA (OLIVE)	4+3+4+1	REMOVE	37	CUPRESSUS SEMPERVIRENS (ITALIAN CYPRESS)	6	REMOVE	53	QUERCUS LOBATA (VALLEY OAK)	10	REMOVE
6	QUERCUS LOBOTA (VALLEY OAK)	5.5	REMOVE	22	JUGLANS NOBILIS (GRECIAN LAUREL)	5.5+6.5	REMOVE	38	CEDAR DEODARA (DEODAR CEDAR)	17.5	REMOVE	54	JUGLANS REGIA (ENGLISH WALNUT)	5	REMOVE
7	QUERCUS LOBOTA (VALLEY OAK)	9.5	REMOVE	23	LAURUS NOBILIS (GRECIAN LAUREL)	MULTI-STEM	REMOVE	39	QUERCUS LOBATA (VALLEY OAK)	11	REMOVE	55	QUERCUS LOBATA (VALLEY OAK)	12	REMOVE
8	QUERCUS LOBOTA (VALLEY OAK)	36.5	REMOVE	24	ACER NEGUNDO (BOX ELDER)	10	REMOVE	40	QUERCUS LOBATA (VALLEY OAK)	11	REMOVE	56	QUERCUS LOBATA (VALLEY OAK)	13.5	REMOVE
9	LIQUIDAMBAR STYRACIFLUA (LIQUIDAMBAR)	24	REMOVE	25	LIQUIDAMBAR (LIQUID AMBER)	7.5	REMOVE	41	PINUS PINEA (STONE PINE)	33.5	REMOVE	57	JUGLANS REGIA (ENGLISH WALNUT)	5.5+9+7+9+7.5	REMOVE
10	QUERCUS LOBOTA (VALLEY OAK)	39.5	REMOVE	26	ACER JAPONICA (JAPANESE MAPLE)	4.5+2.5+3+3	REMOVE	42	CORNUS FLORIDA (DOGWOOD)	7	REMOVE	58	QUERCUS LOBATA (VALLEY OAK)	6.5	REMOVE
11	SEQUOIA SEMPERVIRENS (COAST REDWOOD)	30	REMOVE	27	JUGLANS REGIA (ENGLISH WALNUT)	18	REMOVE	43	POPULUS NIGRA 'ITALICA' (LOMBARDI POPLAR)	23	REMOVE	59	EUCALYPTUS SPECIES (EUCALYPTUS)	MULTI-STEM	REMOVE
12	SALIX BABYLONICA (WEEPING WILLOW)	39	REMOVE	28	POPULUS TRICHOCARPA (BLACK COTTONWOOD)	12	REMOVE	44	POPULUS NIGRA 'ITALICA' (LOMBARDI POPLAR)	33	REMOVE	60	ACER SPECIES (MAPLE)	4+3.5	REMOVE
13	POPOULUS FREMONTII (POPLAR)	16+17	REMOVE	29	ACER NEGUNDO (BOX ELDER)	7.5	REMOVE	45	SALIX BABYLONICA (WEEPING WILLOW)	40	REMOVE	61	ACER SACCHARIUM (SILVER MAPLE)	±16	REMOVE
14	QUERCUS LOBOTA (VALLEY OAK)	8+9	REMOVE	30	POPULUS NIGRA 'ITALICA' (LOMBARDI POPLAR)	±8+10+12+12	REMOVE	46	SEQUOIA SEMPERVIRENS (COAST REDWOOD)	26	REMOVE	62	PRYUS COMMUNIS (EDIBLE PEAR)	±4+4+4	REMOVE
15	QUERCUS LOBOTA (VALLEY OAK)	9.5+7.5+11.5	REMOVE	31	POPULUS NIGRA 'ITALICA' (LOMBARDI POPLAR)	±4+12+8	REMOVE	47	QUERCUS LOBATA (VALLEY OAK)	8+7+7+7.5	REMOVE	63	CRATAEGUS CORDATA (HAWTHORN)	±14	REMOVE
16	QUERCUS LOBOTA (VALLEY OAK)	11+12	REMOVE	32	ACER SPECIES (MAPLE)	17	REMOVE	48	(QUERCUS LOBATA (VALLEY OAK)	19	REMOVE	64	LIGUSTRUM LUCIDUM (GLOSSY PRIVET)	8+6.5+4.5	REMOVE

NOTES:

1. TREE INVENTORY AS ASSESSED IN ARBORIST REPORT DATED JUNE 5, 2018 BY HORTICULTURAL ASSOCIATES.
2. TREE STATUS AS DEFINED BY CITY OF SANTA ROSA TREE REMOVAL REQUIREMENTS.
3. TREE REPLACEMENT REQUIREMENTS AS DEFINED BY SANTA ROSA CITY CODE TITLE 17: CHAPTER 17-24 TREES.