



VISION ZERO IMPLEMENTATION PLAN UPDATE

City Council Meeting
August 6, 2024

Dan Hennessey, Director
Transportation and Public Works

OUTLINE

- Past Council Action
- Sonoma County Vision Zero Action Plan
- Santa Rosa Implementation Plan
- Current TPW Efforts
- Further Action

Past City Council Action (7/26/22)

- Report Item: Sonoma County Vision Zero Action Plan Background
 - Adopted 7-0
- Report Item: Local Road Safety Plan; Corridor Study and Grant Application
 - Adopted 7-0

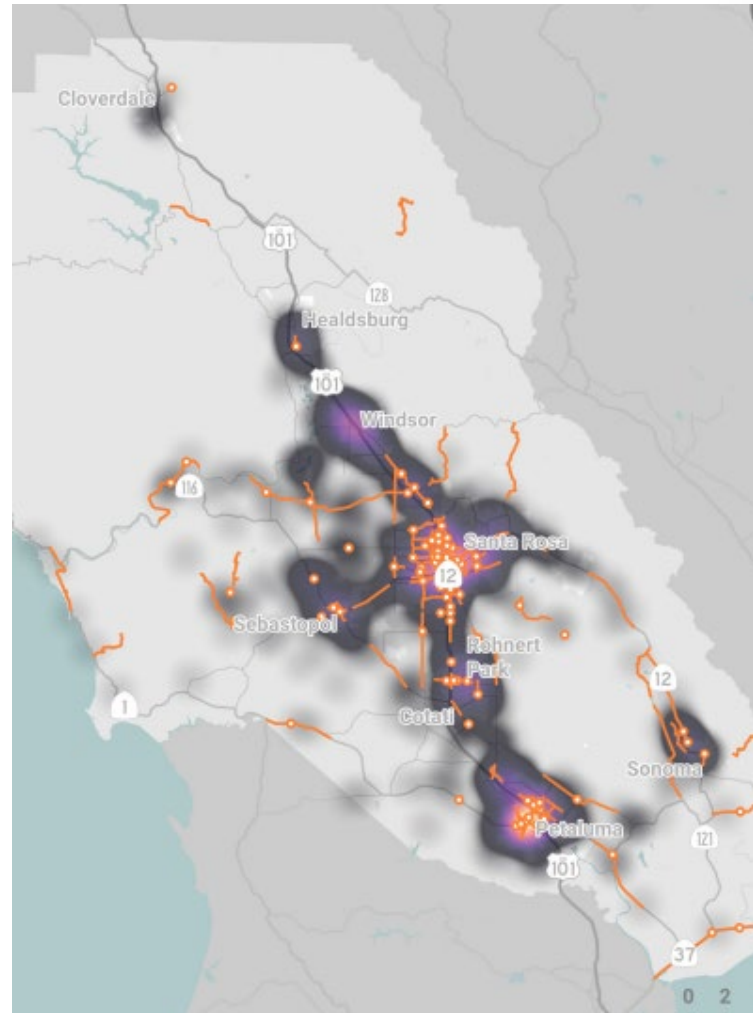
Sonoma County Vision Zero Action Plan (SCVZAP)



Sonoma County Vision Zero Action Plan

March 2022

SONOMA COUNTY
VISION ZERO
End Traffic Deaths by 2030



SCVZAP – Data Dashboard



Welcome to the Sonoma County Vision Zero Data Dashboard.

Using this dashboard, you can visualize different trends and cross-sections in crash data. Click on the control panel below, toggle one of the charts, or select an area on the map. Crashes from 2012-2023 are shown by default, but specific years can be selected below.

Read about the Dashboard and Sonoma County crash trends here: <https://arcg.is/vjCeK>

Jurisdiction
All Jurisdictions

Crash Date
No date selected

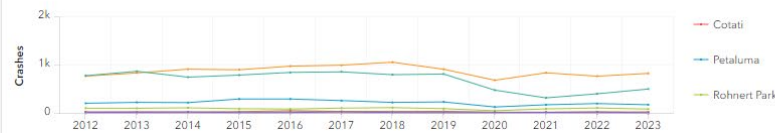
Year

All Years	2012	2013		
2014	2015	2016	2017	
2018	2019	2020	2021	
2022	2023			

Crash data obtained from TIMS is provided by SWITRS and processed by SafeTrec. Most recent data (2022 & 2023) is provisional. Additional detail about the fields in SWITRS can be found here: <https://tims.berkeley.edu/help/SWITRS.php#CoDebook>.

© 2020 California Department of Transportation and Sonoma County Transportation Authority. All Rights Reserved.

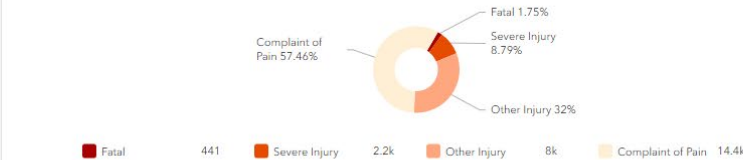
Year and Jurisdiction



Last update: 16 seconds ago

Crashes by Jurisdiction | Crashes over Time | Month of Year | Day of Week | Time of Day

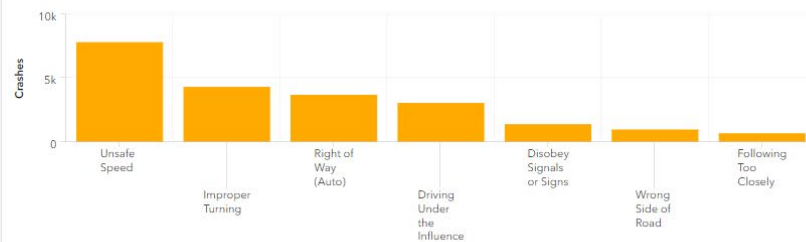
Crashes by Severity



Last update: 16 seconds ago

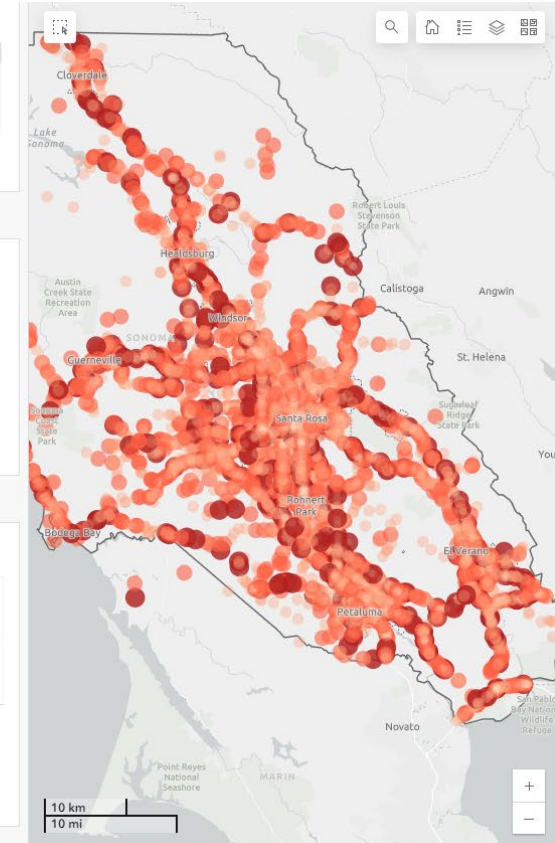
Crashes by Severity | Injuries by Severity | Crashes by Mode | Fatalities by Mode

Violation Category



Last update: 16 seconds ago

Top Crash Factors | Vehicle Crash Type | Speed | Volume | Weather | Lighting



City of Santa Rosa, California State Parks, Esri, TomTom, Garmin, SafeGraph, ... Powered by Esri

SCVZAP – Crash Factors

Figure 7: Top Crash Factors for All Crashes (2016-2020)

1. Unsafe Speed



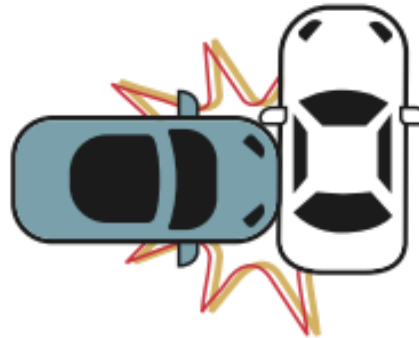
31%
of Crashes

2. Unsafe Turns



16%
of Crashes

3. Right of Way



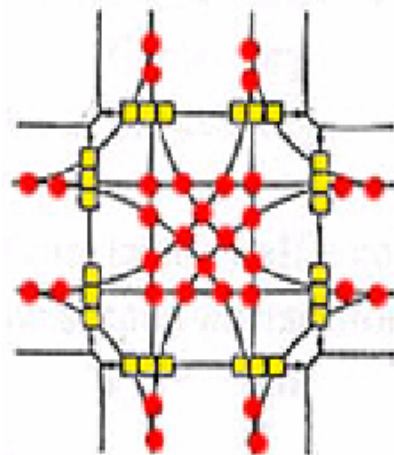
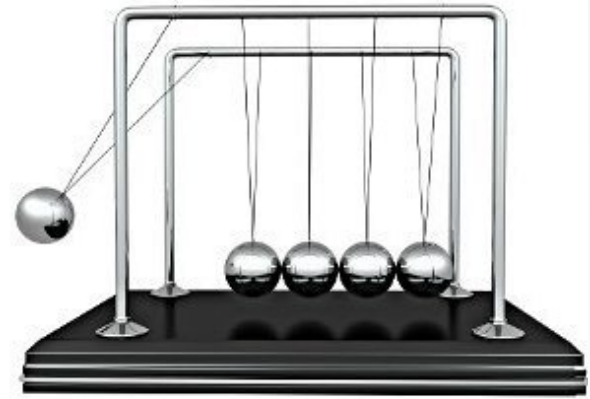
15%
of Crashes

4. Impaired Driving



11%
of Crashes

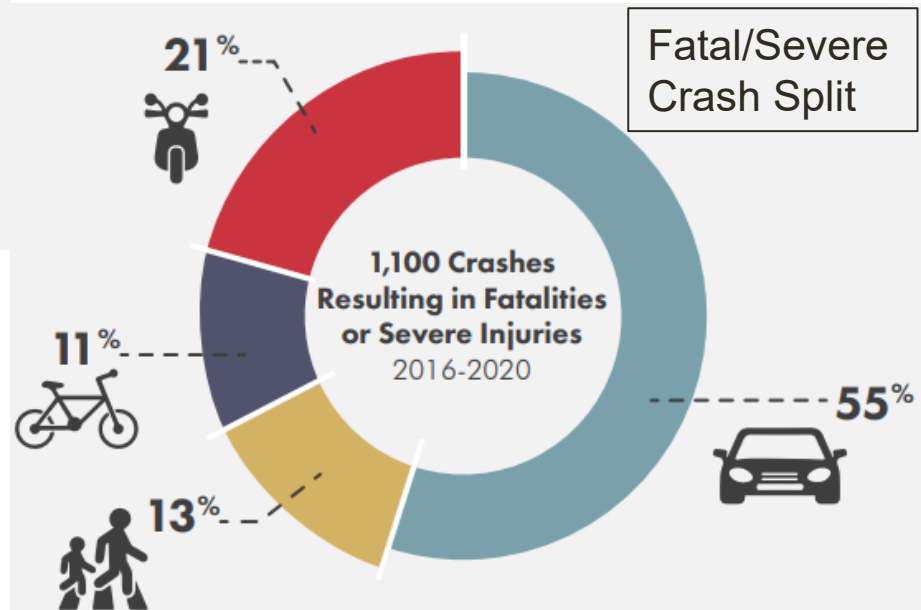
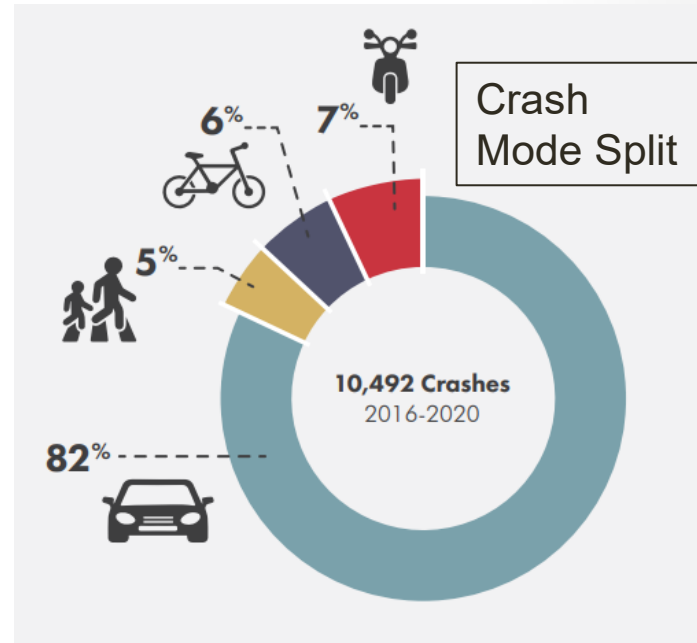
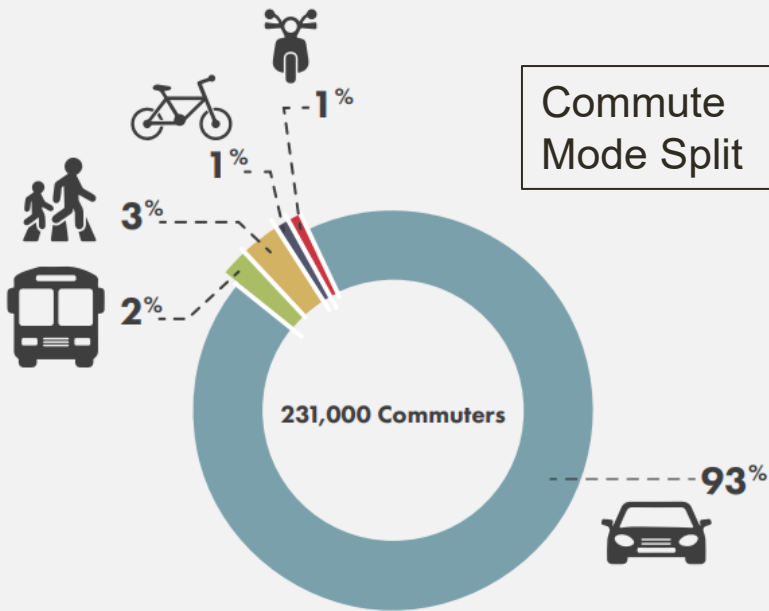
Kinetic Energy Transfer



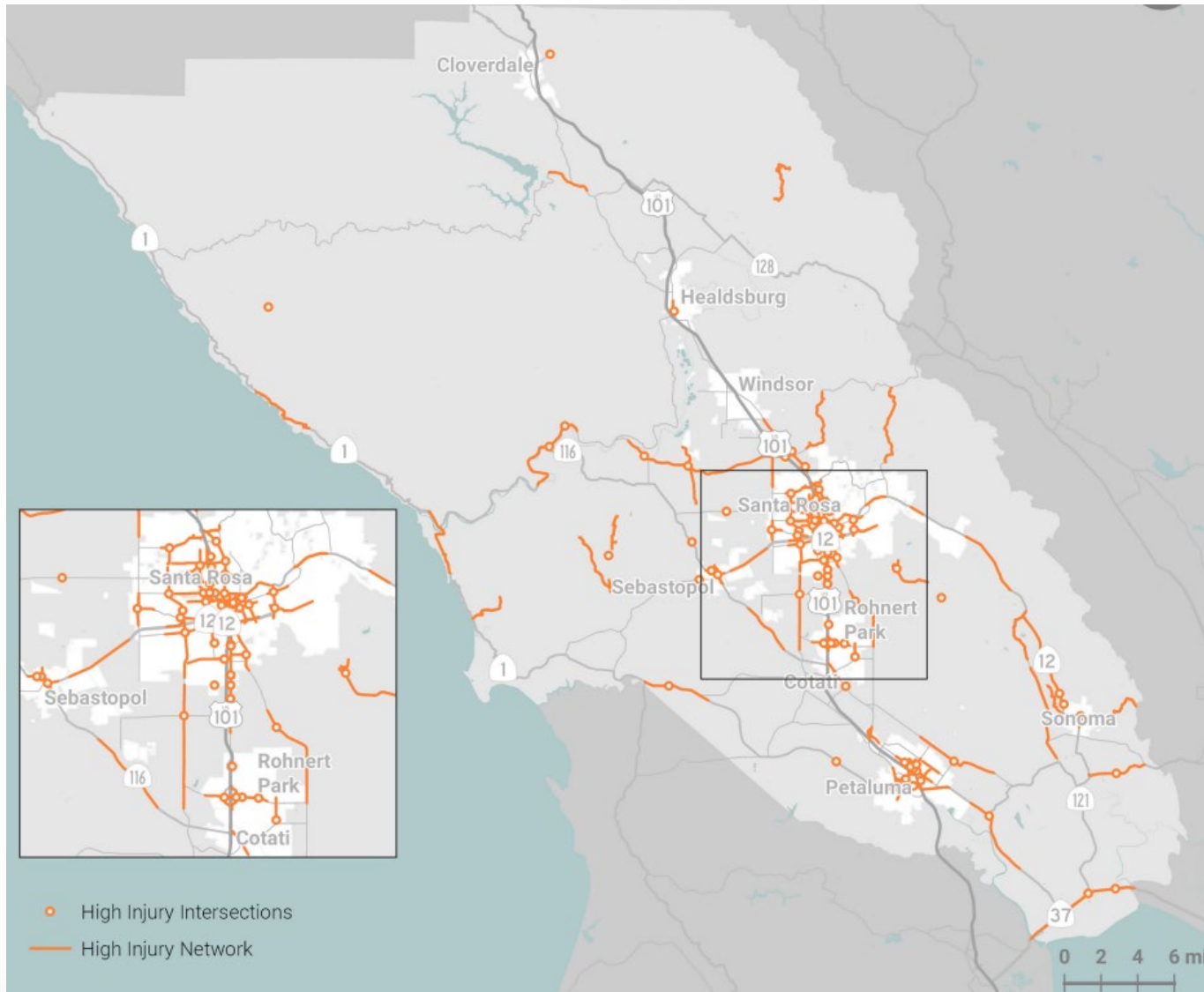
● 32 Vehicle to vehicle conflicts

■ 24 Vehicle to pedestrian conflicts

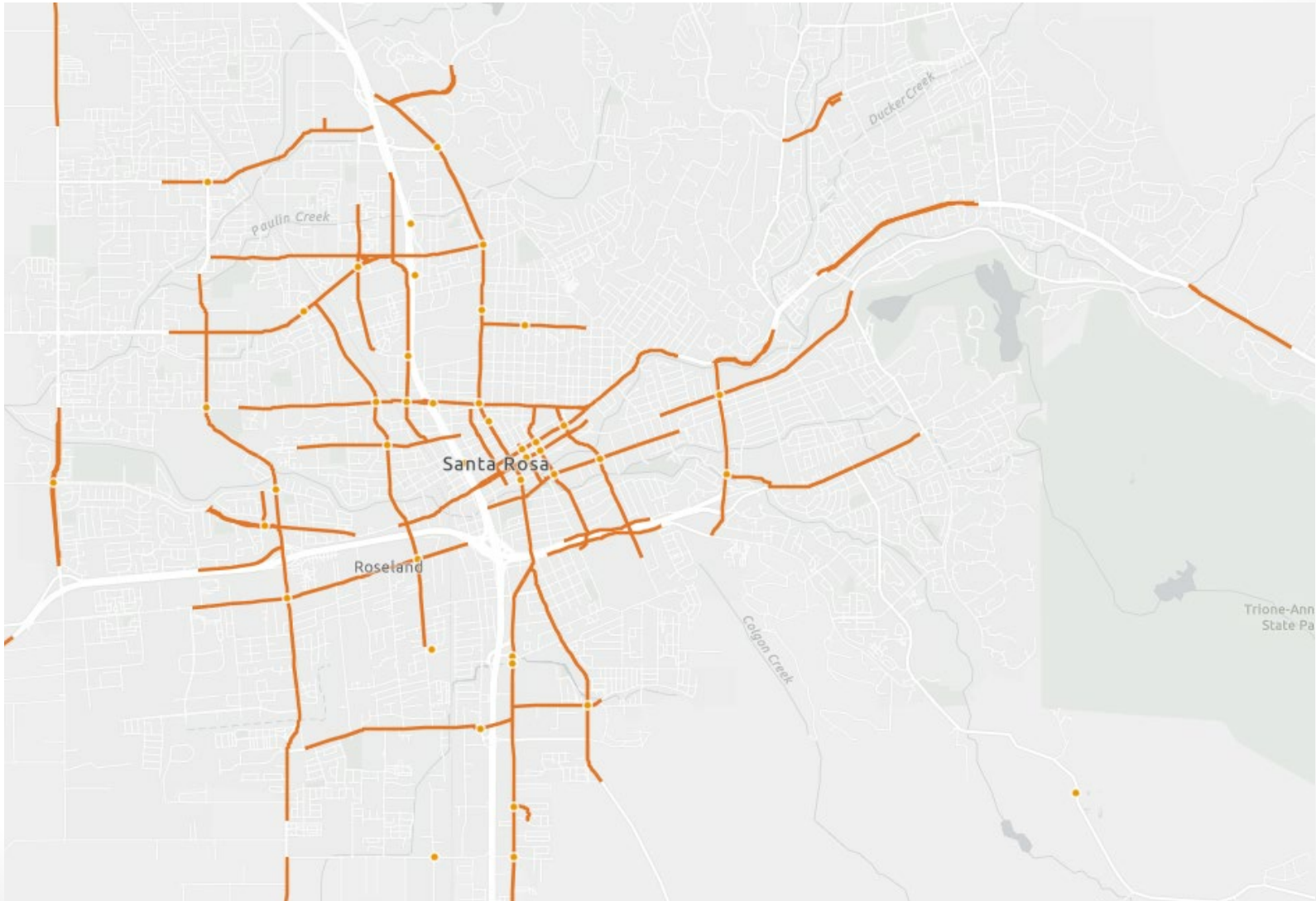
Data by Mode



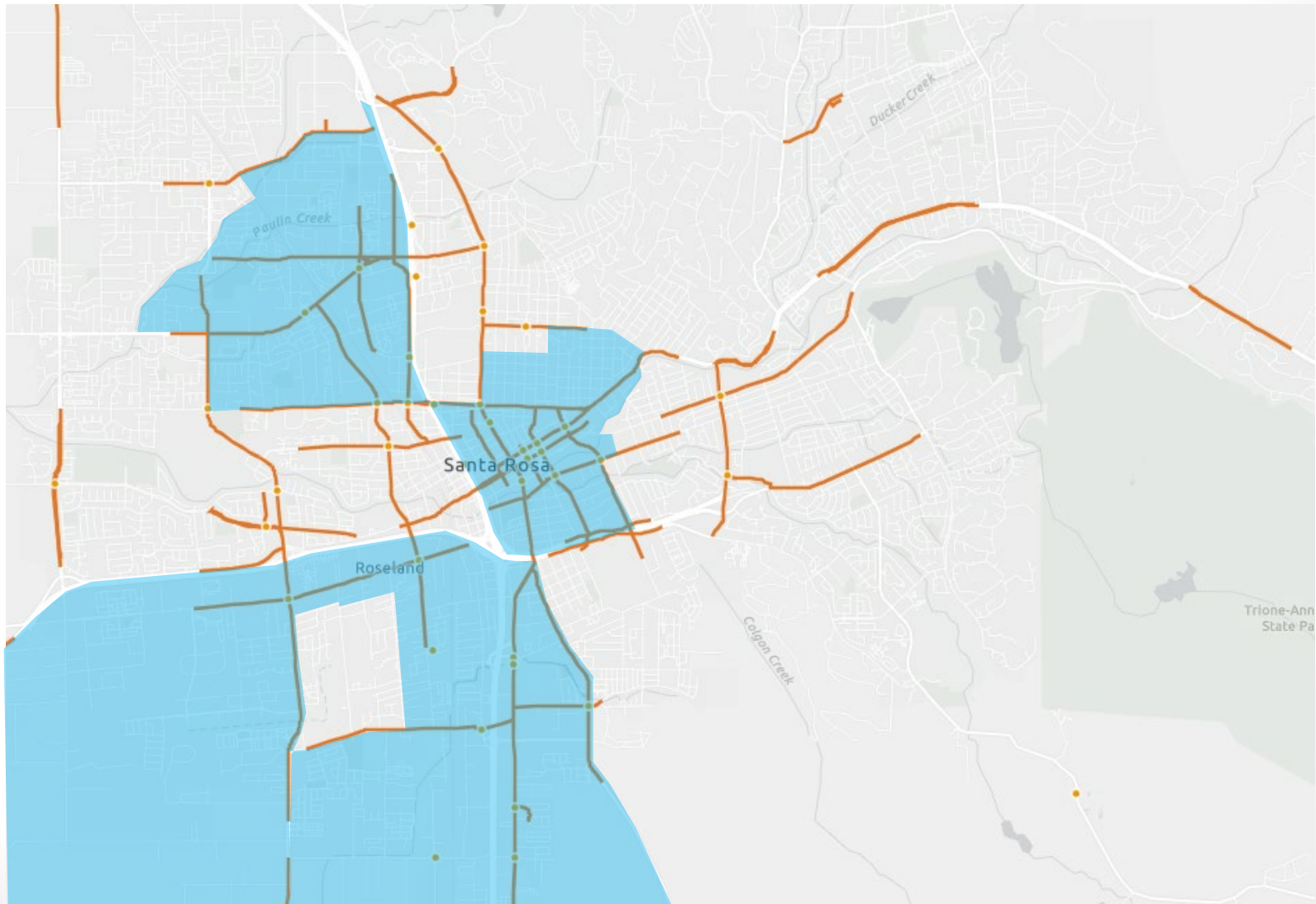
High-Injury Network (HIN)



High-Injury Network (HIN)



Equity & HIN



Equity Considerations

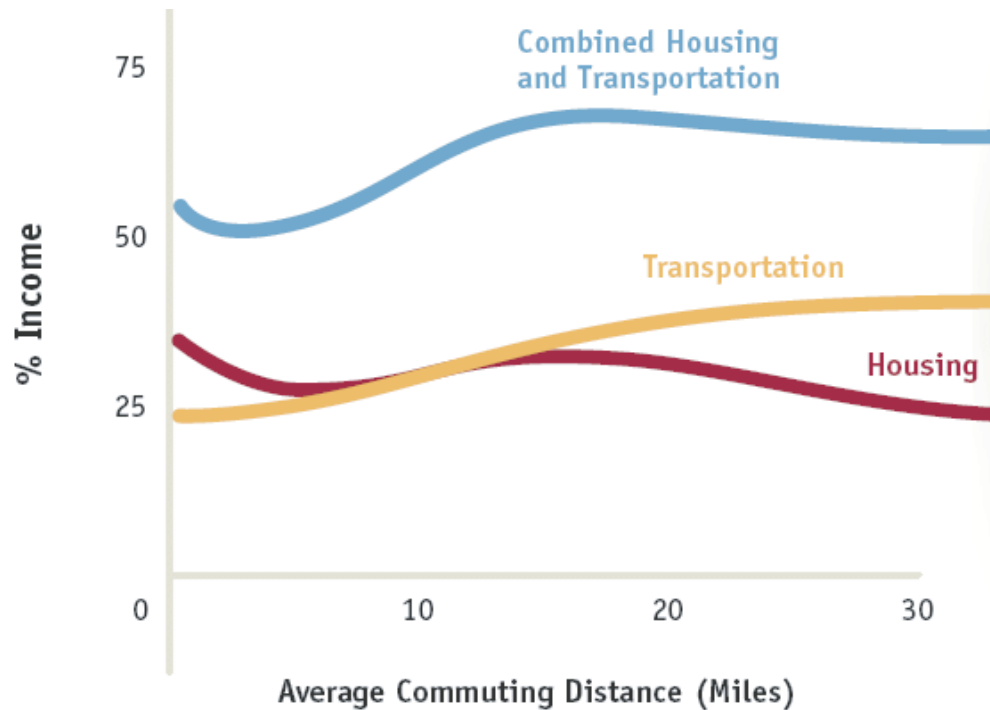


Figure 13: Racial Disparities among Children Killed while Walking

CHILDREN KILLED WHILE WALKING

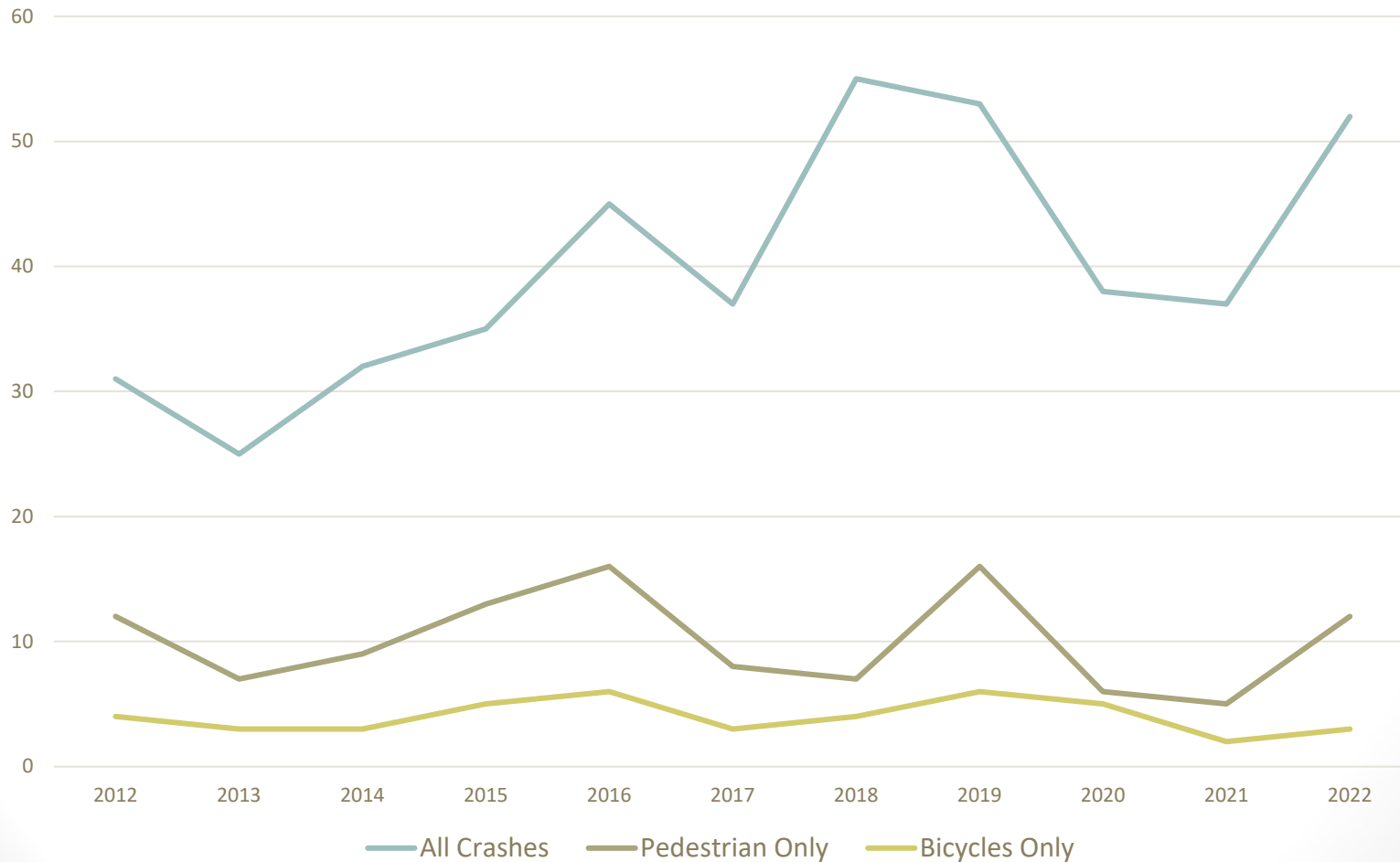
AFRICAN AMERICAN 2X AS LIKELY

LATINO 1.4X MORE LIKELY

WHITE

Santa Rosa Crash Statistics

Fatal + Serious Injury Crashes on Local Streets

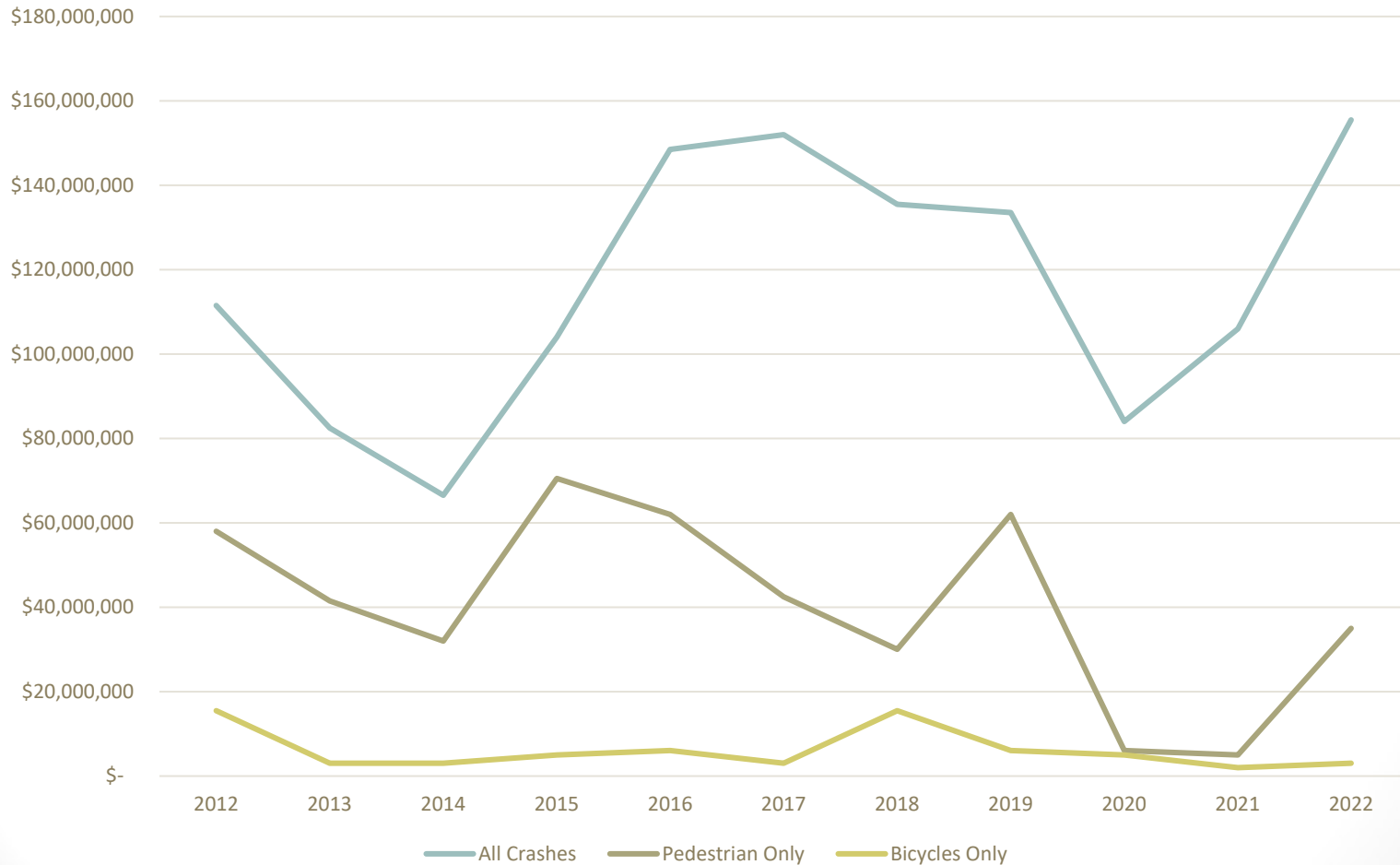


Crash Comprehensive Cost



Santa Rosa Crash Costs

Comprehensive Cost of Fatal + Serious Injury Crashes on Local Streets



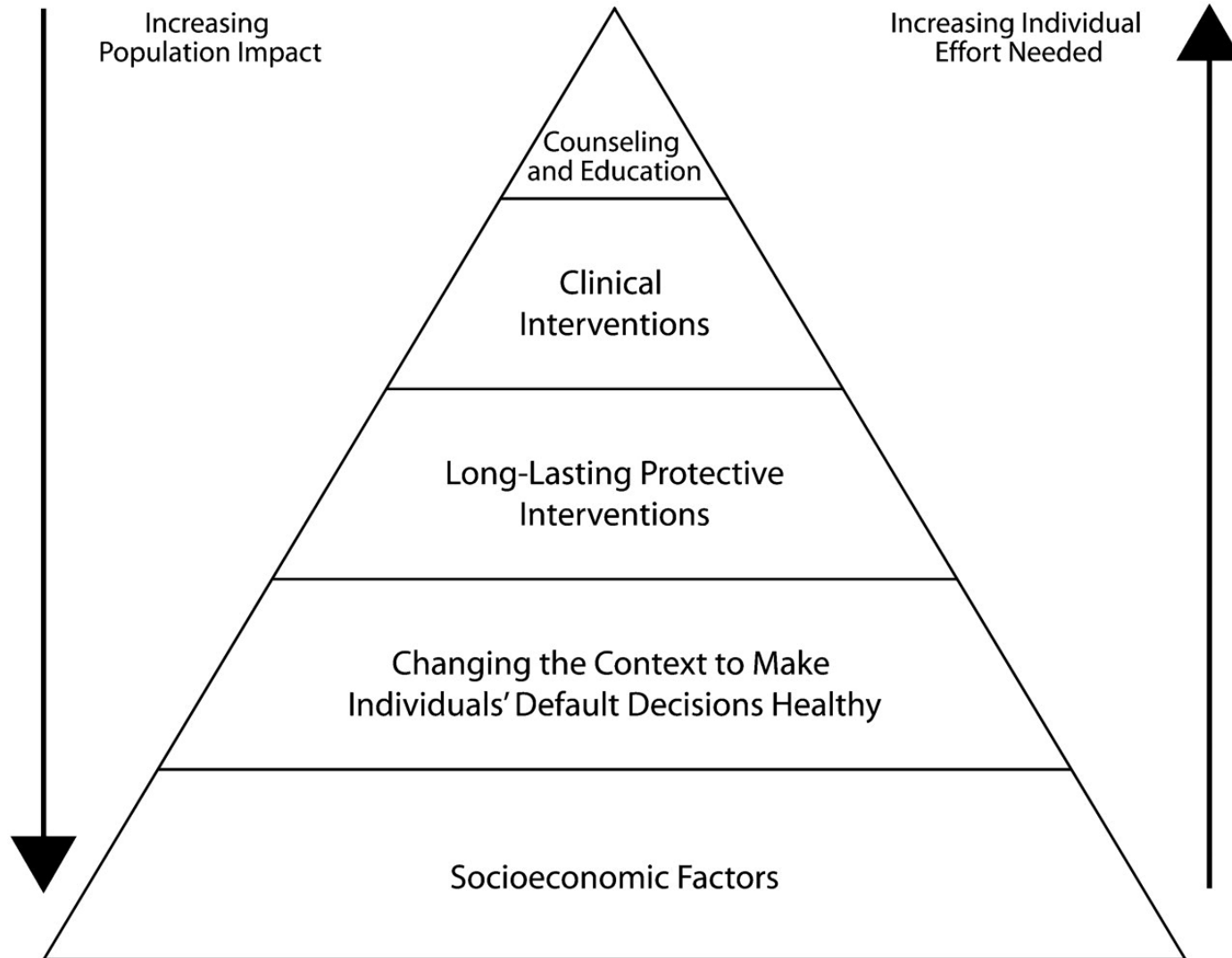
SCVZAP – Goals/Actions

- **Create Safer Speeds**
- Eliminate Impaired Driving
- **Create a Culture of Safety**
- **Build and Maintain Safe Streets for All**
- Make Vehicles Safer and **Reduce Private Vehicle Use**
- Improve Data for Effective Decision Making

Santa Rosa Vision Zero Implementation Plan (SRVZIP)

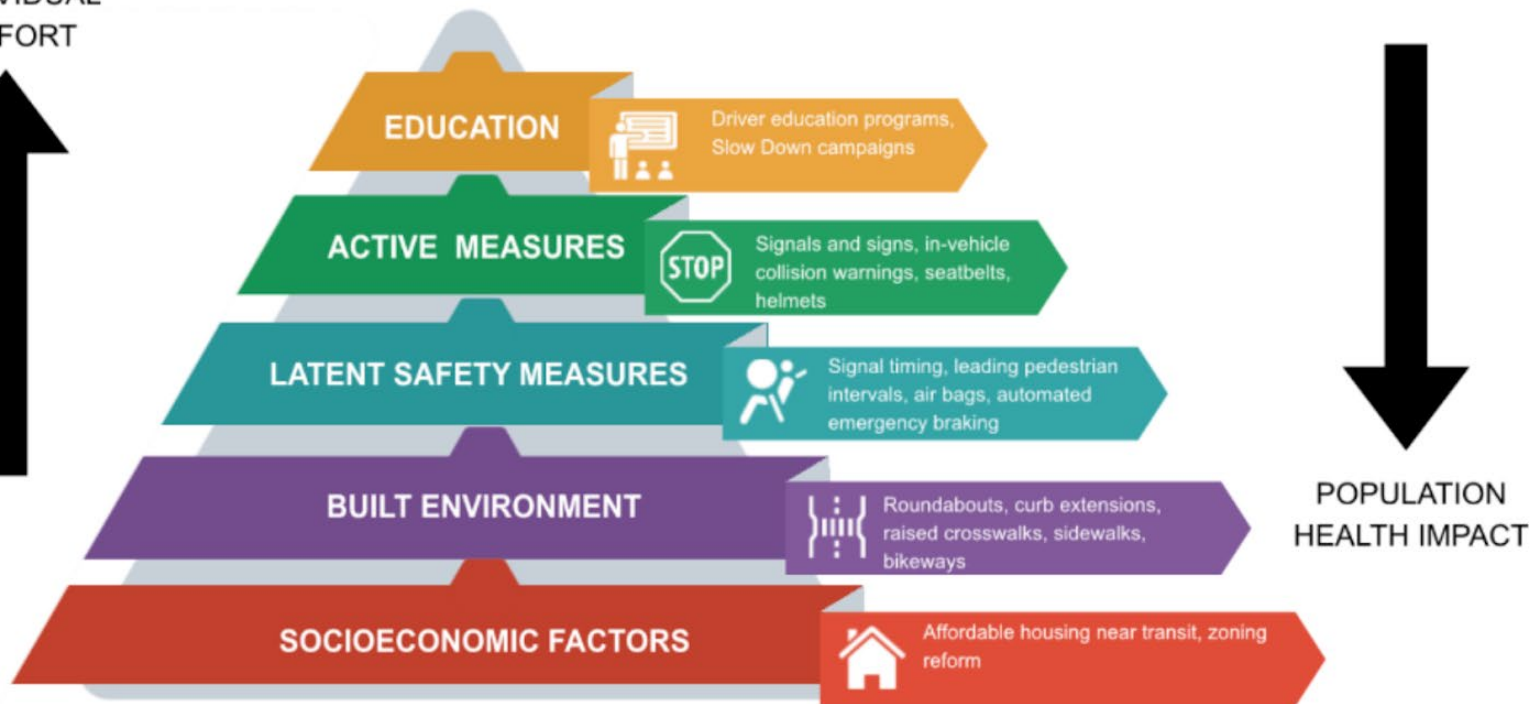
- Create Safer Speeds (5)
- Eliminate Impaired Driving (5)
- Create a Culture of Safety (6)
- Build and Maintain Safe Streets for All (20)
- Make Vehicles Safer and Reduce Private Vehicle Use (6)
- Improve Data for Effective Decision Making (5)

Safe Systems Pyramid



Safe Systems Pyramid

INDIVIDUAL
EFFORT



POPULATION
HEALTH IMPACT

Woman Fatally Hit by Vehicle in Downtown Santa Rosa

Pedestrian Struck and Killed in Accident in Santa Rosa

**Pedestrian Fatally Struck By Truck
In Santa Rosa's Cherry Road
Neighborhood**

**WOMAN FATALLY HIT BY TRUCK
WHILE CROSSING STREET IN SANTA
ROSA, POLICE SEEK WITNESSES**

**Woman struck, killed by vehicle near
downtown Santa Rosa**

**Woman fatally struck by
pickup truck in Santa Rosa**

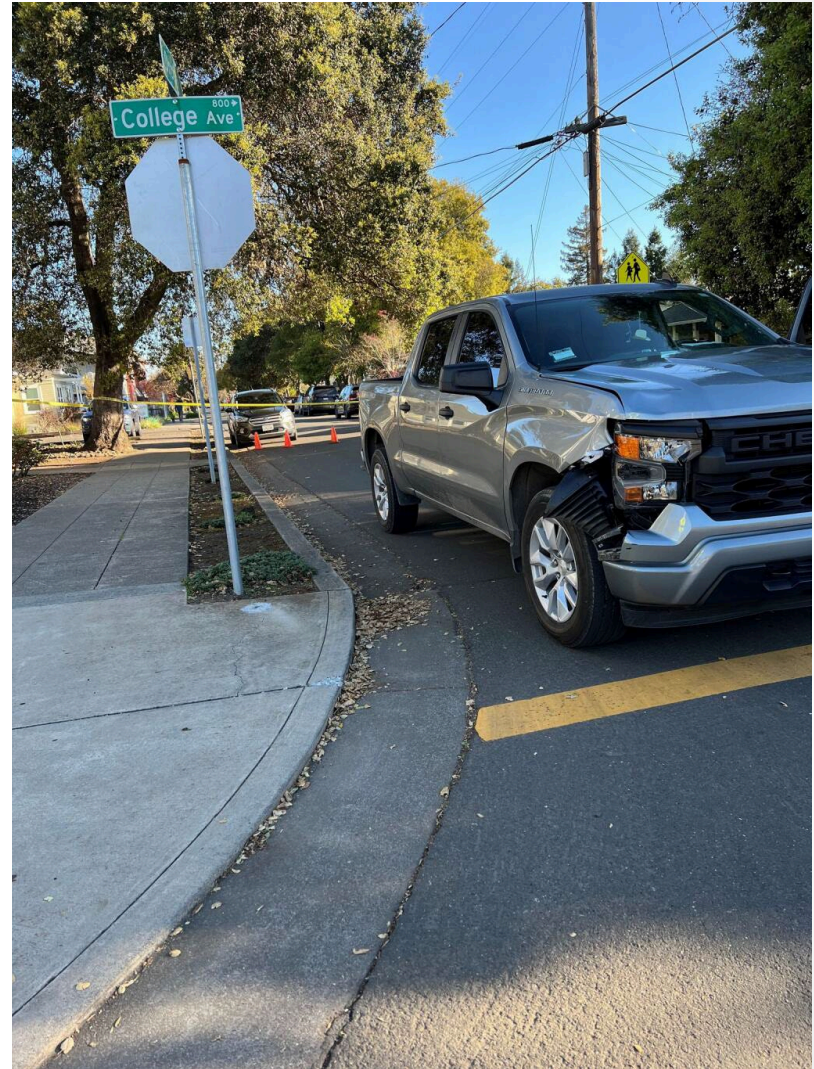
Woman Fatally Hit by Vehicle in Downtown Santa Rosa

Driver of the Chevy Silverado Remained At The Scene and Cooperated With Authorities

The driver of the pickup truck, a 21-year-old, remained at the scene and cooperated with investigators.

In response to the accident, responders temporarily closed the area to conduct an investigation. Santa Rosa police have ruled out speed as a factor in the incident. However, they have stated that they will provide further details as they become available.

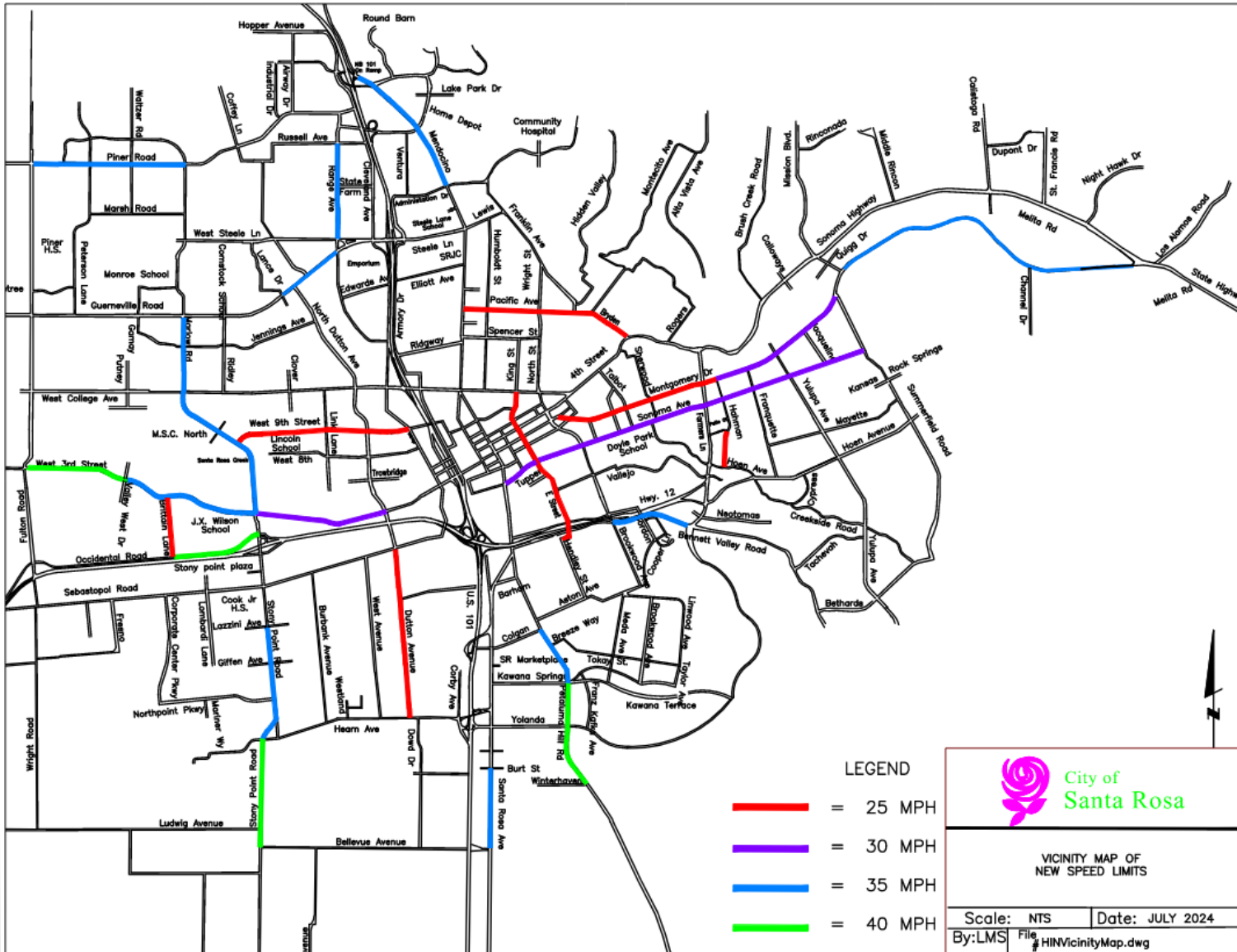
The community mourns the loss of this woman, and we extend our thoughts to her loved ones during this difficult time.



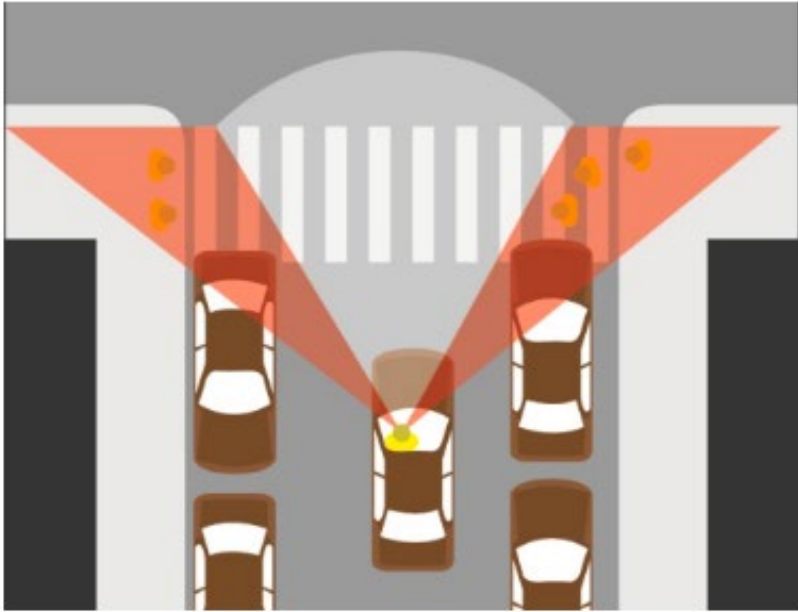
Current TPW Efforts

- Cleveland Avenue
- North Dutton Avenue
- Montgomery Village
- AB 43 Speed Limit Reductions
- AB 413 “Daylighting”
- SCTA Safe Streets and Roads for All (SS4A)

AB 43 Speed Limit Reductions

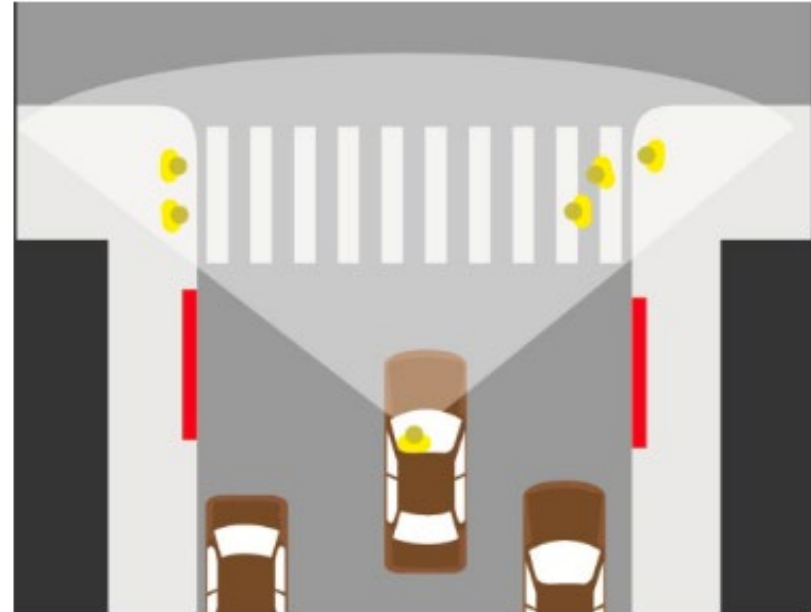


AB 413 Daylighting



Before daylighting: cars cannot see pedestrians in the crosswalk due to parked cars blocking the sightlines.

image courtesy of SFMTA



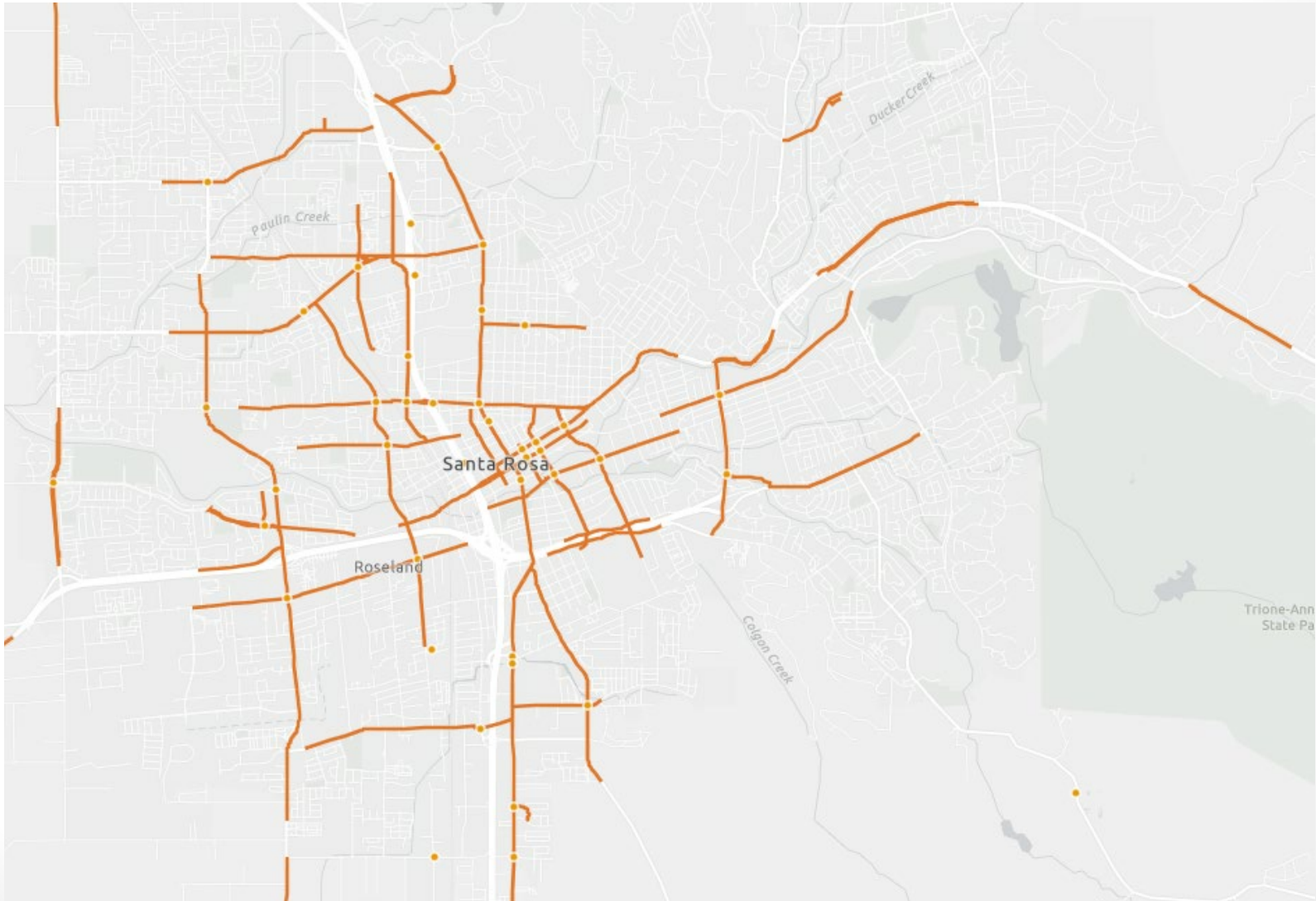
After daylighting: cars have a clear view to pedestrians before they step off the curb into the crosswalk.

image courtesy of SFMTA

SS4A Project Types

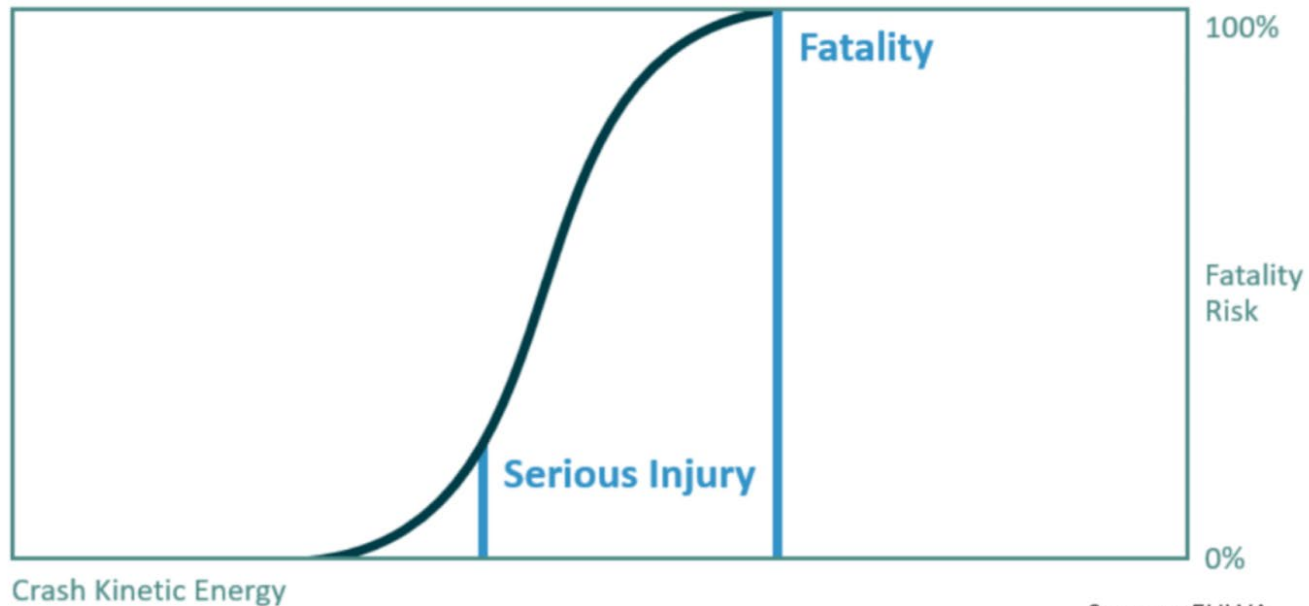


SS4A Project Locations



Energy Transfer

Energy is the most important “E”, but is not our focus.



Source: FHWA

Further Action

- Active Transportation Plan
- CIP Prioritization
- Street Design Standards
- Support for SCTA Application