

Martin Luther King Jr. Park and Trail Master Plan

City Council Meeting
February 10, 2025

Emily Ander, Assistant Parks Planner, TPW
Dave Rubin, Principal, Callander Associates

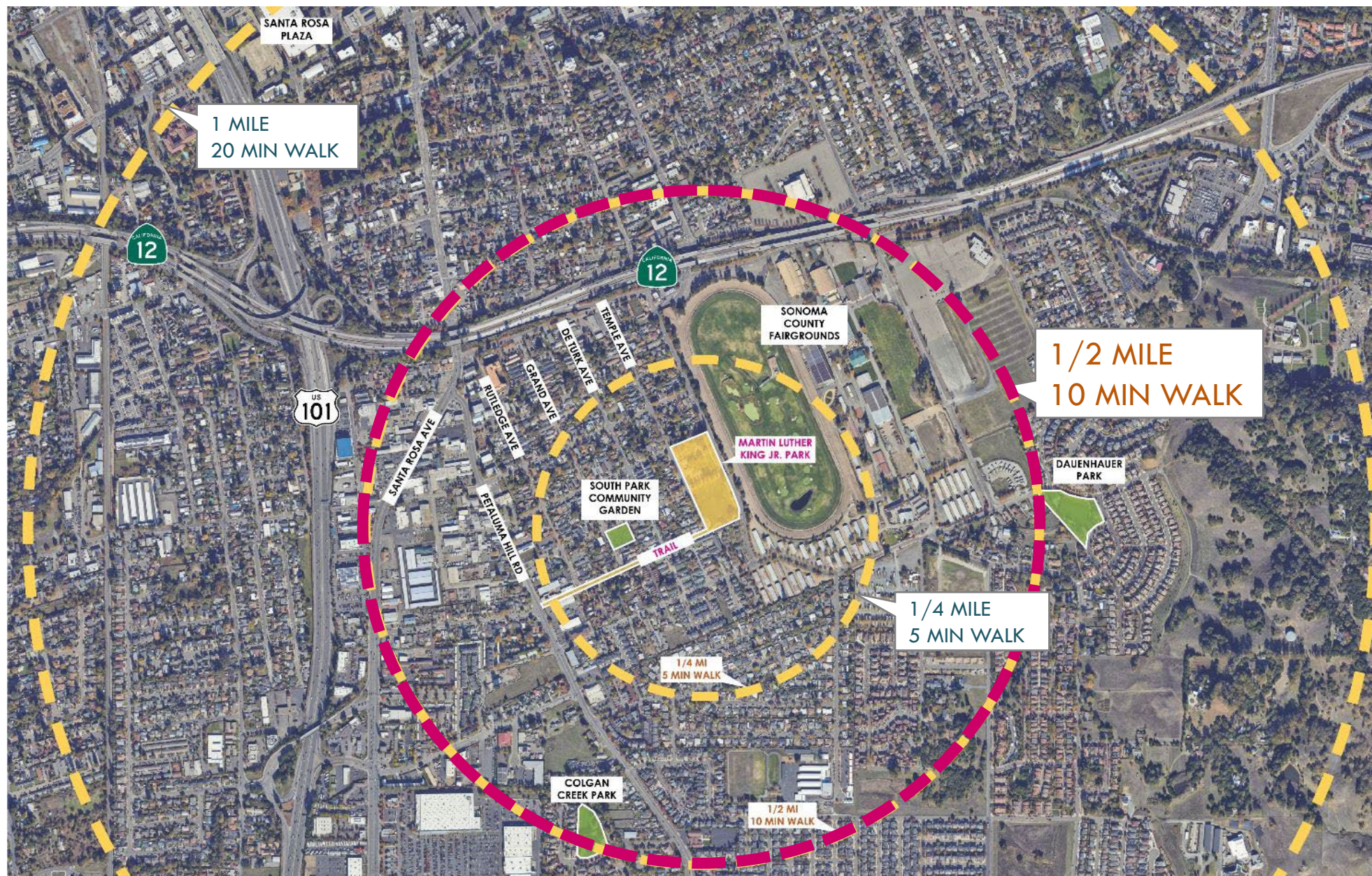


BACKGROUND

- One of the oldest parks - 1887
- Includes 1/4-mile pedestrian and bike trail
- Grant funding to help revitalize the park and trail
- Master planning - defines park improvements through community and stakeholder engagement

GOALS

- Balance needs of neighborhood & community
- Community driven amenities
- Space for events and gatherings
- Accommodate sports user groups
- Improve safety & park experience
- Meet funding requirements
- Integrate existing preschool





Open Lawn Areas



Playground



Picnic Areas



Existing Preschool



Basketball Court



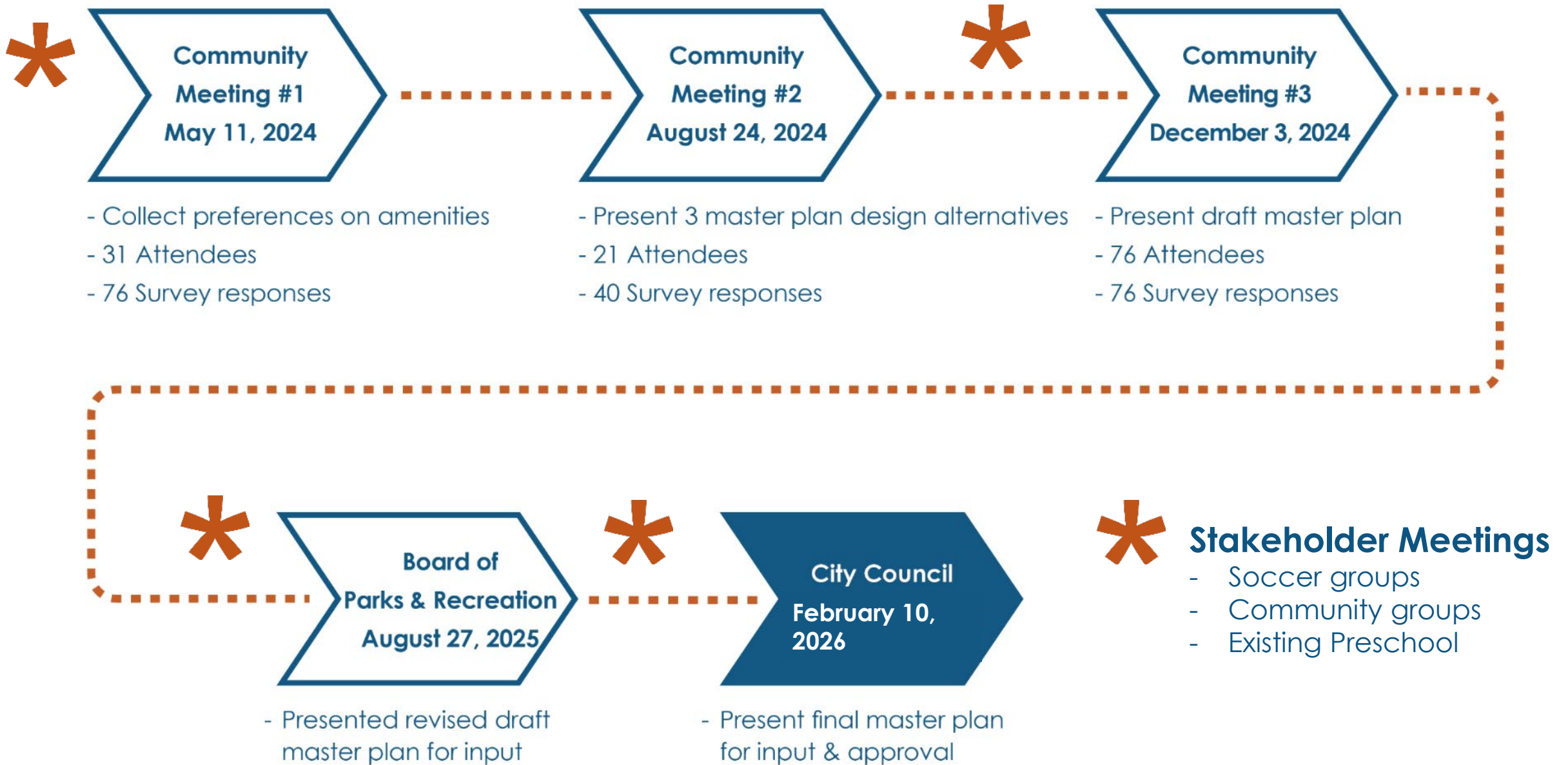
Restroom Building



Soccer Field



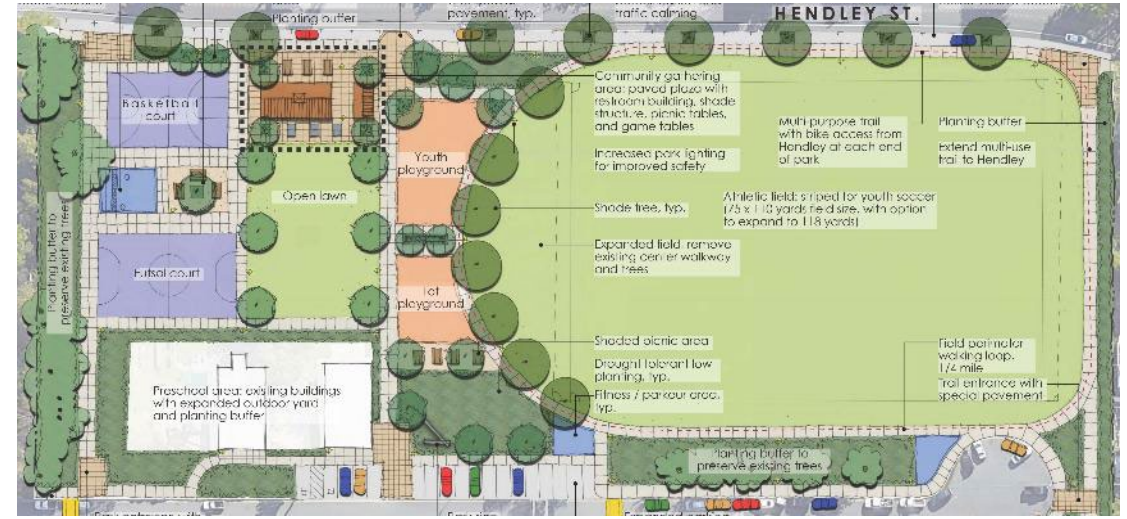
Trail to Petaluma Hill Road



ALTERNATIVE 1 – CENTRAL GREEN



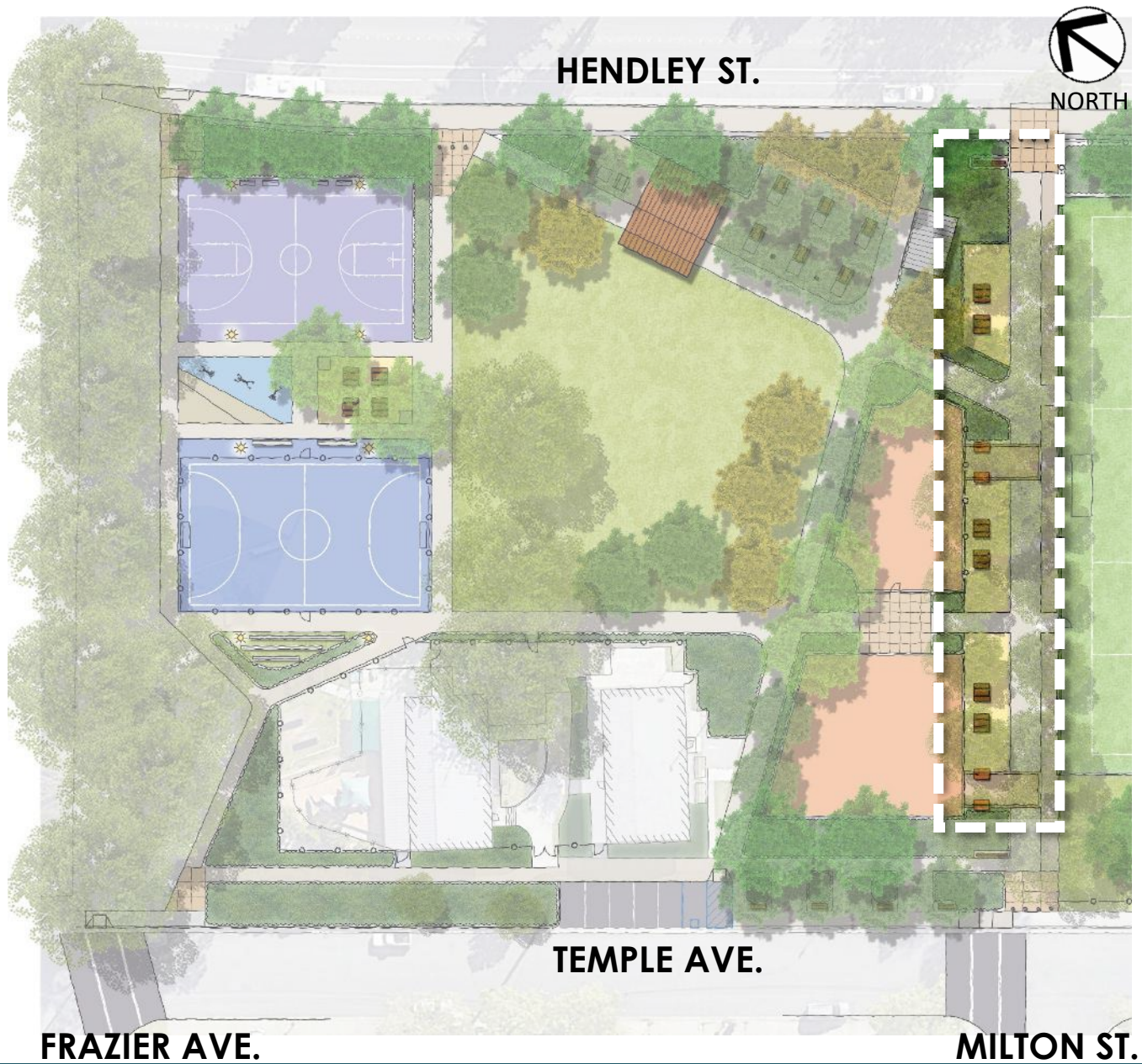
ALTERNATIVE 2 – EXPANDED FIELD



ALTERNATIVE 3 – CORNER CONNECTIONS

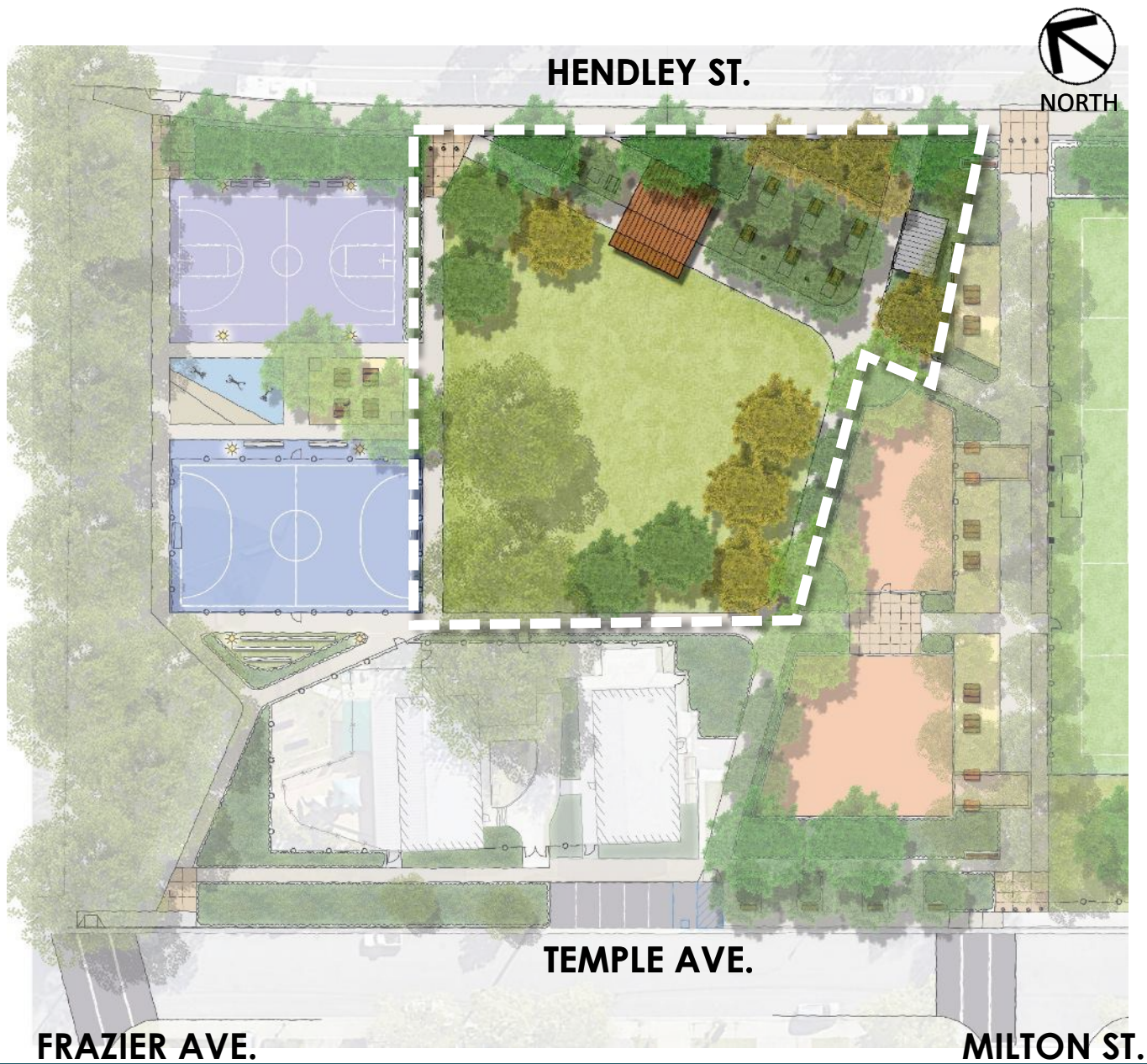




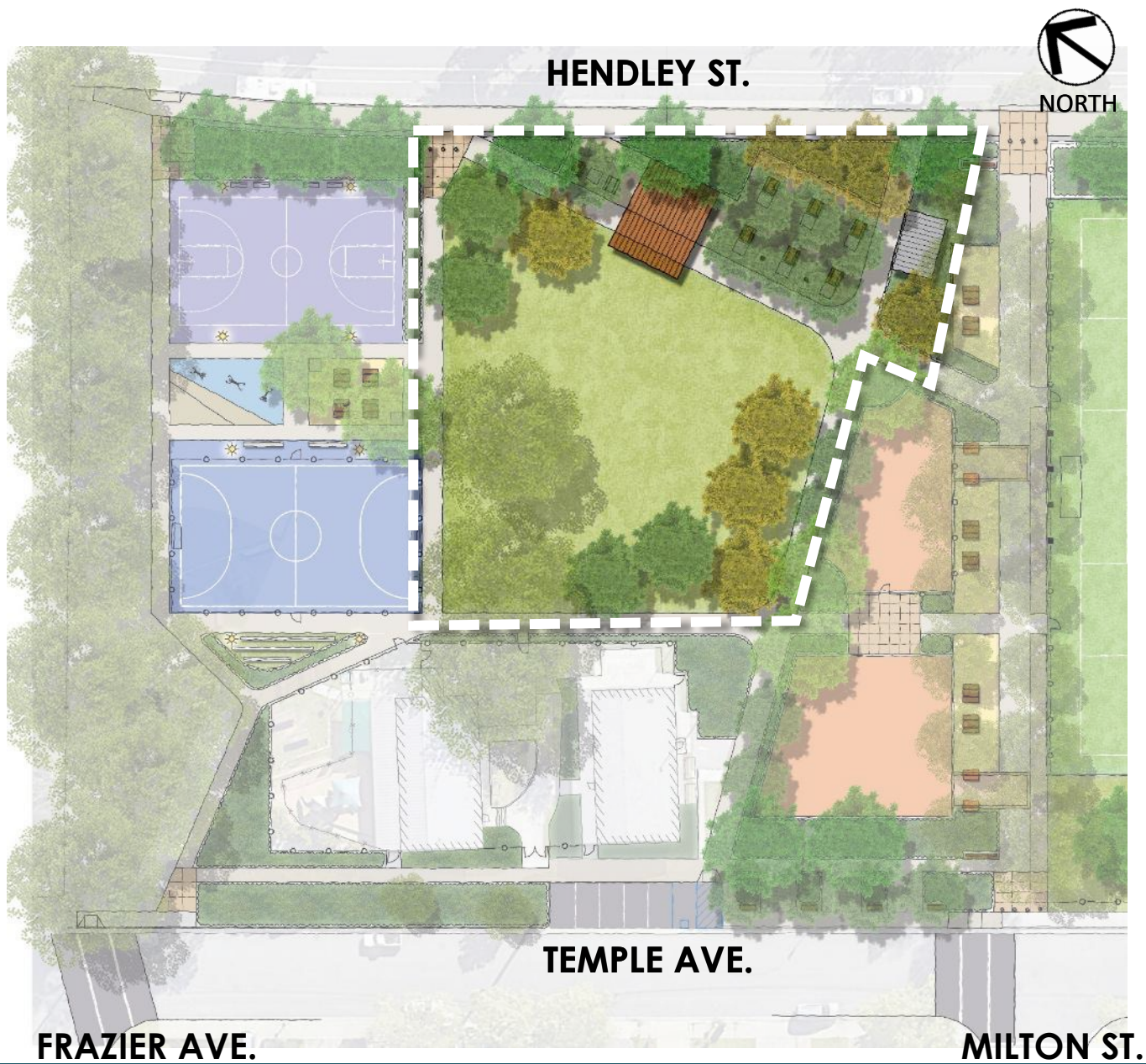






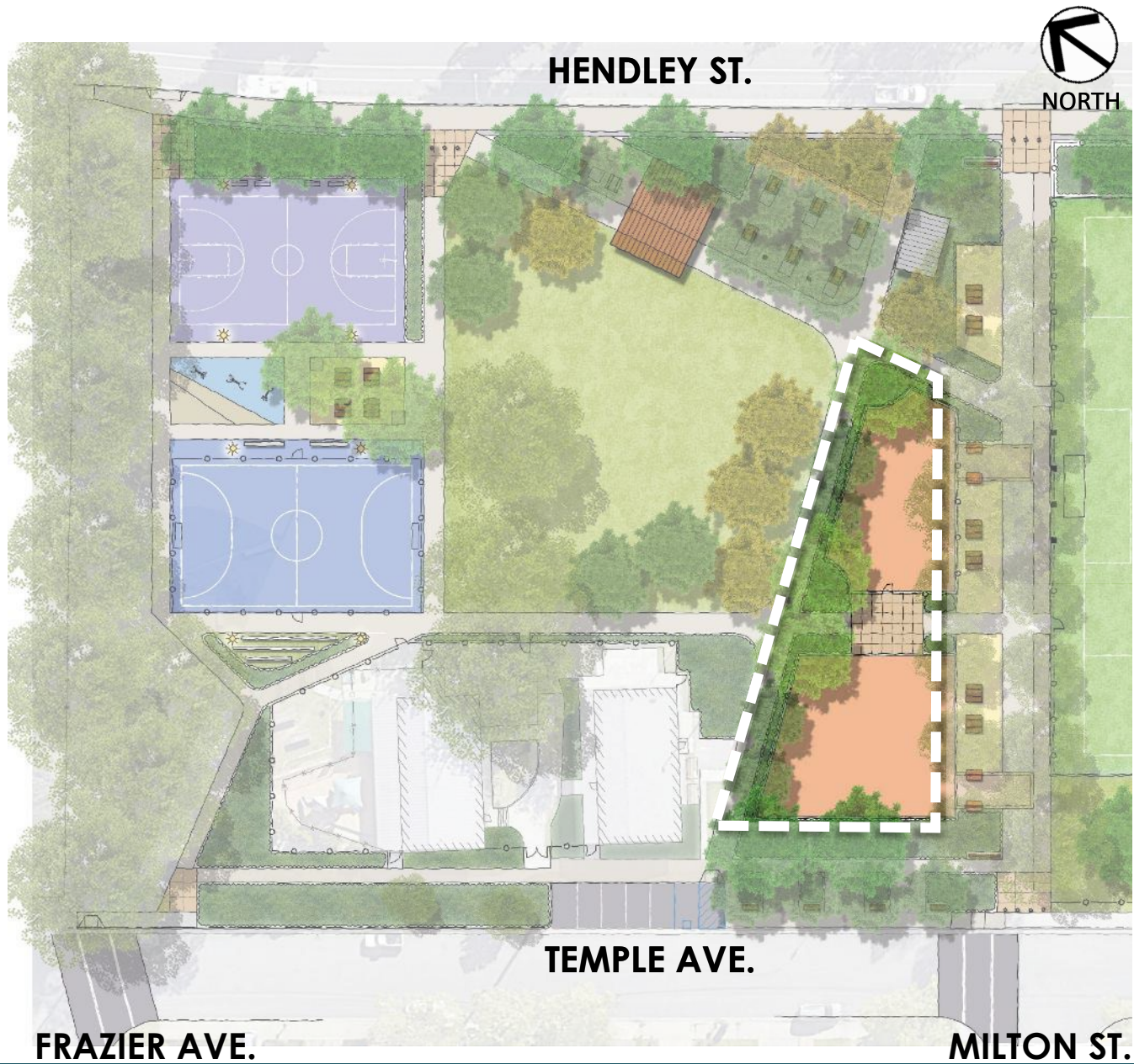


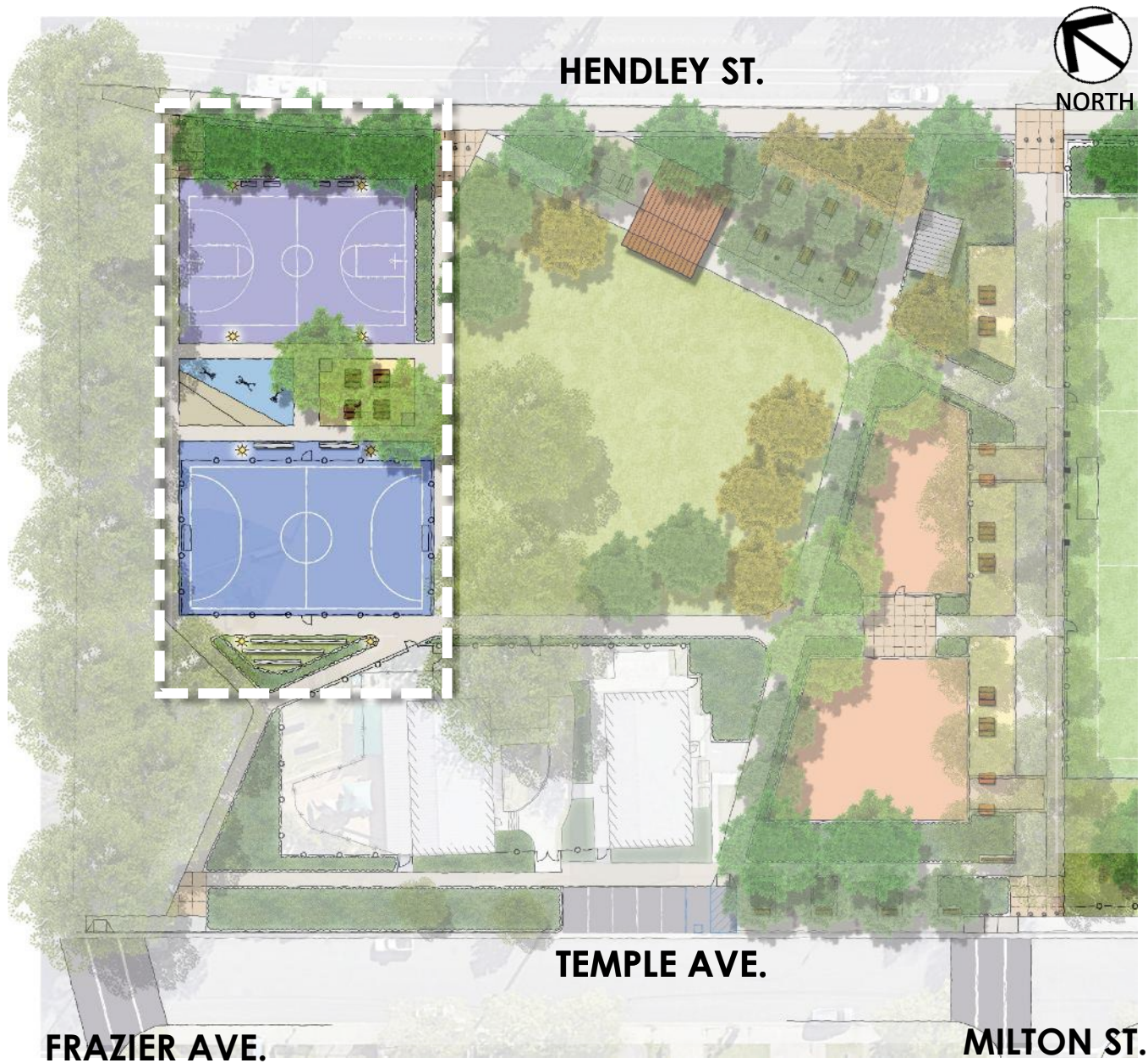
HEART OF THE PARK







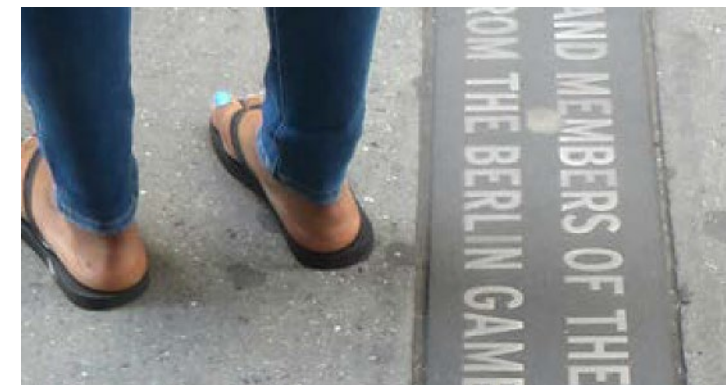
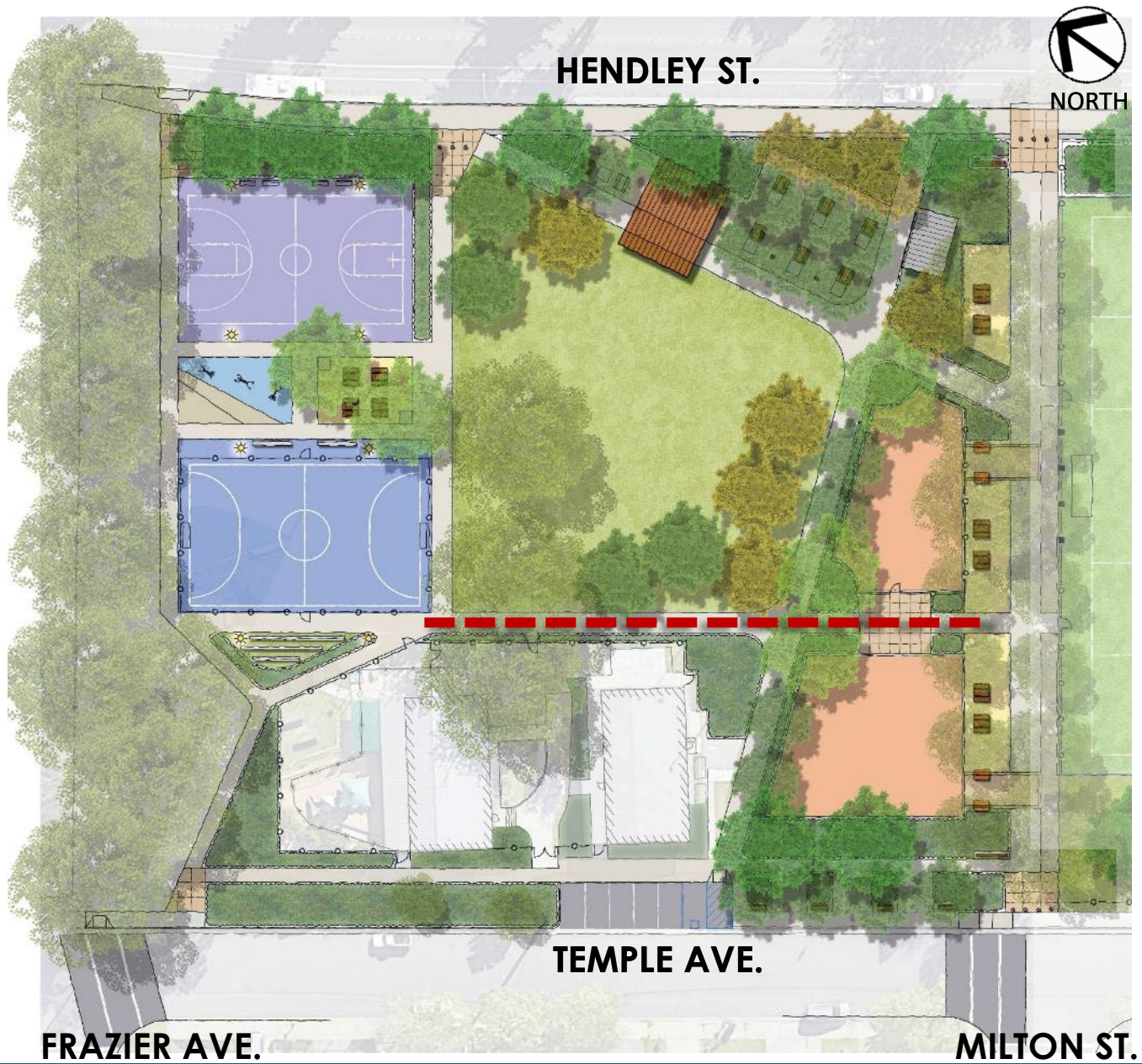






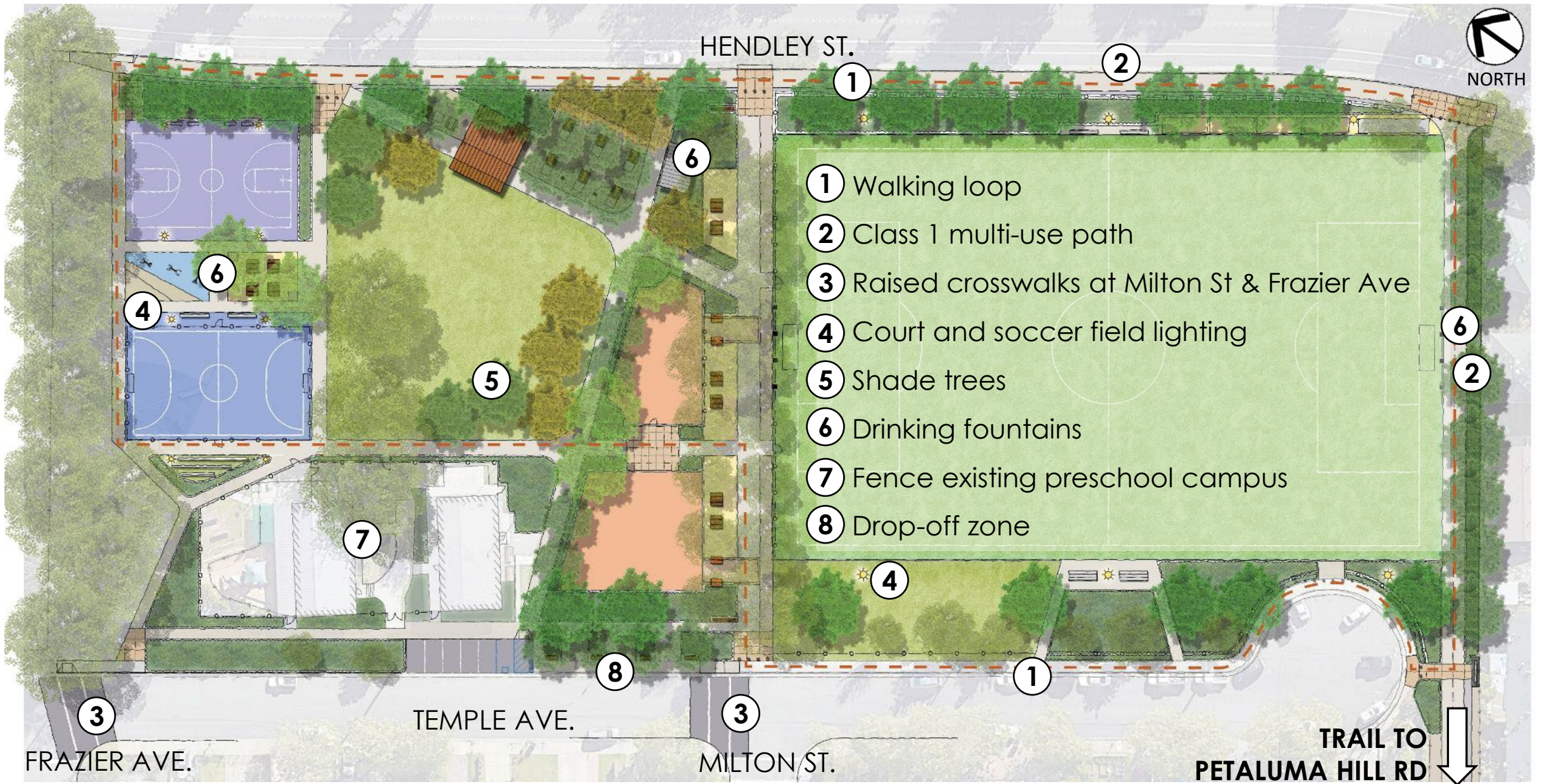


Proposed Improvements 18

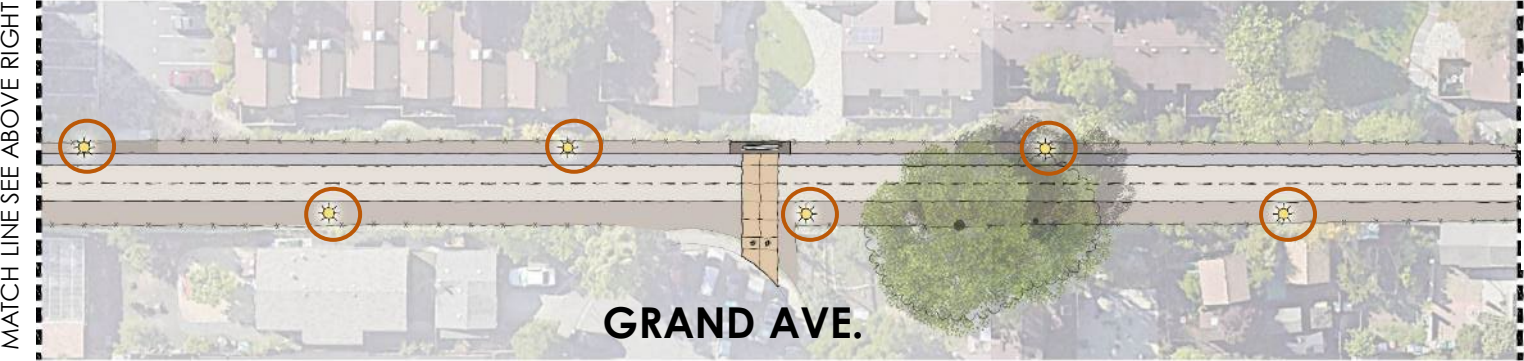
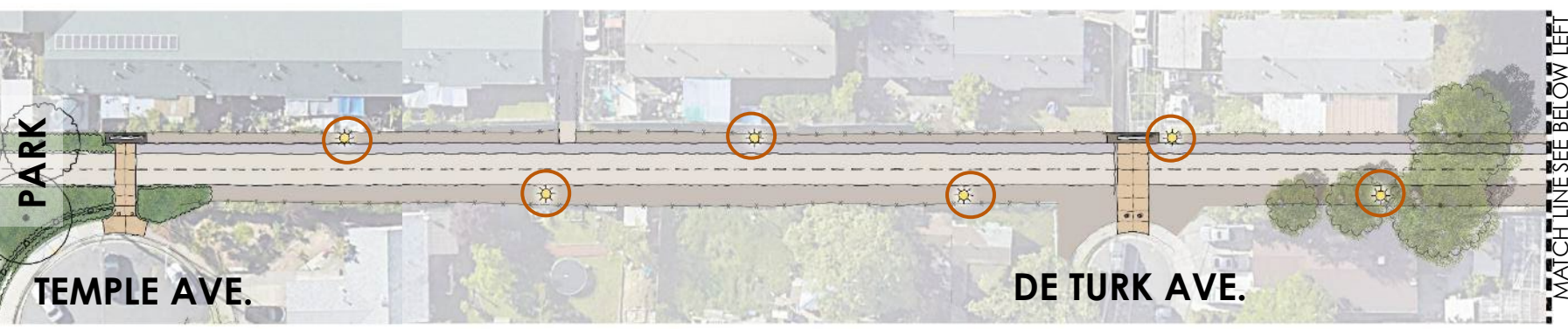




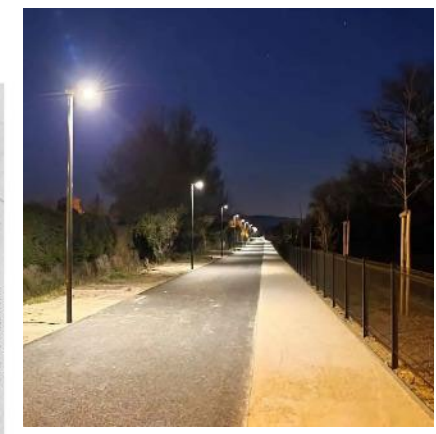
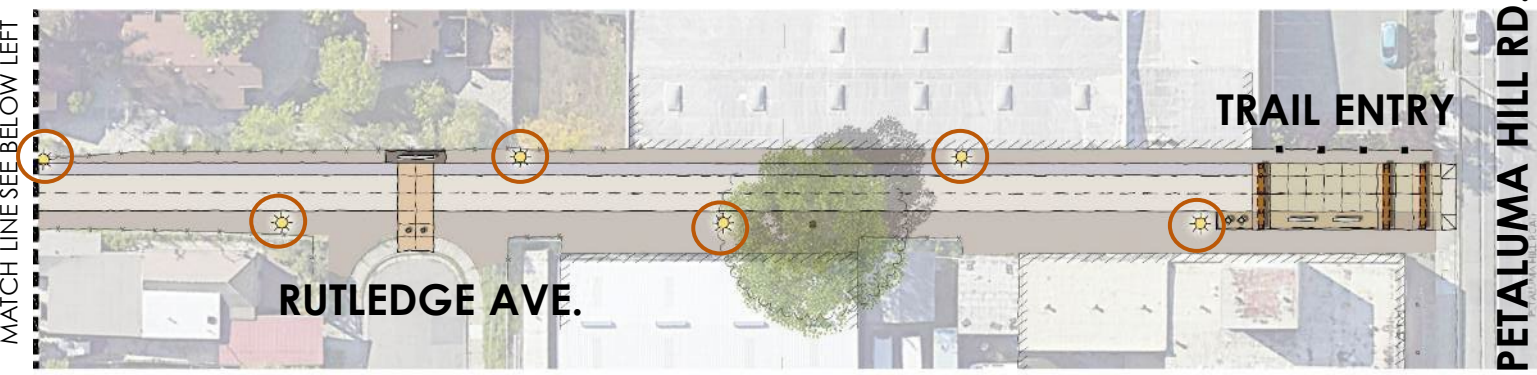
SYNTHETIC TURF SOCCER FIELD



OTHER AMENITIES



○ = lighting



MLK JR. PARK MASTER PLAN – TRAIL



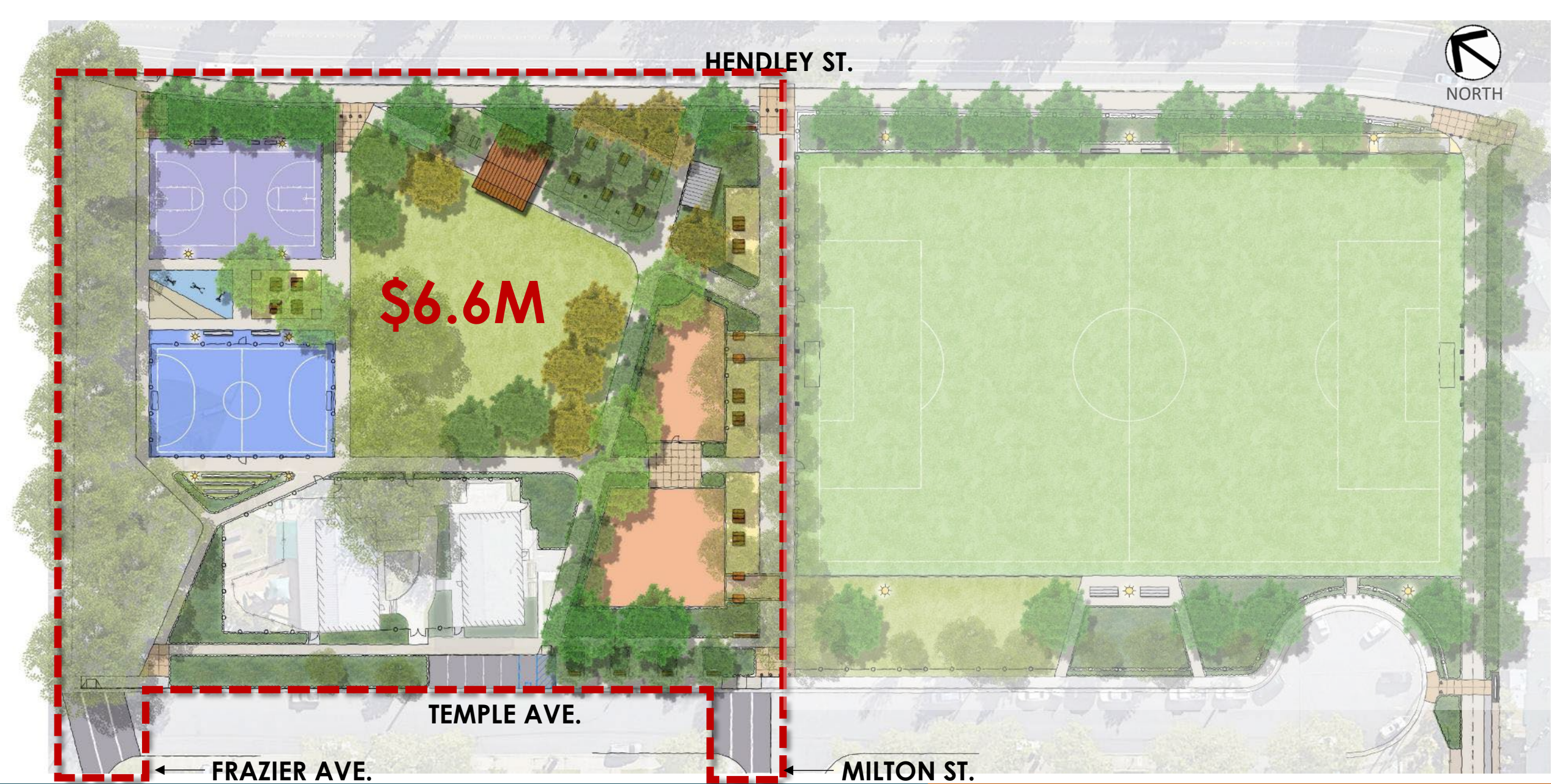


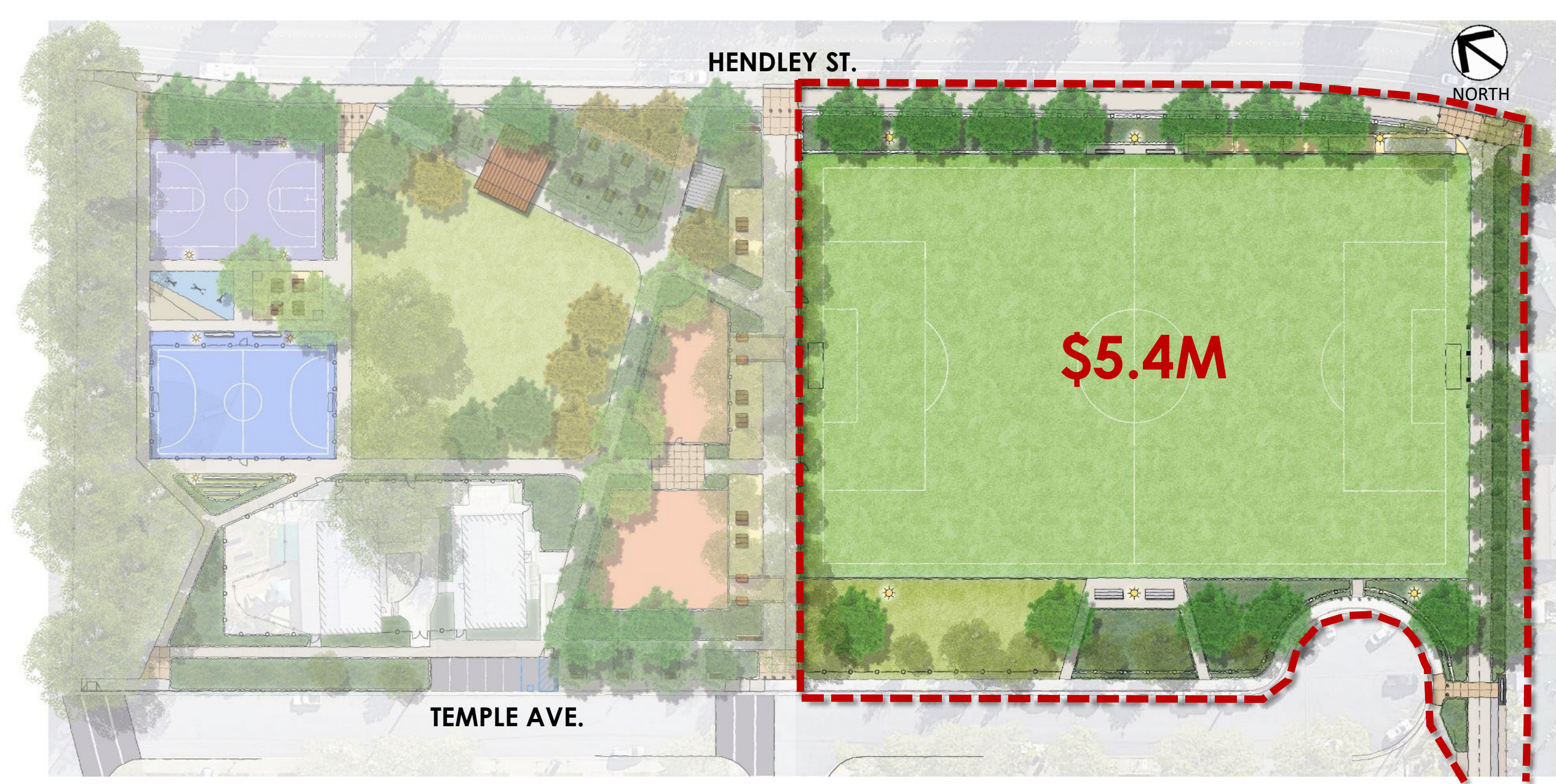
Proposed Improvements 24

Categorical Exemptions

- Class 1: Existing Facilities
- Class 2: Replacement and Reconstruction
- Class 3: New Construction or Conversion of Small Structures
- Class 4: Minor Alternations to Land
- Class 11: Accessory Structures







- Master plan was unanimously approved
- Recommend improving the north side of the park before the south side if construction is phased



It is recommended by the Board of Parks and Recreation and the Transportation and Public Works Department, that Council conduct a public hearing, and thereafter by resolution, adopt the Master Plan Amendment for Martin Luther King Jr. Neighborhood Park and the multi-use trail connecting Hendley Street to Petaluma Hill Road.

