

# DESIGN REVIEW SITE IMPROVEMENT DRAWINGS FOR

# DETURK WINERY VILLAGE APARTMENTS

## IN THE CITY OF SANTA ROSA

## 8 WEST 9TH STREET & 806 DONAHUE STREET

APN 010-091-001 & 007

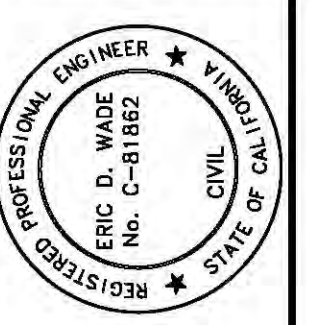
OCTOBER 2016

OWNER: RAILROAD SQUARE VILLAGE, LLC  
PO BOX 706  
TIBURON, CA 94920  
PH: (707) 310-2291

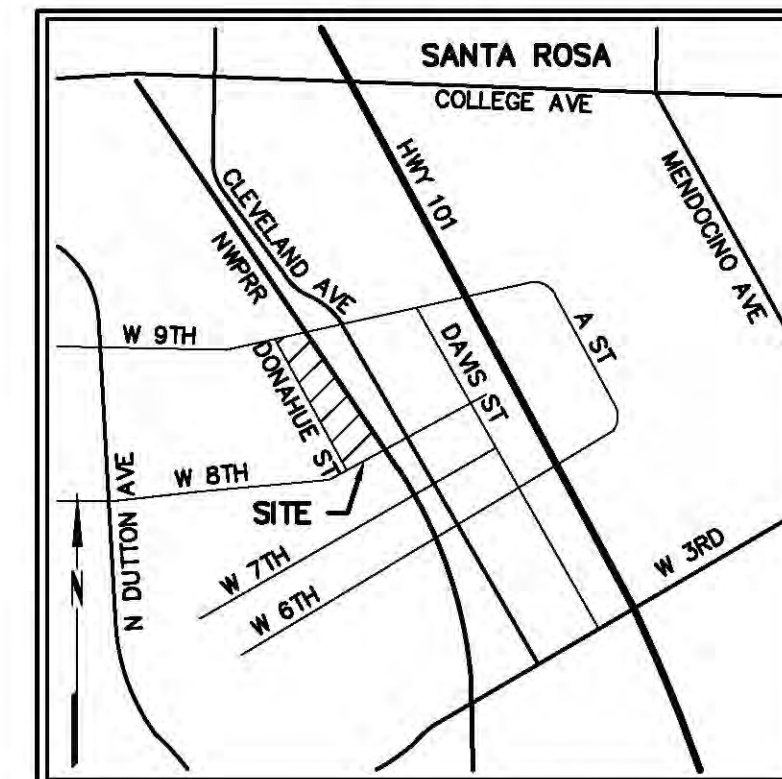
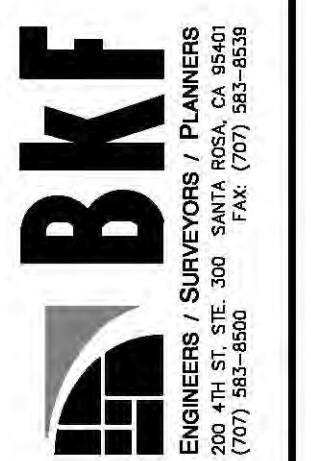
CIVIL ENGINEER: BKF ENGINEERS  
200 4TH STREET, SUITE 300  
SANTA ROSA, CA, 95401  
PH: 583-8500  
FAX: 583-8539

ARCHITECT: O'MALLEY WILSON WESTPHAL  
555 FIFTH STREET, SUITE 200  
SANTA ROSA, CA 95401  
PH: (707) 636-0828  
FAX: (707) 636-0829

LANDSCAPE ARCHITECT: IMAGINE SONOMA  
801 CAMELIA STREET, SUITE E  
BERKELEY, CA 94710  
PH: (510) 926-2600



**PRELIMINARY**  
NOT FOR CONSTRUCTION  
DATE: 10/12/2016  
ERIC D. WADE  
C-81862



VICINITY MAP  
NOT TO SCALE

**INDEX OF DRAWINGS**

1. PROJECT INFORMATION
2. GRADING AND UTILITY PLAN
3. STRIPING PLAN

**SYMBOLS & LEGEND**

EXISTING	PROPOSED	
		IRON PIPE
		CENTERLINE MONUMENT BLOW OFF
		GATE VALVE BACKFLOW PREVENTION DEVICE
		FIRE DEPARTMENT CONNECTION FIRE HYDRANT
		LIGHT POLE
		UTILITY POLE
		GUY ANCHOR
		CATCH BASIN
		DROP INLET MANHOLE
		CLEANOUT/RODDING INLET
		TREE
		TREE TO BE REMOVED
		PROPERTY LINE
		CENTERLINE
		GRADE BREAK
		FLOW LINE
		FENCE
		RETAINING WALL
		FACE OF CURB
		SANITARY SEWER
		STORM DRAIN
		WATER
		OVERHEAD UTILITY LINE
		ASPHALT
		POROUS ASPHALT
		BIORETENTION/VOLUME CAPTURE
		CONCRETE
		VALLEY GUTTER
		INVERT AT CLEANOUT
		KEYNOTE
		DETAIL IDENTIFICATION SHEET WHERE DETAIL IS SHOWN
		CROSS SECTION IDENTIFICATION SHEET WHERE CROSS SECTION IS SHOWN

**ABBREVIATIONS**

±	MORE OR LESS	MH	MANHOLE
AC	ASPHALT CONCRETE	MIN	MINIMUM
APN	ASSESSOR'S PARCEL NUMBER	MON	MONUMENT
BLRD	BOLLARD	OH	OVERHEAD
BLDG	BUILDING	PCC	PORTLAND CEMENT CONCRETE
BM	BENCHMARK	PL	PROPERTY LINE
CB	CATCH BASIN	PTC	PROJECTED TOP OF CURB
CL	CENTERLINE	ROW	RIGHT OF WAY
CO	CLEAN OUT	S	SLOPE
CONC	CONCRETE	SD	STORM DRAIN
DI	DROP INLET	SDCB	STORM DRAIN CATCH BASIN
ELEC	ELECTRIC	SDMH	STORM DRAIN MANHOLE
ELEV	ELEVATION	SSE	SANITARY SEWER EASEMENT
EX	EXISTING	SSCO	SANITARY SEWER CLEAN OUT
FF	FINISHED FLOOR	SSMH	SANITARY SEWER MANHOLE
FG	FINISHED GRADE	SWE	SIDEWALK EASEMENT
FH	FIRE HYDRANT	TB	TOP OF BOX
FL	SURFACE FLOWLINE	TC	TOP FACE OF CURB
FND	FOUND	TG	TOP OF GRATE
GI	GRATE INLET	TYP	TYPICAL
INV	INVERT - BOTTOM INSIDE OF PIPE	W	WATER
IP	IRON PIPE		
MAX	MAXIMUM		

**DESIGN REVIEW NOTES:**

THIS CONCEPTUAL SITE PLAN HAS BEEN PREPARED TO PROVIDE THE REVIEWING AGENCY WITH A DRAWING REFLECTING THE PARCEL'S EXISTING CONDITION AND THE PROPOSED CONCEPTUAL LAYOUT. MINOR ADJUSTMENTS MAY BE MADE DURING THE DEVELOPMENT OF THE CONSTRUCTION DRAWINGS TO FACILITATE THE REQUESTS OF CITY STAFF, THE BUILDING CODE AND LOCAL REGULATIONS.

BUILDING SPRINKLERS WILL BE REQUIRED WITH THIS DEVELOPMENT. THESE FACILITIES WILL BE LOCATED AND SIZED IN ACCORDANCE WITH THE BUILDING CODE, APPLICABLE COUNTY/CITY STANDARDS AND LOCAL REGULATIONS WITH THE DEVELOPMENT OF CONSTRUCTION DRAWINGS.

THE PROFESSIONAL PREPARING THESE DRAWINGS WILL NOT BE RESPONSIBLE FOR, OR LIABLE FOR, UNAUTHORIZED CHANGES TO OR USES OF THESE DRAWINGS. CHANGES TO THESE DRAWINGS MUST BE REQUESTED IN WRITING AND MUST BE APPROVED BY THE DESIGN PROFESSIONAL.

TOPOGRAPHIC INFORMATION SHOWN HERE ON WAS OBTAINED FROM A FIELD SURVEY BY CINQUINI & PASSARINO, INC.

THE LOCATIONS OF EXISTING UNDERGROUND FACILITIES SHOWN ON THESE DRAWINGS ARE APPROXIMATE AND ARE BASED ON OBSERVED TOPOGRAPHIC SURFACE FEATURES AND AVAILABLE INFORMATION. THE PROFESSIONAL PREPARING THESE DRAWINGS ASSUMES NO RESPONSIBILITY FOR THE ACCURACY OF THESE FACILITIES OR FOR THE INADVERTENT OMISSION OF RELATED INFORMATION.

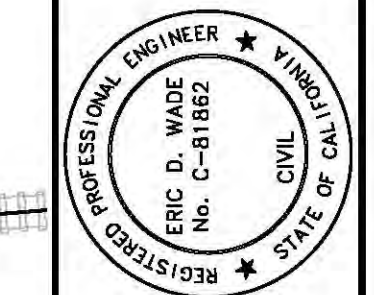
BOUNDARY INFORMATION SHOWN HEREON DOES NOT CONSTITUTE A FORMAL BOUNDARY DETERMINATION.

BENCHMARK: WEST SEVENTH ST., AT NMPRR: TOP OF NW BOLT ON CONCRETE BASE FOR WIGWAG SIGNAL, IN SW CORNER. ELEVATION 151.754 BM A70, NAVD 1929.

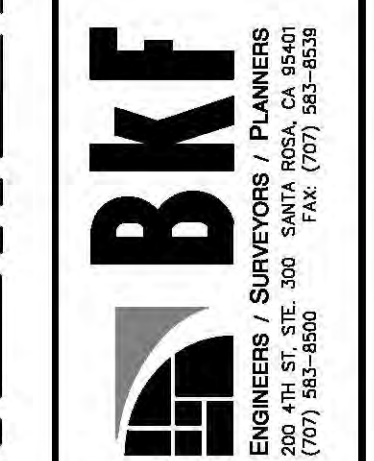
THE ZONING OF THIS PARCEL IS TRANSIT VILLAGE RESIDENTIAL TV-R-H-SA.

Revisions	No.	Date	Scale	Design	Drawn	Approved	App. No.
		OCT 2016	AS SHOWN	JAB	JAB	EDW	20160907-10

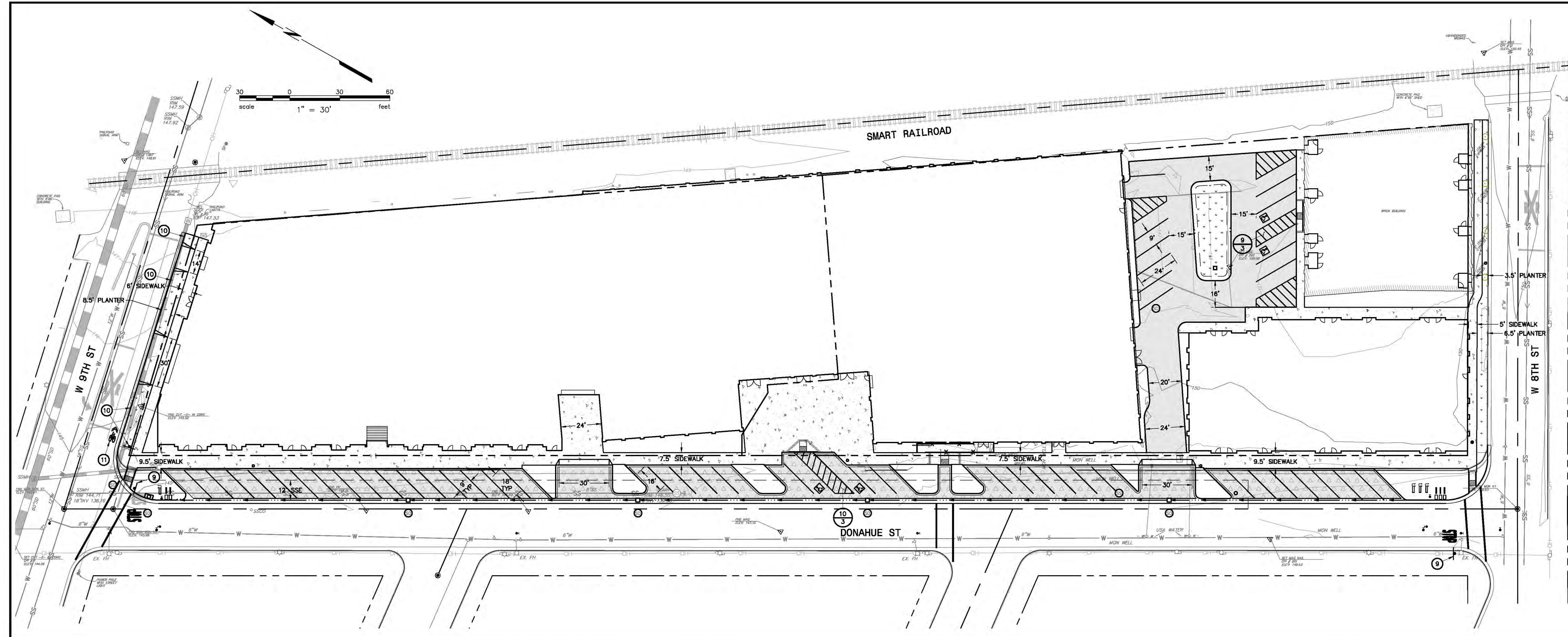




**PRELIMINARY**  
NOT FOR CONSTRUCTION  
DATE: 10/12/2016  
ERIC D. WADE  
C-81862



**DETURK WINERY VILLAGE APARTMENTS**  
APN 010-019-001 & 007  
8 WEST NINTH STREET & 806 DONAHUE STREET, SANTA ROSA, CALIFORNIA  
**STRIPING PLAN**



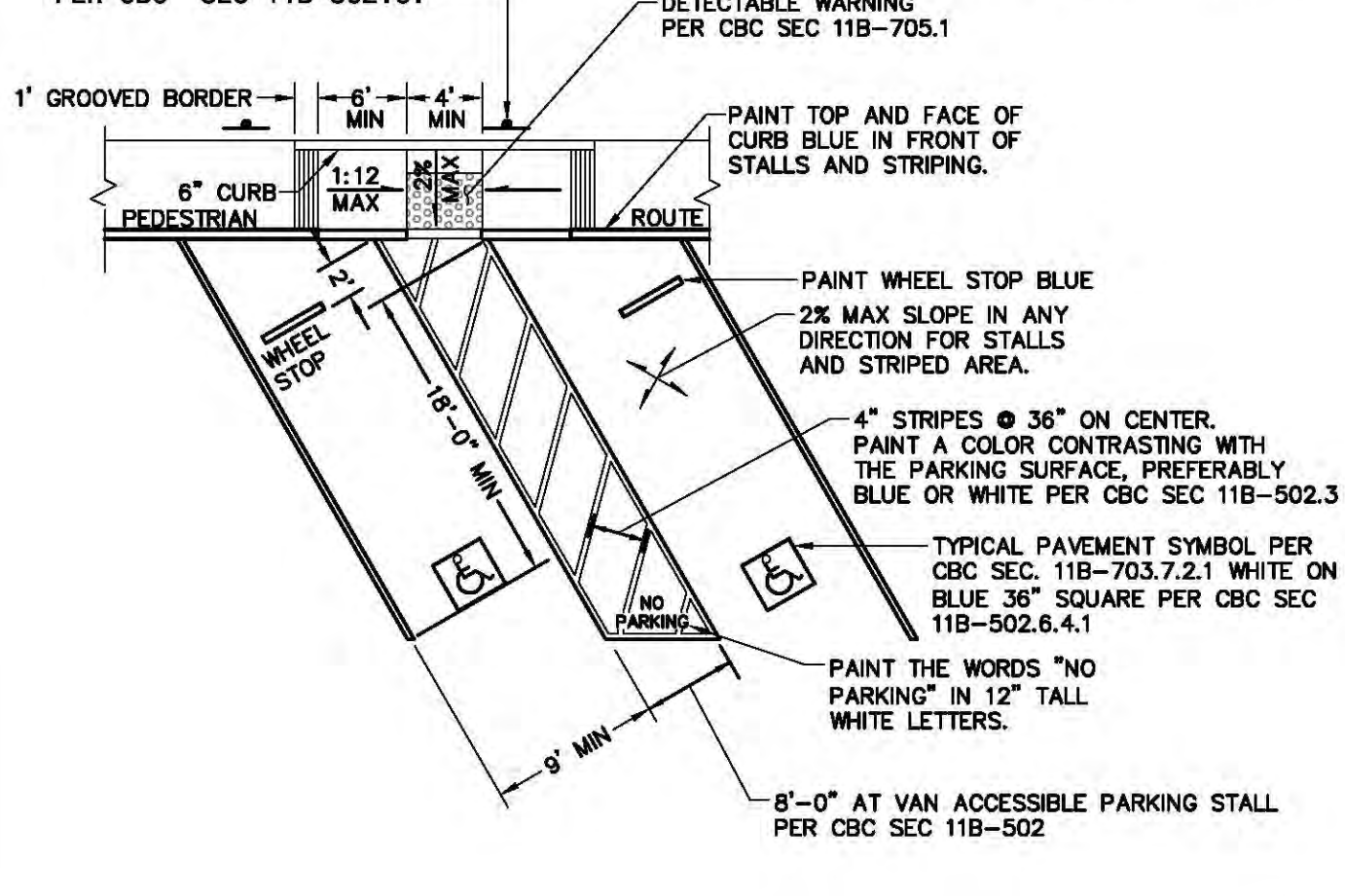
**NOTES**  
INSTALL SIGN NO LESS THAN 17" WIDE BY 22" HIGH POSTED EITHER 1) IN A CONSPICUOUS PLACE AT EACH ENTRANCE TO AN OFF-STREET PARKING FACILITY OR 2) IMMEDIATELY ADJACENT TO ONSITE ACCESSIBLE PARKING AND VISIBLE FROM EACH PARKING SPACE WHICH READS "UNAUTHORIZED VEHICLES PARKED IN DESIGNATED ACCESSIBLE SPACES NOT DISPLAYING DISTINGUISHING PLACARDS OR SPECIAL LICENSE PLATES ISSUED FOR PERSONS WITH DISABILITIES WILL BE TOWED AWAY AT THE OWNERS EXPENSE. TOWED VEHICLES MAY BE RECLAIMED AT: OR BY TELEPHONING \_\_\_\_\_." (BLANK SPACES SHALL BE FILLED IN WITH APPROPRIATE INFORMATION AS A PERMANENT PART OF THE SIGN.)

70 SQ. IN. DARK BLUE REFLECTIVE PORCELAIN, ENAMEL STEEL SIGN WITH WHITE INTERNATIONAL SYMBOL OF ACCESSIBILITY MOUNTED 80" OFF F.G. ON 1.5" Ø STEEL POST. PROVIDE AN ADDITIONAL SIGN OR ADDITIONAL LANGUAGE BELOW THE SYMBOL OF ACCESSIBILITY WHICH READS "MINIMUM FINE \$250." VAN SPACE SHALL HAVE AN ADDITIONAL "VAN ACCESSIBLE" SIGN MOUNTED BELOW THE SYMBOL OF ACCESSIBILITY PER CBC SEC 11B-502.6.

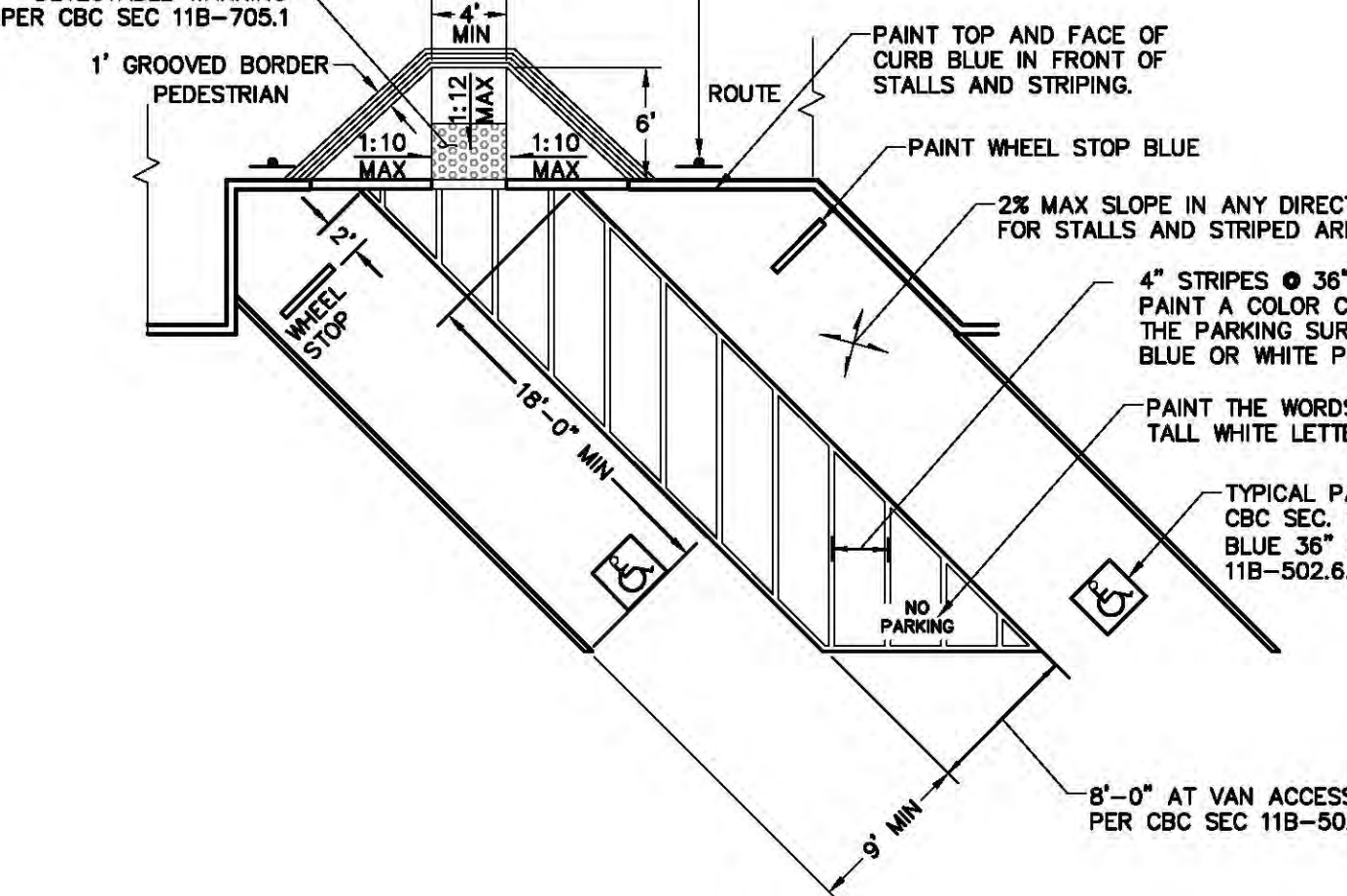
**NOTES**  
INSTALL SIGN NO LESS THAN 17" WIDE BY 22" HIGH POSTED EITHER 1) IN A CONSPICUOUS PLACE AT EACH ENTRANCE TO AN OFF-STREET PARKING FACILITY OR 2) IMMEDIATELY ADJACENT TO ONSITE ACCESSIBLE PARKING AND VISIBLE FROM EACH PARKING SPACE WHICH READS "UNAUTHORIZED VEHICLES PARKED IN DESIGNATED ACCESSIBLE SPACES NOT DISPLAYING DISTINGUISHING PLACARDS OR SPECIAL LICENSE PLATES ISSUED FOR PERSONS WITH DISABILITIES WILL BE TOWED AWAY AT THE OWNERS EXPENSE. TOWED VEHICLES MAY BE RECLAIMED AT: OR BY TELEPHONING \_\_\_\_\_." (BLANK SPACES SHALL BE FILLED IN WITH APPROPRIATE INFORMATION AS A PERMANENT PART OF THE SIGN.)

70 SQ. IN. DARK BLUE REFLECTIVE PORCELAIN, ENAMEL STEEL SIGN WITH WHITE INTERNATIONAL SYMBOL OF ACCESSIBILITY MOUNTED 80" OFF F.G. ON 1.5" Ø STEEL POST. PROVIDE AN ADDITIONAL SIGN OR ADDITIONAL LANGUAGE BELOW THE SYMBOL OF ACCESSIBILITY WHICH READS "MINIMUM FINE \$250." VAN SPACE SHALL HAVE AN ADDITIONAL "VAN ACCESSIBLE" SIGN MOUNTED BELOW THE SYMBOL OF ACCESSIBILITY PER CBC SEC 11B-502.6.

- KEYNOTES**
- ⑨ RELOCATE EXISTING STOP SIGN AND STREET SIGN.
  - ⑩ "NO PARKING" SIGN. PAINT CURB RED.
  - ⑪ CLASS III BIKE FACILITY SHARED LANE MARKINGS IN ACCORDANCE WITH THE CALIFORNIA MUTCD FIGURE 9C-9.



⑨ ACCESSIBLE PARKING STALLS  
NO SCALE



⑩ ACCESSIBLE PARKING STALLS  
NO SCALE

Revisions	
No.	Description

Date: OCT 2016	Scale: AS SHOWN	Design: JAB	Drawn: JAB	Approved: EDW	Job No: 20160907-10
Drawing Number:					

**REFERENCE NOTES SCHEDULE STREET NORTH**

SYMBOL	DESCRIPTION	QTY	DETAIL
3	TREE UPLIGHT: VISTA #GR-3106-Z-13-W-SP	8	
6	PLANTER W/DECOMPOSED GRANITE FLUSH W/ADJACENT PAVING. PROVIDE MIN. 500 CUBIC FEET ROOT ZONE USING SILVA CELLS OR STRUCTURAL SOILS.		
10	6" TALL STEEL PLANTER WITH SCATTERED PLANTING IN DECOMPOSED GRANITE	3/1	
13	SEAT WALL: 15" WIDE x 18" TALL, INTEGRAL CONC. COLOR: DAVID "MESA BUFF", AGGREGATE: "SIERRA GOLD"	4/1	

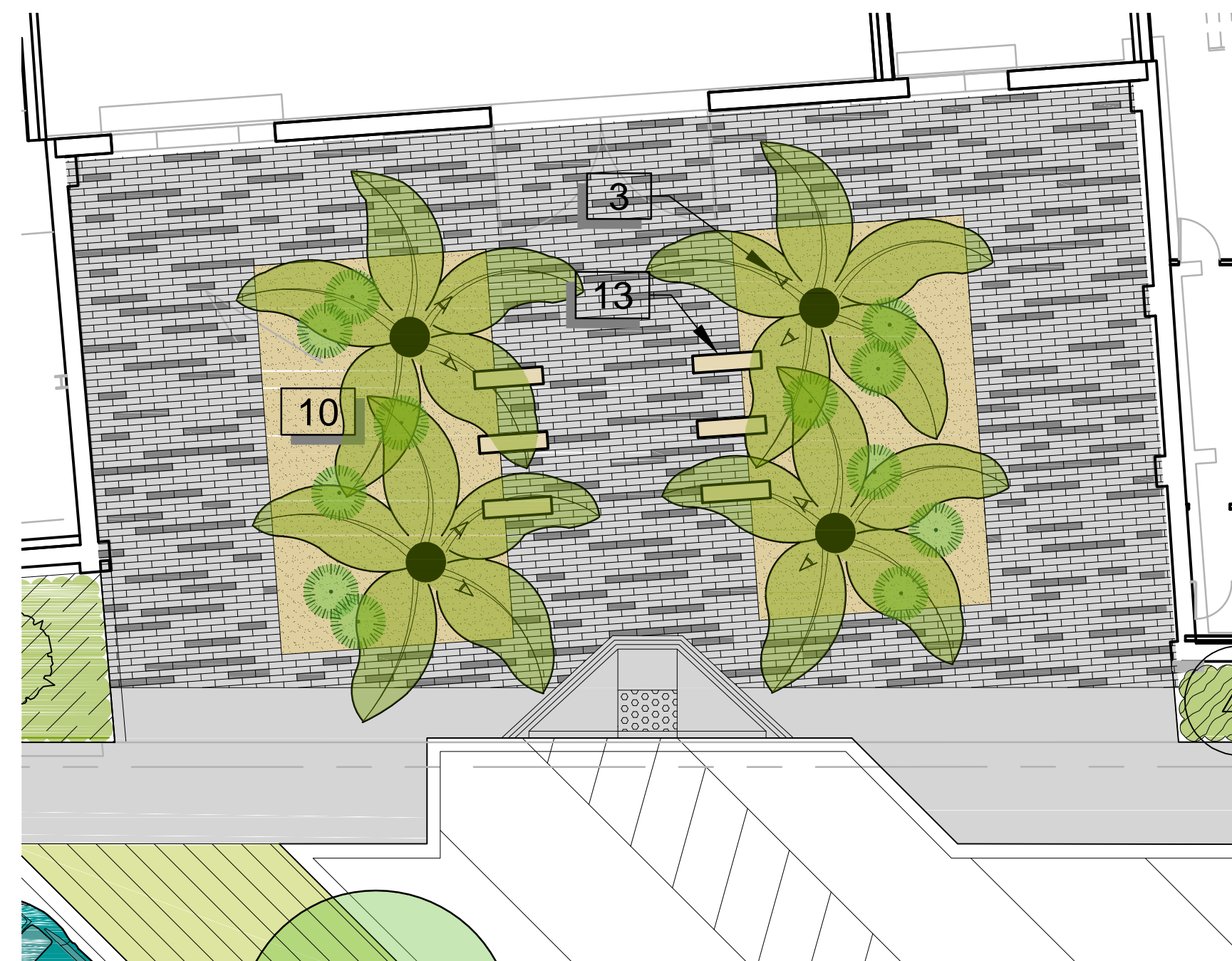
SYMBOL	PAVING DESCRIPTION	QTY	DETAIL
[Pattern]	DECOMPOSED GRANITE	1,150 sf	
[Pattern]	ENTRY PAVERS	2,235 sf	2/1

**PLANT SCHEDULE**

SEE SHEET 2 FOR NORTH AREA PLANT SCHEDULE.

**IRRIGATION COMPLIANCE**

ALL IRRIGATION SHALL BE DRIP OR DRIPPERLINE. SPECIFIC DESIGN SHALL BE SUBMITTED FOR A BUILDING PERMIT AND SHALL COMPLY WITH ALL PROVISIONS OF THE CITY OF SANTA ROSA'S WATER CONSERVATION ORDINANCE.



**1 ENTRY AREA ENLARGEMENT**  
1"=10'-0"



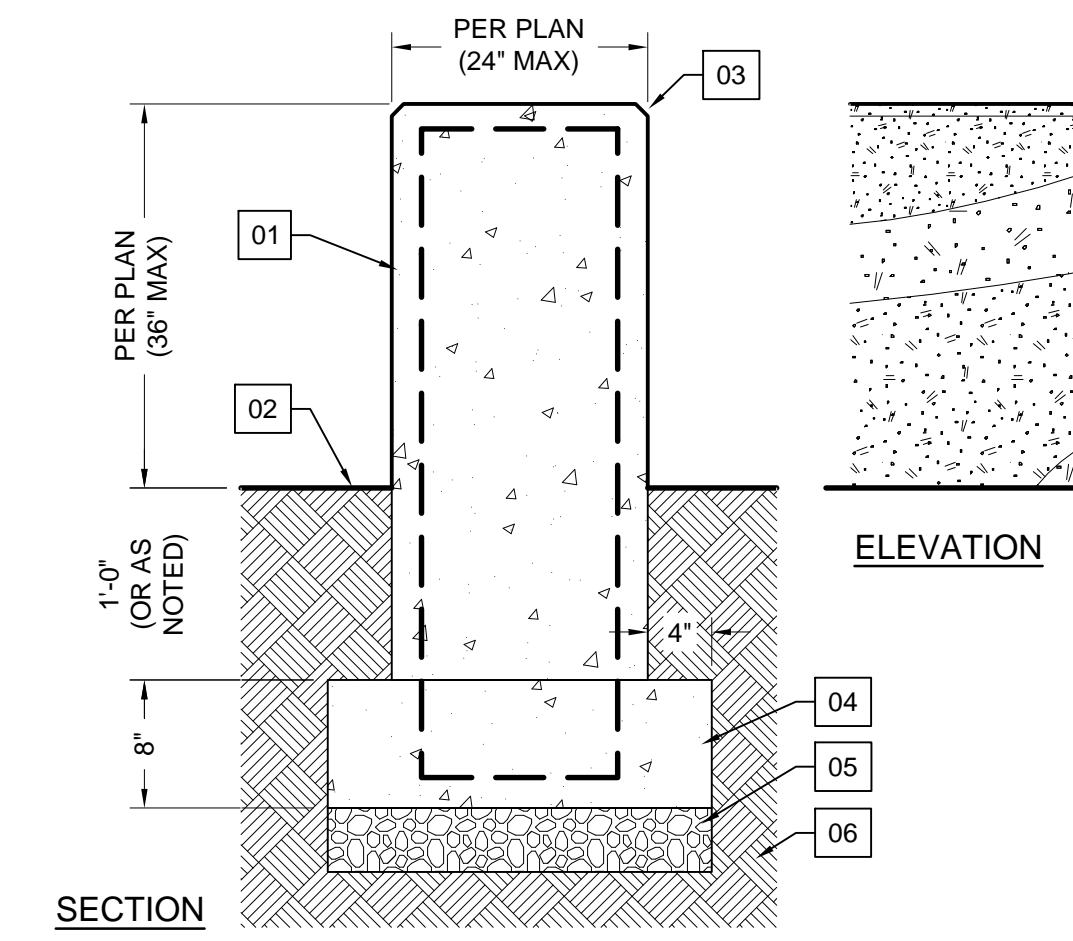
**2 ENTRY PAVERS**  
NTS

NOTES  
6x26 PLANK PAVERS BY PACIFIC INTERLOCK, COLOR AS SHOWN (TWO-TONE GRAY WITH RANDOM STRIPS)

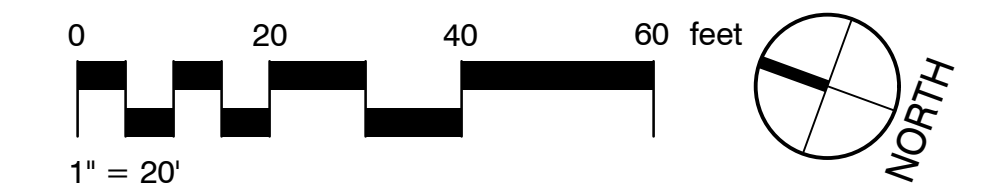


**3 ENTRY PLANTER**  
D-01 NTS

PLANTS IN DECOMPOSED GRANITE SURFACE (NOT INTENDED FOR USE)  
6" TALL STEEL EDGE

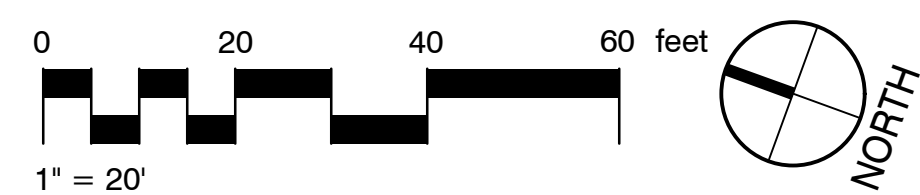
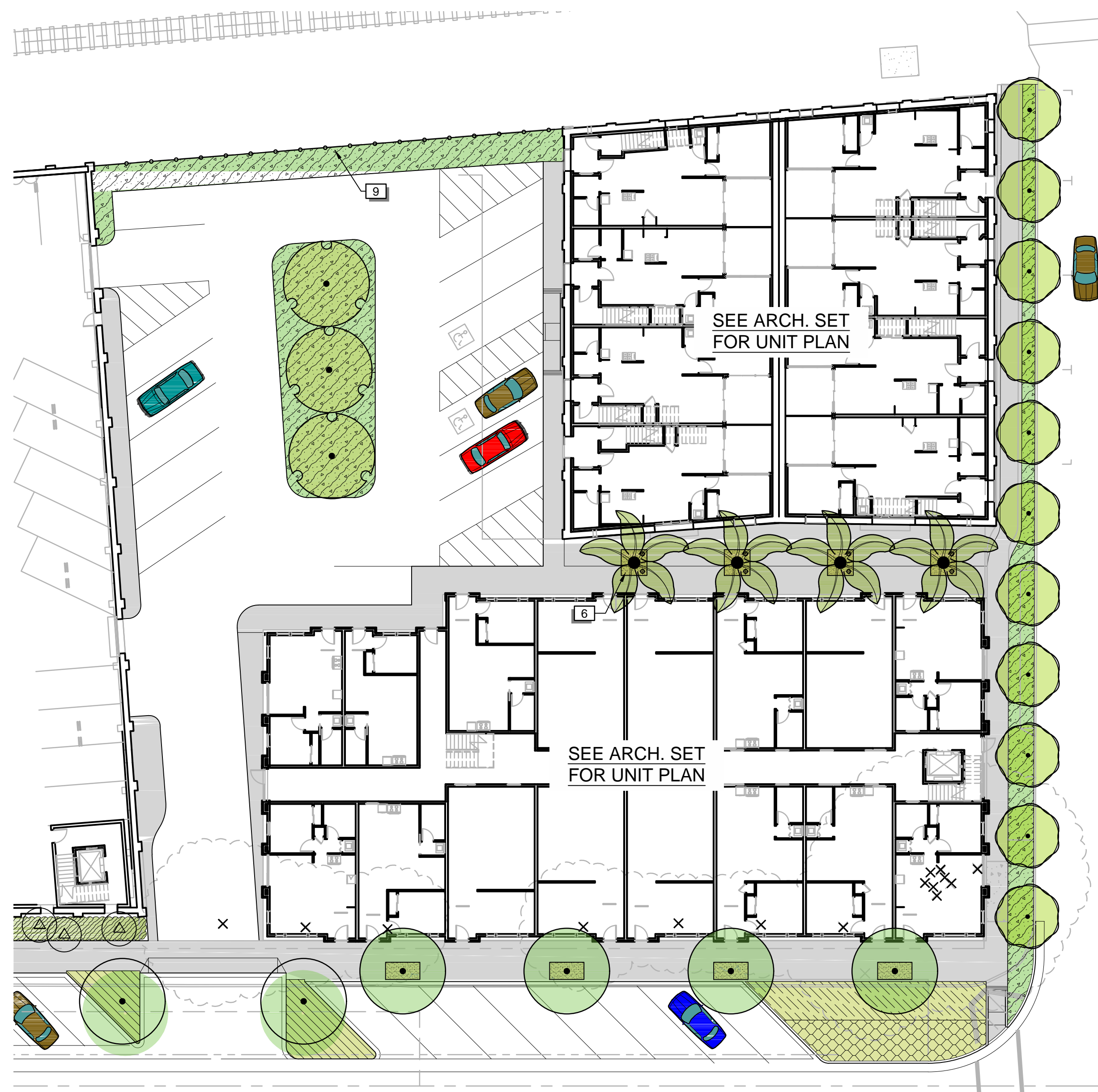


**4 DRY-MIX RUSTIC COLORED CONC. WALL-2**  
D-02 1" = 1'-0"



LEGEND  
01 DRY-MIX COLORED CONCRETE WITH COLORED AGGREGATE (SEE PLAN). (DRY CONSISTENCY TO LEAVE SMALL VOIDS.) LIGHT SAND BLAST (PREPARE 3x3 MOCKUPS FOR REVIEW)  
02 SURFACE PER PLAN  
03 3/4" CHAMFER ALL EDGES  
04 #4 BAR 16" OCBW & CONC. FOOTING FOR RETAINING WALLS UP TO 3' AND FREESTANDING WALLS UP TO 4' (FOR OTHER WALLS SEE STRUCTURAL PLANS)  
05 4" CLASS 2 AGG. BASE 95% R.C.  
06 PREPARED SUBGRADE

NOTES  
1. SIZE, CONC. COLOR AND AGGREGATE COLOR PER PLAN  
2. PROVIDE MASTIC EXPANSION JOINTS EVERY 30'. COLOR TO MATCH WALL.



NOTES  
STEEL GRATE FENCE,  
GALVANIZED OR BLACK,  
PLANTED WITH VINES

1 6' STEEL FENCE  
NTS D-10

### PLANT SCHEDULE STREET SOUTH

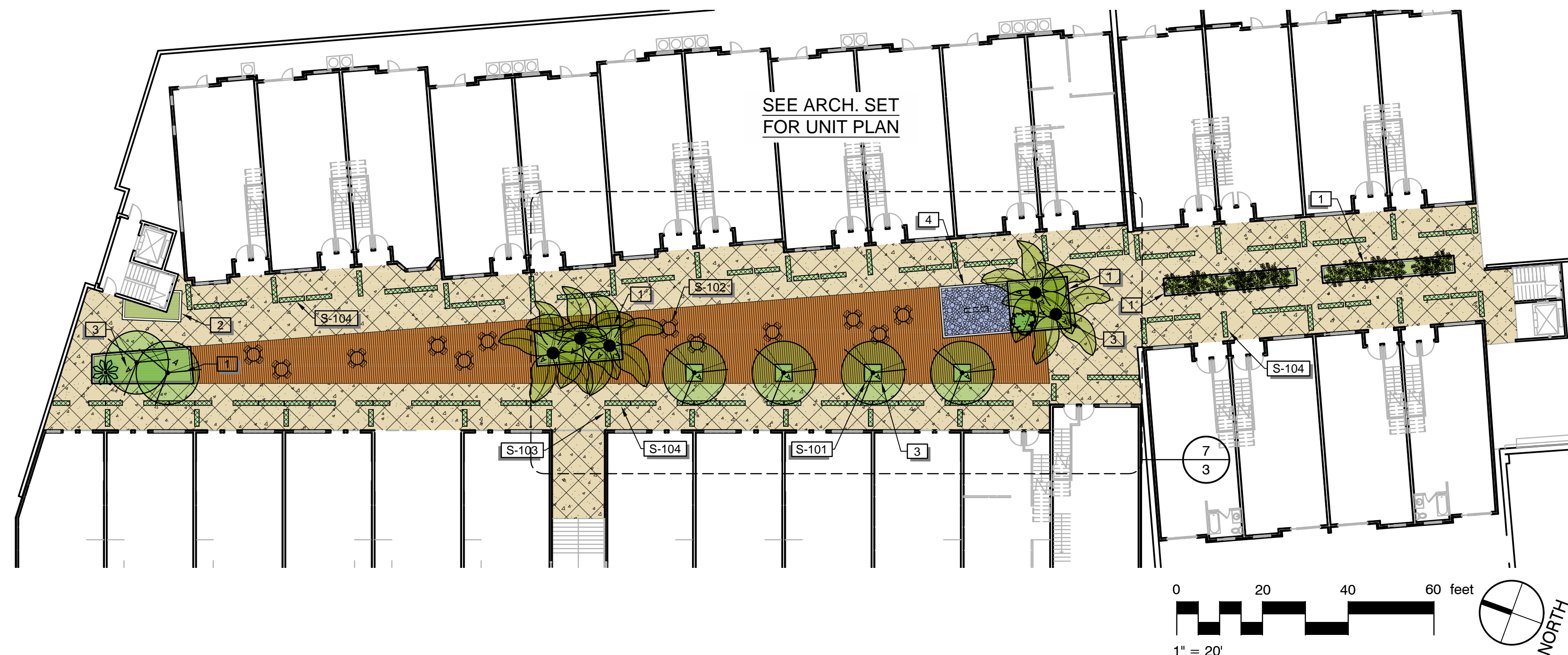
TREES	BOTANICAL NAME / COMMON NAME	CONT	QTY	REMARKS	
	Lagerstroemia x 'Tuscarora' / Crape Myrtle Coral Pink	36" box	11		
	Magnolia grandiflora 'Samuel Sommer' TM / Southern Magnolia	36" box	5		
	Ulmus parvifolia 'True Green' / True Green Elm	36" box	3		
PALM TREES	BOTANICAL NAME / COMMON NAME	CONT	QTY	REMARKS	
	Phoenix dactylifera / Date Palm	20'-25' trunk	4		
SHRUB AREAS	BOTANICAL NAME / COMMON NAME	CONT	SPACING	QTY	REMARKS
	Carex divulsa / Berkeley Sedge	1 gal	24" o.c.	62	
	Juncus patens 'Elk Blue' / Spreading Rush	1 gal	36" o.c.	263	
	Pittosporum tobira 'Wheeler's Dwarf' / Dwarf Pittosporum	5 gal	48" o.c.	26	
	Yucca filamentosa 'Variegata' / Variegated Adams's Needle	5 gal	48" o.c.	31	

### REFERENCE NOTES SCHEDULE STREET SOUTH

SYMBOL	DESCRIPTION	QTY	DETAIL
	PLANTER W/DECOMPOSED GRANITE FLUSH W/ADJACENT PAVING. PROVIDE MIN. 500 CUBIC FEET ROOT ZONE USING SILVIA CELLS OR STRUCTURAL SOILS.		
	6' STEEL FENCE: SIMILAR TO BALCONY METALWORK	1/2	
SYMBOL	DESCRIPTION	QTY	DETAIL
	TREES TO BE REMOVED (BLACK WALNUT, CHINESE HACKBERRY)	30	
	IN-GRADE TREE UPLIGHT: VISTA #GR-XXX-Z-13-W-SP	8	
SYMBOL	PAVING DESCRIPTION	QTY	DETAIL
	DECOMPOSED GRANITE	272 sf	

### PLANT SCHEDULE STREET NORTH

TREES	BOTANICAL NAME / COMMON NAME	CONT	QTY	REMARKS	
	Magnolia grandiflora 'Samuel Sommer' TM / Southern Magnolia	36" box	13		
	Pistacia chinensis / Chinese Pistache	24" box	7		
PALM TREES	BOTANICAL NAME / COMMON NAME	CONT	QTY	REMARKS	
	Phoenix dactylifera / Date Palm	20'-25' trunk	4		
SHRUBS	BOTANICAL NAME / COMMON NAME	CONT	QTY	REMARKS	
	Cercis occidentalis / Western Redbud	15 gal	11		
	Chondropetalum tectorum / Cape Rush	5 gal	18		
	Hibiscus syriacus 'Helene'	15 gal	7		
	Loropetalum chinense rubrum 'Razzleberri' / Razzleberri Fringe Flower	5 gal	3		
	Ribes speciosum 'Rana Creek' / Fuchsia Flowering Gooseberry	5 gal	1		
	Rosa rugosa (double pink) / Rugosa Rose (double pink)	5 gal	2		
	Rosmarinus officinalis 'Tuscan Blue' / Tuscan Blue Rosemary	5 gal	3		
	Senna phyllodinea / Senna	5 gal	2		
	Westringia fruticosa 'Morning Light' / Morning Light Coast Rosemary	5 gal	3		
SHRUB AREAS	BOTANICAL NAME / COMMON NAME	CONT	SPACING	QTY	REMARKS
	Carex divulsa / Berkeley Sedge	1 gal	24" o.c.	417	
	Juncus patens 'Elk Blue' / Spreading Rush	1 gal	36" o.c.	102	
	Pittosporum tobira 'Cream De Mint' TM / Cream De Mint Dwarf Mock Orange	5 gal	36" o.c.	91	
	Pittosporum tobira 'Wheeler's Dwarf' / Dwarf Pittosporum	5 gal	48" o.c.	17	
	Yucca filamentosa 'Variegata' / Variegated Adams's Needle	5 gal	48" o.c.	11	
GROUND COVERS	BOTANICAL NAME / COMMON NAME	CONT	SPACING	QTY	REMARKS
	Arctostaphylos 'Point Reyes'	5 gal	42" o.c.	5	
	Carex divulsa / Berkeley Sedge	1 gal	24" o.c.	13	
	Helictotrichon sempervirens 'Sapphire' / Blue Oat Grass	1 gal	36" o.c.	24	
	Hemerocallis Mix / Daylily Mix	1 gal	24" o.c.	28	
	Rubus pentalobus 'Emerald Carpet' / Bramble	1 gal	48" o.c.	48	
	Salvia leucantha 'Midnight' / Mexican Bush Sage	1 gal	24" o.c.	28	
	Vinca minor 'Alba' / White Dwarf Periwinkle	flat	12" o.c.	110	with mixed Narcissus (1 bulb per sq. ft.)



**PLANT SCHEDULE PODIUM**

TREES	BOTANICAL NAME / COMMON NAME	CONT	QTY	REMARKS
	Acer palmatum / Multi-Trunk Japanese Maple	36" box	6	
PALM TREES	BOTANICAL NAME / COMMON NAME	CONT	QTY	REMARKS
	Butia capitata / Pindo Palm	24" box	1	
	Chamaerops humilis / Mediterranean Fan Palm	24" box	1	
	Phoenix dactylifera / Date Palm	20'-25' trunk	5	
BAMBOO	BOTANICAL NAME / COMMON NAME	CONT	QTY	REMARKS
	Phyllostachys nigra 'Dikokuchiku' / Giant Black Bamboo	24" box	17	

**CONCEPT PLANT SCHEDULE PODIUM**

- RAISED PODIUM PLANTERS & BOXES**
- Abutilon pictum 'Thompsonii' / Variegated Flowering Maple
  - Acanthus mollis / Bear's Breech
  - Asparagus meyeri / Foxtail Fern
  - Azalea Southern Indica Hybrid / Southern Indica Azalea - pink or red
  - Camellia sasanqua / Christmas Camellia
  - Clivia miniata / Kaffir Lilly
  - Correa pulchella 'Orange Flame' / Australian Fuchsia
  - Cyrtomium falcatum / Holly Fern
  - Dianella tasmanica / Flax Lily
  - Dicksonia antarctica / Tasmanian Tree Fern
  - Fatsia japonica / Japanese Fatsia
  - Helleborus x 'Pink Lady' / Hellebore
  - Hydrangea quercifolia 'Alice' / Alice Oakleaf Hydrangea
  - Melianthus major / Honey Bush
  - Michelia figo 'Port Wine' / Banana Shrub
  - Nephrolepis cordifolia / Tuberous Sword Fern
  - Ribes speciosum / Fuchsia Flowering Gooseberry
  - Woodwardia fimbriata / Giant Chain Fern

**REFERENCE NOTES SCHEDULE PODIUM**

SYMBOL	DESCRIPTION	QTY	DETAIL
	RAISED PODIUM PLANTERS: 36" TALL, FINISH TBS		2/3
	LOW PLANTER: 12" CURB, FINISH TBS		
	TREE UPLIGHT: VISTA #GR-3106-Z-13-W-SP	15	
SITE FURNISHINGS			
SYMBOL	DESCRIPTION	QTY	DETAIL
	TREE PLANTER: 48"x48"x36" TALL	4	3/3
	TABLES + CHAIRS (TBS BY OWNER)	12	
	4' PLANTER: 48"x14"x24" TALL	25	5/3
	6' PLANTER: 72"x14"x24" TALL	81	5/3
RECYCLING WATER FEATURE			
SYMBOL	DESCRIPTION	QTY	DETAIL
	RECIRCULATING WATER FEATURE: RAIN RING ABOVE @ 4TH FLOOR, POOL IS 18" TALL, FINISH TBS	171 sf	1/3
PAVING			
SYMBOL	DESCRIPTION	QTY	DETAIL
	HARDWOOD DECK: 1x6 SET FLUSH WITH ADJACENT PAVING	2,790 sf	4/3
	CONCRETE PAVING #1	15,630 sf	6/3



NOTES  
1. FOUNTAIN IS A RAIN MANIFOLD SUSPENDED FROM 4TH FLOOR  
2. POOL IS 18" TALL CORTEN SURROUND WITH STONES INSIDE

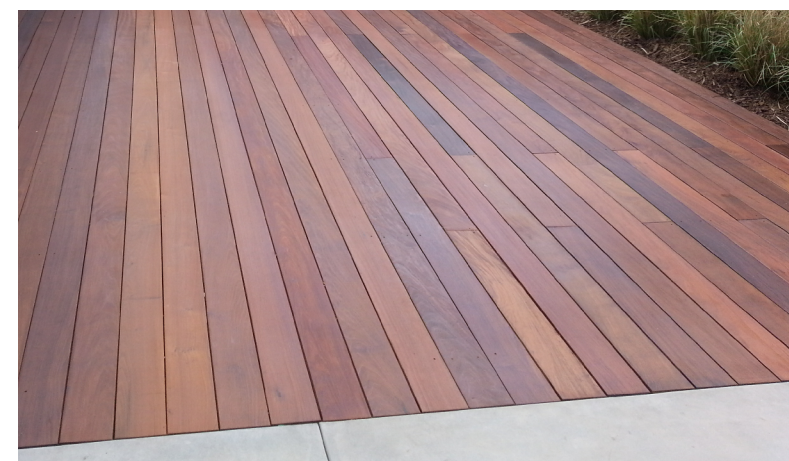


NOTES  
BOARD-FORM CONCRETE, NATURAL COLOR OR DAVIS COLOR "SANDSTONE"



NOTES  
TOURNESOL WILSHIRE SQUARE FIBERGLASS PLANTER, COLOR "CHAPARRAL"

- 1** FOUNTAIN NTS
- 2** RAISED PLANTERS D-07 NTS
- 3** TREE PLANTERS D-04 NTS

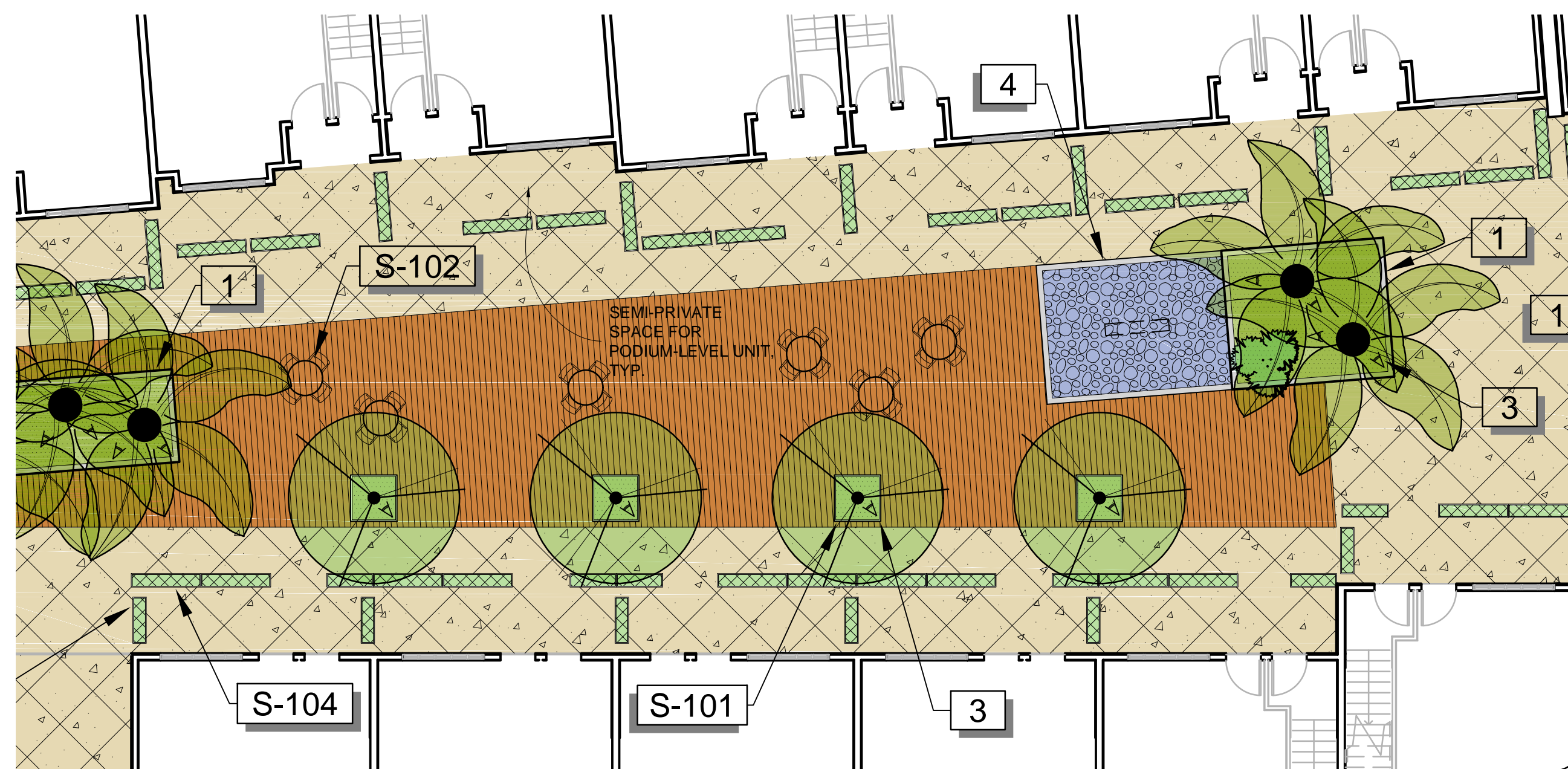


NOTES  
TURNESOL PLANTER, FRC TRAVERTINE FINISH, DAVIS COLOR "SANDSTONE" (MATCH PAVEMENT)



NOTES  
PLIGHT BROOM FINISH IN OPPOSING DIRECTIONS. TOOL JOINTS, DAVIS COLOR "SANDSTONE" OR SIMILAR

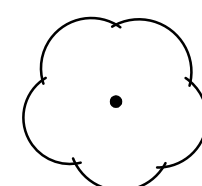
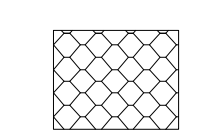
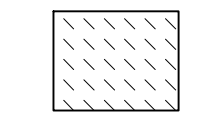
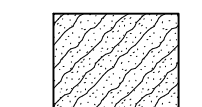
- 4** HARDWOOD DECKING NTS
- 5** 4' AND 6' PLANTERS D-09 NTS
- 6** CONCRETE PAVING #1 D-06 NTS



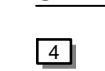

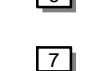

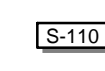
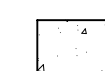

- 7** PODIUM ENLARGEMENT 1"=10'-0"

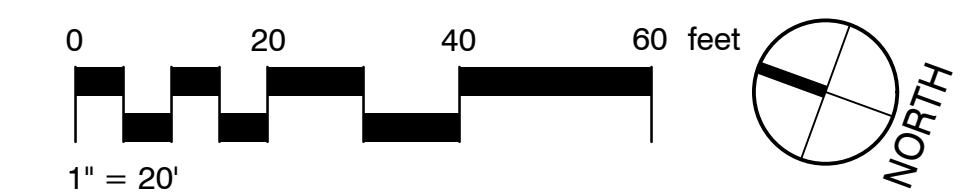


### CONCEPT PLANT SCHEDULE ROOF

	<p><b>FRUIT TREES: PLUM, APPLE, APRICOT, NECTARINE</b></p> <p><i>Malus domestica</i> 'Golden Delicious' / Golden Delicious Apple  <i>Malus domestica</i> 'Gravenstein' / Apple  <i>Malus x domestica</i> 'Anna' / Anna Apple  <i>Prunus armeniaca</i> 'Blenheim' / Blenheim Apricot  <i>Prunus armeniaca</i> 'Moorpark' / Moorpark Apricot  <i>Prunus domestica</i> 'Elephant Heart' / Elephant Heart Plum  <i>Prunus domestica</i> 'Green Gage' / European Plum  <i>Prunus domestica</i> 'Late Santa Rosa' / Late Santa Rosa Plum  <i>Prunus domestica</i> 'Santa Rosa' / Santa Rosa Plum</p>
	<p><b>LOW WATER-USE AREA</b></p> <p><i>Dietes vegeta</i> 'Variegata' / Variegated African Iris  <i>Pittosporum tobira</i> 'Cream De Mint' TM / Cream De Mint Dwarf Mock Orange  <i>Rosmarinus officinalis</i> 'Huntington Blue' / Rosemary  <i>Salvia greggii</i> 'Pink' / Pink Autumn Sage  <i>Yucca filamentosa</i> 'Variegata' / Variegated Adams's Needle</p>
	<p><b>HERBS, SUCCULENTS &amp; GRASSES</b></p> <p><i>Carex divulsa</i> / Berkeley Sedge  <i>Carex testacea</i> 'Prairie Fire' / Prairie Fire Sedge  <i>Crocsmia x crocosmiflora</i> / Common Crocosmia  <i>Echeveria</i> Mix / Echeveria  <i>Erigeron karvinskianus</i> 'Moerheimii' / Pink Santa Barbara Daisy  <i>Festuca ovina glauca</i> / Blue Sheep Fescue  <i>Gaura lindheimeri</i> 'Siskiyou Pink' / Siskiyou Pink Gaura  <i>Helianthemum nummularium</i> 'Wisley Pink' / Wisley Pink Rock Rose  <i>Helictotrichon sempervirens</i> 'Sapphire' / Blue Oat Grass  <i>Hemerocallis</i> Mix / Daylily Mix  <i>Heuchera x Fireworks</i> / Fireworks Coral Bells  <i>Iris germanica</i> / German Iris  <i>Lantana montevidensis</i> / Trailing Lantana  <i>Lavandula angustifolia</i> 'Hidcote Superior' / Hidcote Superior Lavender  <i>Pennisetum orientale</i> / Oriental Fountain Grass  <i>Pennisetum rubrum</i> / Fountain Grass  <i>Rosmarinus officinalis</i> 'Huntington Carpet' / Huntington Carpet Rosemary  <i>Salvia greggii</i> / Autumn Sage  <i>Salvia leucantha</i> 'Midnight' / Mexican Bush Sage  <i>Sedum</i> Mix / Sedum  <i>Teucrium chamaedrys</i> / Germander  <i>Thymus x citriodorus</i> 'Lime' / Lime Thyme</p>
	<p><b>RAISED VEGETABLE BEDS</b></p>

### REFERENCE NOTES SCHEDULE ROOF

SYMBOL	DESCRIPTION	QTY	DETAIL
	RAISED VEGETABLE PLANTERS: 4'x8'x24" TALL	2/3	
	PLANTER W/DECOMPOSED GRANITE FLUSH W/ADJACENT PAVING		
	12" TALL STEEL PLANTER		
	SHADE STRUCTURE	2/4	
SYMBOL	SITE FURNISHINGS DESCRIPTION	QTY	DETAIL
	BENCH	3	3/4
SYMBOL	PAVING DESCRIPTION	QTY	DETAIL
	CONCRETE PAVING #1	4,550 sf	3/2
	DECOMPOSED GRANITE	288 sf	



1 METAL EDGING  
NTS

2 STEEL GRATE SHADE STRUCTURE  
D-08 NTS

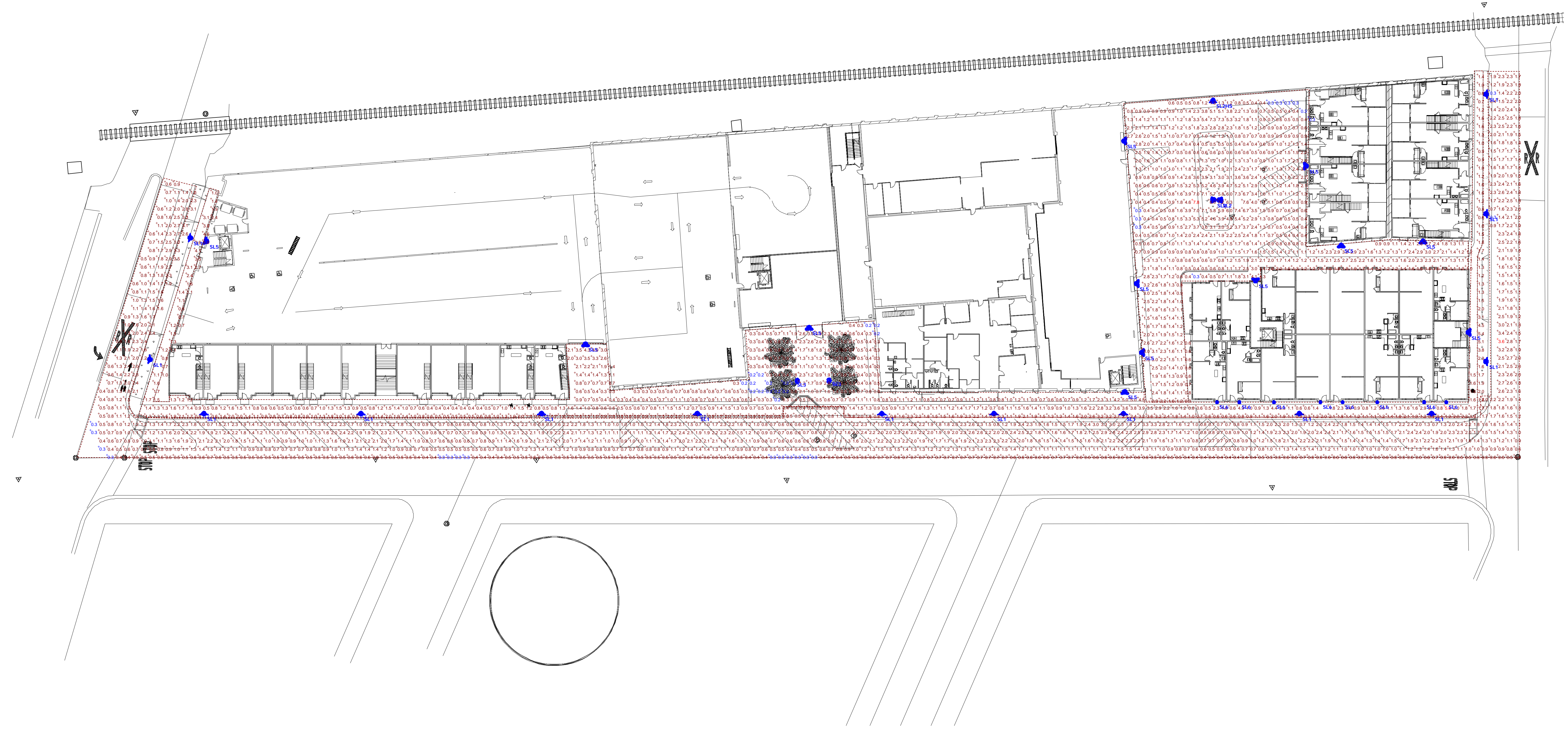
3 RECLAIMED WOOD BENCH  
D-11 NTS

D-12

Luminaire Schedule					
Symbol	Label	QTY	Description	LLF	Wattage
	SL5	12	LED Wallpack	1	28.1
	SL3	2	LED Bollard	1	22
	SL1	14	LED Street Light	1	55
	SL2	2	Pole Mounted LED Parking Lot Fixture	1	53.8
	SL2HS	1	LED Wallpack with House Shield	1	52
	SL6	8	Wall Mounted LED Downlight	0.5	6.77

Statistics							
Description	Symbol	Avg	Max	Min	Max/Min	Avg/Min	Avg/Max
Parking Lot	+	1.7 fc	7.8 fc	0.3 fc	26.0:1	5.7:1	0.2:1
Pedestrian Walkway	+	1.3 fc	5.6 fc	0.2 fc	28.0:1	6.5:1	0.2:1
Street Lighting	+	1.4 fc	3.6 fc	0.3 fc	12.0:1	4.7:1	0.4:1

**SUMMIT**  
 Summit Engineering, Inc  
 463 Aviation Blvd., Suite 200 • Santa Rosa, CA 95403  
 707-527-0775 • www.summit-sr.com



Plan View  
 Scale - 1" = 30'

Deturk Winery Village  
 Site Lighting Photometric Calculations

Designer  
 Date 9/19/2016  
 Scale Not to Scale  
 Drawing No.  
 Summary

















































