

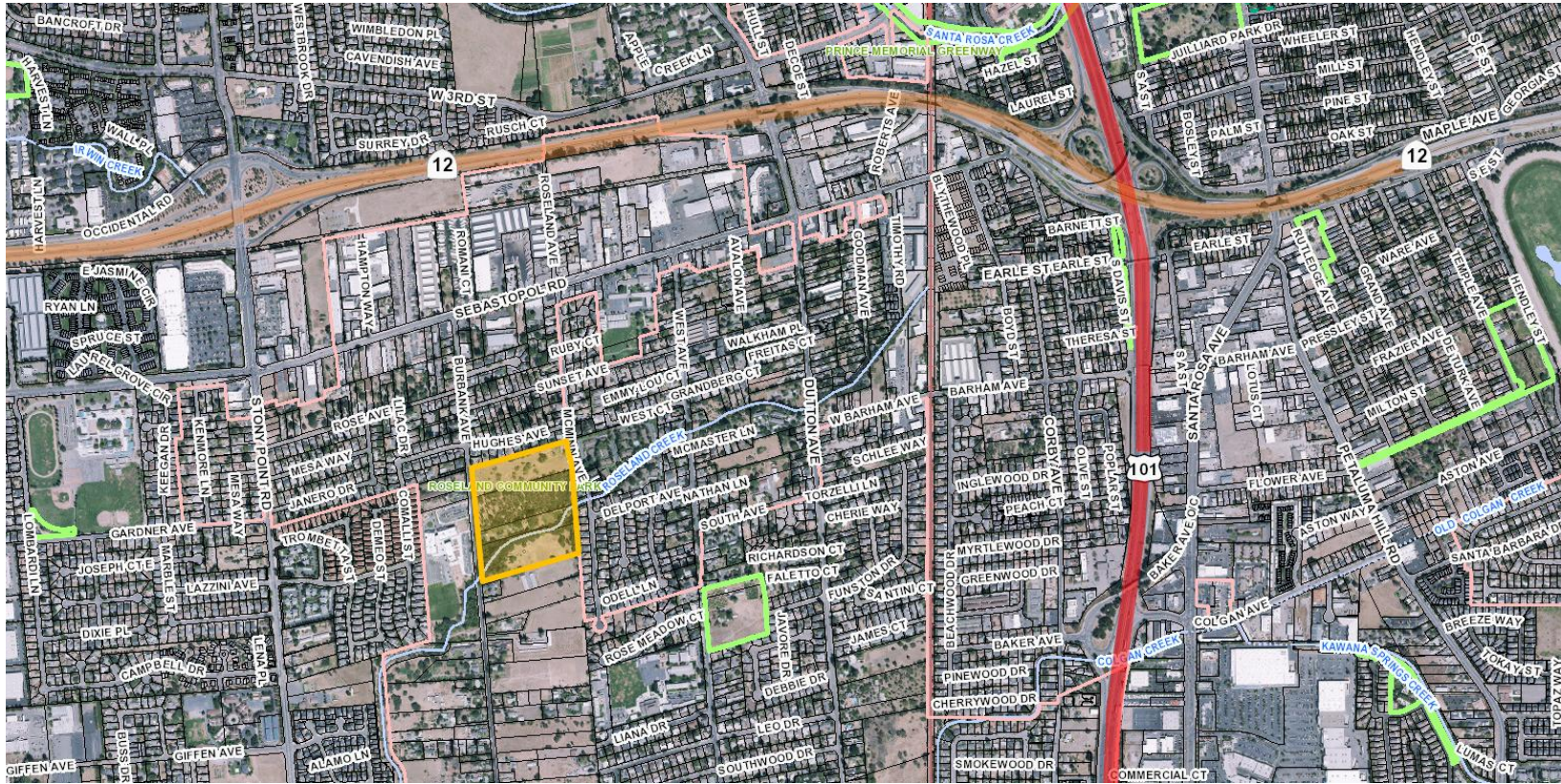


Professional Services Agreement with David J. Powers and Associates, Inc. for environmental review and declaration services for Roseland Creek Community Park

City Council Meeting
February 7, 2017

Jen Santos
Deputy Director, Recreation and Parks

LOCATION MAP



= Roseland Creek Community Park

PARK PROPERTY MAP



Roseland Creek Community Park environmental analysis includes all parcels outlined in orange

BACKGROUND

- Roseland Creek Community Park north and south land acquired via Sonoma County Agricultural Preservation and Open Space District (SCAPOSOD) matching grant program in 2010 and 2011
- Project to acquire remaining land admitted into 2016 SCAPOSOD grant cycle

BACKGROUND

- Environmental analysis relies on the 30% plans by a separate design consultant to complete the analysis
- 30% design aligned with environmental analysis ensures future Master Plan compliance with CEQA
- Community input included in master plan scope of services via the separate design consultant

PROCESS

- RFP February 2016
- Six proposals received
- Scoring and review by panel (staff and a Council member)
- David J. Powers and Associates most qualified and responsive

RECOMMENDATION

- It is recommended by the Recreation and Parks Department that Council, by resolution, approve a Professional Services Agreement with David J. Powers and Associates, Inc. to provide environmental review and declaration services for Roseland Creek Community Park in the amount of \$146,960.

Questions?