



# DR-4344-CA

---

Santa Rosa City Council  
Briefing  
December 12, 2017

David Cruise  
Cal OES Division Supervisor – Sonoma County

Robert M. Pesapane  
FEMA Division Supervisor – Sonoma County



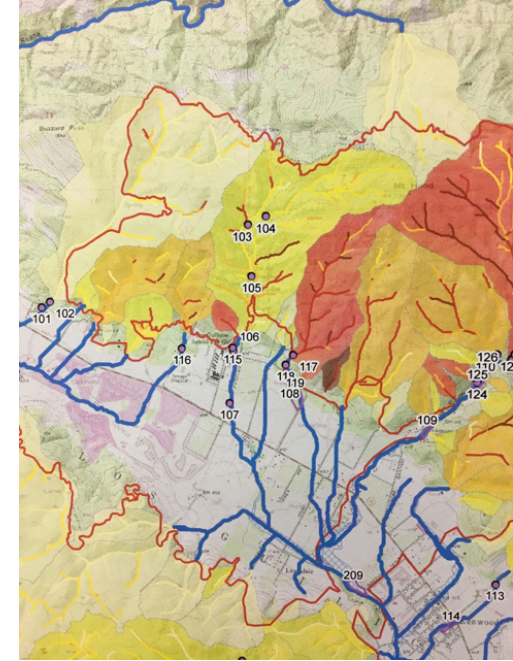
FEMA



# Watershed



- Partnering Agencies - City of Santa Rosa, Sonoma County, Cal OES
- Watershed has transitioned to the Recovery Operations Center
- There are currently no unmet needs from the state.
- Task Force created a form for utilities and the public to fill out if they see any areas they think might require attention.



FEMA

# Public Assistance

## Overview

Public Assistance (PA) is FEMA's largest grant program providing funds to assist communities responding to and recovering from major disasters or emergencies declared by the President. The program provides emergency assistance to save lives and protect property, and assists with permanently restoring community infrastructure affected by a federally declared incident.

The following types of local governments are eligible Applicants:

- Counties and parishes
- Municipalities, cities, towns, boroughs, and townships
- Local public authorities
- School districts
- Intrastate districts
- Councils of governments (regardless of whether incorporated as nonprofit corporations under State law)
- Regional and interstate government entities
- Agencies or instrumentalities of local governments
- State-recognized Tribes
- Special districts established under State law

Counties, municipalities and other eligible applicants that incurred damage to infrastructure during the same period may apply to Cal OES and FEMA for reimbursement under the Public Assistance categories.

### Emergency Work

Address an immediate threat:

- A** Debris removal
- B** Emergency protective measures

### Permanent Work

Restoration of:

- C** Roads/bridges
- D** Water control facilities
- E** Buildings/equipment
- F** Utilities
- G** Parks, recreational, and other facilities



# Sonoma County – Individual Assistance

Local Assistance Center (LAC)  
& Disaster Recovery Center  
(DRC) Visits as of 12-11-17:

LAC 1/DRC 5 – 8784  
DRC 1 – 2042

Individuals & Housing Program  
Overview as of 12-11-17:  
Total Distributed:  
\$8,357,123.78

Total Registrations: 16,489

Transitional Sheltering  
Assistance - 116





The Small Business Administration has received to date 1,8396 applications in Sonoma County

The Small Business Administration has approved \$70,514,600 combined home and business disaster loans for Sonoma County as of 12-10-2017



# EPA HHW Removal – Phase I

## Current Operations:

### EPA

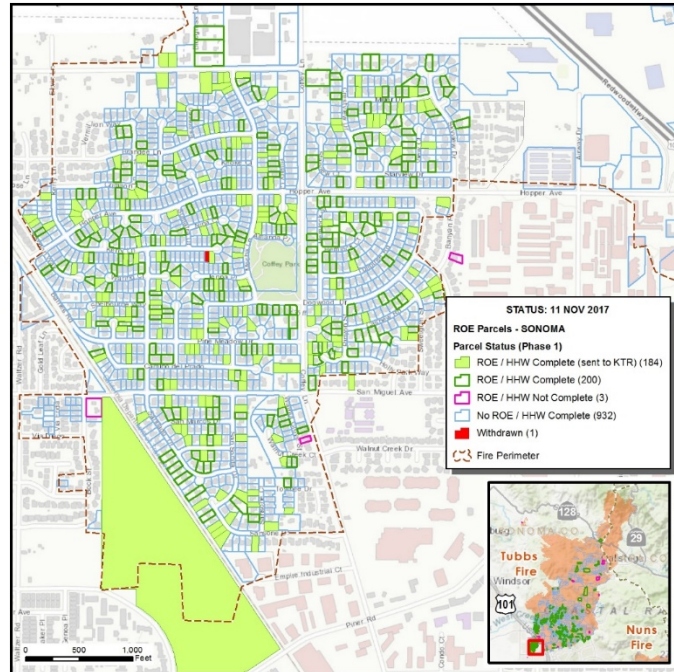
- Survey and collection teams continue collecting Household Hazardous Waste (HHW).
- As of 12/10/17, EPA has completed 5,744 properties in Sonoma County
- Sonoma County HHW staging area; open & processing HHW
- EPA has cleared 43 sites of Asbestos in Sonoma County



# USACE Debris Removal – Phase II



US Army Corps  
of Engineers®



- In coordination with Cal OES, FEMA and local officials, the U.S. Army Corps of Engineers (USACE) began debris removal from residential properties in Sonoma County on 11/6/2017
- USACE is tracking and mapping ROE data and HHW assessment/collection data to support the Debris Removal Task Force.
- As of 12/10; 1049 parcels have been cleared pending soil sampling
- 228 properties have been returned to the county.
- USACE Debris Hotline operational as of 11-19-17
- Debris was removed from the following schools:
  - Reibli Elementary (Mark West School District)
  - Alba Lane Farm School (Santa Rosa School District)
  - Dunbar School (Sonoma Valley Unified School District)
- Sonoma County has 4540 signed ROE's, 4079 have been processed by USACE as of 12/10



# Temporary Housing

- Direct Housing Operations (DHOPS):  
DHOPS Has placed 29 applicants at Sonoma County Fairgrounds RV Park.
- Working through GSA to lease Lot D at the Fairgrounds. The plan is to use Manufactured Housing Units.
- Direct Lease: 41 applicants
- IA -70 Housed: 29- RVs 41- Direct Lease







FEMA