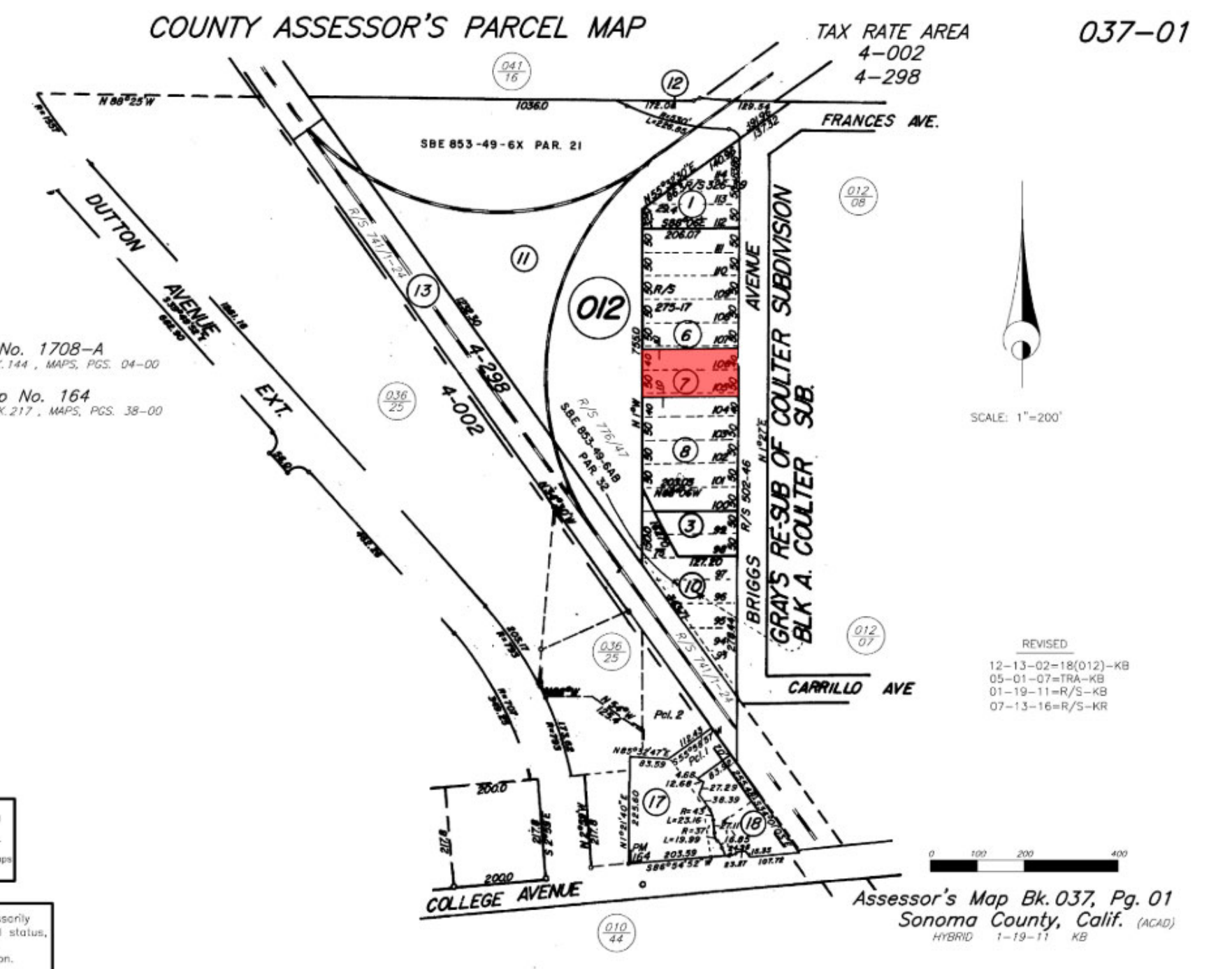
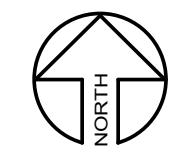


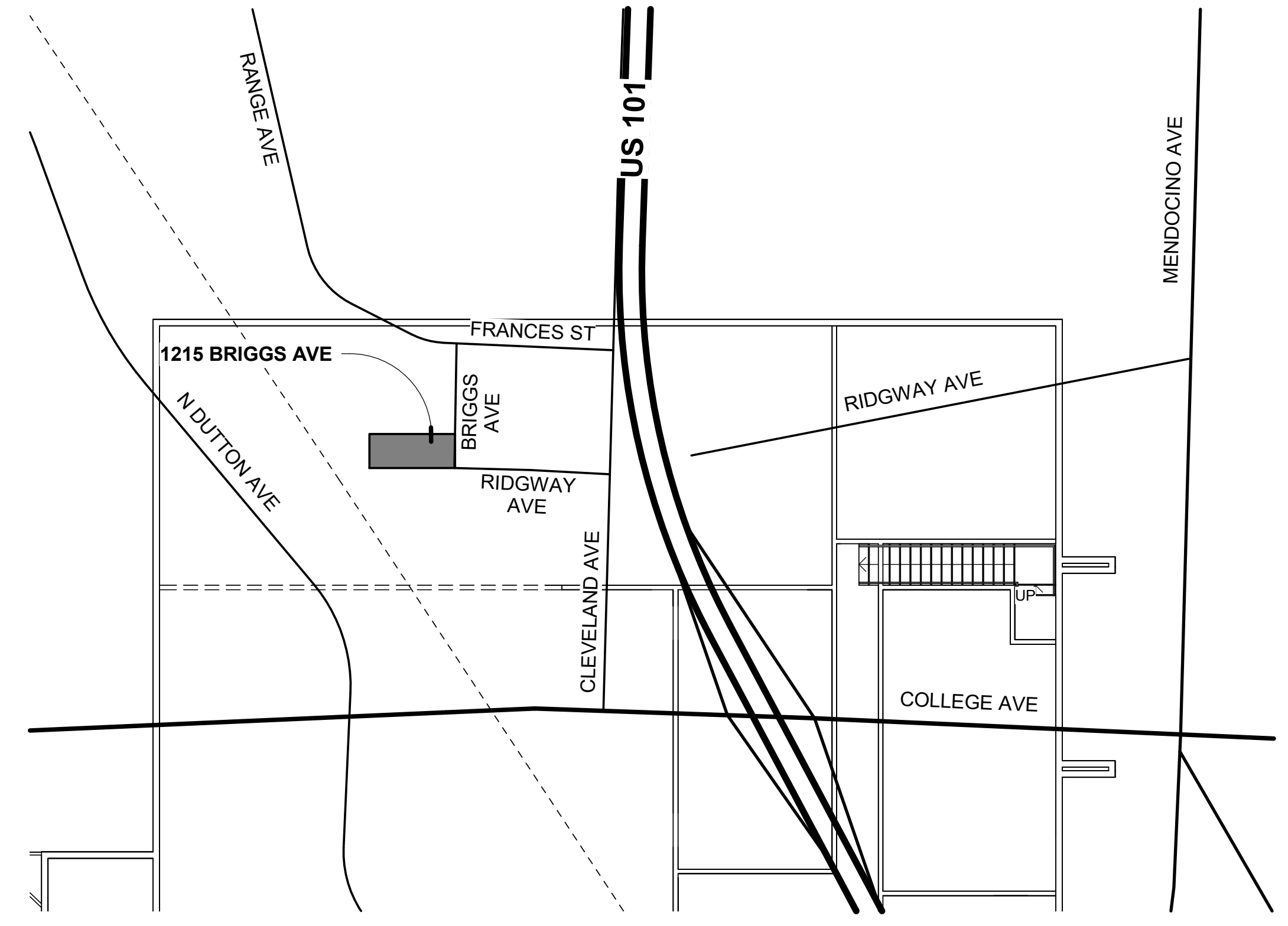
ZONING LEGEND

- | | | |
|-----------------------|-------------------------|--------------------------------|
| IL - LIGHT INDUSTRIAL | CG - GENERAL COMMERCIAL | NMU - NEIGHBORHOOD MIXED USE |
| BP - BUSINESS PARK | MMU - MAKER MIXED USE | R-3 - MULTI-FAMILY RESIDENTIAL |

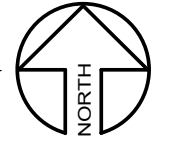
SITE PLAN - ZONING



COUNTY ASSESSOR PARCEL MAP



VICINITY MAP



SONOMA STRENGTH ACADEMY

1125 BRIGGS AVE
 SANTA ROSA, CA 95401





VIEW FROM SOUTH EAST



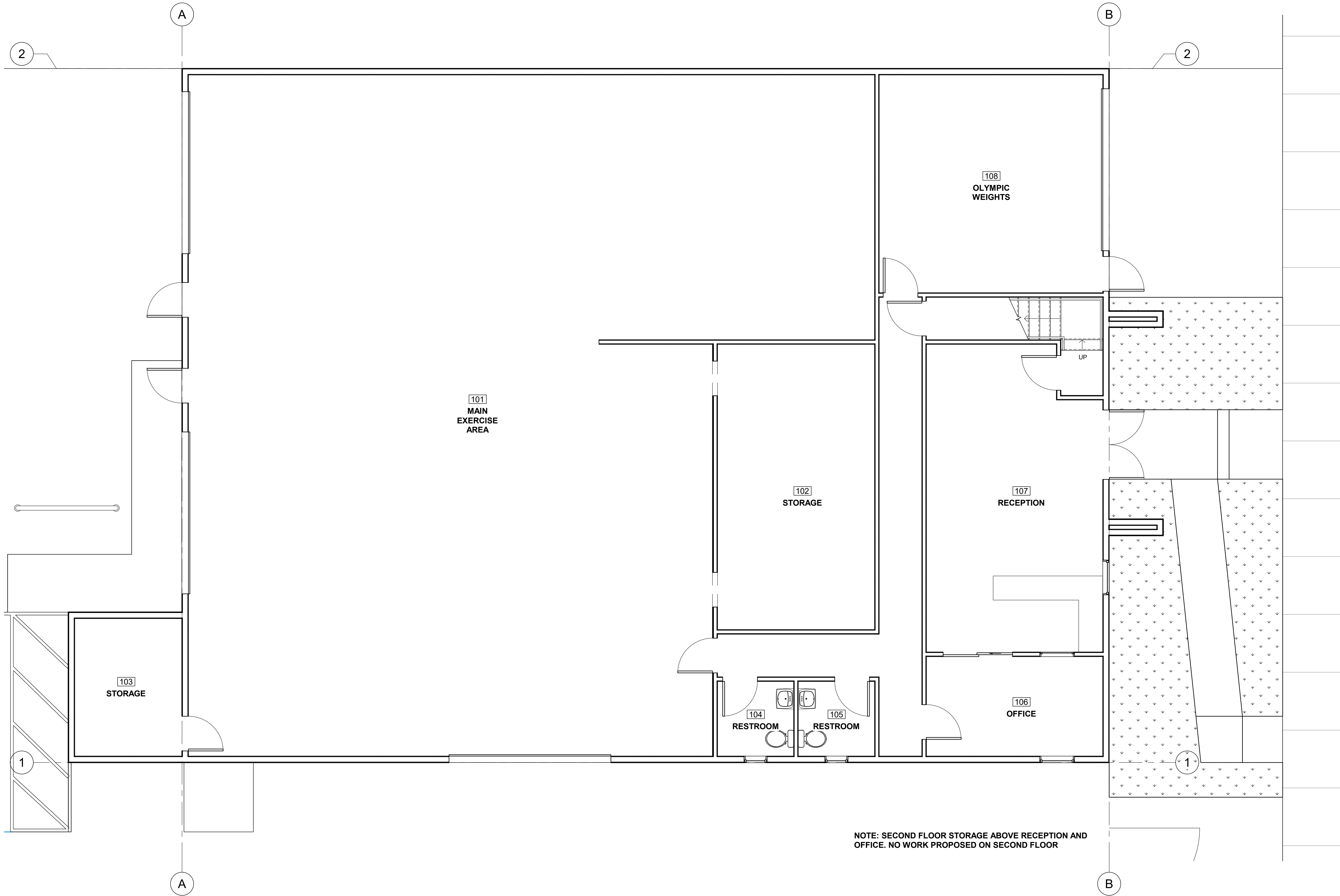
BRIGGS AVENUE ELEVATION



VIEW FROM NORTH EAST



VIEW FROM SOUTH WEST



101
MAIN
EXERCISE
AREA

102
STORAGE

103
STORAGE

104
RESTROOM

105
RESTROOM

107
RECEPTION

106
OFFICE

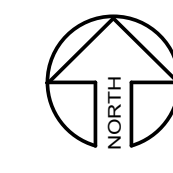
108
OLYMPIC
WEIGHTS

UP

NOTE: SECOND FLOOR STORAGE ABOVE RECEPTION AND OFFICE. NO WORK PROPOSED ON SECOND FLOOR

BRIGGS AVE

CONCEPTUAL FLOOR PLAN



A103
CONCEPTUAL
FLOOR PLAN
03.21.2023



SONOMA STRENGTH ACADEMY
1125 BRIGGS AVE
SANTA ROSA, CA 95401

