

# STARBUCKS DESIGN INTENT PACKAGE

## HWY 12 AND MISSION BLVD

4620 SONOMA HWY  
SANTA ROSA, CA 95409

STORE: #05778

CPN: #06682-056

DATE: 2020-08-20

### (STUDIO) REGIONAL TEAM

REAL ESTATE: DOUG MURPHY

DESIGN: HANNA LEE

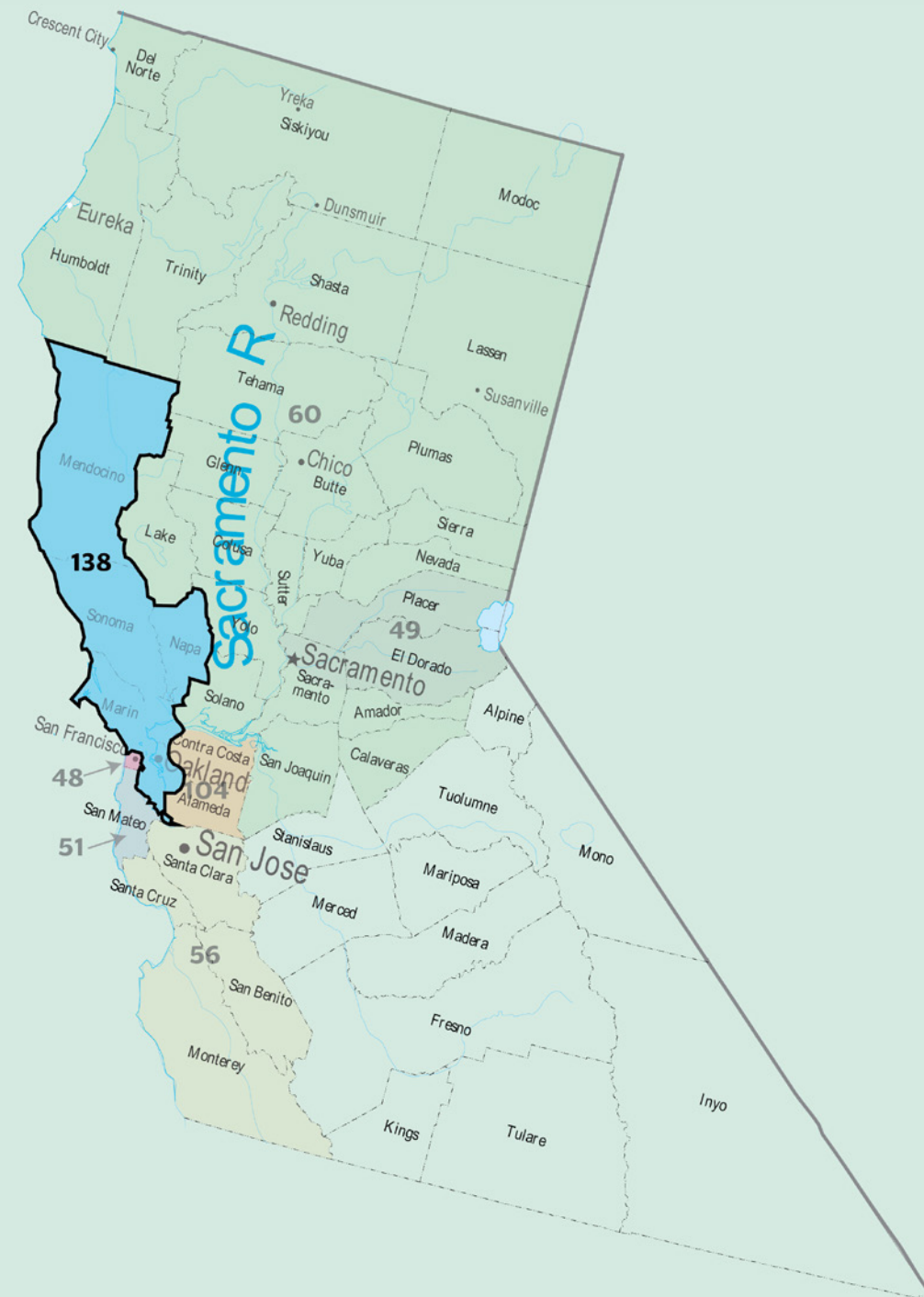
CONSTRUCTION: KELLY DENTINO

### PROJECT STATEMENT



*THIS NEW STORE IS A RELOCATION OF AN EXISTING CAFE. FOCUS ON ELEVATING THE 3RD PLACE AND IMPROVING ENGINE EFFICIENCIES.*

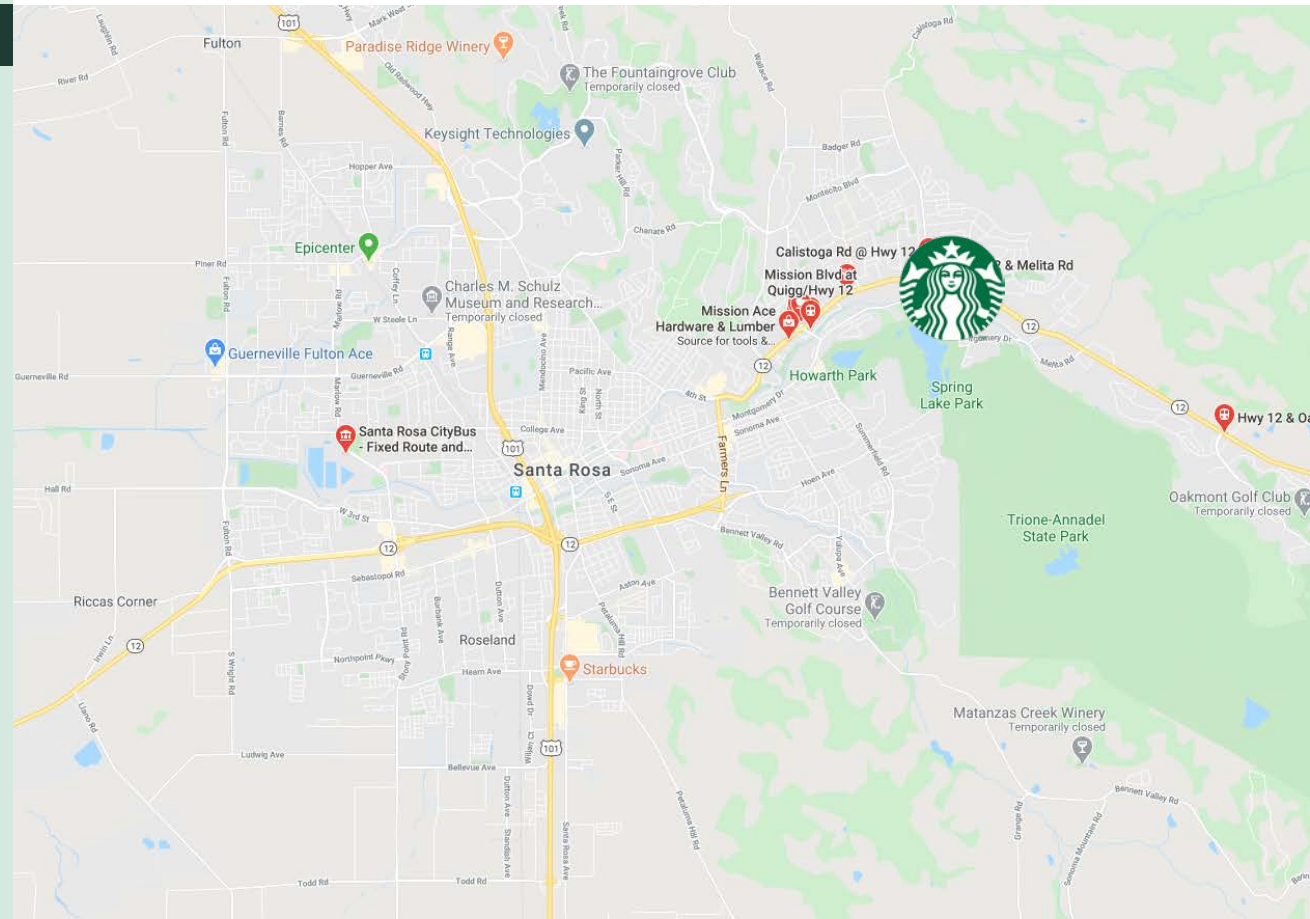
- APPROVED
- APPROVED W/ NOTES
- NEEDS WORK...

|           |      |
|-----------|------|
| SIGNATURE | DATE |
|-----------|------|

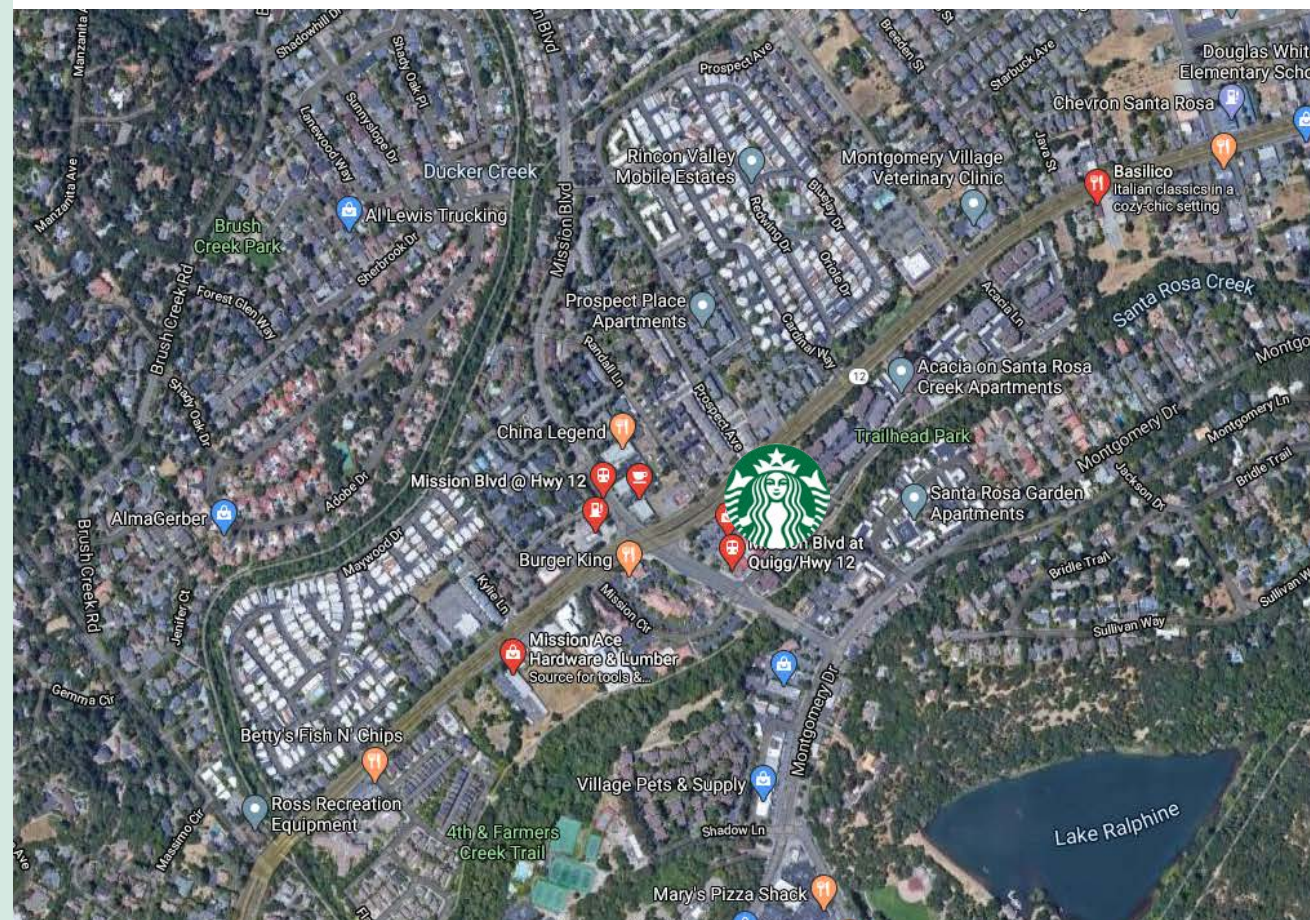


**KEY NOTES**

-  AM TRAFFIC
-  PM TRAFFIC



**REGIONAL MAP**



**VICINITY MAP**



**SITE MAP**

**SITE MAPS**  
 HWY 12 & MISSION

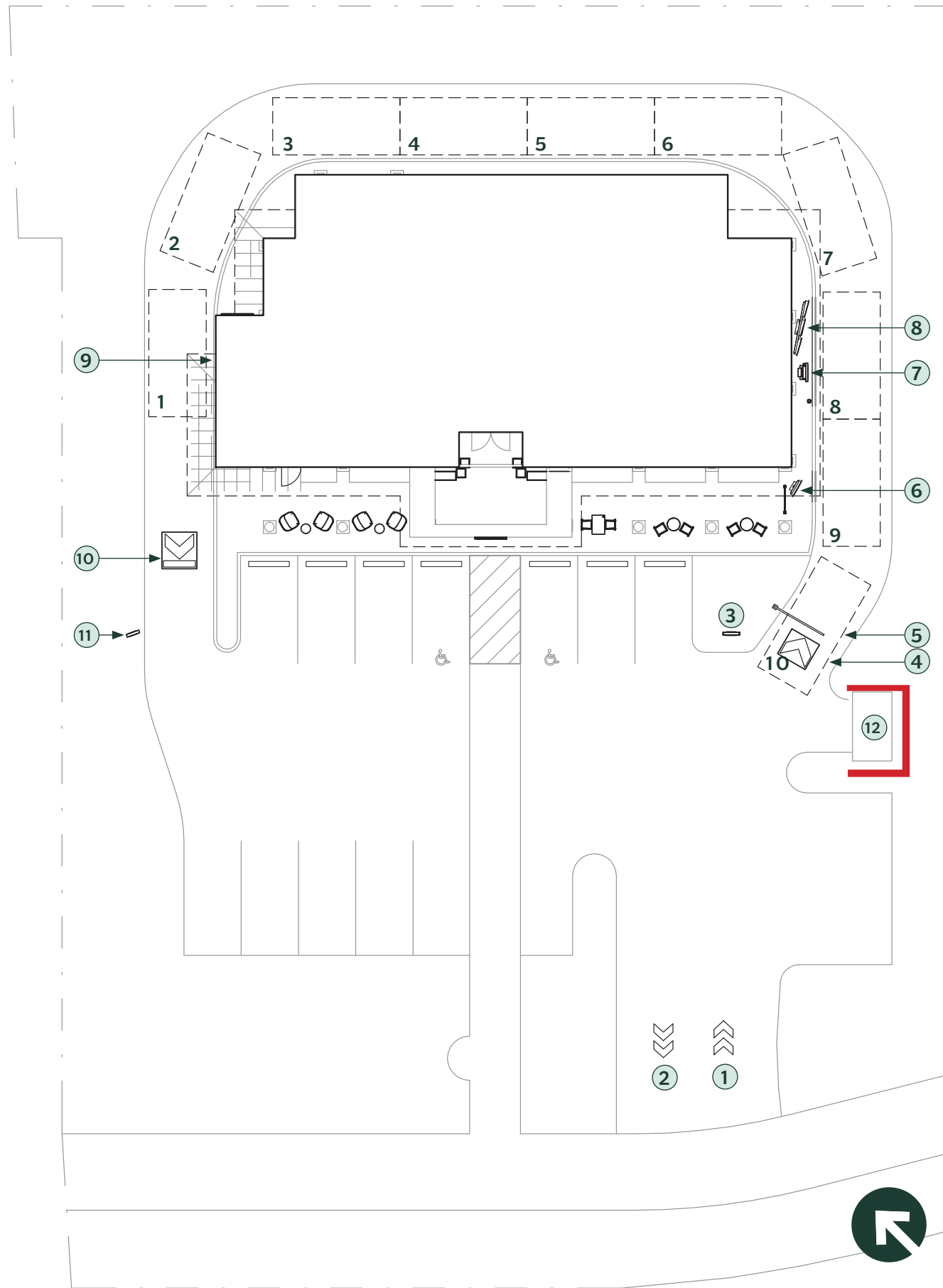
STORE #05778  
 CPN# 06682-056  
 DATE: 08/20/2020



**EXISTING PHOTOS** | STORE #05778  
HWY 12 & MISSION | CPN# 06682-056  
DATE: 08/20/2020

## KEY NOTES

- ① TORCHDOWN WAYFINDING ARROWS - GREEN
- ② TORCHDOWN WAYFINDING ARROWS - WHITE
- ③ ILLUMINATED DT DIRECTIONAL W/ LOGO
- ④ TORCHDOWN WAYFINDING ARROW - ENTRY
- ⑤ CLEARANCE BAR
- ⑥ PRE MENU BOARD
- ⑦ DOS W/ REMOTE CONTROL BOX
- ⑧ WALL MOUNTED 5-PANEL MENU BOARD
- ⑨ DT WINDOW
- ⑩ TORCHDOWN WAYFINDING ARROW - EXIT ARROW
- ⑪ ILLUMINATED DT DIRECTIONAL - THANK YOU/ EXIT ONLY
- ⑫ EXPANDED TRASH ENCLOSURE BY LL. ENCLOSURE TO FIT 4CUBIC YARD TRASH , 4 CUBIC YARD RECYCLING, 4X 95 GALLON CONTAINERS CARTS. TRASH WILL BE EMPTIED 4X WEEK, RECYCLING 4X WEEK.



**SITE PLAN**



**SITE PLAN**



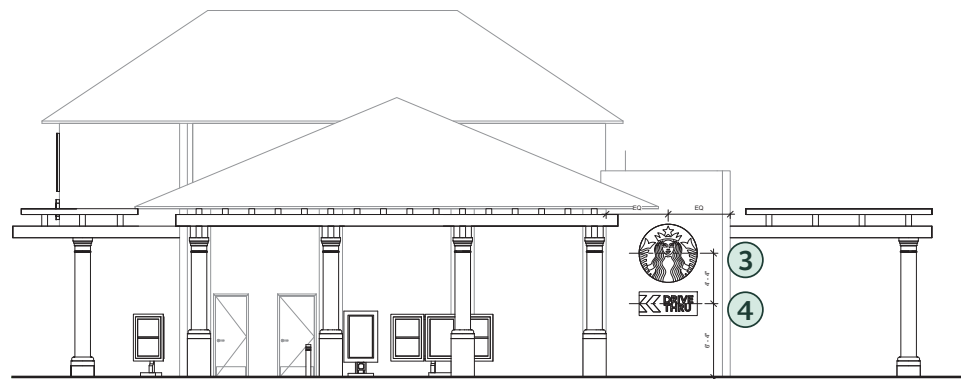
**STREET VIEW** | STORE #05778  
HWY 12 & MISSION | CPN# 06682-056  
DATE: 08/20/2020

# KEY NOTES

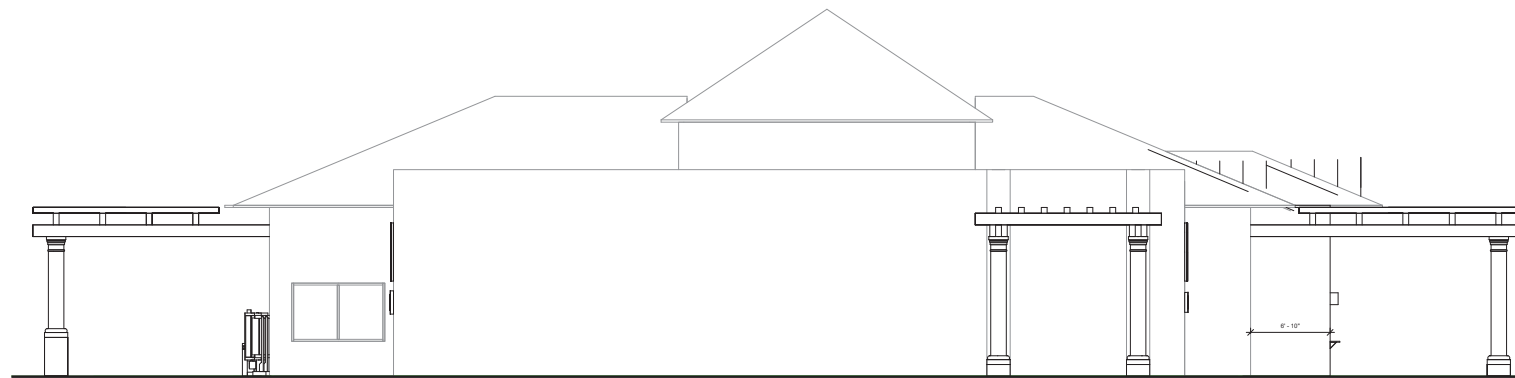
- ① 48IN LOGO DISK
- ② 48IN DT CABINET - RH ARROW
- ③ 60IN LOGO DISK
- ④ 60IN DT CABINET - LH ARROW
- ⑤ 60IN DT CABINET - RH ARROW
- ⑥ (N) STOREFRONT WINDOWS AND DOORS BY LL. REPLACE IN PLACE.



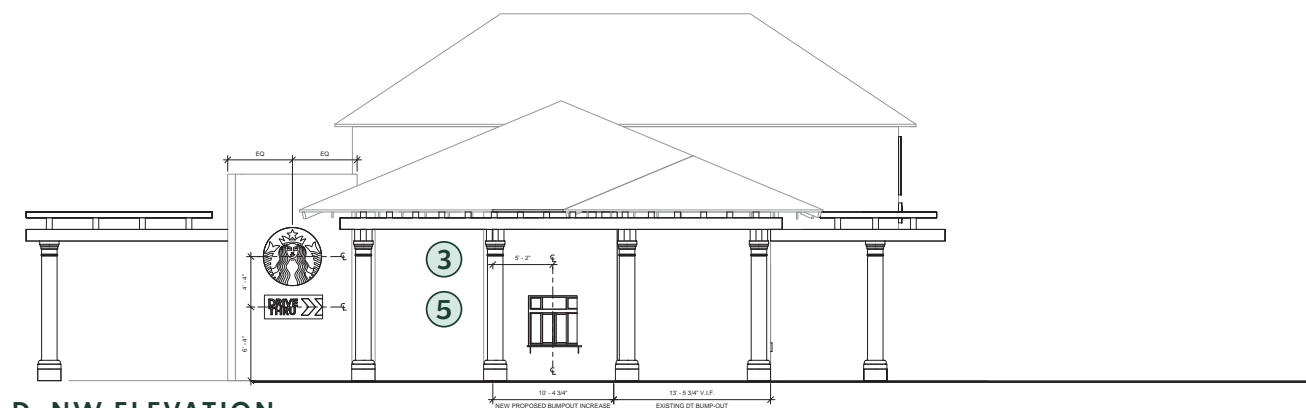
A. SW ELEVATION



B. SE ELEVATION



C. NE ELEVATION



D. NW ELEVATION



KEY PLAN



★ MONUMENT SIGN A



★ MONUMENT SIGN B

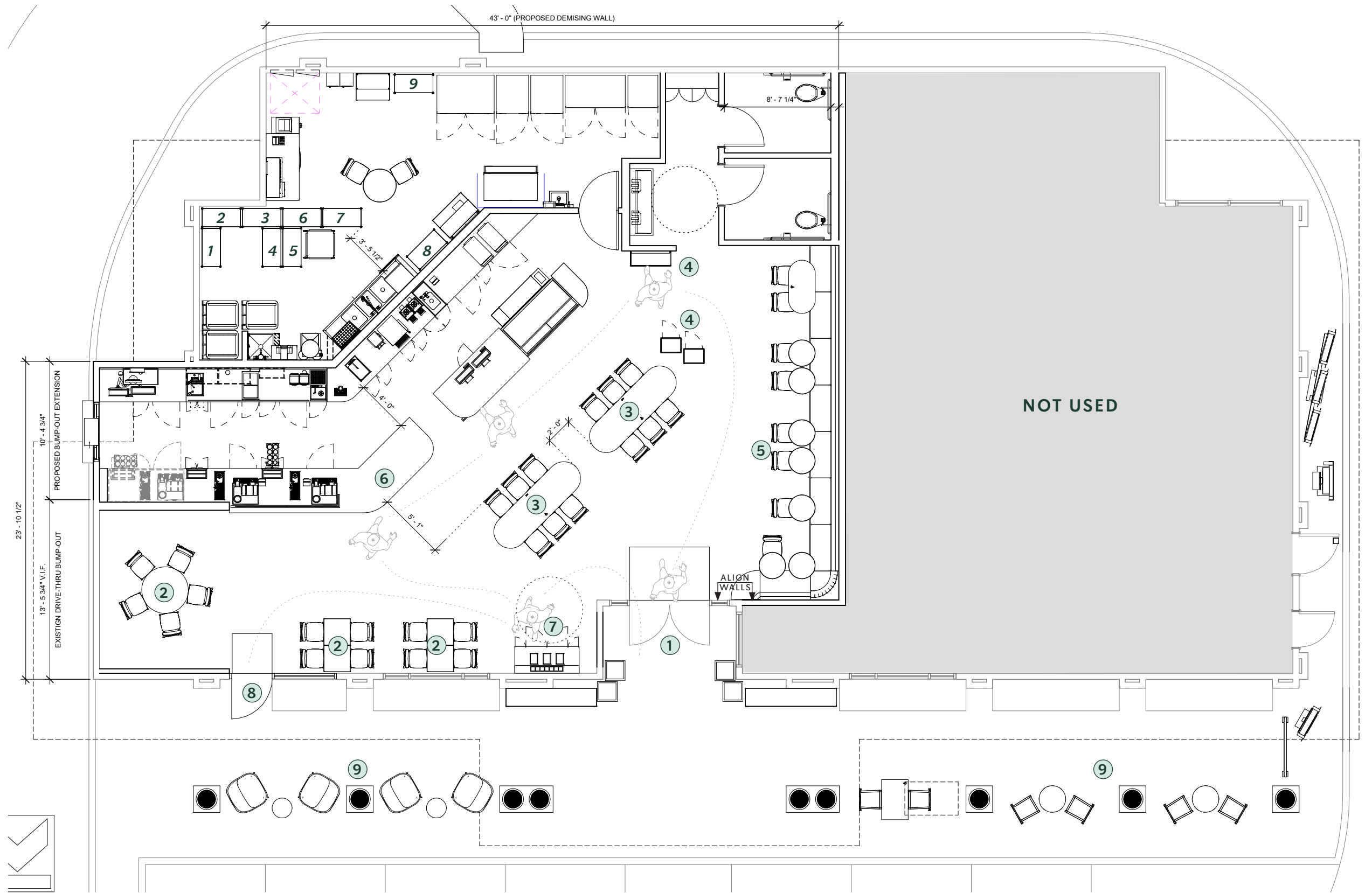
**SIGNAGE** | STORE #05778  
 HWY 12 & MISSION | CPN# 06682-056  
 DATE: 08/20/2020

## KEY NOTES

- ① MAIN ENTRANCE
- ② BAR HT SEATING
- ③ COUNTER HEIGHT SEATING
- ④ MERCH UNITS
- ⑤ BANQUETTE SEATING
- ⑥ HOP/MOP
- ⑦ CONDIMENT CART
- ⑧ 2ND EXIT - EXIT ONLY DOOR
- ⑨ PATIO SEATING

## SEATING

43 INTERIOR SEATS  
10 PATIO SEATS



**PROPOSED FLOOR PLAN - WARMING FORWARD**





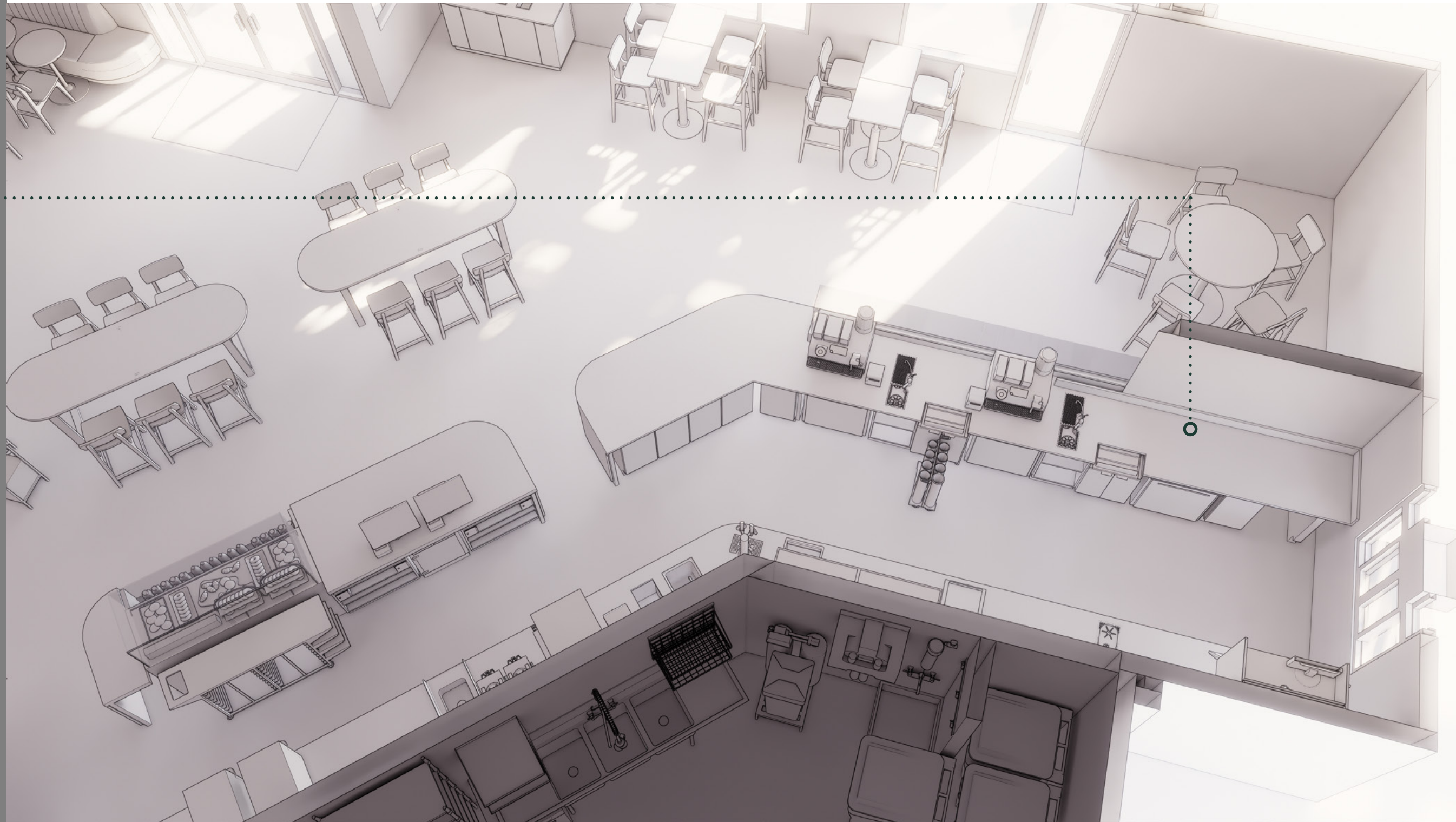
FREESTANDING MERCH UNITS

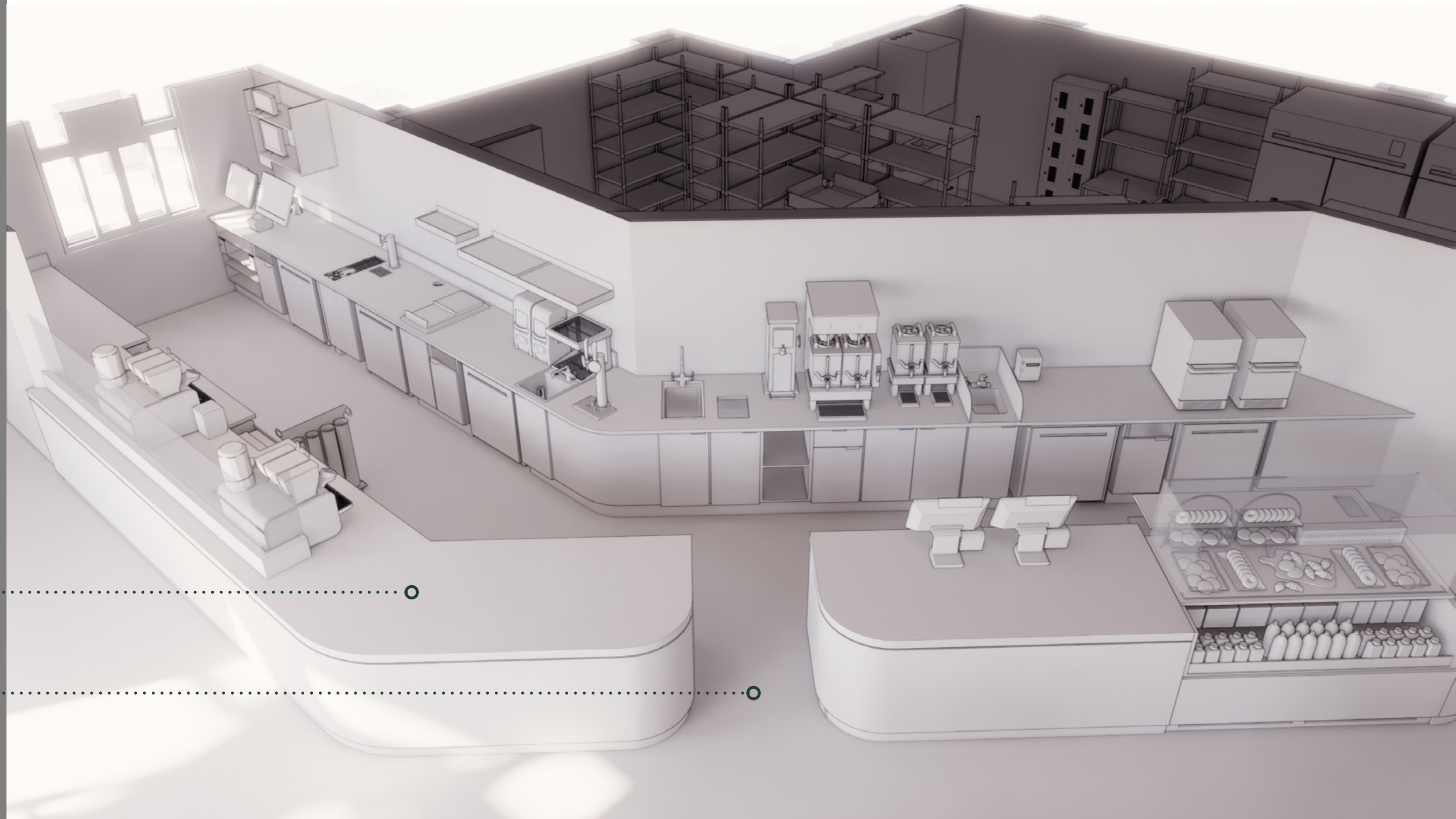
**CAFE DESIGN** | STORE #05778  
HWY 12 & MISSION | CPN# 06682-056  
DATE: 08/20/2020





PREPPED FOR FUTURE THIRD





HOP/MOP

ADDITIONAL ESCAPE FOR  
ESPRESSO AND DT PARTNERS

