

# BENNETT VALLEY SENIOR CENTER, SAMUEL L. JONES HALL HOMELESS SHELTER, & STATE HOMELESS EMERGENCY AID PROGRAM

City Council  
February 12, 2019

David Gouin and Kelli Kuykendall  
Housing and Community Services 1

# Council Request

---

- June 2018 request for study session on the BVSC for homeless services, shelter or safe haven
- HUD safe haven: “form of supportive housing that serves hard-to-reach homeless persons with severe mental illness who come primarily from the streets and have been unable or unwilling to participate in housing or supportive services.”

# Homeless Emergency Aid Program (S-HEAP)

- State releases NOFA, \$500 million block grant
  - September 2018
- Sonoma County CDC submits application to State for \$12.1 million – December 2018
  - Set aside for capital needs requests
  - \$3.6 million for Santa Rosa
- Application due to CDC by February 8, 2019
- Recommendations to Leadership Council  
March 2019

# \$3.6 million S-HEAP Funds

- Based on immediate need to replace roof and Council request for study session on BVSC for homeless services

	Estimated Cost:
<b>Replacement of roof at SJH</b>	<b>\$1.6 million</b>
<b>Activation of navigation center at BVSC to include shelter beds and temporary structures</b>	<b>\$2.0 million</b>
<b>TOTAL</b>	<b>\$3.6 million</b>

# Roof Replacement at SJH

- \$1.6 million estimate – capital
- Amount of S-HEAP funds required for roof replacement pending scope of work and final cost estimates
- Work effort underway
- Summer 2019

# Santa Rosa Navigation Center (SRNC)

- \$2 million – capital & operating
- Phased activation subject to final cost estimates for SJH

	Timeline
<b>Phase I: Relocation of up to 40 beds from SJH to existing facility</b>	<b>Summer 2019</b>
<b>Phase II: Expand BVNC to include temporary structures in parking lot (up to 20 beds)</b>	<b>Fall 2019</b>

# Development of the Site

---

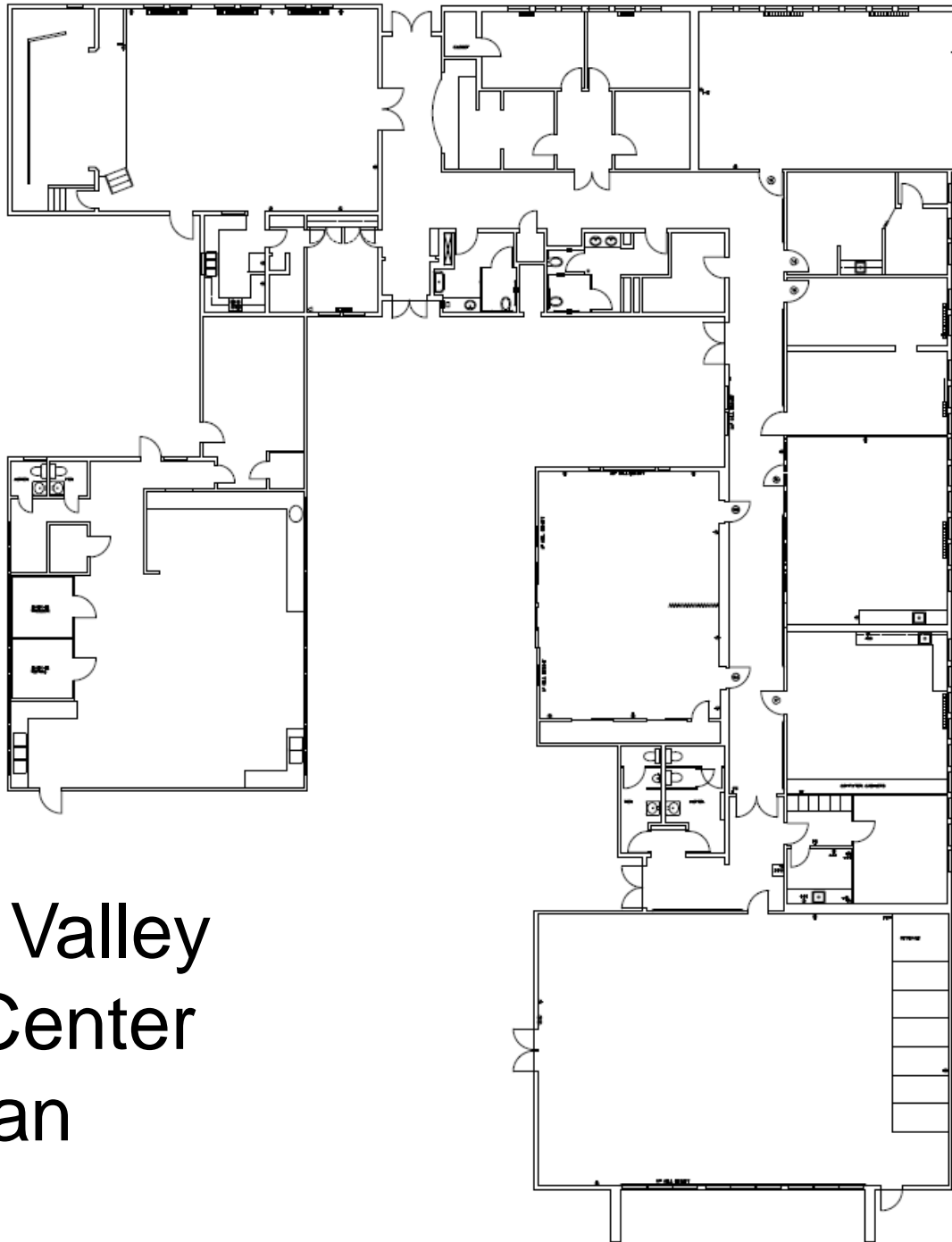
- Request proposals to repurpose the site as permanent supportive housing and/or affordable housing
- Return to Council with draft RFP
- Solicit and select developer
- Selected developer may compete for CDBG-DR multi-family housing funds

# SENIOR CENTER

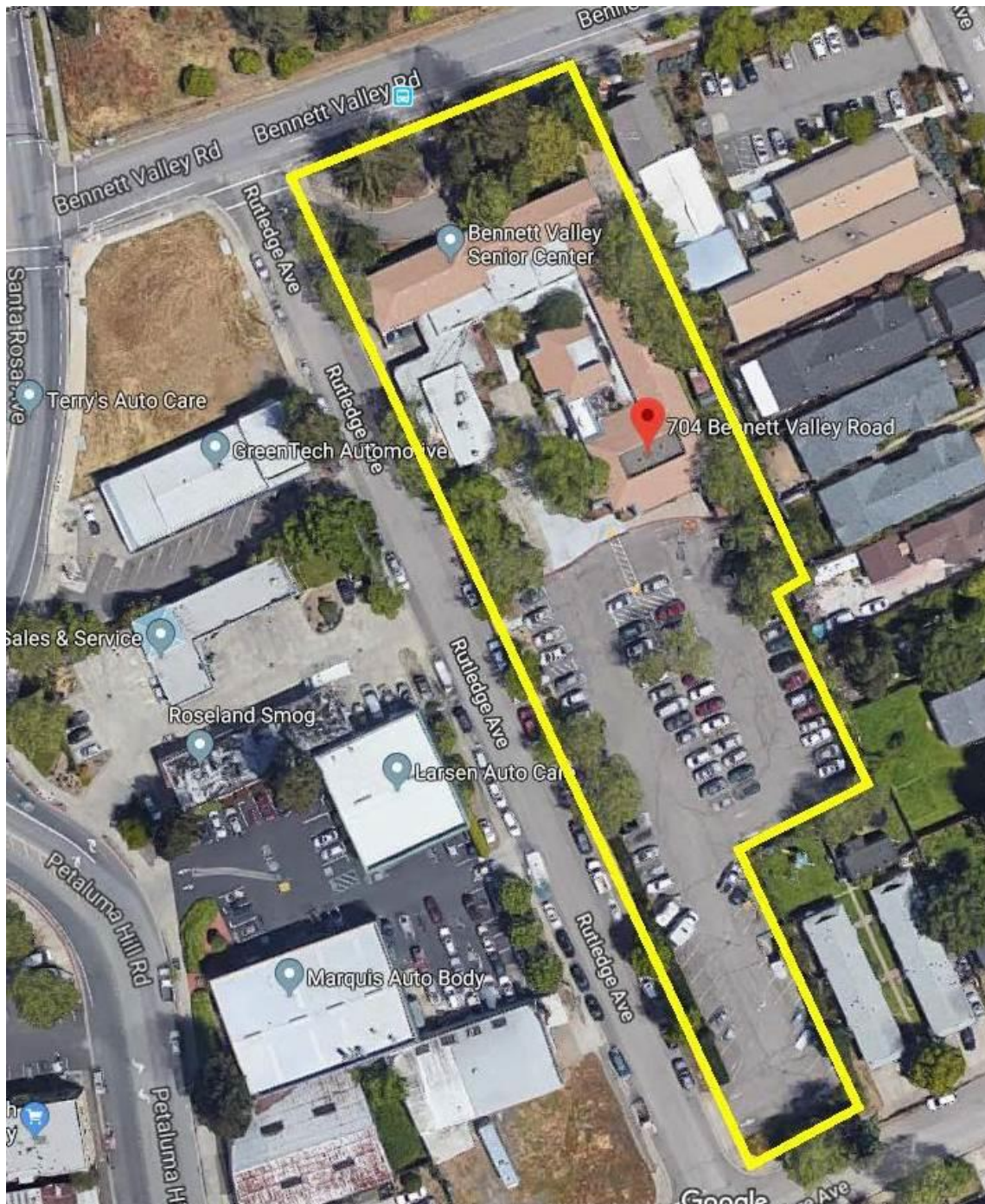
704

704





# Bennett Valley Senior Center Floor Plan



# Santa Rosa Navigation Center

- Low-barrier, housing-focused, smaller scale
- More options to serve persons w/disabilities
- Up to 60 beds – shelter & temp. structures
- 2 year period – S-HEAP funding
- Catholic Charities – Operator
  - Reduction in number of beds at SJH
  - Relocation of SJH clients during construction
  - Continuity of services and economies of scale

# Santa Rosa Navigation Center

- Request for Proposals – Operating
  - Equity
  - Potential to serve range of vulnerable subpopulations
    - Single Adults and Chronically Homeless – SJH
    - Youth, Families, Veterans, Older adults
- Other considerations
  - Sustainability – 2 year S-HEAP funding
  - Permanent Supportive Housing
  - Affordable Housing

## Next steps

---

- Update application to CDC for S-HEAP funds
- Finalize scope of work and cost estimates for SJH
- Return with SRNC contract with Catholic Charities or issue RFP for operator
- Community Meeting
- Return with RFP solicitation to develop the site as permanent supportive housing and/or affordable housing

# Recommendation

- It is recommended by the Housing and Community Services Department that the Council hold a study session to discuss the following:
- 1) potential short-term use of the former Bennett Valley Senior Center (BVSC) for homeless services, including shelter, safe haven, and/or navigation center to be coordinated with Catholic Charities of the Diocese of Santa Rosa in association with the Samuel L. Jones Hall Homeless Shelter (SJH) or independently through another provider;

# Recommendation

- 2) application to the Sonoma County Community Development Commission (CDC), lead agency for the Sonoma County Continuum of Care (Home Sonoma County), for \$3.6 million in State Homeless Emergency Aid Program (S-HEAP) funding for the SJH and BVSC; and
- 3) potential long-term use of the BVSC site for permanent supportive housing and/or affordable housing.