

DEPARTMENT OF TRANSPORTATION
DISTRICT 4
DIVISION OF PROGRAM/PROJECT MANAGEMENT
P.O. BOX 23660, MS- 7A
OAKLAND, CA 94623-0660
PHONE (510) 286-4785
FAX (510) 622-5460
TTY 711
www.dot.ca.gov



*Serious drought.
Help save water!*

January 20, 2016

File: 04-SON-101-PM 20.1, 20.8
Relinquishment No. 56104
Relinquishment No. 56128

Mr. Jason Nutt
Director of Transportation and Public Works
City of Santa Rosa
69 Stony Circle
Santa Rosa, CA 95401

Dear Mr. Nutt:

Attached are the maps entitled "Relinquishment to the City of Santa Rosa" for the City of Santa Rosa to review and comment. The State wishes to relinquish a portion of 3rd Street and a portion of College Avenue, as shown on the attached maps, to the City of Santa Rosa.

The Department is planning to include this relinquishment in the May 2016 CTC Meeting agenda. For convenience, the City may respond to this offer by filling out the attached form. Please return the signed form along with the resolution of the City Council authorizing the City to waive the ninety (90) days' notice of "Intention to Relinquish" requirement by March 15, 2016.

If you have any questions, please call me at (510) 286-4785.

Sincerely,

A handwritten signature in black ink, appearing to read "Eric Schen", written over a circular stamp or seal.

Eric Schen
Project Manager
Project Management – North Bay

Enclosures

- (1) Form (for City consideration)
- (2) Maps- Relinquishment No. 56104
- (3) Maps- Relinquishment No. 56128

STATE OF CALIFORNIA
DEPARTMENT OF TRANSPORTATION
DISTRICT 4
DIVISION OF PROGRAM/PROJECT MANAGEMENT
P.O. BOX 23660, MS-7A
OAKLAND, CA 94623-0660
PHONE (510) 286-4785
FAX (510) 622-5460
TTY (800) 735-2929

04-SON-101-PM 20.1, 20.8
RELINQUISHMENT No. 56104
RELINQUISHMENT No. 56128
January 20, 2016

ATTN: ERIC SCHEN

The City of Santa Rosa has reviewed your offer to accept that portion of State Right of Way to be relinquished as per letter dated January 15, 2016 and attached maps, and:

Please Check One:

- Yes, we are willing to accept the Relinquishment. Please proceed with preparing the final submittal.
- No, we are not interested in accepting the Relinquishment.
(Please list your reasons why)

Please Check One:

- Yes, we agree to waive the ninety (90) days' notice of "Intention to Relinquish" requirement contained in Section 73 of the Streets and Highways Code.
- No, we do not agree to waive the ninety (90) days' notice of "Intention to Relinquish" requirement contained in Section 73 of the Streets and Highway Code.

As the _____ for the City of _____ and having the authority to act on behalf of the City Council, I attest to the above checked items.

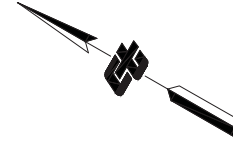
BY: _____

TITLE: _____

DATE: _____

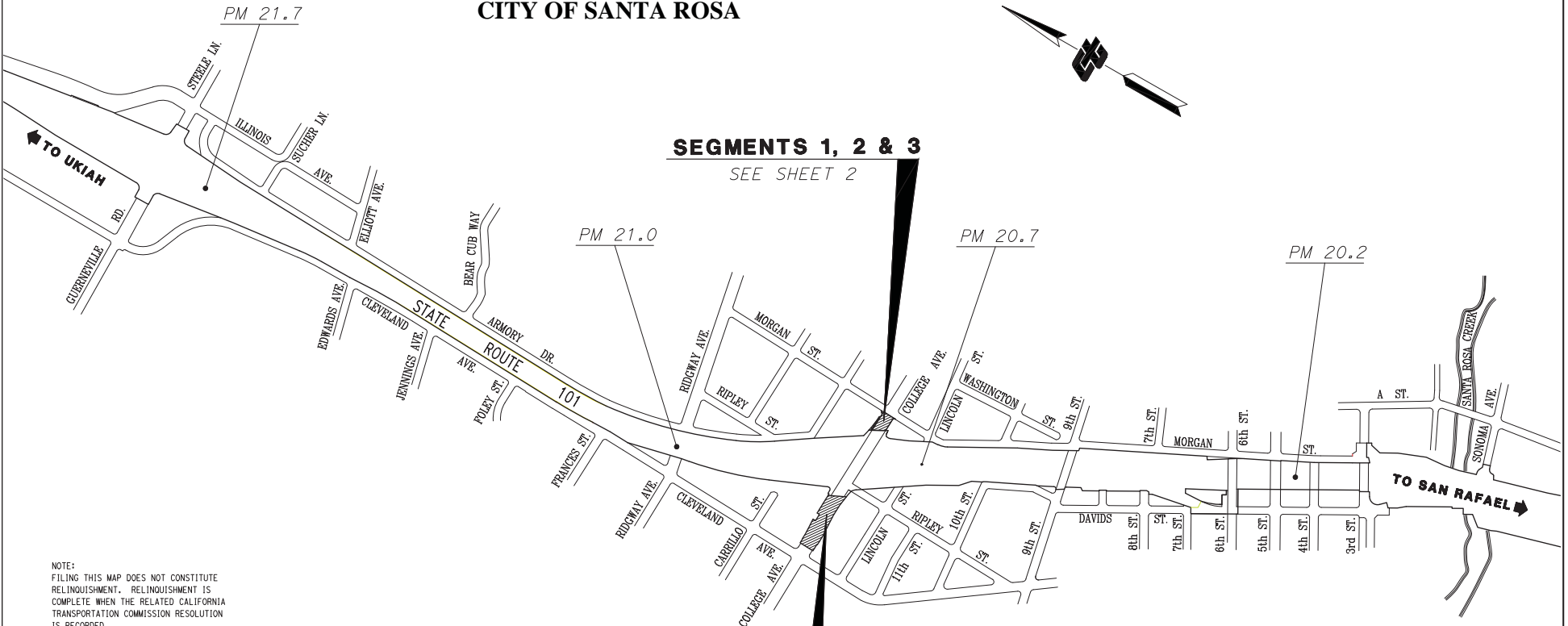
**COUNTY OF SANOMA
CITY OF SANTA ROSA**

NOTE: The State of California or its officers or agents shall not be responsible for the accuracy or completeness of digital images of this map.



SEGMENTS 1, 2 & 3
SEE SHEET 2

SEGMENT 4
SEE SHEET 3



NOTE:
FILING THIS MAP DOES NOT CONSTITUTE
RELINQUISHMENT. RELINQUISHMENT IS
COMPLETE WHEN THE RELATED CALIFORNIA
TRANSPORTATION COMMISSION RESOLUTION
IS RECORDED.

FILED IN THE OFFICE OF THE RECORDER
OF THE COUNTY OF SONOMA.
DATE: _____ PAGE _____
STATE HIGHWAY MAP BOOK SERIAL NO. _____



PROFESSIONAL LAND SURVEYOR
DATE _____

NOTE: The State's rights are not extinguished until recordation of related California Transportation Commission resolution.

STATE OF CALIFORNIA
CALIFORNIA STATE TRANSPORTATION AGENCY
DEPARTMENT OF TRANSPORTATION
**RIGHT OF WAY
RELINQUISHMENT**
REL. NO. 56104
TO THE CITY OF SANTA ROSA
FOR PREVIOUS R/W INFORMATION SEE
MAP(S) A-10259.5, R-48.18 & R-10259.5

M-1585

NO SCALE

LEGEND

Portion to be relinquished

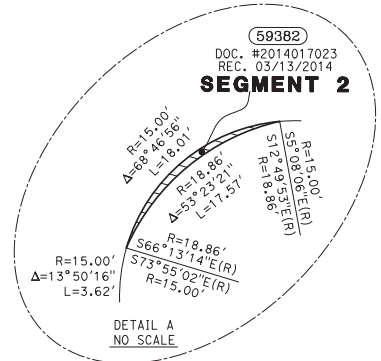
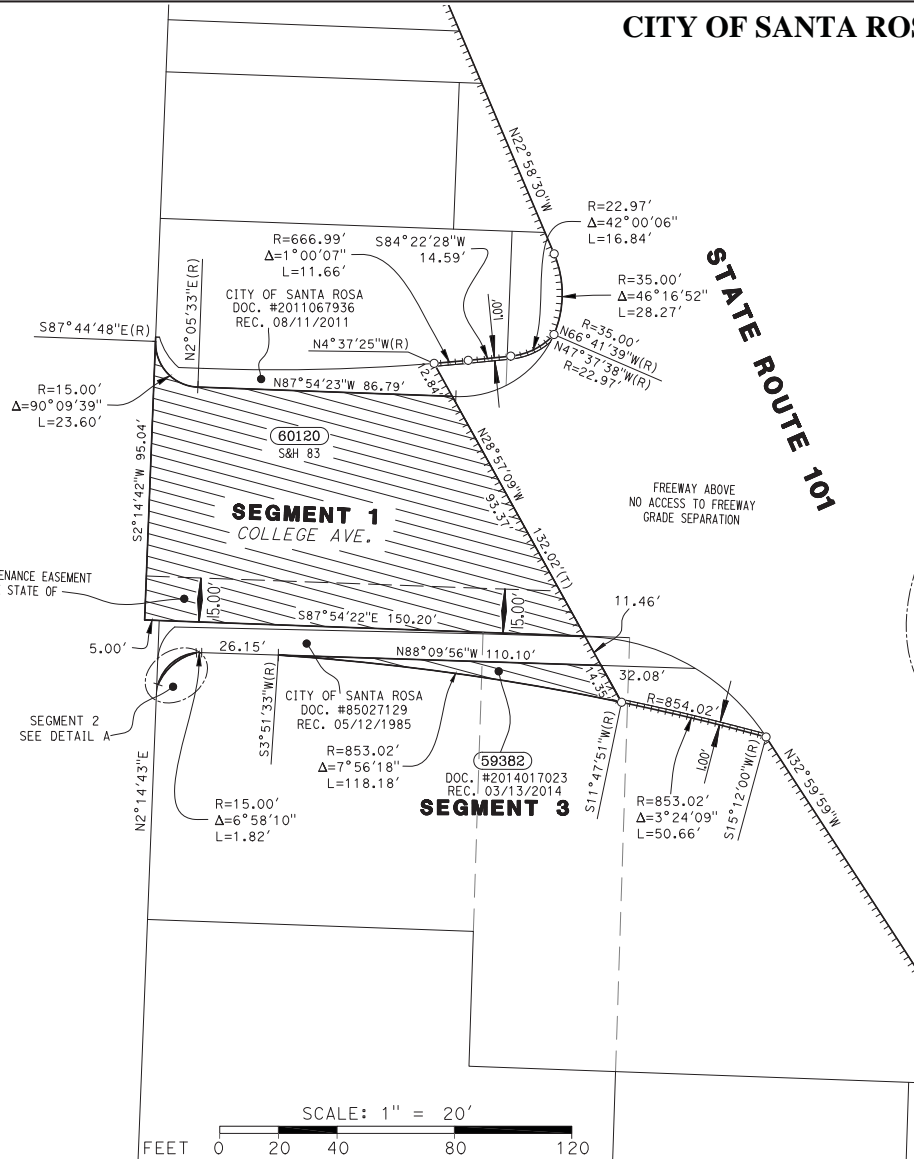
DATE: 12/2015	EA(s): 245442	CONTRACT NO.: 245444			
DRAWN BY: A. ZHONG	CHECKED BY: #####				
DISTRICT	COUNTY	ROUTE	SHEET PM	SHEET NO.	TOTAL SHEETS
04	SON	101	20.8	1	3

PROJECT ID: 040000693

Coordinates and bearings are on CCS 1983, Zone 2, Epoch 1991.35. Distances and stationing are grid distances. Multiply by 1.0000254 to obtain ground distances. All distances are in feet unless otherwise noted.

CITY OF SANTA ROSA

NOTE: The State of California or its officers or agents shall not be responsible for the accuracy or completeness of digital images of this map.



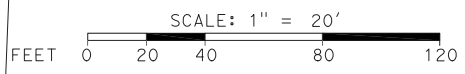
NOTE: The State's rights are not extinguished until recordation of related California Transportation Commission resolution.

STATE OF CALIFORNIA
 CALIFORNIA STATE TRANSPORTATION AGENCY
 DEPARTMENT OF TRANSPORTATION
**RIGHT OF WAY
 RELINQUISHMENT**
REL. NO. 56104
TO THE CITY OF SANTA ROSA
 FOR PREVIOUS R/W INFORMATION SEE
 MAP(S) A-10259.5, R-48.18 & R-10259.5

DATE: 12/2015	EA(s): 245442	CONTRACT NO.: 245444
DRAWN BY: A. ZHONG	CHECKED BY: #####	
DISTRICT: 04	COUNTY: SON	ROUTE: 101
	SHEET PM: 20.8	SHEET NO.: 2
		TOTAL SHEETS: 3

PROJECT ID: 040000693

- LEGEND**
- Access Prohibited
 - Indicates Radial Bearing
 - Indicates calculated point. (Does not imply monument set)
 - Portion to be relinquished
 - S&H 83 Streets and Highways Code Section 83

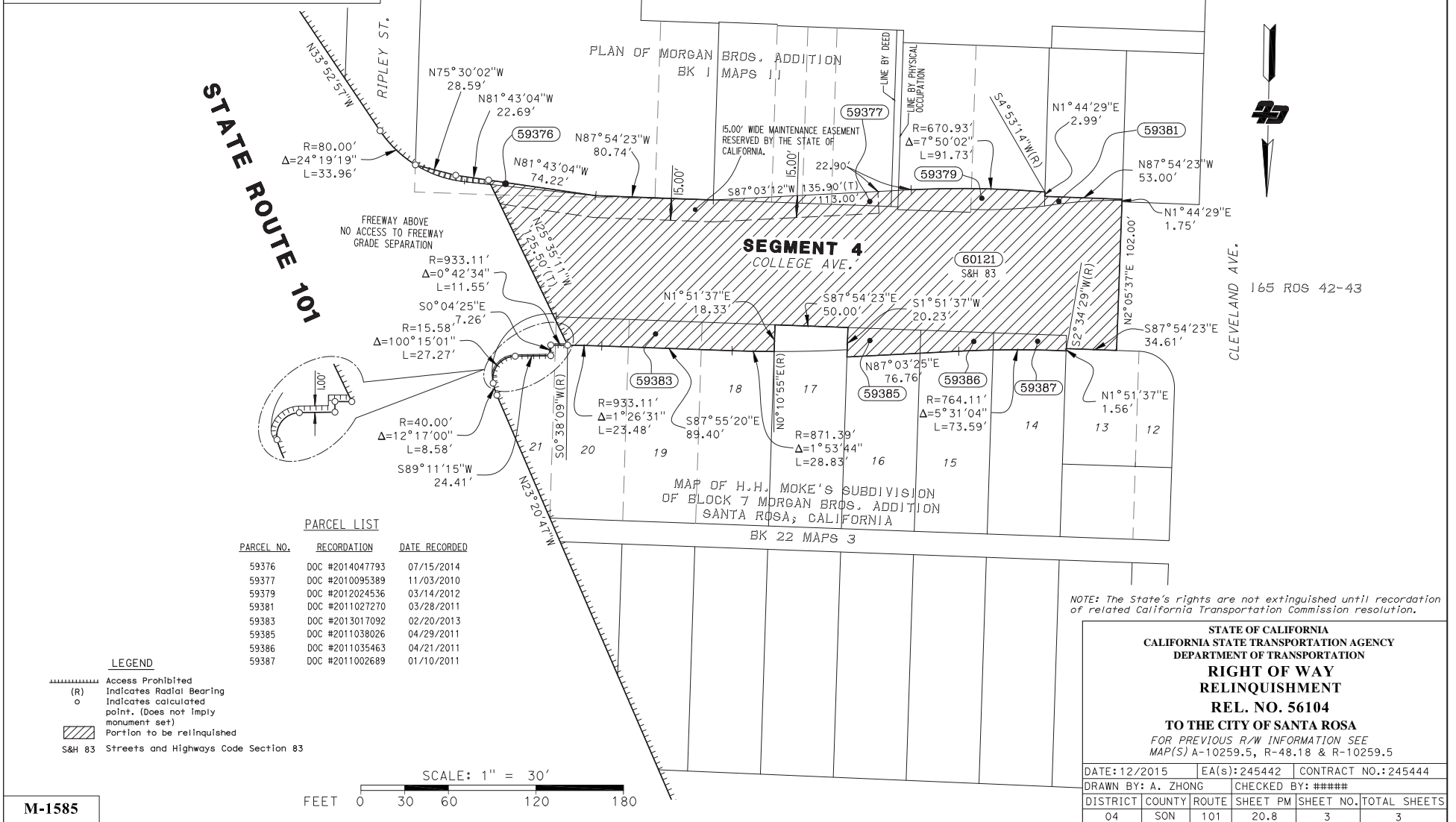


M-1585

Coordinates and bearings are on CCS 1983, Zone 2, Epoch 1991.35. Distances and stationing are grid distances. Multiply by 1.0000254 to obtain ground distances. All distances are in feet unless otherwise noted.

CITY OF SANTA ROSA

NOTE: The State of California or its officers or agents shall not be responsible for the accuracy or completeness of digital images of this map.

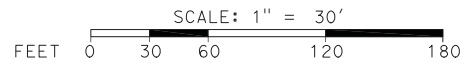


CLEVELAND AVE.
165 ROS 42-43

PARCEL LIST

PARCEL NO.	RECORDATION	DATE RECORDED
59376	DOC #2014047793	07/15/2014
59377	DOC #2010095389	11/03/2010
59379	DOC #2012024536	03/14/2012
59381	DOC #2011027270	03/28/2011
59383	DOC #2013017092	02/20/2013
59385	DOC #2011038026	04/29/2011
59386	DOC #2011035463	04/21/2011
59387	DOC #2011002689	01/10/2011

- LEGEND**
- Access Prohibited
 - Indicates Radial Bearing
 - Indicates calculated point. (Does not imply monument set)
 - Portion to be relinquished
 - S&H 83 Streets and Highways Code Section 83



NOTE: The State's rights are not extinguished until recordation of related California Transportation Commission resolution.

STATE OF CALIFORNIA
CALIFORNIA STATE TRANSPORTATION AGENCY
DEPARTMENT OF TRANSPORTATION
RIGHT OF WAY
RELINQUISHMENT
REL. NO. 56104
TO THE CITY OF SANTA ROSA
 FOR PREVIOUS R/W INFORMATION SEE
 MAP(S) A-10259.5, R-48.18 & R-10259.5

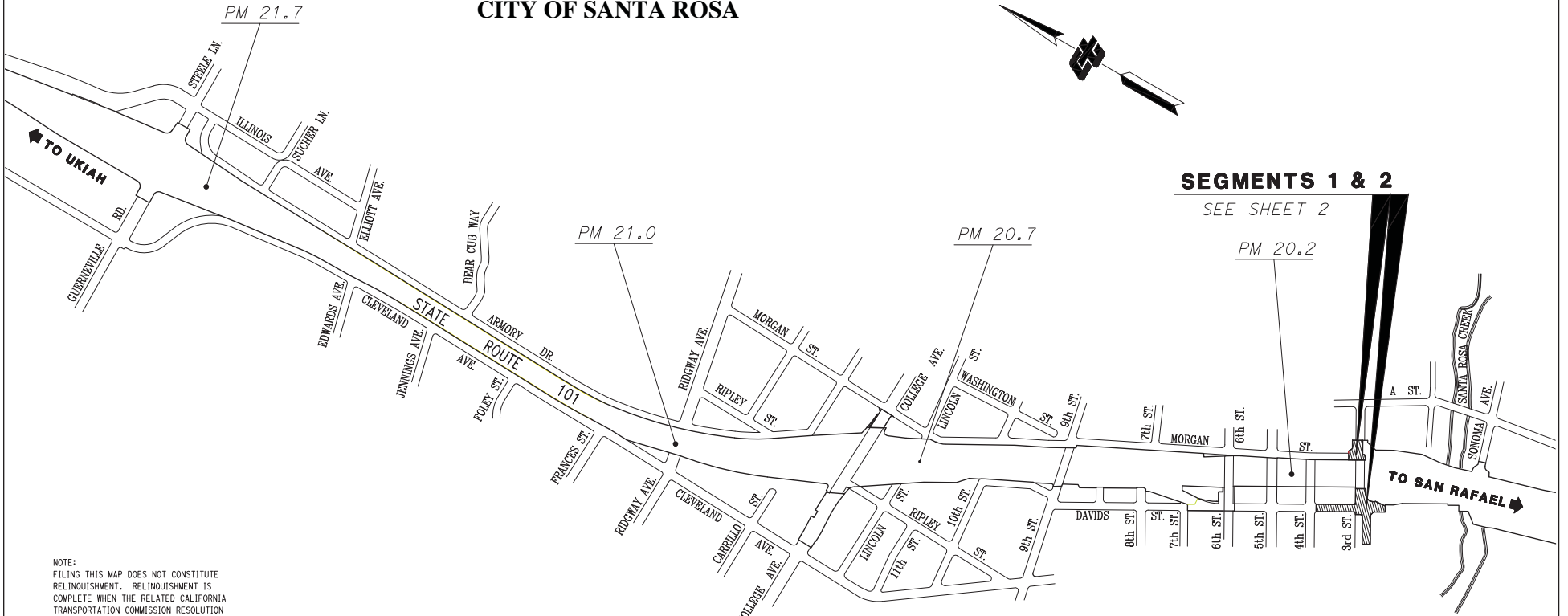
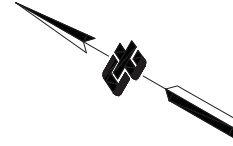
DATE: 12/2015	EA(s): 245442	CONTRACT NO.: 245444
DRAWN BY: A. ZHONG	CHECKED BY: #####	
DISTRICT: 04	COUNTY: SON	ROUTE: 101
SHEET: 20.8	PM: 3	TOTAL SHEETS: 3

M-1585

PROJECT ID: 040000693

**COUNTY OF SANOMA
CITY OF SANTA ROSA**

NOTE: The State of California or its officers or agents shall not be responsible for the accuracy or completeness of digital images of this map.



SEGMENTS 1 & 2

SEE SHEET 2

NOTE:
FILING THIS MAP DOES NOT CONSTITUTE
RELINQUISHMENT. RELINQUISHMENT IS
COMPLETE WHEN THE RELATED CALIFORNIA
TRANSPORTATION COMMISSION RESOLUTION
IS RECORDED.

FILED IN THE OFFICE OF THE RECORDER
OF THE COUNTY OF SONOMA.
DATE: _____
STATE HIGHWAY MAP BOOK PAGE
SERIAL NO. _____



PROFESSIONAL LAND SURVEYOR

DATE

NOTE: The State's rights are not extinguished until recordation of related California Transportation Commission resolution.

STATE OF CALIFORNIA
CALIFORNIA STATE TRANSPORTATION AGENCY
DEPARTMENT OF TRANSPORTATION
**RIGHT OF WAY
RELINQUISHMENT**
REL. NO. 56128
TO THE CITY OF SANTA ROSA
FOR PREVIOUS R/W INFORMATION SEE
MAP(S) A-10259.2, R-48.16 & R-10259.2

LEGEND

Portion to be relinquished

M-1605

NO SCALE

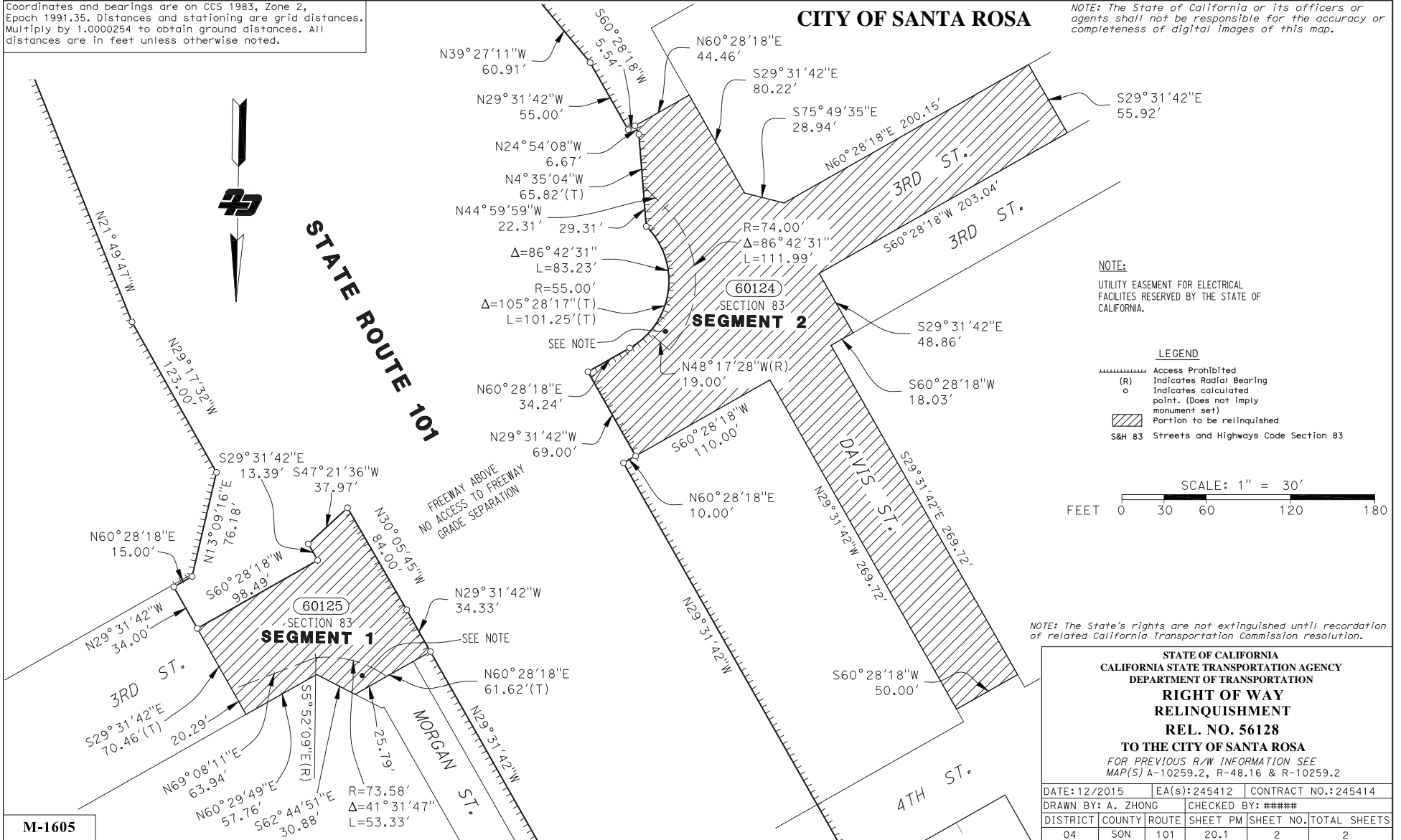
DATE: 12/2015	EA(s): 245412	CONTRACT NO.: 245414			
DRAWN BY: A. ZHONG	CHECKED BY: #####				
DISTRICT	COUNTY	ROUTE	SHEET PM	SHEET NO.	TOTAL SHEETS
04	SON	101	20.1	1	2

PROJECT ID: 040000691

Coordinates and bearings are on CCS 1983, Zone 2, Epoch 1991.35. Distances and stationing are grid distances. Multiply by 1.0000254 to obtain ground distances. All distances are in feet unless otherwise noted.

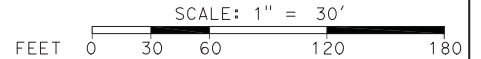
CITY OF SANTA ROSA

NOTE: The State of California or its officers or agents shall not be responsible for the accuracy or completeness of digital images of this map.



NOTE:
UTILITY EASEMENT FOR ELECTRICAL FACILITIES RESERVED BY THE STATE OF CALIFORNIA.

- LEGEND**
- Access Prohibited
 - Indicates Radial Bearing
 - Indicates calculated point. (Does not imply monument set)
 - Portion to be relinquished
 - S&H 83 Streets and Highways Code Section 83



NOTE: The State's rights are not extinguished until recordation of related California Transportation Commission resolution.

**STATE OF CALIFORNIA
CALIFORNIA STATE TRANSPORTATION AGENCY
DEPARTMENT OF TRANSPORTATION
RIGHT OF WAY
RELINQUISHMENT
REL. NO. 56128
TO THE CITY OF SANTA ROSA
FOR PREVIOUS R/W INFORMATION SEE
MAP(S) A-10259.2, R-48.16 & R-10259.2**

DATE: 12/2015	EA(s): 245412	CONTRACT NO.: 245414
DRAWN BY: A. ZHONG	CHECKED BY: #####	
DISTRICT: 04	COUNTY: SON	ROUTE: 101
SHEET NO.: 20.1	SHEET PM: 2	TOTAL SHEETS: 2

M-1605

PROJECT ID: 040000691