

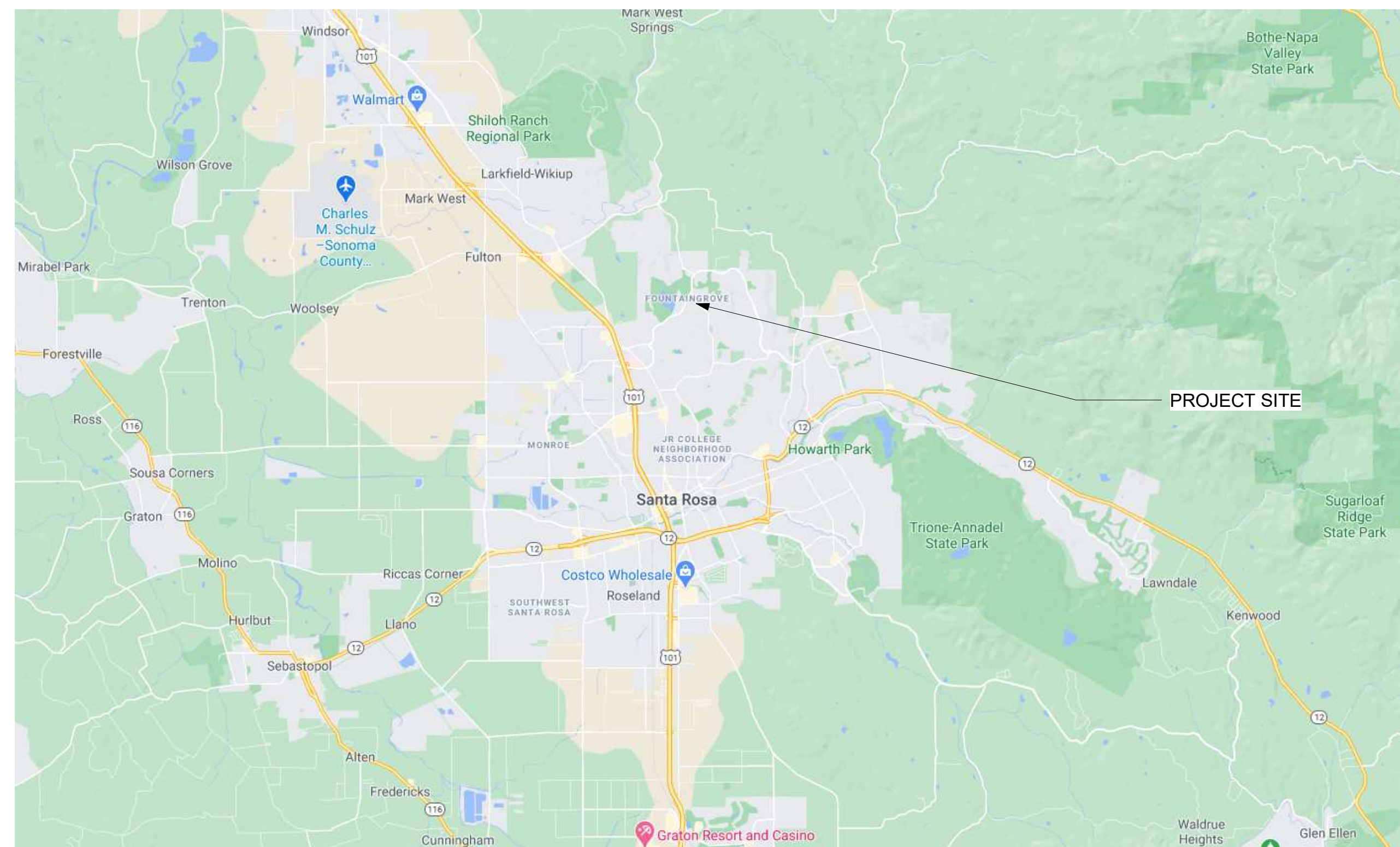


**PRELIMINARY ENGINEERING & ARCHITECTURAL DESIGN SUBMITTAL FOR
THE CITY OF SANTA ROSA FIRE STATION 5 REPLACEMENT
PORTION OF 1400 FOUNTAINGROVE PARKWAY
SANTA ROSA, CA**

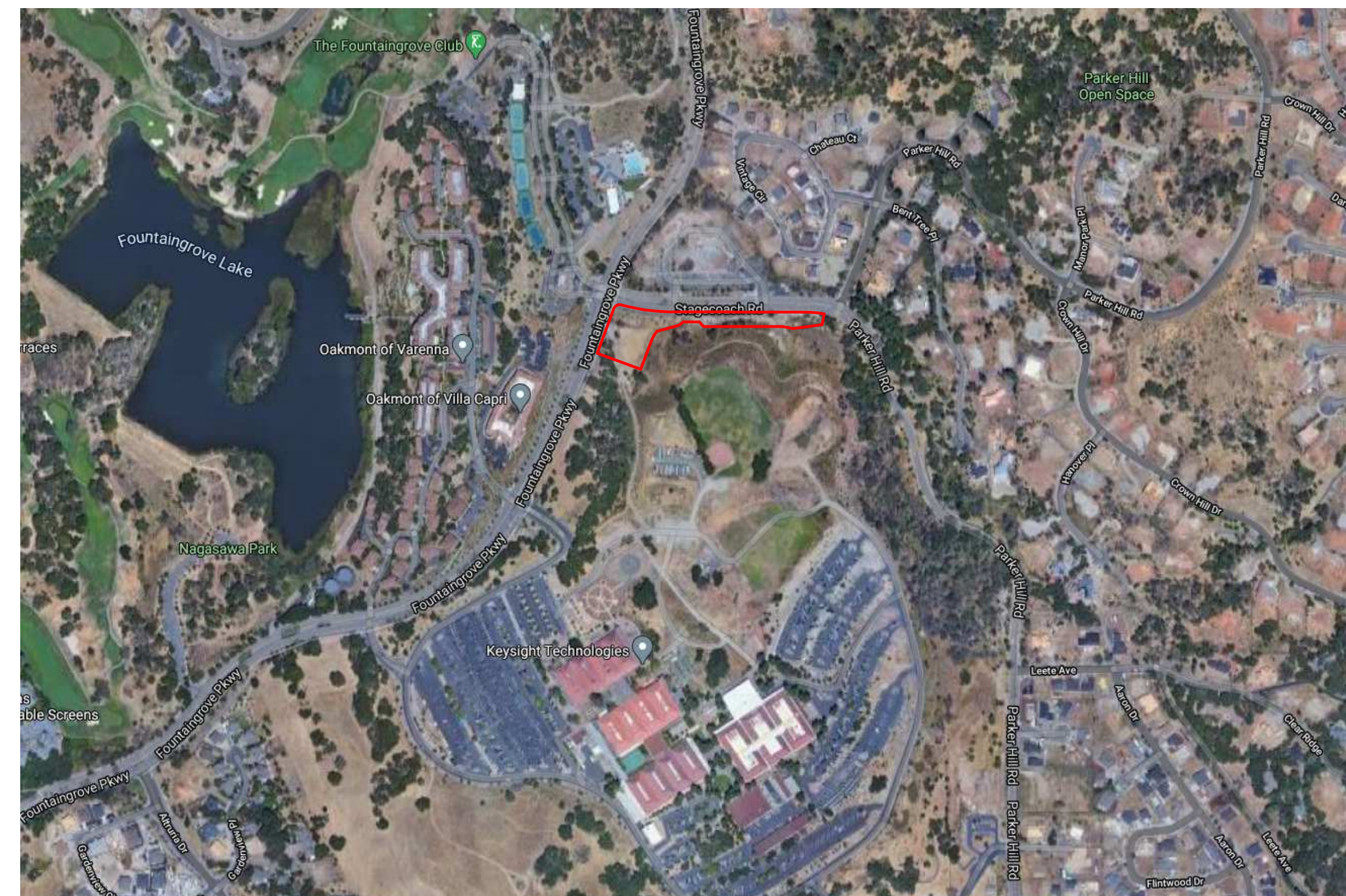
SANTA ROSA FIRE STATION 5
1400 FOUNTAINGROVE PARKWAY
SANTA ROSA, CA

REVISIONS		
No.	Description	Date

VICINITY MAP



PROJECT SITE



SHEET INDEX

01 COVER	
A0.00	COVER SHEET, VICINITY MAP AND PROJECT DIRECTORY
03 CIVIL	
C2.0	GRADING PLAN
C2.1	GRADING PLAN
C4.0	TRUCK TURNING MOVEMENTS
05 ARCH	
A1.10	OVERALL SITE PLAN
A1.11	SITE PLAN - WEST
A1.12	SITE PLAN - EAST
A2.10	FIRST FLOOR PLAN
A2.20	SECOND FLOOR PLAN
A2.30	ROOF PLAN
A3.10	EXTERIOR ELEVATIONS
A3.10a	EXTERIOR ELEVATIONS
A3.11	EXTERIOR ELEVATIONS
A3.11a	EXTERIOR ELEVATIONS
A3.12	EXTERIOR ELEVATIONS
A3.20	3D PROGRAM DIAGRAM

ARCHITECTURE & ENGINEERING DESIGN SUBMITTAL

Sheet Title
COVER SHEET, VICINITY MAP AND PROJECT DIRECTORY

PROJECT DIRECTORY

OWNER City of Santa Rosa 100 Santa Rosa Ave. Santa Rosa, CA 95404 Contact: Lisa Welsh	ARCHITECT RossDrulisCusenbery Architecture 18294 Highway 12 Sonoma, CA 95476 Contact: Mark Zall	GEOTECHNICAL & ENVIRONMENTAL SERVICES Ninyo & Moore 2020 Challenger Drive, Suite 103 Alameda, CA 94501 Contact: Bryan Fong	CIVIL ENGINEER BKF Engineers 200 4th Street, Suite 300 Santa Rosa, CA 95401 Contact: Becky Dower	BIOLOGICAL RESOURCES MIG 800 Hearst Ave. Berkeley, CA 94710 Contact: Ray Pendro	CULTURAL RESOURCES Tom Origer & Associates P.O. Box 1531 Rohnert Park, CA 95927 Contact: Taylor Alshuth	TRANSPORTATION W-Trans 490 Mendocino Ave., Suite 201 Santa Rosa, CA 95401 Contact: Dalene Whitlock
--	--	---	---	--	--	---

APPROVALS

NAME # 1 TITLE	Date
NAME # 1 TITLE	Date
NAME # 1 TITLE	Date

Drawn By Author Checked By Checker

Scale:
As Indicated
Date:
16 FEBRUARY 2021
Project No. Project Number

A0.00
Drawing No.

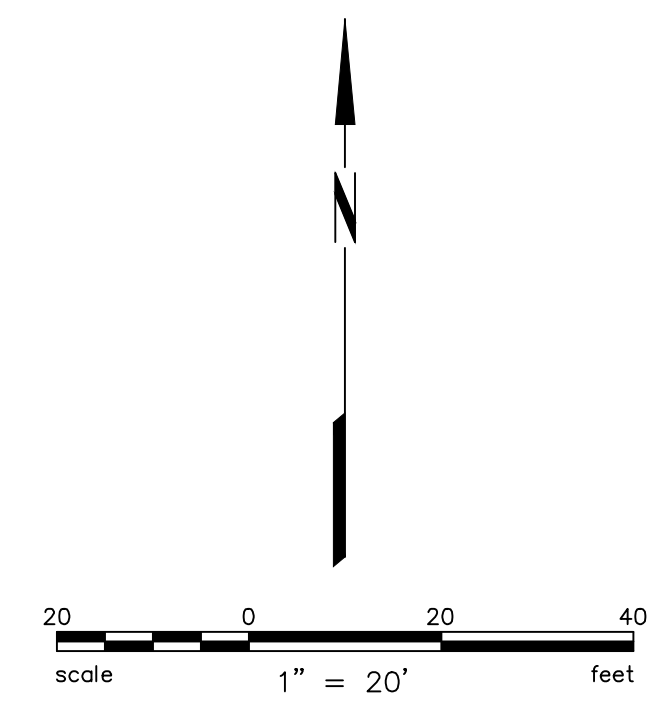
ABBREVIATIONS

± MORE OR LESS	EX EXISTING	SD STORM DRAIN
AC ASPHALT CONCRETE	FDC FIRE DEPARTMENT CONNECTION	SDCO STORM DRAIN CLEAN OUT
APN ASSESSOR'S PARCEL NUMBER	FF FINISHED FLOOR	SDMH STORM DRAIN MANHOLE
BFP BACKFLOW PREVENTER	FG FINISHED GRADE	SS SANITARY SEWER
BLDG BUILDING	FL SURFACE FLOWLINE	SSCO SANITARY SEWER CLEAN OUT
BM BENCHMARK	FS FINISHED SURFACE	STD STANDARD
CO CLEAN OUT	GB GRADE BREAK	TS TOP OF BOX
CONC CONCRETE	GI GRATE INLET	TC TOP FACE OF CURB
CY CUBIC YARD	INV BOTTOM INSIDE OF PIPE	TEL TELECOMMUNICATION LINE
DDC DOUBLE DETECTOR CHECK	IRR IRRIGATION	TG TOP OF GRATE
DT DROP INLET	DW DRIVEWAY	TYP TYPICAL
DW DRIVEWAY	MH MANHOLE	UB UTILITY BOX
E ELECTRIC	OH OVERHEAD UTILITY LINE	VLT VAULT
ELEV ELEVATION	PG&E PACIFIC GAS & ELECTRIC	W WATER
EP EDGE OF PAVEMENT	PIV POST INDICATOR VALVE	WM WATER METER
ESMT EASEMENT	S- SLOPE	

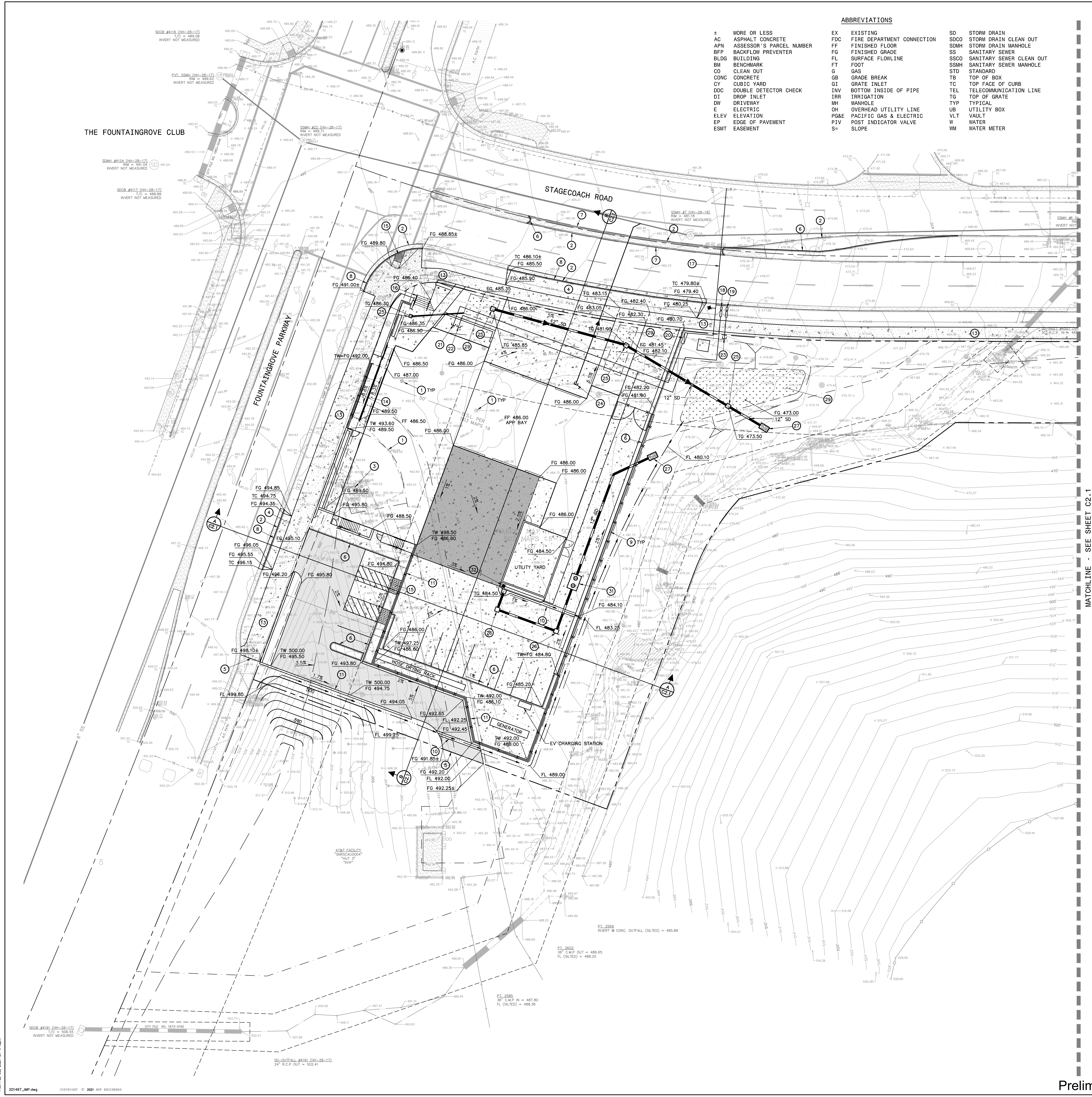
- KEYNOTES:**
- EXISTING MATERIAL OR FEATURE WILL BE REMOVED WITH THIS DEVELOPMENT
 - EXISTING CURB AND GUTTER WILL BE REMOVED WHERE SHOWN ON THIS DRAWING
 - EXISTING UTILITY WILL BE REMOVED WHERE SHOWN ON THIS DRAWING
 - DRIVEWAY APRON
 - CONFORM TO EXISTING SURFACE ELEVATION
 - VERTICAL CONCRETE CURB
 - FLUSH CONCRETE CURB
 - CONCRETE CURB AND GUTTER
 - CURB OPENING
 - CONCRETE VALLEY GUTTER
 - RETAINING WALL
 - AC PEDESTRIAN SIDEWALK
 - CONCRETE PEDESTRIAN SIDEWALK
 - CONCRETE PEDESTRIAN RAMP WITH HANDRAILS
 - PEDESTRIAN CURB RAMP AND DETECTABLE WARNING SURFACE
 - STAIRS AND HANDRAILS
 - COMBINATION FIRE, DOMESTIC AND IRRIGATION WATER SERVICE AND FIRE HYDRANT ASSEMBLY
 - DOMESTIC WATER METER AND BACKFLOW PREVENTER
 - IRRIGATION WATER METER AND BACKFLOW PREVENTER
 - DOUBLE DETECTOR CHECK VALVE
 - FIRE WATER SERVICE CONNECTION
 - DOMESTIC WATER SERVICE CONNECTION
 - IRRIGATION WATER SERVICE CONNECTION
 - SANITARY SEWER SERVICE CONNECTION
 - STORM DRAIN GRATE INLET
 - STORM DRAIN DROP INLET
 - STORM DRAIN OUTFALL
 - STORMWATER BIoretention BASIN
 - SAND OIL SEPARATOR
 - FIRE HYDRANT AND LATERAL ASSEMBLY

SYMBOLS & LEGEND

EXISTING	PROPOSED	
		VALVE
		BACKFLOW PREVENTION DEVICE
		FIRE DEPARTMENT CONNECTION
		FIRE HYDRANT
		POST INDICATOR VALVE
		LIGHT POLE
		STREET SIGN
		STREET LIGHT
		UTILITY POLE
		TREE
		TREE CLUSTER
		TREE TO BE REMOVED
		PROPERTY LINE
		EASEMENT
		CENTERLINE
		GRADE BREAK
		FLOW LINE
		FENCE
		TREE PROTECTION FENCE
		SANITARY SEWER
		STORM DRAIN
		WATER
		OVERHEAD UTILITY LINE
		UNDERGROUND GAS LINE
		UNDERGROUND TELECOM LINE
		ASPHALT
		CONCRETE
		HEAVY WEIGHT CONCRETE
		DETECTABLE WARNING
		BIoretention AREA
		INVERT AT CLEANOUT
		KEYNOTE
		DETAIL IDENTIFICATION
		SHEET WHERE DETAIL IS SHOWN
		CROSS SECTION IDENTIFICATION
		SHEET WHERE CROSS SECTION IS SHOWN



Preliminary Design. Not For Construction Purposes.



PRELIMINARY
 NOT FOR CONSTRUCTION
 DATE: 02/03/2021
 STATE OF CALIFORNIA

**SANTA ROSA
 FIRE
 STATION 5**
 1400 FOUNTAIN GROVE
 PARKWAY
 SANTA ROSA, CA

REVISIONS

No.	Description	Date

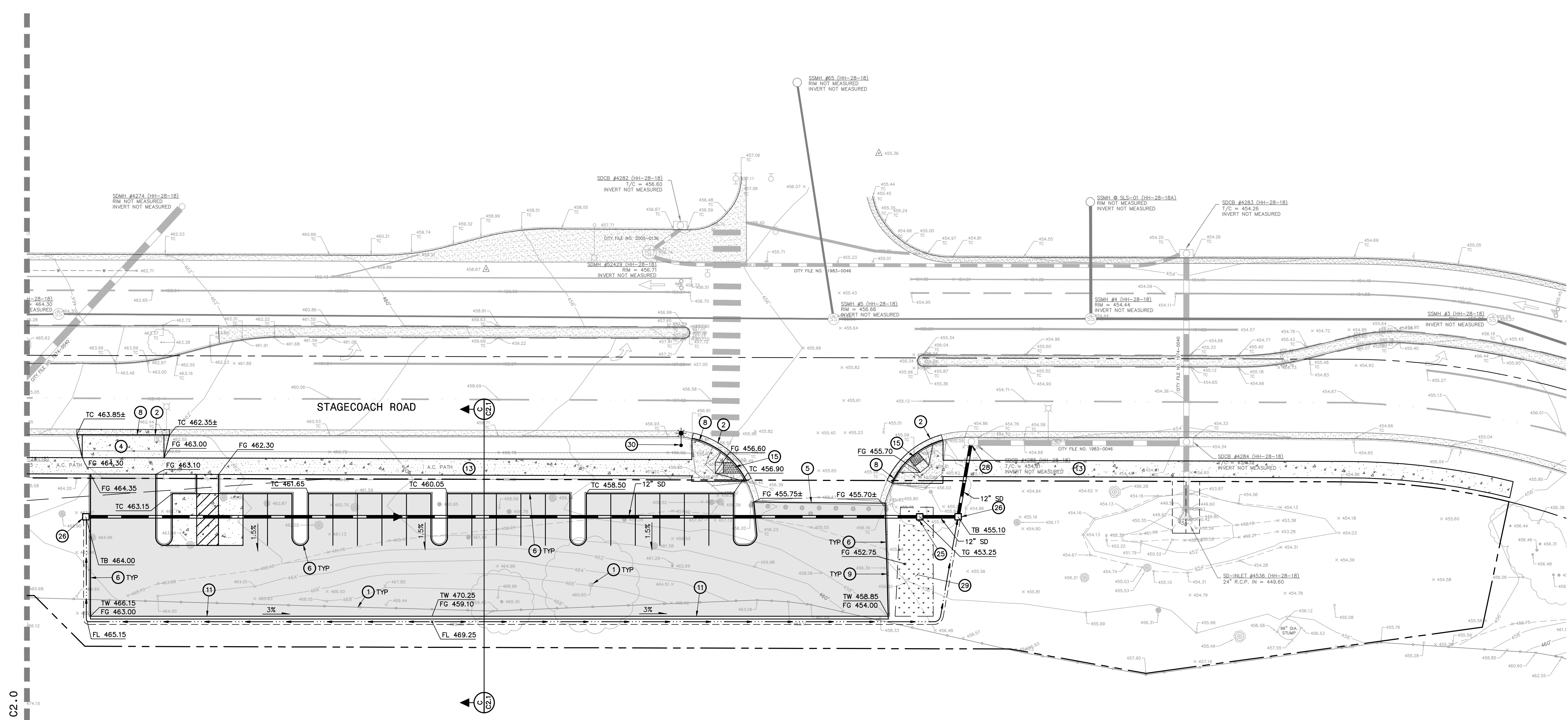
CEQA/NEPA DESIGN SET

Sheet Title
GRADING PLAN

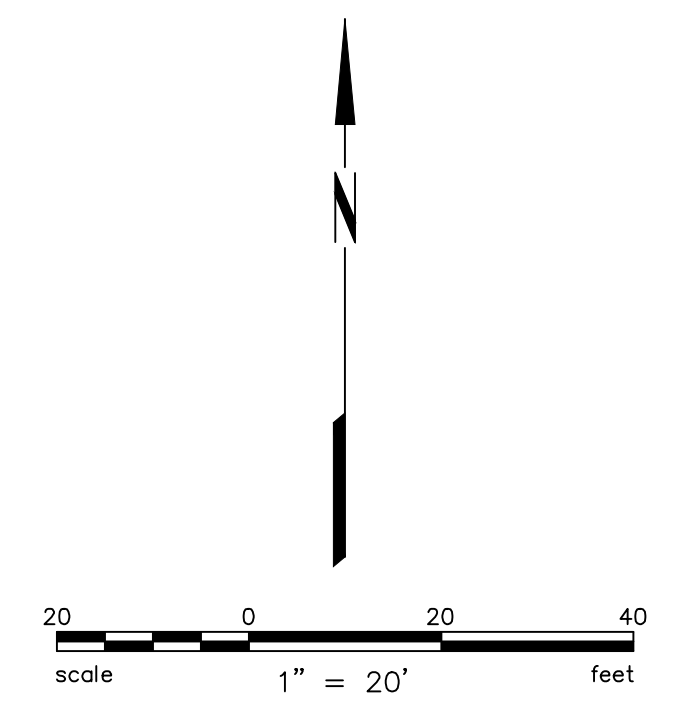
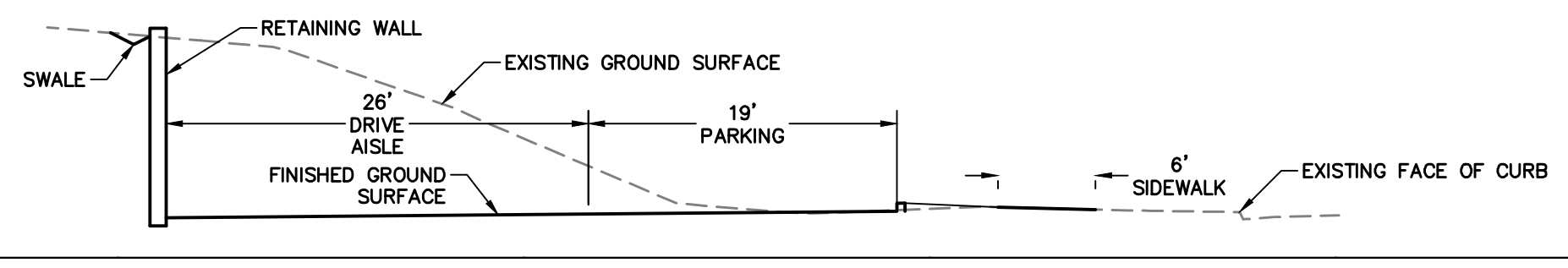
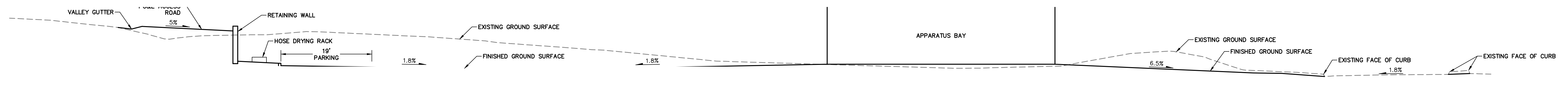
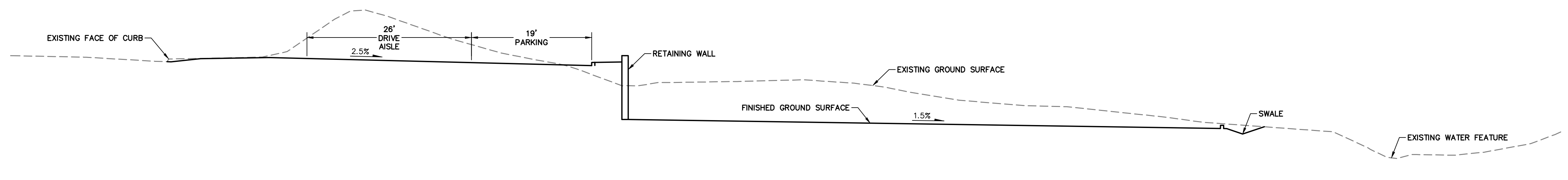
Drawn By: BTL Checked By: BD
 Scale:
 As Shown
 Date:
 3 FEBRUARY 2021
 Project No.: 20201497

C2.1
 Drawing No.

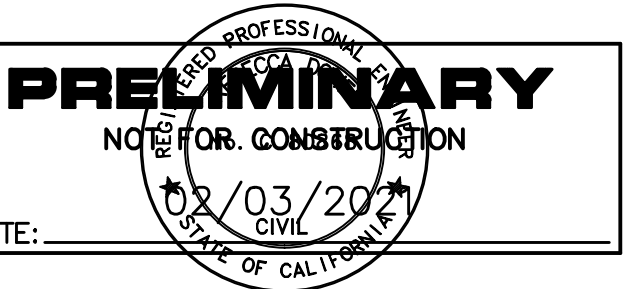
- KEYNOTES:
- ① EXISTING MATERIAL OR FEATURE WILL BE REMOVED WITH THIS DEVELOPMENT
 - ② EXISTING CURB AND GUTTER WILL BE REMOVED WHERE SHOWN ON THIS DRAWING
 - ④ DRIVEWAY APRON
 - ⑤ CONFORM TO EXISTING SURFACE ELEVATION
 - ⑥ VERTICAL CONCRETE CURB
 - ⑧ CONCRETE CURB AND GUTTER
 - ⑨ CURB OPENING
 - ⑪ RETAINING WALL
 - ⑬ CONCRETE PEDESTRIAN SIDEWALK
 - ⑭ PEDESTRIAN CURB RAMP AND DETECTABLE WARNING SURFACE
 - ⑲ STORM DRAIN GRATE INLET
 - ⑳ STORM DRAIN DROP INLET
 - ㉑ STORM DRAIN CONNECTION TO EXISTING CATCH BASIN
 - ㉒ STORMWATER BIORETENTION BASIN
 - ㉓ STREET LIGHT



MATCHLINE - SEE SHEET C2-0



Preliminary Design. Not For Construction Purposes.



**SANTA ROSA
FIRE
STATION 5**
1400 FOUNTAIN GROVE
PARKWAY
SANTA ROSA, CA

REVISIONS

No.	Description	Date

**CEQA/NEPA DESIGN
SET**

Sheet Title
**TRUCK TURNING
MOVEMENTS**

Drawn By: BTL Checked By: BD

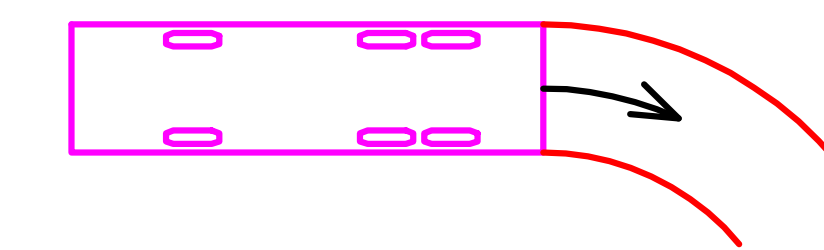
Scale:
As Shown

Date:
3 FEBRUARY 2021

Project No. 20201497

C4.0
Drawing No.

SYMBOLS & LEGEND

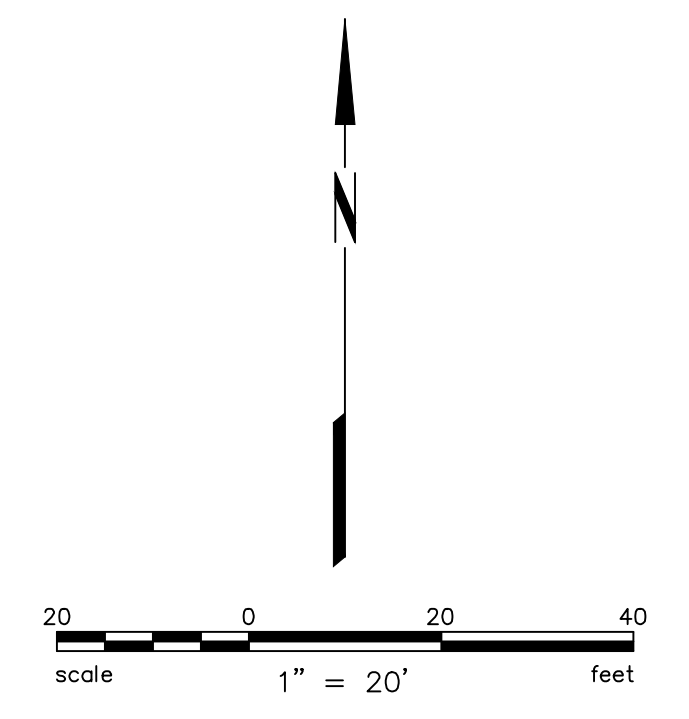
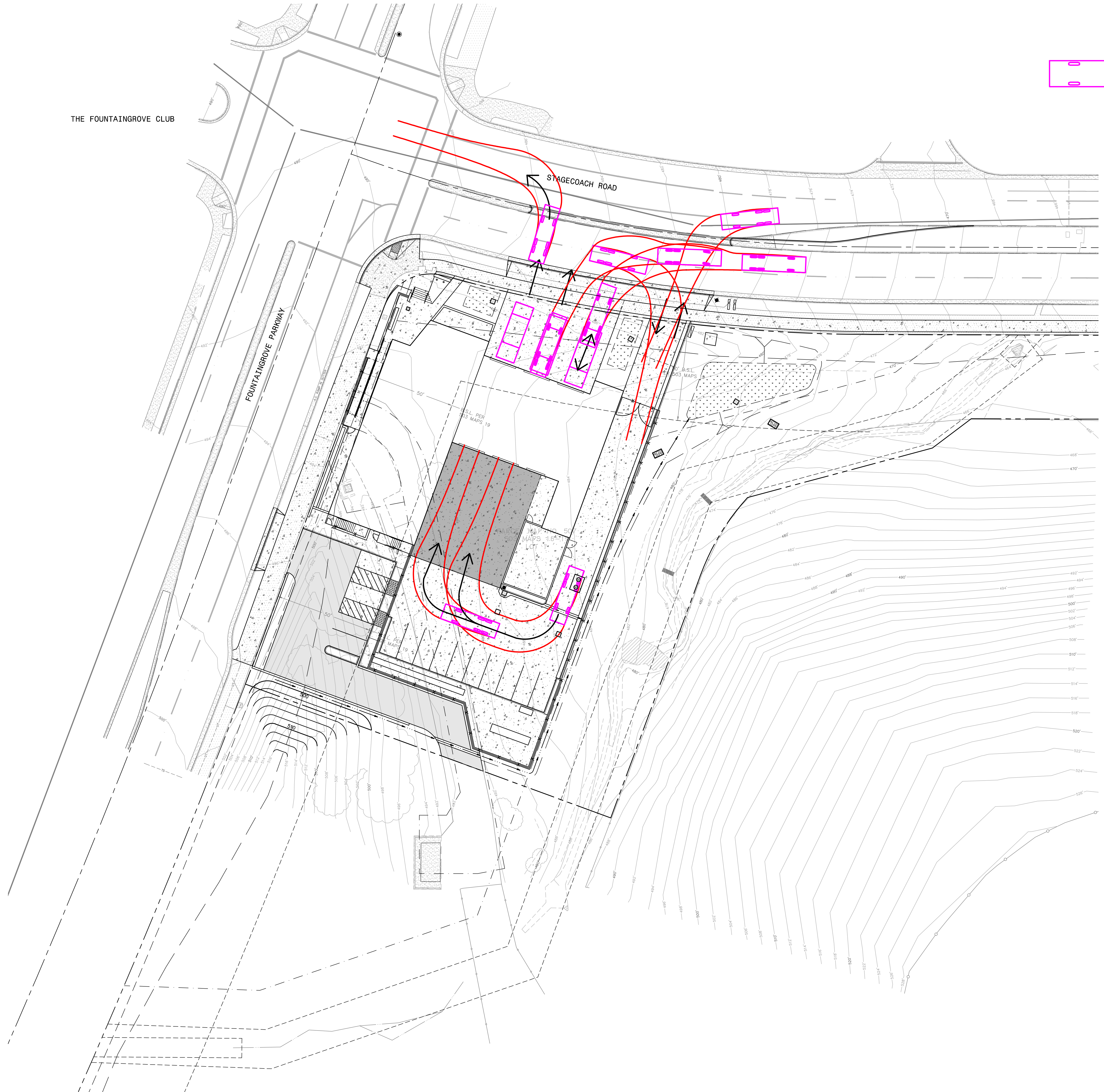


TYPE 1 FIRE ENGINE TURNING TEMPLATE

THE FOUNTAIN GROVE CLUB

STAGECOACH ROAD

FOUNTAIN GROVE PARKWAY

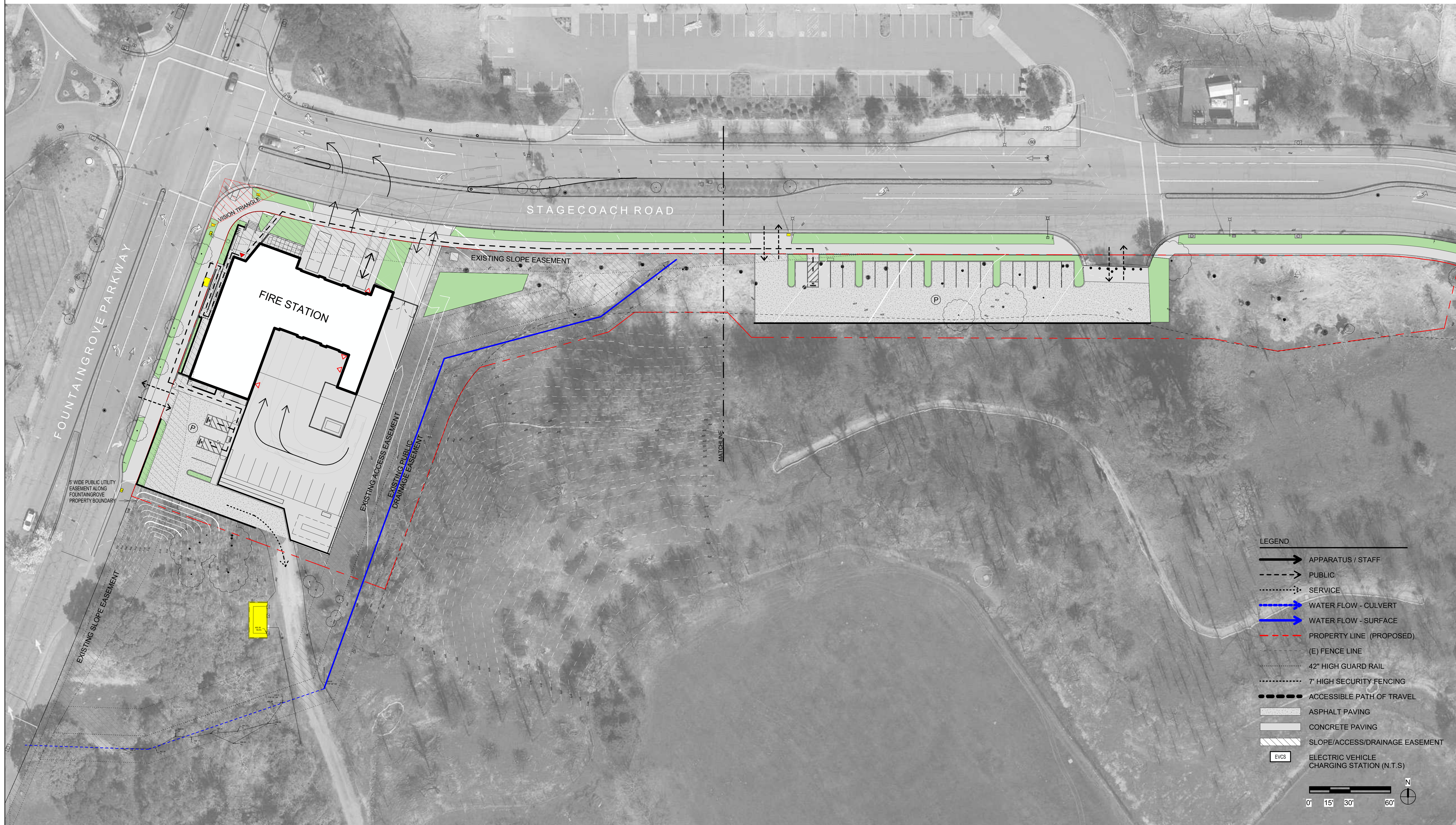


SANTA ROSA FIRE STATION 5
1400 FOUNTAIN GROVE PARKWAY
SANTA ROSA, CA

REVISIONS		
No.	Description	Date

ARCHITECTURE & ENGINEERING DESIGN SUBMITTAL

Sheet Title
OVERALL SITE PLAN



LEGEND

- APPARATUS / STAFF
- - - PUBLIC
- · · · · SERVICE
- WATER FLOW - CULVERT
- WATER FLOW - SURFACE
- - - PROPERTY LINE (PROPOSED)
- - - (E) FENCE LINE
- - - 42" HIGH GUARD RAIL
- - - 7' HIGH SECURITY FENCING
- - - ACCESSIBLE PATH OF TRAVEL
- ASPHALT PAVING
- CONCRETE PAVING
- SLOPE/ACCESS/DRAINAGE EASEMENT
- EVCS
- ELECTRIC VEHICLE CHARGING STATION (N.T.S)

0' 15' 30' 60' N

1 OVERALL SITE PLAN
1" = 30'-0"

Drawn By Author Checked By Checker

Scale:
As indicated

Date:
16 FEBRUARY 2021

Project No. Project Number

A1.10
Drawing No.

SANTA ROSA FIRE STATION 5
1400 FOUNTAIN GROVE PARKWAY
SANTA ROSA, CA

REVISIONS

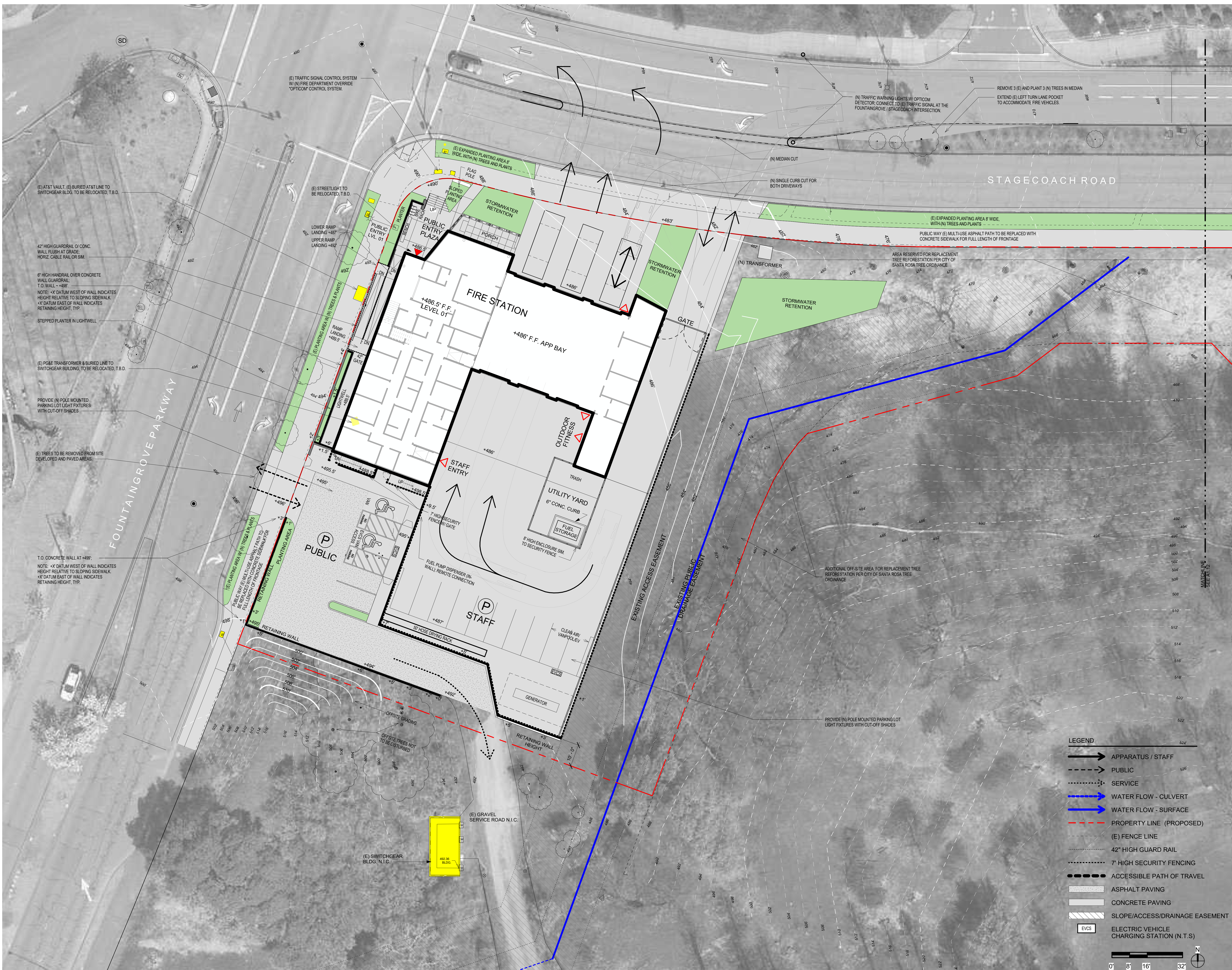
No.	Description	Date

ARCHITECTURE & ENGINEERING DESIGN SUBMITTAL

Sheet Title
SITE PLAN - WEST

Drawn By Author Checked By Checker
Scale: As Indicated
Date: 16 FEBRUARY 2021
Project No. Project Number

A1.11
Drawing No.



1 SITE PLAN - WEST
1/16" = 1'-0"

Preliminary Design. Not For Construction Purposes.

If this drawing is not 30" x 42", it is a reduced print - scale accordingly. All rights reserved. Material may not be reproduced in any form without permission from RossDrulisCusenbery Architecture, Inc.

SANTA ROSA FIRE STATION 5
1400 FOUNTAIN GROVE PARKWAY
SANTA ROSA, CA

REVISIONS		
No.	Description	Date

ARCHITECTURE & ENGINEERING DESIGN SUBMITTAL

Sheet Title
SITE PLAN - EAST

Drawn By Author Checked By Checker

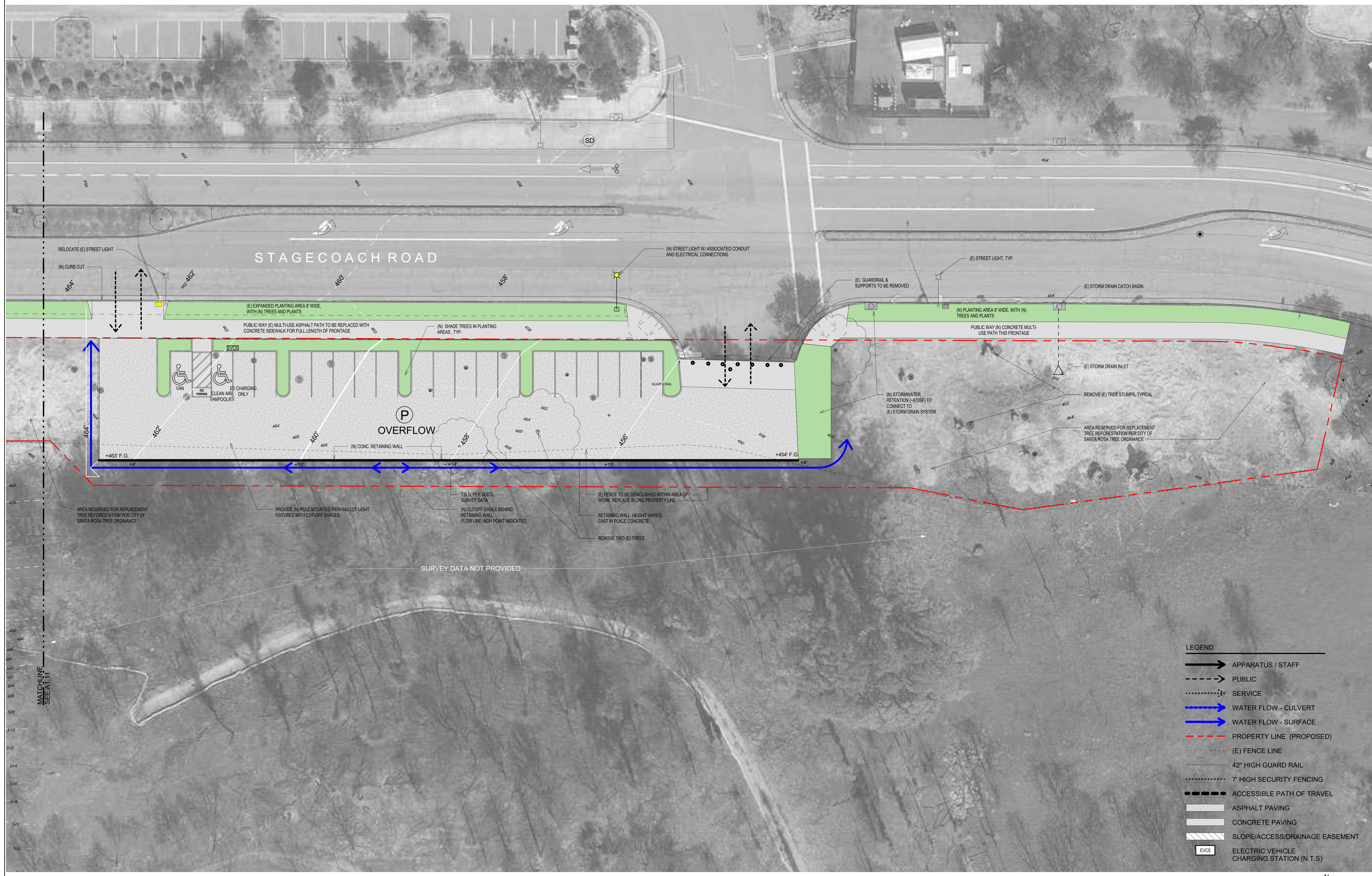
Scale:
As Indicated

Date:
16 FEBRUARY 2021

Project No. Project Number

A1.12
Drawing No.

If this drawing is not 30" x 42", it is a reduced print - scale accordingly. All rights reserved. Material may not be reproduced in any form without permission from RossDrulisCusenbery Architecture, Inc.



① SITE PLAN - EAST
1/16" = 1'-0"

SANTA ROSA FIRE STATION 5
1400 FOUNTAIN GROVE PARKWAY
SANTA ROSA, CA

REVISIONS

No.	Description	Date

ARCHITECTURE & ENGINEERING DESIGN SUBMITTAL

Sheet Title
FIRST FLOOR PLAN

Drawn By Author Checked By Checker

Scale:
1/8" = 1'-0"

Date:
16 FEBRUARY 2021

Project No. Project Number

A2.10

Drawing No.

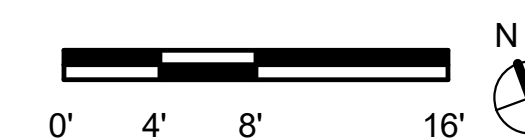
If this drawing is not 30" x 42", it is a reduced print - scale accordingly. All rights reserved. Material may not be reproduced in any form without permission from RossDrulisCusenbery Architecture, Inc.



1 LEVEL ONE FLOOR PLAN
1/8" = 1'-0"

GROSS FLOOR AREA

LEVEL 01 8,889sf
LEVEL 02 1,874sf
TOTAL 10,763sf



SANTA ROSA FIRE STATION 5
1400 FOUNTAIN GROVE PARKWAY
SANTA ROSA, CA

REVISIONS

No.	Description	Date

ARCHITECTURE & ENGINEERING DESIGN SUBMITTAL

Sheet Title
SECOND FLOOR PLAN

Drawn By Author Checked By Checker

Scale:
1/8" = 1'-0"

Date:
16 FEBRUARY 2021

Project No. Project Number

A2.20
Drawing No.

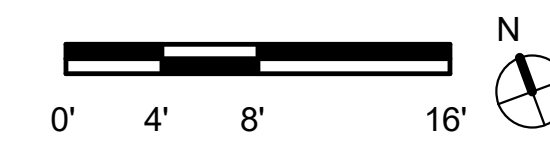
If this drawing is not 30" x 42", it is a reduced print - scale accordingly. All rights reserved. Material may not be reproduced in any form without permission from RossDrulisCusenbery Architecture, Inc.



① LEVEL TWO FLOOR PLAN
1/8" = 1'-0"

GROSS FLOOR AREA

LEVEL 01	8,889sf
LEVEL 02	1,874sf
TOTAL	10,763sf



SANTA ROSA FIRE STATION 5
1400 FOUNTAIN GROVE PARKWAY
SANTA ROSA, CA

REVISIONS		
No.	Description	Date

ARCHITECTURE & ENGINEERING DESIGN SUBMITTAL

Sheet Title
ROOF PLAN

Drawn By Author Checked By Checker

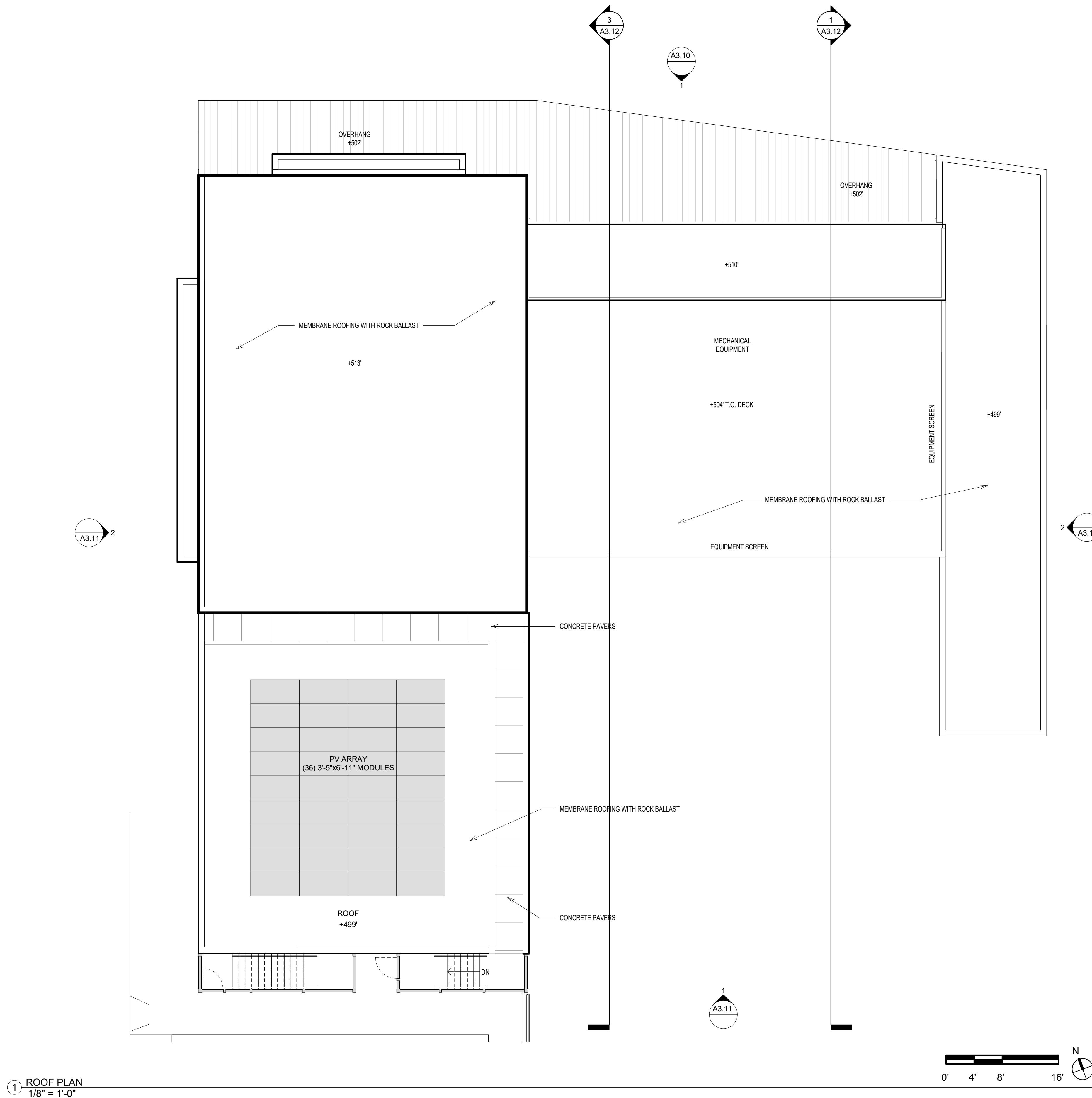
Scale:
1/8" = 1'-0"

Date:
16 FEBRUARY 2021

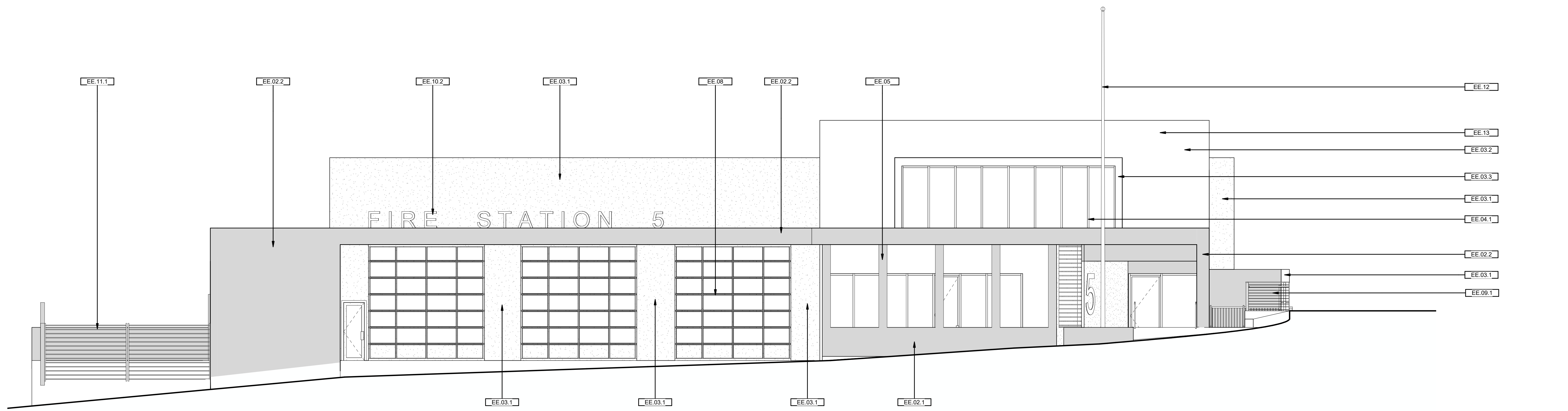
Project No. Project Number

A2.30
Drawing No.

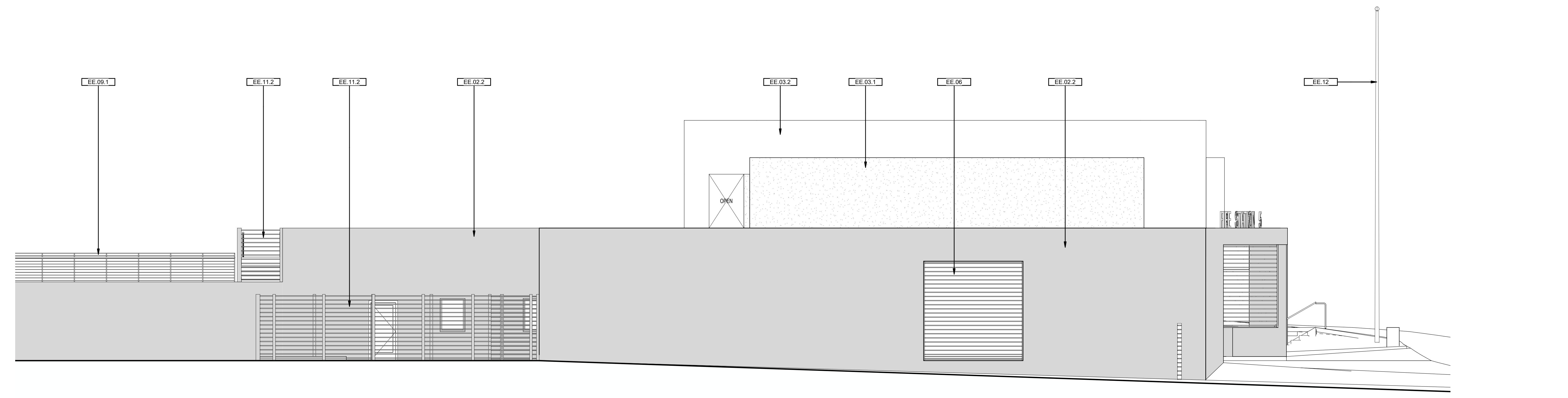
If this drawing is not 30" x 42", it is a reduced print - scale accordingly. All rights reserved. Material may not be reproduced in any form without permission from RossDrulisCusenbery Architecture, Inc.



1 ROOF PLAN
1/8" = 1'-0"



1 NORTH ELEVATION
3/16" = 1'-0"



2 EAST ELEVATION
3/16" = 1'-0"

KEYNOTES	
EE 02.1	HIGH DENSITY FIBERCEMENT PANELS, "SWISSPEARL" OR EQUAL. COST ADD A.L.T.: FLAGSTONE VENEER
EE 02.2	FIBERCEMENT PANELS, "SWISSPEARL" OR EQUAL. FASCIA & SOFFIT
EE 03.1	INTEGRAL COLOR CEMENT PLASTER - COLOR 01 "RED"
EE 03.2	INTEGRAL COLOR CEMENT PLASTER - COLOR 02 "CREAM"
EE 03.3	INTEGRAL COLOR CEMENT PLASTER ALL SIDES OF "BAY" WINDOW
EE 04.1	ALUMINUM STOREFRONT WINDOWS WITH TEMPERED GLASS
EE 05	PAINTED TUBE STEEL FINS
EE 06	POWDER COATED WALL LOUVER SYSTEM. MATCH COLOR OF ADJACENT WALL
EE 08	ALUMINUM ROLL-UP GLAZED APPARATUS BAY DOORS WITH TEMPERED GLASS, MOTOR OPERATED
EE 09.1	STAINLESS STEEL CABLE GUARDRAIL SYSTEM ALONG SIDEWALK
EE 10.2	SIGNAGE, PAINTED WALL MOUNTED DIMENSIONAL INDIVIDUAL LETTERS
EE 11.1	SITE SECURITY FENCING & GATE - ORSOGRIIL "TALIA LOUVER PANEL"
EE 11.2	UTILITY YARD SITE SECURITY FENCING & GATE - ORSOGRIIL "TALIA LOUVER PANEL"
EE 12	ALUMINUM TAPERED FLAGPOLE WITH INTERNAL HALO YARD AND BALL FINIAL
EE 13	ELECTRONIC PUBLIC EMERGENCY NOTIFICATION SIGN TO BE LOCATED ON THIS BUILDING ELEVATION. TYPE, SIZE, AND LOCATION T.B.D.

SANTA ROSA FIRE STATION 5
1400 FOUNTAIN GROVE PARKWAY
SANTA ROSA, CA

REVISIONS		
No.	Description	Date

ARCHITECTURE & ENGINEERING DESIGN SUBMITTAL

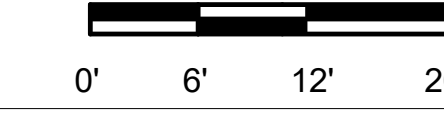
Sheet Title
EXTERIOR ELEVATIONS

Drawn By Author Checked By Checker
Scale:
3/16" = 1'-0"
Date:
16 FEBRUARY 2021
Project No. Project Number

A3.10
Drawing No.



① NORTH ELEVATION
3/32" = 1'-0"



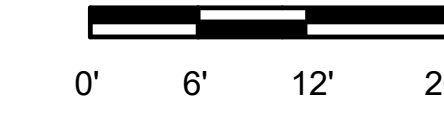
SANTA ROSA FIRE STATION 5
1400 FOUNTAIN GROVE PARKWAY
SANTA ROSA, CA

REVISIONS

No.	Description	Date



② EAST ELEVATION
3/32" = 1'-0"



ARCHITECTURE & ENGINEERING DESIGN SUBMITTAL

Sheet Title
EXTERIOR ELEVATIONS

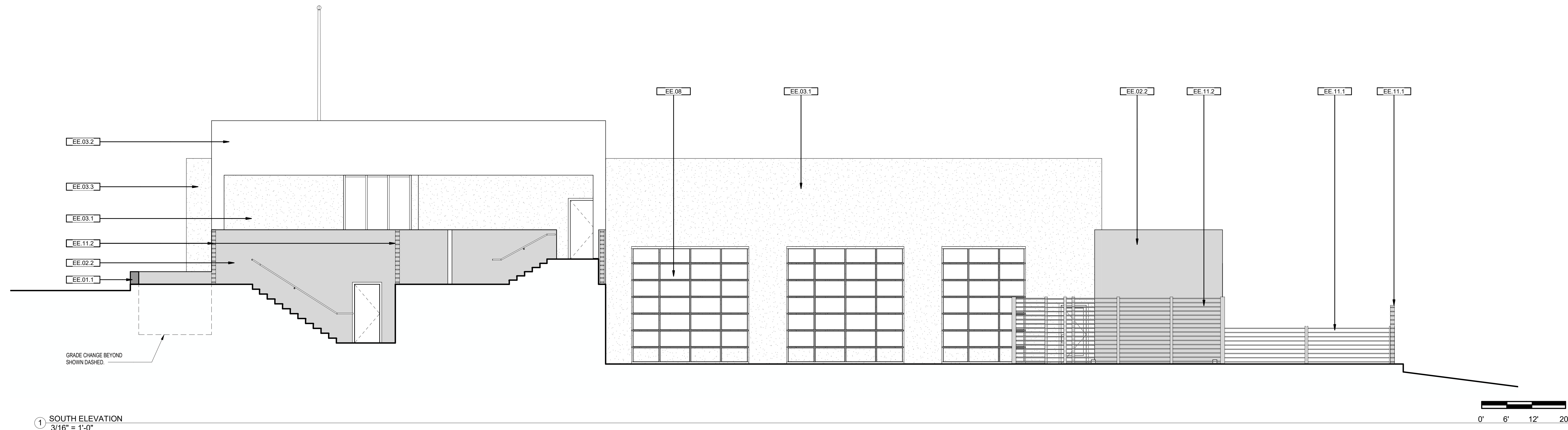
Drawn By Author Checked By Checker

Scale:
3/32" = 1'-0"

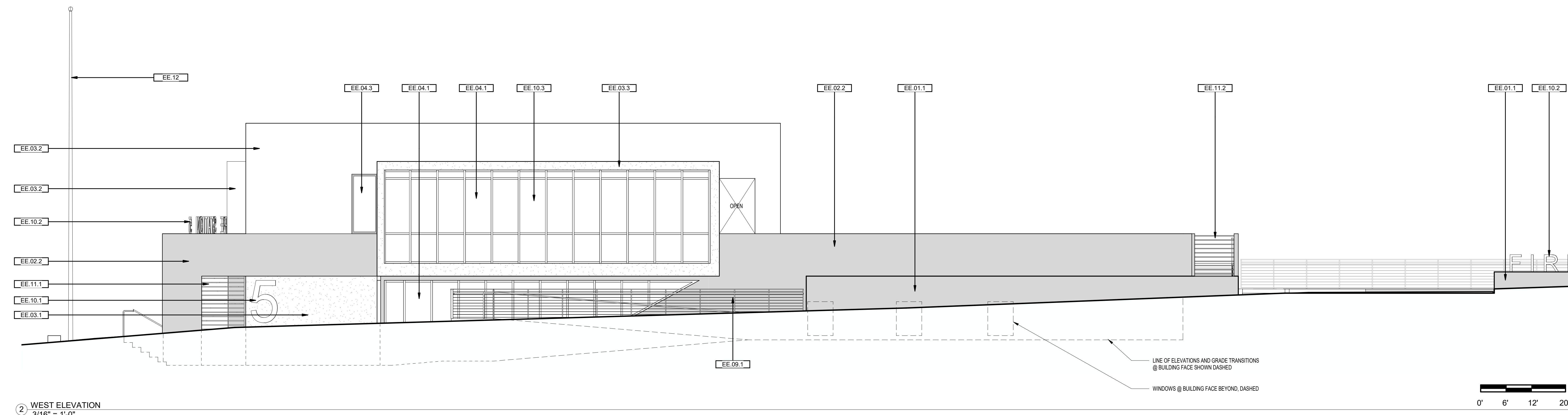
Date:
16 FEBRUARY 2021

Project No. Project Number

A3.10a
Drawing No.



1 SOUTH ELEVATION
3/16" = 1'-0"



2 WEST ELEVATION
3/16" = 1'-0"

KEYNOTES	
EE.01.1	COLOR CAST IN PLACE CONCRETE SITE WALL. COST ADD ALT.: STANDARD CONCRETE WITH FLAGSTONE VENEER ALL EXPOSED SIDES
EE.02.2	FIBERCEMENT PANELS - "SWISSPEARL" OR EQUAL FASCIA & SOFFIT
EE.03.1	INTEGRAL COLOR CEMENT PLASTER - COLOR 01 "RED"
EE.03.2	INTEGRAL COLOR CEMENT PLASTER - COLOR 02 "CREAM"
EE.03.3	INTEGRAL COLOR CEMENT PLASTER ALL SIDES OF "BAY" WINDOW
EE.04.1	ALUMINUM STOREFRONT WINDOWS WITH TEMPERED GLASS
EE.04.3	ALUMINUM WINDOW WITH TEMPERED GLASS
EE.08	ALUMINUM ROLL-UP GLAZED APPARATUS BAY DOORS WITH TEMPERED GLASS. MOTOR OPERATED
EE.09.1	STAINLESS STEEL CABLE GUARDRAIL SYSTEM ALONG SIDEWALK
EE.10.1	SUPER GRAPHIC SIGNAGE ON WALL
EE.10.2	SIGNAGE. PAINTED WALL MOUNTED DIMENSIONAL INDIVIDUAL LETTERS
EE.10.3	SIGNAGE. ETCHED GLASS SUPER GRAPHIC OF SANTA ROSA FIRE DEPARTMENT LOGO INTEGRAL WITH CURTAIN WALL GLAZING
EE.11.1	SITE SECURITY FENCING & GATE - ORSOGRIL "TALIA LOUVER PANEL"
EE.11.2	UTILITY YARD SITE SECURITY FENCING & GATE - ORSOGRIL "TALIA LOUVER PANEL"
EE.12	ALUMINUM TAPERED FLAGPOLE WITH INTERNAL HALYARD AND BALL FINIAL

SANTA ROSA FIRE STATION 5
1400 FOUNTAIN GROVE PARKWAY
SANTA ROSA, CA

REVISIONS

No.	Description	Date

ARCHITECTURE & ENGINEERING DESIGN SUBMITTAL

Sheet Title
EXTERIOR ELEVATIONS

Drawn By Author Checked By Checker

Scale:
3/16" = 1'-0"

Date:
16 FEBRUARY 2021

Project No. Project Number

A3.11
Drawing No.

SANTA ROSA FIRE STATION 5
1400 FOUNTAINGROVE PARKWAY
SANTA ROSA, CA

REVISIONS		
No.	Description	Date

ARCHITECTURE & ENGINEERING DESIGN SUBMITTAL

Sheet Title
EXTERIOR ELEVATIONS

Drawn By Author Checked By Checker

Scale:
3/32" = 1'-0"

Date:
16 FEBRUARY 2021

Project No. Project Number

A3.11a
Drawing No.

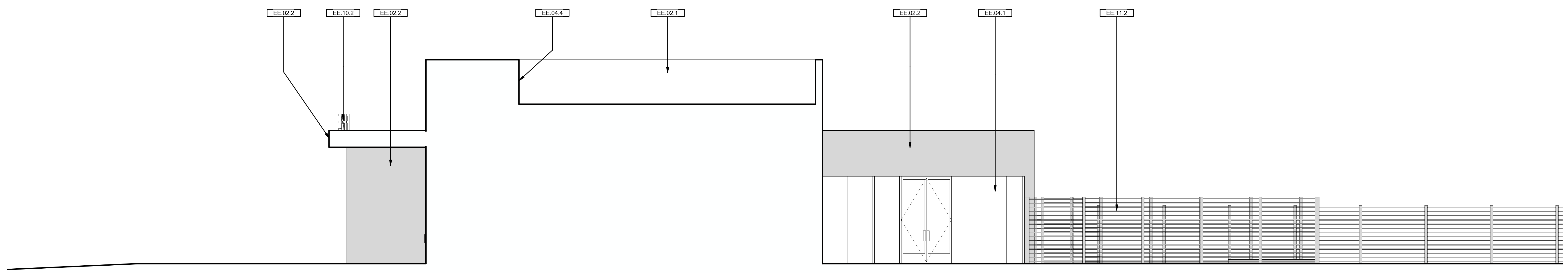
If this drawing is not 30" x 42", it is a reduced print - scale accordingly. All rights reserved. Material may not be reproduced in any form without permission from RossDrulisCusenbery Architecture, Inc.



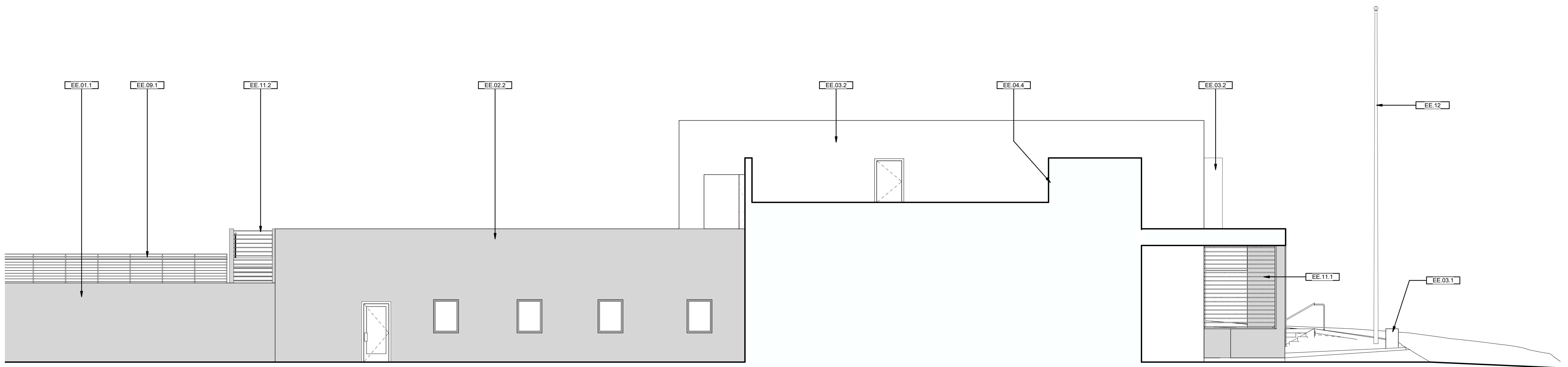
① SOUTH ELEVATION
3/32" = 1'-0"



② WEST ELEVATION
3/32" = 1'-0"



1 WEST ELEVATION 2
3/16" = 1'-0"



3 EAST ELEVATION 2
3/16" = 1'-0"



KEYNOTES	
EE.01.1	COLOR CAST IN PLACE CONCRETE SITE WALL. COST ADD ALT.: STANDARD CONCRETE WITH FLAGSTONE VENEER ALL EXPOSED SIDES
EE.02.1	HIGH DENSITY FIBERCEMENT PANELS, "SWISSPEARL" OR EQUAL. COST ADD ALT.: FLAGSTONE VENEER
EE.02.2	FIBERCEMENT PANELS, "SWISSPEARL" OR EQUAL FASCIA & SOFFIT
EE.03.1	INTEGRAL COLOR CEMENT PLASTER - COLOR 01 "RED"
EE.03.2	INTEGRAL COLOR CEMENT PLASTER - COLOR 02 "CREAM"
EE.04.1	ALUMINUM STOREFRONT WINDOWS WITH TEMPERED GLASS
EE.04.4	ALUMINUM FRAME TEMPERED GLASS CLERESTORY WINDOW AT ROOF
EE.09.1	STAINLESS STEEL CABLE GUARDRAIL SYSTEM ALONG SIDEWALK
EE.10.2	SIGNAGE, PAINTED WALL MOUNTED DIMENSIONAL INDIVIDUAL LETTERS
EE.11.1	SITE SECURITY FENCING & GATE - ORSOGRIL "TALIA LOUVER PANEL"
EE.11.2	UTILITY YARD SITE SECURITY FENCING & GATE - ORSOGRIL "TALIA LOUVER PANEL"
EE.12	ALUMINUM TAPERED FLAGPOLE WITH INTERNAL HALLYARD AND BALL FINIAL

SANTA ROSA FIRE STATION 5
1400 FOUNTAIN GROVE PARKWAY
SANTA ROSA, CA

REVISIONS		
No.	Description	Date

ARCHITECTURE & ENGINEERING DESIGN SUBMITTAL

Sheet Title
EXTERIOR ELEVATIONS

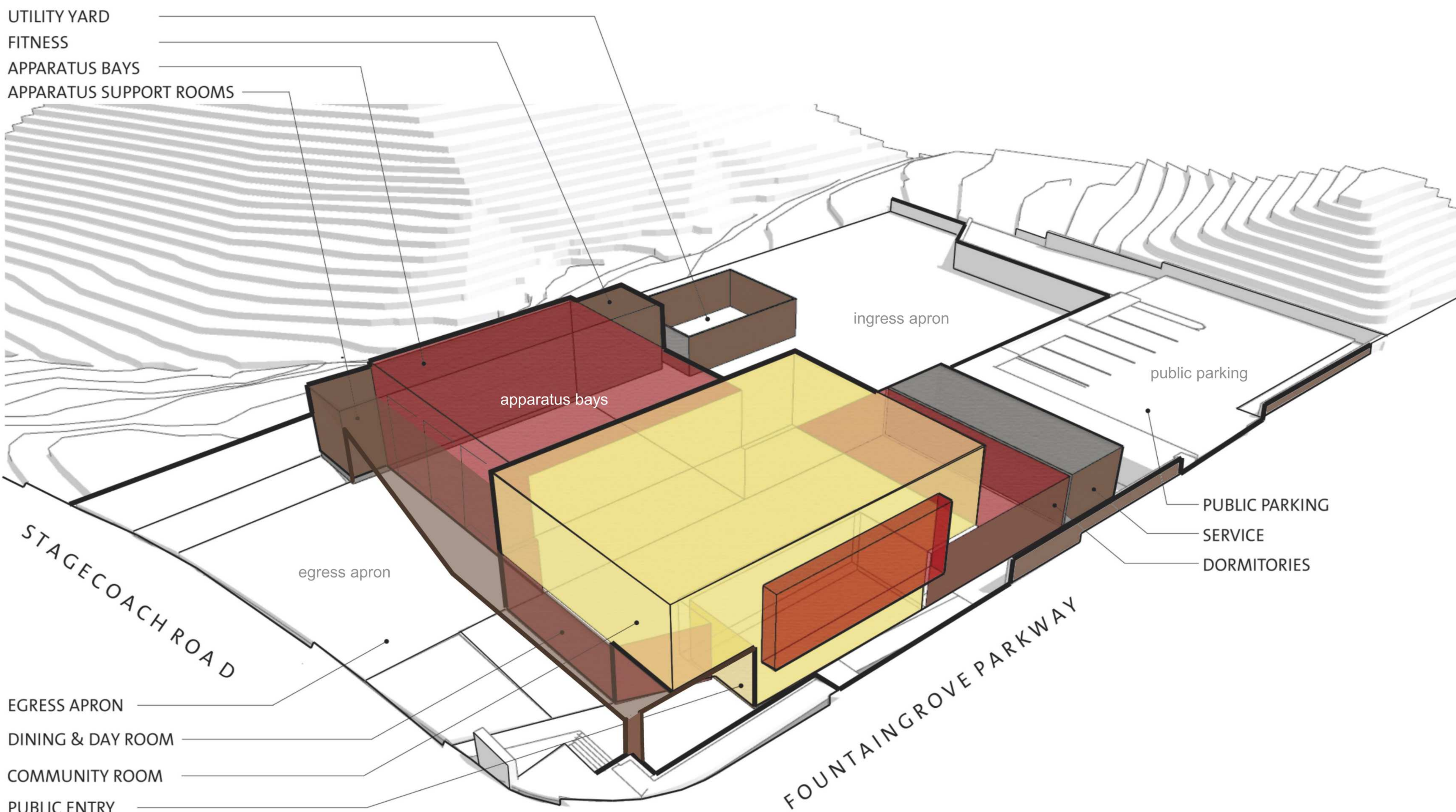
Drawn By Author Checked By Checker

Scale:
3/16" = 1'-0"

Date:
16 FEBRUARY 2021

Project No. Project Number

A3.12
Drawing No.



UTILITY YARD
FITNESS
APPARATUS BAYS
APPARATUS SUPPORT ROOMS

ingress apron

apparatus bays

public parking

egress apron

PUBLIC PARKING
SERVICE
DORMITORIES

STAGECOACH ROAD

EGRESS APRON
DINING & DAY ROOM
COMMUNITY ROOM
PUBLIC ENTRY

FOUNTAINGROVE PARKWAY

SANTA ROSA FIRE STATION 5
1400 FOUNTAINGROVE PARKWAY
SANTA ROSA, CA

REVISIONS

No.	Description	Date

ARCHITECTURE & ENGINEERING DESIGN SUBMITTAL

Sheet Title
3D PROGRAM DIAGRAM

Drawn By Author Checked By Checker

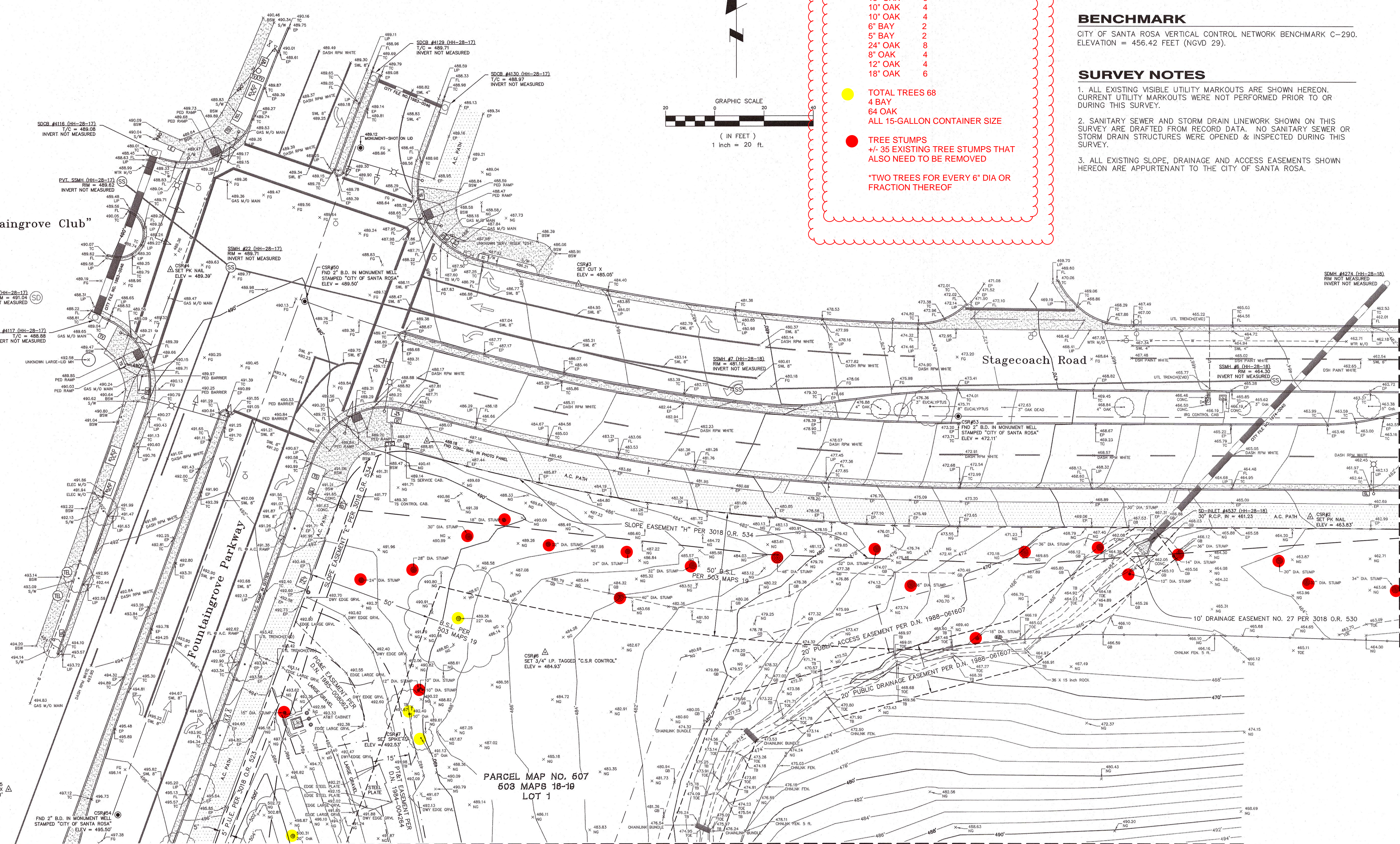
Scale:

Date:
16 FEBRUARY 2021

Project No. Project Number

A3.20
Drawing No.

"The Fountaingrove Club"



TREE REPLACEMENT

- 22" OAK 8
 - 10" OAK 4
 - 5" OAK 2
 - 20" OAK 8
 - 16" OAK 6
 - 15" OAK 6
 - 10" OAK 4
 - 10" OAK 4
 - 6" BAY 2
 - 5" BAY 2
 - 24" OAK 8
 - 8" OAK 4
 - 12" OAK 4
 - 18" OAK 6
- TOTAL TREES 68
4 BAY
64 OAK
ALL 15-GALLON CONTAINER SIZE
- TREE STUMPS
+/- 35 EXISTING TREE STUMPS THAT ALSO NEED TO BE REMOVED
- TWO TREES FOR EVERY 6" DIA OR FRACTION THEREOF

BASIS OF BEARINGS

NORTH 85° 39' 04" WEST BETWEEN CITY OF SANTA ROSA HORIZONTAL CONTROL NETWORK MONUMENTS G-475 & G-467. NAD83 - ZONE 2 - EPOCH 2010.00

BENCHMARK

CITY OF SANTA ROSA VERTICAL CONTROL NETWORK BENCHMARK C-290. ELEVATION = 456.42 FEET (NGVD 29).

SURVEY NOTES

1. ALL EXISTING VISIBLE UTILITY MARKOUTS ARE SHOWN HEREON. CURRENT UTILITY MARKOUTS WERE NOT PERFORMED PRIOR TO OR DURING THIS SURVEY.
2. SANITARY SEWER AND STORM DRAIN LINEWORK SHOWN ON THIS SURVEY ARE DRAFTED FROM RECORD DATA. NO SANITARY SEWER OR STORM DRAIN STRUCTURES WERE OPENED & INSPECTED DURING THIS SURVEY.
3. ALL EXISTING SLOPE, DRAINAGE AND ACCESS EASEMENTS SHOWN HEREON ARE APPURTENANT TO THE CITY OF SANTA ROSA.

PROFESSIONAL LAND SURVEYOR
MICHAEL R. JONES
No. 8090
STATE OF CALIFORNIA

City of Santa Rosa

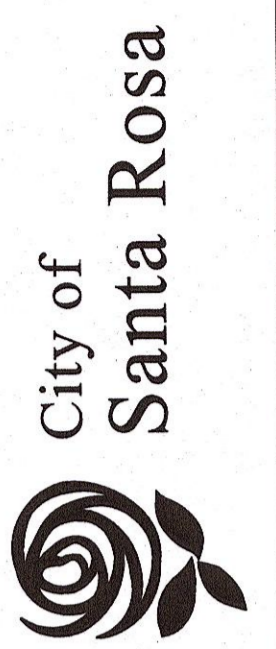
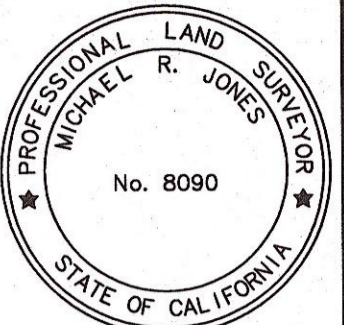
DATE: 10/14/2019
CHK BY: MRJ
THIS MAP REPRESENTS A FIELD SURVEY MADE BY ME OR UNDER MY DIRECTION IN SEPTEMBER 2019.
Date: 10/14/19
By: Michael R. Jones, P.L.S. 8090

TOPOGRAPHIC MAP
Permanent Fire Station 5 Rebuild
Fountaingrove Parkway & Stagecoach Road

SCALE: 1" = 20'
DWN BY: WCO
DATE: 10/14/2019

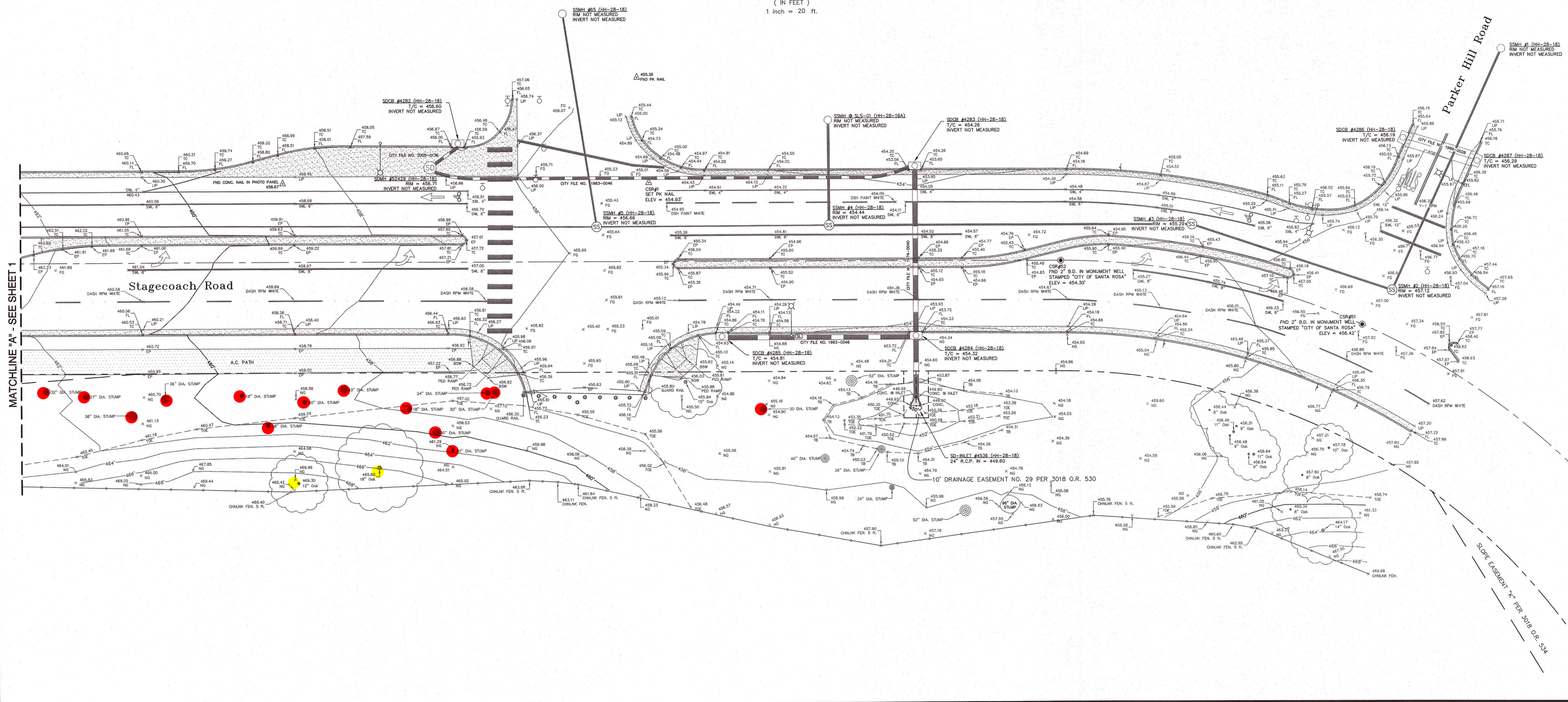
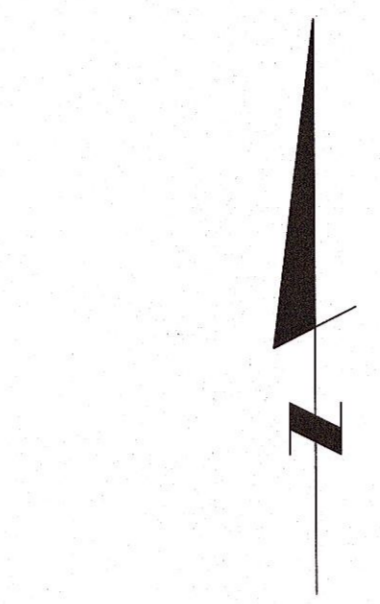
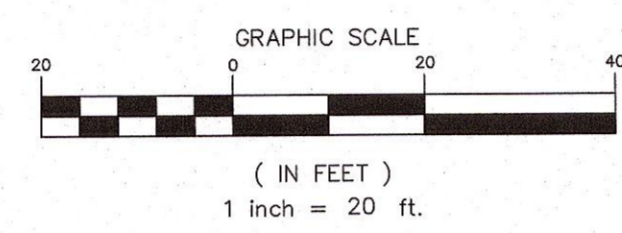
FIELD BOOK NUMBER 184-M1
SHEET: 1 OF 3
PID NO.: 02184

LEGEND (ALL MAY NOT APPLY)									
● FOUND IRON PIPE AS NOTED	—E—E— ELECTRIC - MARKOUT	○ GAS - VALVE	○ STORM DRAIN - CATCH BASIN	○ TRAFFIC SIGNAL - CABINET, SERVICE	○ WATER - IRRIGATION VALVE	B.D. BRASS DISK	GB GRADE BREAK	NT NO TAG	UT UTILITY TRENCH
○ FOUND CENTERLINE MONUMENT, SIZE AS NOTED	—OHV— ELECTRIC - OVERHEAD WIRE	○ GAS - VAULT	○ STORM DRAIN - DROOP INLET	○ TRAFFIC SIGNAL - DETECTOR LOOP	—W—W— WATER - MARKOUT	BLDG BUILDING	G.M. GAS METER	O.R. OFFICIAL RECORDS	VG VALLEY GUTTER
○ FOUND NAIL & TAG, STAMPED AS NOTED	—E—E— ELECTRIC - METER	○ MALIBOX	○ STORM DRAIN - MANHOLE	○ TRAFFIC SIGNAL - DETECTOR LOOP, BIKE	○ WATER - METER	BSW BACK OF SIDEWALK	GV GAS VALVE	OR ORNAMENTAL TREE	VT VALVE
○ SET SURVEY CONTROL POINT AS NOTED	—E—E— ELECTRIC - SURFACE TRANSFORMER	○ ROCK	○ TELEPHONE - MANHOLE	○ TRAFFIC SIGNAL - INTERCONNECT MARKOUT	○ WATER - MONITORING WELL	CAB CABINET	PN PULLBOX	PR PULLBOX	WM WATER METER
○ BARRICADE - BOLLARD	—E—E— ELECTRIC - VAULT	○ SANITARY SEWER - CLEANOUT (MAIN)	—TEL—TEL— TELEPHONE - MARKOUT	○ TRAFFIC SIGNAL - LOOP WIRE HANDHOLE	○ WATER - POST INDICATOR VALVE	C&G CURB AND GUTTER	E.D.E. EDGE/CONCRETE BAND	P.I.V. POST INDICATOR VALVE	WR WATER
—TV—TV— CABLE TV - MARKOUT	—E—E— ELECTRIC - CHAINLINK	○ SANITARY SEWER - CLEANOUT (SERVICE)	—TEL—TEL— TELEPHONE - PULLBOX	○ TRAFFIC SIGNAL - MARKOUT	○ WATER - SPRINKLER HEAD	CL CENTERLINE	EP EDGE OF PAVEMENT	P.U.E. PUBLIC UTILITY EASEMENT	WW WATER VALVE
—C—C— CABLE TV - PULLBOX	—E—E— ELECTRIC - FENCE - WIRE	○ SANITARY SEWER - MANHOLE	—TEL—TEL— TELEPHONE - SERVICE RISER	○ TRAFFIC SIGNAL - PEDESTRIAN SIGNAL POLE	○ WATER - VAULT	CSR CITY OF SANTA ROSA	EVROVM EVERGREEN	RCP REINFORCED CONCRETE PIPE	Y-Y DOUBLE YELLOW
—C—C— CABLE TV - SERVICE RISER	—E—E— ELECTRIC - FENCE - WOOD	○ SANITARY SEWER - SCRIBED "S" (SERVICE)	—TEL—TEL— TELEPHONE - VAULT	○ TRAFFIC SIGNAL - POLE 1B	○ WATER - VAULT	COR CORRUGATED METAL PIPE	IRR IRRIGATION	RSR RISER	Y-Y DOUBLE YELLOW
○ ELECTRIC - PULLBOX	○ FENCE - GATE POST	○ SIGN	○ TRAFFIC SIGNAL - PULLBOX	○ TRAFFIC SIGNAL - POLE 1B	○ WATER - VAULT	CO CLEANOUT	JB JOINT BOX	RR RAILROAD	TR TRENCH
○ ELECTRIC - JOINT POLE	○ FENCE - WOOD	○ STREET LIGHT - STREET LIGHT	○ TRAFFIC SIGNAL - POLE 1B	○ TRAFFIC SIGNAL - POLE 1B	○ WATER - VAULT	CONC CONCRETE	JP JOINT POLE	RR RAILROAD	TR TRENCH
○ ELECTRIC - JOINT POLE W/LIGHT	○ GAS - ANODE	○ STREET LIGHT - ELECTROLIGHT	○ TRAFFIC SIGNAL - POLE 1B	○ TRAFFIC SIGNAL - POLE 1B	○ WATER - VAULT	C.S.S.C. COUNTY SURVEYOR SONOMA COUNTY	LP LIP OF GUTTER	RR RAILROAD	TR TRENCH
○ ELECTRIC - JOINT POLE W/RISER	○ GAS - ETS	○ STREET LIGHT - MARKOUT	○ TRAFFIC SIGNAL - POLE 1B	○ TRAFFIC SIGNAL - POLE 1B	○ WATER - VAULT	DECID. DECIDUOUS	MH MANHOLE	RR RAILROAD	TR TRENCH
○ ELECTRIC - JOINT POLE W/LIGHT & RISER	○ GAS - MARKOUT	○ STREET LIGHT - PULLBOX	○ TRAFFIC SIGNAL - POLE 1B	○ TRAFFIC SIGNAL - POLE 1B	○ WATER - VAULT	FG FINISH GRADE	M/O MARKOUT	RR RAILROAD	TR TRENCH
	○ GAS - METER	○ STREET LIGHT - PULLBOX	○ TRAFFIC SIGNAL - POLE 1B	○ TRAFFIC SIGNAL - POLE 1B	○ WATER - VAULT	FH FIRE HYDRANT	NG NATURAL GROUND	RR RAILROAD	TR TRENCH
			○ TRAFFIC SIGNAL - POLE 1B	○ TRAFFIC SIGNAL - POLE 1B	○ WATER - VAULT	FL FLOWLINE	SS SANITARY SEWER		



SURVEY NOTES

1. ALL EXISTING VISIBLE UTILITY MARKOUTS ARE SHOWN HEREON. CURRENT UTILITY MARKOUTS WERE NOT PERFORMED PRIOR TO OR DURING THIS SURVEY.
2. SANITARY SEWER AND STORM DRAIN LINEWORK SHOWN ON THIS SURVEY ARE DRAFTED FROM RECORD DATA. NO SANITARY SEWER OR STORM DRAIN STRUCTURES WERE OPENED & INSPECTED DURING THIS SURVEY.
3. ALL EXISTING SLOPE, DRAINAGE AND ACCESS EASEMENTS SHOWN HEREON ARE APPURTENANT TO THE CITY OF SANTA ROSA.



MATCHLINE "A" - SEE SHEET 1

LEGEND (ALL MAY NOT APPLY)

● FOUND IRON PIPE AS NOTED	—E—E—E— ELECTRIC - MARKOUT	—OHW— ELECTRIC - OVERHEAD WIRE	⊕ ELECTRIC - GUY ANCHOR	⊕ GAS - VALVE	⊕ GAS - VAULT	⊕ ROCK	⊕ SANITARY SEWER - CLEANOUT (MAN)	⊕ SANITARY SEWER - CLEANOUT (SERVICE)	⊕ SANITARY SEWER - MANHOLE	⊕ SANITARY SEWER - SCRIBED "S" (SERVICE)	⊕ SHRUB	⊕ SIGN	⊕ STREET LIGHT - STREET LIGHT	⊕ STREET LIGHT - ELECTROLUER	⊕ STREET LIGHT - MARKOUT	⊕ STREET LIGHT - JOINT POLE W/LIGHT & RISER	⊕ ELECTRIC - PULLBOX	⊕ ELECTRIC - JOINT POLE	⊕ ELECTRIC - JOINT POLE W/LIGHT	⊕ ELECTRIC - JOINT POLE W/RISER	⊕ ELECTRIC - JOINT POLE W/LIGHT & RISER	⊕ TELE - TEL	⊕ TELEPHONE - MANHOLE	⊕ TELEPHONE - MARKOUT	⊕ TELEPHONE - PULLBOX	⊕ TELEPHONE - SERVICE RISER	⊕ TELEPHONE - VAULT	⊕ TREE - DECIDUOUS	⊕ TREE - EVERGREEN	⊕ TREE - PALM	⊕ TRAFFIC SIGNAL - CABINET, SERVICE	⊕ TRAFFIC SIGNAL - DETECTOR LOOP	⊕ TRAFFIC SIGNAL - DETECTOR LOOP, BIKE	⊕ TRAFFIC SIGNAL - INTERCONNECT MARKOUT	⊕ TRAFFIC SIGNAL - LOOPWIRE HANDHOLE	⊕ TRAFFIC SIGNAL - MARKOUT	⊕ TRAFFIC SIGNAL - PEDESTRIAN SIGNAL POLE	⊕ TRAFFIC SIGNAL - PULLBOX	⊕ TRAFFIC SIGNAL - POLE 1B	⊕ TRAFFIC SIGNAL - POLE W/15' MAST ARM	⊕ TRAFFIC SIGNAL - POLE W/20' MAST ARM	⊕ TRAFFIC SIGNAL - POLE W/25' MAST ARM	⊕ TRAFFIC SIGNAL - POLE W/30' MAST ARM	⊕ TRAFFIC SIGNAL - POLE W/40' MAST ARM	⊕ TRAFFIC SIGNAL - POLE W/45' MAST ARM	⊕ TRAFFIC SIGNAL - POLE W/50' MAST ARM	⊕ TRAFFIC SIGNAL - VAULT	⊕ TRUNCATED DOMES	⊕ UT-UT- UTILITY (UNKNOWN) TRENCH - CENTERLINE	⊕ WATER - BLOW OFF VALVE	⊕ WATER - FIRE HYDRANT	⊕ WATER - IRRIGATION VALVE	⊕ WATER - MARKOUT	⊕ WATER - METER	⊕ WATER - MONITORING WELL	⊕ WATER - POST INDICATOR VALVE	⊕ WATER - SPRINKLER HEAD	⊕ WATER - VALVE	⊕ WATER - VAULT	⊕ B.D. BRASS DISK	⊕ BLDG BUILDING	⊕ BSW BACK OF SIDEWALK	⊕ CAB CABINET	⊕ C&G CURB AND GUTTER	⊕ CB CATCH BASIN	⊕ CL CENTERLINE	⊕ CSR CITY OF SANTA ROSA	⊕ CMP CORRUGATED METAL PIPE	⊕ CO CLEANOUT	⊕ CONC. CONCRETE	⊕ C.S.S.C. COUNTY SURVEYOR SONOMA COUNTY	⊕ DECID. DECIDUOUS	⊕ DETECT DETECTOR	⊕ B/F BASE @ FACE	⊕ BFP BACK FLOW PREVENTION VALVE	⊕ DI DROP INLET	⊕ DW DASHED WHITE	⊕ DWH DRIVEWAY	⊕ DYM DASHED YELLOW	⊕ EDGE EDGE/CONCRETE BAND	⊕ ELEC. ELECTRIC	⊕ EP EDGE OF PAVEMENT	⊕ EVERGRN EVERGREEN	⊕ F/C FACE OF CURB	⊕ FEN FENCE	⊕ FGD FIRE DEPARTMENT CONNECT	⊕ FIN FINE	⊕ FGH FINISH GRADE	⊕ FHI FIRE HYDRANT	⊕ FL FLOWLINE	⊕ FND FOUND	⊕ GB GRADE BREAK	⊕ GM GAS METER	⊕ GV GAS VALVE	⊕ HDWL HEADWALL	⊕ IC INTERCONNECT	⊕ INV INVERT	⊕ IP IRON PIPE	⊕ IRR IRRIGATION	⊕ JB JUNCTION BOX	⊕ RSR RISER	⊕ SERV. SERVICE	⊕ S/W SIDEWALK	⊕ SWL SOLID YELLOW LINE	⊕ SYL SOLID WHITE LINE	⊕ TB TOP OF BANK	⊕ TC TOP OF CURB	⊕ TEL TELEPHONE	⊕ TOE TOE OF BANK OR SLOPE	⊕ TRW TREE WELL	⊕ TS TRAFFIC SIGNAL	⊕ UT UTILITY TRENCH	⊕ VG VALLEY OUTER	⊕ VLT VAULT	⊕ WM WATER METER	⊕ WTR WATER	⊕ WW WATER VALVE	⊕ Y-Y DOUBLE YELLOW	⊕ #XXX STRUCTURE NUMBER
----------------------------	----------------------------	--------------------------------	-------------------------	---------------	---------------	--------	-----------------------------------	---------------------------------------	----------------------------	--	---------	--------	-------------------------------	------------------------------	--------------------------	---	----------------------	-------------------------	---------------------------------	---------------------------------	---	--------------	-----------------------	-----------------------	-----------------------	-----------------------------	---------------------	--------------------	--------------------	---------------	-------------------------------------	----------------------------------	--	---	--------------------------------------	----------------------------	---	----------------------------	----------------------------	--	--	--	--	--	--	--	--------------------------	-------------------	--	--------------------------	------------------------	----------------------------	-------------------	-----------------	---------------------------	--------------------------------	--------------------------	-----------------	-----------------	-------------------	-----------------	------------------------	---------------	-----------------------	------------------	-----------------	--------------------------	-----------------------------	---------------	------------------	--	--------------------	-------------------	-------------------	----------------------------------	-----------------	-------------------	----------------	---------------------	---------------------------	------------------	-----------------------	---------------------	--------------------	-------------	-------------------------------	------------	--------------------	--------------------	---------------	-------------	------------------	----------------	----------------	-----------------	-------------------	--------------	----------------	------------------	-------------------	-------------	-----------------	----------------	-------------------------	------------------------	------------------	------------------	-----------------	----------------------------	-----------------	---------------------	---------------------	-------------------	-------------	------------------	-------------	------------------	---------------------	-------------------------

NO.	DATE	REVISION	BY

SCALE: 1" = 20'

DWN BY: WCO

CHK BY: MRJ

DATE: 10/14/2019

THIS MAP REPRESENTS A FIELD SURVEY MADE BY ME OR UNDER MY DIRECTION IN SEPTEMBER 2019.

By: *Michael R. Jones* Date: 10/18/2019

MICHAEL R. JONES, P.L.S. 8090

TOPOGRAPHIC MAP

Permanent Fire Station 5 Rebuild

Fountaingrove Parkway & Stagecoach Road

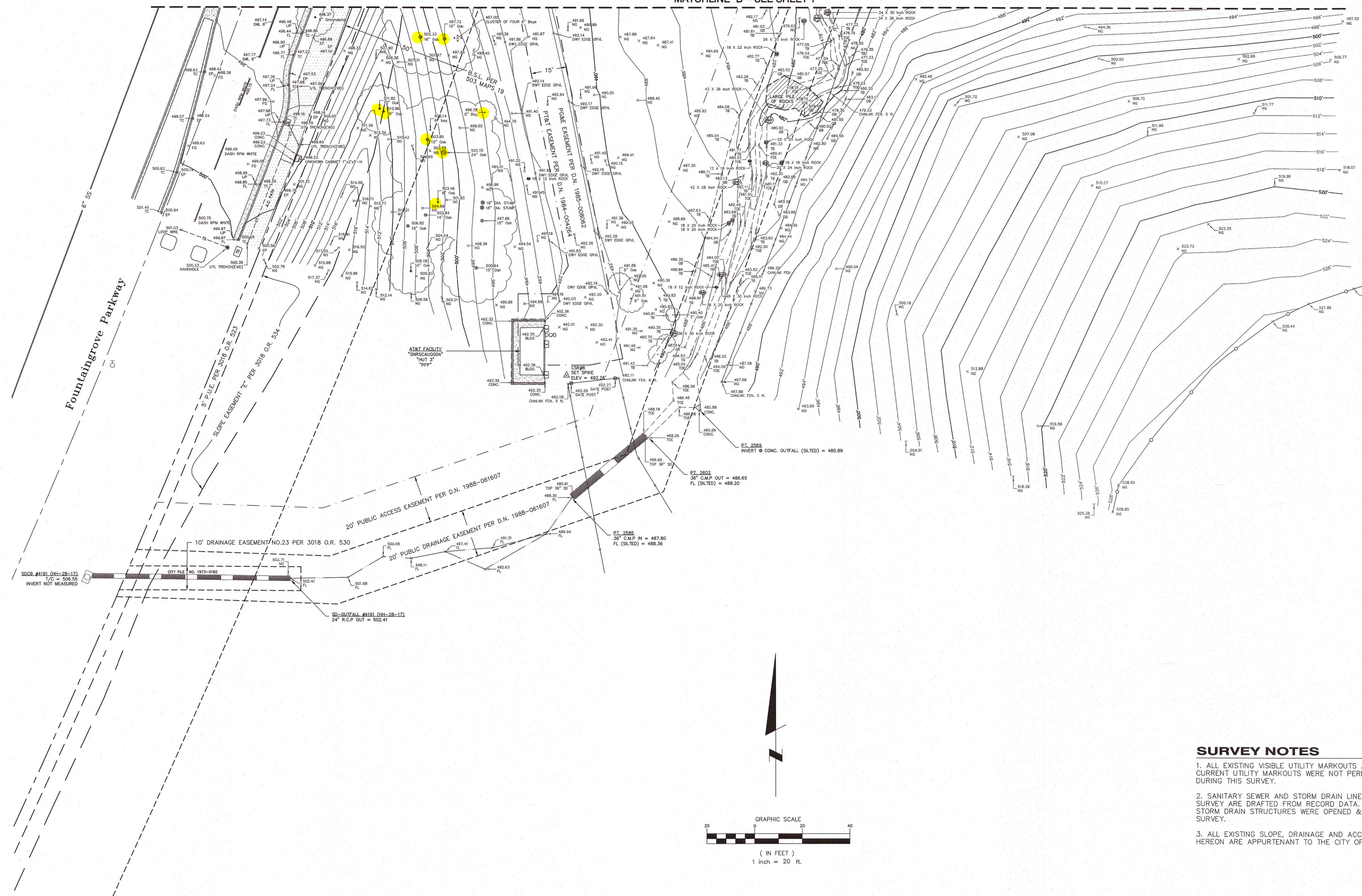
FIELD BOOK NUMBER 184-M1

SHEET: 2 OF 3

PID NO.: 02184

10/14/2019 12:15 PM \\projects\2019_2020\10184 permanent fire station 5 rebuild\02-001.dwg\02184 permanent fire station 5 rebuild.dwg

MATCHLINE "B" - SEE SHEET 1



City of
Santa Rosa

NO.	DATE	REVISION	BY

DATE: 10/14/2019
 CHK BY: MRJ
 THIS MAP REPRESENTS A FIELD SURVEY MADE BY ME OR UNDER MY DIRECTION IN SEPTEMBER 2019.
 By *Michael R. Jones* Date: 10/14/2019
 MICHAEL R. JONES, P.L.S. 8090

TOPOGRAPHIC MAP
Permanent Fire Station 5 Rebuild
Fountaingrove Parkway & Stagescoach Road

FIELD BOOK NUMBER
 184-M1
 SHEET: 3 OF 3
 PID NO.: 02184

SURVEY NOTES

- ALL EXISTING VISIBLE UTILITY MARKOUTS ARE SHOWN HEREON. CURRENT UTILITY MARKOUTS WERE NOT PERFORMED PRIOR TO OR DURING THIS SURVEY.
- SANITARY SEWER AND STORM DRAIN LINEWORK SHOWN ON THIS SURVEY ARE DRAFTED FROM RECORD DATA. NO SANITARY SEWER OR STORM DRAIN STRUCTURES WERE OPENED & INSPECTED DURING THIS SURVEY.
- ALL EXISTING SLOPE, DRAINAGE AND ACCESS EASEMENTS SHOWN HEREON ARE APPURTENANT TO THE CITY OF SANTA ROSA.

ELECTRIC - GUY ANCHOR	GAS - VALVE	STORM DRAIN - CATCH BASIN	TRAFFIC SIGNAL - CABINET, SERVICE	WATER - IRRIGATION VALVE	B.D. BRASS DISK	DW DASHED WHITE	GS GRADE BREAK	NT NO TAG	SSMH SANITARY SEWER MANHOLE	UT UTILITY TRENCH
FOUND IRON PIPE AS NOTED	GAS - VAULT	STORM DRAIN - DROP INLET	TRAFFIC SIGNAL - DETECTOR LOOP	WATER - MARKOUT	BLDG BUILDING	DWH DRIVEWAY	GM GAS METER	OHW OVERHEAD WIRE	S/W SIDEWALK	VG VALLEY GUTTER
FOUND CENTERLINE MONUMENT, SIZE AS NOTED	MAILBOX	STORM DRAIN - MANHOLE	TRAFFIC SIGNAL - DETECTOR LOOP, BIKE	WATER - METER	BSW BACK OF SIDEWALK	DY DASHED YELLOW	OM ORNAMENTAL TREE	SWL SOLID WHITE LINE	VLT VAULT	WM WATER METER
FOUND NAIL & TAG, STAMPED AS NOTED	ROCK	TELEPHONE - MANHOLE	TRAFFIC SIGNAL - INTERCONNECT MARKOUT	WATER - MONITORING WELL	CAB CABINET	EDC EDGE OF CONCRETE BAND	HDW HEADWALL	STS SOLID YELLOW LINE	WTR WATER	Y-Y DOUBLE YELLOW
SET SURVEY CONTROL POINT AS NOTED	SANITARY SEWER - CLEANOUT (MAIN)	TELEPHONE - MARKOUT	TRAFFIC SIGNAL - LOOPWIRE HANDHOLE	WATER - POST INDICATOR VALVE	C&G CURB AND GUTTER	EP EDGE OF PAVEMENT	INV INVERT	TB TOP OF BANK	WVA WATER VALVE	WTR WATER
BARRICADE - BOLLARD	SANITARY SEWER - CLEANOUT (SERVICE)	TELEPHONE - PULLBOX	TRAFFIC SIGNAL - MARKOUT	WATER - SPRINKLER HEAD	CB CATCH BASIN	EVGRN EVERGREEN	JPC JOINT POLE	TC TOP OF CURB	WVA WATER VALVE	Y-Y DOUBLE YELLOW
CABLE TV - MARKOUT	SANITARY SEWER - MANHOLE	TELEPHONE - SERVICE RISER	TRAFFIC SIGNAL - PEDESTRIAN SIGNAL POLE	WATER - VALVE	CL CENTERLINE	F/C FACE OF CURB	IRR IRRIGATION	TOE TOE OF BANK OR SLOPE	WVA WATER VALVE	WTR WATER
CABLE TV - PULLBOX	SANITARY SEWER - SCRIBBED "S" (SERVICE)	TELEPHONE - PULLBOX	TRAFFIC SIGNAL - POLE W/40' MAST ARM	WATER - VAULT	CSR CITY OF SANTA ROSA	FDC FIRE DEPARTMENT CONNECT	JP JOINT POLE	TR TOP OF ROAD	WVA WATER VALVE	WTR WATER
CABLE TV - SERVICE RISER	SHRUB	TELEPHONE - VAULT	TRAFFIC SIGNAL - POLE W/45' MAST ARM	2 WY LT TWO WAY LEFT	CMP CORRUGATED METAL PIPE	FEN FENCE	RR RAILROAD	TREE W TREE WELL	WVA WATER VALVE	WTR WATER
ELECTRIC - PULLBOX	SIGN	TELEPHONE - VAULT	TRAFFIC SIGNAL - POLE W/50' MAST ARM	AC ASPHALT CONCRETE	CND CLEANOUT	FGH FIRE HYDRANT	RSR RISER	TRS TRAFFIC SIGNAL	WVA WATER VALVE	WTR WATER
ELECTRIC - JOINT POLE	STREET LIGHT - STREET LIGHT	TREE - DECIDUOUS	TRAFFIC SIGNAL - POLE W/15' MAST ARM	AG/CONC AGGREGATE CONCRETE	CONC CONCRETE	FEN FENCE	RR RAILROAD	TRS TRAFFIC SIGNAL	WVA WATER VALVE	WTR WATER
ELECTRIC - JOINT POLE W/LIGHT	STREET LIGHT - ELECTROLUX	TREE - EVERGREEN	TRAFFIC SIGNAL - POLE W/20' MAST ARM	B/F BASE OF FACE	C.S.S.C. COUNTY SURVEYOR SONOMA COUNTY	FGH FIRE HYDRANT	RSR RISER	TRS TRAFFIC SIGNAL	WVA WATER VALVE	WTR WATER
ELECTRIC - JOINT POLE W/RISER	STREET LIGHT - MARKOUT	TREE - PALM	TRAFFIC SIGNAL - POLE W/25' MAST ARM	8/F BASE OF FACE	DECOD DECIDUOUS	FFL FLOWLINE	RSR RISER	TRS TRAFFIC SIGNAL	WVA WATER VALVE	WTR WATER
ELECTRIC - JOINT POLE W/LIGHT & RISER	STREET LIGHT - PULLBOX	TRAFFIC SIGNAL - CABINET, CONTROL	TRAFFIC SIGNAL - POLE W/35' MAST ARM	BFP BACK FLOW PREVENTION VALVE	DETECT DETECTOR	FND FOUND	RSR RISER	TRS TRAFFIC SIGNAL	WVA WATER VALVE	WTR WATER