

Project Description:

1506 Ronne Dr. Santa Rosa, CA 95404

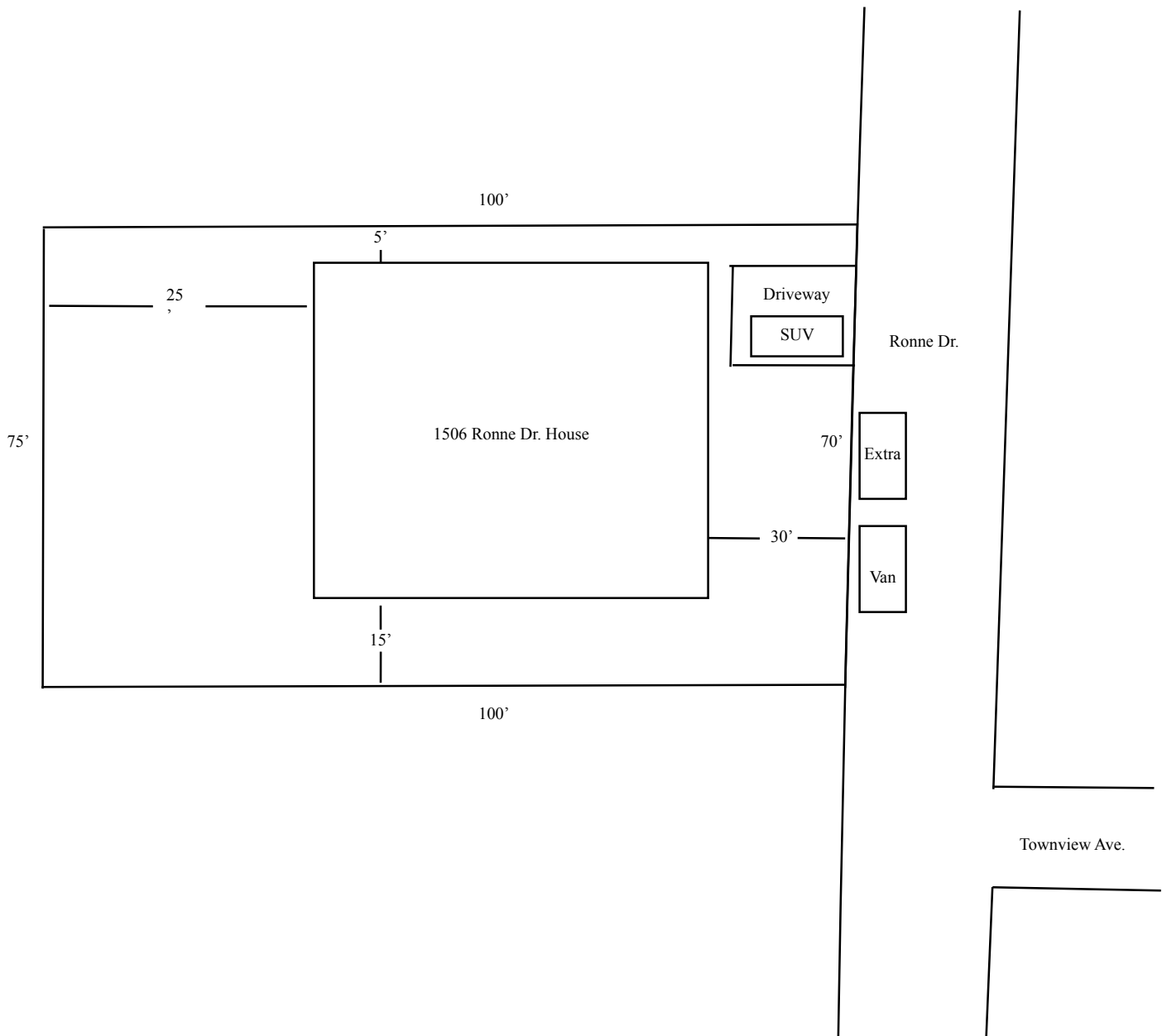
Existing use: 6 bed community care facility

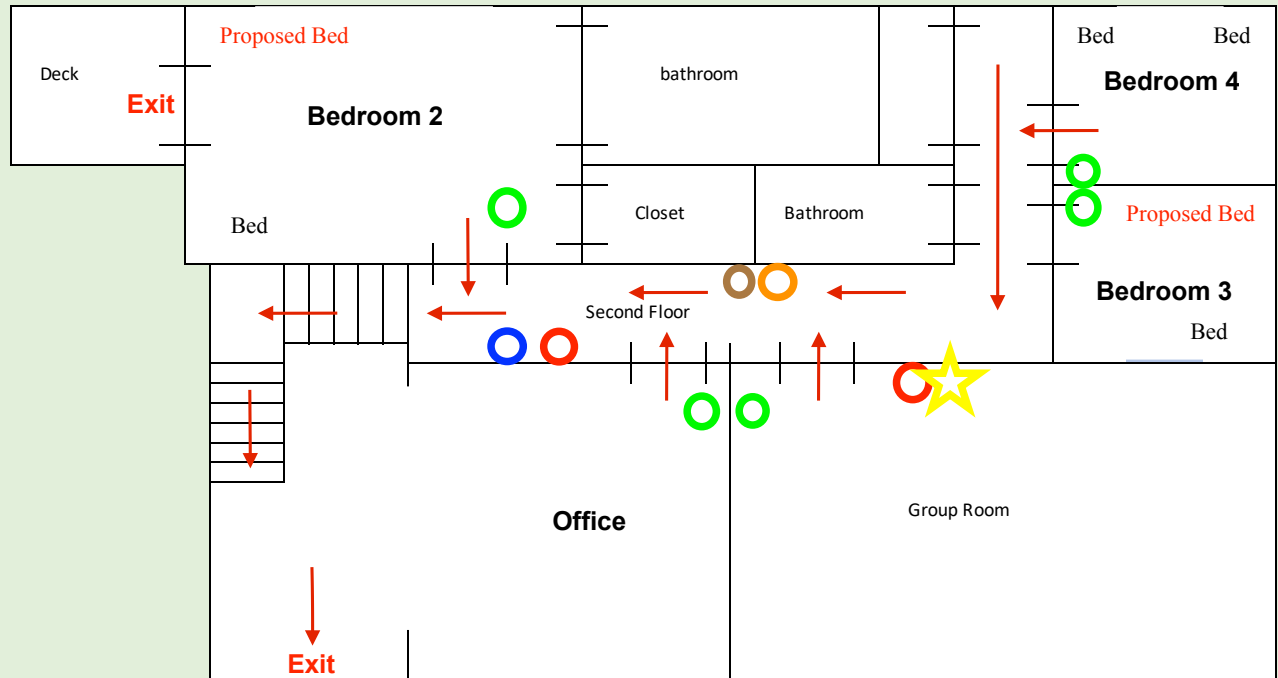
Proposed use: 8 bed community care facility

Hours of operation: 24-7

Staff on site: 2-5 depending on shift

Pura Vida Recovery Services currently operates a 6 bed community care facility for adult substance abuse. We would like to add 2 beds to the existing facility. This will be accomplished without adding any staff, any renovation to the home, or the addition of any traffic to and from the home. We currently have two private rooms at the home, and we propose to add one bed to each of those rooms bringing the total number of available beds from 6 to 8.





-  You are here
-  Fire Alarm
-  Fire Alarm Button
-  Smoke Detector
-  Carbon Monoxide Detector
-  Fire Extinguisher

City of Santa Rosa
 Planning & Economic
 Development Department
 07/15/2024
 RECEIVED