

Carpenter Urban Cottages Landmark Alteration Permit

25 Rae & 715 Tupper Streets

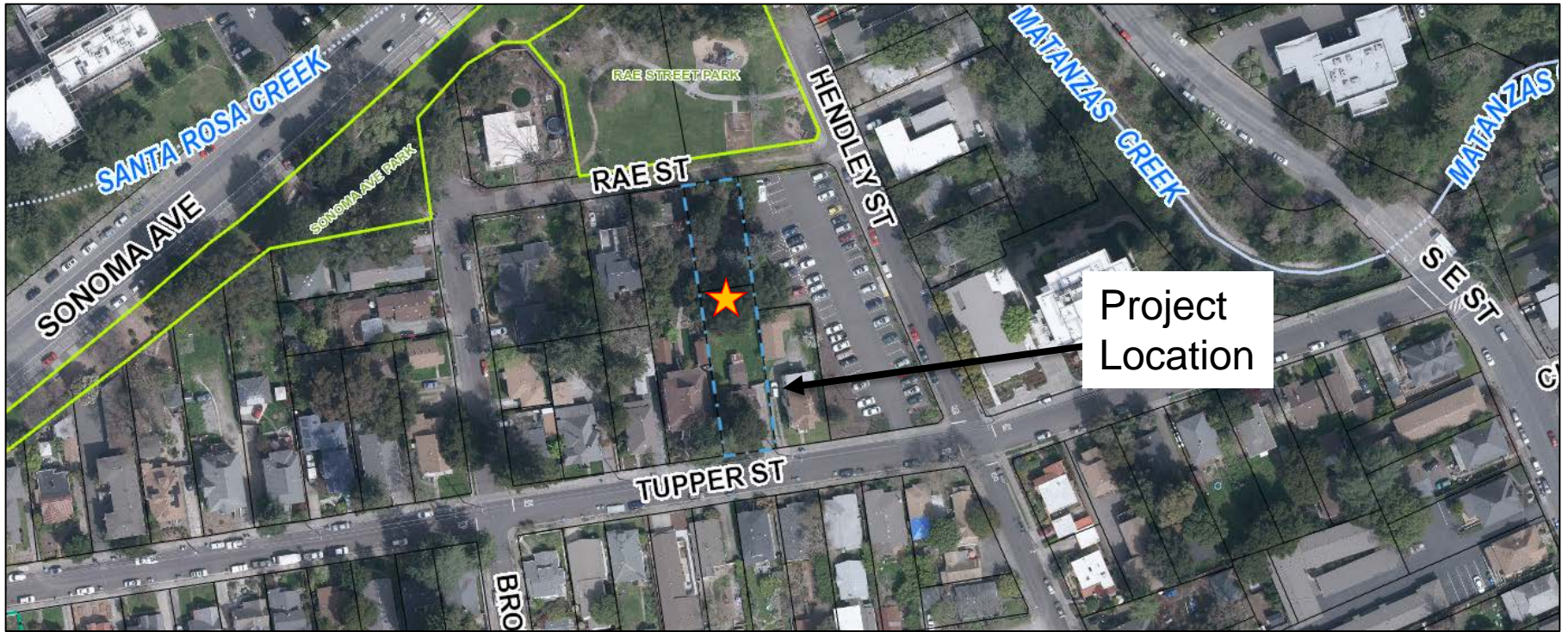
August 7, 2019

Kristinae Toomians
Senior Planner
Planning and Economic Development

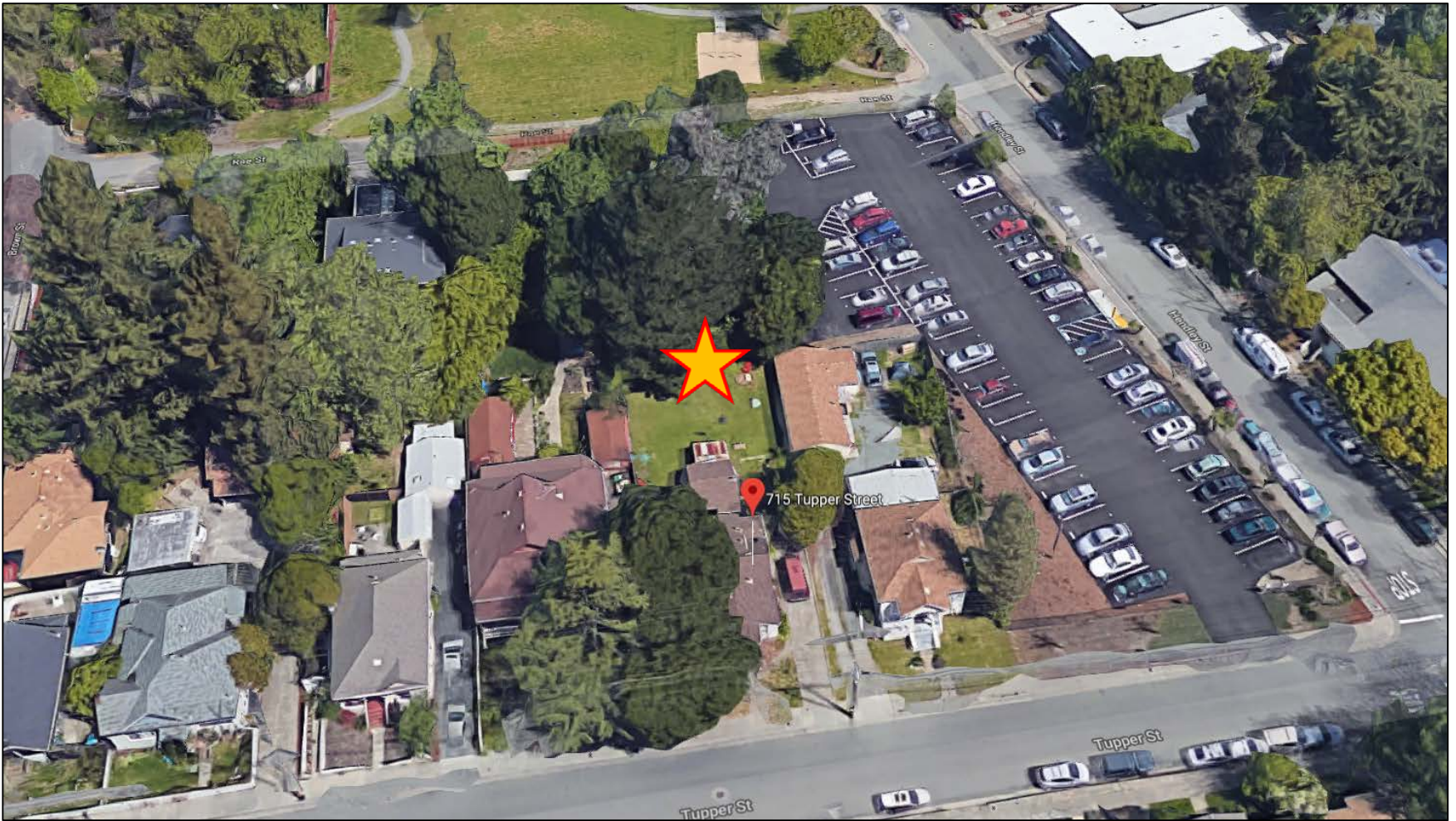
Major Landmark Alteration Permit to:

- Demolish a detached 325-square-foot rear accessory structure, and construct two pairs of duplex units (multi-family units), connected by covered carports, behind an existing 821-square-foot dwelling.

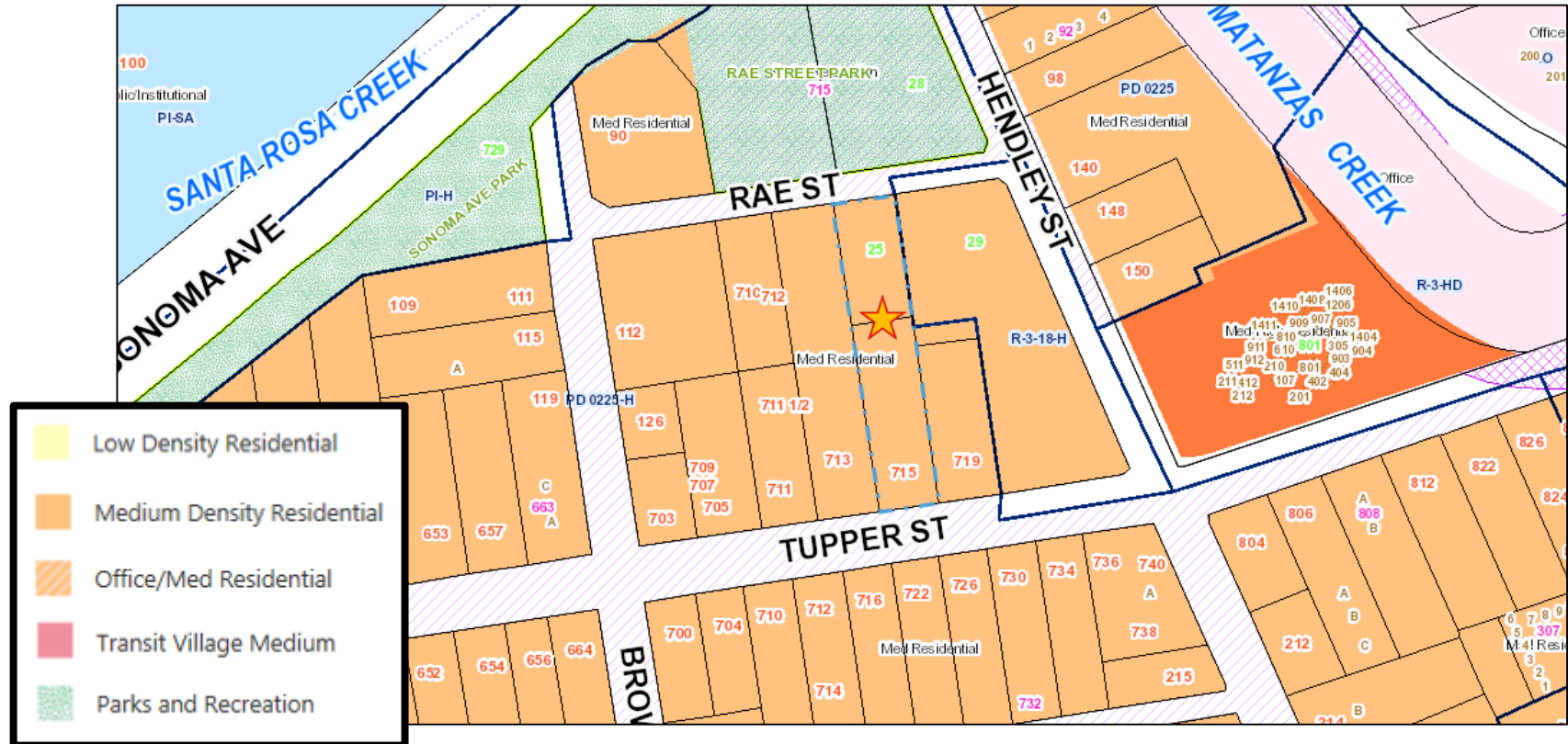
715 Tupper & 25 Rae Streets

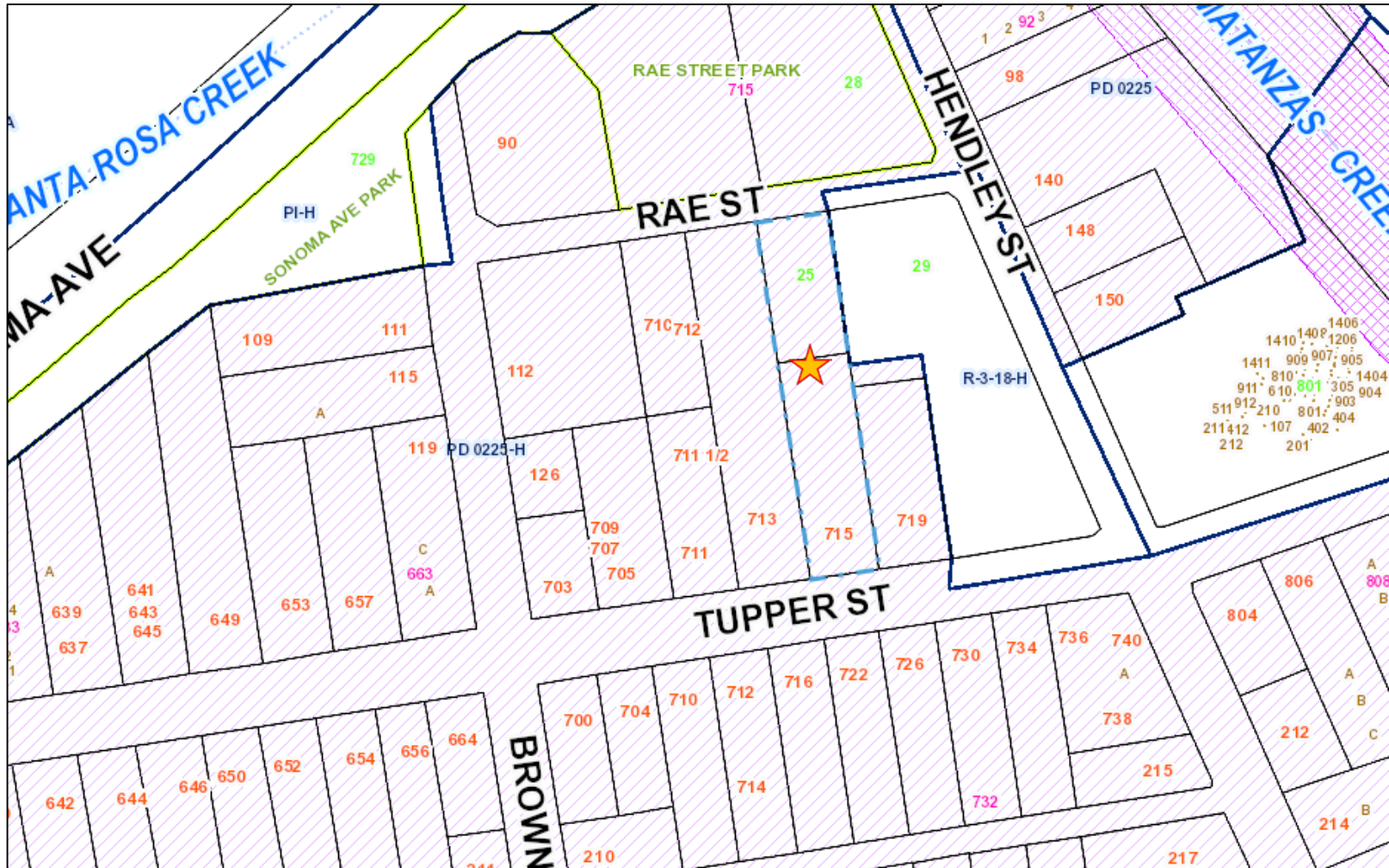


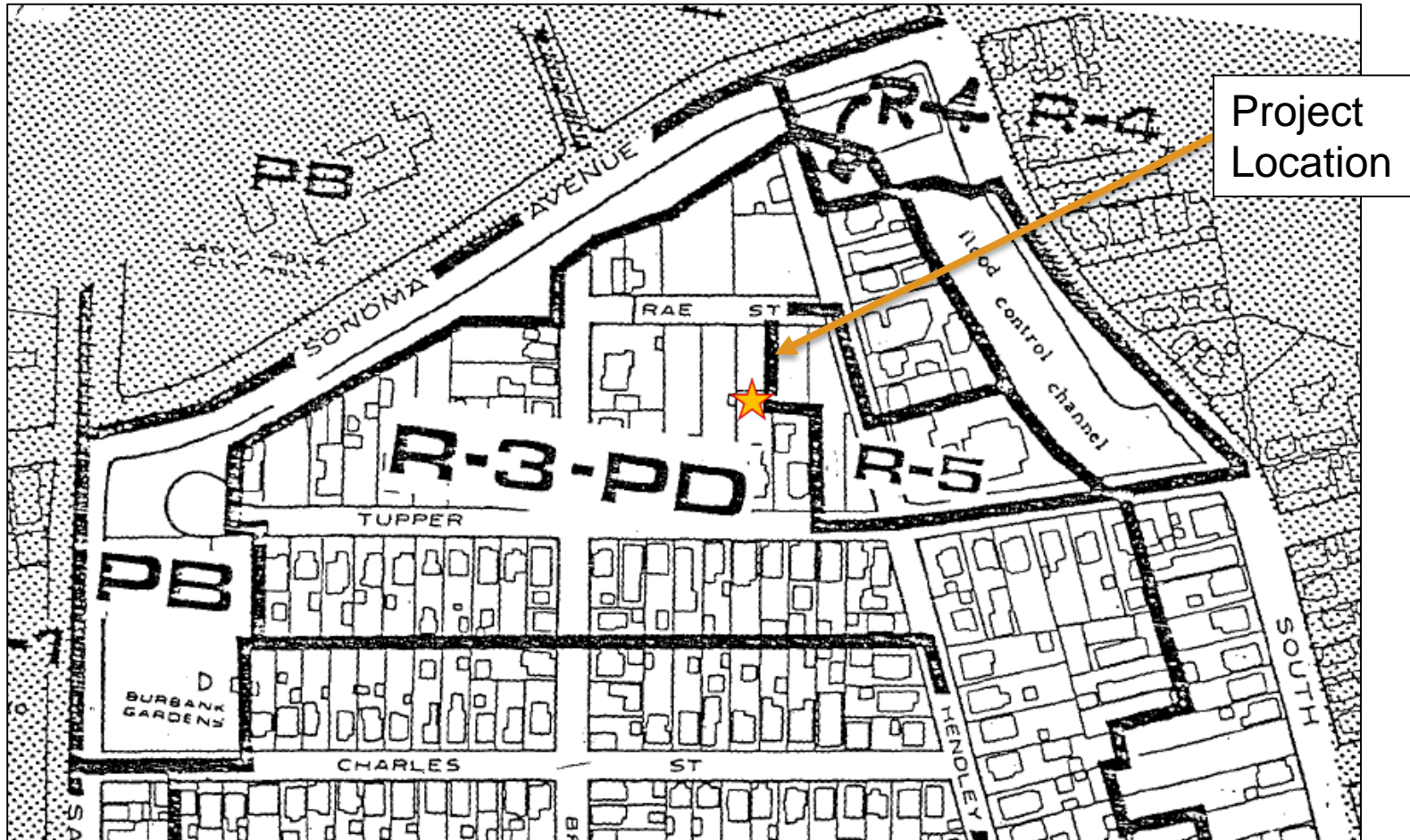
715 Tupper & 25 Rae Streets



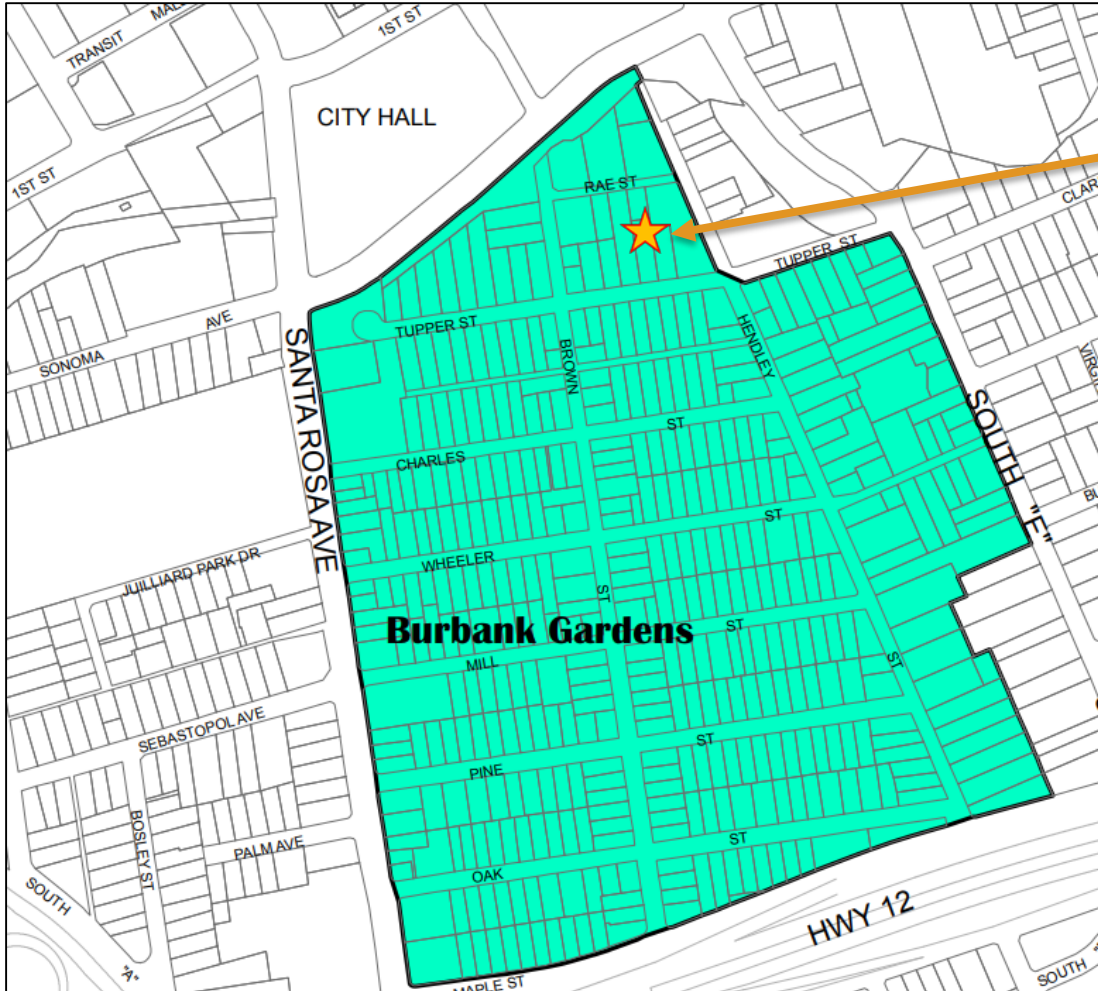
715 Tupper & 25 Rae Streets





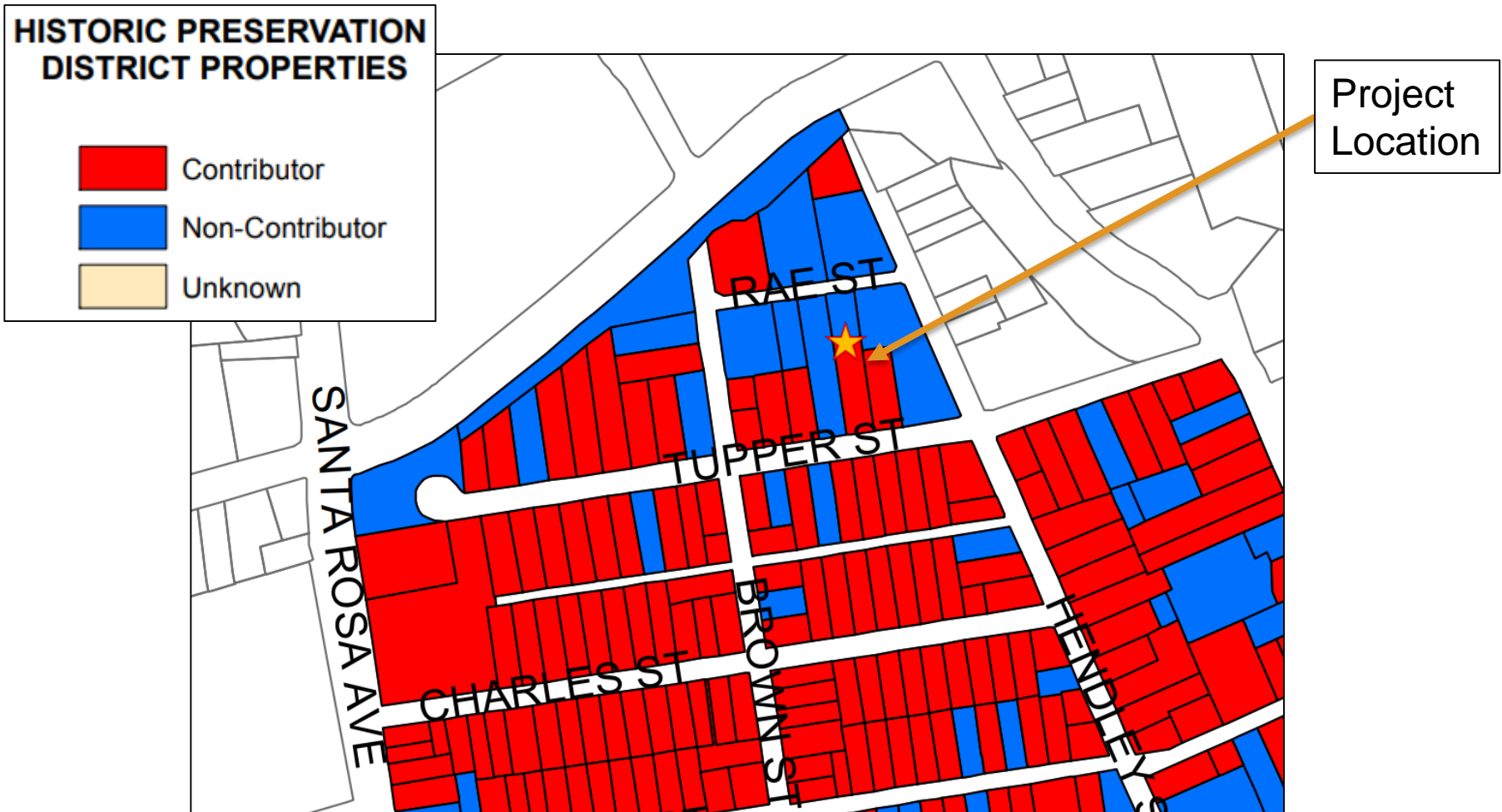


Burbank Gardens Preservation District

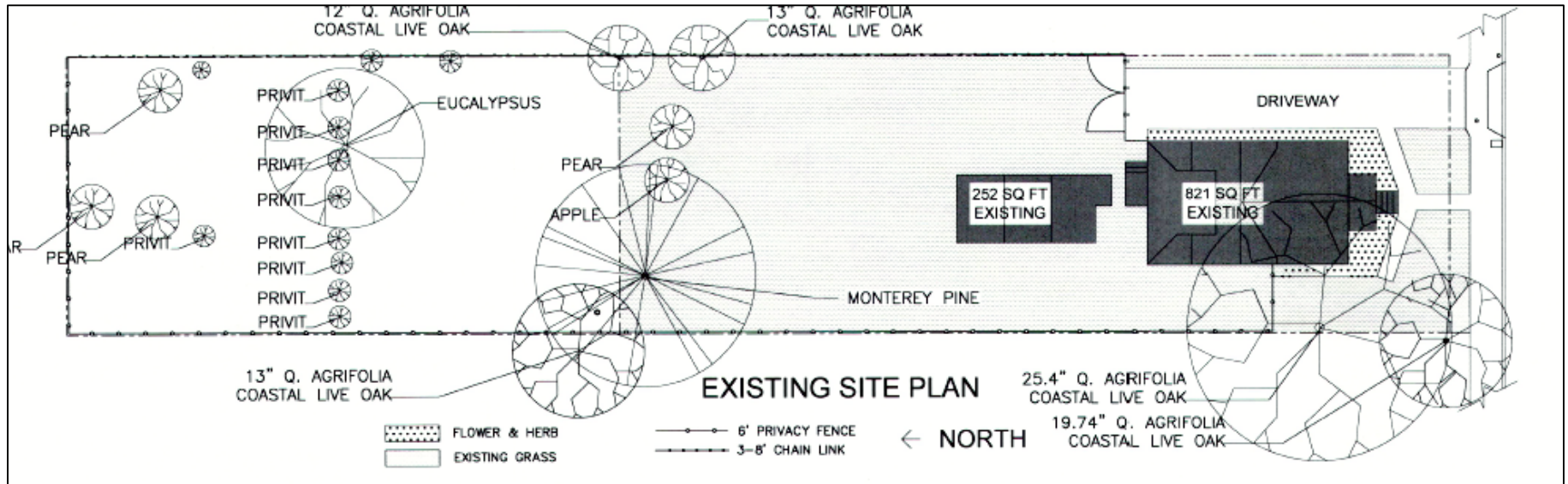


Project
Location

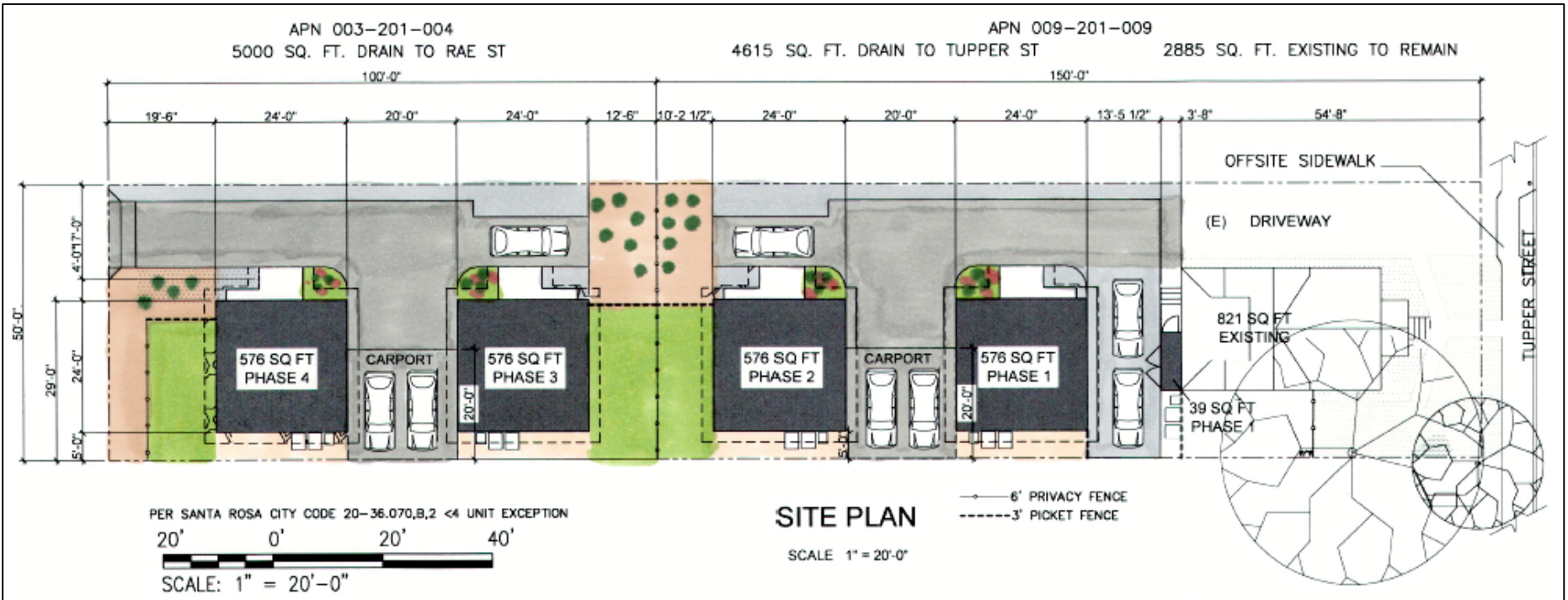
Contributor Analysis



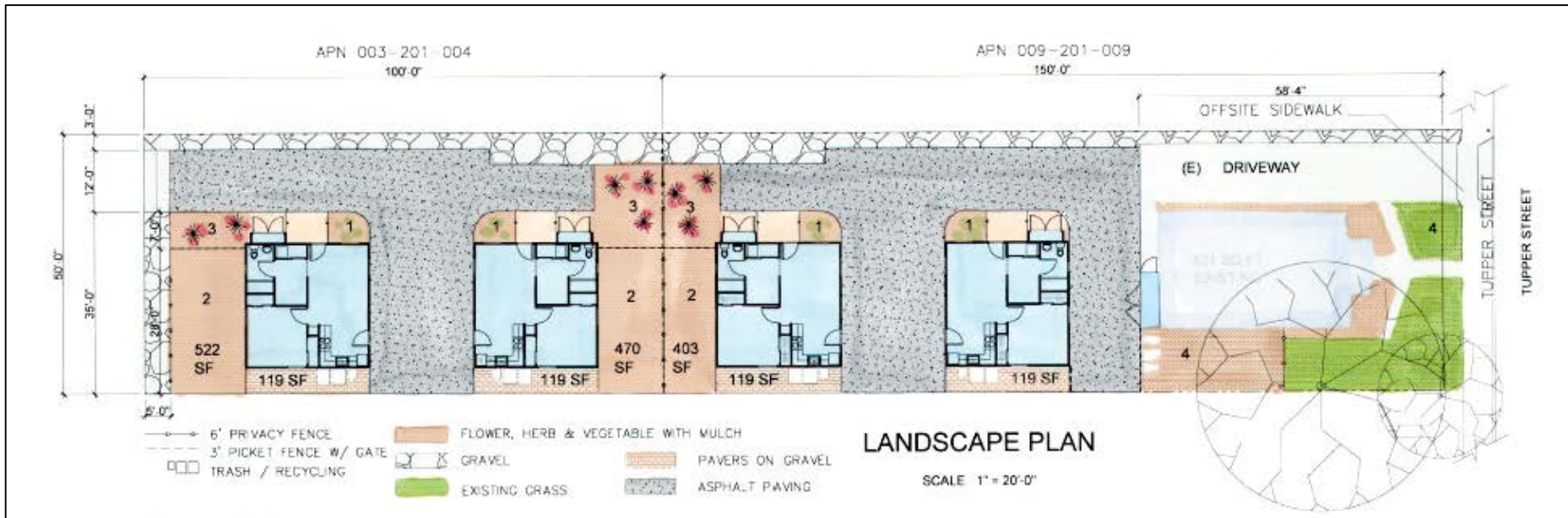
Existing Site Plan



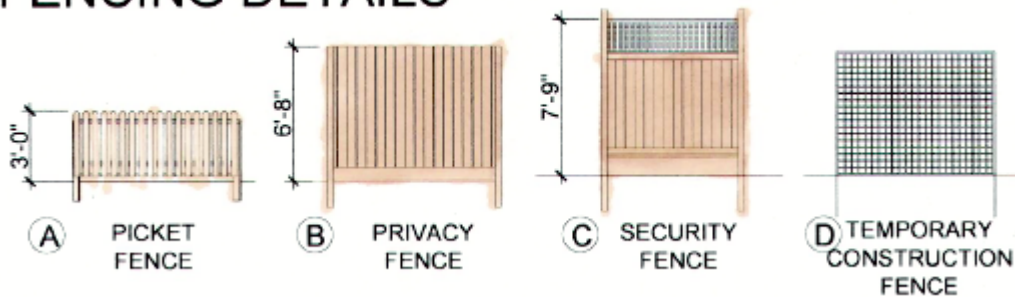
Proposed Site Plan

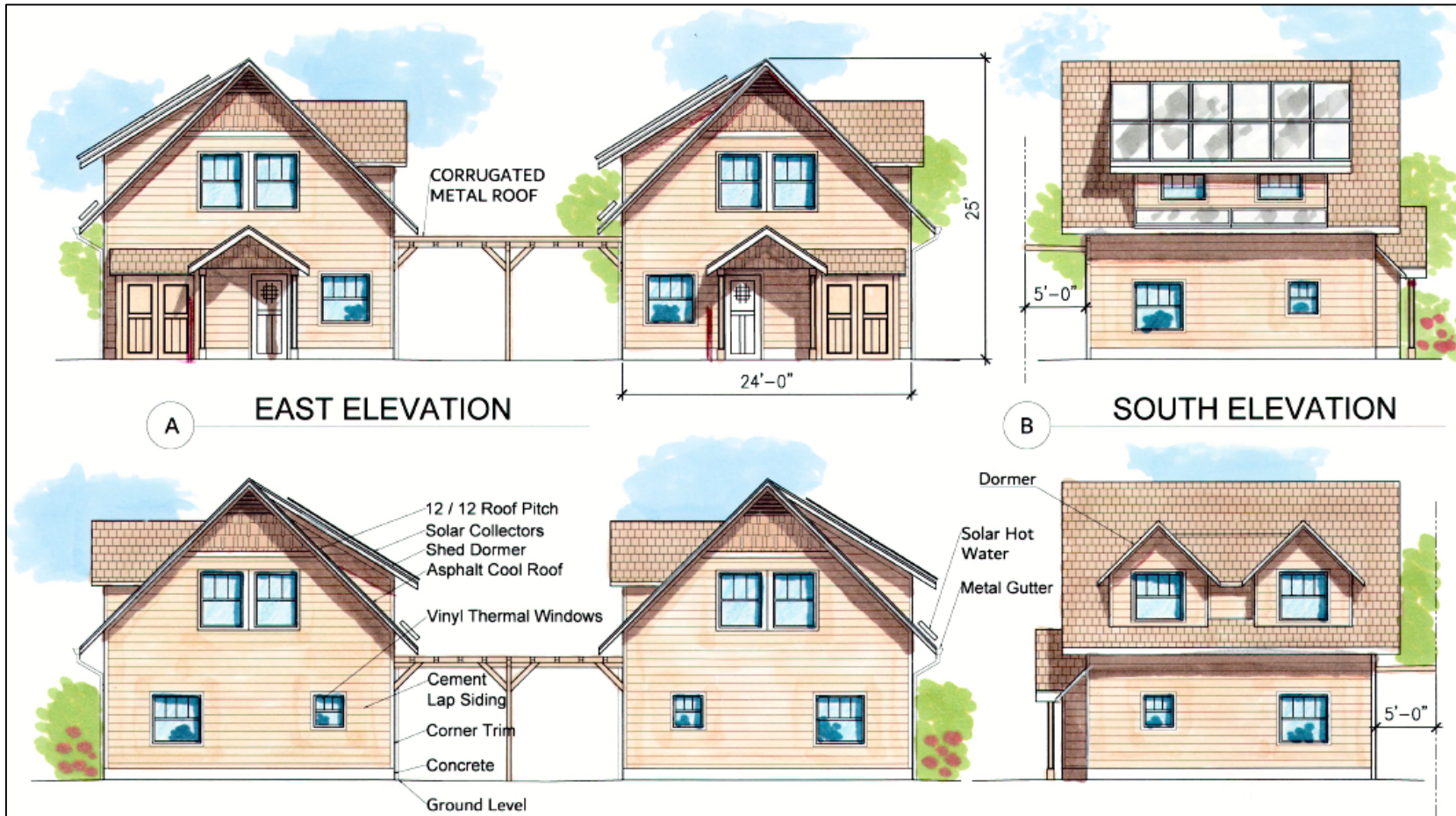


Proposed Landscape Plan



FENCING DETAILS





Kristinae Toomians
Senior Planner
Planning and Economic Development
KToomians@srcity.org
(707) 543-4692

