



# Reimagining CityBus Final Plan

June 7, 2016

# Follow-up from May 24 Public Hearing

---

- Further evaluation of alternatives for Route 11 termini:
  - Eastern terminus near Parker Hill Road
  - Western terminus near Fulton Road
- Additional outreach to Hidden Valley and Appletree Drive neighborhoods
- Evaluation of Route 4A/4B alternatives in Memorial Hospital area and additional outreach

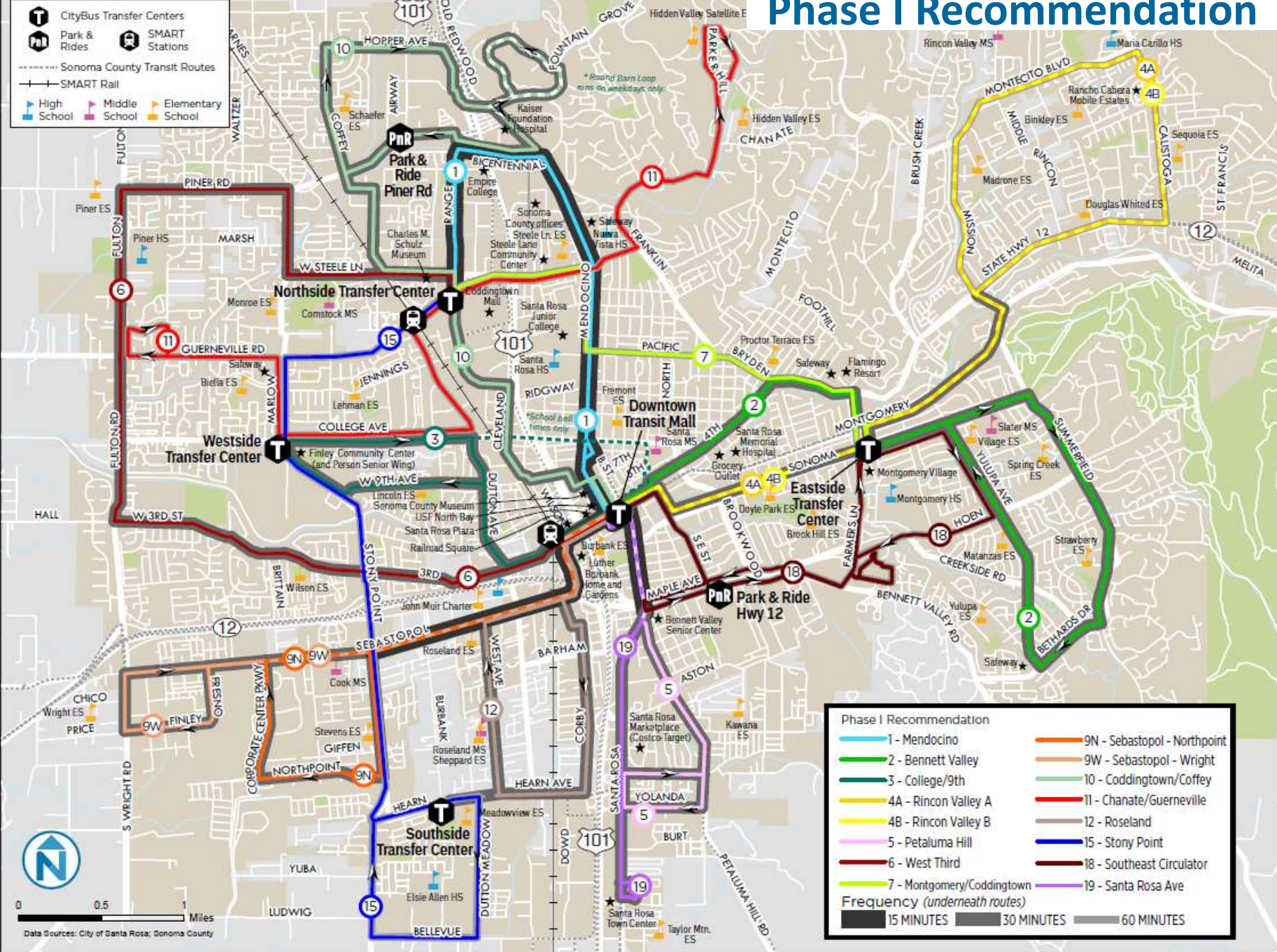
# Today's Item

---

- Seeking action on all elements of the Reimagining CityBus Final Plan except Route 11 termini and Route 4A/4B alignment near Memorial Hospital
- Final Plan includes Draft Plan with the following changes:
  - Adjustment to Route 2 alignment to travel between E Street and Fourth & Pierce Streets via Fourth Street rather than Third Street
  - Adjustment to Route 4A/4B alignment in Montgomery Village to directly serve Eastside Transfer Center on Sonoma Ave.
  - Incorporation of specific recommendation for adjustment to ADA paratransit service area

# Phase I Recommendation

CityBus Transfer Centers  
 Park & Rides  
 SMART Stations  
 Sonoma County Transit Routes  
 SMART Rail  
 High School  
 Middle School  
 Elementary School



**Phase I Recommendation**

1 - Mendocino	9N - Sebastopol - Northpoint
2 - Bennett Valley	9W - Sebastopol - Wright
3 - College/9th	10 - Coddington/Coffey
4A - Rincon Valley A	11 - Chanate/Guerneville
4B - Rincon Valley B	12 - Roseland
5 - Petaluma Hill	15 - Stony Point
6 - West Third	18 - Southeast Circulator
7 - Montgomery/Coddington	19 - Santa Rosa Ave

**Frequency (underneath routes)**

15 MINUTES	30 MINUTES	60 MINUTES
------------	------------	------------

0 0.5 1 Miles
   
 Data Sources: City of Santa Rosa; Sonoma County

# ADA Paratransit Impacts

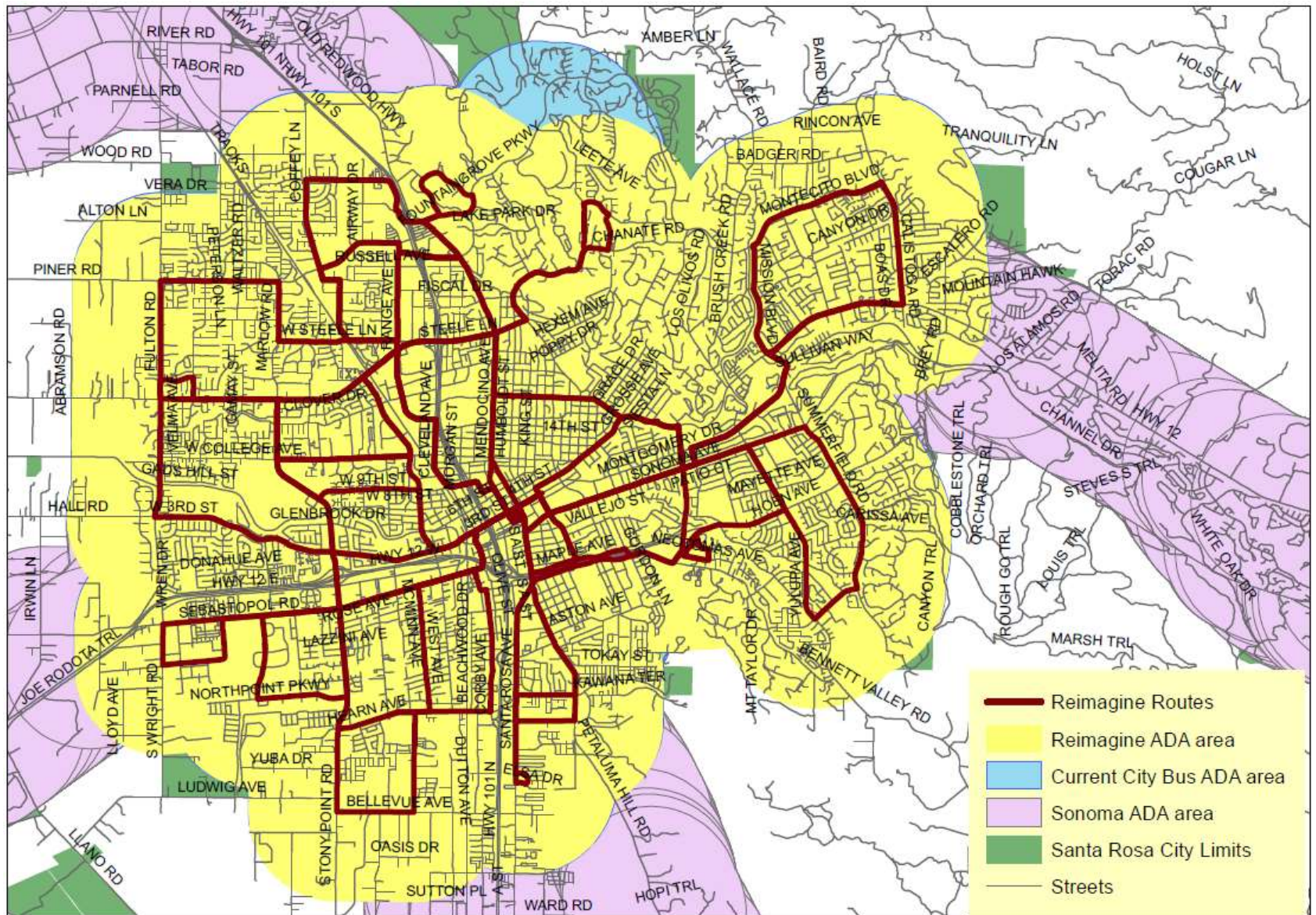
---

- Change in ADA paratransit service area: reduced coverage along Fountaingrove Parkway between Parker Hill Road and Rincon Ridge Road
- Four current paratransit registrants

## Recommendation:

- Continue policy of providing paratransit service within  $\frac{3}{4}$  mile of fixed-routes, but “grandfather in” four affected registrants
- Continue policy of maintaining consistent paratransit service area 7 days/week (no service contraction on weekends)

# ADA Paratransit Service Area—Current and Proposed



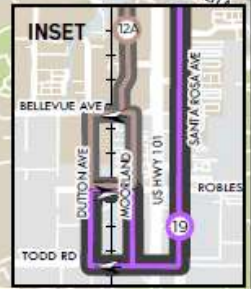
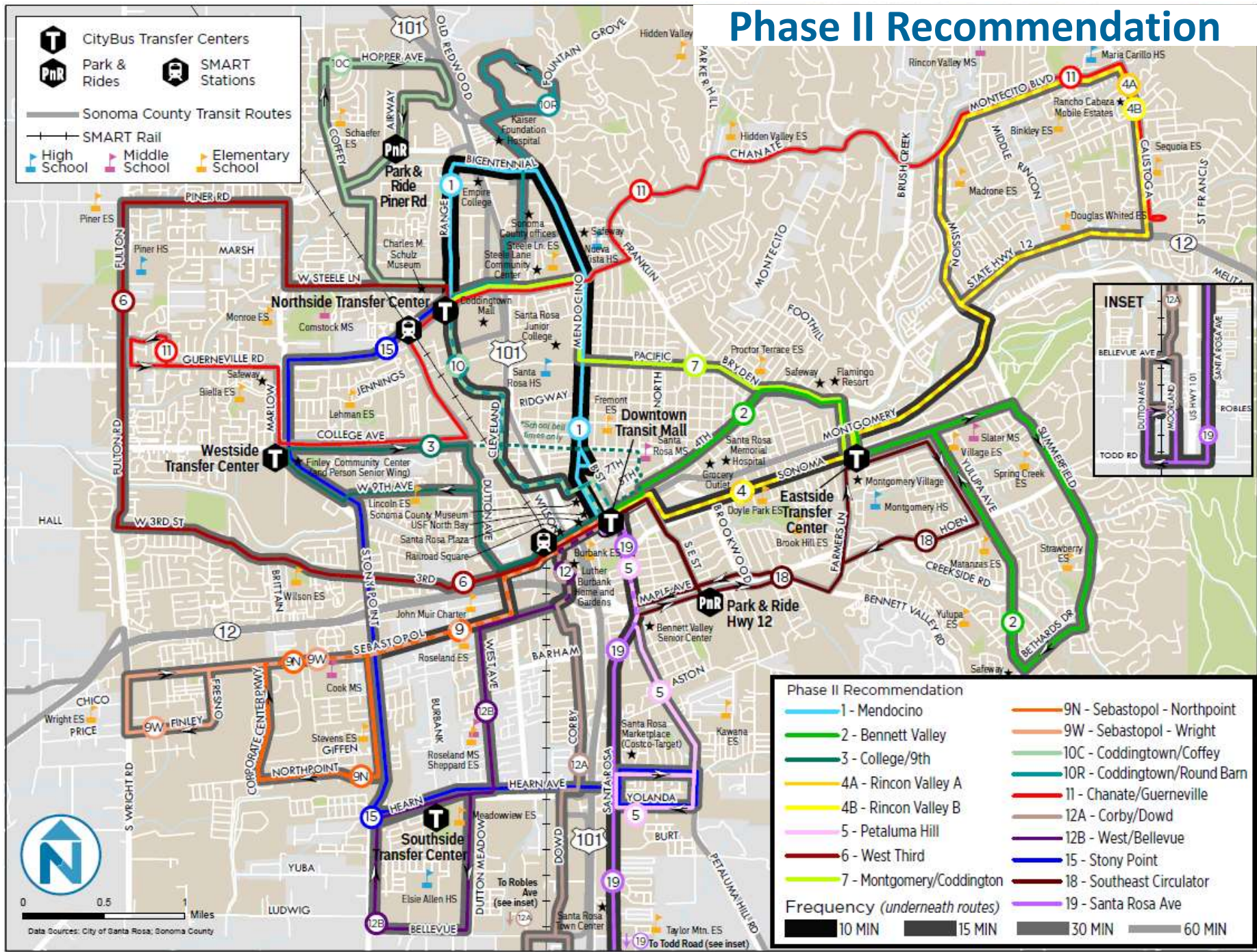
# Recommendation

---

- Adopt, by resolution, the Reimagining CityBus Final Plan with the exception of:
  - Route 11 termini
  - Alignment of Route 4A/4B service in Memorial Hospital area
- Direct staff to bring back final recommendations for Route 11 termini and Route 4A/4B alignment at later date

# Phase II Recommendation

CityBus Transfer Centers  
 Park & Rides  
 SMART Stations  
 Sonoma County Transit Routes  
 SMART Rail  
 High School  
 Middle School  
 Elementary School



**Phase II Recommendation**

1 - Mendocino	9N - Sebastopol - Northpoint
2 - Bennett Valley	9W - Sebastopol - Wright
3 - College/9th	10C - Coddington/Coffey
4A - Rincon Valley A	10R - Coddington/Round Barn
4B - Rincon Valley B	11 - Chanate/Guerneville
5 - Petaluma Hill	12A - Corby/Dowd
6 - West Third	12B - West/Bellevue
7 - Montgomery/Coddington	15 - Stony Point
18 - Southeast Circulator	19 - Santa Rosa Ave

**Frequency (underneath routes)**

--	--	--	--

0 0.5 Miles

Data Sources: City of Santa Rosa; Sonoma County



**Questions?**