



Kelsey Knolls Emergency Vehicle Access Gate Proposed Opening

City Council Meeting
May 1, 2017

Robert Sprinkle, Deputy Director - Traffic
Transportation and Public Works

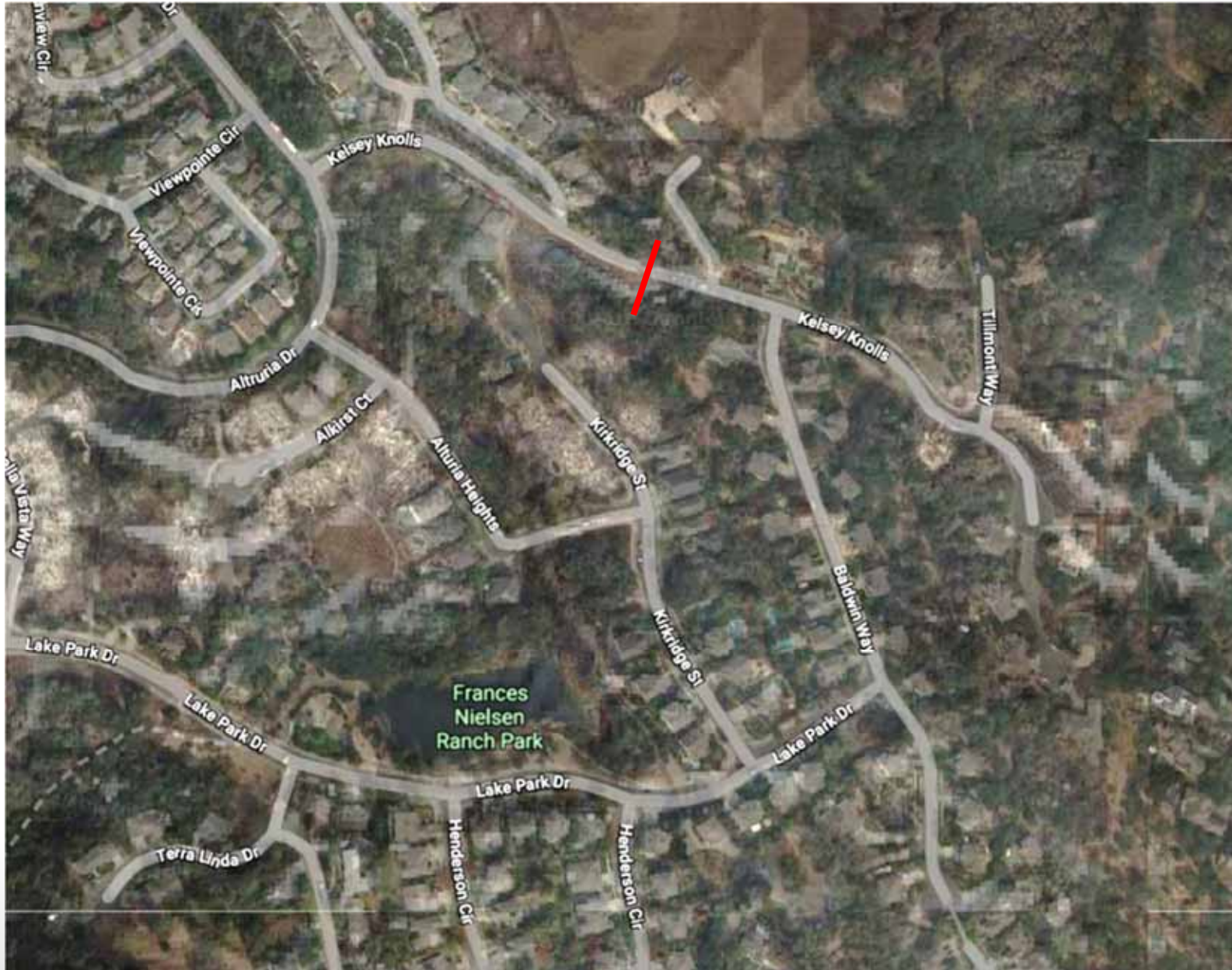
BACKGROUND

- In 1996, with the construction of Nielsen Ranch subdivision, an EVA road was constructed as a second point of access from Kelsey Knolls to Altruria Drive. Plans with City File number 1996-0011.
- In 2001, plans The Lakes of Fountaingrove were submitted as City File number 2003-0086; plans show the section of Kelsey Knolls that had been an EVA, being constructed to a Minor Street standard and the gate and barricades remaining in their current location.
- This development project went to Council for approval on appeal from the Planning Commission and in the minutes, several residents requested the gate remain closed due to their concern with increase in traffic with the street connection being formalized to Altruria Drive.

BACKGROUND

- In 2005, the City Engineer signed plans with City File number 2005-0047 Fountain View Unit 4 plans which also shows the existing gate to remain on Kelsey Knolls.
- On March 9, 2018 the City received a letter and petition from several residents requesting the EVA gate on Kelsey Knolls be removed. Their letter stated that they feel the gate is an impediment for the neighborhood in the event of an emergency and strongly believe the gate should be removed. The petition was signed by 49 residents representing 33 properties.
- A letter was sent to the area residents request feedback relating to the possibility of removing the gate.
- On April 18, 2018 a petition was received requesting the gate remain closed or at least study the impacts of traffic by temporarily opening the gate.

Map



ANALYSIS



Kelsey Knolls EVA gate looking west towards Altruria

ANALYSIS



Kelsey Knolls looking east towards Baldwin Way

ANALYSIS

- Kelsey Knolls has been constructed to a Minor Street standard.
- Transportation and Public Works, the Fire Department and the Police Department have no objections to removing the gate.
- After receipt of two petitions and solicitation for feedback on the gate removal, 36 properties support the gate removal and 4 properties would like the gate to remain.
- Baseline traffic counts have been taken on Baldwin Way for future comparison.
- It is proposed that the gate be opened for 3-4 months, with appropriate signing and striping for a signal lane access in order to evaluate the potential impacts traffic may have.
- Following this evaluation period the item would return to Council for a final determination.

RECOMMENDATION

- It is recommended by the Transportation and Public Works Department that Council, by resolution, approve the opening of the Emergency Vehicle Access(EVA) Gate on Kelsey Knolls between Altruria Drive and Baldwin Way, opening Kelsey Knolls to through traffic to evaluate traffic impacts.

Map

