

NOTES

1. CONTRACTOR SHALL FIELD VERIFY ALL DIMENSIONS.
2. CONTRACTOR SHALL MAINTAIN A 10'-0" MINIMUM SEPARATION BETWEEN THE PROPOSED GPS UNIT, TRANSMITTING ANTENNAS AND EXISTING GPS UNITS.
3. PROPOSED WORK IS COMPLIANT WITH 6409(c) ELIGIBILITY FACILITIES REQUEST CRITERIA



5701 SOUTH SANTA FE DRIVE
LITTLETON, CO 80120



2840 HOWE ROAD, SUITE E
MARTINEZ, CA 94553
www.TheCBRGroup.com

IT IS A VIOLATION OF LAW FOR ANY PERSON,
UNLESS THEY ARE ACTING UNDER THE DIRECTION
OF A LICENSED PROFESSIONAL ENGINEER,
TO ALTER THIS DOCUMENT.

DRAWN BY:	CHECKED BY:	APPROVED BY:
JDL/IK	---	---

RFDS REV #: 11/17/2021 REV 3

ZONING
DOCUMENTS

SUBMITTALS		
REV	DATE	DESCRIPTION
A	11/22/2021	90%ZD'S ISSUED FOR REVIEW
B	11/29/2021	100% ZONING DRAWINGS

A&E PROJECT NUMBER
SFSF000280A

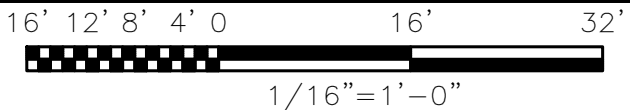
DISH Wireless L.L.C.
PROJECT INFORMATION

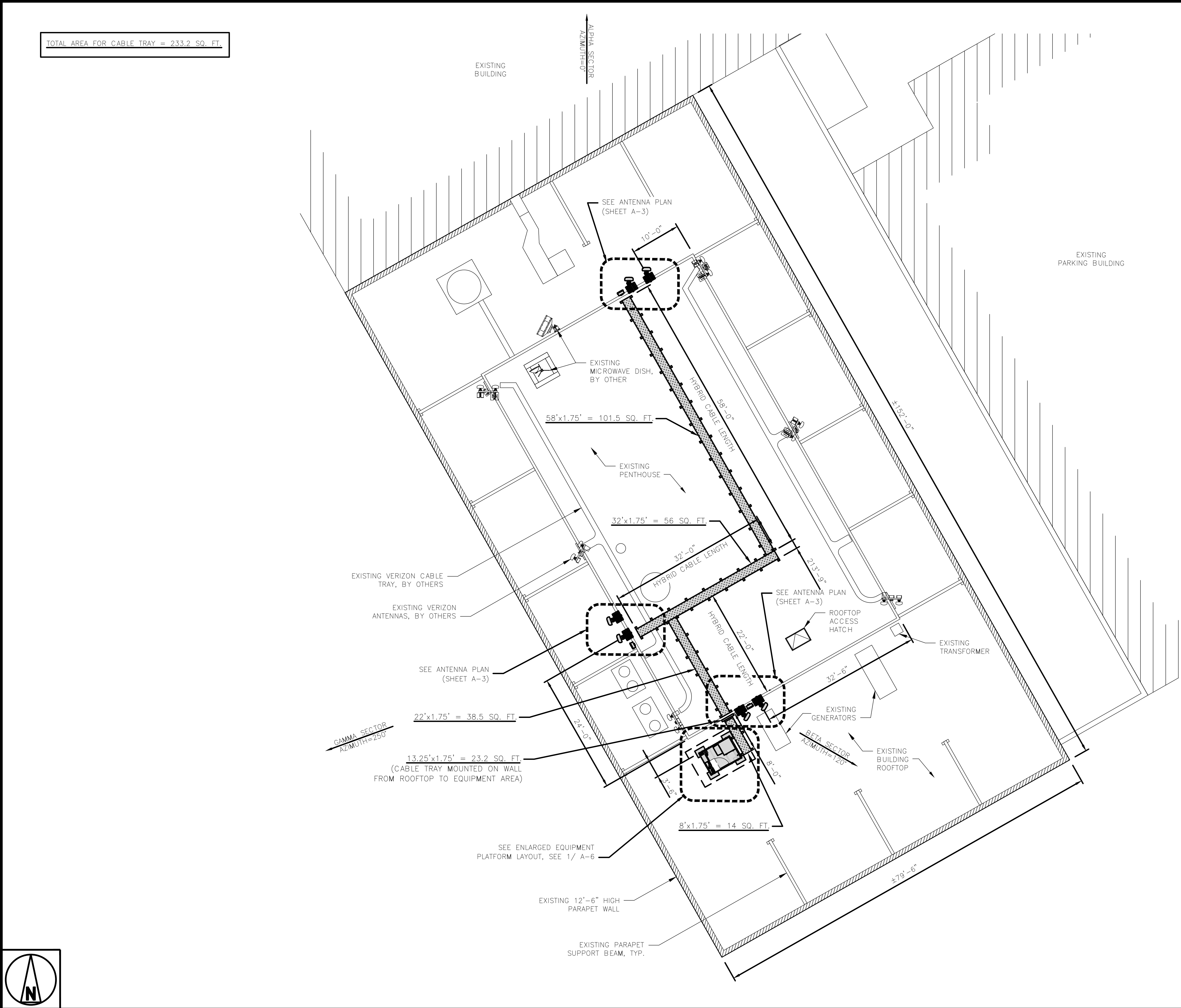
SFSF000280A
50 OLD COURTHOUSE SQ.
SANTA ROSA, CA 95404

SHEET TITLE
OVERALL
SITE PLAN

SHEET NUMBER
A-1

OVERALL SITE PLAN





NOTES

1. CONTRACTOR SHALL FIELD VERIFY ALL DIMENSIONS.
2. CONTRACTOR SHALL MAINTAIN A 10'-0" MINIMUM SEPARATION BETWEEN THE PROPOSED GPS UNIT, TRANSMITTING ANTENNAS AND EXISTING GPS UNITS.
3. UTILITY RUBBER MAT TO BE IN STALLED UNDER ALL DISH Wireless L.L.C. EQUIPMENT THAT IS RESTING ON OR AFFIXED TO ROOF MEMBRANE



5701 SOUTH SANTA FE DRIVE
LITTLETON, CO 80120



2840 HOWE ROAD, SUITE E
MARTINEZ, CA 94553
www.TheCBRGroup.com

IT IS A VIOLATION OF LAW FOR ANY PERSON, UNLESS THEY ARE ACTING UNDER THE DIRECTION OF A LICENSED PROFESSIONAL ENGINEER, TO ALTER THIS DOCUMENT.

DRAWN BY: CHECKED BY: APPROVED BY:

JDL/IK --- ---

RFDS REV #: 11/17/2021 REV 3

ZONING DOCUMENTS

SUBMITTALS		
REV	DATE	DESCRIPTION
A	11/22/2021	90%ZD'S ISSUED FOR REVIEW
B	11/29/2021	100% ZONING DRAWINGS

A&E PROJECT NUMBER
SFSF000280A

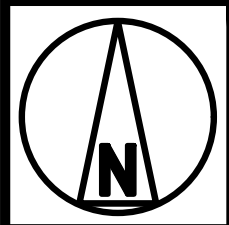
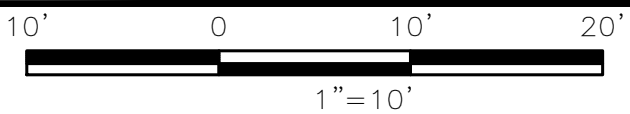
DISH Wireless L.L.C.
PROJECT INFORMATION

SFSF000280A
50 OLD COURTHOUSE SQ.
SANTA ROSA, CA 95404

SHEET TITLE
ENLARGED BUILDING
PLAN

SHEET NUMBER
A-2

ENLARGED BUILDING PLAN



NOTES

1. CONTRACTOR SHALL FIELD VERIFY ALL DIMENSIONS.
2. ANTENNA SPECIFICATIONS REFER TO ANTENNA SCHEDULE AND TO FINAL CONSTRUCTION RFDS FOR ALL RF DETAILS

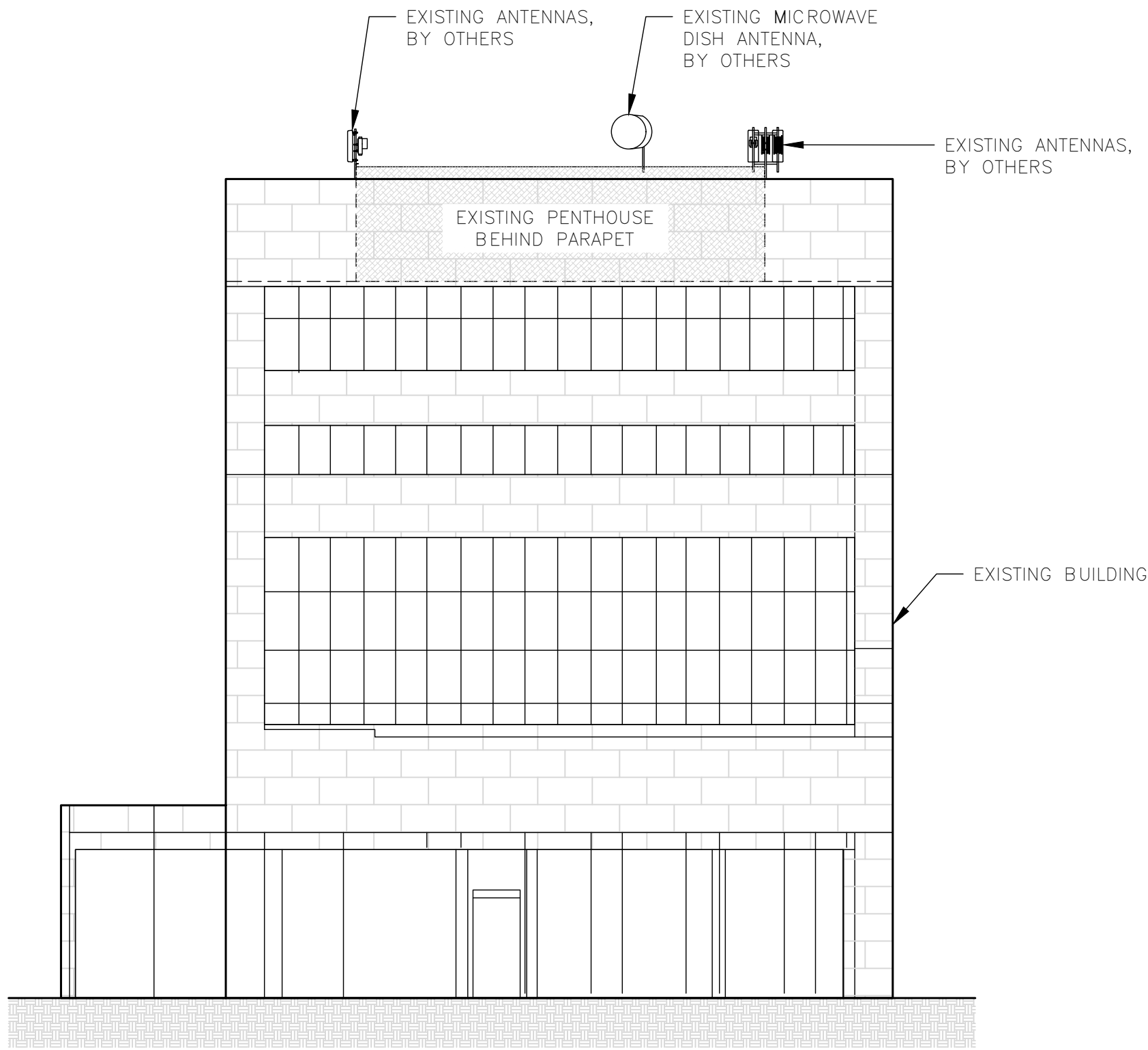
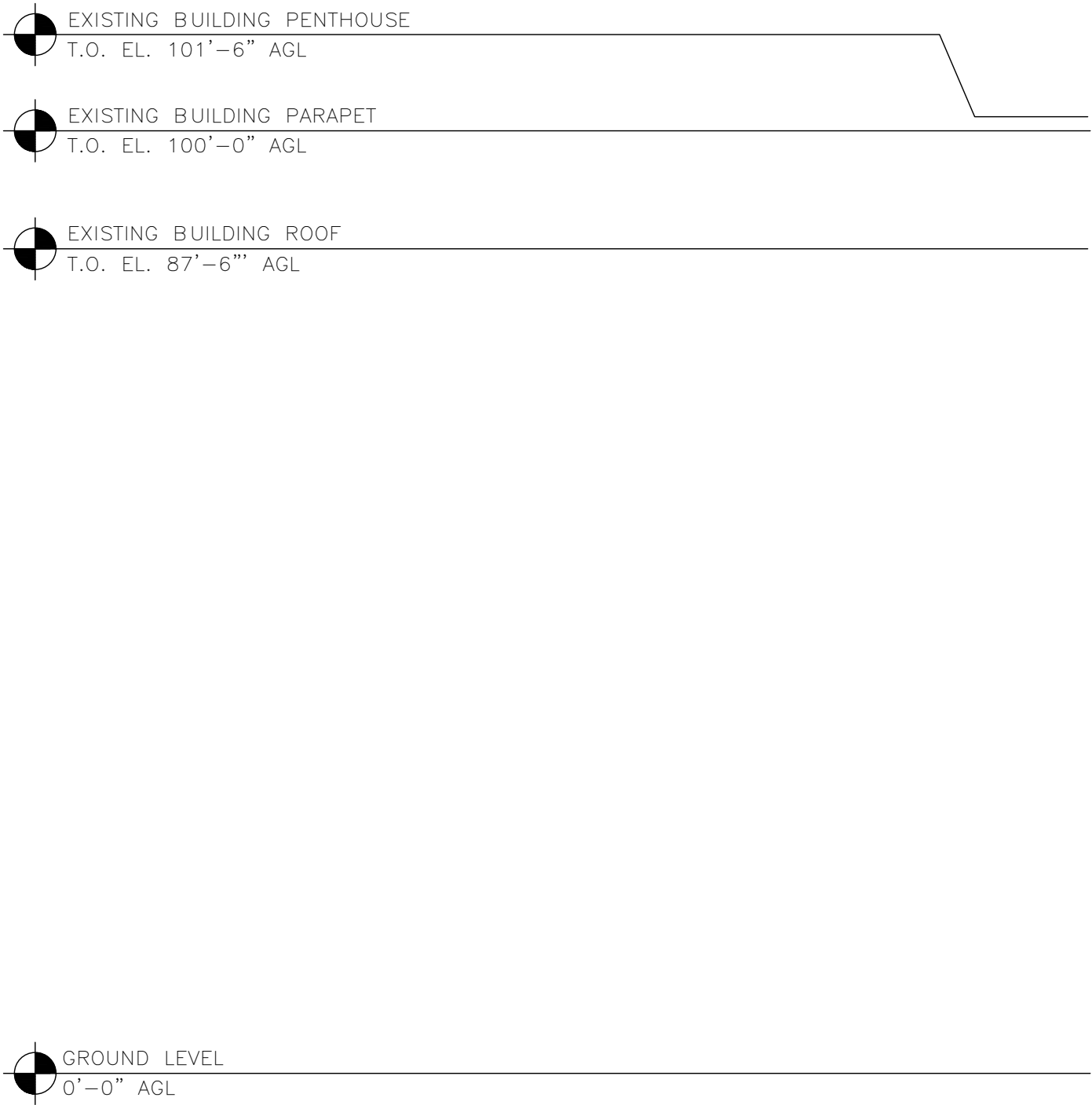
-
- 4.0'x2.5' = 10 SQ. FT.
- PROPOSED ANTENNA MOUNTED ON
PROPOSED WALL MOUNT (TYP OF
2 PER SECTOR, TOTAL 6)
- PROPOSED WALL MOUNTS
(TYP OF 2 PER SECTOR,
TOTAL 6)
- PROPOSED OVP DEVICE
(TYP OF 1 PER SECTOR, TOTAL 3)
- EXISTING PENTHOUSE WALL

TOTAL AREA FOR ANTENNAS = 29.6 SQ. FT.

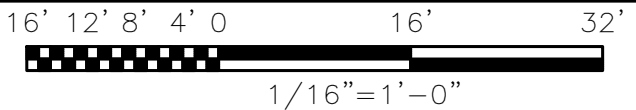


ANTENNA SCHEDULE		NO SCALE	4
------------------	--	----------	---

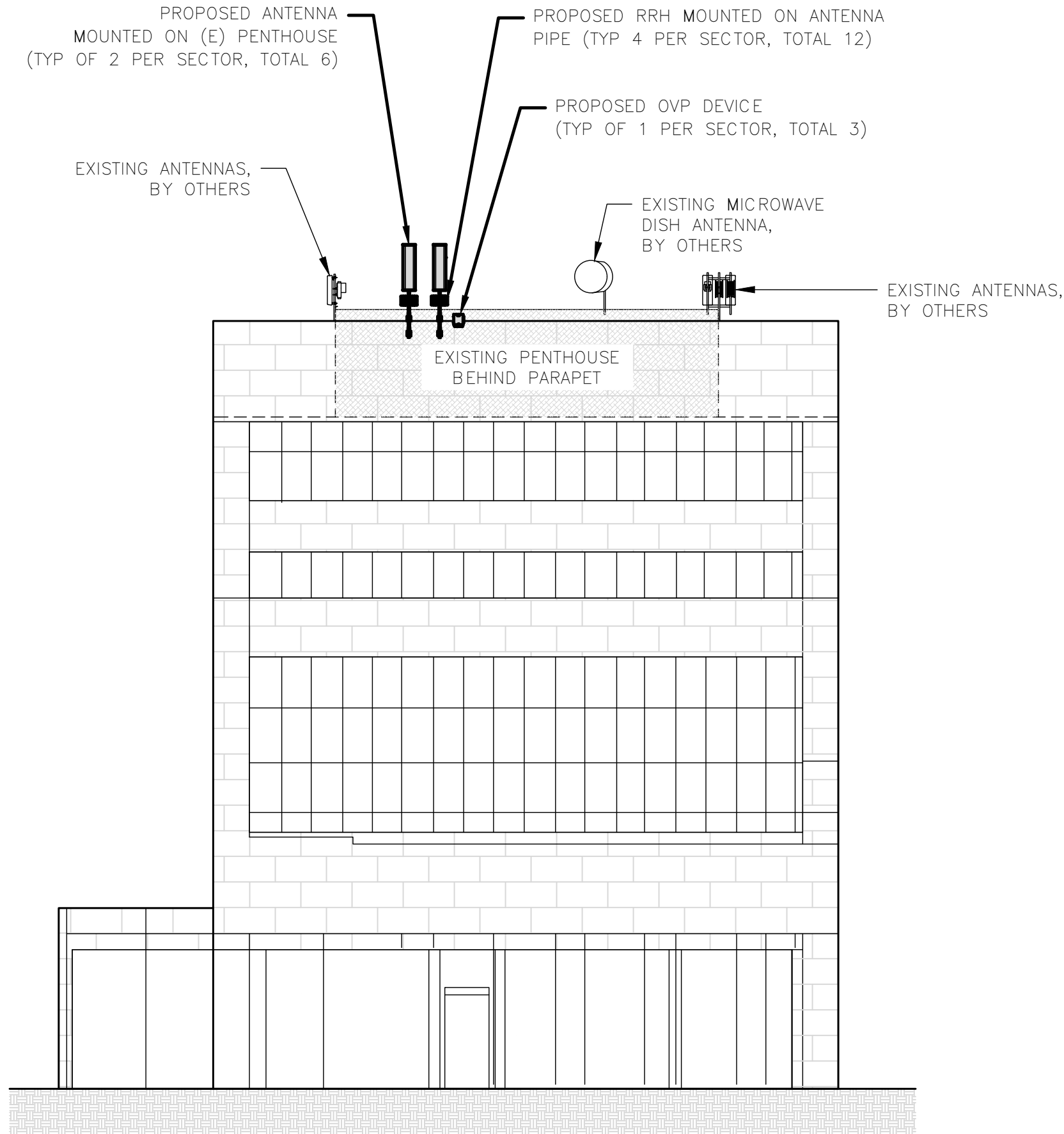
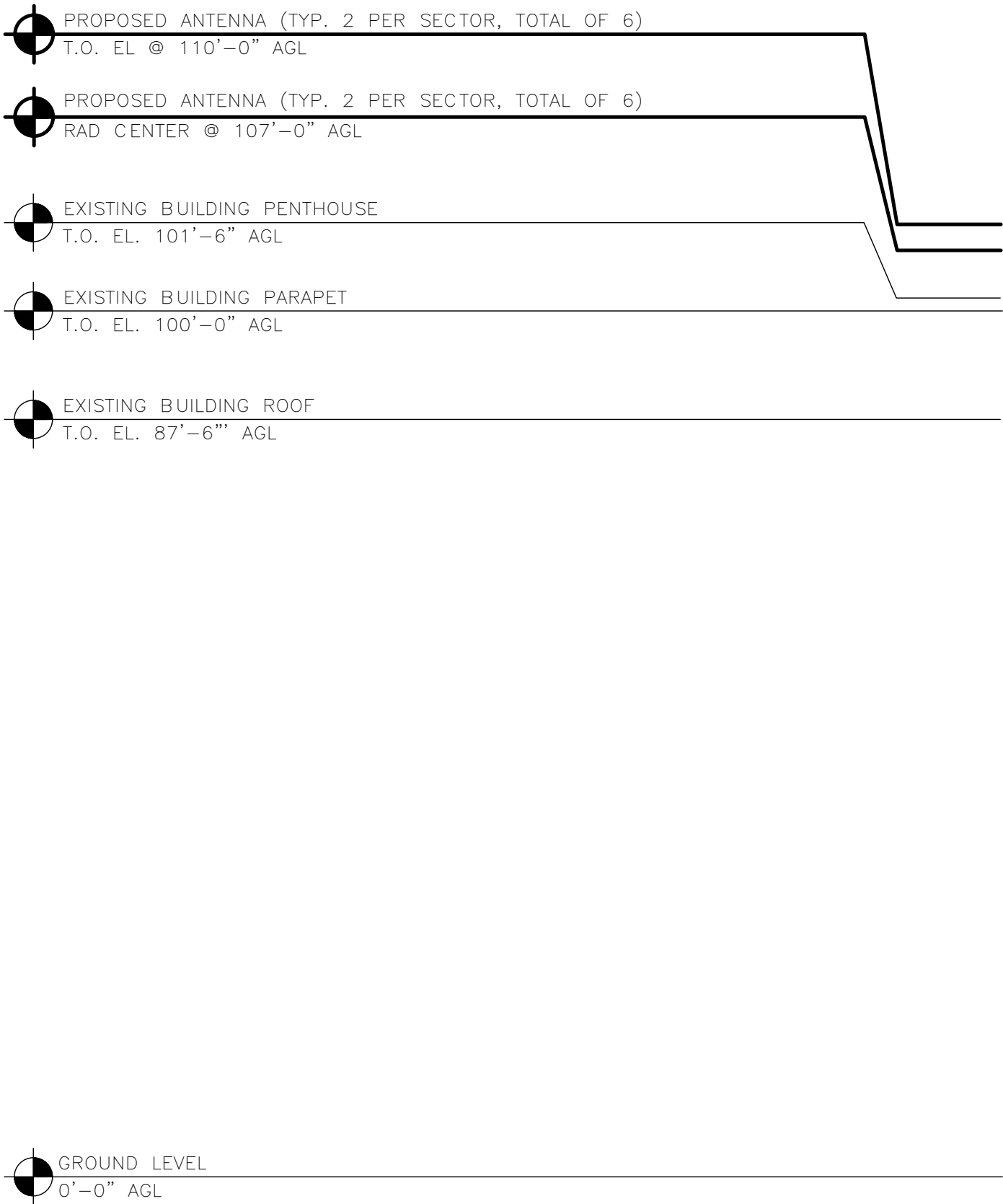
DISH Wireless L.L.C. TEMPLATE VERSION 45 – 10/08/2021



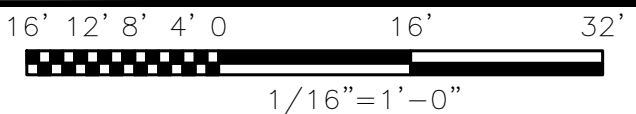
EXISTING NORTHWEST ELEVATION



1



PROPOSED NORTHWEST ELEVATION



2



5701 SOUTH SANTA FE DRIVE
LITTLETON, CO 80120



2840 HOWE ROAD, SUITE E
MARTINEZ, CA 94553
www.TheCBRGroup.com

NOTES

1. CONTRACTOR SHALL FIELD VERIFY ALL DIMENSIONS.
2. CONTRACTOR SHALL MAINTAIN A 10'-0" MINIMUM SEPARATION BETWEEN THE PROPOSED GPS UNIT, TRANSMITTING ANTENNAS AND EXISTING GPS UNITS.

IT IS A VIOLATION OF LAW FOR ANY PERSON, UNLESS THEY ARE ACTING UNDER THE DIRECTION OF A LICENSED PROFESSIONAL ENGINEER, TO ALTER THIS DOCUMENT.

DRAWN BY: CHECKED BY: APPROVED BY:

JDL/IK --- ---

RFDS REV #: 11/17/2021 REV 3

ZONING DOCUMENTS

SUBMITTALS		
REV	DATE	DESCRIPTION
A	11/22/2021	90%ZD'S ISSUED FOR REVIEW
B	11/29/2021	100% ZONING DRAWINGS

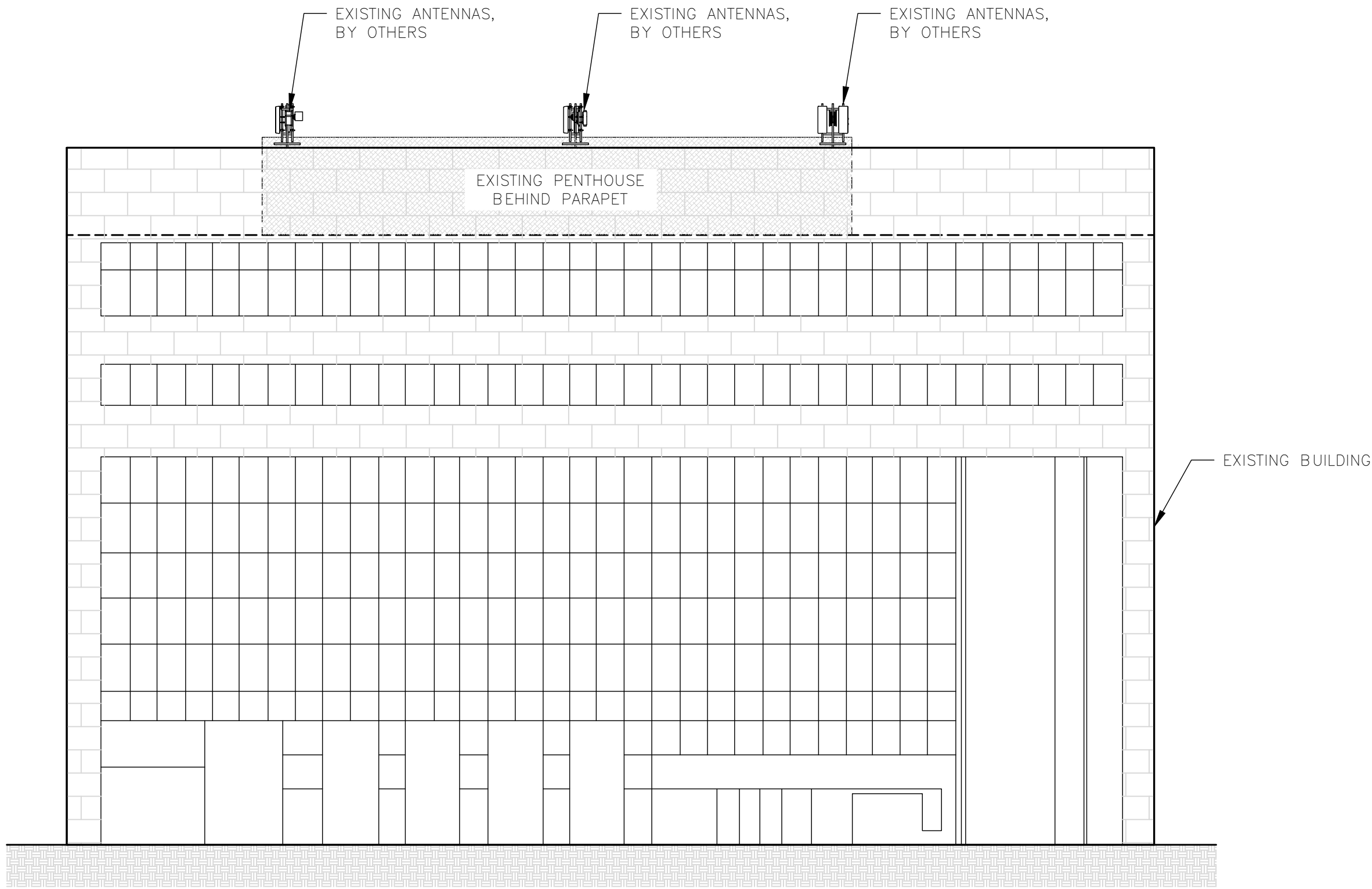
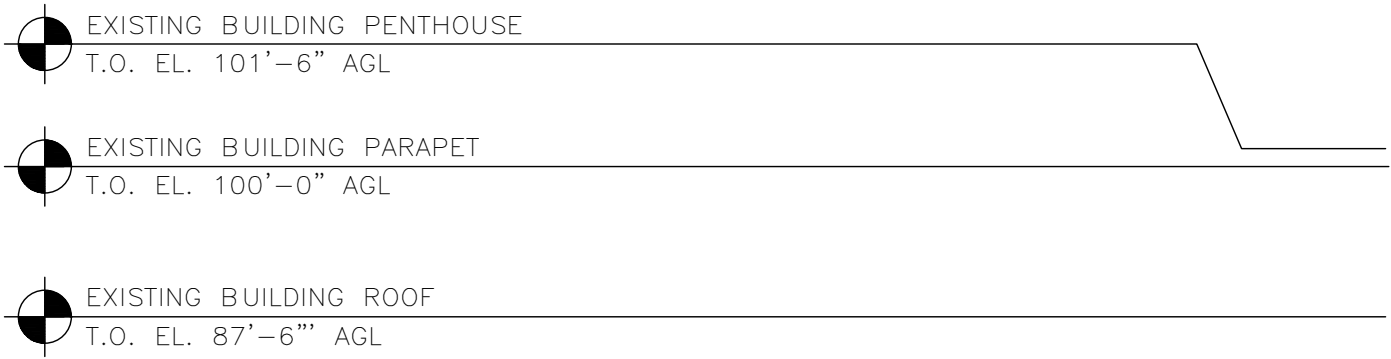
A&E PROJECT NUMBER
SFSF000280A

DISH Wireless L.L.C.
PROJECT INFORMATION

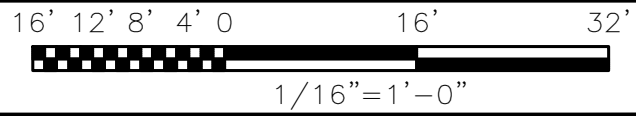
SFSF000280A
50 OLD COURTHOUSE SQ.
SANTA ROSA, CA 95404

SHEET TITLE
NORTHWEST ELEVATIONS

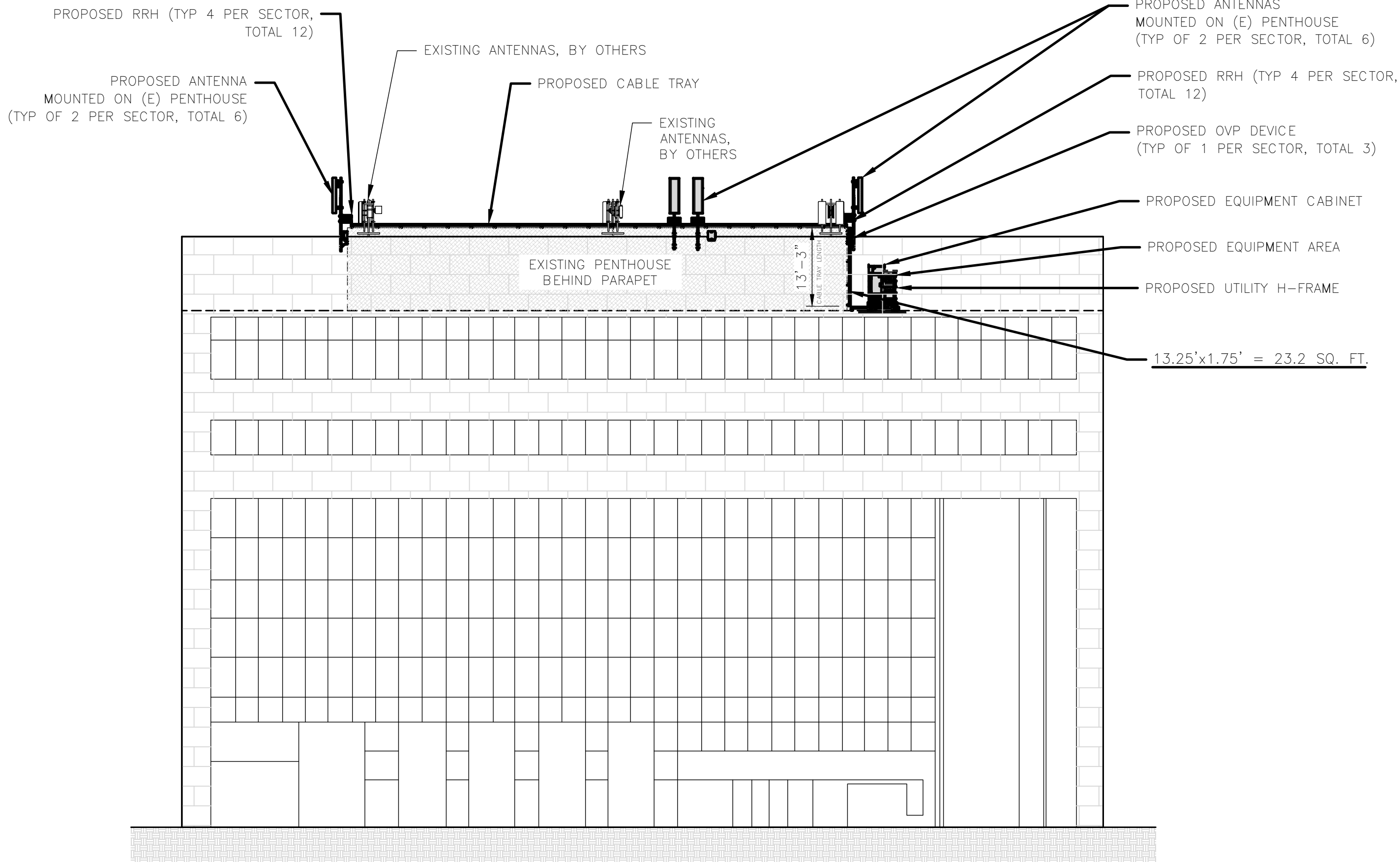
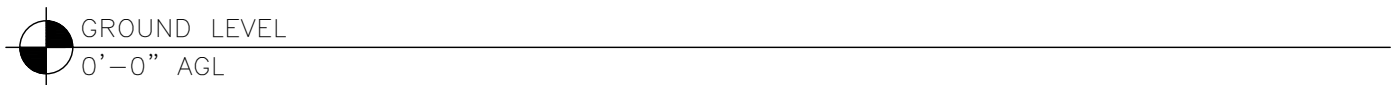
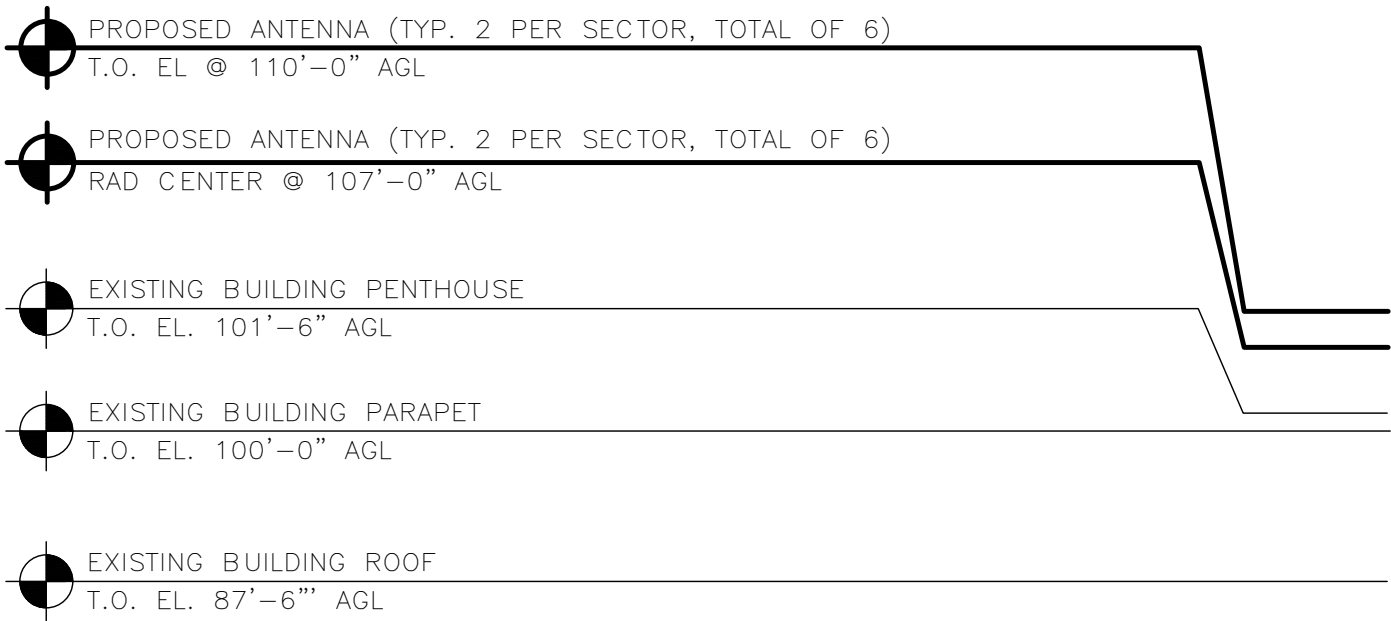
SHEET NUMBER
A-4



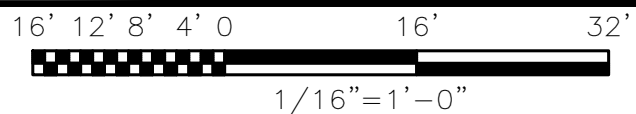
EXISTING SOUTHWEST ELEVATION



1



PROPOSED SOUTHWEST ELEVATION



2

NOTES

- CONTRACTOR SHALL FIELD VERIFY ALL DIMENSIONS.
- CONTRACTOR SHALL MAINTAIN A 10'-0" MINIMUM SEPARATION BETWEEN THE PROPOSED GPS UNIT, TRANSMITTING ANTENNAS AND EXISTING GPS UNITS.



5701 SOUTH SANTA FE DRIVE
LITTLETON, CO 80120



2840 HOWE ROAD, SUITE E
MARTINEZ, CA 94553
www.TheCBRGroup.com

IT IS A VIOLATION OF LAW FOR ANY PERSON, UNLESS THEY ARE ACTING UNDER THE DIRECTION OF A LICENSED PROFESSIONAL ENGINEER, TO ALTER THIS DOCUMENT.

DRAWN BY:	CHECKED BY:	APPROVED BY:
JDL/IK	---	---

RFDS REV #: 11/17/2021 REV 3

ZONING DOCUMENTS

SUBMITTALS		
REV	DATE	DESCRIPTION
A	11/22/2021	90%ZD'S ISSUED FOR REVIEW
B	11/29/2021	100% ZONING DRAWINGS

A&E PROJECT NUMBER
SFSF000280A

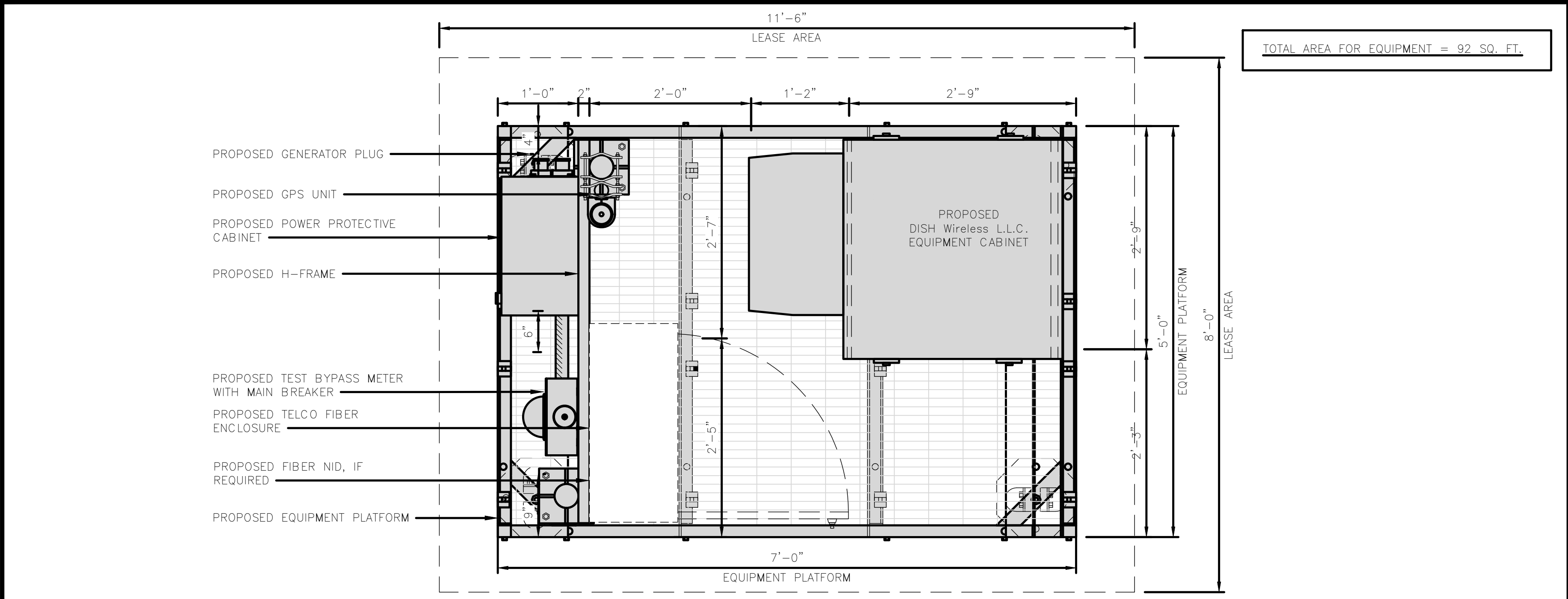
DISH Wireless L.L.C.
PROJECT INFORMATION

SFSF000280A
50 OLD COURTHOUSE SQ.
SANTA ROSA, CA 95404

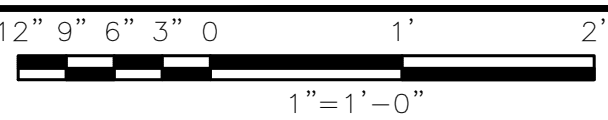
SHEET TITLE
SOUTHWEST
ELEVATIONS

SHEET NUMBER

A-5



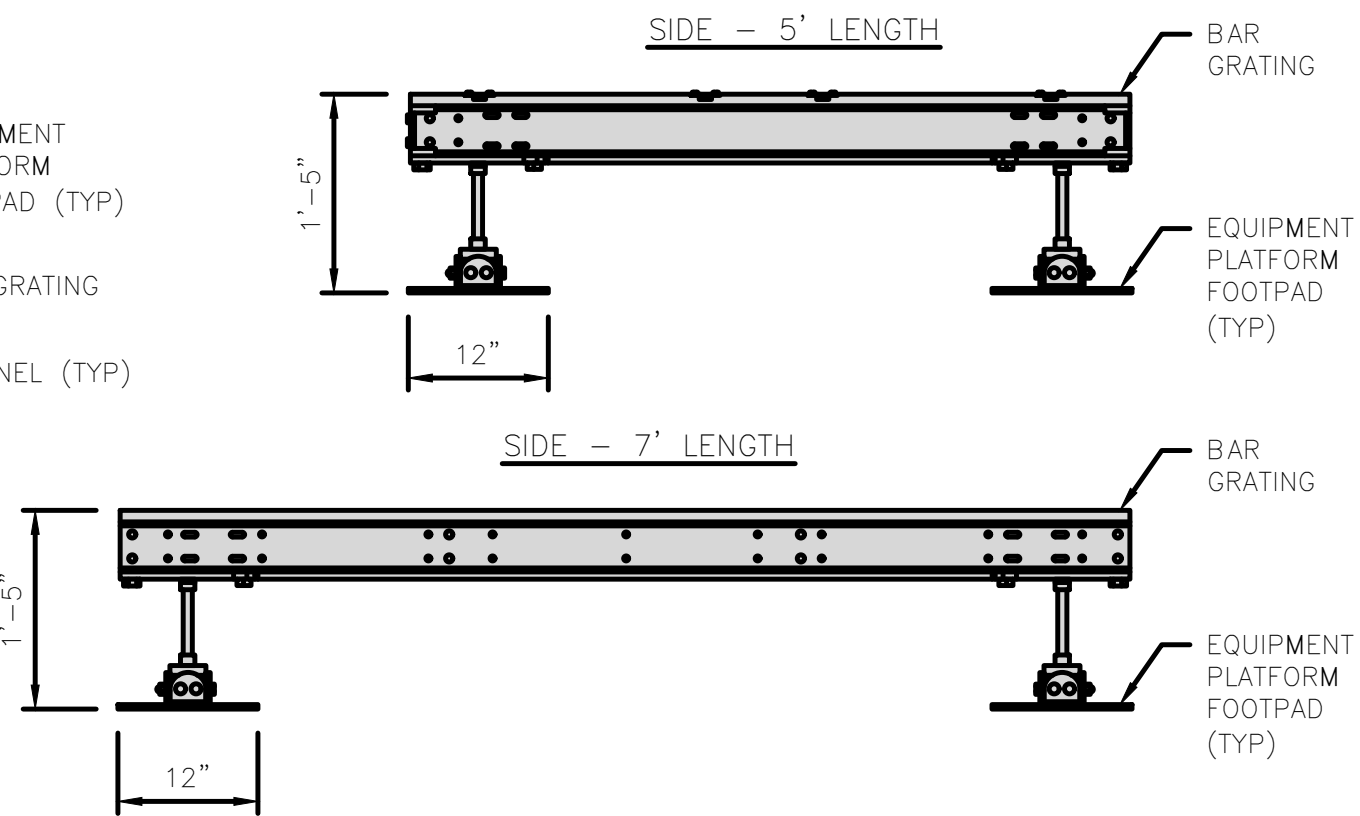
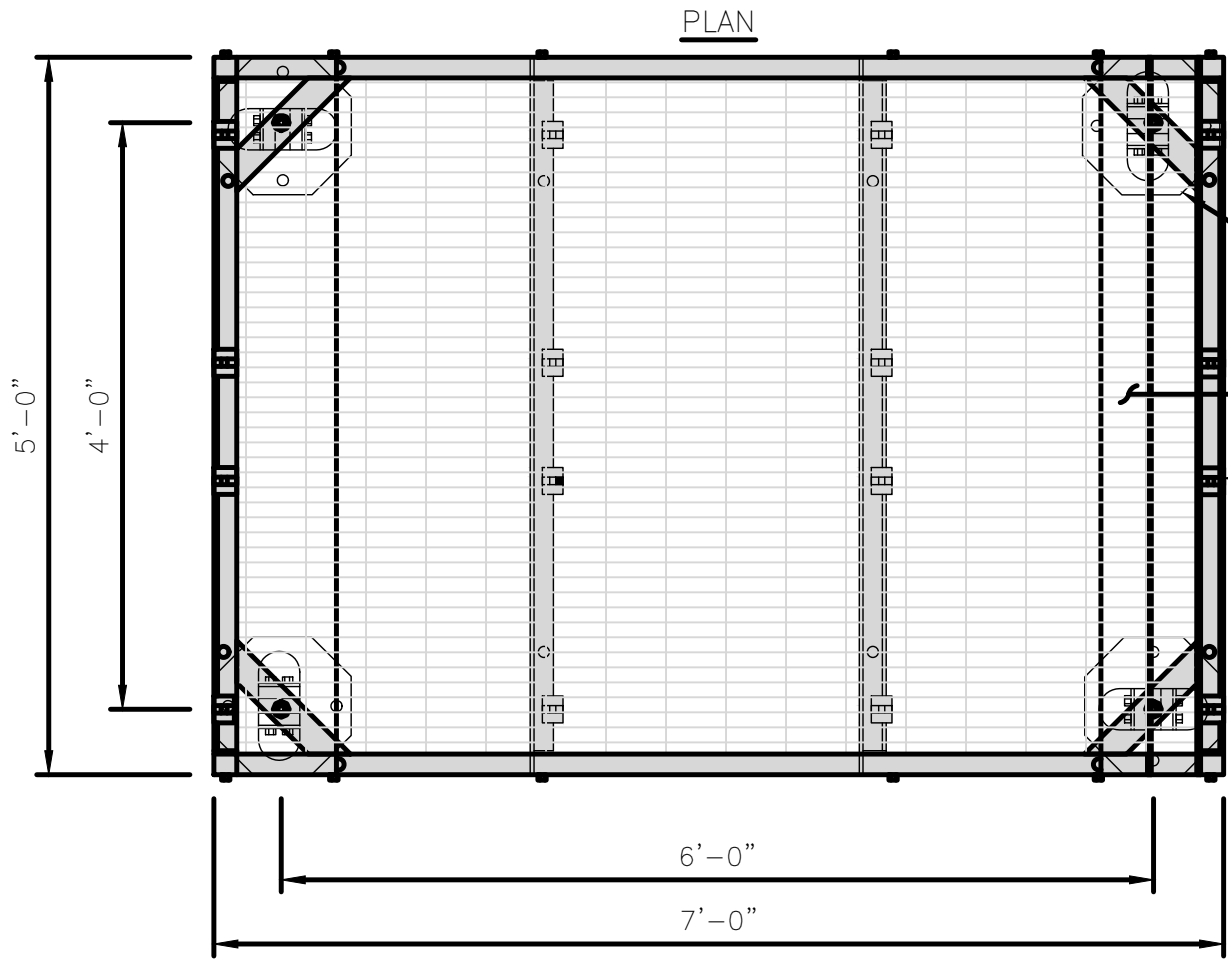
PLATFORM EQUIPMENT PLAN



1

COMMSCOPE MTC4045LP 5X7 PLATFORM	
DIMENSIONS (HxWxD)	16"x84"x60"
TOTAL WEIGHT	423 LBS

NOTE:
GC TO PROVIDE EXTENDED
THREAD FOR PLATFORM IF
REQUIRED HEIGHT EXCEEDS 17"

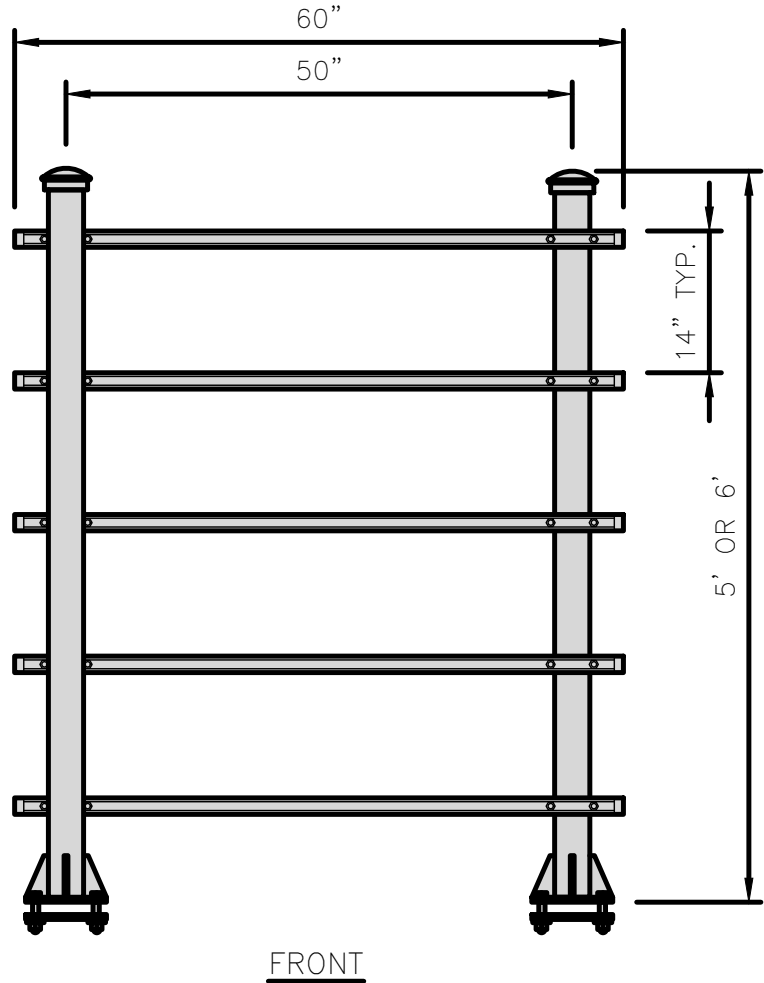
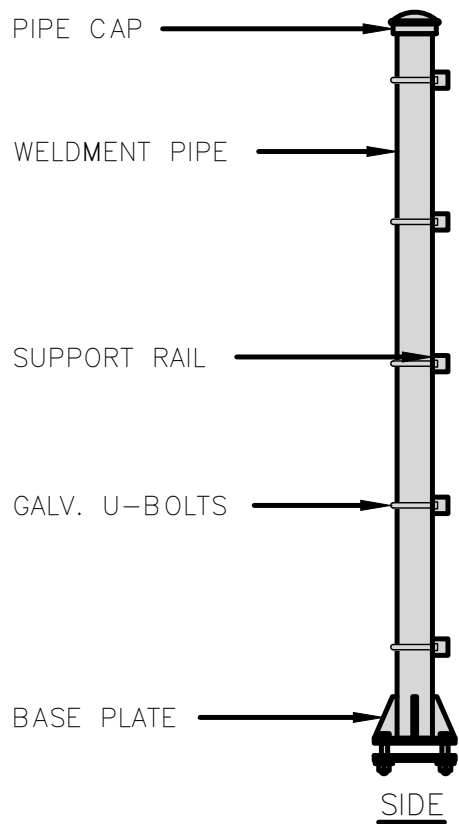


PLATFORM DETAIL

NO SCALE

2

COMMSCOPE MTC4045HFLD H-FRAME	
UNISTRUT/SUPPORT RAILS QTY	5
WEIGHT	59.74 lbs



NOTE:
OR DISH Wireless L.L.C.
APPROVED EQUIVALENT

H-FRAME DETAIL

NO SCALE

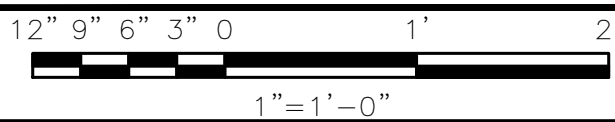
3

NOT USED

NO SCALE

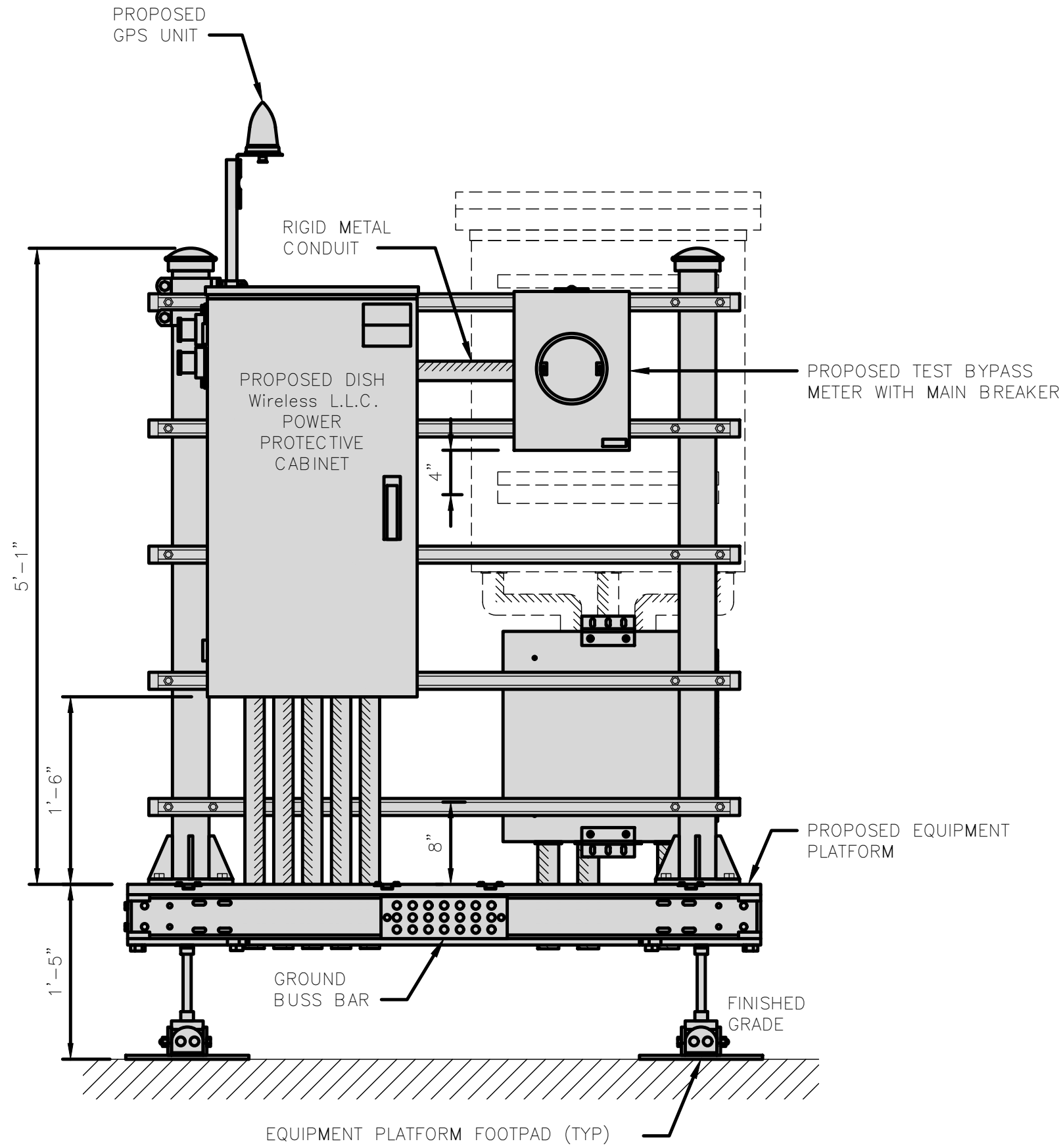
4

H-FRAME EQUIPMENT ELEVATION

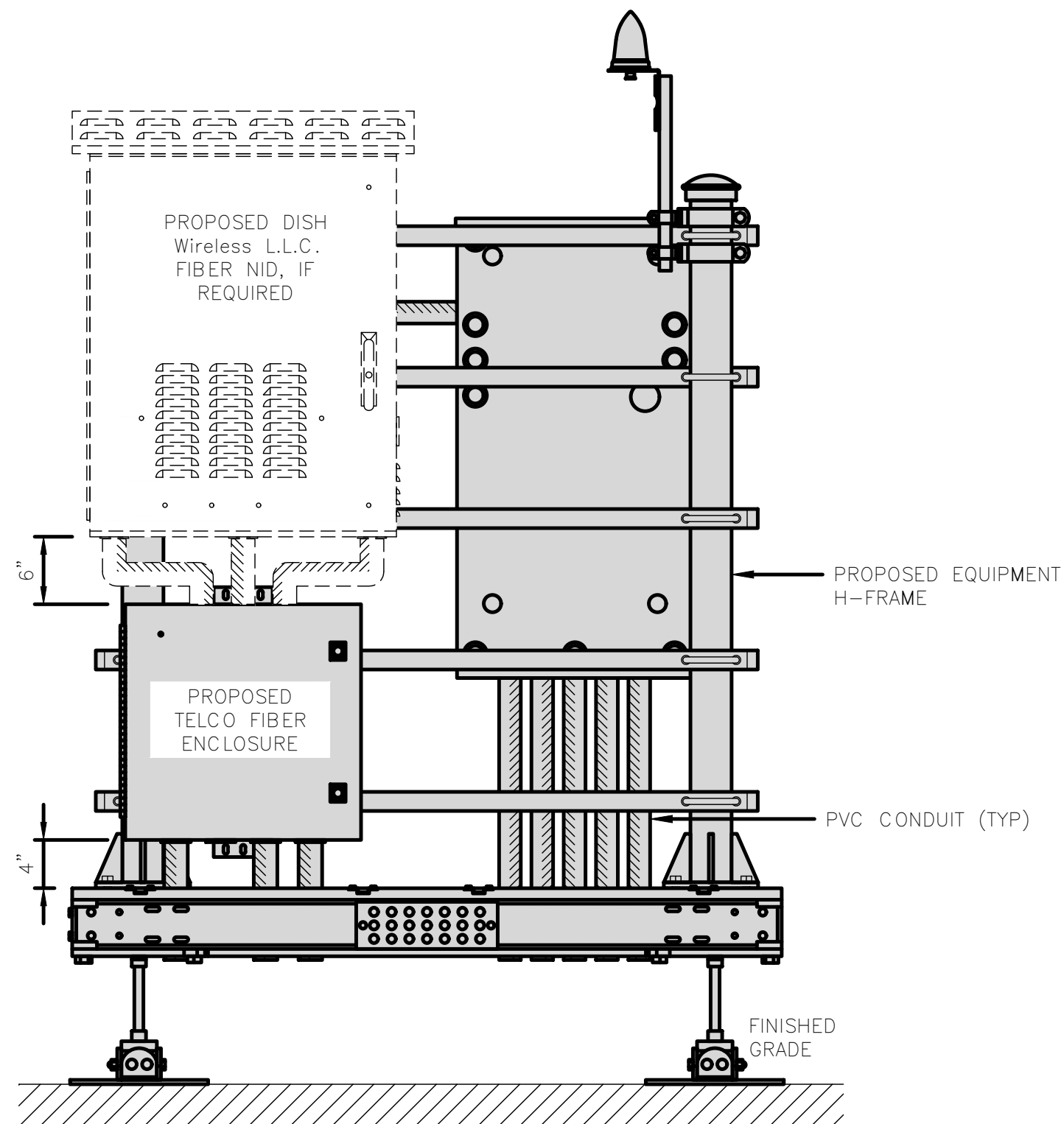


5

NOTE
1. EQUIPMENT CABINET OMITTED FOR CLARITY



FRONT ELEVATION



BACK ELEVATION

dish
wireless.

5701 SOUTH SANTA FE DRIVE
LITTLETON, CO 80120

THE
CBR
GROUP

2840 HOWE ROAD, SUITE E
MARTINEZ, CA 94553
www.TheCBRGroup.com

IT IS A VIOLATION OF LAW FOR ANY PERSON,
UNLESS THEY ARE ACTING UNDER THE DIRECTION
OF A LICENSED PROFESSIONAL ENGINEER,
TO ALTER THIS DOCUMENT.

DRAWN BY: CHECKED BY: APPROVED BY:

JDL/IK --- ---

RFDS REV #: 11/17/2021 REV 3

ZONING
DOCUMENTS

SUBMITTALS		
REV	DATE	DESCRIPTION
A	11/22/2021	90%ZD'S ISSUED FOR REVIEW
B	11/29/2021	100% ZONING DRAWINGS

A&E PROJECT NUMBER
SFSF000280A

DISH Wireless L.L.C.
PROJECT INFORMATION

SFSF000280A
50 OLD COURTHOUSE SQ.
SANTA ROSA, CA 95404

SHEET TITLE
EQUIPMENT PLATFORM AND
H-FRAME DETAILS

SHEET NUMBER

A-6