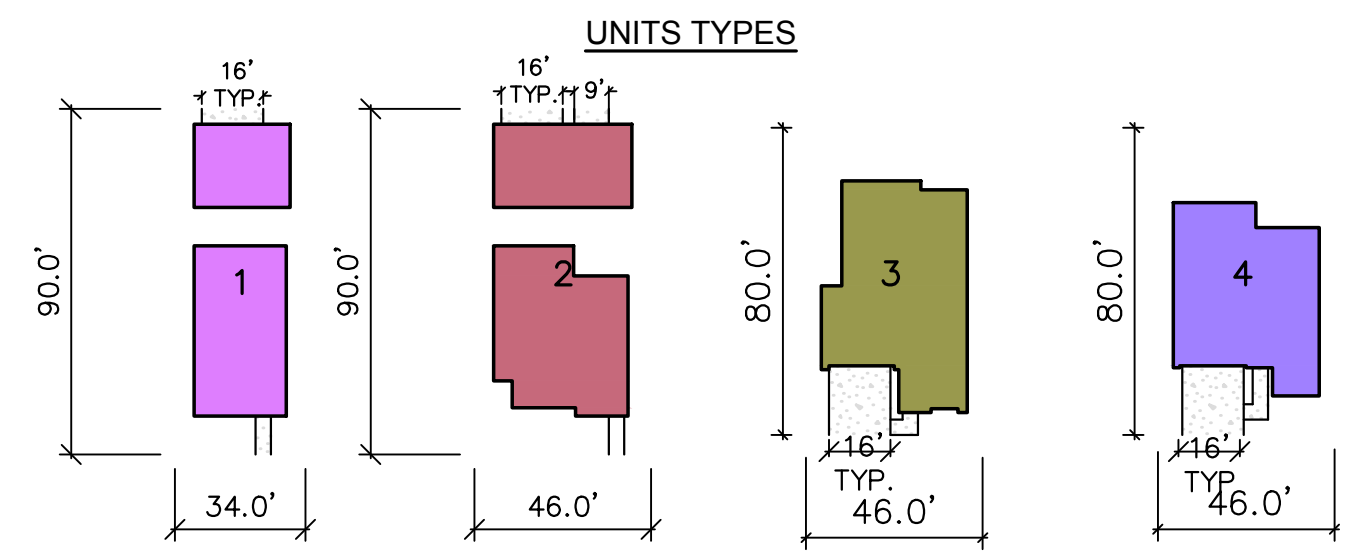


Below Market Rate Unit - BMR

Deed Restriction on Accessory Dwelling Units to Affordable Rental Rates



BMR Counts

8 qty 12 qty 0 qty 0 qty

TOTAL BMRS - 20 qty = 15%

PARKING CALCULATIONS AFTER RECONFIGURATION

UNIT COUNT
 UNIT 1: 35
 UNIT 2: 46
 UNIT 3: 25
 UNIT 4: 24
TOTAL: 130

DRIVEWAY PARKING
 UNIT 1: N/A
 UNIT 2: N/A
 UNIT 3: 50
 UNIT 4: 48

TOTAL DRIVEWAY PARKING: 98

GARAGE PARKING
 2 CAR GAR:
 (UNITS 1,3&4) 35+25+24=84
 84(2)=168

3 CAR GAR:
 (UNIT 2)=46
 (46)3=138

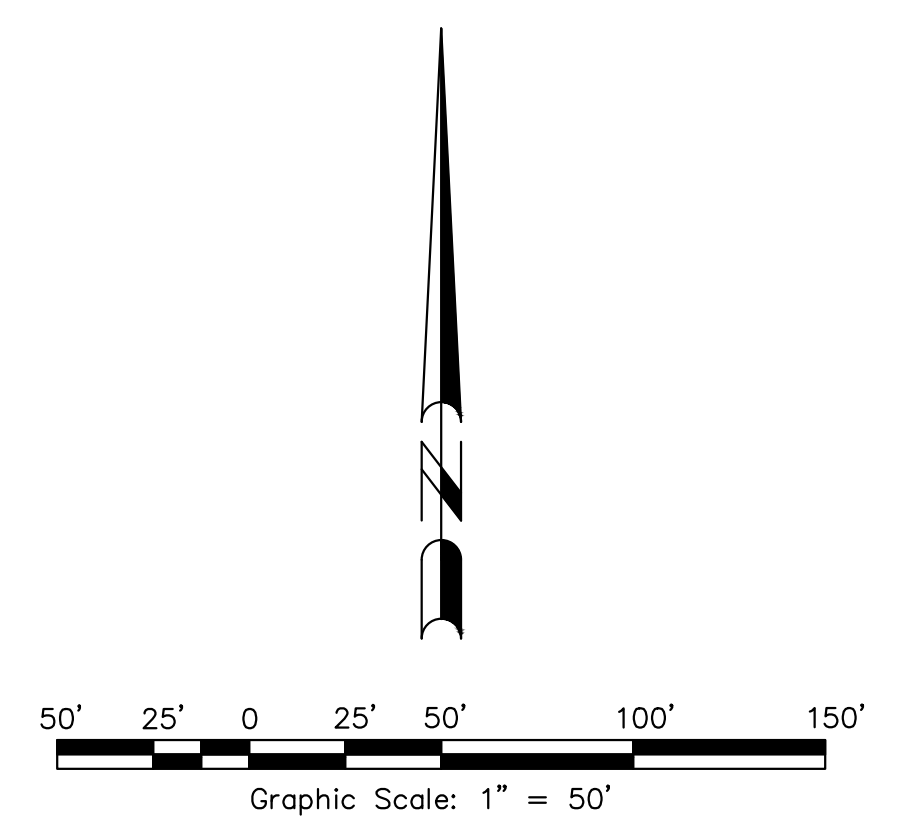
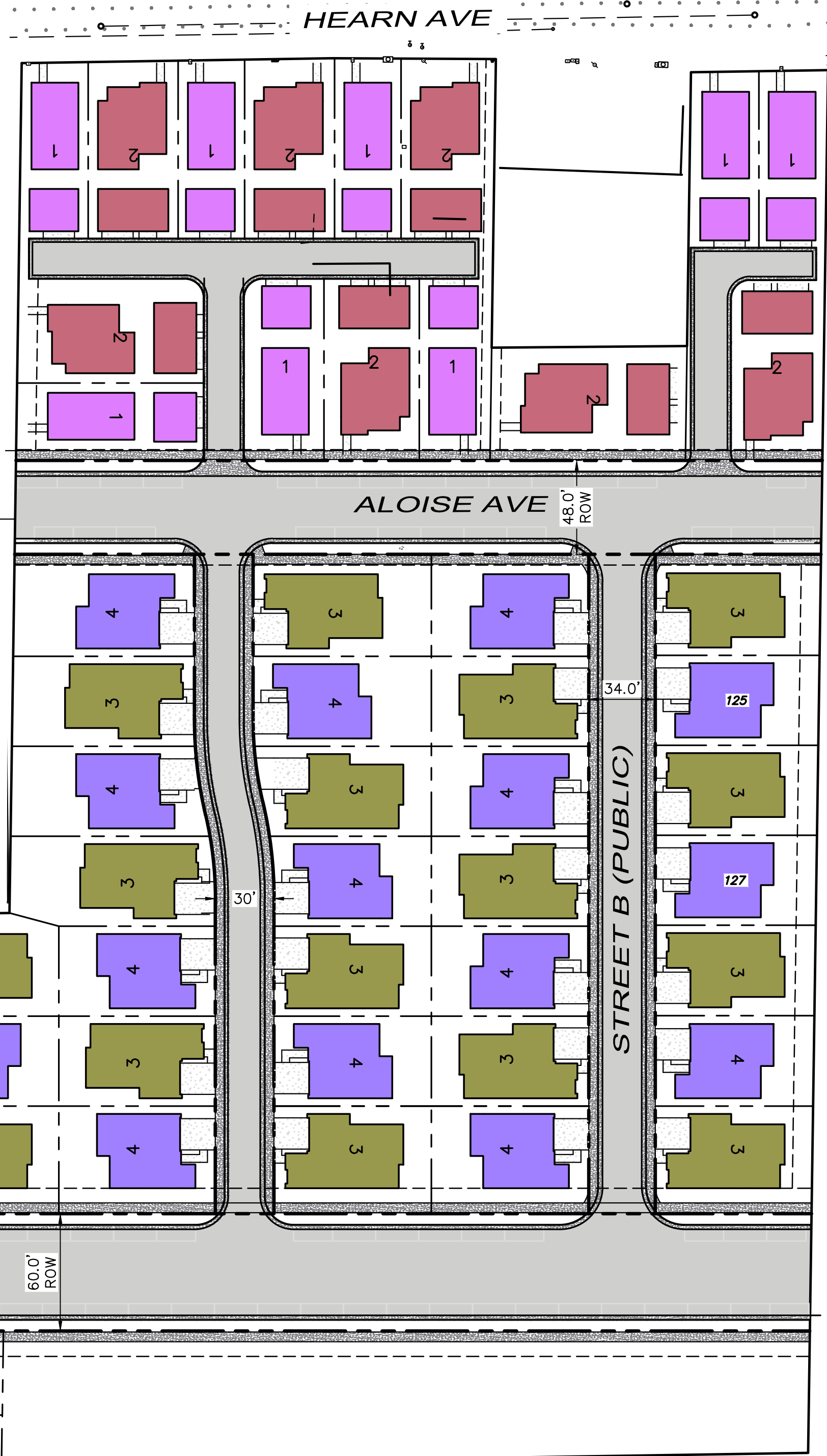
TOTAL GARAGE PARKING: 306

EXTERIOR PARKING
 STRIPED (PRIVATE): 46
 STREET (PUBLIC): 107
TOTAL EXTERIOR: 153

TOTAL PARKING AVAILABLE
 EXTERIOR PARKING: 153
 GARAGE PARKING: 306
 DRIVEWAY PARKING: 98

CALCULATED REQUIRED PARKING:
 TOTAL UNITS (130) X 4 = 520

PROVIDED PARKING: 557



T:\2018 Projects\80666\dwg\adobe--design\ventative Map_Vref\80666-X-C-Units.dwg, Tim Gleason, 11/16/2018 1:20:26 PM