

# Summary Vacation of Easement

## 3901 Heathfield Place

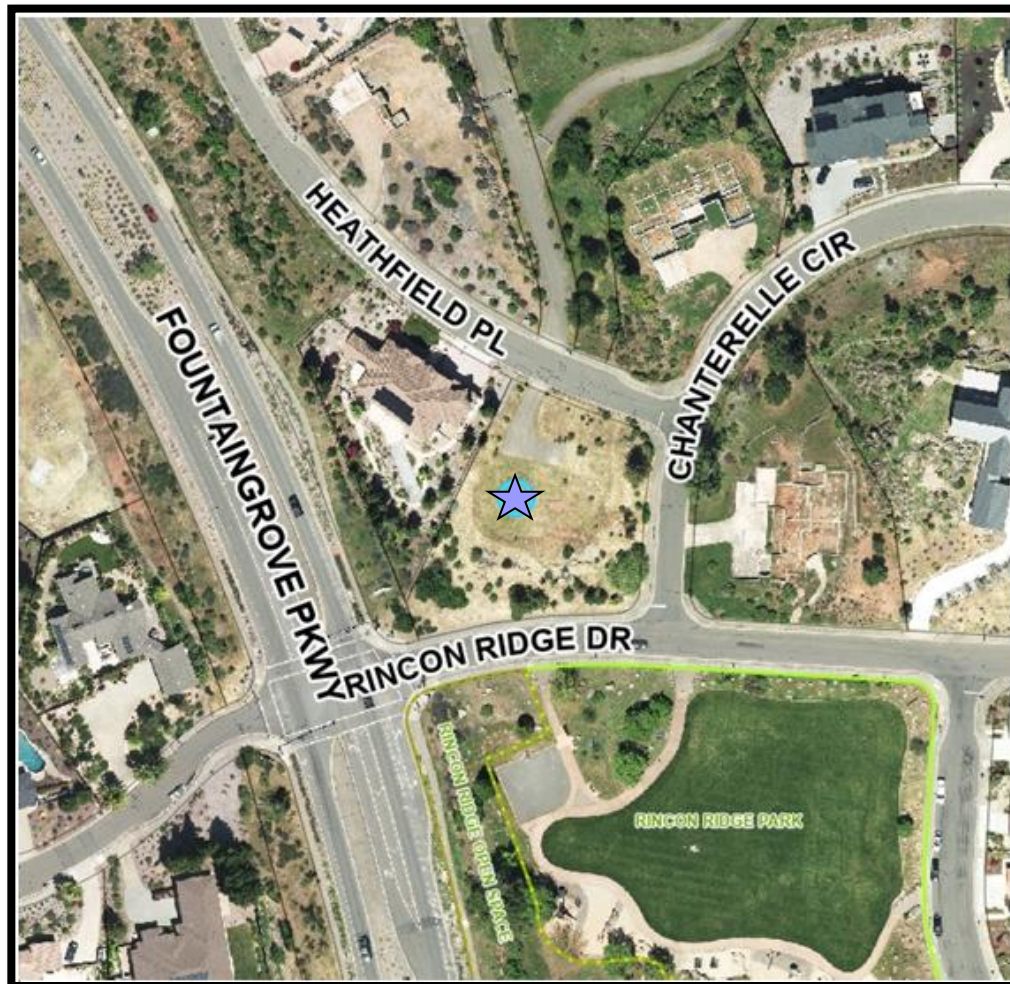
---

August 19, 2025

Jandon Briscoe, City Planner  
Planning and Economic Development

- The applicant seeks a summary vacation of an Emergency Vehicle Access easement, recorded in 1997.
- The easement has not been used for Emergency Vehicle access in over 20 years.
- The Emergency Vehicle Access easement was never shown on the subdivision map.

# Project Location





- Pursuant to Section 8333(a) of the Streets and Highways Code, the City may summarily vacate public service easements if the easement has not been used for the purpose for which it was dedicated or acquired for five consecutive years immediately preceding the proposed vacation. This Emergency Vehicle Access easement meets this requirement as it has never been used for public utilities or public drainage.

# Environmental Review

## California Environmental Quality Act (CEQA)

- This action is categorically exempt from the California Environmental Quality Act (CEQA) pursuant to CEQA Guidelines Section 15305, minor alterations in land use limitations.

## Recommendation

It is recommended by the Planning and Economic Development Department that the Council, by resolution, approve a summary vacation of an Emergency Vehicle Access easement for the property located at 3901 Heathfield Place.

Jandon Briscoe, City Planner  
Planning and Economic Development  
[jbriscoe@srcity.org](mailto:jbriscoe@srcity.org)  
(707) 543-3236