



City of Santa Rosa Draft Maps



January 25, 2022

California Fair Maps Act

Open and Fair redistricting process

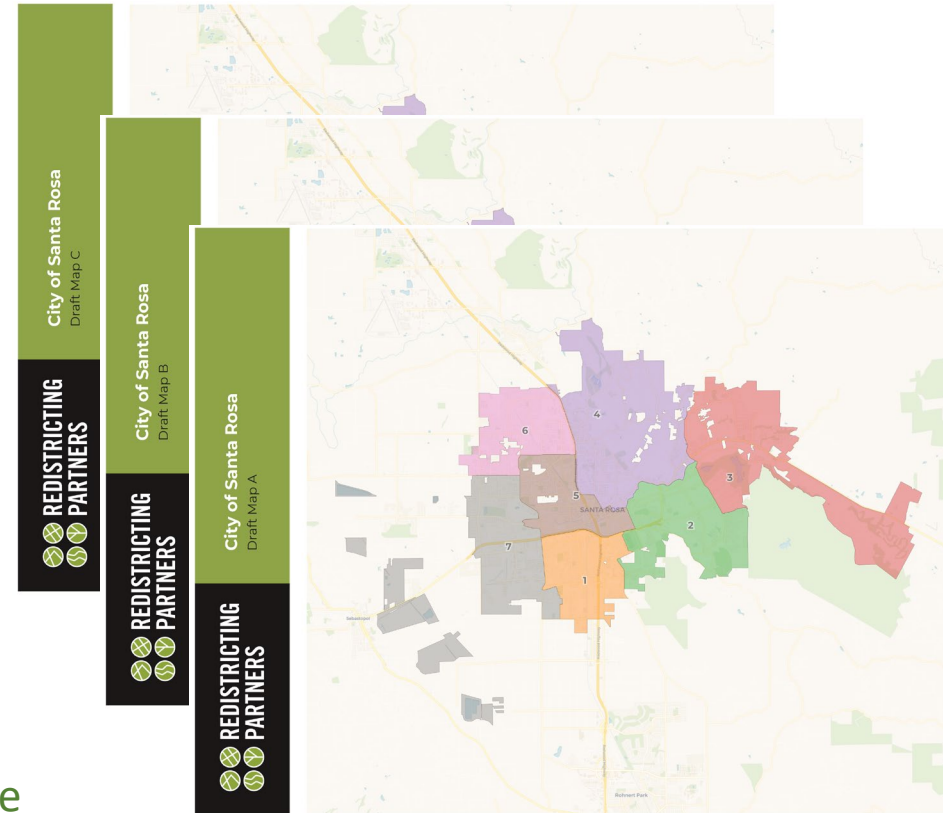
The Fair Maps Act passed by the Legislature mandates a set of criteria we must follow when drawing district plans.

- Relatively equal size - people, not citizens
- Contiguous – districts should not hop/jump
- Maintain “*communities of interest*”
- Follow city and census designated place boundaries
- Keep districts compact – appearance/function

From COI to Maps

With more cities and counties using community-based redistricting, we move redistricting out into the public, with maps driven by Community of Interest testimony.

- **Input from community drives process** with multiple ways for the public to engage.
- **Rules for process** emphasize the importance of traditional criteria and minimizing divisions of neighborhoods.
- **Releasing maps for feedback** – today we will see plans to spark more public engagement.

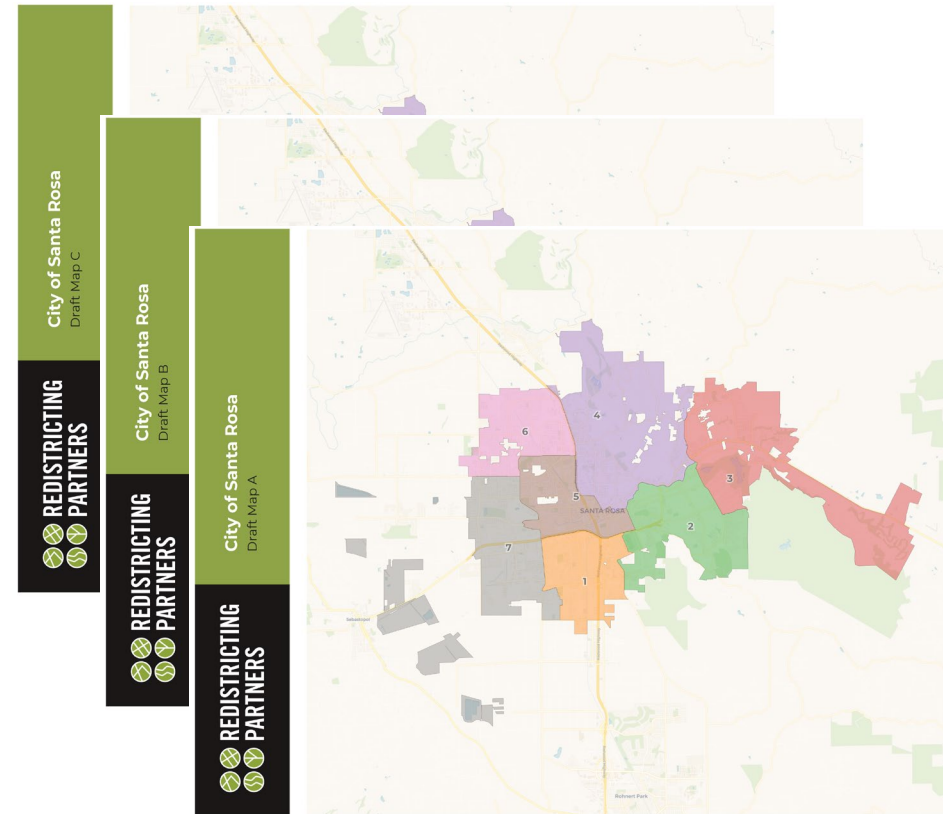


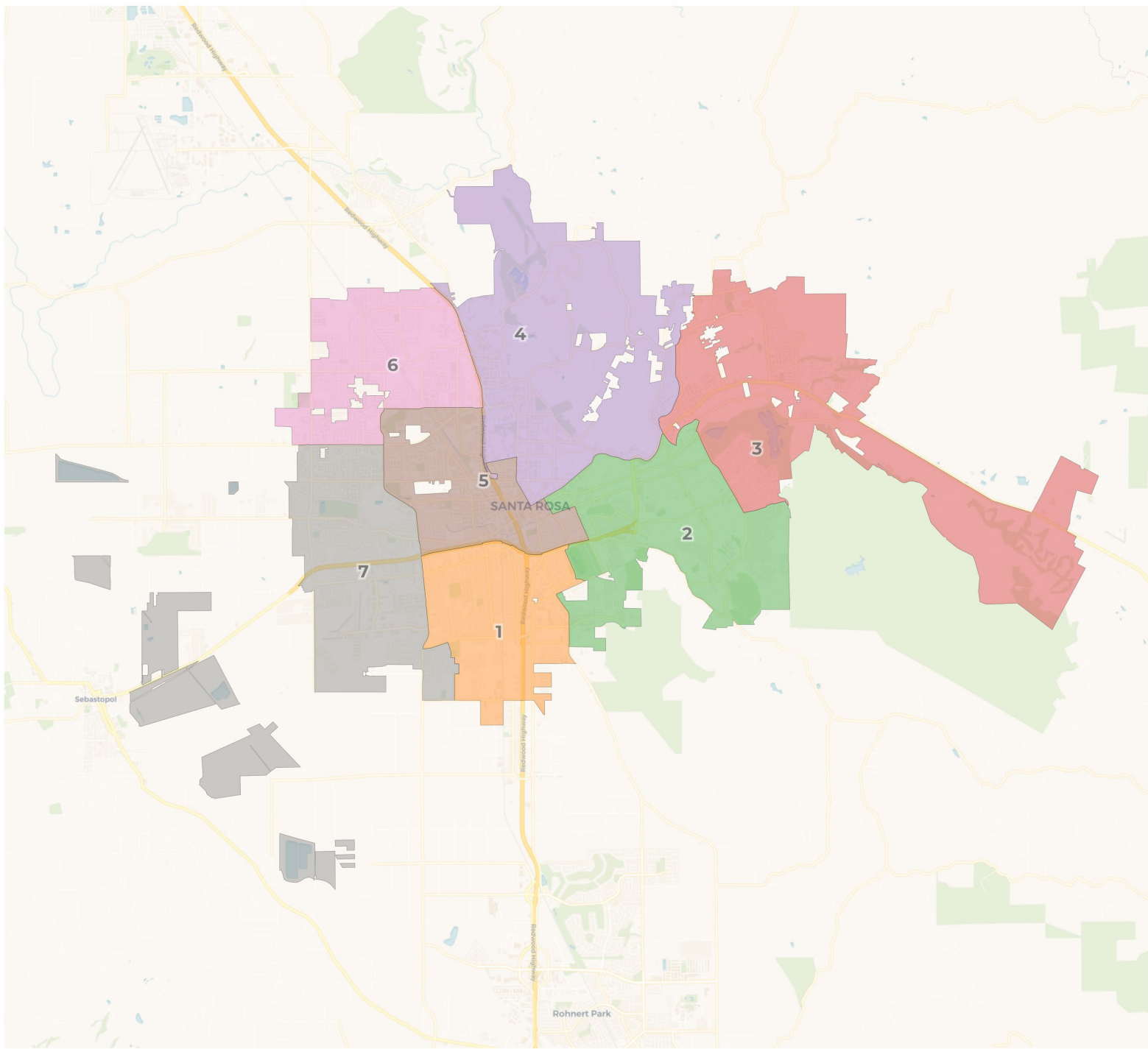
Maps to Review

There are three plans to review and approve for release as draft maps for the public:

- Plan A
- Plan B
- Plan C

Each plan has an overview, data table, individual district pages and web map that has been provided to the district and is available on the city redistricting website.





2020 Census

	1	2	3	4	5	6	7
Population	25,289	27,444	26,730	22,197	24,938	25,500	26,262
Deviation	-191	1,964	1,250	-3,283	-542	20	782
Deviation %	-0.7%	7.7%	4.9%	-12.9%	-2.1%	0.1%	3.1%
Other	7,309	19,369	20,671	17,024	11,212	13,526	13,528
Other %	28.9%	70.6%	77.3%	76.7%	45.0%	53.0%	51.5%
Latino	16,134	5,980	4,194	3,786	11,640	9,630	9,856
Latino %	63.8%	21.8%	15.7%	17.1%	46.7%	37.8%	37.5%
Asian	1,316	1,558	1,526	1,001	1,368	1,783	2,101
Asian %	5.2%	5.7%	5.7%	4.5%	5.5%	7.0%	8.0%
Black	530	537	339	386	718	561	777
Black %	2.1%	2.0%	1.3%	1.7%	2.9%	2.2%	3.0%

Citizen Voting Age Population (CVAP)

	1	2	3	4	5	6	7
Total CVAP	12,727	20,503	20,162	18,053	15,650	17,081	17,605
Other CVAP	6,377	16,748	17,189	15,215	10,822	11,856	11,589
Other CVAP %	50.1%	81.7%	85.3%	84.3%	69.2%	69.4%	65.8%
Latino CVAP	4,994	2,213	1,870	1,754	3,770	4,055	4,310
Latino CVAP %	39.2%	10.8%	9.3%	9.7%	24.1%	23.7%	24.5%
Asian CVAP	767	1,144	916	670	786	700	1,271
Asian CVAP %	6.0%	5.6%	4.5%	3.7%	5.0%	4.1%	7.2%
Black CVAP	589	398	187	414	272	470	435
Black CVAP %	4.6%	1.9%	0.9%	2.3%	1.7%	2.8%	2.5%

2020 Census

	1	2	3	4	5	6	7
Population	25,289	27,444	26,730	22,197	24,938	25,500	26,262
Deviation	-191	1,964	1,250	-3,283	-542	20	782
Deviation %	-0.7%	7.7%	4.9%	-12.9%	-2.1%	0.1%	3.1%
Other	7,309	19,369	20,671	17,024	11,212	13,526	13,528
Other %	28.9%	70.6%	77.3%	76.7%	45.0%	53.0%	51.5%
Latino	16,134	5,980	4,194	3,786	11,640	9,630	9,856
Latino %	63.8%					37.8%	37.5%
Asian	1,316					1,783	2,101
Asian %	5.2%					7.0%	8.0%
Black	530					561	777
Black %	2.1%	2.0%	1.3%	1.7%	2.9%	2.2%	3.0%

The total deviation of the plan is the sum of the absolute values of the highest and lowest districts. *Here the plan deviation is **20.6%***

Citizen Voting Age Population (CVAP)

	1	2	3	4	5	6	7
Total CVAP	12,727	20,503	20,162	18,053	15,650	17,081	17,605
Other CVAP	6,377	16,748	17,189	15,215	10,822	11,856	11,589
Other CVAP %	50.1%	81.7%	85.3%	84.3%	69.2%	69.4%	65.8%
Latino CVAP	4,994	2,213	1,870	1,754	3,770	4,055	4,310
Latino CVAP %	39.2%	10.8%	9.3%	9.7%	24.1%	23.7%	24.5%
Asian CVAP	767	1,144	916	670	786	700	1,271
Asian CVAP %	6.0%	5.6%	4.5%	3.7%	5.0%	4.1%	7.2%
Black CVAP	589	398	187	414	272	470	435
Black CVAP %	4.6%	1.9%	0.9%	2.3%	1.7%	2.8%	2.5%

2020 Census

	1	2	3	4	5	6	7
Population	25,289	27,444	26,730	22,197	24,938	25,500	26,262
Deviation	-191	1,964	1,250	-3,283	-542	20	782
Deviation %	-0.7%	7.7%	4.9%	-12.9%	-2.1%	0.1%	3.1%
Other	7,309	19,369	20,671	17,024	11,212	13,526	13,528
Other %	28.9%	70.6%	77.3%	76.7%	45.0%	53.0%	51.5%
Latino	16,134	5,980	4,194	3,786	11,640	9,630	9,856
Latino %	63.8%	21.8%	15.7%	17.1%	46.7%	37.8%	37.5%
Asian	1,316	1,558	1,526	1,001	1,368	1,783	2,101
Asian %	5.2%	5.7%	5.7%	4.5%	5.5%	7.0%	8.0%
Black	530	537	339	386	718	561	777
Black %	2.1%	2.0%	1.3%	1.7%	2.9%	2.2%	3.0%

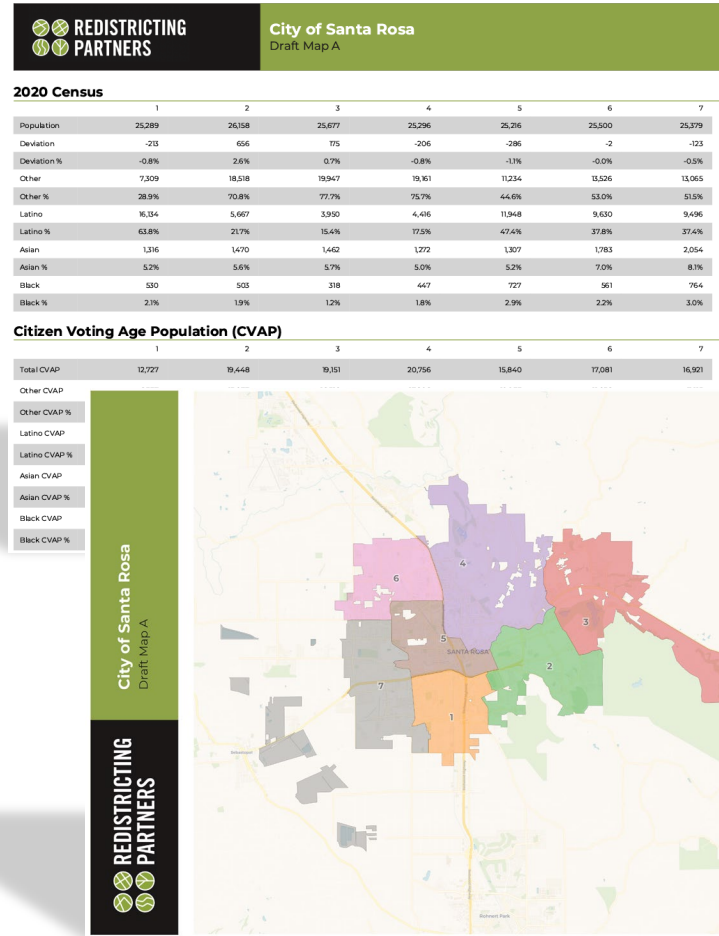
Citizen Voting Age Population (CVAP)

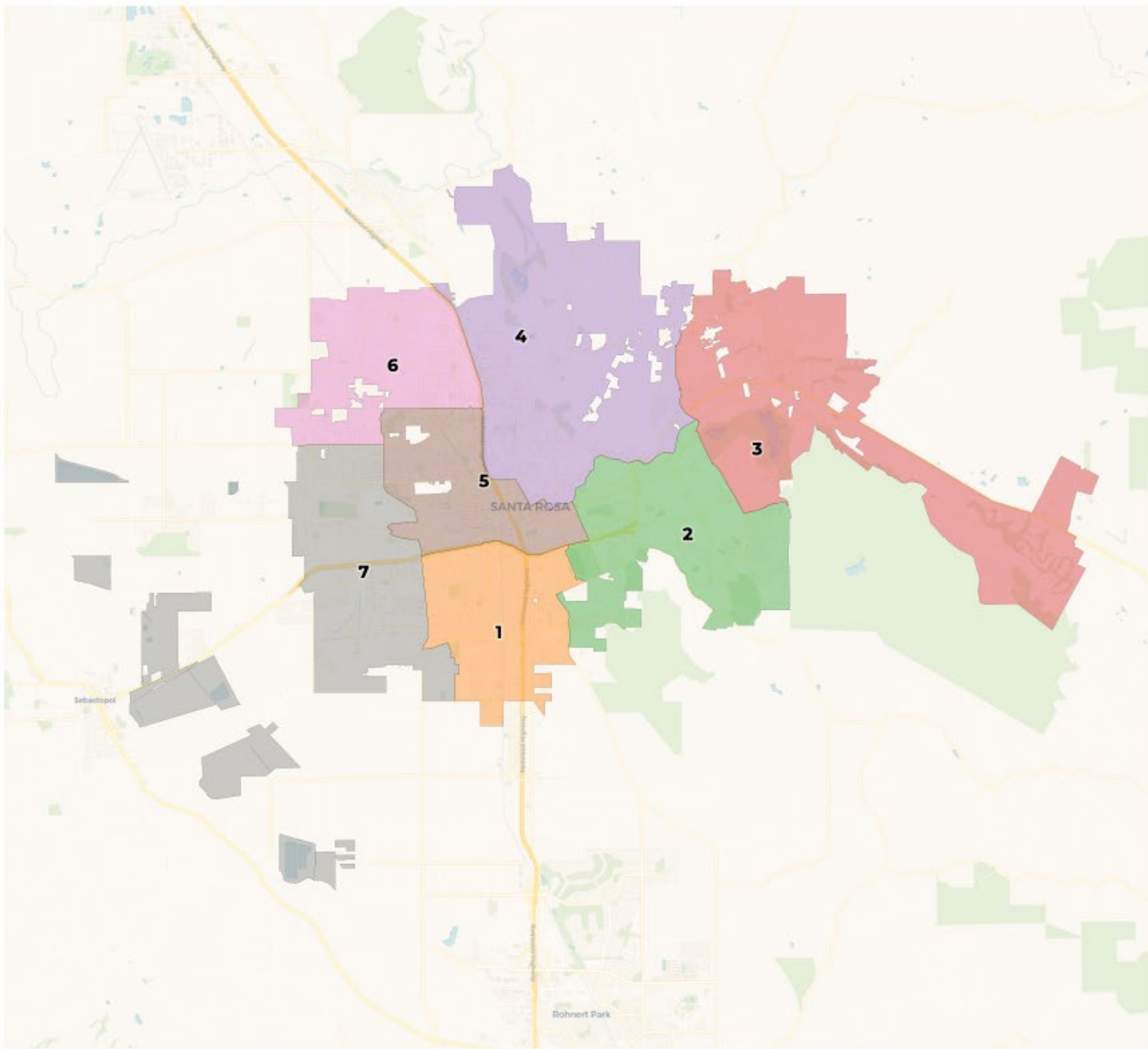
	1	2	3	4	5	6	7
Total CVAP	12,727	20,503	20,162	18,053	15,650	17,081	17,605
Other CVAP	6,377	16,748	17,189	15,215	10,822	11,856	11,589
Other CVAP %	50.1%	81.7%	85.3%	84.3%	69.2%	69.4%	65.8%
Latino CVAP	4,994	2,213	1,870	1,754	3,770	4,055	4,310
Latino CVAP %	39.2%	10.8%	9.3%	9.7%	24.1%	23.7%	24.5%
Asian CVAP	767	1,144	916	670	786	700	1,271
Asian CVAP %	6.0%	5.6%	4.5%	3.7%	5.0%	4.1%	7.2%
Black CVAP	589	398	187	414	272	470	435
Black CVAP %	4.6%	1.9%	0.9%	2.3%	1.7%	2.8%	2.5%

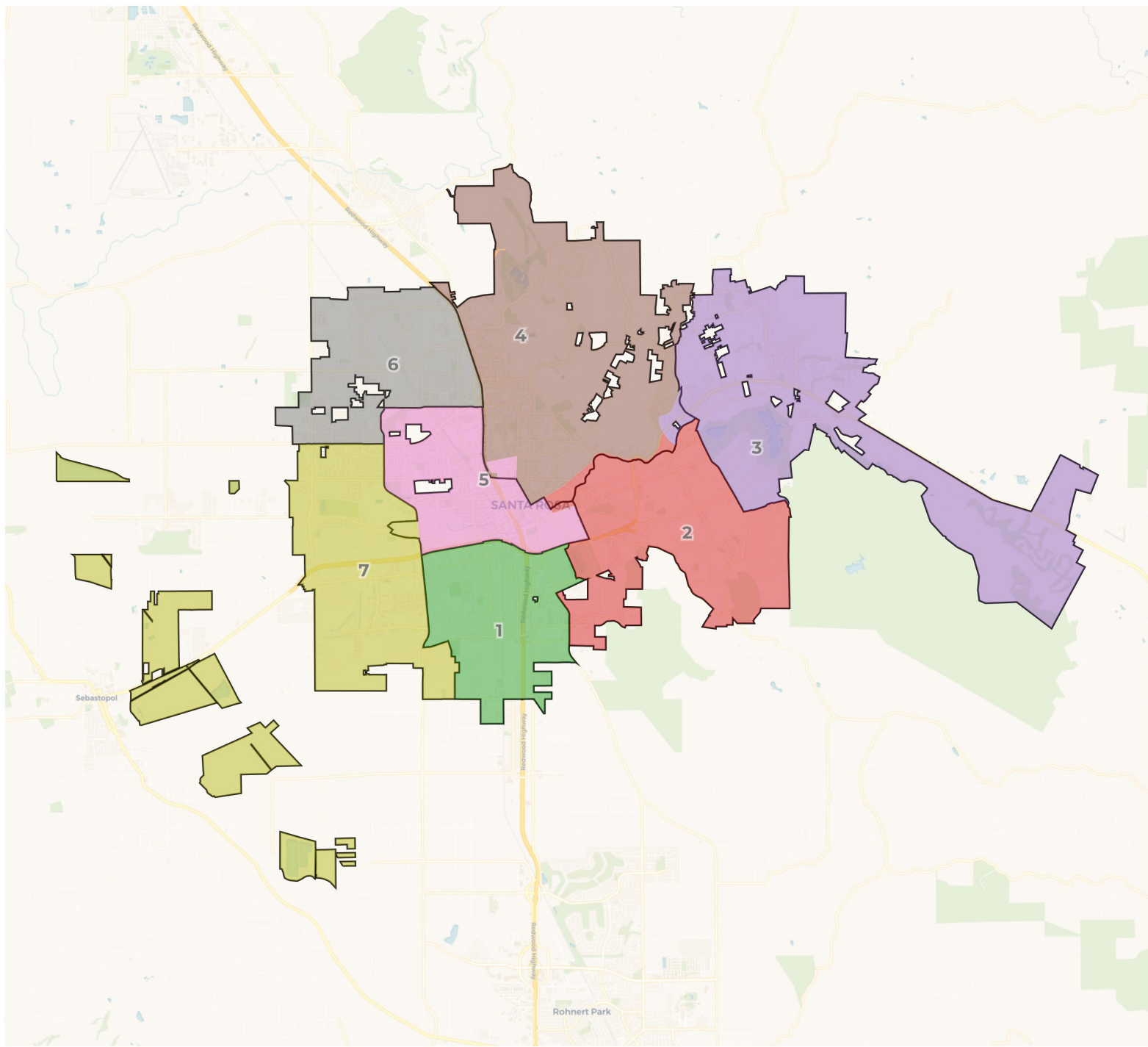
Maps to Review

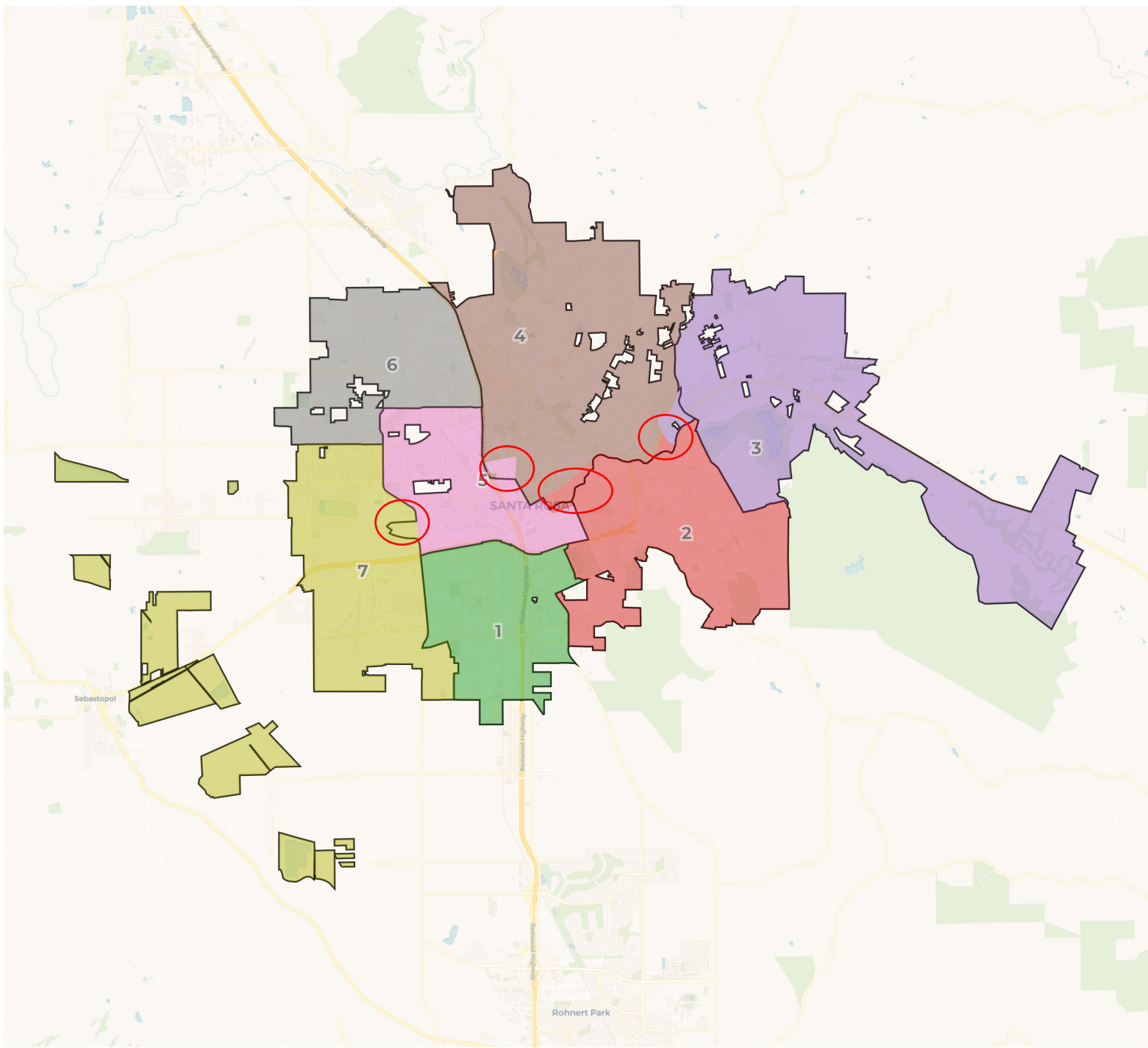
Draft Map A was created based on minimal changes from the current lines:

- Changed to decrease total deviation









2020 Census

	1	2	3	4	5	6	7
Population	25,289	26,158	25,677	25,296	25,216	25,500	25,379
Deviation	-213	656	775	-206	-286	-2	-123
Deviation %	-0.8%	2.6%	0.7%	-0.8%	-1.1%	-0.0%	-0.5%
Other	7,309	18,518	19,947	19,161	11,234	13,526	13,065
Other %	28.9%	70.8%	77.7%	75.7%	44.6%	53.0%	51.5%
Latino	16,134	5,667	3,950	4,416	11,948	9,630	9,496
Latino %	63.8%	21.7%	15.4%	17.5%	47.4%	37.8%	37.4%
Asian	1,316	1,470	1,462	1,272	1,307	1,783	2,054
Asian %	5.2%	5.6%	5.7%	5.0%	5.2%	7.0%	8.1%
Black	530	503	318	447	727	561	764
Black %	2.1%	1.9%	1.2%	1.8%	2.9%	2.2%	3.0%

Citizen Voting Age Population (CVAP)

	1	2	3	4	5	6	7
Total CVAP	12,727	19,448	19,151	20,756	15,840	17,081	16,921
Other CVAP	6,377	15,877	16,518	17,206	10,933	11,856	11,115
Other CVAP %	50.1%	81.6%	86.3%	82.9%	69.0%	69.4%	65.7%
Latino CVAP	4,994	2,075	1,622	2,235	3,873	4,055	4,123
Latino CVAP %	39.2%	10.7%	8.5%	10.8%	24.5%	23.7%	24.4%
Asian CVAP	767	1,125	824	870	752	700	1,248
Asian CVAP %	6.0%	5.8%	4.3%	4.2%	4.7%	4.1%	7.4%
Black CVAP	589	371	187	445	282	470	435
Black CVAP %	4.6%	1.9%	1.0%	2.1%	1.8%	2.8%	2.6%

2020 Census

	1	2	3	4	5	6	7
Population	25,289	26,158	25,677	25,296	25,216	25,500	25,379
Deviation	-213	656	775	-206	-286	-2	-123
Deviation %	-0.8%	2.6%	0.7%	-0.8%	-1.1%	-0.0%	-0.5%
Other	7,309	18,518	19,947	19,161	11,234	13,526	13,065
Other %	28.9%	70.8%	77.7%	75.7%	44.6%	53.0%	51.5%
Latino							9,496
Latino %							37.4%
Asian	1,316	1,470	1,462	1,272	1,307	1,783	2,054
Asian %	5.2%	5.6%	5.7%	5.0%	5.2%	7.0%	8.1%
Black	530	503	318	447	727	561	764
Black %	2.1%	1.9%	1.2%	1.8%	2.9%	2.2%	3.0%

Total Deviation of 3.7%

Citizen Voting Age Population (CVAP)

	1	2	3	4	5	6	7
Total CVAP	12,727	19,448	19,151	20,756	15,840	17,081	16,921
Other CVAP	6,377	15,877	16,518	17,206	10,933	11,856	11,115
Other CVAP %	50.1%	81.6%	86.3%	82.9%	69.0%	69.4%	65.7%
Latino CVAP	4,994	2,075	1,622	2,235	3,873	4,055	4,123
Latino CVAP %	39.2%	10.7%	8.5%	10.8%	24.5%	23.7%	24.4%
Asian CVAP	767	1,125	824	870	752	700	1,248
Asian CVAP %	6.0%	5.8%	4.3%	4.2%	4.7%	4.1%	7.4%
Black CVAP	589	371	187	445	282	470	435
Black CVAP %	4.6%	1.9%	1.0%	2.1%	1.8%	2.8%	2.6%

Maps to Review

Draft Map B uses major highways, streets and neighborhoods to divide boundaries.

Notable neighborhoods:

D1: Bennet Valley, South Park

D2: Junior College, Greater Cherry Street, Burbank Gardens

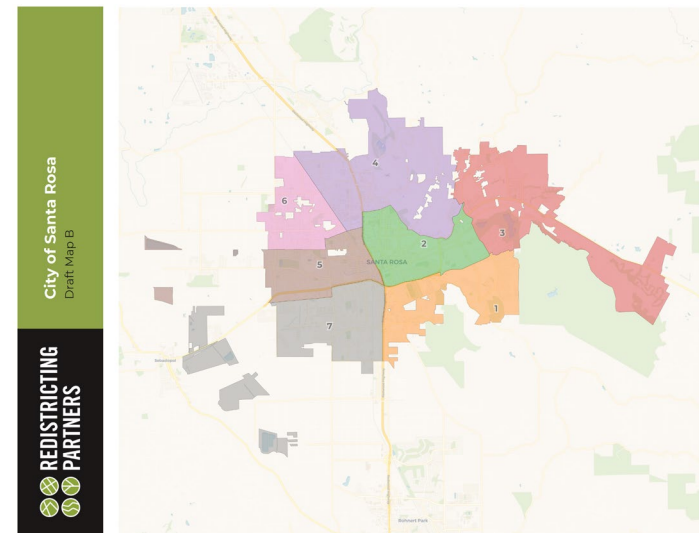
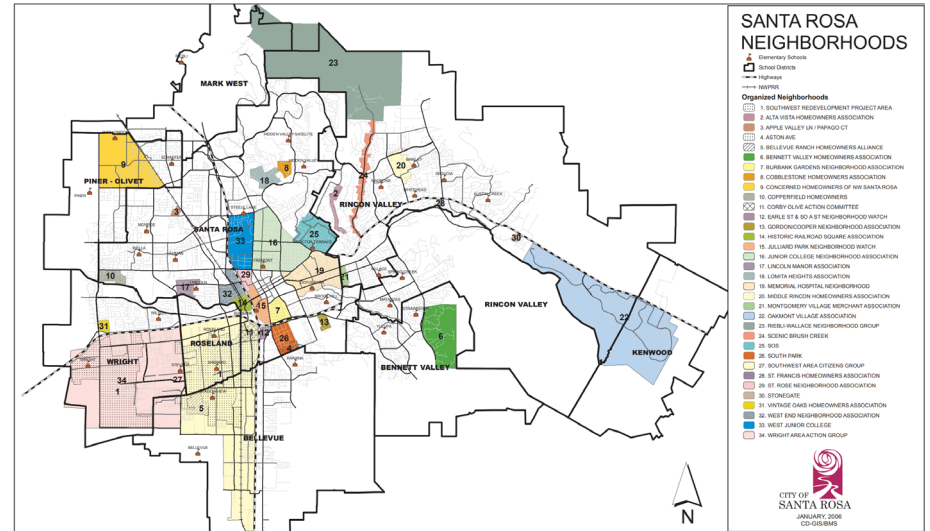
D3: Kenwood

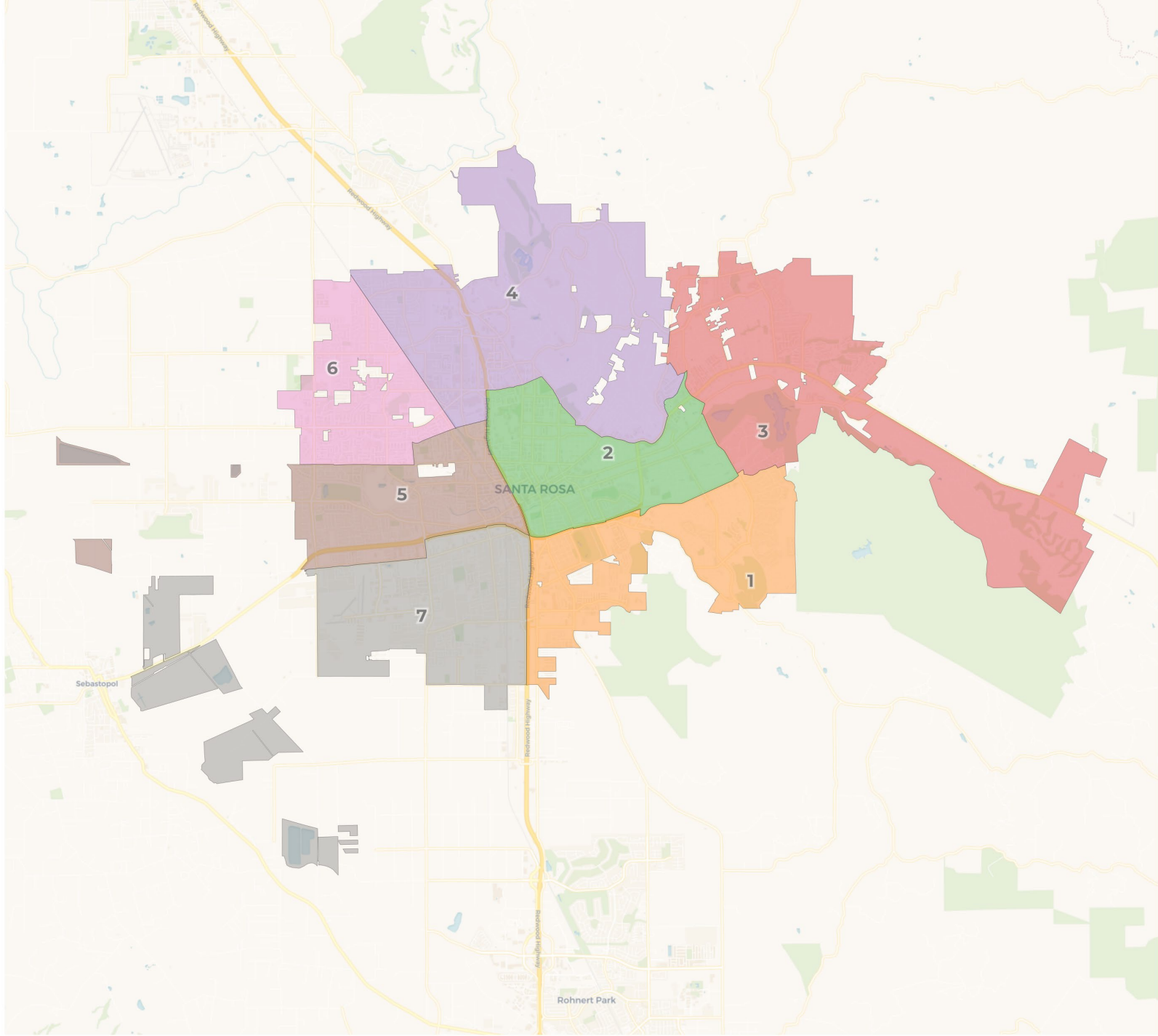
D4: Riebli-Wallace, Cobblestone, Lomita Heights

D5: Lincoln Manor, Copperfield, West End

D6: Apple Valley

D7: Roseland

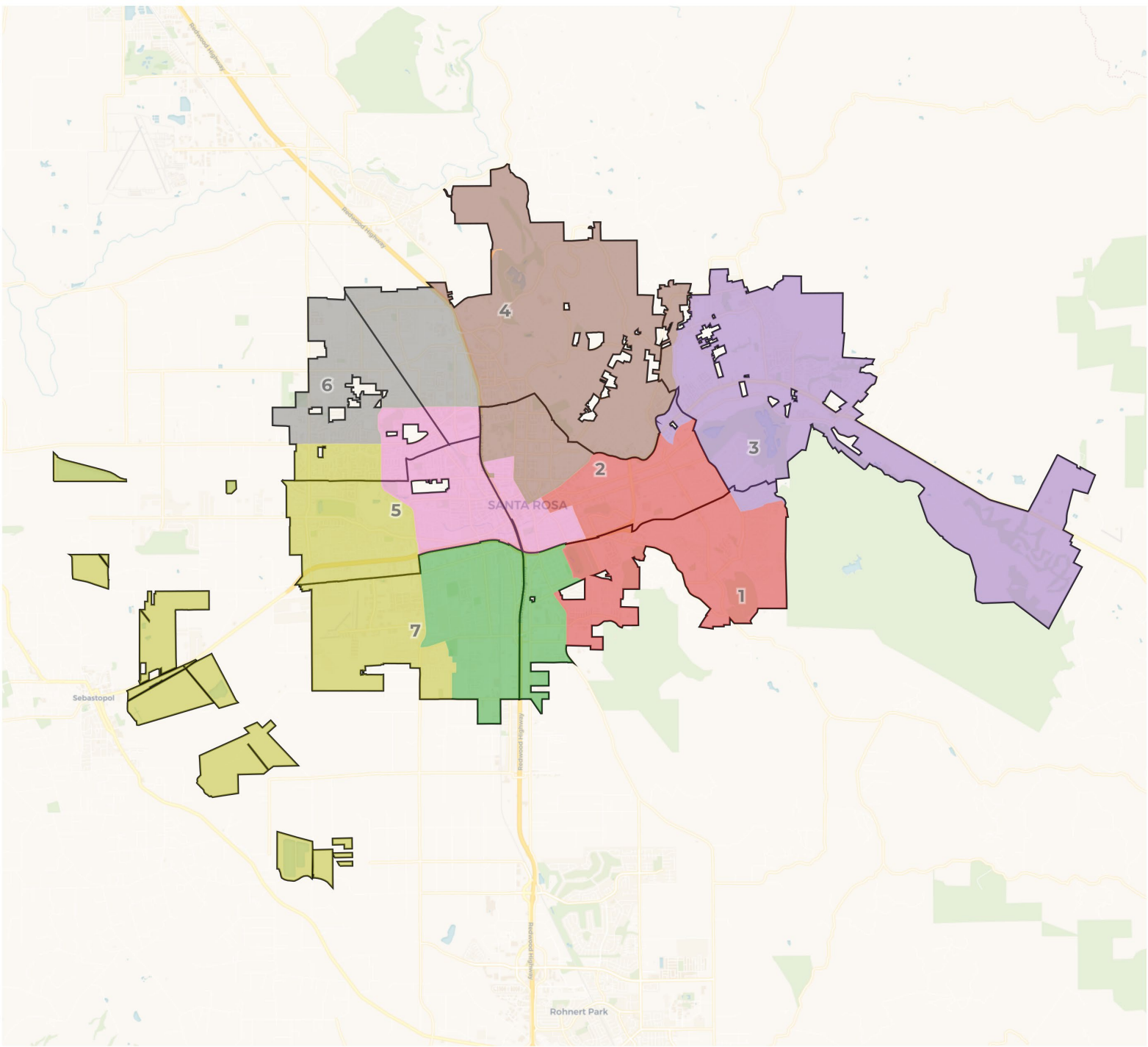




**REDISTRICTING
PARTNERS**

City of Santa Rosa

Draft Map B with existing lines



2020 Census

	1	2	3	4	5	6	7
Population	24,910	25,416	26,208	25,771	24,978	24,917	26,315
Deviation	-592	-86	706	269	-524	-585	813
Deviation %	-2.3%	-0.3%	2.8%	1.1%	-2.1%	-2.3%	3.2%
Other	14,384	17,878	20,279	16,564	12,314	13,040	8,301
Other %	57.7%	70.3%	77.4%	64.3%	49.3%	52.3%	31.5%
Latino	8,258	6,032	4,080	7,240	10,864	9,297	15,470
Latino %	33.2%	23.7%	15.6%	28.1%	43.5%	37.3%	58.8%
Asian	1,688	1,016	1,511	1,460	1,220	1,891	1,878
Asian %	6.8%	4.0%	5.8%	5.7%	4.9%	7.6%	7.1%
Black	580	490	338	507	580	689	666
Black %	2.3%	1.9%	1.3%	2.0%	2.3%	2.8%	2.5%

Citizen Voting Age Population (CVAP)

	1	2	3	4	5	6	7
Total CVAP	16,454	19,543	19,613	19,514	15,095	16,761	14,944
Other CVAP	12,201	15,999	16,897	14,771	10,514	12,118	7,382
Other CVAP %	74.2%	81.9%	86.2%	75.7%	69.7%	72.3%	49.4%
Latino CVAP	2,515	2,488	1,723	3,324	3,497	3,579	5,851
Latino CVAP %	15.3%	12.7%	8.8%	17.0%	23.2%	21.4%	39.2%
Asian CVAP	1,305	554	826	943	918	671	1,069
Asian CVAP %	7.9%	2.8%	4.2%	4.8%	6.1%	4.0%	7.2%
Black CVAP	433	502	167	476	166	393	642
Black CVAP %	2.6%	2.6%	0.9%	2.4%	1.1%	2.3%	4.3%

2020 Census

	1	2	3	4	5	6	7
Population	24,910	25,416	26,208	25,771	24,978	24,917	26,315
Deviation	-592	-86	706	269	-524	-585	813
Deviation %	-2.3%	-0.3%	2.8%	1.1%	-2.1%	-2.3%	3.2%
Other	14,384	17,878	20,279	16,564	12,314	13,040	8,301
Other %	57.7%	70.3%	77.4%	64.3%	49.3%	52.3%	31.5%
Latino							15,470
Latino %							58.8%
Asian							1,878
Asian %	6.8%	4.0%	5.8%	5.7%	4.9%	7.6%	7.1%
Black	580	490	338	507	580	689	666
Black %	2.3%	1.9%	1.3%	2.0%	2.3%	2.8%	2.5%

Total Deviation of 5.5%

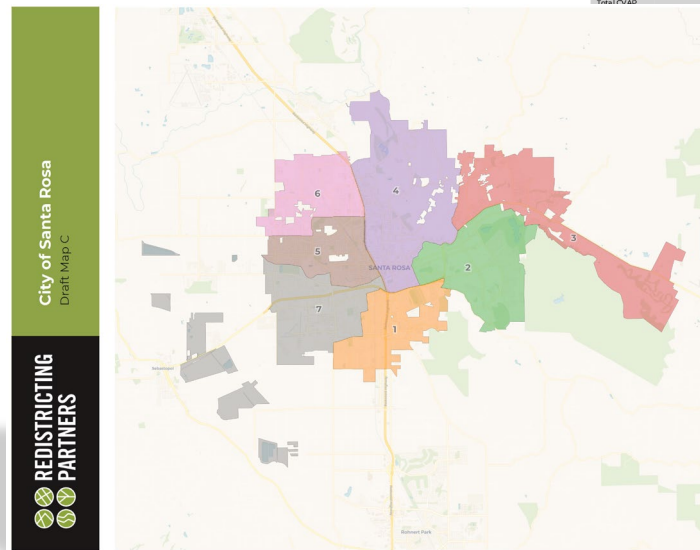
Citizen Voting Age Population (CVAP)

	1	2	3	4	5	6	7
Total CVAP	16,454	19,543	19,613	19,514	15,095	16,761	14,944
Other CVAP	12,201	15,999	16,897	14,771	10,514	12,118	7,382
Other CVAP %	74.2%	81.9%	86.2%	75.7%	69.7%	72.3%	49.4%
Latino CVAP	2,515	2,488	1,723	3,324	3,497	3,579	5,851
Latino CVAP %	15.3%	12.7%	8.8%	17.0%	23.2%	21.4%	39.2%
Asian CVAP	1,305	554	826	943	918	671	1,069
Asian CVAP %	7.9%	2.8%	4.2%	4.8%	6.1%	4.0%	7.2%
Black CVAP	433	502	167	476	166	393	642
Black CVAP %	2.6%	2.6%	0.9%	2.4%	1.1%	2.3%	4.3%

Maps to Review

Draft Map C was based on a DistrictR submission (ID: 101628)

- Far less change than Map B but more change than Map A

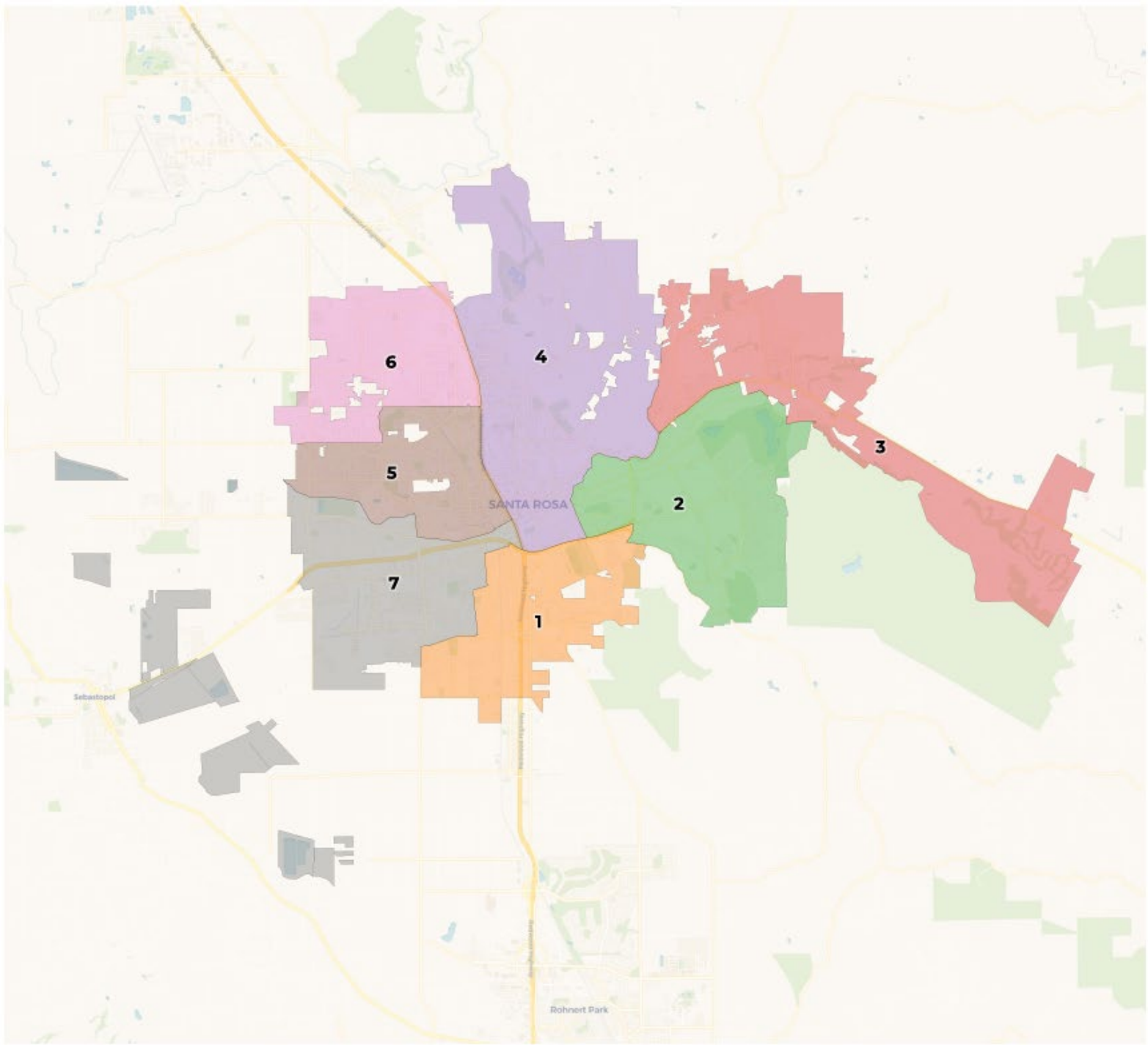


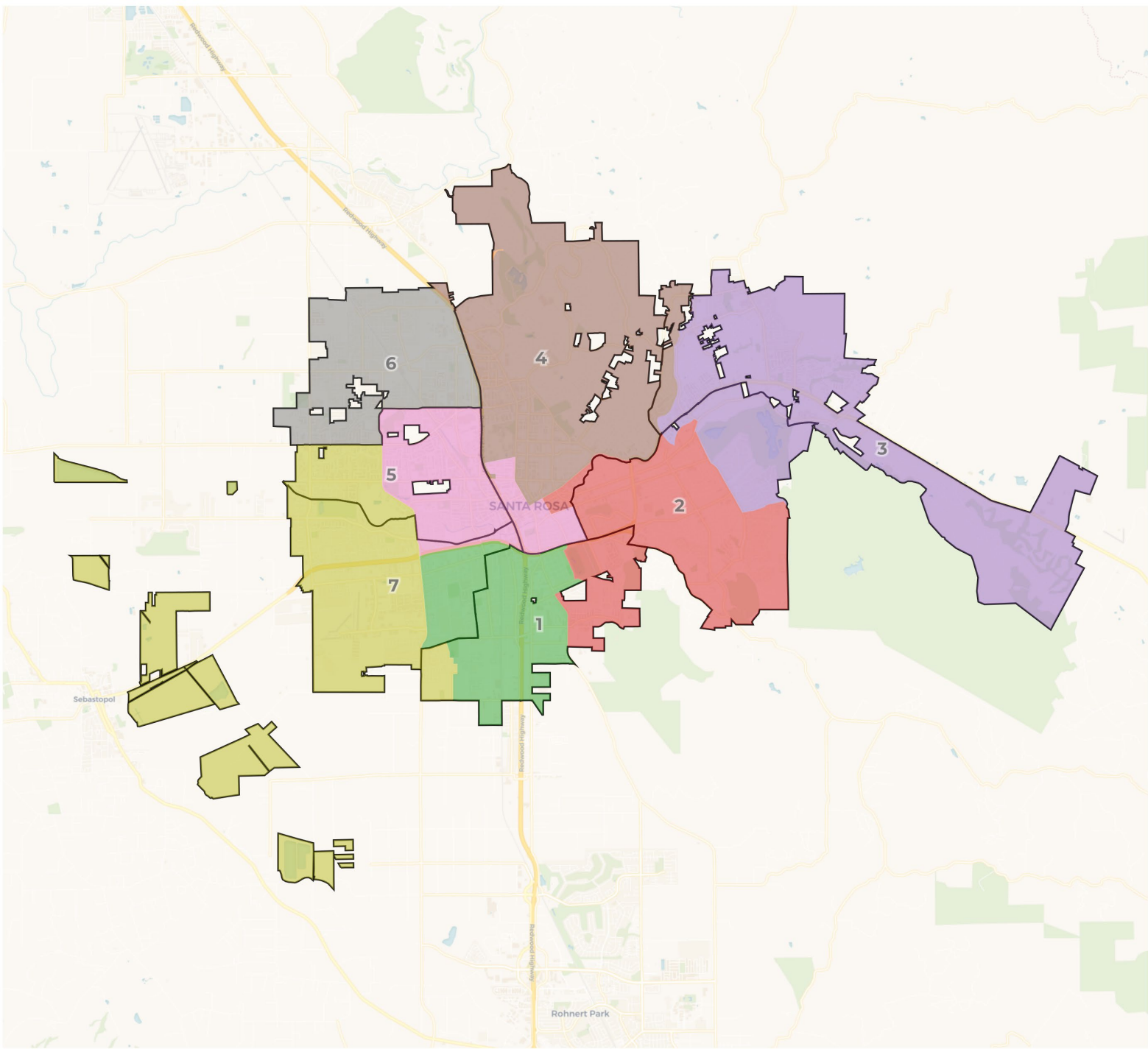
2020 Census

	1	2	3	4	5	6	7
Population	25,533	25,392	25,012	25,975	25,726	25,500	25,377
Deviation	31	-110	-490	473	224	-2	-125
Deviation %	0.1%	-0.4%	-1.9%	1.9%	0.9%	-0.0%	-0.5%
Other %	8,301	19,450	19,313	19,188	11,695	13,526	11,287
Other %	32.5%	76.6%	77.2%	73.9%	45.5%	53.0%	44.5%
Latino	14,463	4,558	3,913	5,079	11,928	9,630	11,670
Latino %	56.6%	18.0%	15.6%	19.6%	46.4%	37.8%	46.0%
Asian	2,116	988	1,456	1,219	1,392	1,783	1,710
Asian %	8.3%	3.9%	5.8%	4.7%	5.4%	7.0%	6.7%
Black	653	396	330	489	711	561	750
Black %	2.6%	1.6%	1.3%	1.9%	2.8%	2.2%	2.8%

Citizen Voting Age Population (CVAP)

	1	2	3	4	5	6	7
Total CVAP	14,580	19,324	18,958	21,018	15,889	17,081	15,074
62%	16,456	16,378	17,356	11,008	11,866	9,203	
2.3%	85.2%	86.4%	82.6%	69.3%	69.4%	61.1%	
947	1,759	1,677	2,319	3,867	4,055	4,353	
5.9%	9.3%	8.8%	11.0%	24.3%	23.7%	28.9%	
1,316	746	789	830	771	700	1,135	
1.0%	3.9%	4.2%	3.9%	4.9%	4.1%	7.5%	
692	364	114	513	243	470	383	
4.7%	1.9%	0.6%	2.4%	1.5%	2.8%	2.5%	





2020 Census

	1	2	3	4	5	6	7
Population	25,533	25,392	25,012	25,975	25,726	25,500	25,377
Deviation	31	-110	-490	473	224	-2	-125
Deviation %	0.1%	-0.4%	-1.9%	1.9%	0.9%	-0.0%	-0.5%
Other	8,301	19,450	19,313	19,188	11,695	13,526	11,287
Other %	32.5%	76.6%	77.2%	73.9%	45.5%	53.0%	44.5%
Latino	14,463	4,558	3,913	5,079	11,928	9,630	11,670
Latino %	56.6%	18.0%	15.6%	19.6%	46.4%	37.8%	46.0%
Asian	2,116	988	1,456	1,219	1,392	1,783	1,710
Asian %	8.3%	3.9%	5.8%	4.7%	5.4%	7.0%	6.7%
Black	653	396	330	489	711	561	710
Black %	2.6%	1.6%	1.3%	1.9%	2.8%	2.2%	2.8%

Citizen Voting Age Population (CVAP)

	1	2	3	4	5	6	7
Total CVAP	14,580	19,324	18,958	21,018	15,889	17,081	15,074
Other CVAP	7,625	16,456	16,378	17,356	11,008	11,856	9,203
Other CVAP %	52.3%	85.2%	86.4%	82.6%	69.3%	69.4%	61.1%
Latino CVAP	4,947	1,759	1,677	2,319	3,867	4,055	4,353
Latino CVAP %	33.9%	9.1%	8.8%	11.0%	24.3%	23.7%	28.9%
Asian CVAP	1,316	745	789	830	771	700	1,135
Asian CVAP %	9.0%	3.9%	4.2%	3.9%	4.9%	4.1%	7.5%
Black CVAP	692	364	114	513	243	470	383
Black CVAP %	4.7%	1.9%	0.6%	2.4%	1.5%	2.8%	2.5%

2020 Census

	1	2	3	4	5	6	7
Population	25,533	25,392	25,012	25,975	25,726	25,500	25,377
Deviation	31	-110	-490	473	224	-2	-125
Deviation %	0.1%	-0.4%	-1.9%	1.9%	0.9%	-0.0%	-0.5%
Other	8,301	19,450	19,313	19,188	11,695	13,526	11,287
Other %	32.5%	76.6%	77.2%	73.9%	45.5%	53.0%	44.5%
Latino							11,670
Latino %							46.0%
Asian							1,710
Asian %	8.3%	3.9%	5.8%	4.7%	5.4%	7.0%	6.7%
Black	653	396	330	489	711	561	710
Black %	2.6%	1.6%	1.3%	1.9%	2.8%	2.2%	2.8%

Total Deviation of 3.8%

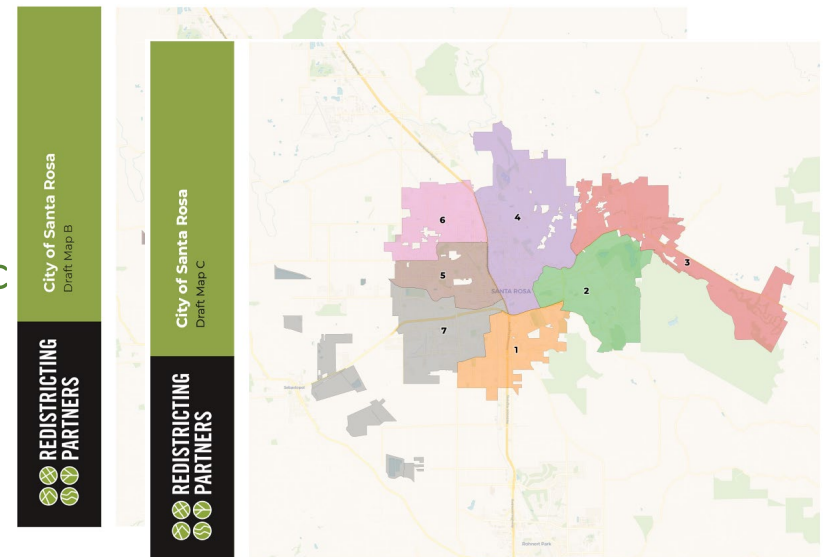
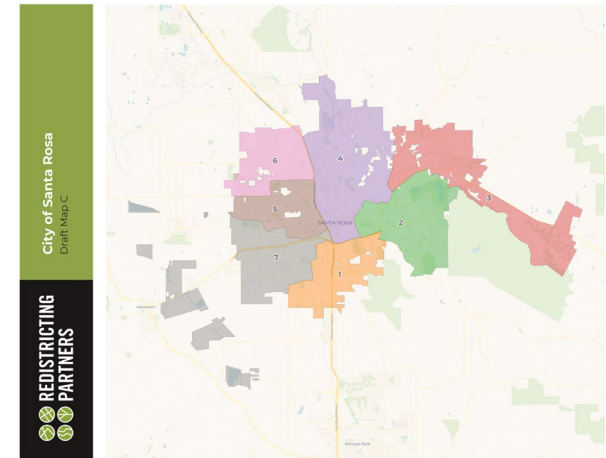
Citizen Voting Age Population (CVAP)

	1	2	3	4	5	6	7
Total CVAP	14,580	19,324	18,958	21,018	15,889	17,081	15,074
Other CVAP	7,625	16,456	16,378	17,356	11,008	11,856	9,203
Other CVAP %	52.3%	85.2%	86.4%	82.6%	69.3%	69.4%	61.1%
Latino CVAP	4,947	1,759	1,677	2,319	3,867	4,055	4,353
Latino CVAP %	33.9%	9.1%	8.8%	11.0%	24.3%	23.7%	28.9%
Asian CVAP	1,316	745	789	830	771	700	1,135
Asian CVAP %	9.0%	3.9%	4.2%	3.9%	4.9%	4.1%	7.5%
Black CVAP	692	364	114	513	243	470	383
Black CVAP %	4.7%	1.9%	0.6%	2.4%	1.5%	2.8%	2.5%

What's Next

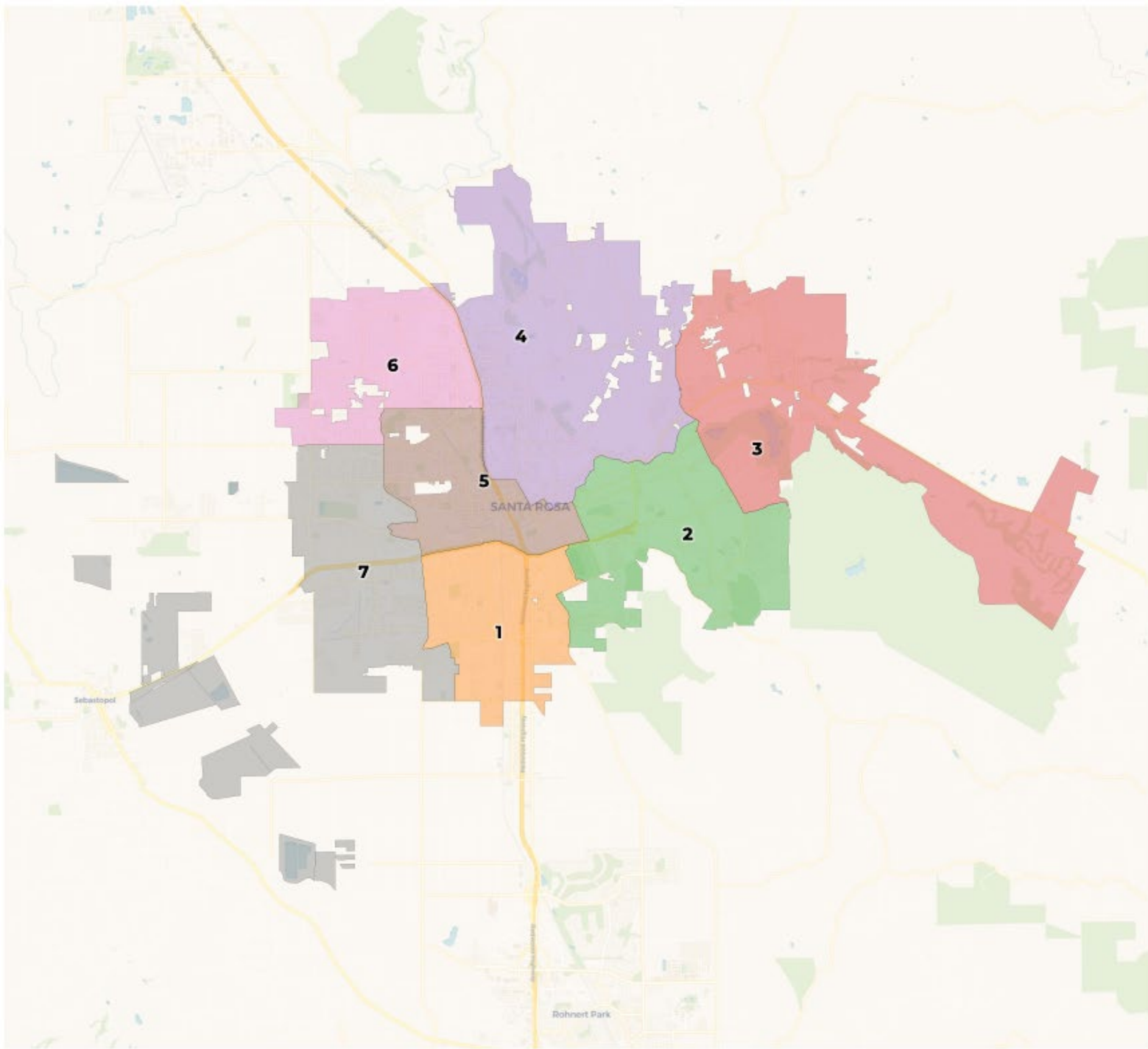
The City Council can make use of these mapping options in a number of ways.

- **Identify preferred plan(s)** with an understanding that none of these are final plans. *It is an iterative process.*
- **Suggest possible changes** –adjustments can be made to any of the draft plans.
- **Provide direction** for the preparation of **new draft map(s)** to be put out for public input and future review and adoption.
- Consider new draft maps at a public hearing scheduled for the next regularly scheduled Council meeting.

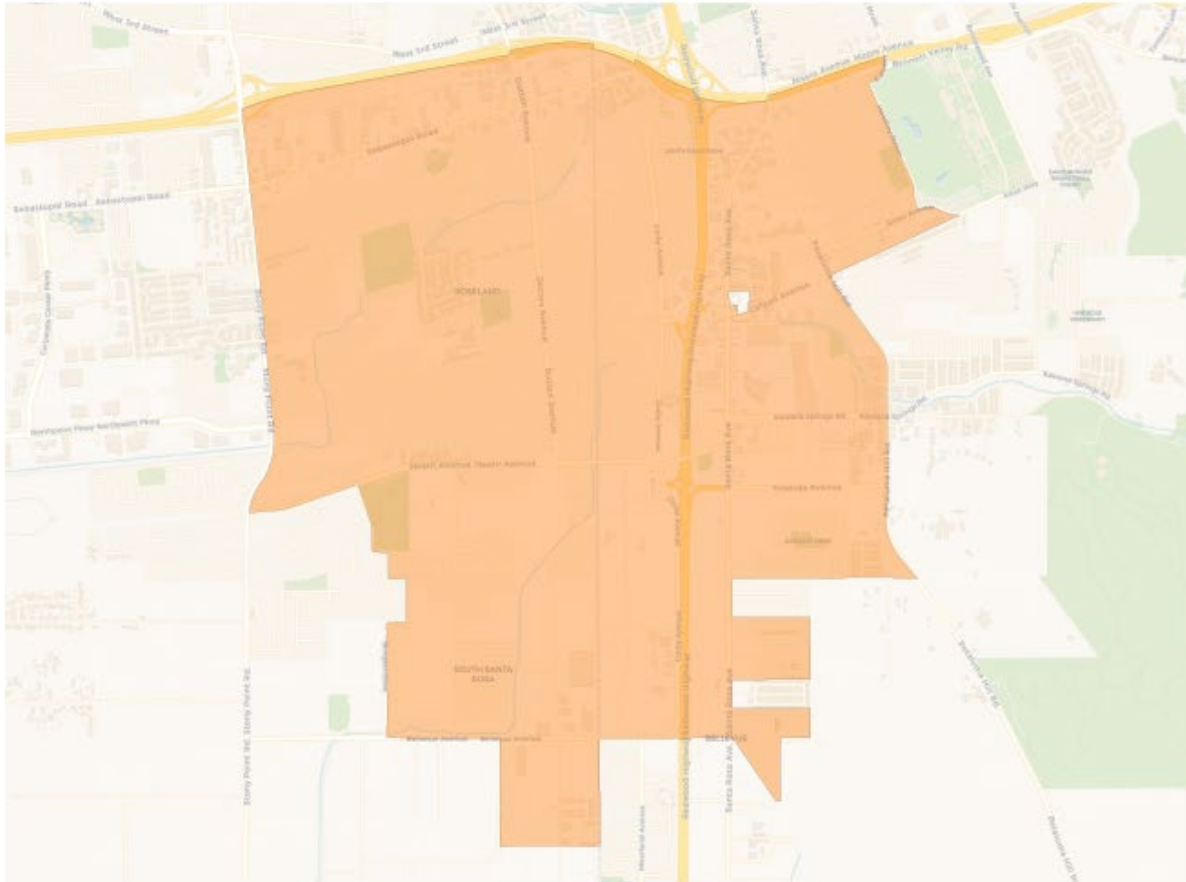




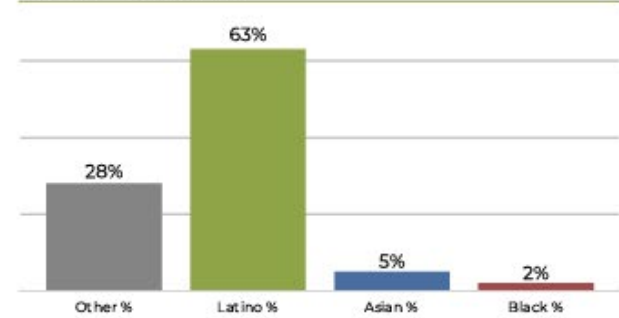
REDISTRICTING PARTNERS



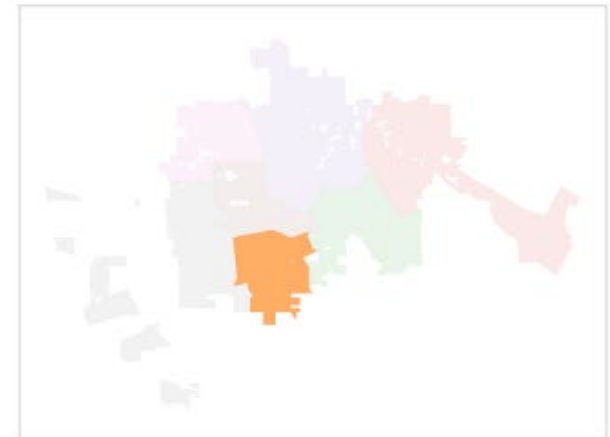
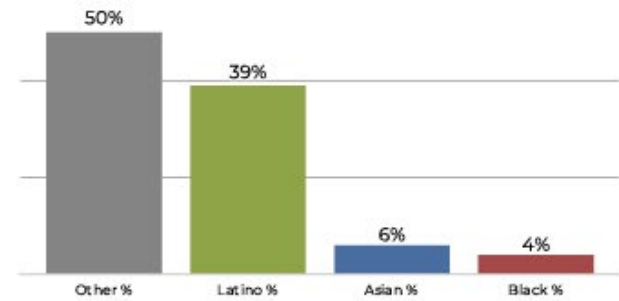
District 1



2020 Census

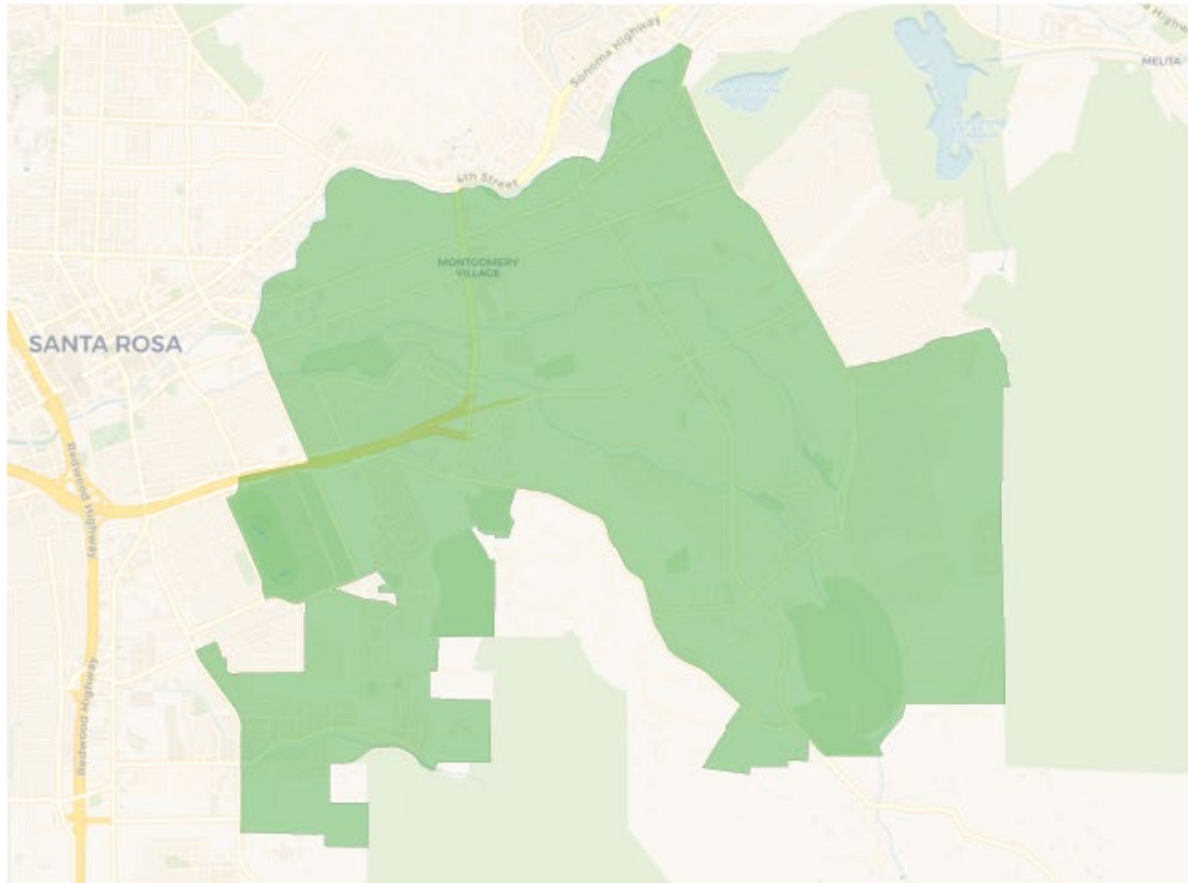


Citizen Voting Age Population

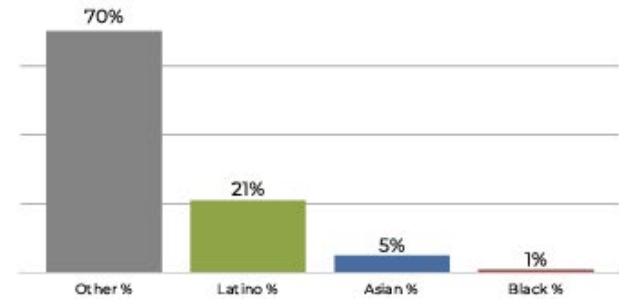


Population	Deviation	Deviation %	Other	Other %	Latino	Latino %	Asian	Asian %	Black	Black %
25,289	-213	-0.8%	7,309	28.9%	16,134	63.8%	1,316	5.2%	530	2.1%
Total CVAP	Other CVAP	Other CVAP %	Latino CVAP	Latino CVAP %	Asian CVAP	Asian CVAP %	Black CVAP	Black CVAP %		
12,727	6,377	50.1%	4,994	39.2%	767	6.0%	589	4.6%		

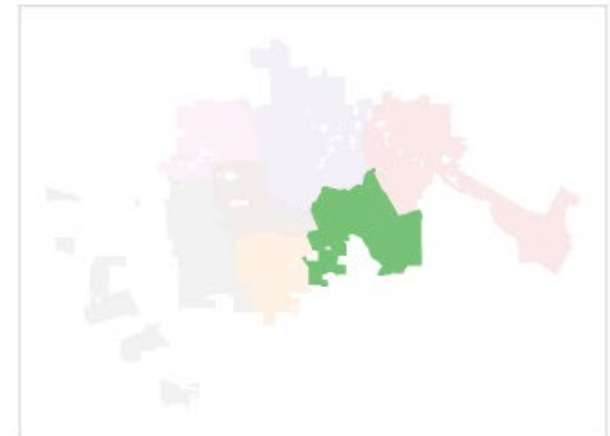
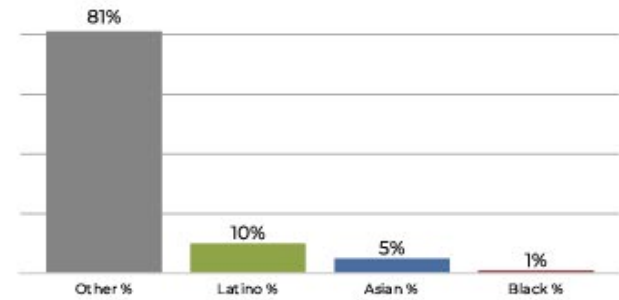
District 2



2020 Census

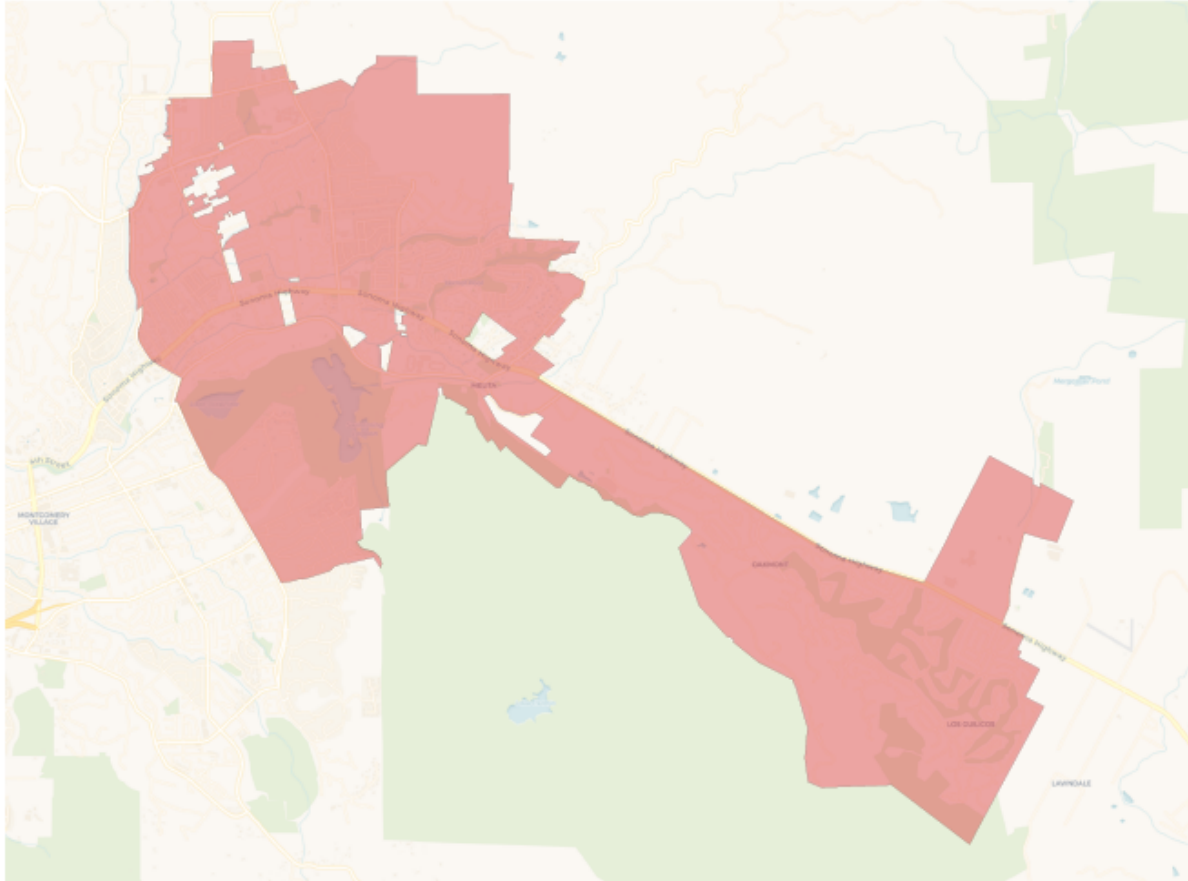


Citizen Voting Age Population

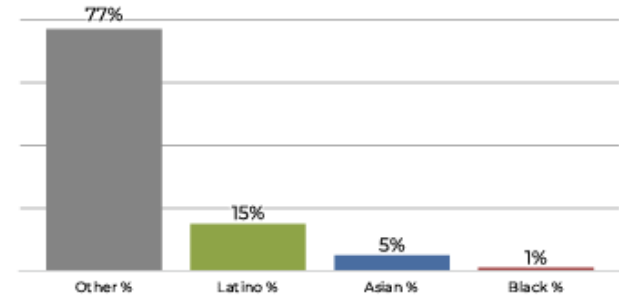


Population	Deviation	Deviation %	Other	Other %	Latino	Latino %	Asian	Asian %	Black	Black %
26,158	656	2.6%	18,518	70.8%	5,667	21.7%	1,470	5.6%	503	1.9%
Total CVAP	Other CVAP	Other CVAP %	Latino CVAP	Latino CVAP %	Asian CVAP	Asian CVAP %	Black CVAP	Black CVAP %		
19,448	15,877	81.6%	2,075	10.7%	1,125	5.8%	371	1.9%		

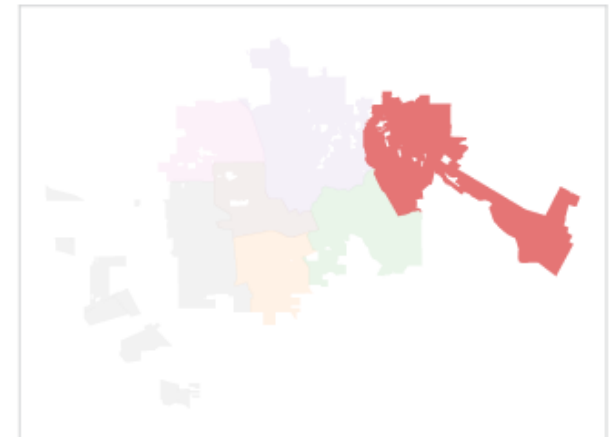
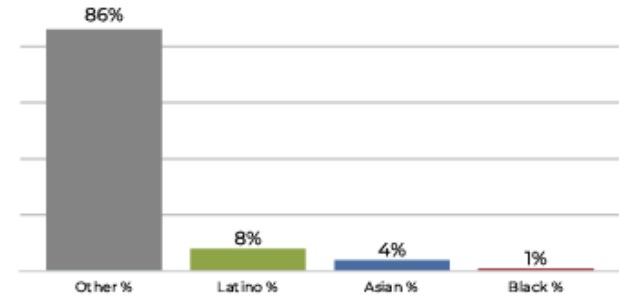
District 3



2020 Census

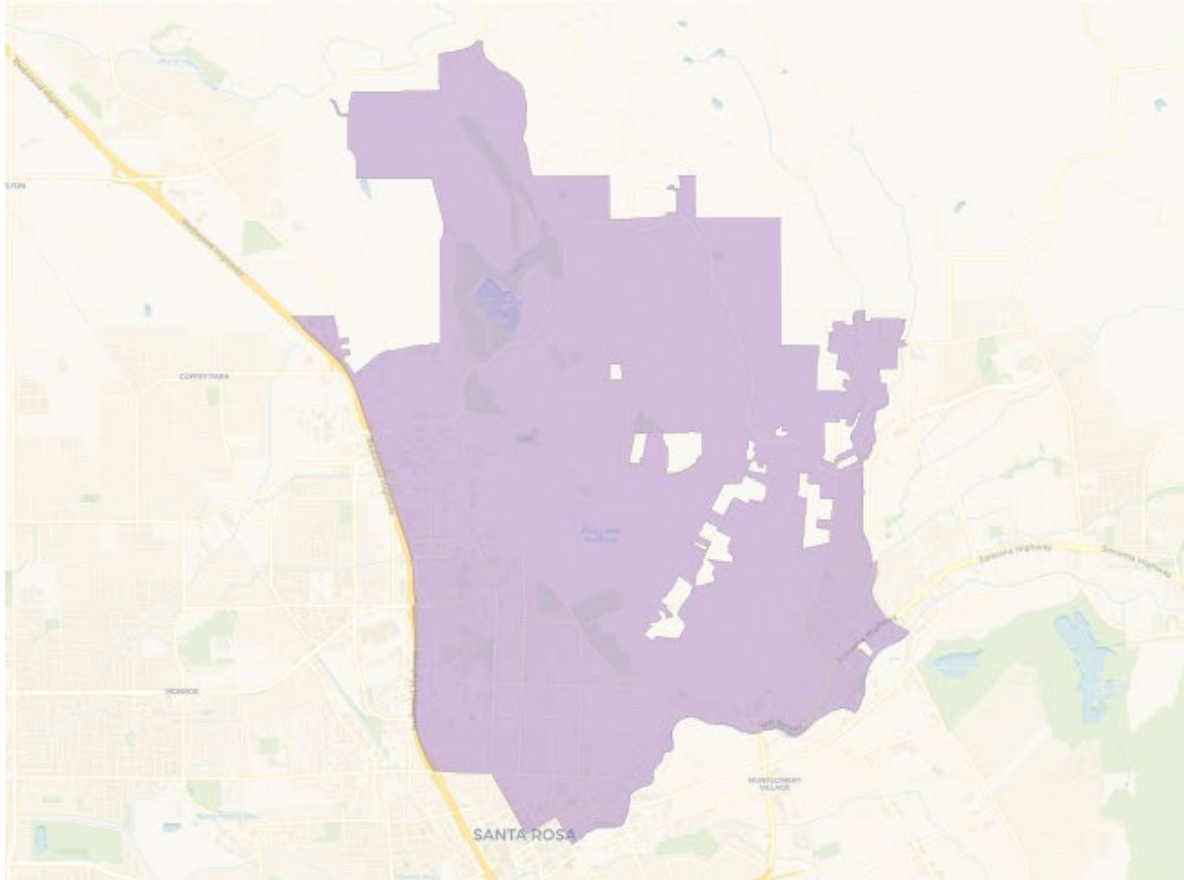


Citizen Voting Age Population

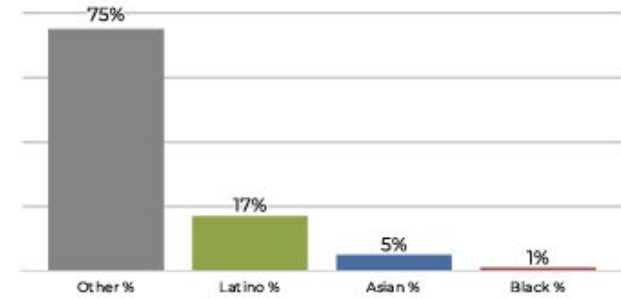


Population	Deviation	Deviation %	Other	Other %	Latino	Latino %	Asian	Asian %	Black	Black %
25,677	175	0.7%	19,947	77.7%	3,950	15.4%	1,462	5.7%	318	1.2%
Total CVAP	Other CVAP	Other CVAP %	Latino CVAP	Latino CVAP %	Asian CVAP	Asian CVAP %	Black CVAP	Black CVAP %		
19,151	16,518	86.3%	1,622	8.5%	824	4.3%	187	1.0%		

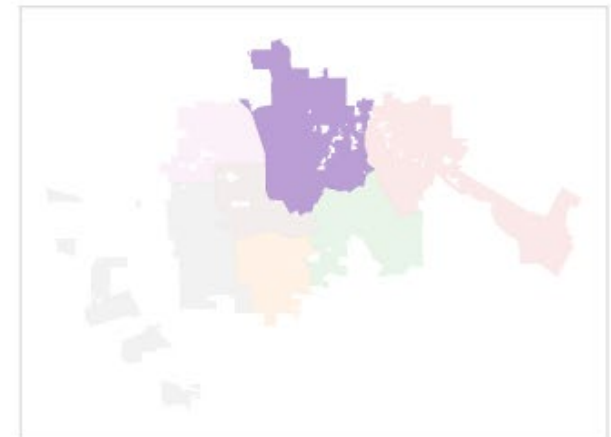
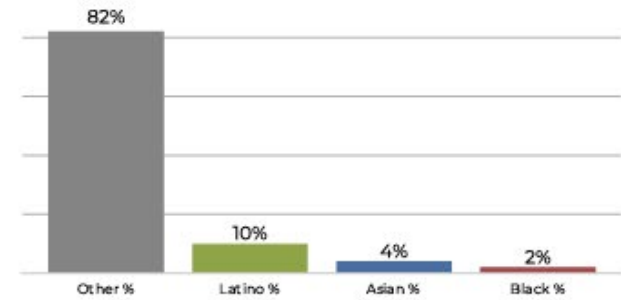
District 4



2020 Census

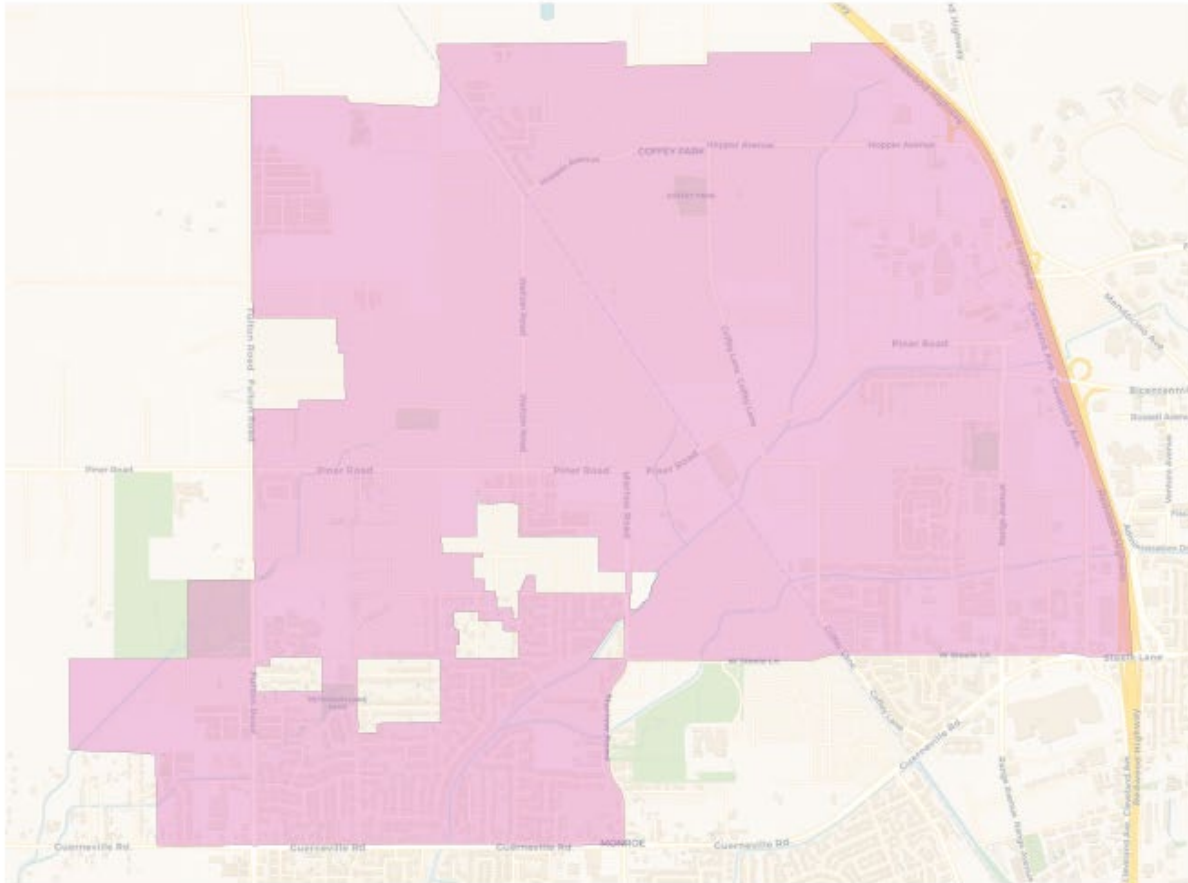


Citizen Voting Age Population

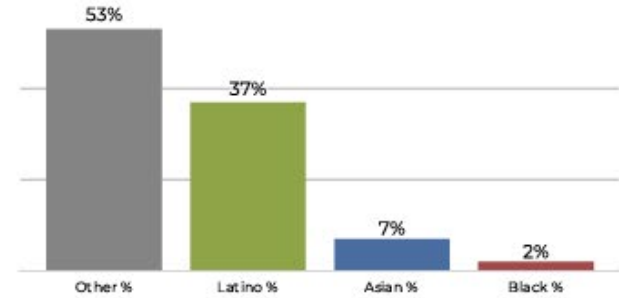


Population	Deviation	Deviation %	Other	Other %	Latino	Latino %	Asian	Asian %	Black	Black %
25,296	-206	-0.8%	19,161	75.7%	4,416	17.5%	1,272	5.0%	447	1.8%
Total CVAP	Other CVAP	Other CVAP %	Latino CVAP	Latino CVAP %	Asian CVAP	Asian CVAP %	Black CVAP	Black CVAP %		
20,756	17,206	82.9%	2,235	10.8%	870	4.2%	445	2.1%		

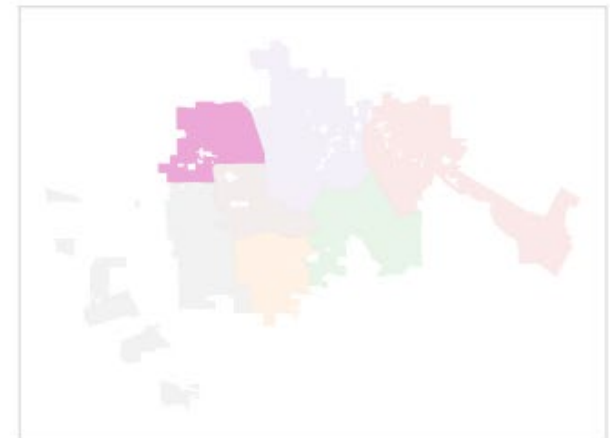
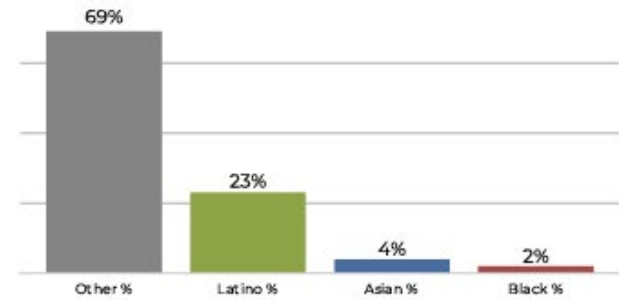
District 6



2020 Census

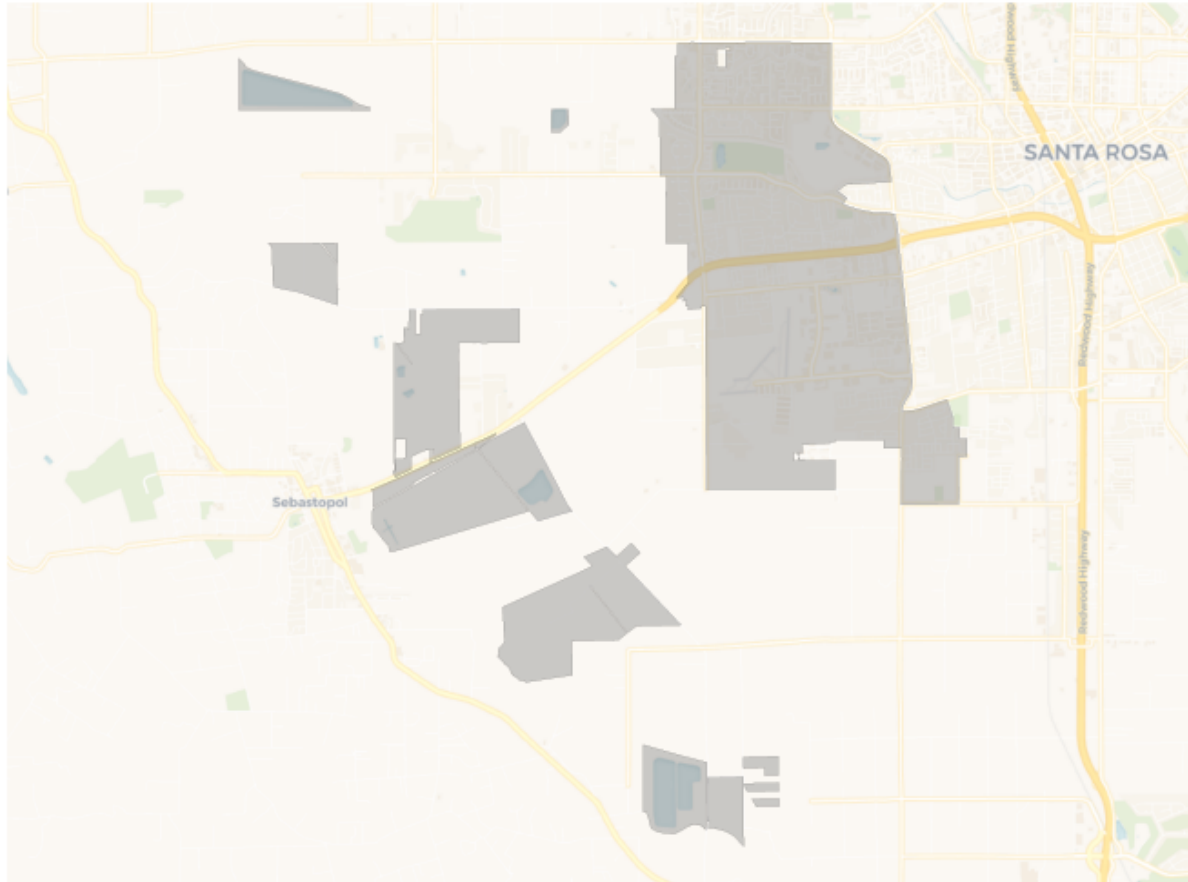


Citizen Voting Age Population

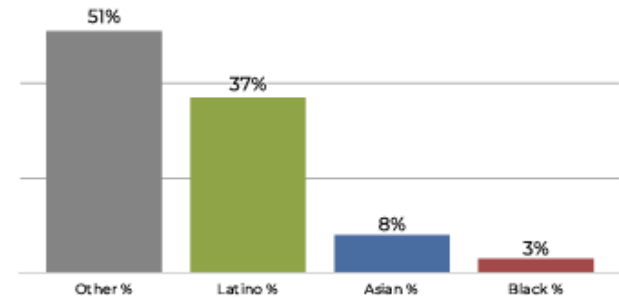


Population	Deviation	Deviation %	Other	Other %	Latino	Latino %	Asian	Asian %	Black	Black %
25,500	-2	-0.0%	13,526	53.0%	9,630	37.8%	1,783	7.0%	561	2.2%
Total CVAP	Other CVAP	Other CVAP %	Latino CVAP	Latino CVAP %	Asian CVAP	Asian CVAP %	Black CVAP	Black CVAP %		
17,081	11,856	69.4%	4,055	23.7%	700	4.1%	470	2.8%		

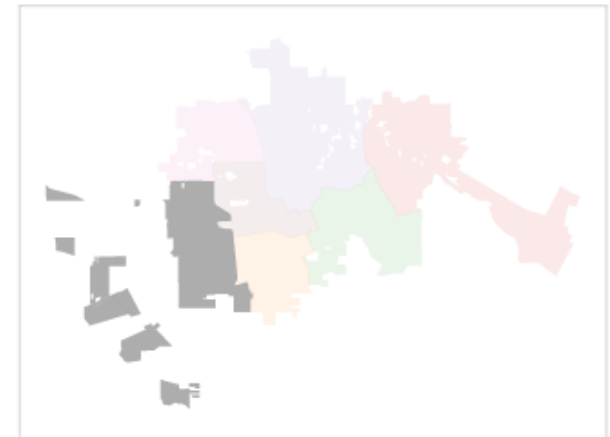
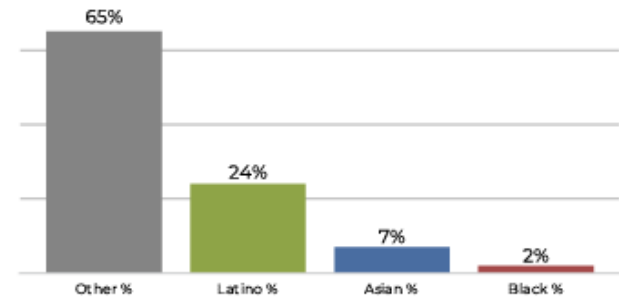
District 7



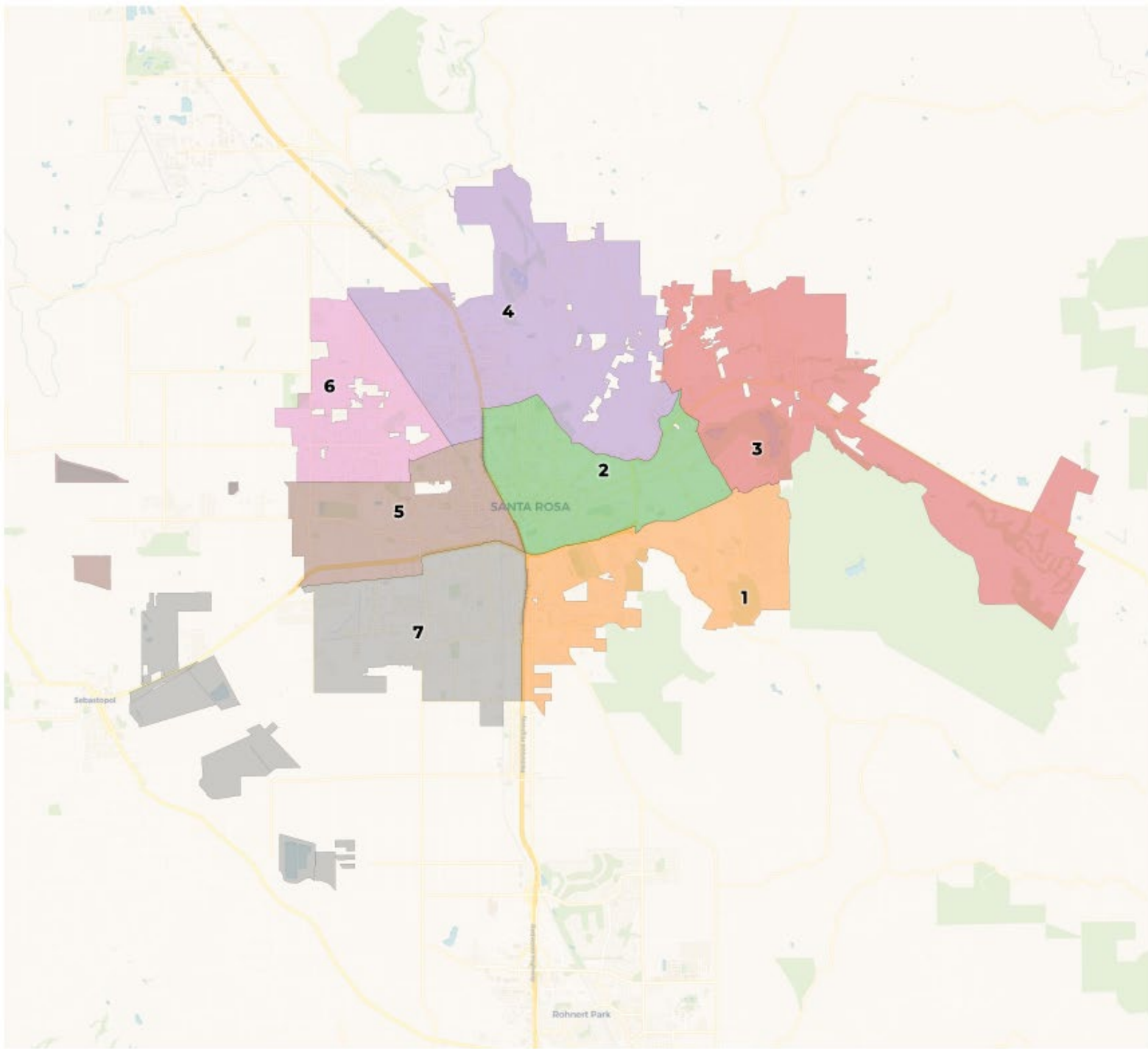
2020 Census



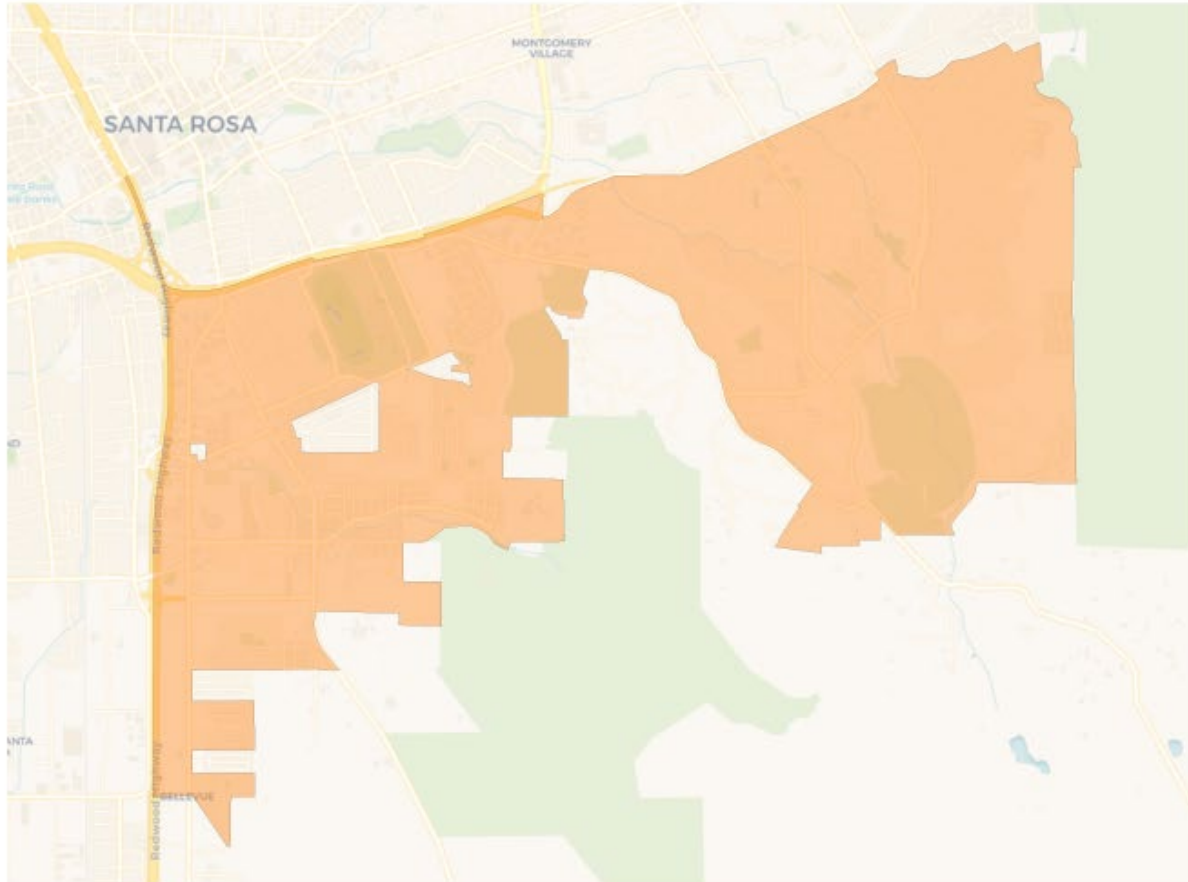
Citizen Voting Age Population



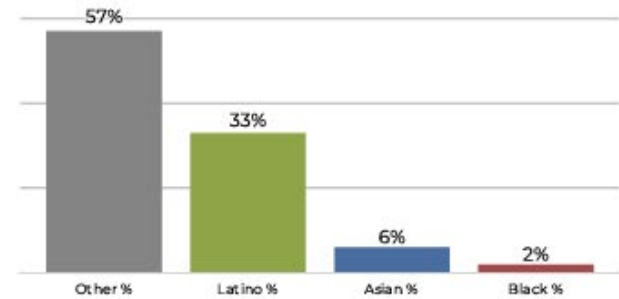
Population	Deviation	Deviation %	Other	Other %	Latino	Latino %	Asian	Asian %	Black	Black %
25,379	-123	-0.5%	13,065	51.5%	9,496	37.4%	2,054	8.1%	764	3.0%
Total CVAP	Other CVAP	Other CVAP %	Latino CVAP	Latino CVAP %	Asian CVAP	Asian CVAP %	Black CVAP	Black CVAP %		
16,921	11,115	65.7%	4,123	24.4%	1,248	7.4%	435	2.6%		



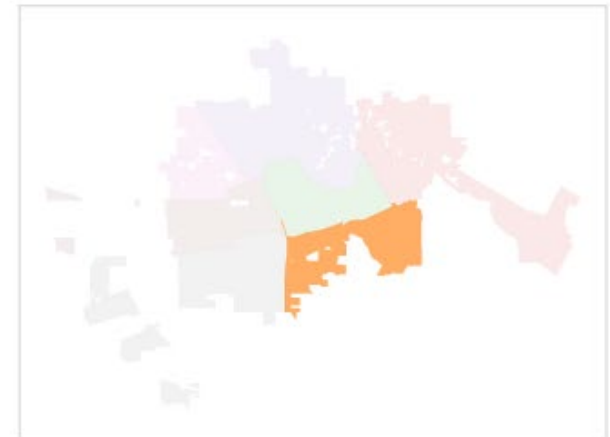
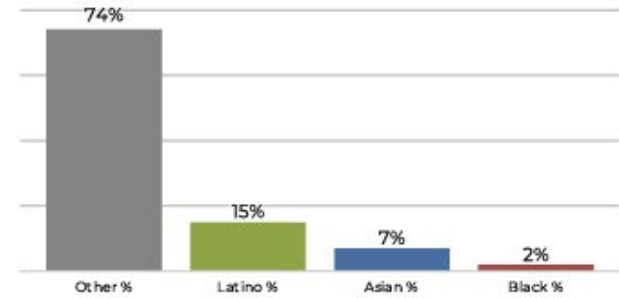
District 1



2020 Census

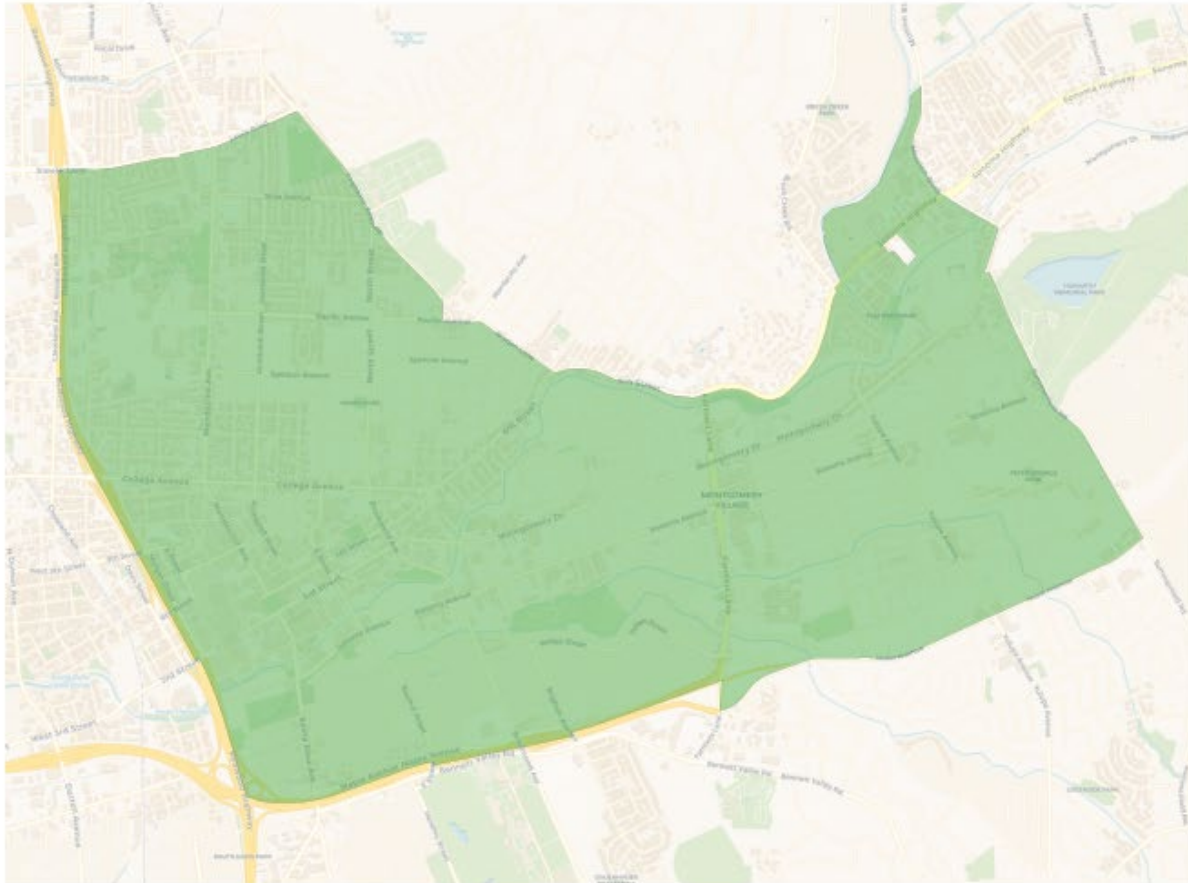


Citizen Voting Age Population

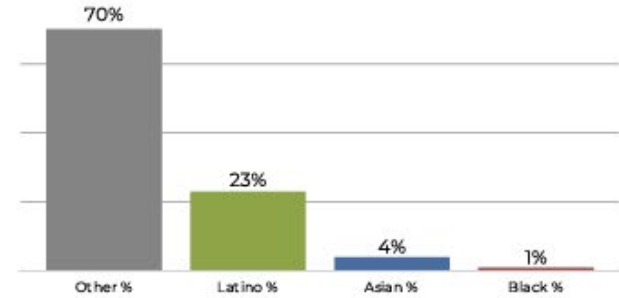


Population	Deviation	Deviation %	Other	Other %	Latino	Latino %	Asian	Asian %	Black	Black %
24,910	-592	-2.3%	14,384	57.7%	8,258	33.2%	1,688	6.8%	580	2.3%
Total CVAP	Other CVAP	Other CVAP %	Latino CVAP	Latino CVAP %	Asian CVAP	Asian CVAP %	Black CVAP	Black CVAP %		
16,454	12,201	74.2%	2,515	15.3%	1,305	7.9%	433	2.6%		

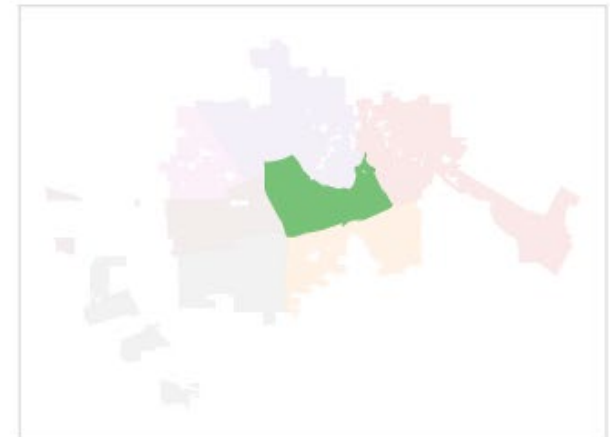
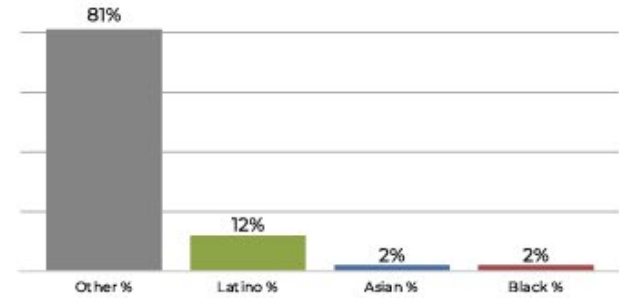
District 2



2020 Census

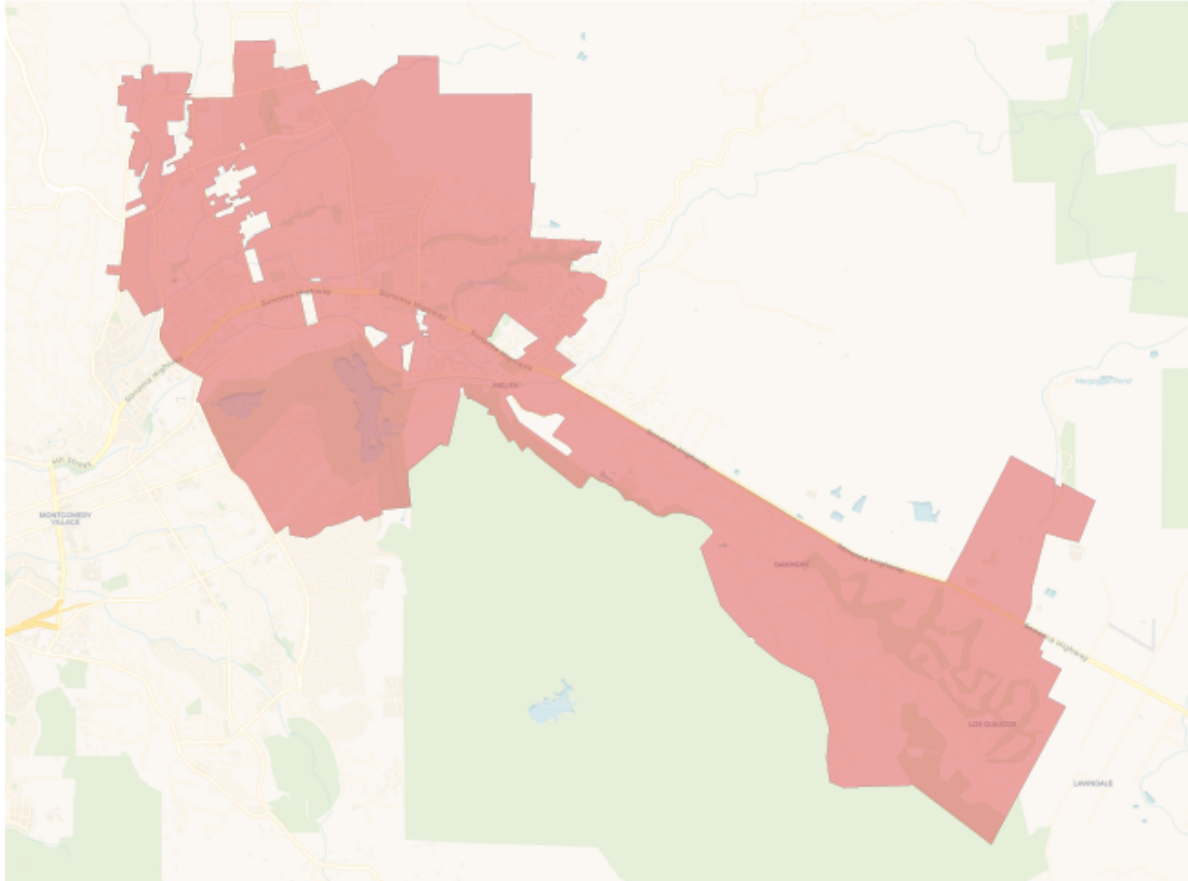


Citizen Voting Age Population

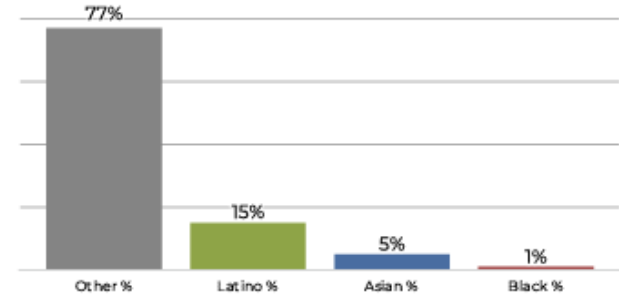


Population	Deviation	Deviation %	Other	Other %	Latino	Latino %	Asian	Asian %	Black	Black %
25,416	-86	-0.3%	17,878	70.3%	6,032	23.7%	1,016	4.0%	490	1.9%
Total CVAP	Other CVAP	Other CVAP %	Latino CVAP	Latino CVAP %	Asian CVAP	Asian CVAP %	Black CVAP	Black CVAP %		
19,543	15,999	81.9%	2,488	12.7%	554	2.8%	502	2.6%		

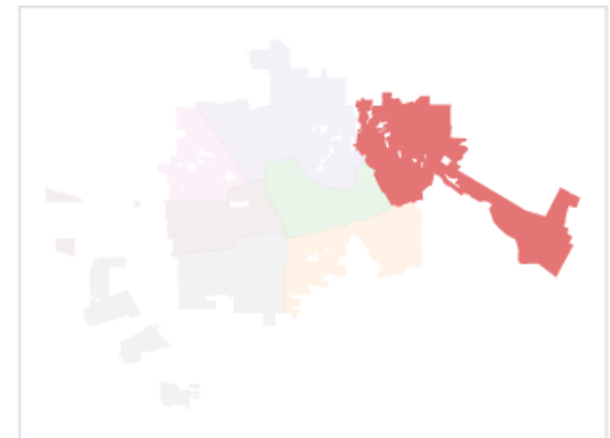
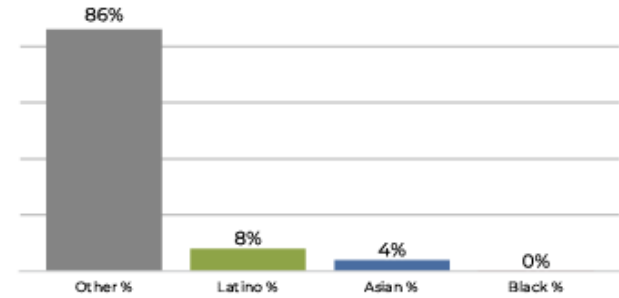
District 3



2020 Census

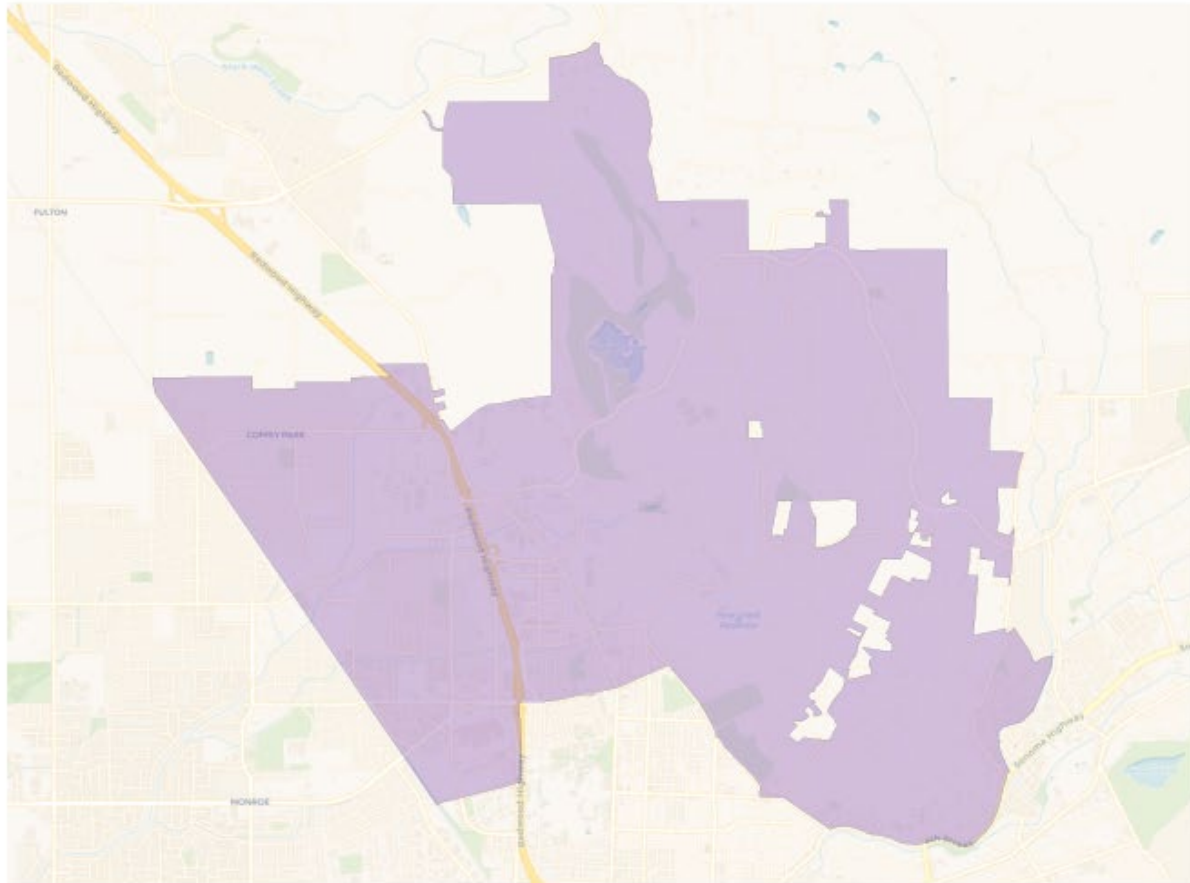


Citizen Voting Age Population

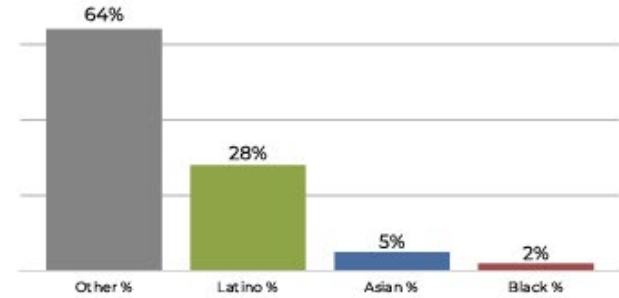


Population	Deviation	Deviation %	Other	Other %	Latino	Latino %	Asian	Asian %	Black	Black %
26,208	706	2.8%	20,279	77.4%	4,080	15.6%	1,511	5.8%	338	1.3%
Total CVAP	Other CVAP	Other CVAP %	Latino CVAP	Latino CVAP %	Asian CVAP	Asian CVAP %	Black CVAP	Black CVAP %		
19,613	16,897	86.2%	1,723	8.8%	826	4.2%	167	0.9%		

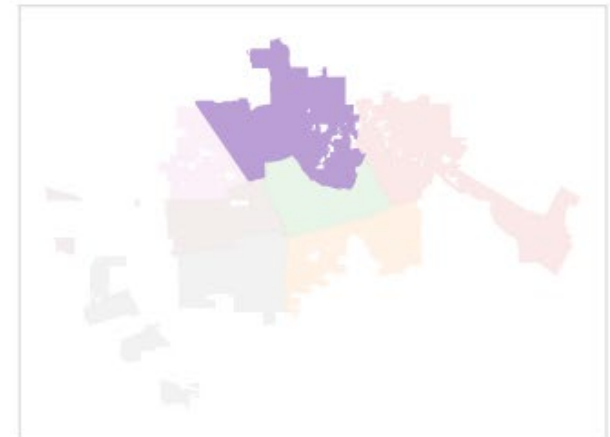
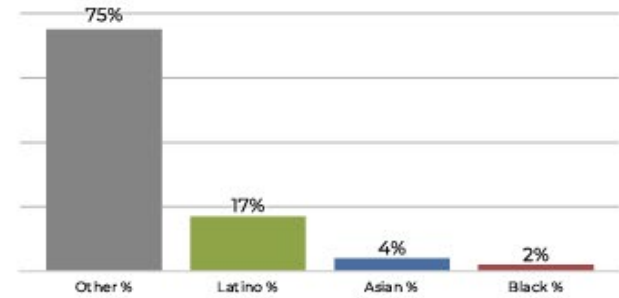
District 4



2020 Census

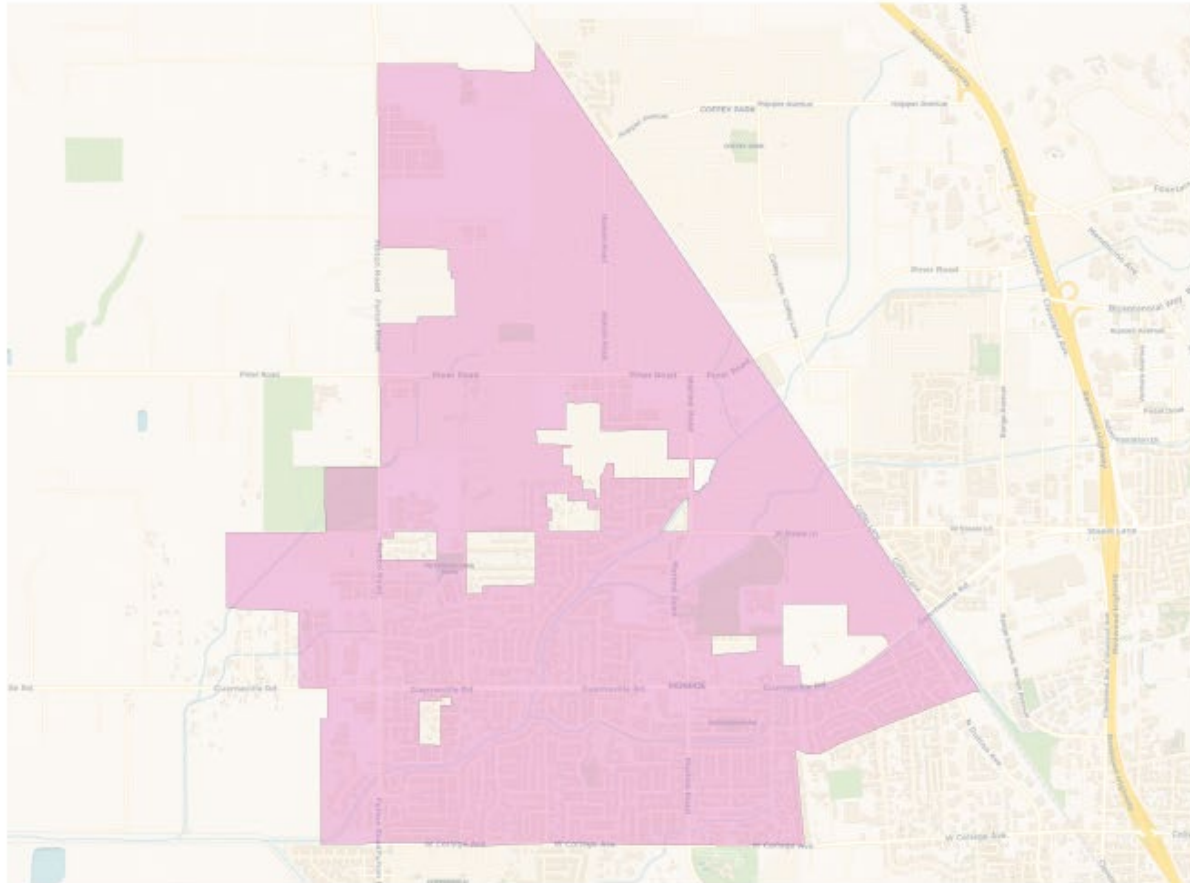


Citizen Voting Age Population

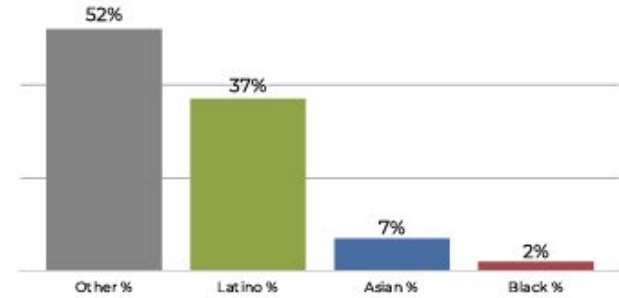


Population	Deviation	Deviation %	Other	Other %	Latino	Latino %	Asian	Asian %	Black	Black %
25,771	269	1.1%	16,564	64.3%	7,240	28.1%	1,460	5.7%	507	2.0%
Total CVAP	Other CVAP	Other CVAP %	Latino CVAP	Latino CVAP %	Asian CVAP	Asian CVAP %	Black CVAP	Black CVAP %		
19,514	14,771	75.7%	3,324	17.0%	943	4.8%	476	2.4%		

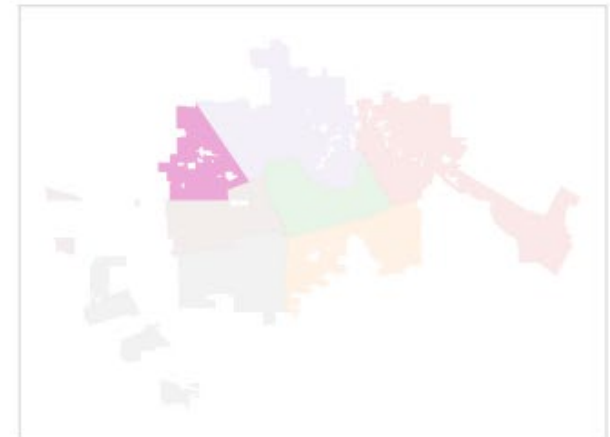
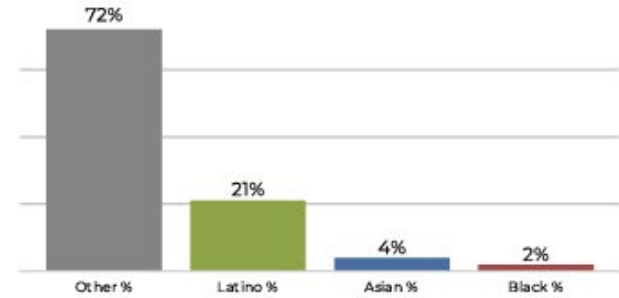
District 6



2020 Census

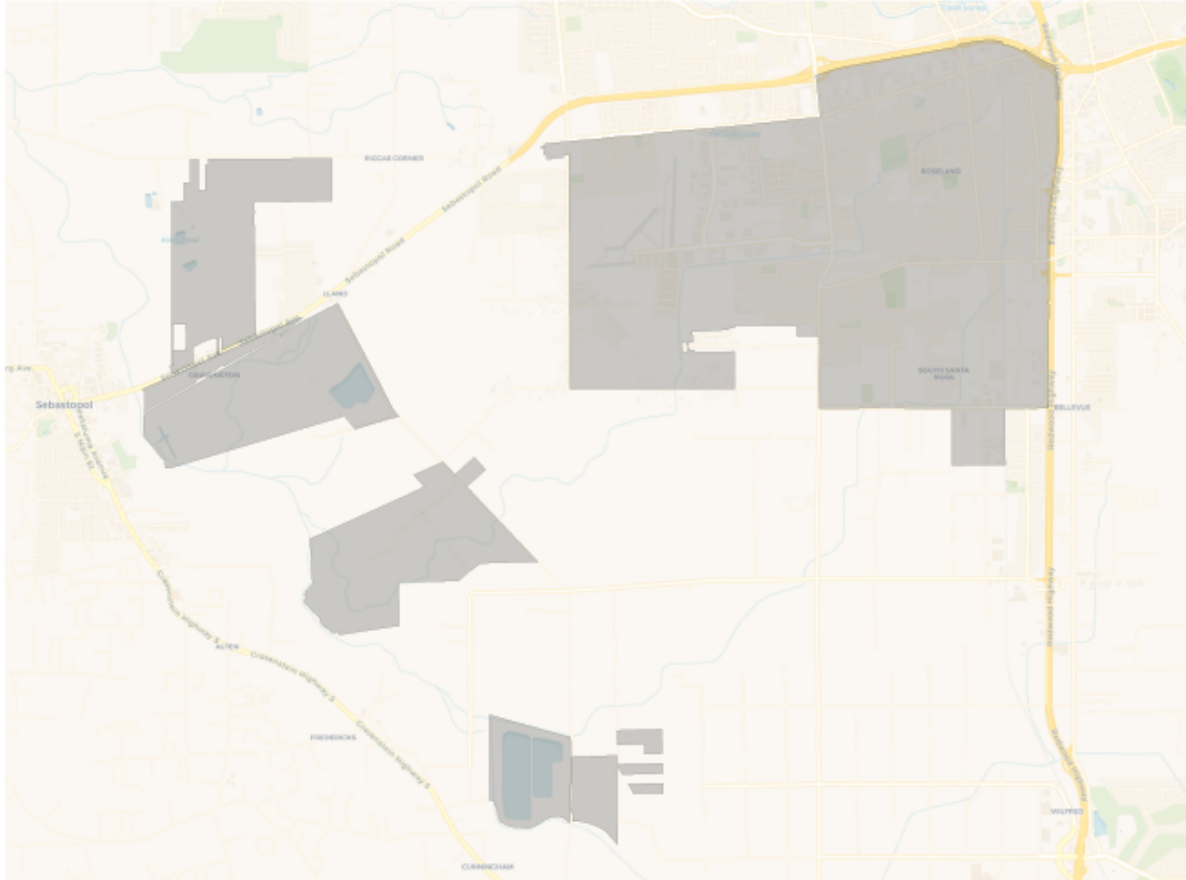


Citizen Voting Age Population

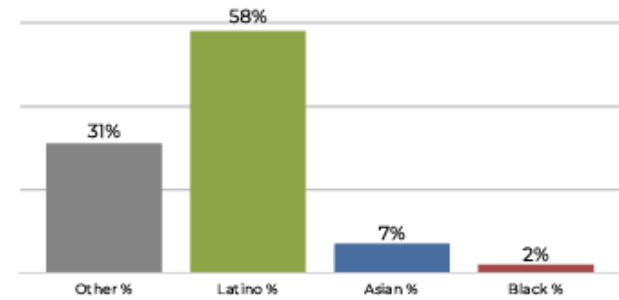


Population	Deviation	Deviation %	Other	Other %	Latino	Latino %	Asian	Asian %	Black	Black %
24,917	-585	-2.3%	13,040	52.3%	9,297	37.3%	1,891	7.6%	689	2.8%
Total CVAP	Other CVAP	Other CVAP %	Latino CVAP	Latino CVAP %	Asian CVAP	Asian CVAP %	Black CVAP	Black CVAP %		
16,761	12,118	72.3%	3,579	21.4%	671	4.0%	393	2.3%		

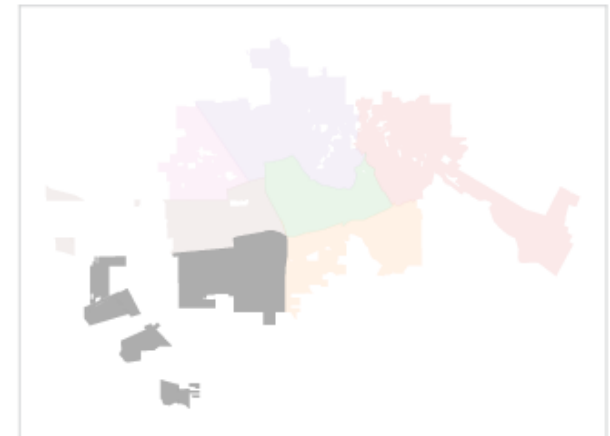
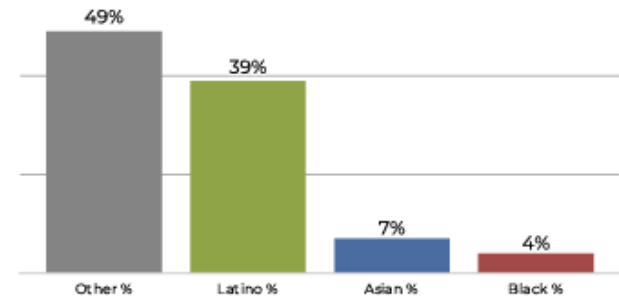
District 7



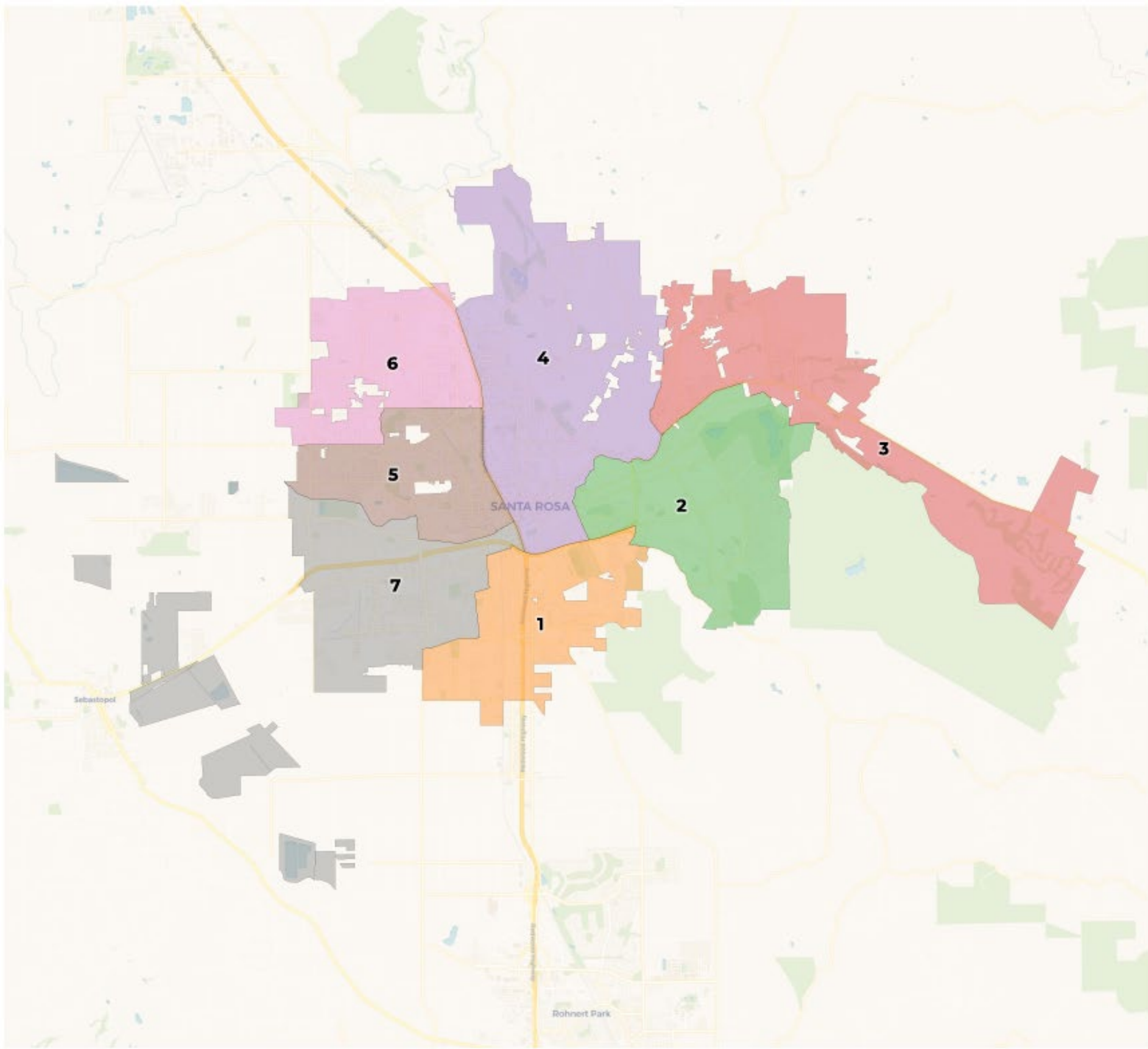
2020 Census



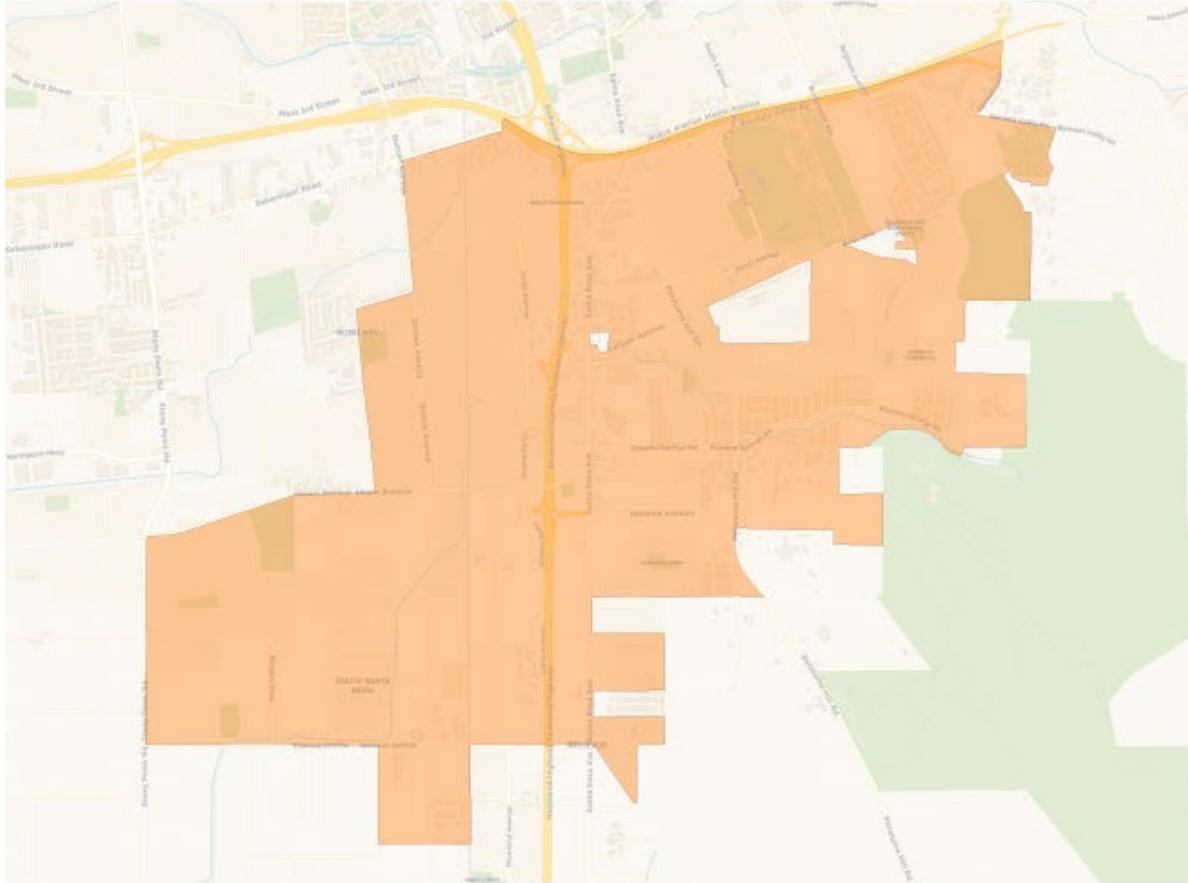
Citizen Voting Age Population



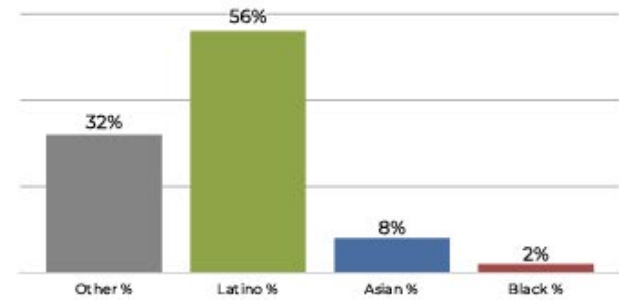
Population	Deviation	Deviation %	Other	Other %	Latino	Latino %	Asian	Asian %	Black	Black %
26,315	813	3.2%	8,301	31.5%	15,470	58.8%	1,878	7.1%	666	2.5%
Total CVAP	Other CVAP	Other CVAP %	Latino CVAP	Latino CVAP %	Asian CVAP	Asian CVAP %	Black CVAP	Black CVAP %		
14,944	7,382	49.4%	5,851	39.2%	1,069	7.2%	642	4.3%		



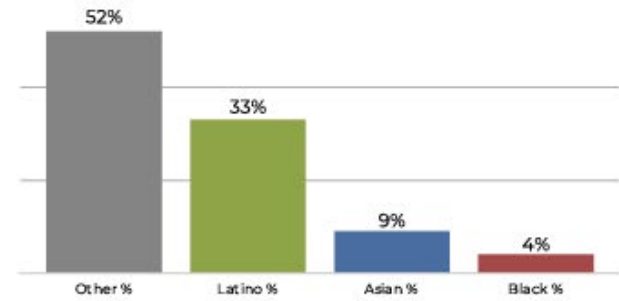
District 1



2020 Census

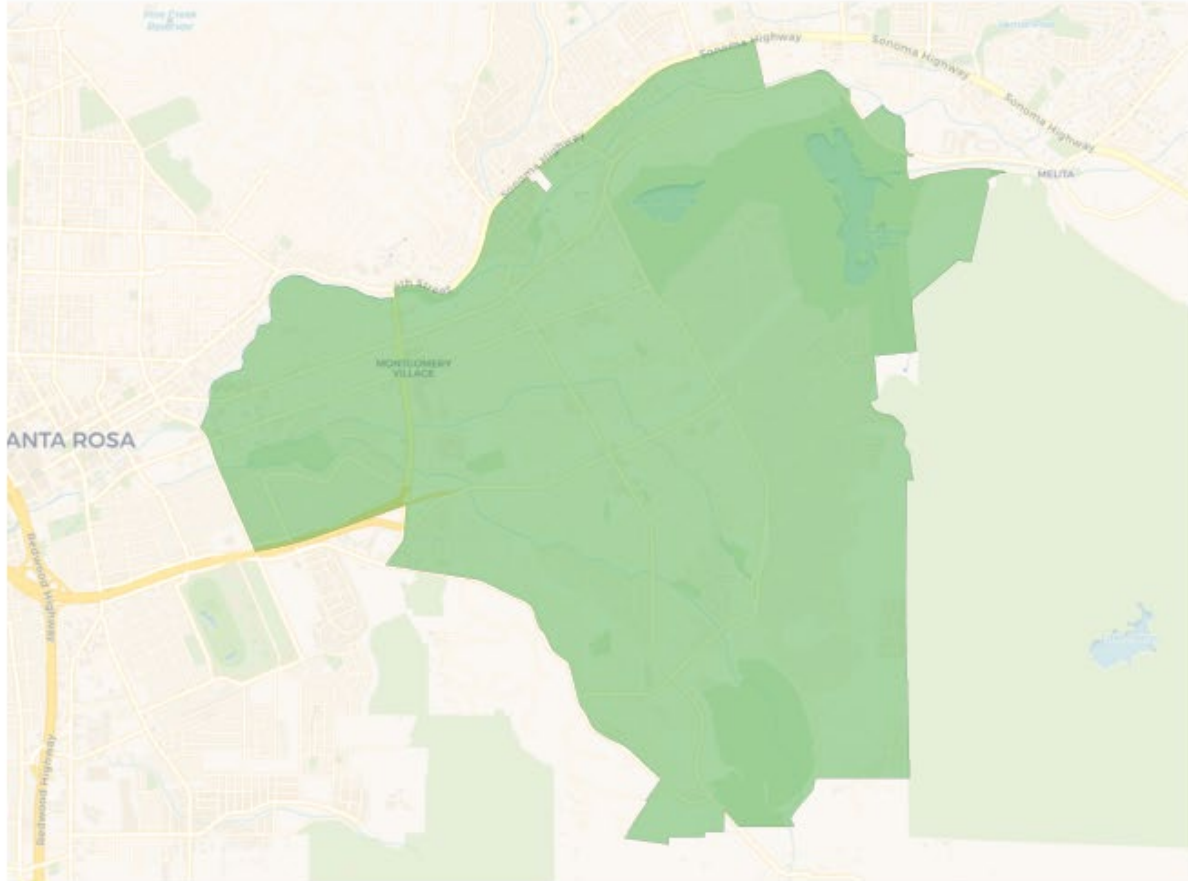


Citizen Voting Age Population

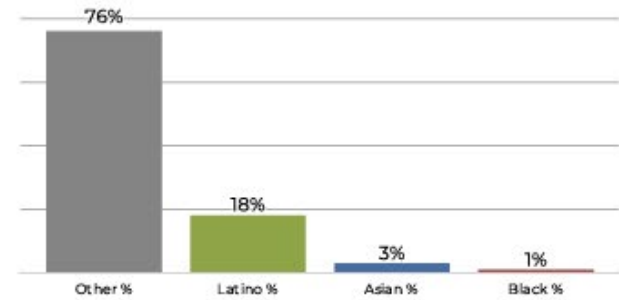


Population	Deviation	Deviation %	Other	Other %	Latino	Latino %	Asian	Asian %	Black	Black %
25,533	31	0.1%	8,301	32.5%	14,463	56.6%	2,116	8.3%	653	2.6%
Total CVAP	Other CVAP	Other CVAP %	Latino CVAP	Latino CVAP %	Asian CVAP	Asian CVAP %	Black CVAP	Black CVAP %		
14,580	7,625	52.3%	4,947	33.9%	1,316	9.0%	692	4.7%		

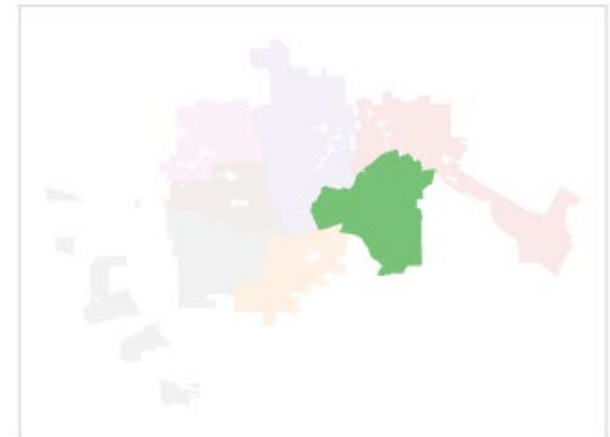
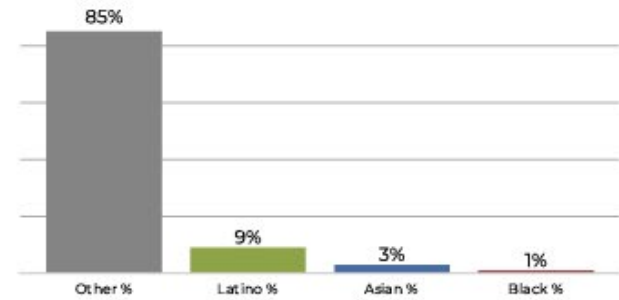
District 2



2020 Census

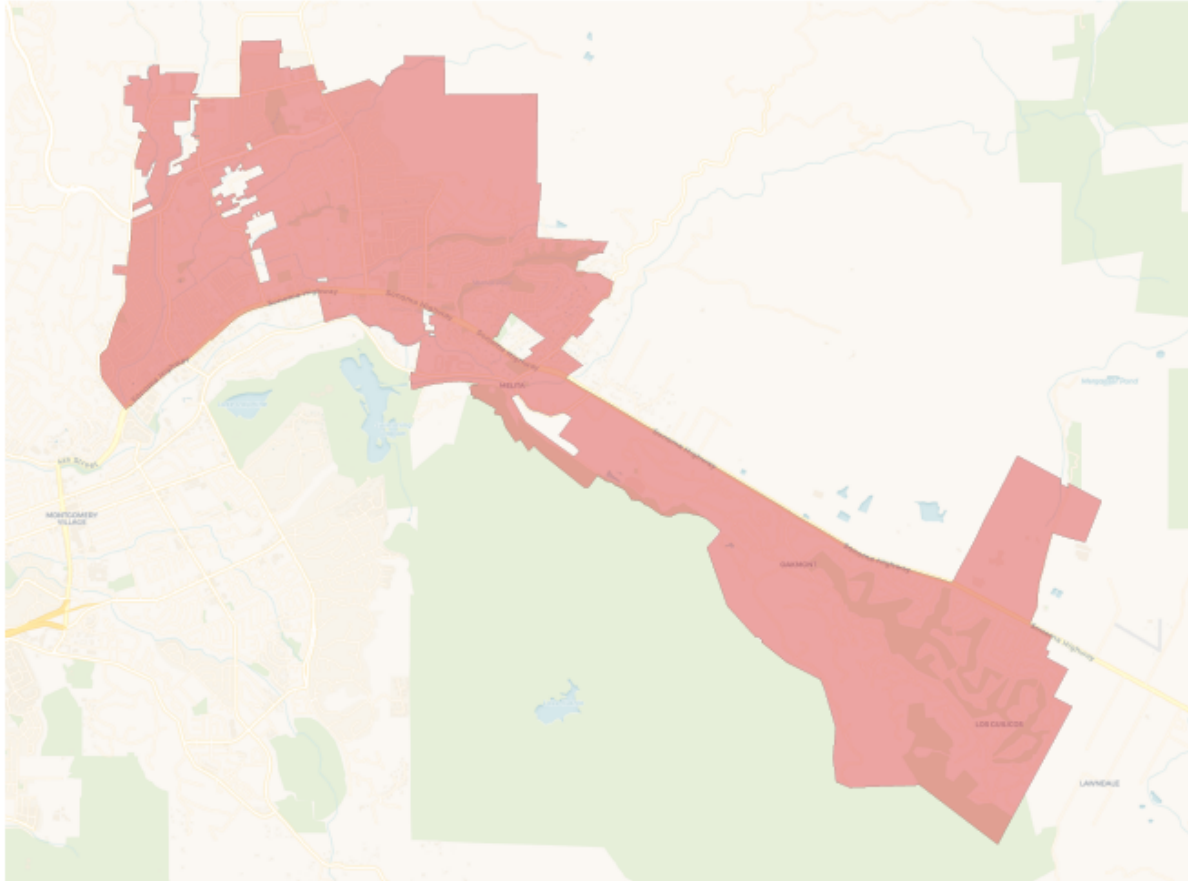


Citizen Voting Age Population

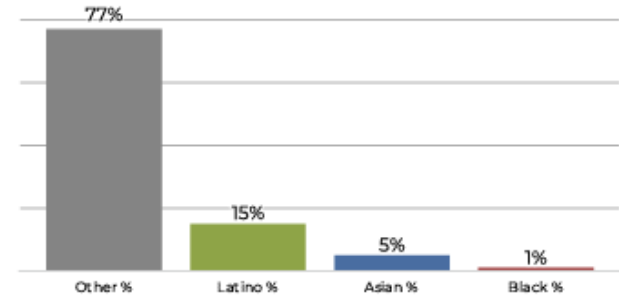


Population	Deviation	Deviation %	Other	Other %	Latino	Latino %	Asian	Asian %	Black	Black %
25,392	-110	-0.4%	19,450	76.6%	4,558	18.0%	988	3.9%	396	1.6%
Total CVAP	Other CVAP	Other CVAP %	Latino CVAP	Latino CVAP %	Asian CVAP	Asian CVAP %	Black CVAP	Black CVAP %		
19,324	16,456	85.2%	1,759	9.1%	745	3.9%	364	1.9%		

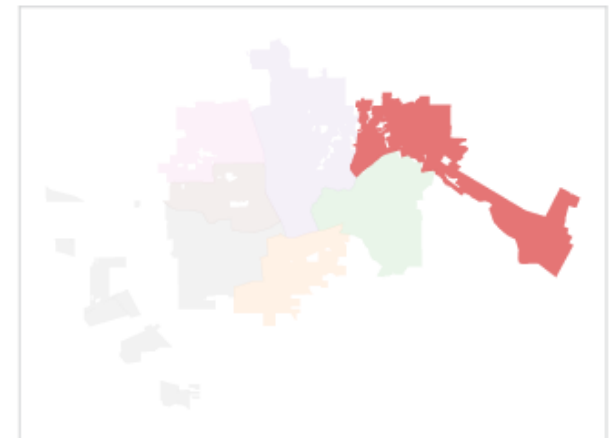
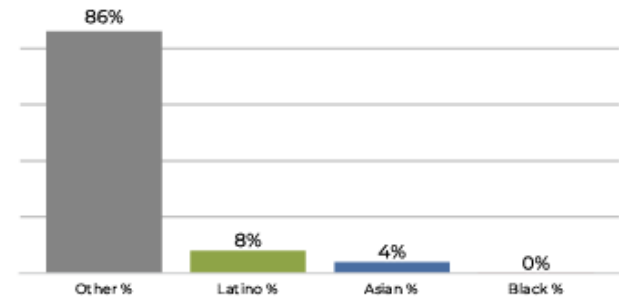
District 3



2020 Census

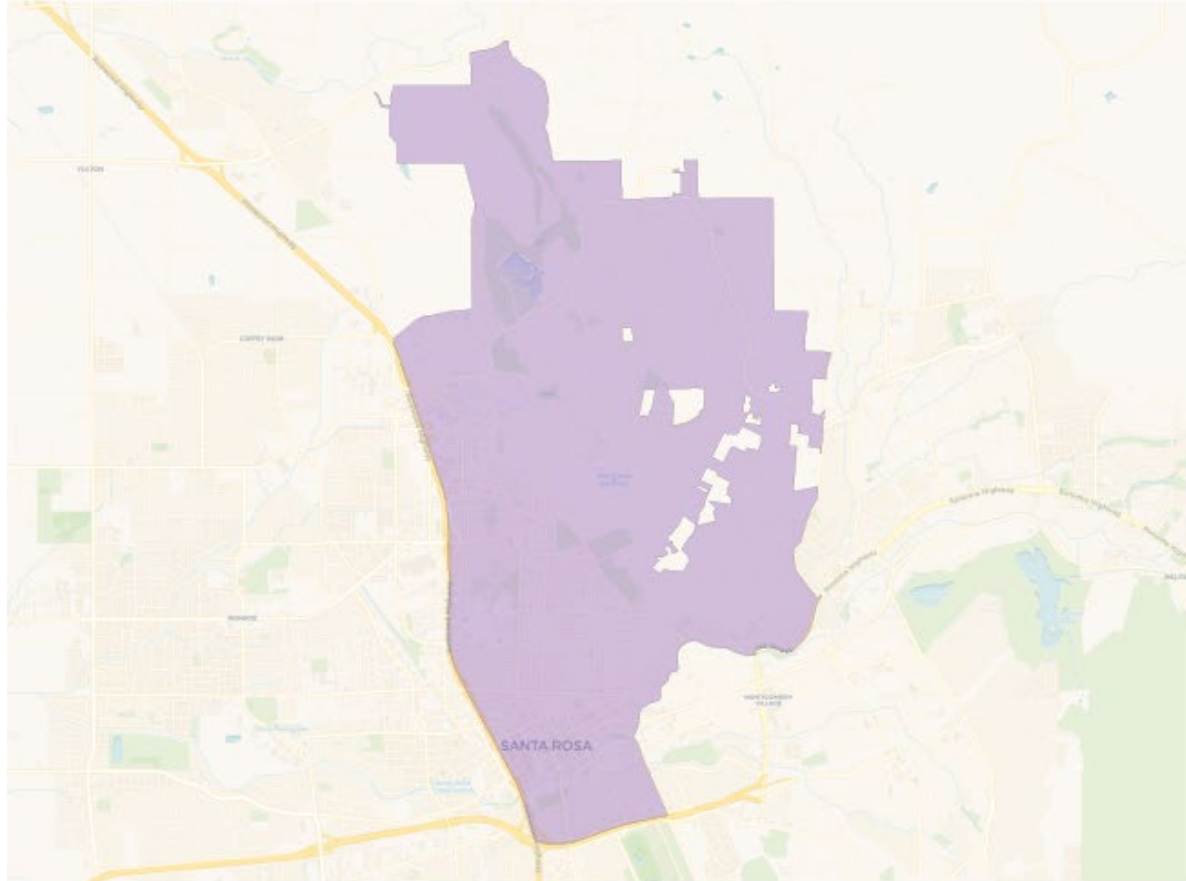


Citizen Voting Age Population

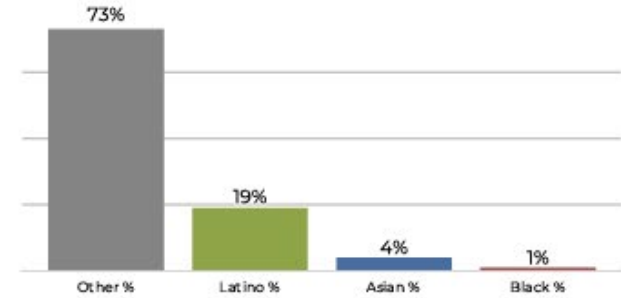


Population	Deviation	Deviation %	Other	Other %	Latino	Latino %	Asian	Asian %	Black	Black %
25,012	-490	-1.9%	19,313	77.2%	3,913	15.6%	1,456	5.8%	330	1.3%
Total CVAP	Other CVAP	Other CVAP %	Latino CVAP	Latino CVAP %	Asian CVAP	Asian CVAP %	Black CVAP	Black CVAP %		
18,958	16,378	86.4%	1,677	8.8%	789	4.2%	114	0.6%		

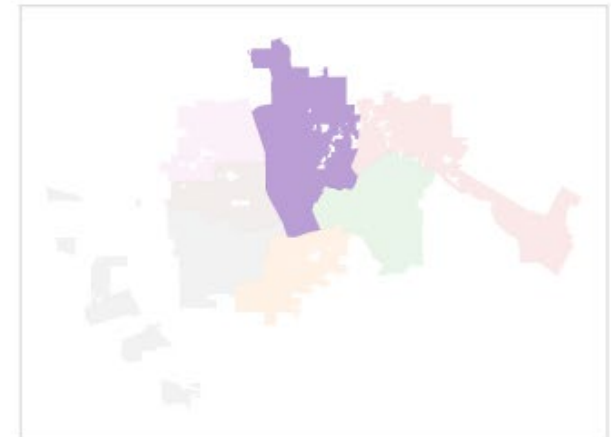
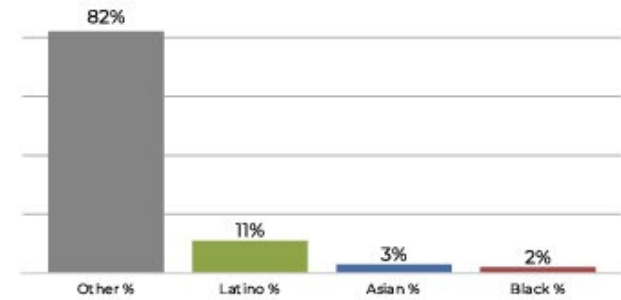
District 4



2020 Census

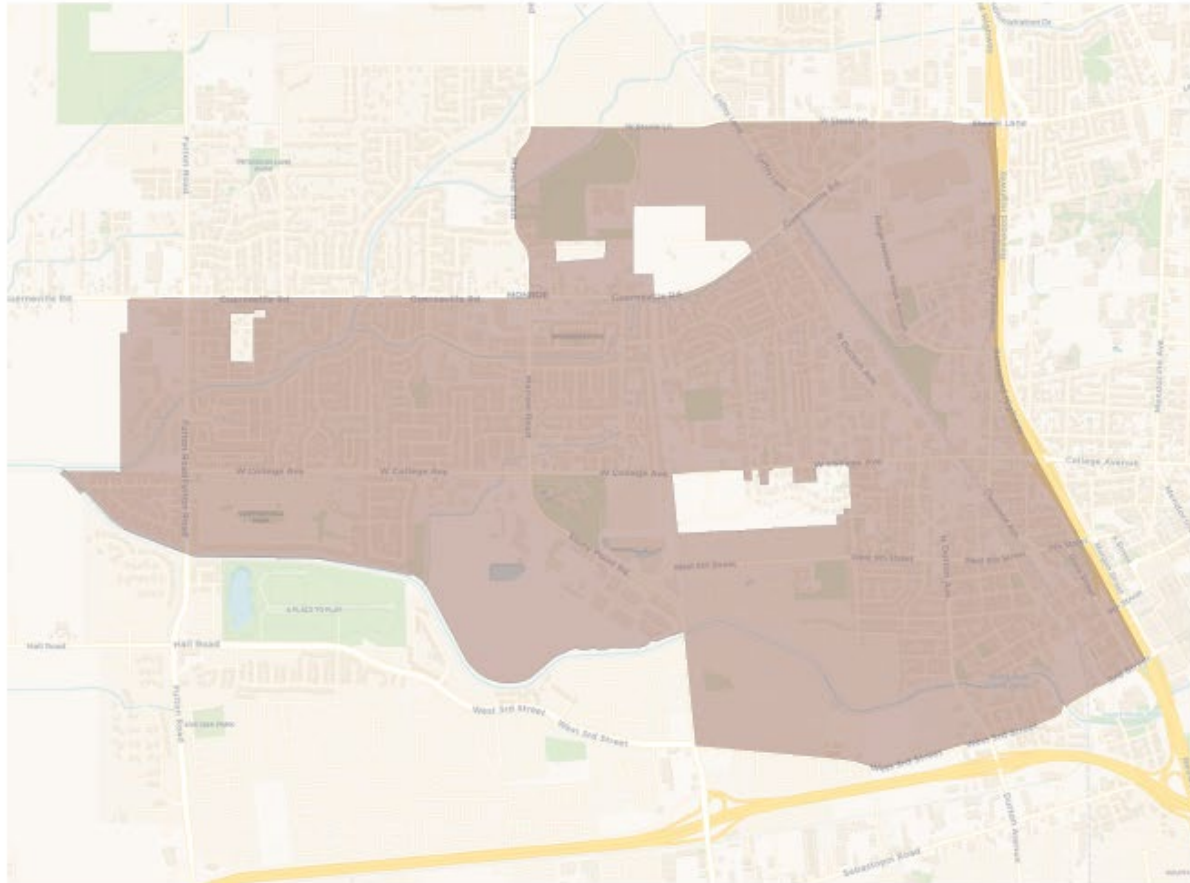


Citizen Voting Age Population

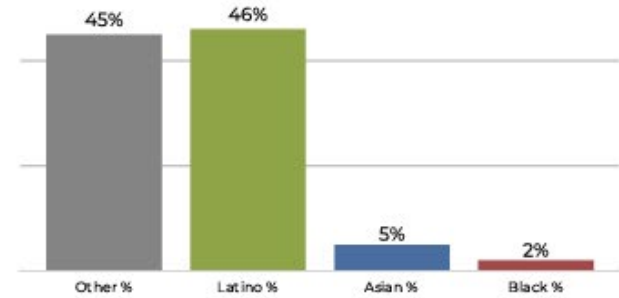


Population	Deviation	Deviation %	Other	Other %	Latino	Latino %	Asian	Asian %	Black	Black %
25,975	473	1.9%	19,188	73.9%	5,079	19.6%	1,219	4.7%	489	1.9%
Total CVAP	Other CVAP	Other CVAP %	Latino CVAP	Latino CVAP %	Asian CVAP	Asian CVAP %	Black CVAP	Black CVAP %		
21,018	17,356	82.6%	2,319	11.0%	830	3.9%	513	2.4%		

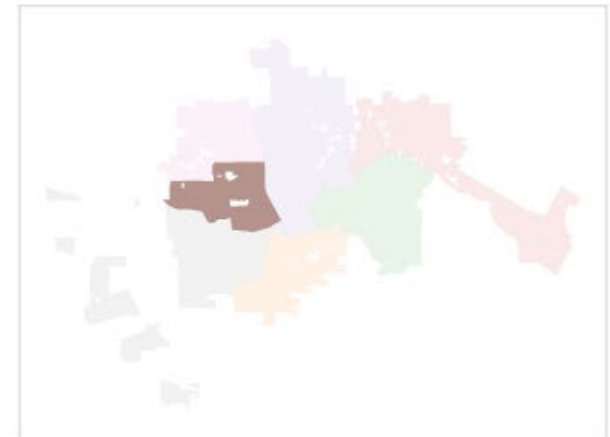
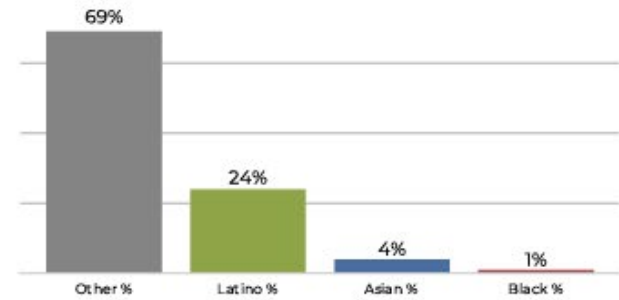
District 5



2020 Census

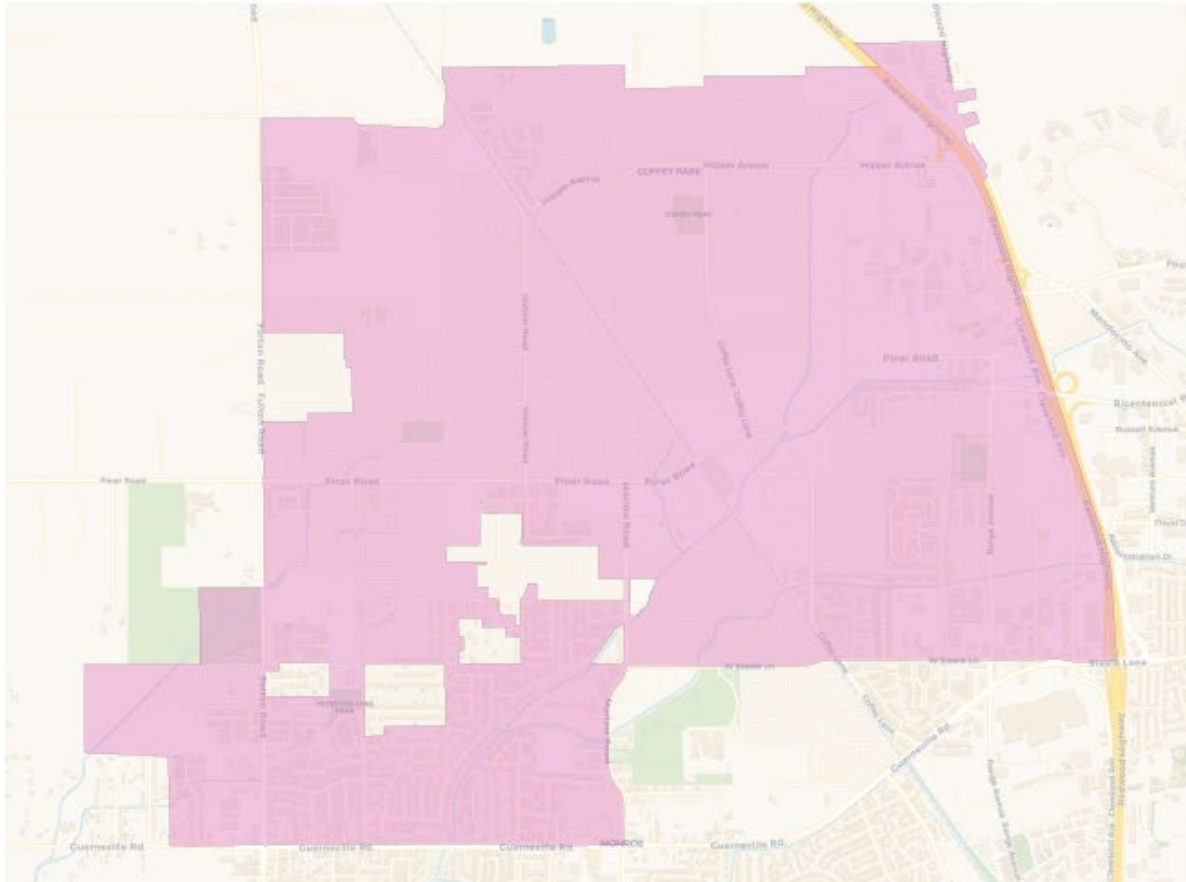


Citizen Voting Age Population

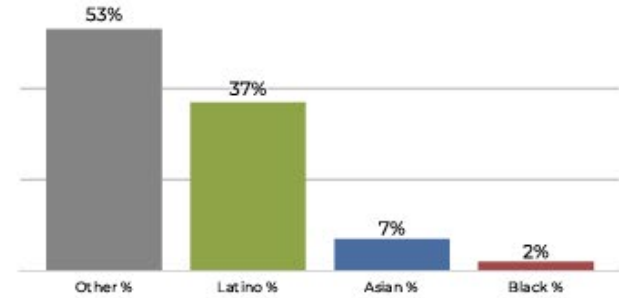


Population	Deviation	Deviation %	Other	Other %	Latino	Latino %	Asian	Asian %	Black	Black %
25,726	224	0.9%	11,695	45.5%	11,928	46.4%	1,392	5.4%	711	2.8%
Total CVAP	Other CVAP	Other CVAP %	Latino CVAP	Latino CVAP %	Asian CVAP	Asian CVAP %	Black CVAP	Black CVAP %		
15,889	11,008	69.3%	3,867	24.3%	771	4.9%	243	1.5%		

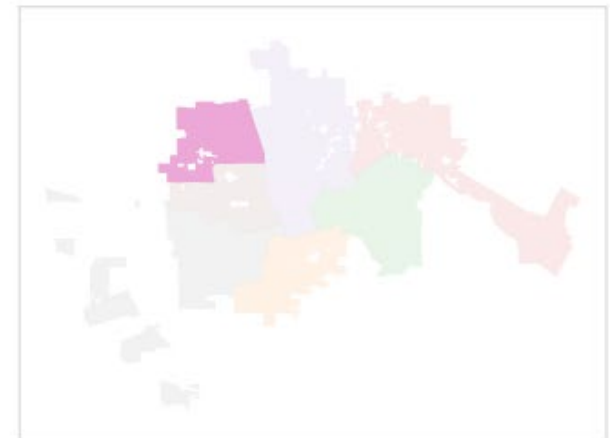
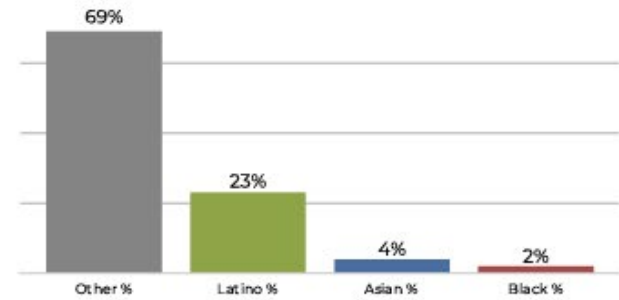
District 6



2020 Census

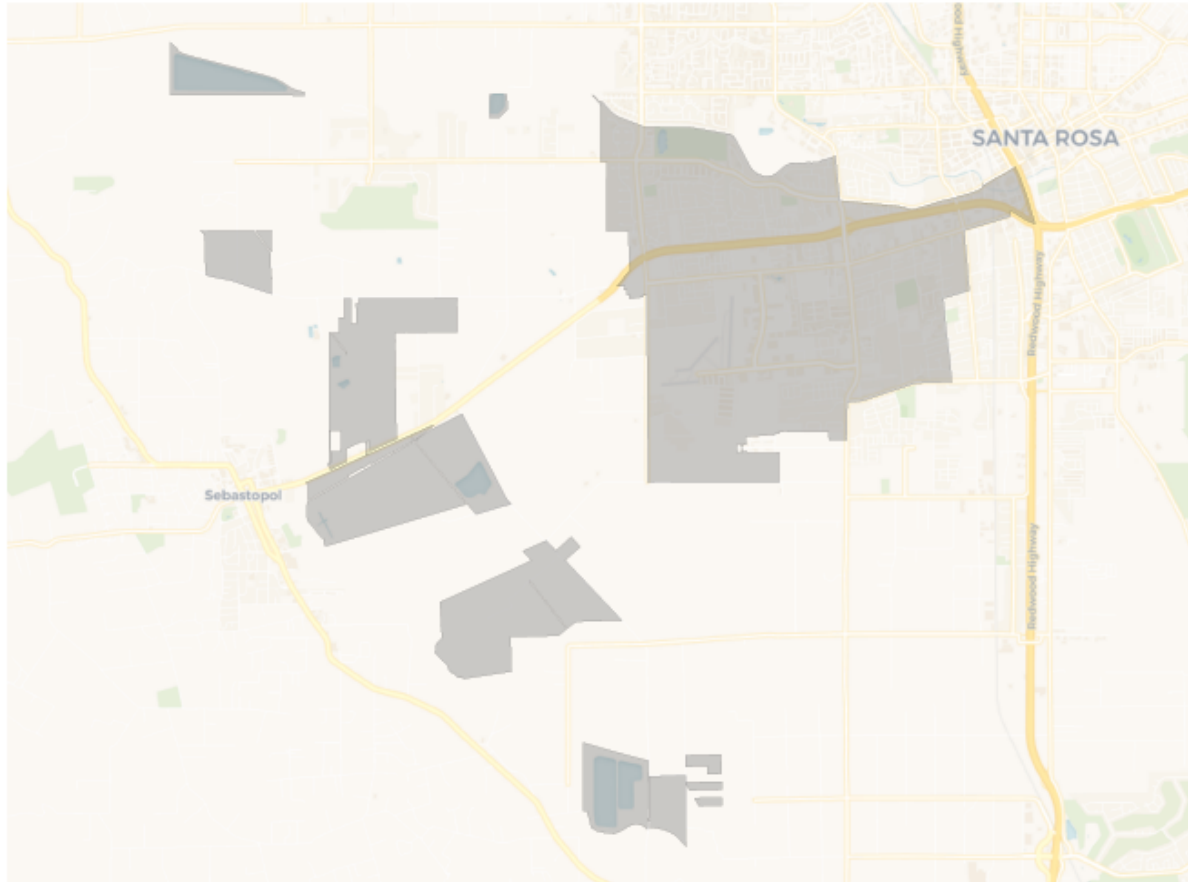


Citizen Voting Age Population

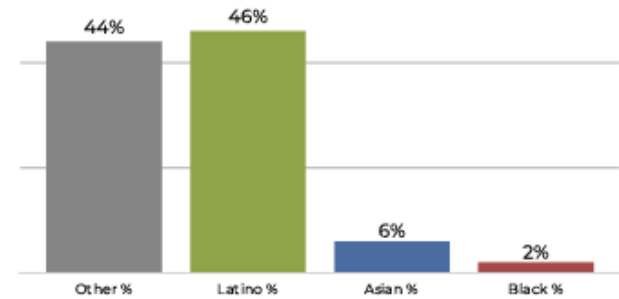


Population	Deviation	Deviation %	Other	Other %	Latino	Latino %	Asian	Asian %	Black	Black %
25,500	-2	-0.0%	13,526	53.0%	9,630	37.8%	1,783	7.0%	561	2.2%
Total CVAP	Other CVAP	Other CVAP %	Latino CVAP	Latino CVAP %	Asian CVAP	Asian CVAP %	Black CVAP	Black CVAP %		
17,081	11,856	69.4%	4,055	23.7%	700	4.1%	470	2.8%		

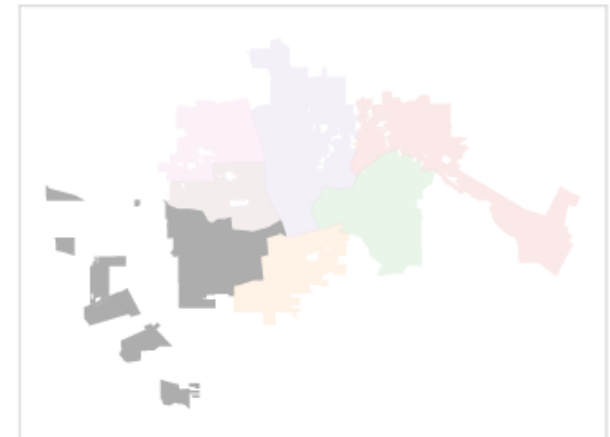
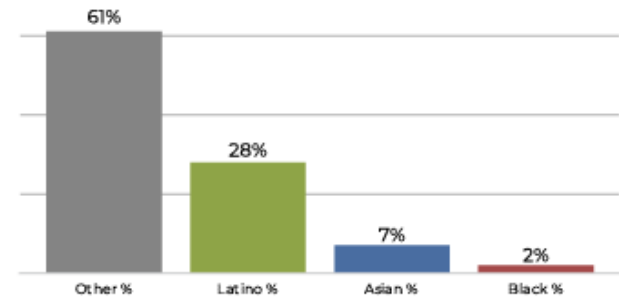
District 7



2020 Census



Citizen Voting Age Population



Population	Deviation	Deviation %	Other	Other %	Latino	Latino %	Asian	Asian %	Black	Black %
25,377	-125	-0.5%	11,287	44.5%	11,670	46.0%	1,710	6.7%	710	2.8%
Total CVAP	Other CVAP	Other CVAP %	Latino CVAP	Latino CVAP %	Asian CVAP	Asian CVAP %	Black CVAP	Black CVAP %		
15,074	9,203	61.1%	4,353	28.9%	1,135	7.5%	383	2.5%		