

Attachment 2 - A

Class II Bike Lane Network Gap Closure (Hopper Avenue) Location Map



Blue highlighted area indicates project location

Attachment 2 - B

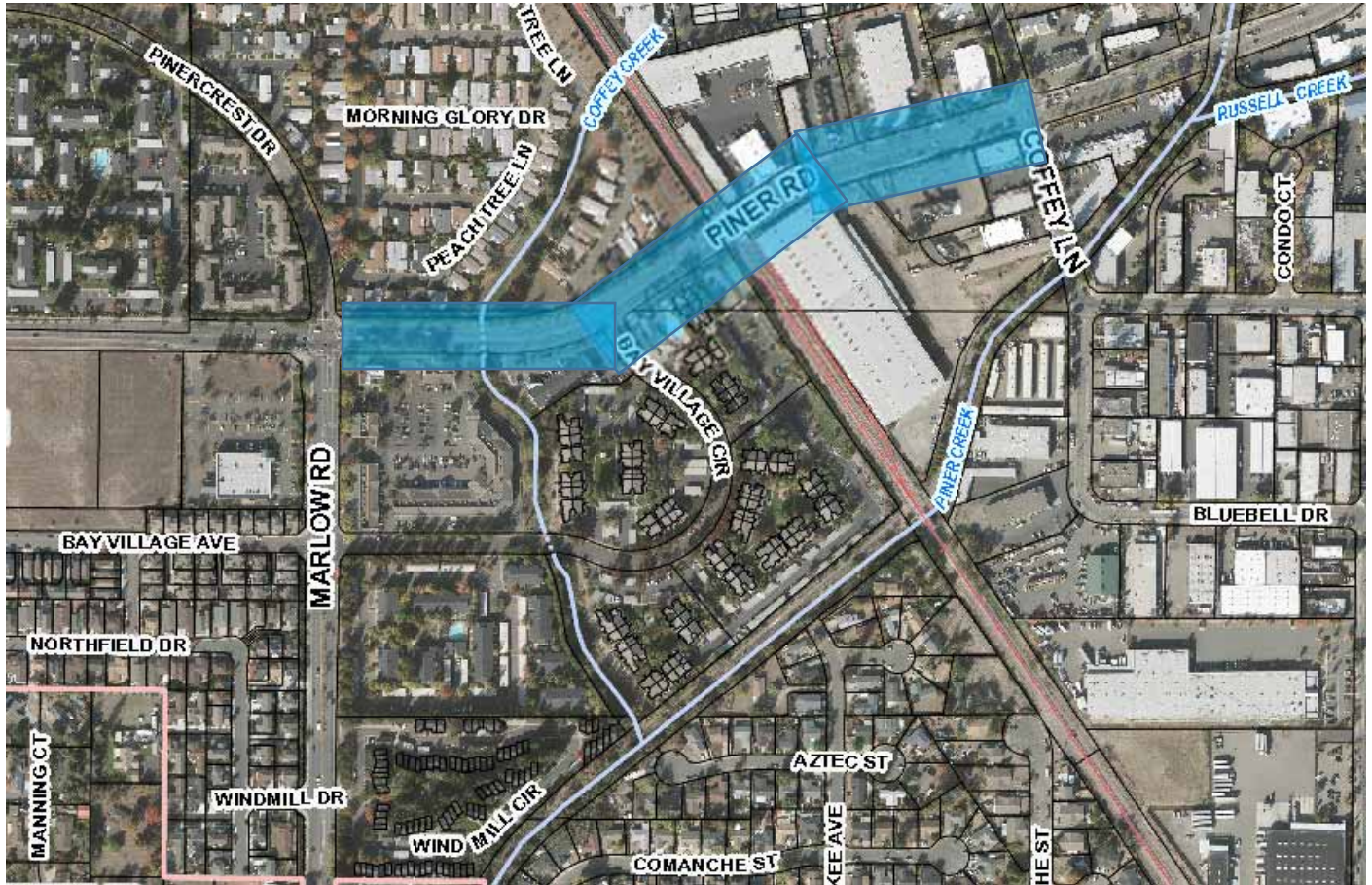
Class II Bike Lane Network Gap Closure (Kawana Springs Road) Location Map



Blue highlighted area indicates project location

Attachment 2 - C

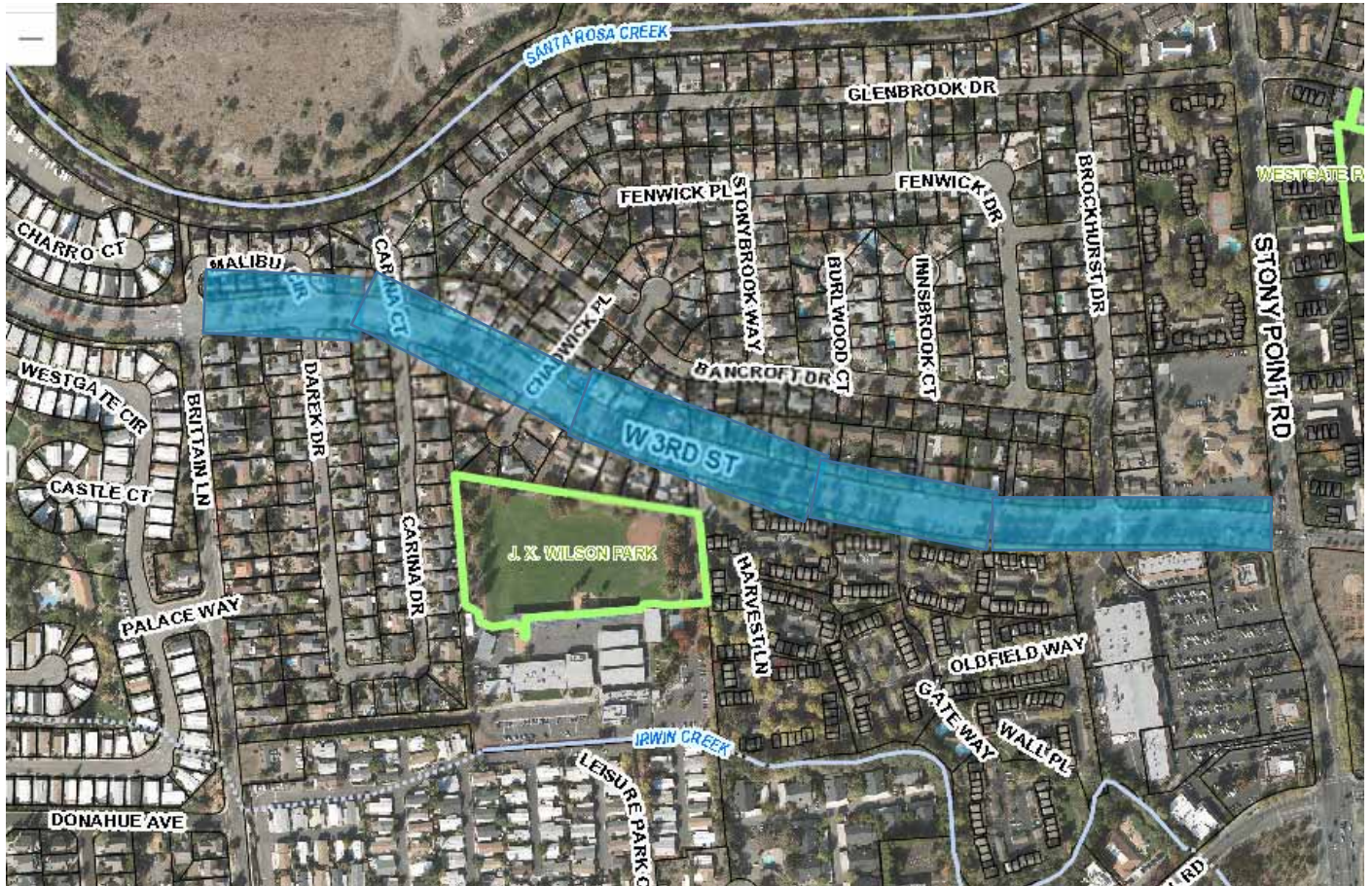
Class II Bike Lane Network Gap Closure (Piner Road) Location Map



Blue highlighted area indicates project location

Attachment 2 - D

Class II Bike Lane Network Gap Closure (W. Third Street) Location Map



Blue highlighted area indicates project location