

FIRMA
DESIGN GROUP
Planners • Civil Engineers • Landscape Architects

www.firmadesigngroup.com
418 B Street, Third Floor
Santa Rosa, California 95401
Telephone • 707.792.1800

Prepared Under the Direction of:



Jerry Joseph Novak
RCE 042706 Exp. 3/31/18

HIGHWAY RETAIL OUTLET - APN 125-162-025
470 SEBASTOPOL RD, SANTA ROSA, CA 95407

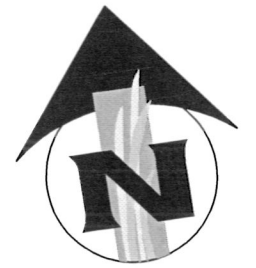
**USE PERMIT
SITE PLAN**

Revision	By	Date	#

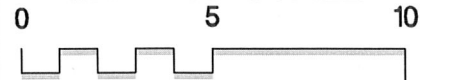
City of Santa Rosa
APR 20 2018
Planning & Economic
Development Department

Designed JHA
Checked MPG
Date 02/27/18
Sheet

C1.0
of 2 Sheets
Job No. 0693-010



GRAPHIC SCALE

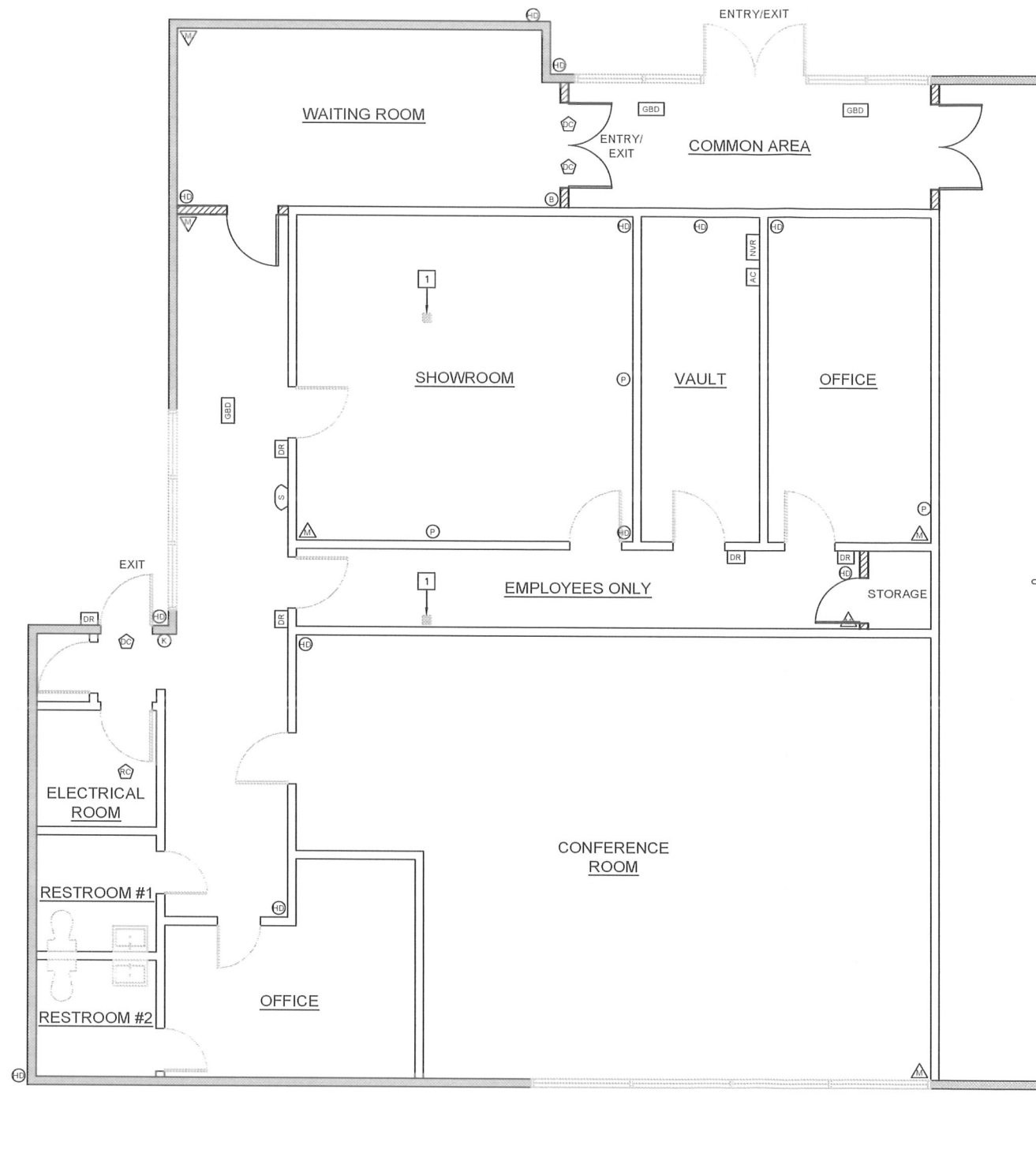


(IN FEET)
1 inch = 5ft

NEIGHBORHOOD CONTEXT MAP

FOR HIGHWAY RETAIL OUTLET (APN 125-162-025)

470 SEBASTOPOL RD - SANTA ROSA, CA 95407



FLOOR PLAN
SCALE: 1/4" = 1'-0"

SHEET NOTES

1 EXISTING 6x6 STEEL COLUMN TO REMAIN.

LEGEND

- GBD GLASS BREAK DETECTOR
- DR DOOR READER
- AC ALARM / ACCESS CONTROL
- NVR NVR / MONITOR
- K KEYPAD
- P PANIC BUTTON
- B BLUE HORNSTROBE
- HD HIGH DEFINITION CAMERA
- DC DOOR CONTACT
- RHC ROOF HATCH CONTACT
- MD MOTION DETECTOR
- S SIREN
- EXISTING EXTERIOR WALL TO REMAIN
- EXISTING INTERIOR WALL TO REMAIN
- NEW INTERIOR WALL



TOM WILSON ARCHITECT, INC
920 First Street, Suite 202
Benicia, CA 94510
Tel: (707) 747-1231
www.tw-architects.com

JUSTIN MIRANDA
470 SEBASTOPOL ROAD
SANTA ROSA, CA 94947

DATE: 03-27-2018

REV. NO.	REV. DATE
▲	
▲	
▲	
▲	

FLOOR PLAN

X-03

JOB NO.: JM002

COPYRIGHT NOTICE: USE OF THESE DRAWINGS AND SPECIFICATIONS IS RESTRICTED TO THE ORIGINAL PROJECT SET FOR WHICH THEY WERE INTENDED. REUSE OR REPRODUCTION BY ANY METHOD, IN WHOLE OR IN PART, IS PROHIBITED. TITLE TO DRAWINGS AND SPECIFICATIONS INCLUDING ALL RIGHTS, RESERVES AND INFORMATION REMAINS WITH THE ARCHITECT. ARCHITECT, INC. VISUAL CONTACT WITH THESE DRAWINGS AND SPECIFICATIONS CONSTITUTES THE FACE EVIDENCE OF THE ACCEPTANCE OF THESE INSTRUMENTS.