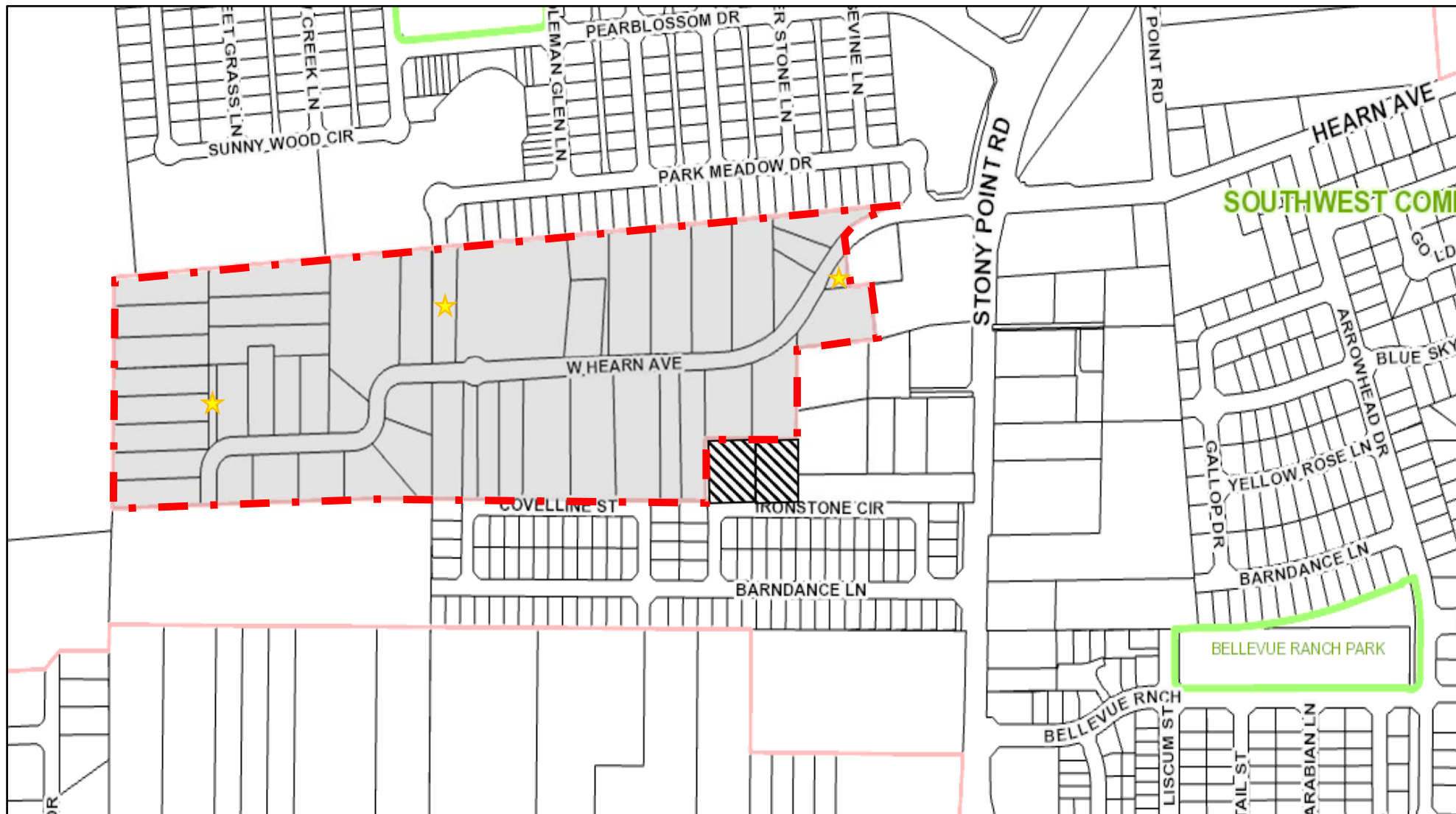


**ROSELAND AREA REZONING, PREZONING AND GENERAL PLAN LAND USE CLERICAL CORRECTIONS**



**LEGEND**



West Hearn Avenue County Island – RR-20-RH Prezone



2046 and 2048 West Hearn Avenue – RR-20-RH Rezone



2028, 2279 and unaddressed W. Hearn Avenue – Very Low Density Residential Land Use