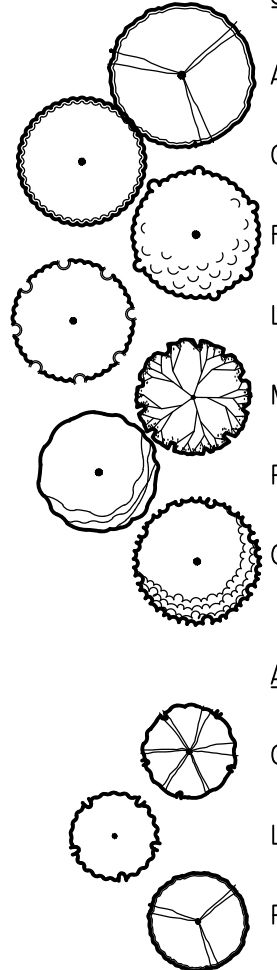


**PRELIMINARY TREE PALETTE**

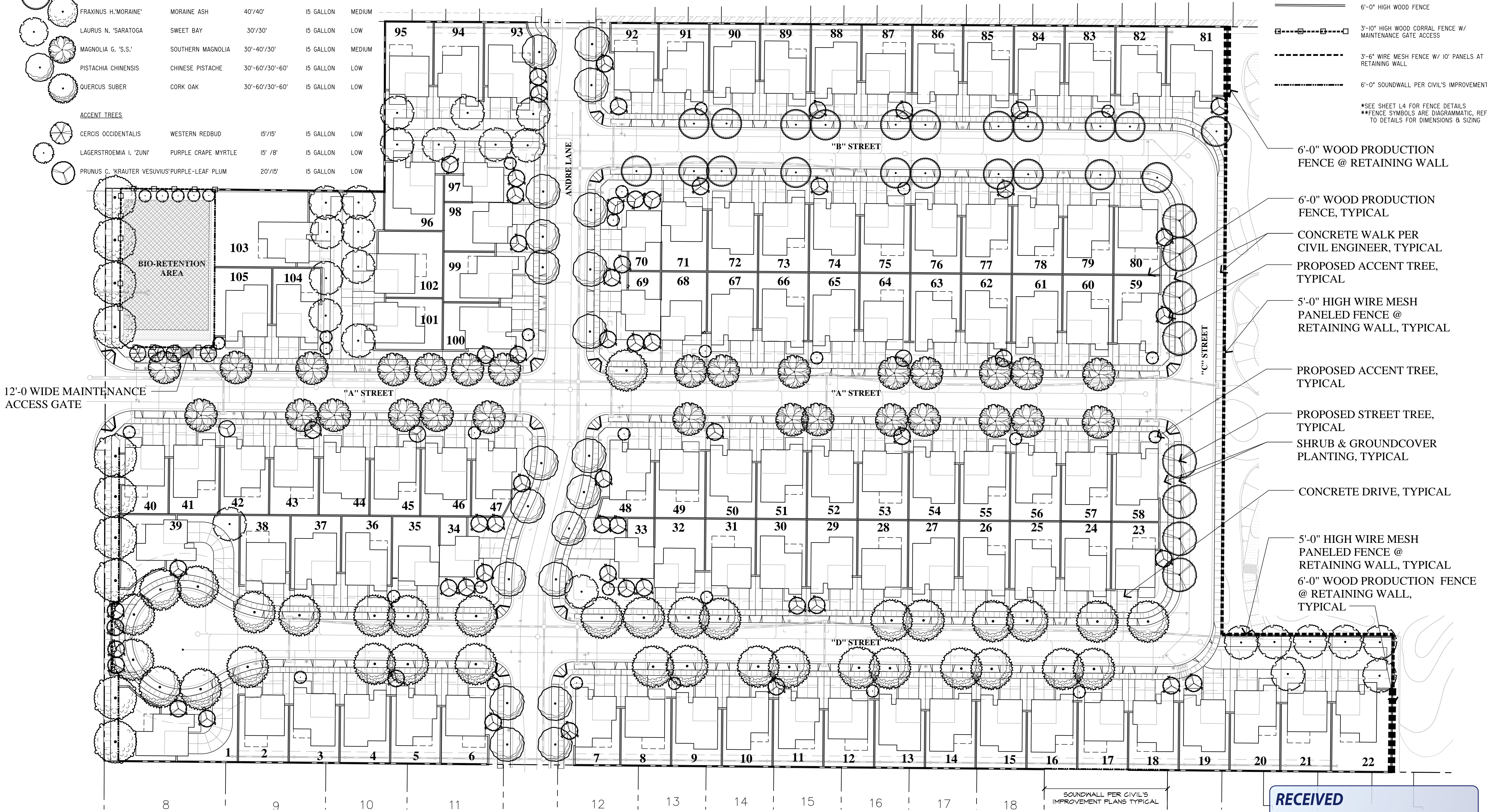
BOTANICAL NAME	COMMON NAME	HEIGHT / SPREAD	SIZE	WATER USE
<b>STREET TREES</b>				
ACER F. 'A.B.'	AUTUMN BLAZE MAPLE	50'/40"	15 GALLON	MEDIUM
CELTIS AUSTRALIS	EUROPEAN HACKBERRY	40'/30'	15 GALLON	MEDIUM
FRAXINUS H. 'MORAIN'	MORAIN' ASH	40'/40'	15 GALLON	MEDIUM
LAURUS N. 'SARATOGA'	SWEET BAY	30'/30'	15 GALLON	LOW
MAGNOLIA G. 'S.S.'	SOUTHERN MAGNOLIA	30'-40'/30'	15 GALLON	MEDIUM
PISTACHIA CHINENSIS	CHINESE PISTACHE	30'-60'/30'-60'	15 GALLON	LOW
QUERCUS SUBER	CORK OAK	30'-60'/30'-60'	15 GALLON	LOW
<b>ACCENT TREES</b>				
CERCIS OCCIDENTALIS	WESTERN REDBUD	15'/15'	15 GALLON	LOW
LAGERSTROEMIA I. 'ZUNI'	PURPLE CRAPE MYRTLE	15' / 8'	15 GALLON	LOW
PRUNUS C. 'KRAUTER VESUVIUS/PURPLE-LEAF PLUM'		20'/15'	15 GALLON	LOW



**FENCE LEGEND**

SYMBOL	FENCE TYPE
█	6'-0" HIGH WOOD FENCE AT RETAINING WALL
—	6'-0" HIGH WOOD FENCE
□	3'-10" HIGH WOOD CORRAL FENCE W/ MAINTENANCE GATE ACCESS
- - -	3'-6" WIRE MESH FENCE W/ 10' PANELS AT RETAINING WALL
---	6'-0" SOUNDWALL PER CIVIL'S IMPROVEMENT PLANS

\*SEE SHEET L4 FOR FENCE DETAILS  
\*\*FENCE SYMBOLS ARE DIAGRAMMATIC, REFER TO DETAILS FOR DIMENSIONS & SIZING



**RECEIVED**  
By Andrew Trippel at 12:08 pm, Oct 14, 2020

**STONEBRIDGE**  
2220 FULTON ROAD  
SANTA ROSA, CA

843 Second Street  
Santa Rosa, CA 95404  
**J. Kopolchok + Associates**  
Land Use Planning  
Urban Design

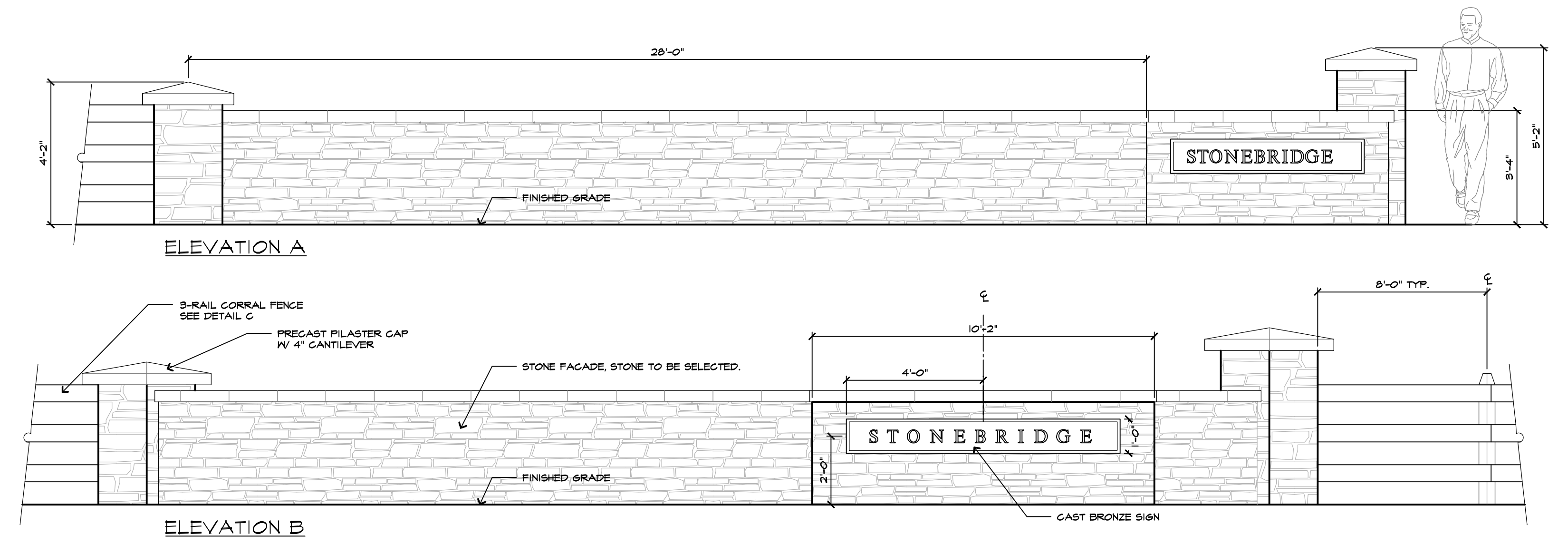
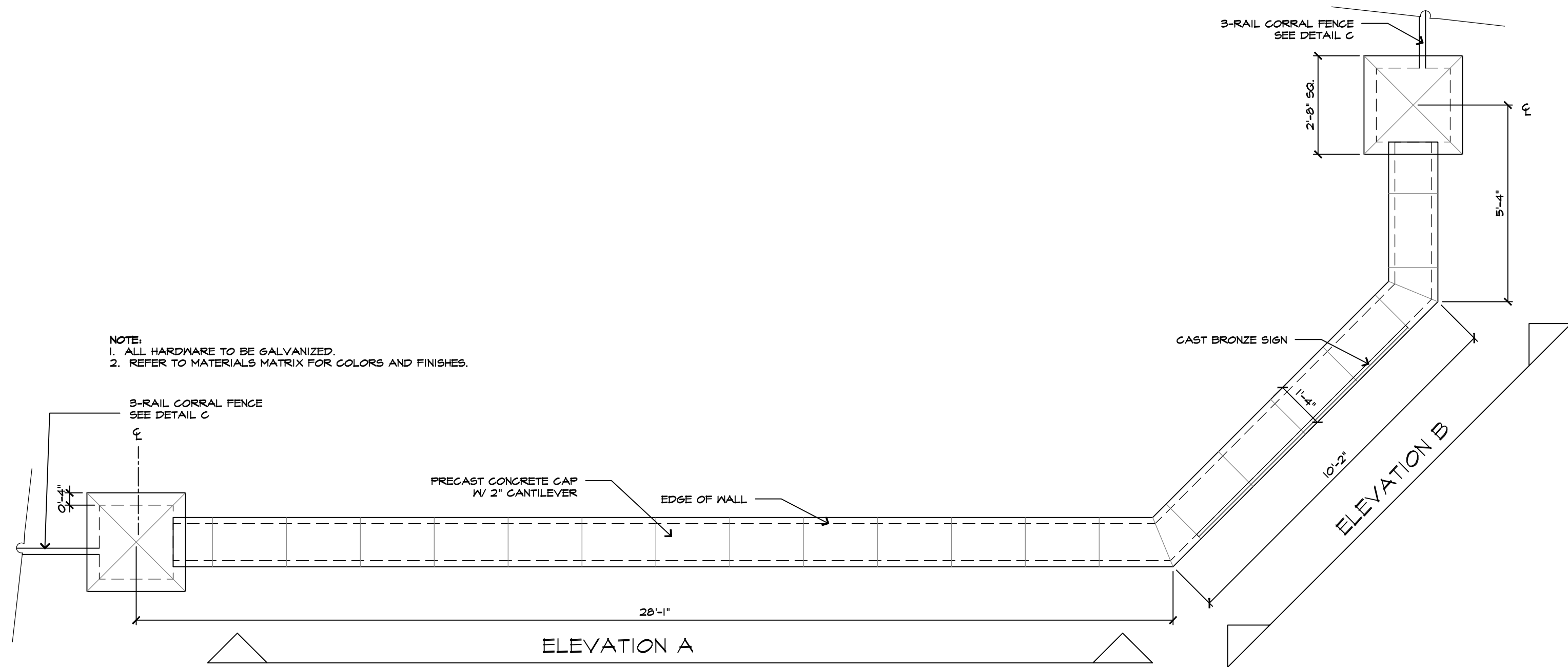
**CIVIL DESIGN CONSULTANTS, INC.**  
2200 Range Avenue, Suite 204  
Santa Rosa, CA 95403  
(707) 542-4820

Architecture | Planning | Interiors  
444 Spear Street, Suite 105  
San Francisco, CA 94105  
www.hunthalejones.com  
t. 415-512-1300  
f. 415-288-0288

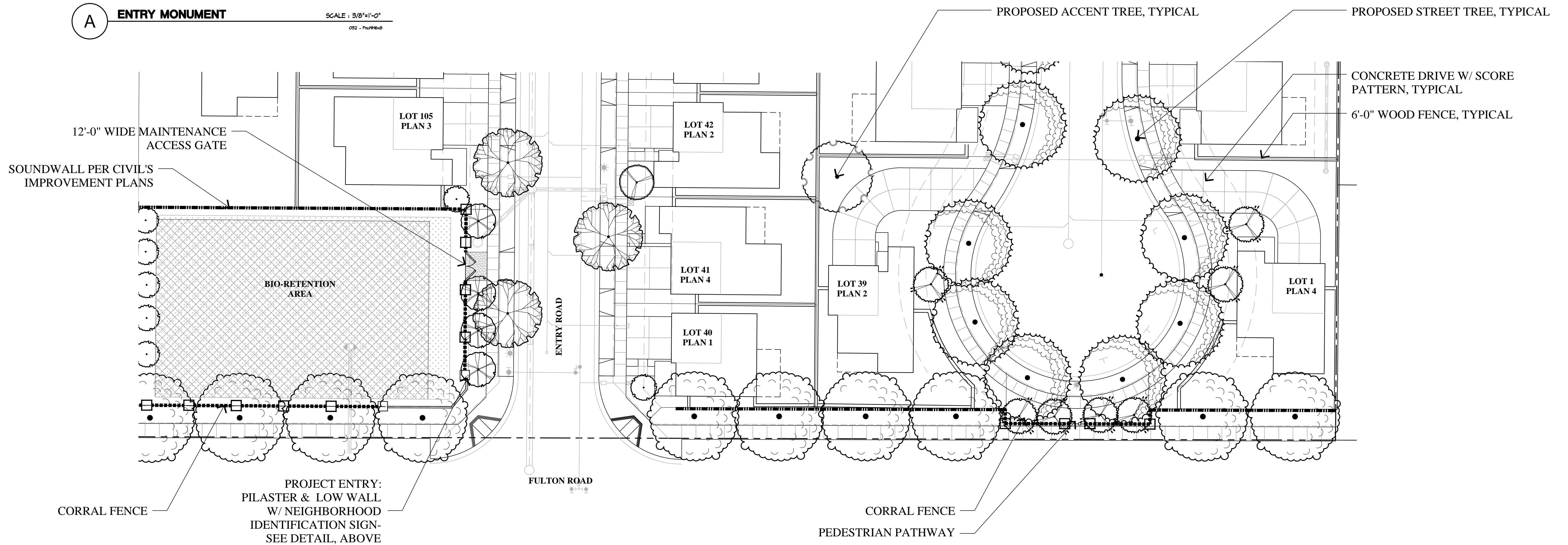
**PRELIMINARY SITE PLAN**

GRAPHIC SCALE  
0 40 80 120  
( IN FEET )  
1 inch = 40 ft.

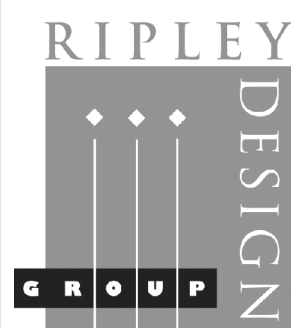
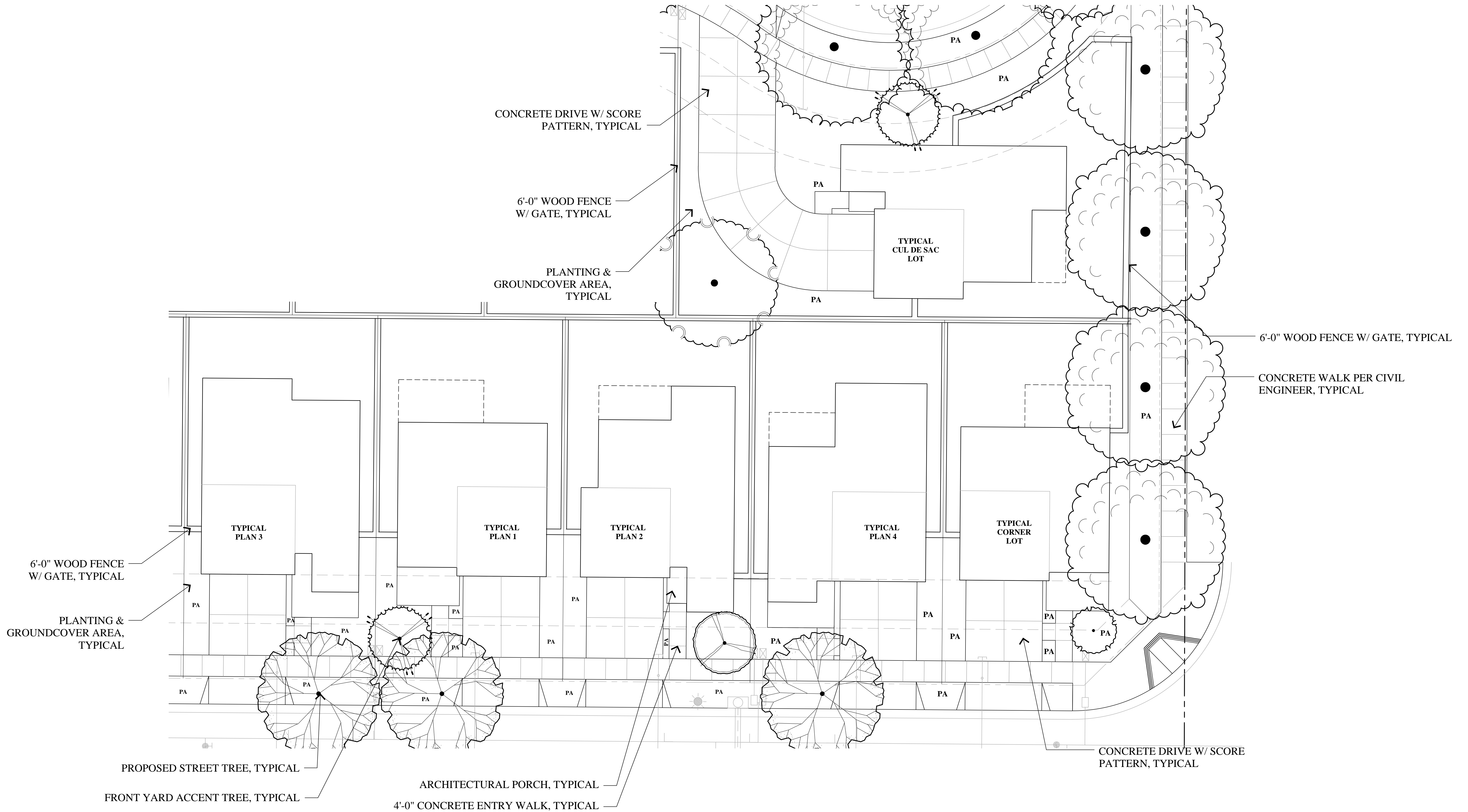
SCALE: 1"=40'  
DATE: 10.9.2020  
PROJECT: 352001.00



**A ENTRY MONUMENT** SCALE: 3/8"=1'-0"  
052 - Plan 000

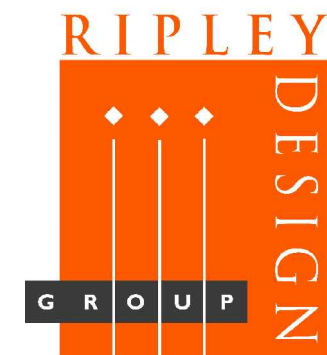


	<h1>STONEBRIDGE</h1> <p>2220 FULTON ROAD SANTA ROSA, CA</p>	<p>843 Second Street Santa Rosa, CA 95404</p> <p><b>J. Kapolchok</b> + Associates Land Use Planning Urban Design</p>		<p><b>CIVIL DESIGN CONSULTANTS, INC.</b> 2200 Range Avenue, Suite 204 Santa Rosa, CA 95403 (707) 542-4820</p>		<p><b>HUNT HALE JONES</b></p>	<p>Architecture   Planning   Interiors</p> <p>444 Spear Street, Suite 105 San Francisco, CA 94105 www.hunthalejones.com</p> <p>t. 415-512-1300 f. 415-288-0288</p>	<p>GRAPHIC SCALE ( IN FEET ) 1 inch = 20 ft.</p>	<p><b>ENTRY ENLAREMENT</b></p> <p>L2</p> <p>SCALE: 1"=20' DATE: 10.9.2020 PROJECT: 352001.00</p>
--	---	--	--	---	--	---------------------------------------	--	--	--

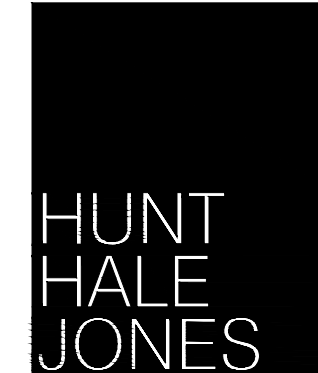


**STONEBRIDGE**  
 2220 FULTON ROAD  
 SANTA ROSA, CA

843 Second Street  
 Santa Rosa, CA 95404  
**J. Kapolchok**  
 + Associates  
 Land Use Planning  
 Urban Design



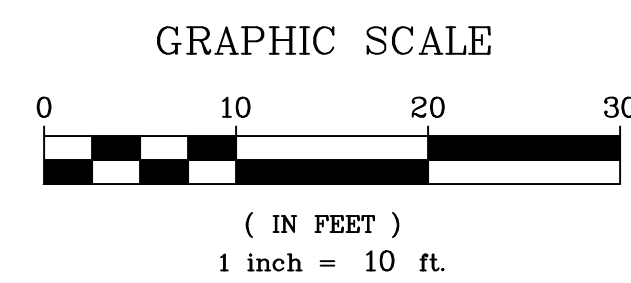
**CIVIL DESIGN CONSULTANTS, INC.**  
 2200 Range Avenue, Suite 204  
 Santa Rosa, CA 95403  
 (707) 542-4820



Architecture | Planning | Interiors

444 Spear Street, Suite 105  
 San Francisco, CA 94105  
 www.hunthalejones.com

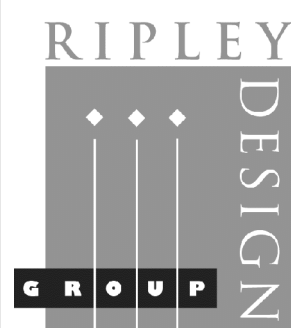
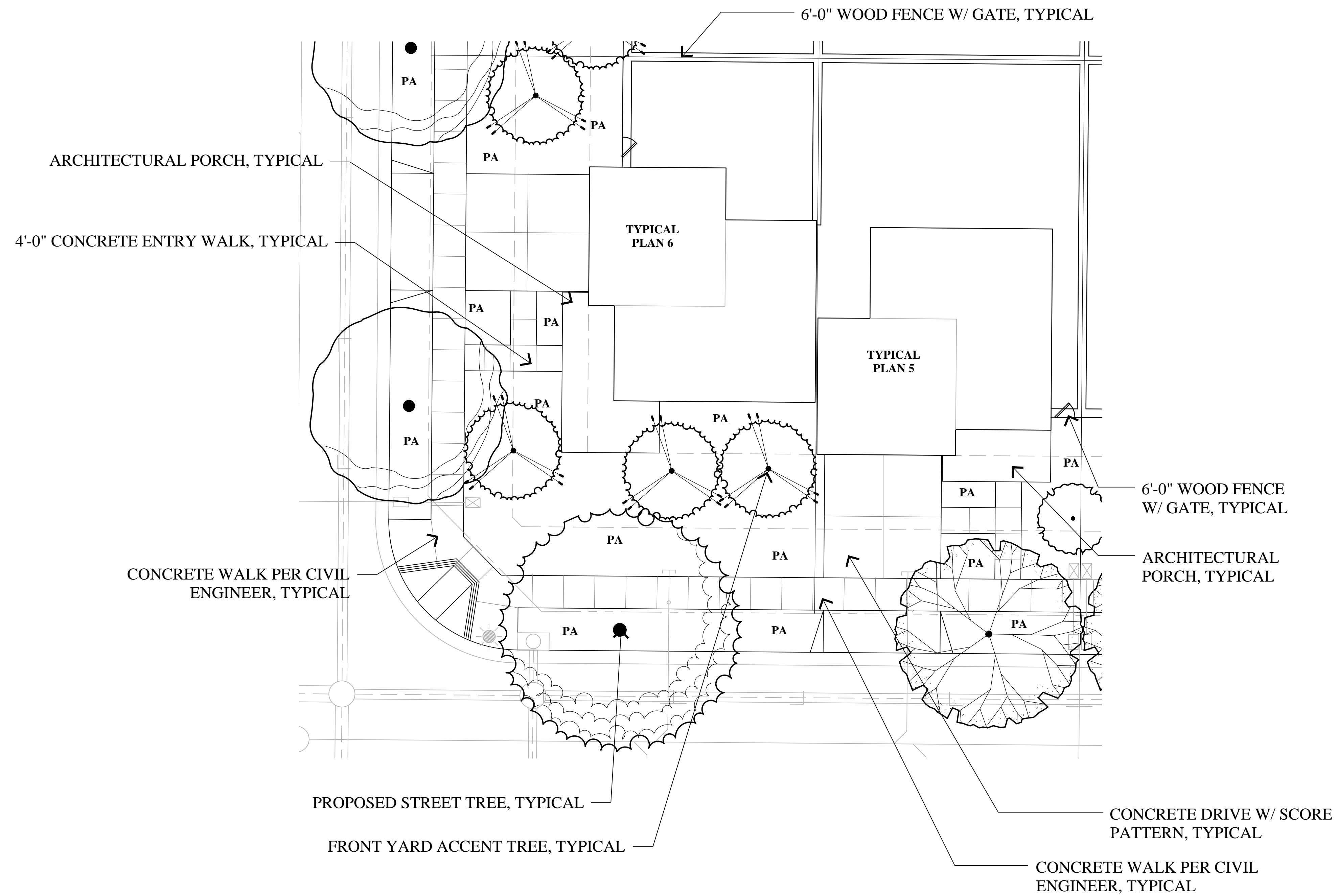
t. 415-512-1300  
 f. 415-288-0288



FRONT YARD TYPICALS

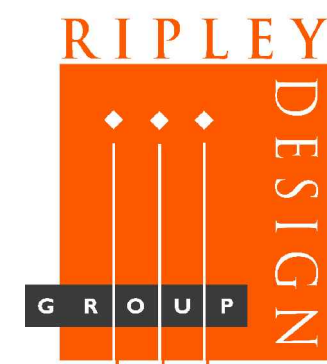
L3

SCALE: 1"=10'  
 DATE: 10.9.2020  
 PROJECT: 352001.00



**STONEBRIDGE**  
 2220 FULTON ROAD  
 SANTA ROSA, CA

843 Second Street  
 Santa Rosa, CA 95404  
**J. Kapolchok**  
 + Associates  
 Land Use Planning  
 Urban Design



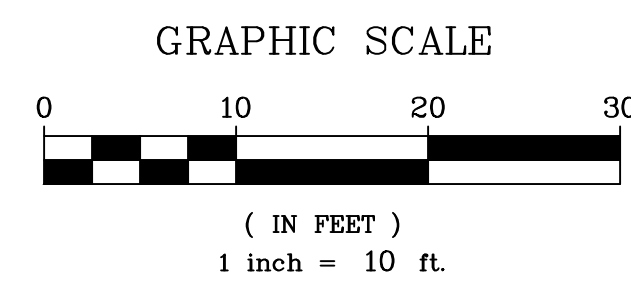
**CIVIL DESIGN CONSULTANTS, INC.**  
 2200 Range Avenue, Suite 204  
 Santa Rosa, CA 95403  
 (707) 542-4820



Architecture | Planning | Interiors

444 Spear Street, Suite 105  
 San Francisco, CA 94105  
 www.hunthalejones.com

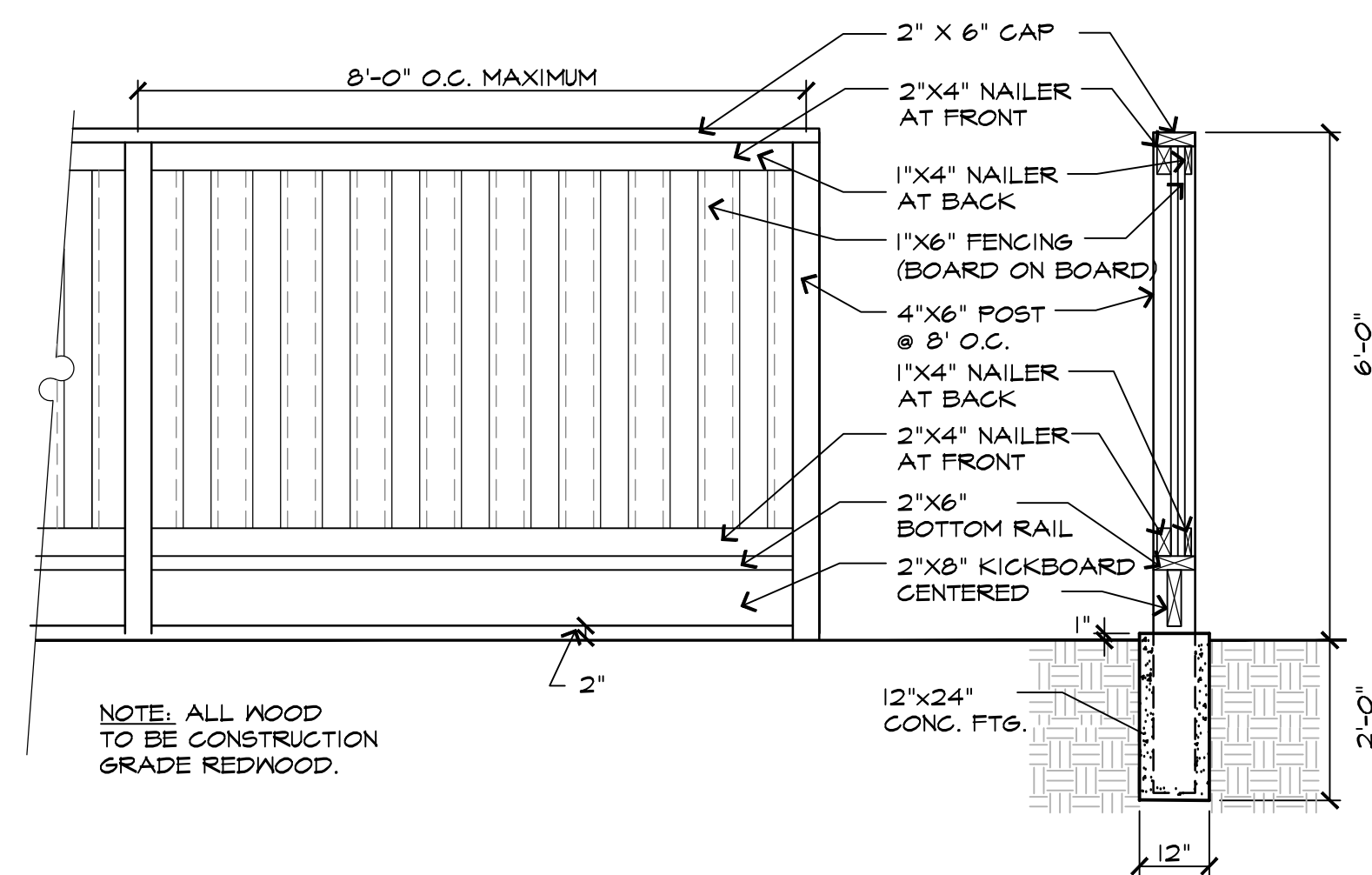
t. 415-512-1300  
 f. 415-288-0288



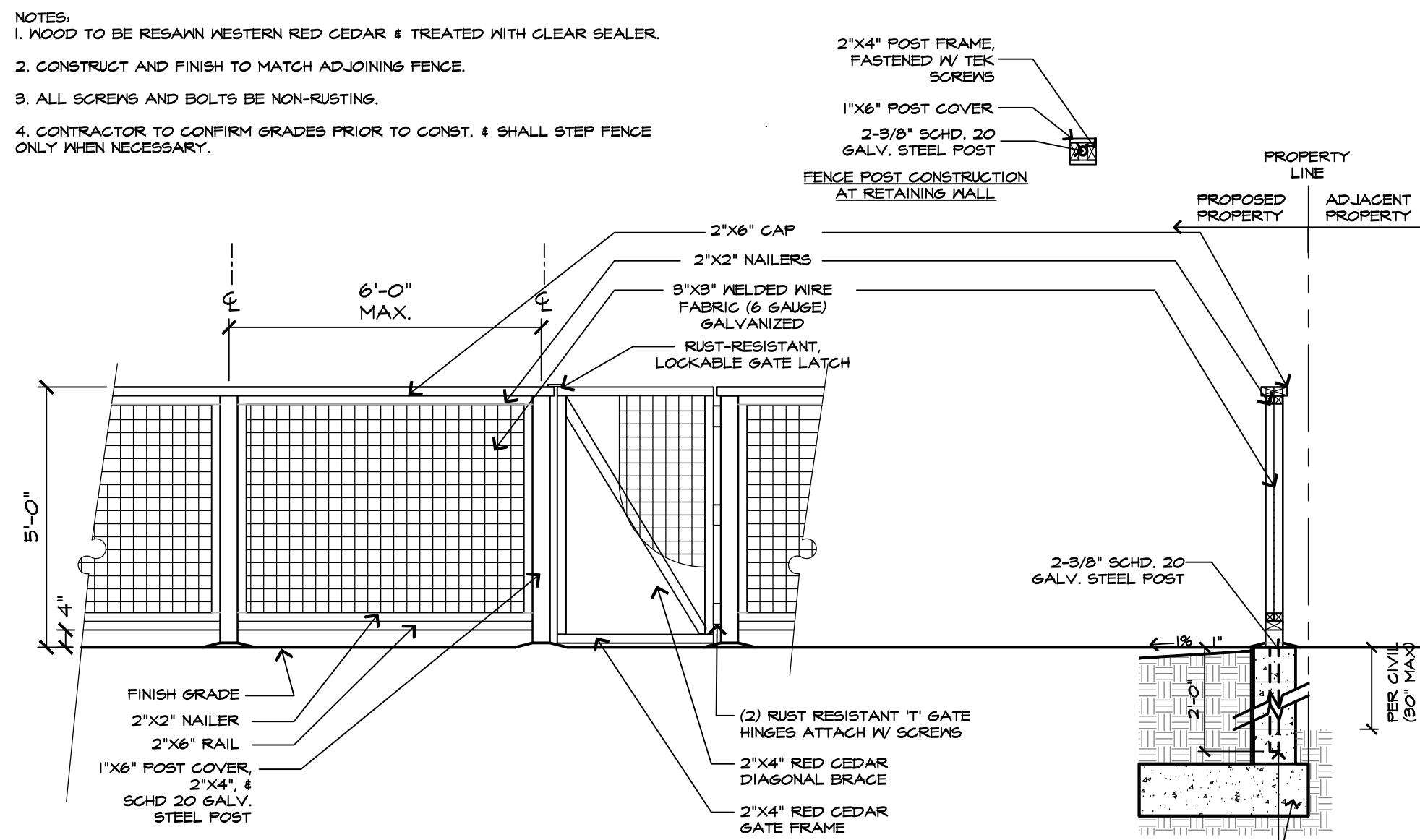
FRONT YARD TYPICALS

L3.1

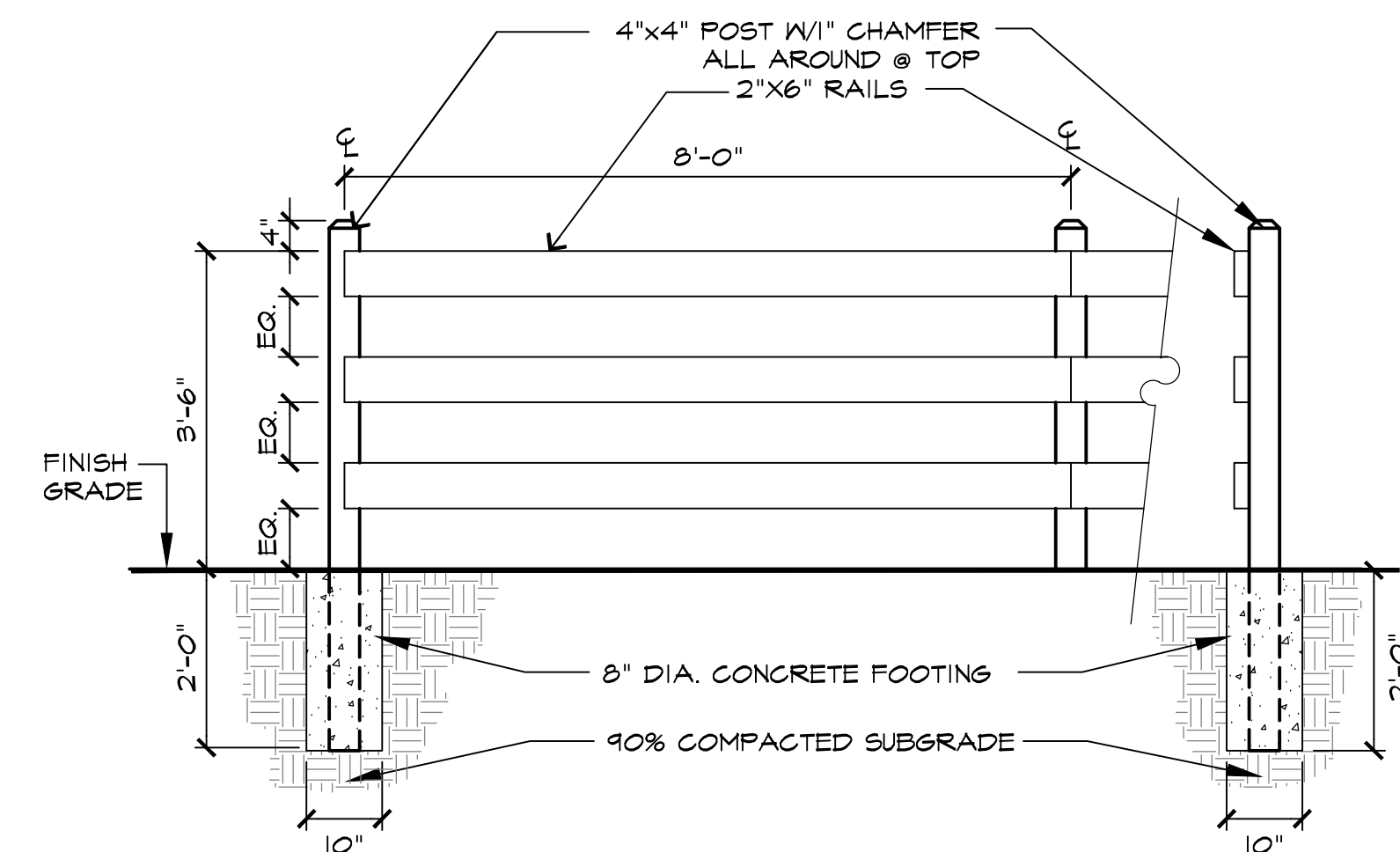
SCALE: 1"=10'  
 DATE: 10.9.2020  
 PROJECT: 352001.00



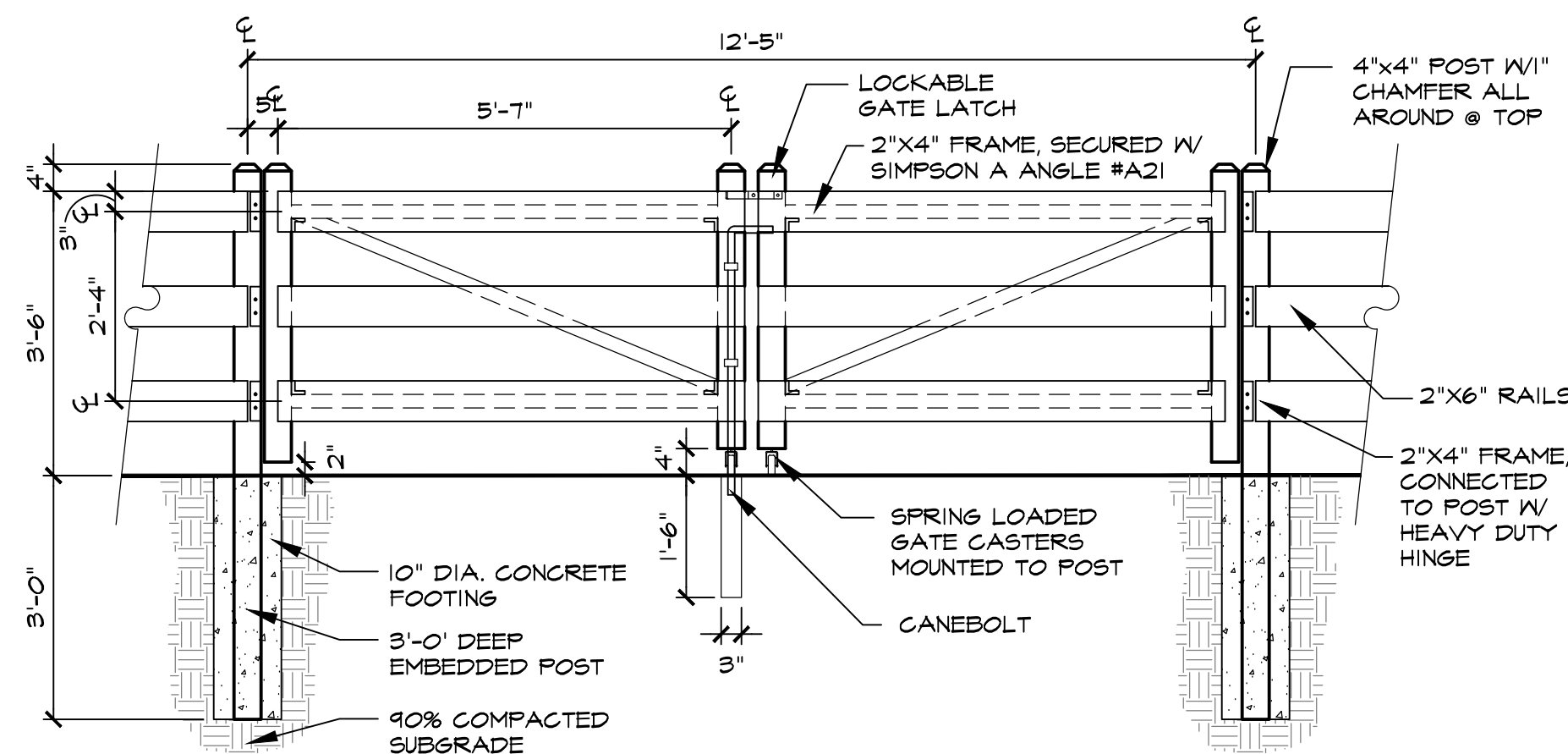
**A WOOD FENCE W/KICKBOARD** SCALE: 1/2" = 1'-0"  
024 - Trifer



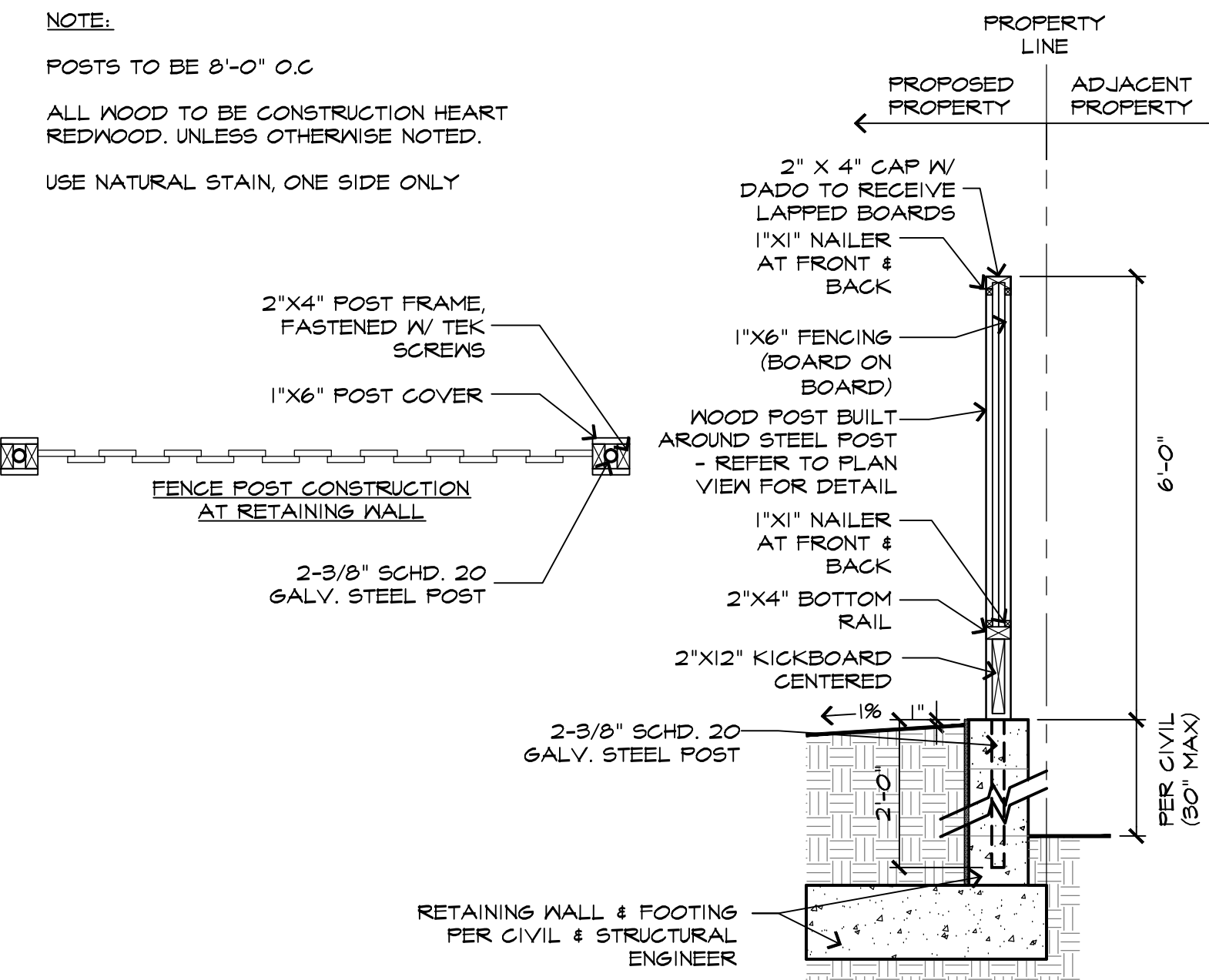
**B 5'-0" WIRE MESH FENCE** SCALE: 3/8" = 1'-0"  
022 - FourWeb



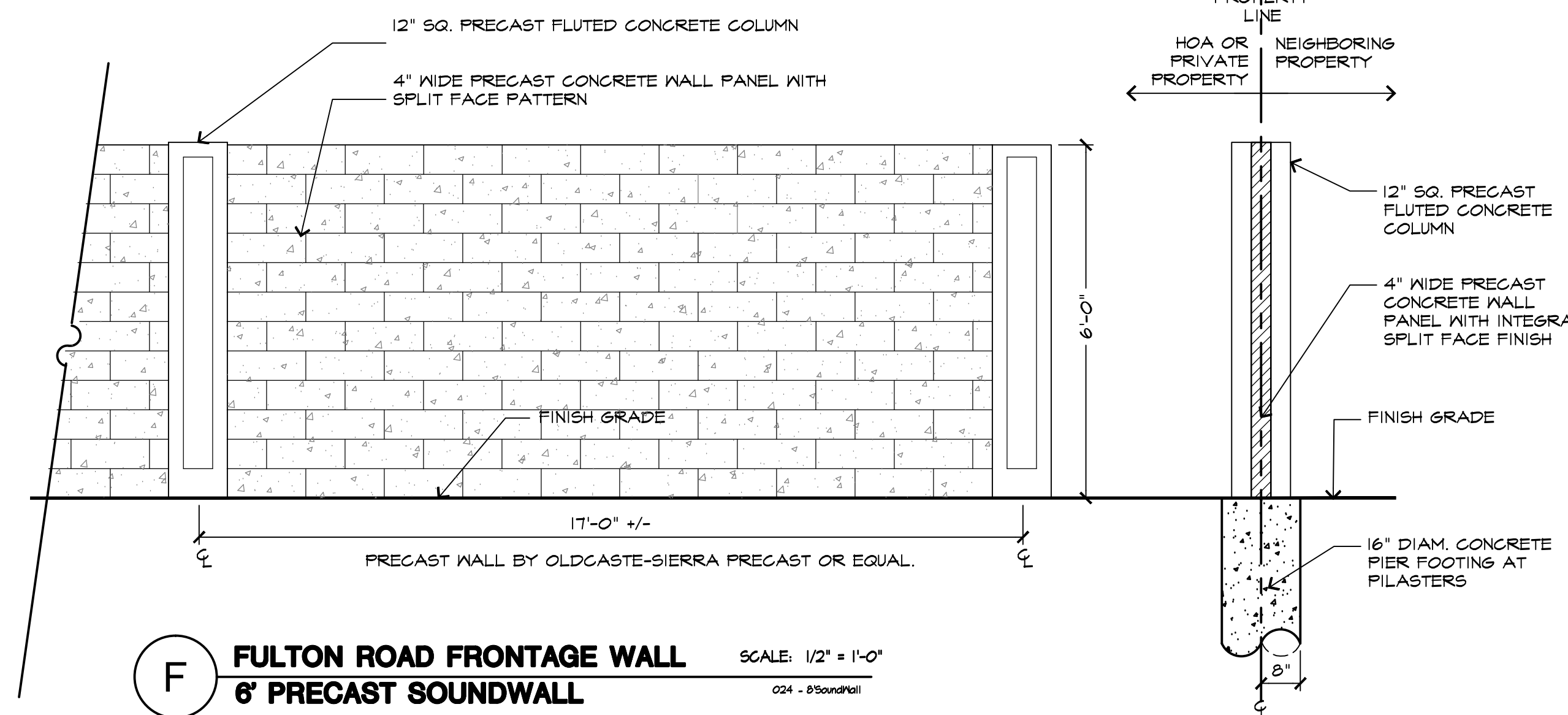
**C CORRAL FENCE** SCALE: 1/2" = 1'-0"  
024 -



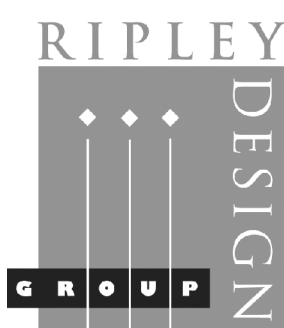
**D MAINTENANCE ACCESS GATE** SCALE: 1/2" = 1'-0"  
**o CORRAL FENCE** 024 -



**E 6'-0" WOOD FENCE ON RETAINING WALL** SCALE: 1/2" = 1'-0"  
024 - Trifer

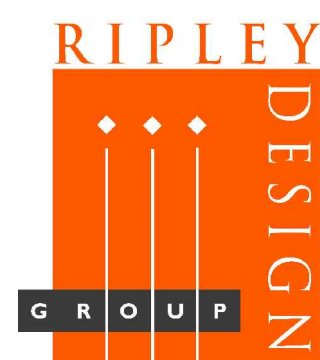


**F FULTON ROAD FRONTAGE WALL** SCALE: 1/2" = 1'-0"  
**6' PRECAST SOUNDWALL** 024 - B5andRill



**STONEBRIDGE**  
2220 FULTON ROAD  
SANTA ROSA, CA

843 Second Street  
Santa Rosa, CA 95404  
**J. Kapolchok**  
+ Associates  
Land Use Planning  
Urban Design



**CIVIL DESIGN CONSULTANTS, INC.**  
2200 Range Avenue, Suite 204  
Santa Rosa, CA 95403  
(707) 542-4820



**HUNT  
HALE  
JONES**

Architecture | Planning | Interiors

444 Spear Street, Suite 105  
San Francisco, CA 94105  
www.hunthalejones.com

t. 415-512-1300  
f. 415-288-0288

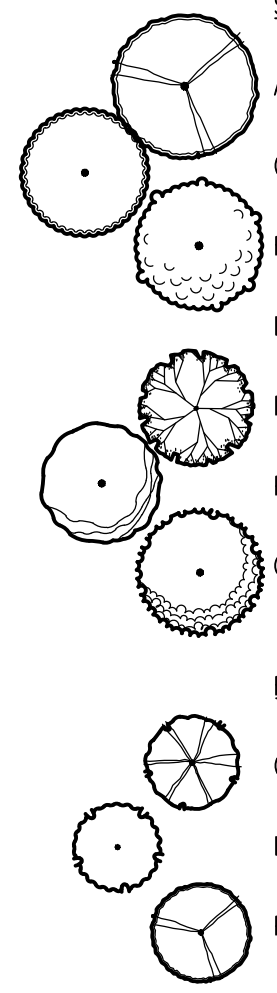
PRELIMINARY SITE DETAILS

L4

SCALE: NTS  
DATE: 10.9.2020  
PROJECT: 352001.00

**PRELIMINARY TREE PALETTE**

BOTANICAL NAME	COMMON NAME	HEIGHT / SPREAD	SIZE	WATER USE
<b>STREET TREES</b>				
ACER F. 'A.B.'	AUTUMN BLAZE MAPLE	50'/40"	15 GALLON	MEDIUM
CELTIS AUSTRALIS	EUROPEAN HACKBERRY	40'/30"	15 GALLON	MEDIUM
FRAXINUS H.'MORAINE'	MORAINES ASH	40'/40"	15 GALLON	MEDIUM
LAURUS N. 'SARATOGA'	SWEET BAY	30'/30"	15 GALLON	LOW
MAGNOLIA G. 'S.S.'	SOUTHERN MAGNOLIA	30'-40'/30"	15 GALLON	MEDIUM
PISTACHIA CHINENSIS	CHINESE PISTACHE	30'-60'/30'-60"	15 GALLON	LOW
QUERCUS SUBER	CORK OAK	30'-60'/30'-60"	15 GALLON	LOW
<b>FRONT YARD ACCENT TREES</b>				
CERCIS OCCIDENTALIS	WESTERN REDBUD	15'/15'	15 GALLON	LOW
LAGERSTROEMIA L. 'ZUNI'	PURPLE CRAPE MYRTLE	15' / 8'	15 GALLON	LOW
PRUNUS C. 'KRAUTER VESUVIUS'	PURPLE-LEAF PLUM	20'/15'	15 GALLON	LOW



**PRELIMINARY PLANT LEGEND**

WATER USE	BOTANICAL NAME	COMMON NAME	WATER USE	SYMBOL	BOTANICAL NAME	COMMON NAME	WATER USE
<b>SHRUBS</b>							
LOW	ANIGONANTHOS 'BUSH PEARL'	DWARF PINK KANGAROO PAW	LOW	LIG 'TEX'	LIGUSTRUM J. 'TEXANUM'	JAPANESE PRIVET	MEDIUM
LOW	ARCTOSTAPHYLOS 'HOWARD MCMINN'	COMPACT STRAWBERRY TREE	LOW	LIM 'PER'	LIMONIUM 'PEREZI'	SEA LAVENDER	LOW
LOW	BERBERIS 'CRIMSON PYGMY'	DWARF BARBERRY	LOW	LOR CHI	LOROPETALUM CHINENSE	CHINESE FRINGEFLOWER	LOW
LOW	BUDLEJA DAVIDI	BUTTERFLY BUSH	LOW	LOR 'C.F.'	LOROPETALUM 'CRIMSON FIRE'	CRIMSON FIRE FRINGEFLOWER	LOW
LOW	BUDLEJA 'DWARF'	DWARF BUTTERFLY BUSH	LOW	LOR 'RAZ'	LOROPETALUM C. 'RAZZLEBERRY'	RED FRINGEFLOWER	LOW
LOW	CAREX 'TUMULICOLA'	CAREX DIPSACEA	LOW	MUH RIG	MUHLENBERGIA RIGENS	DEERGRASS	LOW
LOW	CAREX 'TUMULICOLA'	CAREX DIPSACEA	LOW	MYR 'COM'	MYRTUS C. 'COMPACTA'	DWARF MYRTLE	LOW
LOW	CAPE RUSH	CAPE RUSH	LOW	NAN 'COM'	NANDINA D. 'COMPACTA'	DWARF HEAVENLY BAMBOO	LOW
LOW	CHONDROPETALUM TECTORUM	ROCKROSE	LOW	NAN 'H.D.'	NANDINA D. 'HARBOUR DWARF'	HARBOUR DWARF BAMBOO	LOW
LOW	CISTUS HYBRIDUS	ROCKROSE	LOW	NEP 'FAA'	NEPETA FAASSENII	CATMINT	LOW
LOW	CISTUS 'SKAANBERGII'	ROCKROSE	LOW	OLE 'L.O.'	OLEA E. 'LITTLE OLLIE'	DWARF OLIVE	LOW
LOW	COLEONEMA PULCHRUM	BREATH-OF-HEAVEN	LOW	PHO 'D.D.'	PHORMIUM 'PLATTS BLACK'	NEW ZEALAND FLAX	LOW
LOW	COLEONEMA P. 'SUNSET GOLD'	BREATH-OF-HEAVEN	LOW	PHO 'J.S.'	PHORMIUM 'JACK SPRATT'	NEW ZEALAND FLAX	LOW
LOW	DAPHNEAODORA	DAPHNE	LOW	PHO 'M.M.'	PHORMIUM T. 'MAORI MAIDEN'	NEW ZEALAND FLAX	LOW
LOW	DIETES BICOLOR	FORTNIGHT LILY	LOW	PHO 'RED'	PHORMIUM 'DWARF RED'	NEW ZEALAND FLAX	LOW
LOW	DIETES IRIDIODES	FORTNIGHT LILY	LOW	PHO 'Y.W.'	PHORMIUM 'YELLOW WAVE'	NEW ZEALAND FLAX	LOW
LOW	EPILOBIUM GANUM 'ROUTE 66'	ROUTE 66 FUSCHIA	LOW	PIT 'W.D.'	PITTOSPORUM 'WHEELER'S DWARF'	DWARF TOBIIRA	LOW
LOW	ERIGERON KARWINSKIANUS	SANTA BARBARA DAISY	LOW	PRU 'BAT'	PRUNUS 'BRIGHT & TIGHT'	BRIGHT & TIGHT LAUREL	LOW
LOW	EUONYMUS J. 'MICROPHYLLUS'	BOXLEAF EUONYMUS	LOW	RHA 'BAL'	RHAPHIOLEPIS L. 'BALLERINA'	INDIA HAWTHORN	LOW
LOW	EURYOPS P. 'MUNCHKIN'	EURYOPS P. 'MUNCHKIN'	LOW	RHA 'W.E.'	RHAPHIOLEPIS L. 'WHITE ENCHANTRESS'	INDIA HAWTHORN	LOW
LOW	FEUJA SELLOWIANA	PINEAPPLE GUAVA	LOW	ROS 'C.B.'	ROSA 'CECILE BRUNNER'	CECILE BRUNNER ROSE	LOW
LOW	FESTUCA 'MAIREII'	GREEN FESCUE	LOW	ROS 'C.I.'	ROSMARINUS 'COLLINGWOOD INGRAM'	ROSEMARY	LOW
LOW	GREVILLEA 'NOELII'	WOOLY GREVILLEA	LOW	ROS 'T.B.'	ROSEMARY 'TUSCAN BLUE'	ROSEMARY	LOW
LOW	HELIOTRICHON SEMPERVIRENS	BLUE DAT GRASS	LOW	SAL 'L.L.'	SALVIA 'LIME LIGHT'	LIME LIGHT SAGE	LOW
LOW	HYPERICUM MOSERIANUM	HYPERICUM	LOW	SOL 'HET'	SOLLYA HETEROPHYLLA	BLUEBELL CREEPER	LOW
LOW	JUNCUS PATENS	CALIFORNIA RUSH	LOW	STA 'BYZ'	STACHYS BYZANTINA	LAMB'S EAR	LOW
LOW	KNIFOPHIA 'PINEAPPLE POPSCICLE'	DWARF YELLOW POKER	LOW	SYR 'VUL'	SYRINGA VULGARIS	COMMON LILAC	LOW
LOW	LANTANA MONTEVIDENSIS	TRAILING LANTANA	LOW	TUL 'VIO'	TULHAGIA VIOLACEA	SOCIETY GARLIC	LOW
LOW	LAVATERA MARTINA	TREE MALLOW	LOW	XYL 'COM'	XYLOSMA C. 'COMPACTA'	COMPACT XYLOSMA	LOW
LOW	LAV 'MUN'	ENGLISH LAVANDER	LOW				

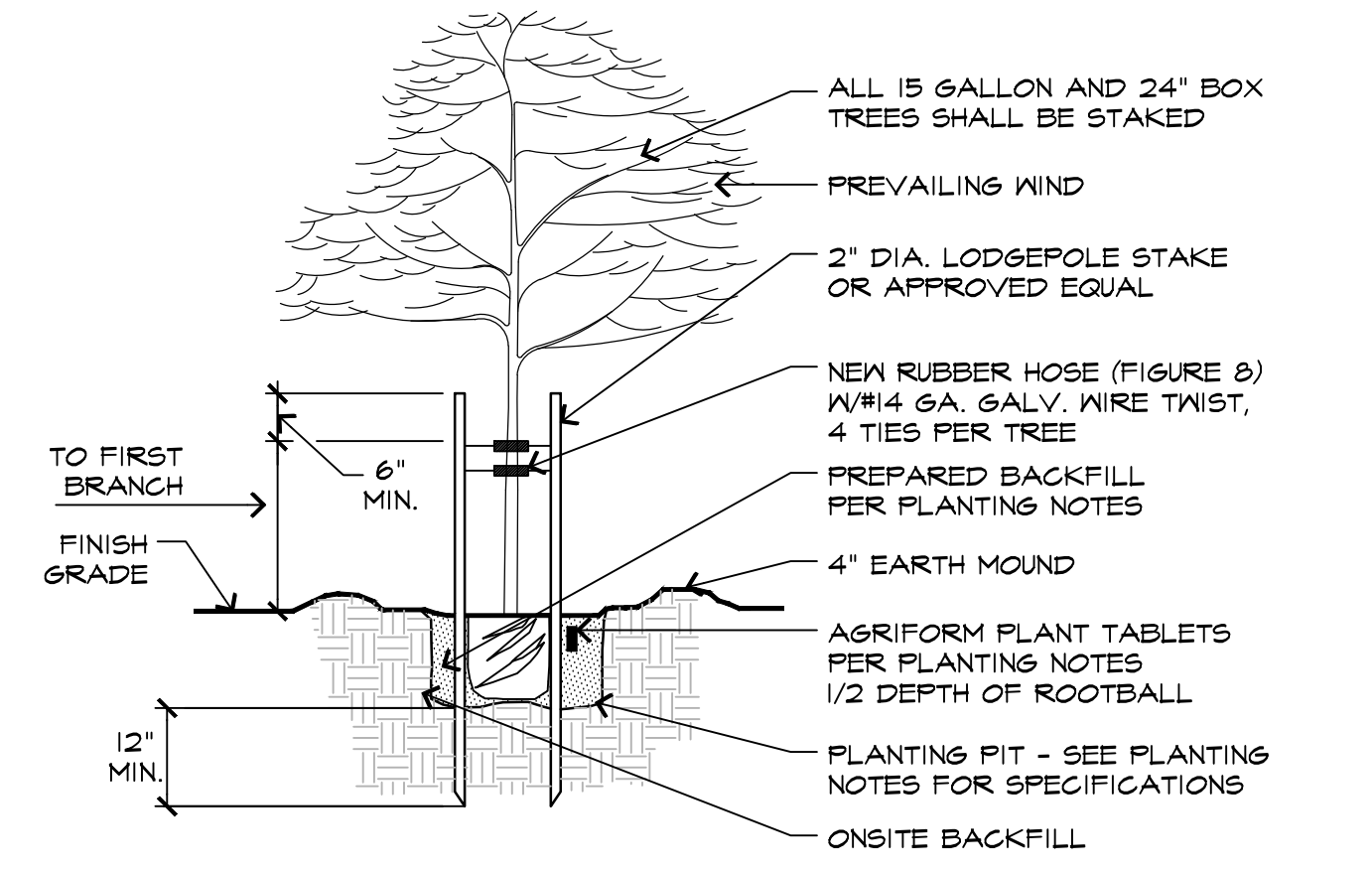
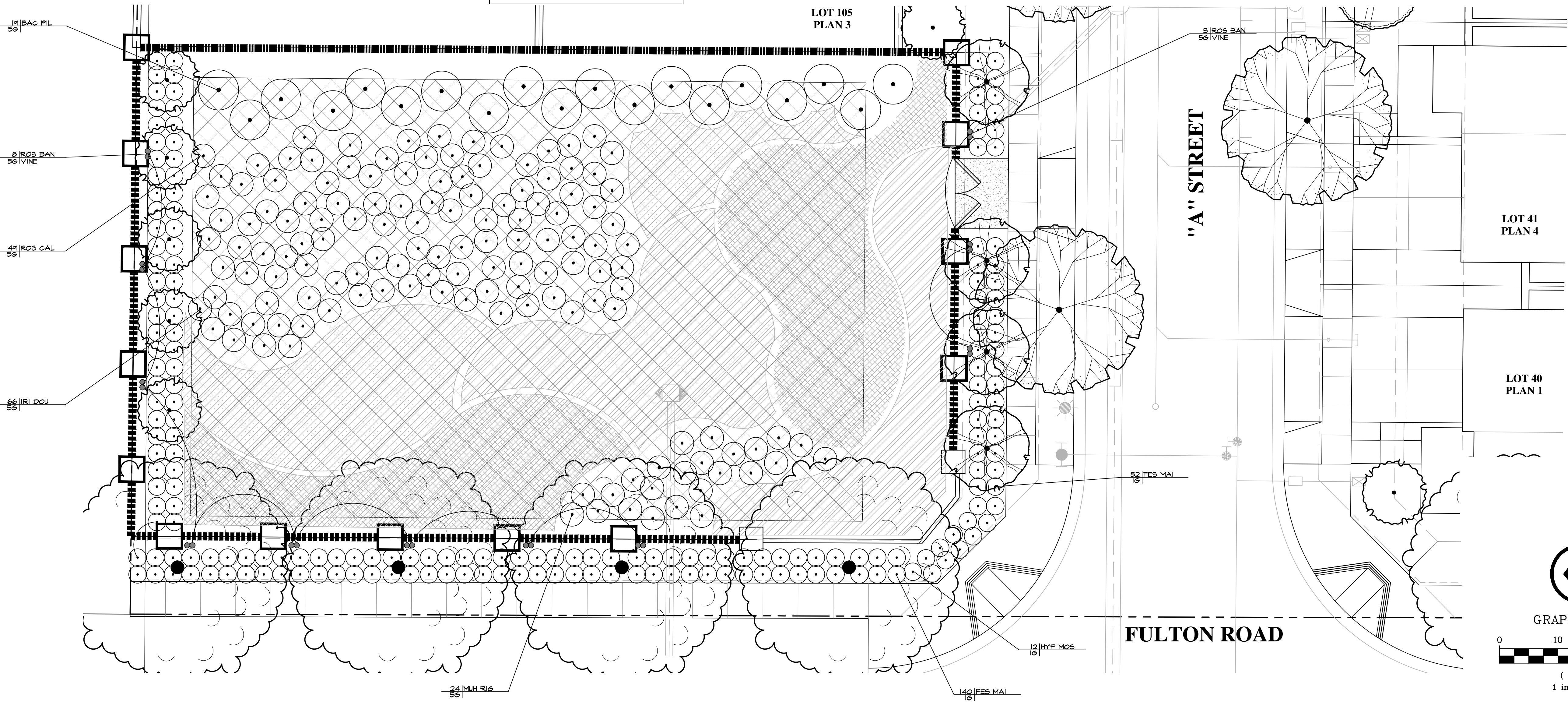
**PLANT CALLOUT SYMBOL KEY**

PLANT SIZE	PLANT SYMBOL	PLANT UNITS
15 GALLON	(Symbol: Circle with dot)	1
24 GALLON	(Symbol: Circle with dot)	1
36 GALLON	(Symbol: Circle with dot)	1
48 GALLON	(Symbol: Circle with dot)	1
60 GALLON	(Symbol: Circle with dot)	1

SYMBOL	BOTANICAL NAME	COMMON NAME	WATER USE
<b>BIO-RETENTION</b>			
(Symbol: Circle with dot)	BAC PIL	BACCHARIS PILLULARIS	LOW
(Symbol: Circle with dot)	IRI DOU	IRIS DOUGLASSIANA	LOW
(Symbol: Circle with dot)	MUH RIG	MUHLENBERGIA RIGENS	LOW
(Symbol: Circle with dot)	ROS CAL	ROSA CALIFORNICA	LOW
<b>BIO-RETENTION</b>			
(Symbol: Circle with dot)	ACHILEA M. 'OERTEL'S ROSE'	OERTEL'S ROSE YARROWA	LOW
(Symbol: Circle with dot)	JUNCUS EFFUSUS	CALIFORNIA RUSH	LOW
(Symbol: Circle with dot)	MIMULUS GUTTATUS	SEEP MONKEY FLOWER	LOW
<b>VINES</b>			
(Symbol: Circle with dot)	GELSEMIUM SEMPERVIRENS	CAROLINA JESSAMINE	LOW
(Symbol: Circle with dot)	MACFADYENA UNGUIS-CATI	YELLOW TRUMPET VINE	LOW
(Symbol: Circle with dot)	ROSA BANKSIAE	LADY BANKS ROSE	LOW
<b>GROUNDCOVERS</b>			
(Symbol: Circle with dot)	ARCTOSTAPHYLOS D. 'E.C.'	EMERALDCARPET BEARBERRY	LOW
(Symbol: Circle with dot)	SCAEVOLO 'MAUVE CLUSTERS'	FAN FLOWER	LOW
(Symbol: Circle with dot)	SENECIO MANDRALISCAE	BLUE CHALK STICKS	LOW

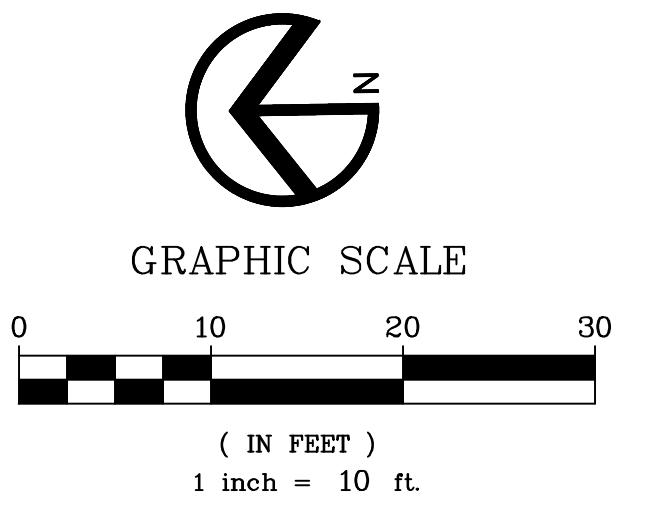
**NOTES:**

- ALL TREES SHALL BE PLANTED AND STAKED PER CITY STANDARDS.
- TREES TO BE PLANTED WITHIN 3' OF HARDSCAPE ELEMENTS, SHALL HAVE A LINEAR ROOT BARRIER INSTALLED ADJACENT TO THE HARDSCAPE ELEMENT AT TIME OF TREE PLANTING.
- LANDSCAPE AND IRRIGATION SHALL COMPLY WITH CITY'S CURRENT WATER-EFFICIENT LANDSCAPE ORDINANCE.
- ALL PLANTING AREAS SHALL BE AUTOMATICALLY IRRIGATED PER CITY STANDARDS. USING LOW-FLOW SPRAY, BUBBLERS OR DRIP METHODS.
- ALL PLANTING AREAS SHALL BE MULCHED TO A MINIMUM DEPTH OF 3".



**NOTE:**  
1. ROOT CONTROL BARRIER PANELS SHALL BE REQUIRED WHERE TREES IS WITHIN 10' FROM PAVING. ROOT SOLUTIONS ROOT BARRIER OR EQUAL MAY BE USED. LENGTH OF BARRIER TO BE CENTERED ON TREE.

**A TREE PLANTING AND STAKING DETAIL** SCALE: 1/2" = 1'-0"



**STONEBRIDGE**  
2220 FULTON ROAD  
SANTA ROSA, CA

**J. Kapolchok + Associates**  
Land Use Planning  
Urban Design

**RIPLEY DESIGN GROUP**

**CIVIL DESIGN CONSULTANTS, INC.**  
2200 Range Avenue, Suite 204  
Santa Rosa, CA 95403  
(707) 542-4820



**HUNT HALE JONES**

Architecture | Planning | Interiors  
444 Spear Street, Suite 105  
San Francisco, CA 94105  
www.hunthalejones.com  
t. 415-512-1300  
f. 415-288-0288

**BIO-RETENTION & ENTRY PLANTING**  
L5  
SCALE: 1"=10'  
DATE: 10.9.2020  
PROJECT: 352001.00

**PRELIMINARY PLANT LEGEND**

SYMBOL	BOTANICAL NAME	COMMON NAME	WATER USE	SYMBOL	BOTANICAL NAME	COMMON NAME	WATER USE
<b>SHRUBS</b>				<b>SHRUBS (CONT)</b>			
ANI 'B.P.'	ANIGOZANTHOS 'BUSH PEARL'	DWARF PINK KANGAROO PAW	LOW	LOM 'BRE'	LOMANDRA L. 'BREEZE'	DWARF MAT RUSH	LOW
ARB COM	ARBUS U. 'COMPACTA'	COMPACT STRAWBERRY TREE	LOW	LOR CHI	LOROPETALUM CHINENSE	CHINESE FRINGEFLOWER	LOW
ARC 'H.M.'	ARCTOSTAPHYLOS 'HOWARD MCMINN'	MANZANITA	LOW	LOR 'C.F.'	LOROPETALUM 'CRIMSON FIRE'	CRIMSON FIRE FRINGEFLOWER	LOW
BER 'C.P.'	BERBERIS 'CRIMSON PYGMY'	DWARF BARBERRY	LOW	LOR 'RAZ'	LOROPETALUM C. 'RAZZLEBERRY'	RED FRINGEFLOWER	LOW
BUD 'DAV'	BUDDEJA 'DAVID'	BUTTERFLY BUSH	LOW	MUH RIG	MUHLBERGIA RIGENS	DEER GRASS	LOW
BUD 'DWA'	BUDDEJA 'DWARF'	DWARF BUTTERFLY BUSH	LOW	MYR 'COM'	MYRTUS C. 'COMPACTA'	DWARF MYRTLE	LOW
CAR DIP	CAREX DIPSACEA	AUTUMN SEDGE	LOW	NAN 'COM'	NANDINA D. 'COMPACTA'	DWARF HEAVENLY BAMBOO	LOW
CAR 'TUM'	CAREX 'TUMULICOLA'	BERKELEY SEDGE	LOW	NAN 'H.D.'	NANDINA D. 'HARBOR DWARF'	HARBOR DWARF BAMBOO	LOW
CHO TEC	CHONDROPETALUM TECTORUM	CAPE RUSH	LOW	NEP FAA	NEPETA FAASSENII	CATMINT	LOW
CIS HYB	CISTUS HYBRIDUS	ROCKROSE	LOW	OLE 'L.O.'	OLEA E. 'LITTLE OLLIE'	DWARF OLIVE	LOW
CIS 'SKA'	CISTIS 'SKAANBERGII'	ROCKROSE	LOW	PHO 'D.D.'	PHORMIUM 'PLATTS BLACK'	NEW ZEALAND FLAX	LOW
COL PUL	COLEONEMA PULCHRUM	BREATH-OF-HEAVEN	LOW	PHO 'J.S.'	PHORMIUM 'JACK SPRATT'	NEW ZEALAND FLAX	LOW
DAP ODO	DAPHNEADORA	DAPHNE	LOW	PHO 'M.M.'	PHORMIUM T. 'MADRI MAIDEN'	NEW ZEALAND FLAX	LOW
DIE BIC	DIETES BICOLOR	FORTNIGHT LILY	LOW	PHO 'RED'	PHORMIUM 'DWARF RED'	NEW ZEALAND FLAX	LOW
DIE IRI	DIETES IRIDIODES	FORTNIGHT LILY	LOW	PHO 'Y.W.'	PHORMIUM 'YELLOW WAVE'	NEW ZEALAND FLAX	LOW
EUN 'MIC'	EUNYMIUS J. 'MICROPHYLLUS'	BOXLEAF EUONYMUS	LOW	PRU 'B&T'	PRUNUS 'BRIGHT & TIGHT'	BRIGHT & TIGHT LAUREL	LOW
EUR 'MUN'	EURYOPS P. 'MUNCHKIN'	DWARF EUONYMUS	LOW	RHA 'BAL'	RHAPHIOLEPIS I. 'BALLERINA'	INDIA HAWTHORN	LOW
FES 'MAI'	FESTUCA 'MAREII'	GREEN FESCUE	LOW	RHA 'W.E.'	RHAPHIOLEPIS I. 'WHITE ENCHANTRESS'	INDIA HAWTHORN	LOW
GRE 'NOE'	GREVILLEA 'NOELLI'	WOOLY GREVILLEA	LOW	ROS 'C.B.'	ROSA 'CECILE BRUNNER'	CECILE BRUNNER ROSE	LOW
HEL SEM	HELICTOTRICHON SEMPERVIRENS	BLUE OAT GRASS	LOW	ROS 'C.I.'	ROSMARINUS 'COLLINGWOOD INGRAM'	ROSEMARY	LOW
HYP MOS	HYPERICUM MOSERIANUM	HYPERICUM	LOW	ROS 'T.B.'	ROSMARINUS 'TUSCAN BLUE'	ROSEMARY	LOW
JUN PAT	JUNCUS PATENS	CALIFORNIA RUSH	LOW	SAL 'L.L.'	SALVIA 'LIME LIGHT'	LIME LIGHT SAGE	LOW
KNI 'P.P.'	KNIPHOPHIA 'PINEAPPLE POPSCICLE'	DWARF 'YELLOW POKER'	LOW	SOL HET	SOLLIA HETEROPHYLLA	BLUEBELL CREEPER	LOW
LAN 'P.L.'	LANTANA 'PURPLE LIGHTNING'	PURPLE LANTANA	LOW	STA BIZ	STACHYS BYZANTINA	LAMB'S EAR	LOW
LAV MAR	LAVATERA MARITIMA	TREE MALLOW	LOW	SYR VUL	SYRINGA VULGARIS	COMMON LILAC	LOW
LAV 'MUN'	LAVANDULA A. 'MUNSTEAD'	ENGLISH LAVENDER	LOW	TUL VIO	TULBAGIA VIOLACEA	SOCIETY GARLIC	LOW
LIG 'TEX'	LIGUSTRUM J. 'TEXANUM'	JAPANESE PRIVET	MEDIUM	XYL 'COM'	XYLOSMA C. 'COMPACTA'	COMPACT XYLOSMA	LOW
LIM 'PER'	LIMONUM 'PEREZII'	SEA LAVENDER	LOW				

**GROUNDCOVERS**

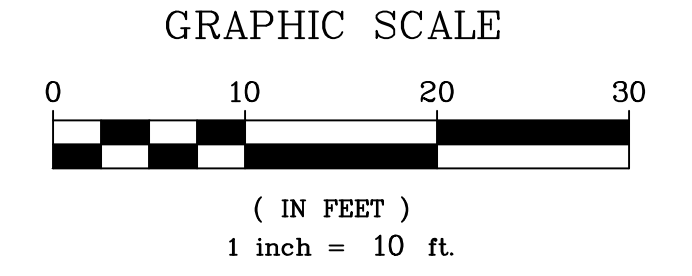
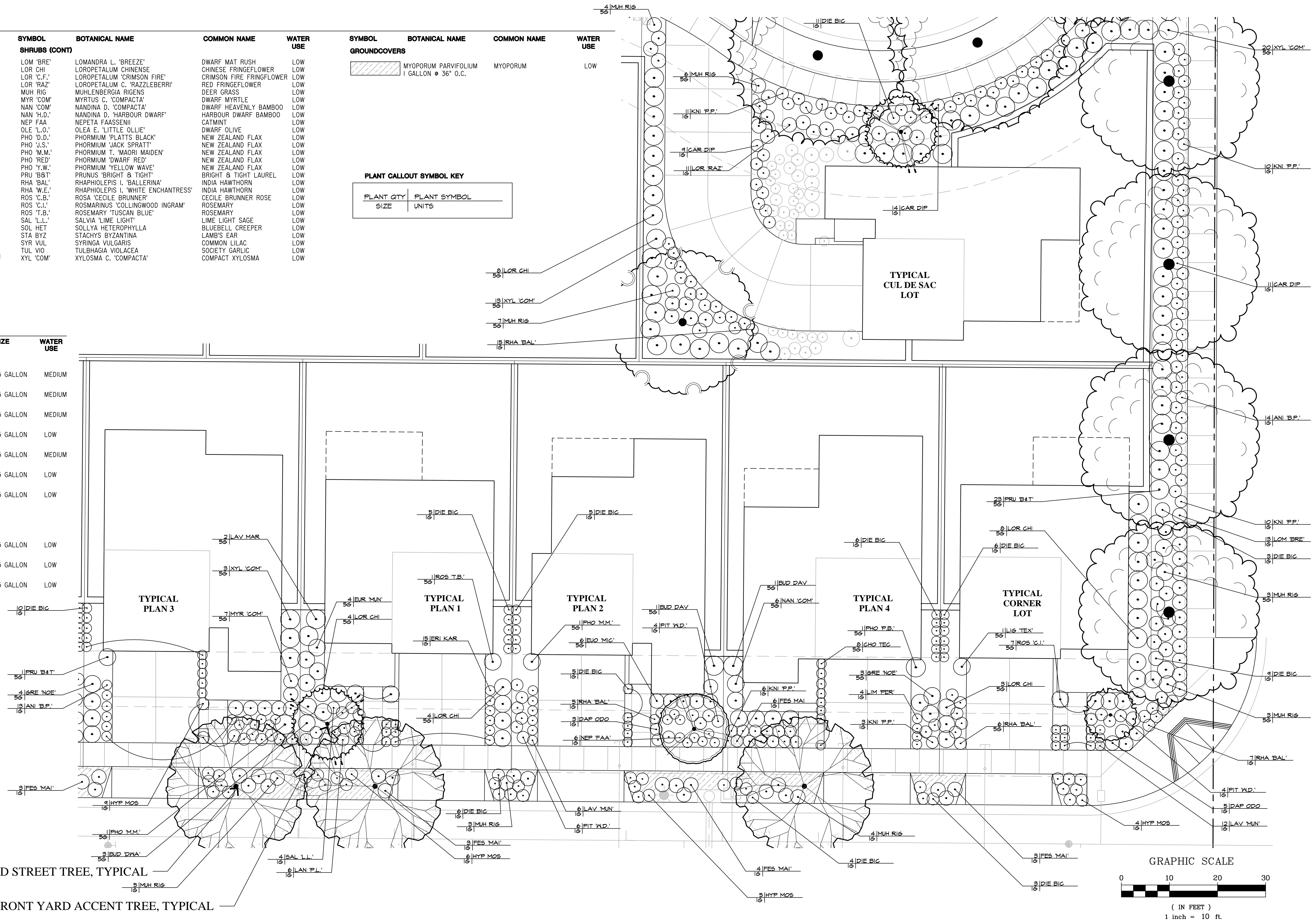
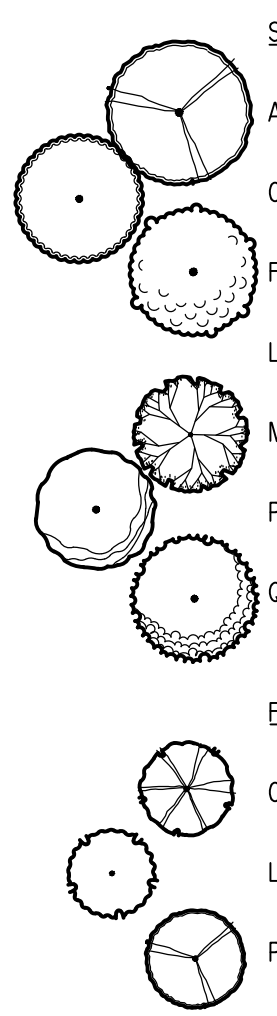
MYOPORUM PARVIFOLIUM  
1 GALLON @ 36" O.C.

**PLANT CALLOUT SYMBOL KEY**

PLANT QTY	PLANT SYMBOL
SIZE	UNITS

**PRELIMINARY TREE PALETTE**

BOTANICAL NAME	COMMON NAME	HEIGHT / SPREAD	SIZE	WATER USE
<b>STREET TREES</b>				
ACER F. 'A.B.'	AUTUMN BLAZE MAPLE	50'/40"	15 GALLON	MEDIUM
CELTIS AUSTRALIS	EUROPEAN HACKBERRY	40'/30"	15 GALLON	MEDIUM
FRAXINUS H. 'MORAIN'	MORAIN ASH	40'/40"	15 GALLON	MEDIUM
LAURUS N. 'SARATOGA'	SWEET BAY	30'/30"	15 GALLON	LOW
MAGNOLIA G. 'S.S.'	SOUTHERN MAGNOLIA	30'-40'/30"	15 GALLON	MEDIUM
PISTACHIA CHINENSIS	CHINESE PISTACHE	30'-60'/30'-60"	15 GALLON	LOW
QUERCUS SUBER	CORK OAK	30'-60'/30'-60"	15 GALLON	LOW
<b>FRONT YARD ACCENT TREES</b>				
CERCIS OCCIDENTALIS	WESTERN REDBUD	15'/15'	15 GALLON	LOW
LAGERSTROEMIA I. 'ZUNI'	PURPLE CRAPE MYRTLE	15' / 8'	15 GALLON	LOW
PRUNUS C. 'KRAUTER VESUVIUS/PURPLE-LEAF PLUM		20'/15'	15 GALLON	LOW



**STONEBRIDGE**  
2220 FULTON ROAD  
SANTA ROSA, CA

**J. Kapolchok + Associates**  
Land Use Planning  
Urban Design

**RIPLEY DESIGN GROUP**

**CIVIL DESIGN CONSULTANTS, INC.**  
2200 Range Avenue, Suite 204  
Santa Rosa, CA 95403  
(707) 542-4820



**HUNT HALE JONES**

Architecture | Planning | Interiors  
444 Spear Street, Suite 105  
San Francisco, CA 94105  
www.hunthalejones.com  
t. 415-512-1300  
f. 415-288-0288

**PLANTING - FRONT YARD TYPICALS**

**L6**

SCALE: 1"=10'  
DATE: 10.9.2020  
PROJECT: 352001.00

# PRELIMINARY PLANT LEGEND

SYMBOL	BOTANICAL NAME	COMMON NAME	WATER USE	SYMBOL	BOTANICAL NAME	COMMON NAME	WATER USE
<b>SHRUBS</b>				<b>SHRUBS (CONT)</b>			
ANI 'B.P.'	ANIGOZANTHOS 'BUSH PEARL'	DWARF PINK KANGAROO PAW	LOW	NAN 'H.D.'	NANDINA D. 'HARBOUR DWARF'	HARBOUR DWARF BAMBOO	LOW
BUD 'DAV'	BIDDLEJA 'DAVIDI'	BUTTERFLY BUSH	LOW	NEP FAA	NEPETA FAASSENI	CATMINT	LOW
BUD 'P.H.'	BIDDLEJA 'PURPLE HAZE'	PURPLE HAZE BUTTERFLYBUSH	LOW	OLE 'L.O.'	OLEA E. 'LITTLE OLLIE'	DWARF OLIVE	LOW
CAR DIP	CAREX DIPSAEA	AUTUMN SEDGE	LOW	PHO 'D.D.'	PHORMIUM 'PLATTS BLACK'	NEW ZEALAND FLAX	LOW
CHO TEC	CHONDRROPETALUM TECTORUM	CAPE RUSH	LOW	PHO 'J.S.'	PHORMIUM 'JACK SPRATT'	NEW ZEALAND FLAX	LOW
CIS HYB	CISTUS HYBRIDUS	ROCKROSE	LOW	PHO 'M.M.'	PHORMIUM T. 'MAORI MAIDEN'	NEW ZEALAND FLAX	LOW
CIS 'SKA'	CISTIS 'SKAANBERGII'	ROCKROSE	LOW	PHO 'S.J.'	PHORMIUM 'SEA JADE'	NEW ZEALAND FLAX	LOW
COL PUL	COLEONEMA PULCHRUM	BREATH-OF-HEAVEN	LOW	PHO 'TON'	PHORMIUM 'TONY TINY'	NEW ZEALAND FLAX	LOW
DIE IRI	DIETES IRIDIODES	FORTNIGHT LILY	LOW	PHO 'Y.W.'	PHORMIUM 'YELLOW WAVE'	NEW ZEALAND FLAX	LOW
EUO 'MIC'	EUONYMUS J. 'MICROPHYLLUS'	BOXLEAF EUONYMUS	LOW	PHO 'W.G.'	PHORMIUM 'WINGS OF GOLD'	NEW ZEALAND FLAX	LOW
EUR 'MUN'	EURYOPS P. 'MUNCHKIN'	DWARF EURYOPS	LOW	PIT 'W.D.'	PITTIOSPORUM 'WHEELER'S DWARF'	DWARF TOBIRA	LOW
FEI SEL	FEIJOA SELLOWIANA	PINEAPPLE GUAVA	LOW	PRU 'B8'	PRUNUS 'BRIGHT & TIGHT'	BRIGHT & TIGHT LAUREL	LOW
FES 'MAI'	FESTUCA 'MAIREII'	GREEN FESCUE	LOW	RHA 'BAL'	RHAPHIOLEPIS I. 'BALLERINA'	INDIA HAWTHORN	LOW
GRE 'NOE'	GREVILLEA 'NOELLII'	WOOLY GREVILLEA	LOW	RHA 'W.E.'	RHAPHIOLEPIS I. 'WHITE ENCHANTRESS'	INDIA HAWTHORN	LOW
HEL SEM	HELICTOTRICHON SEMPERVIRENS	BLUE OAT GRASS	LOW	ROS 'C.B.'	ROSA 'CECILE BRUNNER'	CECILE BRUNNER ROSE	LOW
HYP MOS	MYPERICUM MOSERIANUM	HYPERICUM	LOW	ROS 'C.I.'	ROSMARINUS 'COLLINGWOOD INGRAM'	ROSEMARY	LOW
KNI 'P.P.'	KNIFOPHIA 'PINEAPPLE POPSICLE'	DWARF YELLOW POKER	LOW	ROS 'T.B.'	ROSEMARY 'TUSCAN BLUE'	ROSEMARY	LOW
LAN 'CON'	LANTANA 'CONFETTI'	CONFETTI LANTANA	LOW	SAL 'L.L.'	SALVIA 'LIME LIGHT'	LIME LIGHT SAGE	LOW
LAV MAR	LAVATERA MARITIMA	TREE MALLOW	LOW	SOL 'HET'	SOLLYA HETEROPHYLLA	BLUEBELL CREEPER	LOW
LIG 'TEX'	LIGUSTRUM J. 'TEXANUM'	JAPANESE PRIVET	MEDIUM	STA BYZ	STACHYS BYZANTINA	LAMB'S EAR	LOW
LIM 'PER'	LIMONIUM 'PEREZII'	SEA LAVENDER	LOW	SYR VUL	SYRINGA VULGARIS	COMMON LILAC	LOW
LOR CHI	LOROPETALUM CHINENSE	CHINESE FRINGEFLOWER	LOW	TUL VIO	TULBAGIA VIOLACEA	SOCIETY GARLIC	LOW
LOR 'C.F.'	LOROPETALUM 'CRIMSON FIRE'	CRIMSON FIRE FRINGEFLOWER	LOW	XYL 'COM'	XYLOSMA C. 'COMPACTA'	COMPACT XYLOSMA	LOW
LOR 'RAZ'	LOROPETALUM C. 'RAZZLEBERRI'	RED FRINGEFLOWER	LOW				
LOR 'S.P.'	LOROPETALUM 'SIZZLING PINK'	PINK FRINGEFLOWER	LOW				
MUH RIG	MUHLENBERGIA RIGENS	DEER GRASS	LOW				
MYR 'COM'	MYRTUS C. 'COMPACTA'	DWARF MYRTLE	LOW				
NAN 'COM'	NANDINA D. 'COMPACTA'	DWARF HEAVENLY BAMBOO	LOW				

SYMBOL	BOTANICAL NAME	WATER USE
<b>GROUNDCOVERS</b>		
	MYOPORUM PARVIFOLIUM	LOW
	1 GALLON @ 36" O.C.	

PLANT CALLOUT SYMBOL KEY	
PLANT QTY	PLANT SYMBOL
SIZE	UNITS

NOTE:  
 1. SEE L6 FOR PRELIMINARY TREE PALETTE  
 2. SEE L8 FOR FULL HYDROZONE CALCULATIONS

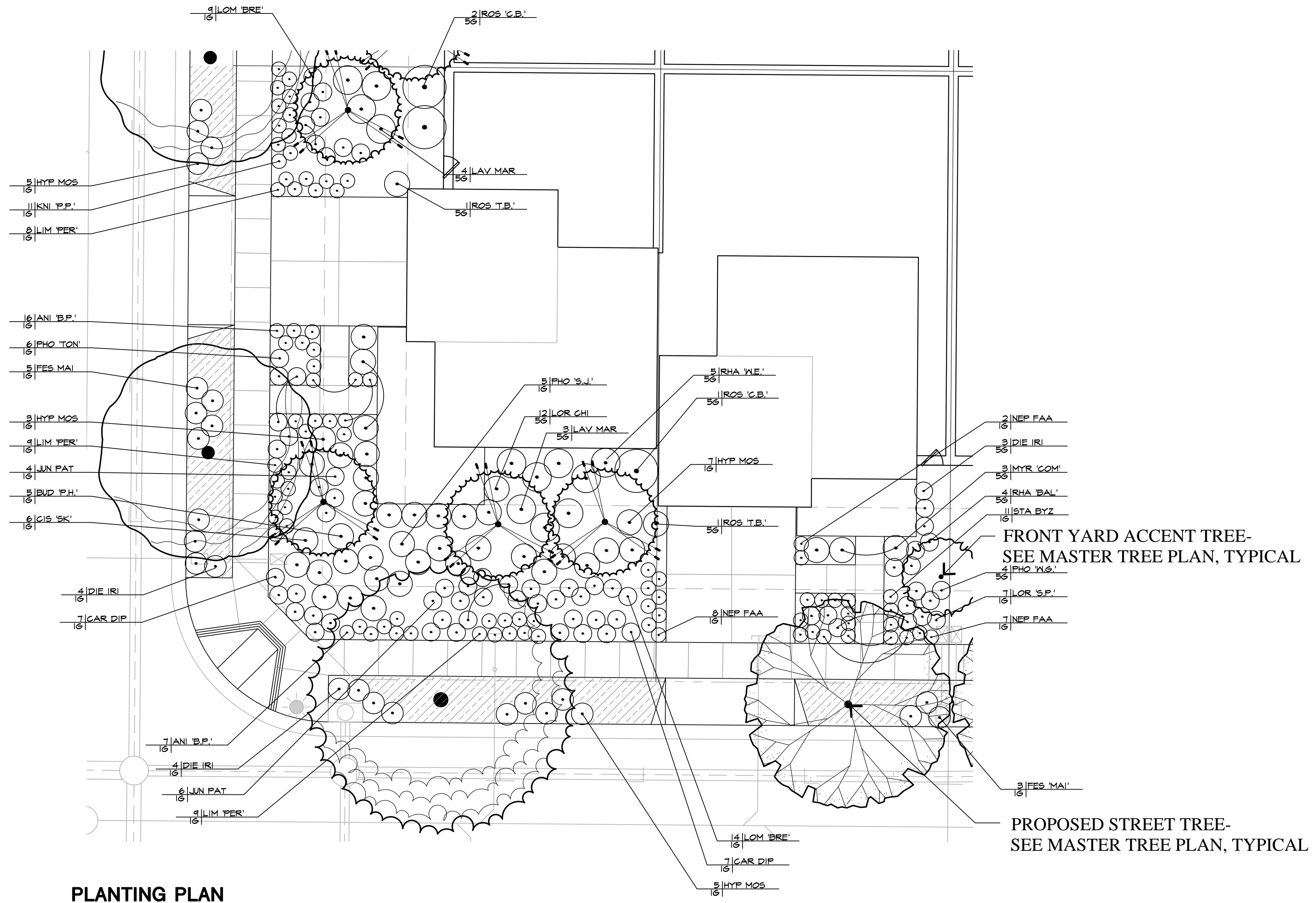
# LANDSCAPE HYDROZONE LEGEND

	ZONE A: PARTIAL TO FULL SUN, 80% MINIMUM DROUGHT TOLERANT PLANTING, AND UP TO 20% MEDIUM WATER USE PLANTING WITH DRIP EMITTERS.
	ZONE B: LOW WATER USE STREET TREES AND ACCENT TREES WITH INDIVIDUAL BUBBLERS (NOT SHOWN)
	ZONE C: MEDIUM WATER USE STREET TREES AND ACCENT TREES WITH INDIVIDUAL BUBBLERS (NOT SHOWN)

NOTE:  
 MEDIUM WATER USE SHRUB PLANTING AREAS SHALL NOT EXCEED 20% OF TOTAL LANDSCAPED AREA. SEPARATE VALVES TO BE USED FOR MEDIUM WATER USE SHRUBS.

# HYDROZONE INFORMATION TABLE - CORNER

HYDROZONE (WATER USE)	ZONE/ VALVE	IRRI. METHOD	AREA	% OF LANDSCAPE AREA
LOW	G-1	DRIP	2,877 SF	97%
LOW	G-2	BUBBLER	56 SF	2%
MED	G-3	BUBBLER	7 SF	1%
<b>TOTAL</b>			2,940 SF	100%



PLANTING PLAN



HYDROZONE PLAN

**STONEBRIDGE**  
 2220 FULTON ROAD  
 SANTA ROSA, CA

843 Second Street  
 Santa Rosa, CA 95404  
**J. Kapolchok + Associates**  
 Land Use Planning  
 Urban Design

**RIPLEY DESIGN GROUP**

**CIVIL DESIGN CONSULTANTS, INC.**  
 2200 Range Avenue, Suite 204  
 Santa Rosa, CA 95403  
 (707) 542-4820



**HUNT HALE JONES**

Architecture | Planning | Interiors  
 444 Spear Street, Suite 105  
 San Francisco, CA 94105  
 www.hunthalejones.com  
 t. 415-512-1300  
 f. 415-288-0288

**PLANTING - FRONT YARD TYPICALS**  
 GRAPHIC SCALE  
  
 ( IN FEET )  
 1 inch = 10 ft.  
 SCALE: 1"=10'  
 DATE: 10.9.2020  
 PROJECT: 352001.00



**CRAFTSMAN - ELEVATION A - SIGNATURE PLANTS**

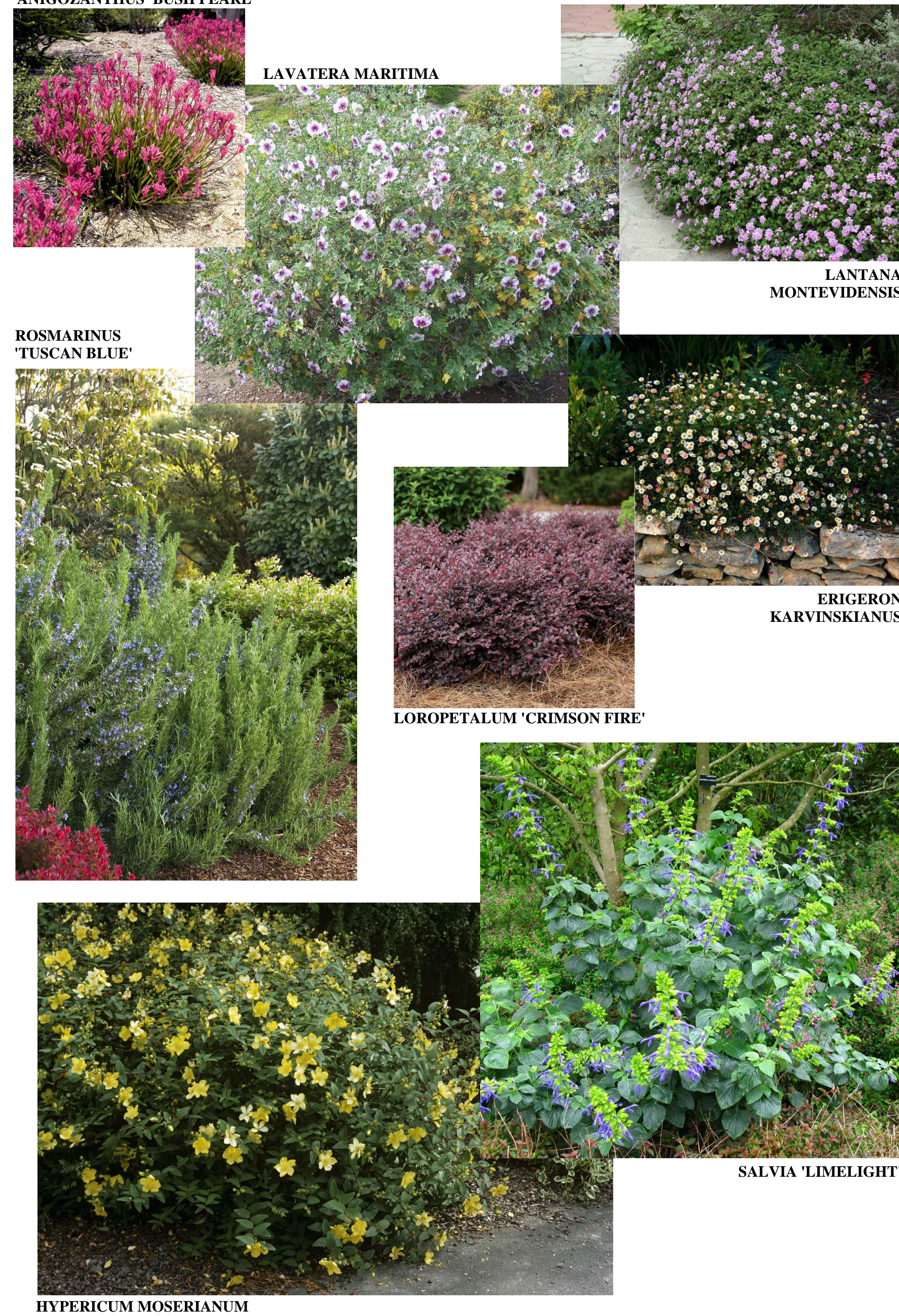
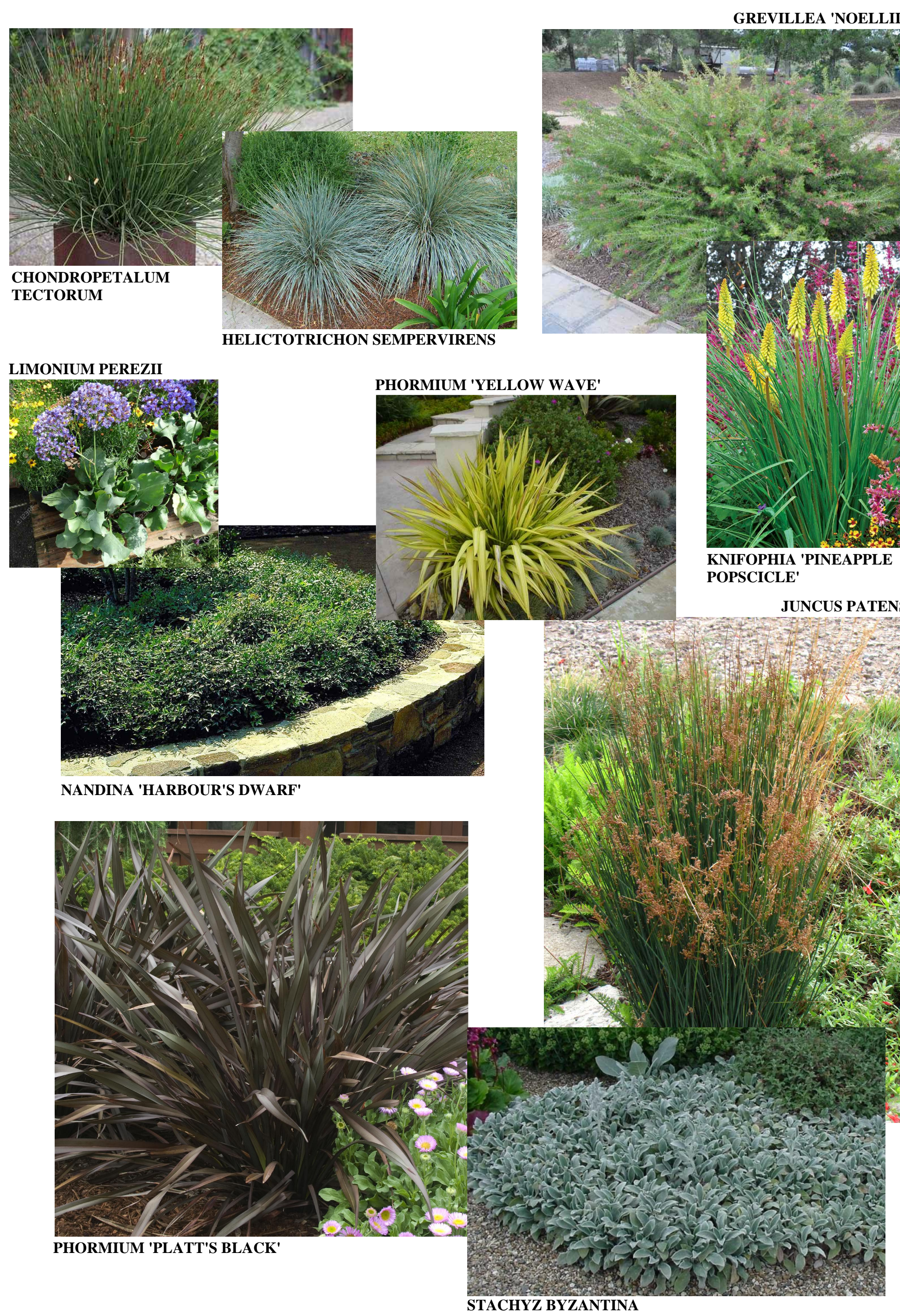
SYMBOL SHRUBS	BOTANICAL NAME	COMMON NAME	WATER USE
CHO TEC	CHONDRPETALUM TECTORUM	CAPE RUSH	LOW
GRE 'NOE'	GREVILLEA 'NOELLII'	WOOLY GREVILLEA	LOW
HEL SEM	HELICOTRICHON SEMPERVIRENS	BLUE OAT GRASS	LOW
JUN PAT	JUNCUS PATENS	CALIFORNIA RUSH	LOW
KNI 'P.P.'	KNIFOPHIA 'PINEAPPLE POPSCICLE'	DWARF YELLOW POKER	LOW
LIM PER	LIMONIUM PEREZII	SEA LAVENDER	LOW
NAN 'H.D.'	NANDINA D. 'HARBOUR DWARF'	HARBOUR DWARF BAMBOO	LOW
PHO 'P.B.'	PHORMIUM 'PLATT'S BLACK'	NEW ZEALAND FLAX	LOW
PHO 'Y.W.'	PHORMIUM 'YELLOW WAVE'	NEW ZEALAND FLAX	LOW
STA BYZ	STACHYS BYZANTINA	LAMB'S EAR	LOW

**FARMHOUSE - ELEVATION B - SIGNATURE PLANTING**

SYMBOL SHRUBS	BOTANICAL NAME	COMMON NAME	WATER USE
ANI 'B.P.'	ANIGOZANTHOS 'BUSH PEARL'	DWARF PINK KANGAROO PAW	LOW
ERI KAR	ERIGERON KARVINSKIANUS	SANTA BARBARA DAISY	LOW
HYP MOS	MYPERICUM MOSERIANUS	HYPERICUM	LOW
LAV MON	LANTANA MONTEVIDENSIS	TRAILING LANTANA	LOW
LAV MAR	LAVATERA MARITIMA	TREE MALLOW	LOW
LOR 'C.F.'	LOROPETALUM 'CRIMSON FIRE'	CRIMSON FIRE FRINGFLOWER	LOW
ROS 'T.B.'	ROSEMARY 'TUSCAN BLUE'	ROSEMARY	LOW
SAL 'L.L.'	SALVIA 'LIME LIGHT'	LIME LIGHT SAGE	LOW

**TRADITIONAL - ELEVATION C - SIGNATURE PLANTING**

SYMBOL SHRUBS	BOTANICAL NAME	COMMON NAME	WATER USE
BUD 'DAV'	BUDDLEJA 'DAVIDII'	BUTTERFLY BUSH	LOW
DAP ODO	DAPHNE ODORA	DAPHNE	LOW
EVO 'MIC'	EUONYMUS J. 'MICROPHYLLUS'	BOXLEAF EUONYMUS	LOW
LAV 'MUN'	LAVANDULA A. 'MUNSTEAD'	ENGLISH LAVANDER	LOW
LIG 'TEX'	LIGUSTRUM J. 'TEXANUM'	JAPANESE PRIVET	LOW
PIT 'W.D.'	PITTOSPORUM 'WHEELER'S DWARF'	DWARF TOBIRA	LOW
RHA 'BAL'	RHAPHIOLEPIS L. 'BALLERINA'	INDIA HAWTHORN	LOW
ROS 'C.B.'	ROSA 'CECILE BRUNNER'	CECILE BRUNNER ROSE	LOW
SYR VUL	SYRINGA VULGARIS	COMMON LILAC	LOW



**RIPLEY DESIGN GROUP**

**STONEBRIDGE**  
2220 FULTON ROAD  
SANTA ROSA, CA

843 Second Street  
Santa Rosa, CA 95404

**J. Kopolchok + Associates**  
Land Use Planning  
Urban Design

**RIPLEY DESIGN GROUP**

**CIVIL DESIGN CONSULTANTS, INC.**  
2200 Range Avenue, Suite 204  
Santa Rosa, CA 95403  
(707) 542-4820



**HUNT HALE JONES**

Architecture | Planning | Interiors

444 Spear Street, Suite 105  
San Francisco, CA 94105  
www.hunthalejones.com

t. 415-512-1300  
f. 415-288-0288

**PLANTING IMAGES**

L7

SCALE: NTS

DATE: 10.9.2020

PROJECT: 352001.00

**CONCEPTUAL LANDSCAPE STATEMENT**

REGIONAL AND MICRO-CLIMATE CONDITIONS, SOLAR ORIENTATION AND SOIL CONDITIONS WILL BE TAKEN INTO ACCOUNT WITH REGARDS TO PLANT SELECTION AND PLACEMENT. THE PLANT PALETTE PROVIDES MANY PLANTS WITH VARYING GROWTH HABITS, PREFERENCES AND TOLERANCES, SO SELECTION OF JUST THE RIGHT PLANT SHOULD NOT BE DIFFICULT. A HIGH PERCENTAGE OF PLANTS SELECTED WILL BE DROUGHT TOLERANT AND APPROPRIATE FOR THE CLIMATE. THIS PALETTE, ALONG WITH A DRIP IRRIGATION SYSTEM WILL CONSERVE WATER WITHIN THE PROJECT.

BY SPECIFYING PLANTS WHICH REQUIRE LITTLE TO NO PRUNING, THE GREEN WASTE WILL BE REDUCED. PLANTS SELECTED WILL COMPLEMENT THE ARCHITECTURE AND THE OVERALL VISION OF THE STONEBRIDGE COMMUNITY. THE PLANT PALETTE WAS DERIVED FROM THE RECOMMENDED PLANT LIST ALONG WITH OTHERS THAT FIT THE DESIGN AESTHETIC.

ENTRYWAYS AND PICTURE WINDOWS WILL BE FRAMED BY SPECIMEN SHRUBS AND NODES WILL HAVE ACCENT PLANTINGS. PLANT SPECIES WHICH ENHANCE THE ARCHITECTURAL ELEVATIONS SHALL BE USED. A DIVERSE USE OF PLANT SPECIES WILL DISPLAY VARIOUS TEXTURES, FORMS, FOLIAGE COLOR, AND FLOWERS; WILL CREATE A BEAUTIFUL LANDSCAPE TO CONTRIBUTE AESTHETICALLY TO THE SURROUNDING NEIGHBORHOODS.

THE TREES HAVE BEEN SELECTED TO HAVE NON-INVASIVE ROOT SYSTEMS, AND PLACED WITH ADEQUATE SETBACKS TO ENSURE NO CONFLICT WITH UTILITIES AND HARDSCAPE, OR CONFLICT WITH ANY SITE LINE DISTANCES. ROOT BARRIERS WILL BE INSTALLED ON ALL TREES NEAR PAVING AND UTILITIES. WHERE FEASIBLE, TREES HAVE BEEN PLACED TO MITIGATE SOLID BUILDING SURFACES AND FENCES. TALLER SHRUBS WILL ALSO BE LOCATED AT SOLID BUILDING SURFACES AND FENCES, WHILE LOWER SHRUBS WILL BE LOCATED WHERE GROUND LEVEL WINDOWS AND ARCHITECTURAL FEATURES OCCUR, AND AT CORNERS TO MAINTAIN SITE LINE DISTANCES.

THE IRRIGATION SYSTEM WILL USE WEATHER-BASED CONTROLLERS TO CONSERVE THE USE OF WATER. SPRAY IRRIGATION WILL ONLY OCCUR AT TURF AREAS, AND SPRAY HEADS WITH LOW PRECIPITATION RATES WILL BE USED TO MINIMIZE RUNOFF, EROSION AND OVERSPRAY. THE BALANCE OF THE PLANTING AREAS WILL BE IRRIGATED USING DRIP IRRIGATION METHODS. THE TREES WILL BE ON SEPARATE VALVES AND WILL BE IRRIGATED WITH BUBBLERS. SHRUBS WILL BE HYDROZONED ACCORDING TO THEIR WATER REQUIREMENTS AND MICROCLIMATES.

IT IS OUR INTENT TO SPECIFY IN THE LANDSCAPE CONSTRUCTION DOCUMENTS THE USE OF RECYCLED MATERIALS SUCH AS RECYCLED WOOD MULCH, INGREDIENTS WITHIN THE CONCRETE, FORMWORK, SITE FURNITURE, ETC. IT IS OUR INTENT TO STOCKPILE THE TOPSOIL FOR RE-USE, UNLESS SOIL TESTS DEEM THE SOIL INADEQUATE AND RECOMMEND IMPORTED SOIL. WE INTEND TO RECYCLE A MINIMUM OF 50% OF THE LANDSCAPE CONSTRUCTION AND GREEN WASTES.

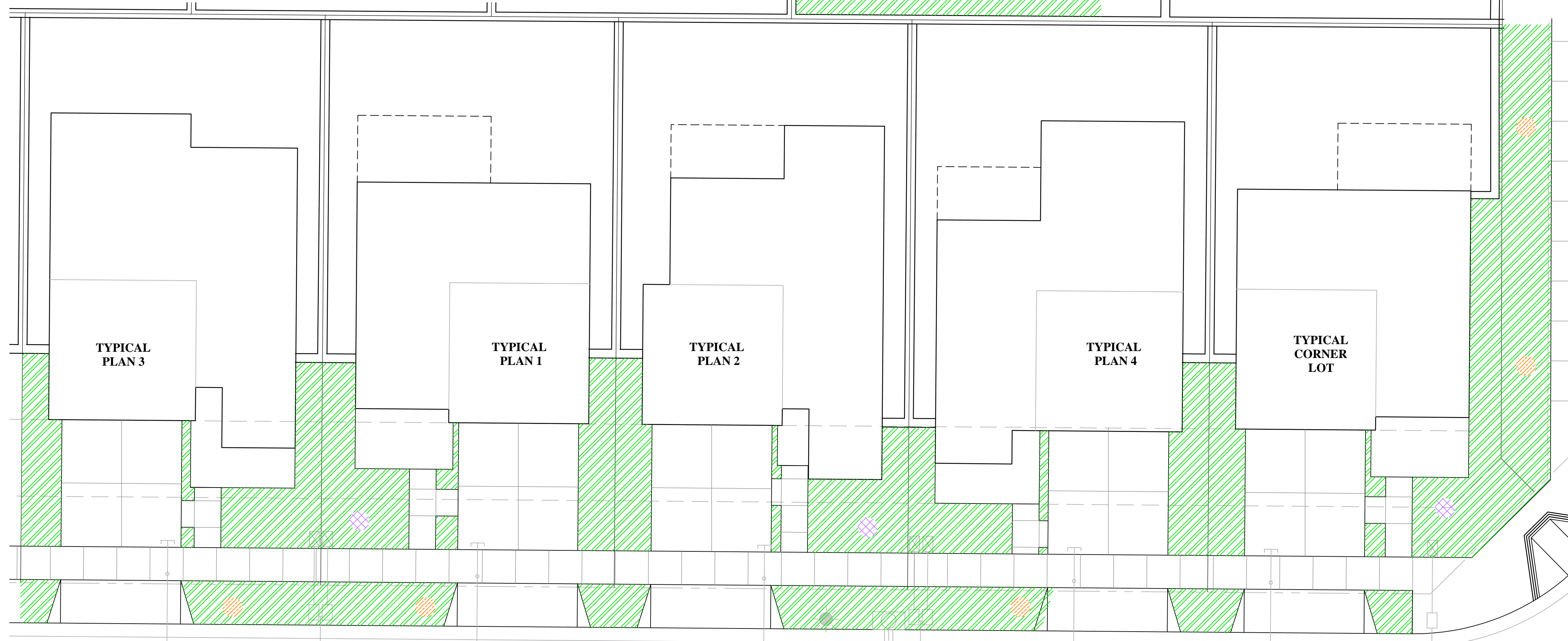
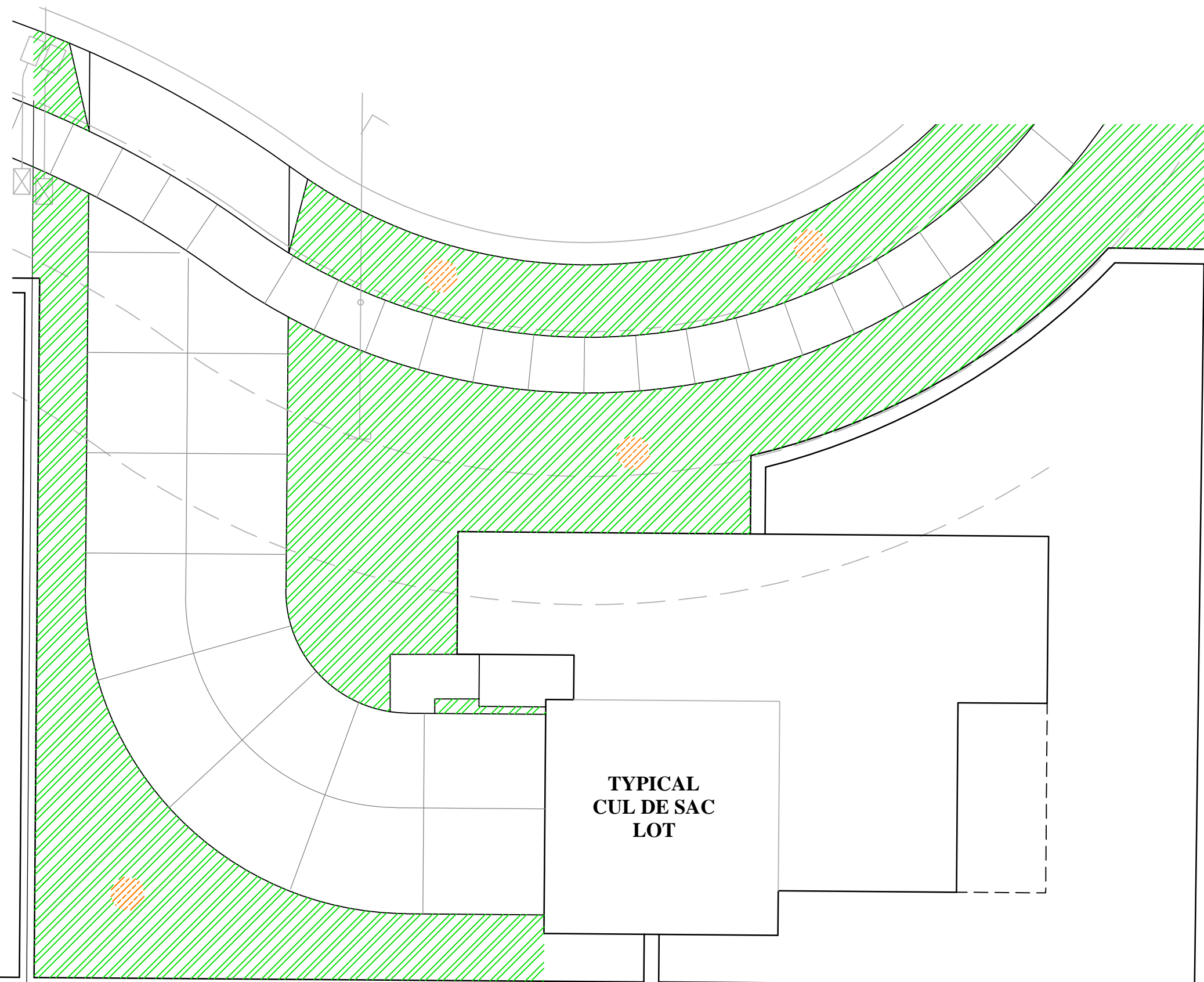
**WATER USE CALCULATIONS TYPICALS:**

THE MAXIMUM APPLIED WATER ALLOWANCE (MAWA) IN GALLONS PER YEAR IS BASED ON THE FOLLOWING FORMULA:  
 $MAWA = (ET_0)(0.62)(0.55 \times LA)$

THE ESTIMATED TOTAL WATER USE (ETWU) IS THE SUM TOTAL OF ESTIMATED WATER USE FOR EACH HYDROZONE IN GALLONS PER YEAR AND IS BASED ON THE FOLLOWING FORMULA:  
 $ETWU = (ET_0)(0.62)(PF \times HA) + SLAI$

ET<sub>0</sub> = REFERENCE EVAPOTRANSPIRATION (INCHES PER YEAR)  
 LA = LANDSCAPE AREA  
 HA = HYDROZONE AREA (SQUARE FEET)  
 PF = PLANT FACTOR FROM WUCOLS  
 IE = IRRIGATION EFFICIENCY (0.8)  
 0.55 = ET ADJUSTMENT FACTOR  
 0.62 = CONVERSION FACTOR (TO GALLONS)

REFERENCE EVAPOTRANSPIRATION (ET<sub>0</sub>) : 42.0  
 MAXIMUM APPLIED WATER ALLOWANCE: 82,051 GAL/YR  
 $MAWA = (42.0) \times (0.62) \times (0.55 \times 5,729) = 82,051 \text{ GAL/YR}$   
 ESTIMATED TOTAL WATER USE: 37,150 GAL/YR  
 $LOW \text{ ETWU} = (42.0) \times (0.62) \times (0.20 \times 5,680) = 36,520 \text{ GAL/YR}$   
 $MED \text{ ETWU} = (42.0) \times (0.62) \times (0.40 \times 49) = 630 \text{ GAL/YR}$



**HYDROZONE INFORMATION TABLE - PLAN 1**

HYDROZONE (WATER USE)	ZONE/ VALVE	IRRIQ. METHOD	AREA	% OF LANDSCAPE AREA
LOW	A-1	DRIP	525 SF	98%
LOW	A-2	BUBBLER	7 SF	1%
MED	A-3	BUBBLER	7 SF	1%
<b>TOTAL</b>			539 SF	100%

**HYDROZONE INFORMATION TABLE - PLAN 2**

HYDROZONE (WATER USE)	ZONE/ VALVE	IRRIQ. METHOD	AREA	% OF LANDSCAPE AREA
LOW	B-1	DRIP	522 SF	99%
LOW	B-2	BUBBLER	7 SF	1%
<b>TOTAL</b>			529 SF	100%

**HYDROZONE INFORMATION TABLE - PLAN 3**

HYDROZONE (WATER USE)	ZONE/ VALVE	IRRIQ. METHOD	AREA	% OF LANDSCAPE AREA
LOW	C-1	DRIP	497 SF	99%
MED	C-2	BUBBLER	7 SF	1%
<b>TOTAL</b>			504 SF	100%

**HYDROZONE INFORMATION TABLE - PLAN 4**

HYDROZONE (WATER USE)	ZONE/ VALVE	IRRIQ. METHOD	AREA	% OF LANDSCAPE AREA
LOW	D-1	DRIP	498 SF	99%
MED	D-2	BUBBLER	7 SF	1%
<b>TOTAL</b>			505 SF	100%

**HYDROZONE INFORMATION TABLE - CORNER**

HYDROZONE (WATER USE)	ZONE/ VALVE	IRRIQ. METHOD	AREA	% OF LANDSCAPE AREA
LOW	E-1	DRIP	1,139 SF	98%
LOW	E-2	BUBBLER	7 SF	1%
MED	E-3	BUBBLER	14 SF	1%
<b>TOTAL</b>			1,160 SF	100%

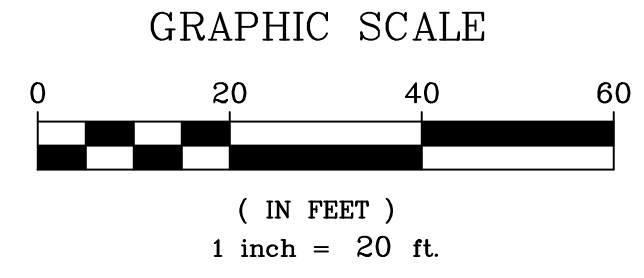
**HYDROZONE INFORMATION TABLE - CUL-DE-SAC**

HYDROZONE (WATER USE)	ZONE/ VALVE	IRRIQ. METHOD	AREA	% OF LANDSCAPE AREA
LOW	F-1	DRIP	2,480 SF	99%
MED	F-2	BUBBLER	14 SF	1%
<b>TOTAL</b>			2,492 SF	100%

**LANDSCAPE HYDROZONE LEGEND**

- ZONE A: PARTIAL TO FULL SUN, 80% MINIMUM DROUGHT TOLERANT PLANTING, AND UP TO 20% MEDIUM WATER USE PLANTING WITH DRIP EMITTERS.
- ZONE B: LOW WATER USE STREET TREES AND ACCENT TREES WITH INDIVIDUAL BUBBLERS (NOT SHOWN)
- ZONE C: MEDIUM WATER USE STREET TREES AND ACCENT TREES WITH INDIVIDUAL BUBBLERS (NOT SHOWN)

NOTE: MEDIUM WATER USE SHRUB PLANTING AREAS SHALL NOT EXCEED 20% OF TOTAL LANDSCAPED AREA. SEPARATE VALVES TO BE USED FOR MEDIUM WATER USE SHRUBS.



**STONEBRIDGE**  
 2220 FULTON ROAD  
 SANTA ROSA, CA

843 Second Street  
 Santa Rosa, CA 95404  
**J. Kaporchok**  
 + Associates  
 Land Use Planning  
 Urban Design

**RIPLEY**  
 DESIGN  
 GROUP

**CIVIL DESIGN CONSULTANTS, INC.**  
 2200 Range Avenue, Suite 204  
 Santa Rosa, CA 95403  
 (707) 542-4820



**HUNT**  
 HALE  
 JONES

Architecture | Planning | Interiors  
 444 Spear Street, Suite 105  
 San Francisco, CA 94105  
 www.hunthalejones.com  
 t. 415-512-1300  
 f. 415-288-0288

**WATER USE / HYDROZONE DATA**

SCALE: 1"=10'  
 DATE: 10.9.2020  
 PROJECT: 352001.00