



# COVID-19 Case Trends, Hospitalizations and Vaccine Updates

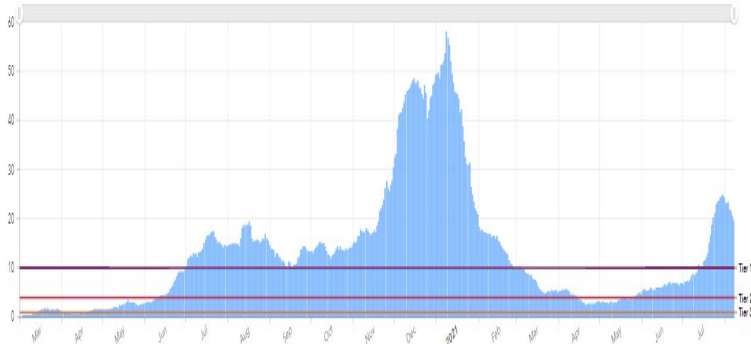
**August 31, 2021**

**Dr. Sundari Mase**  
Sonoma County Health Officer

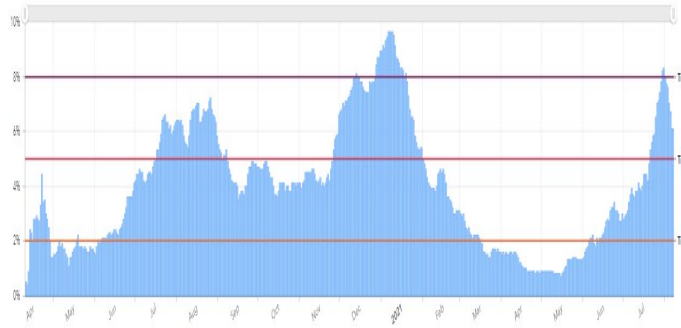


**sonoma county**  
DEPARTMENT OF HEALTH SERVICES

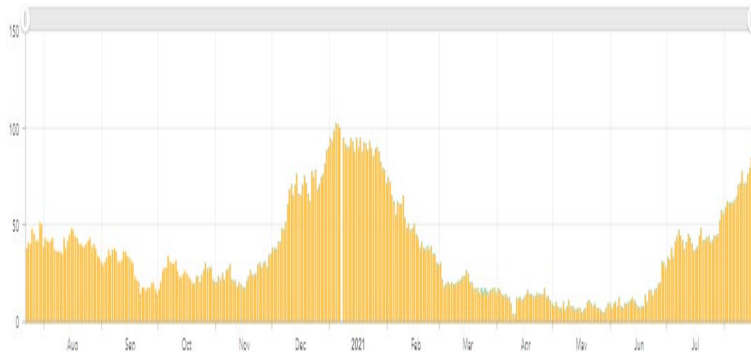
# Overall Countywide Trends



New cases per 100,000 residents per day



Overall test positivity



COVID-19 hospitalizations

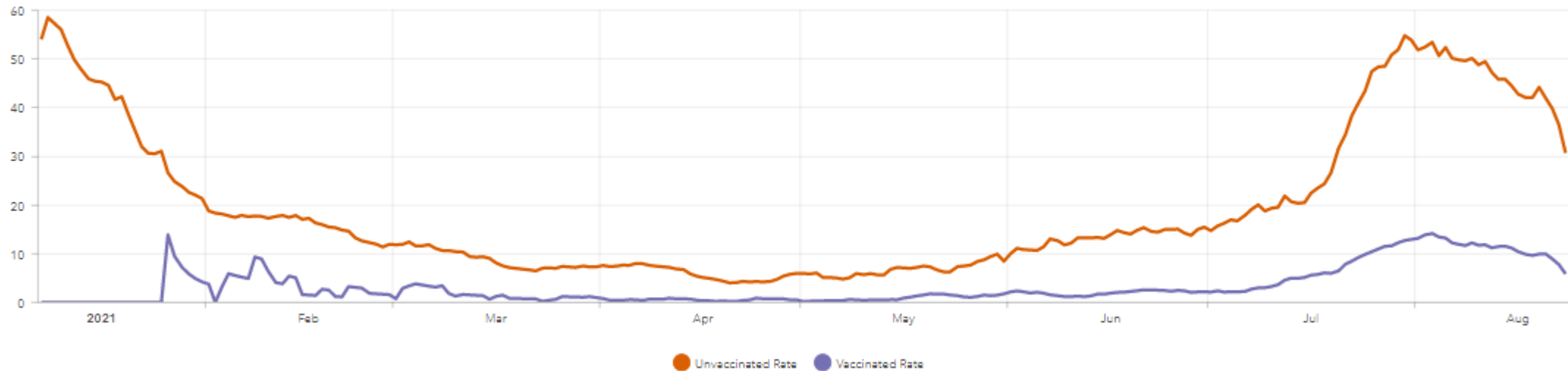


Lowest HPI test positivity

- **Metrics as of 08/31:**
  - **19.5** new cases per 100,000 residents per day
  - **5.1%** overall test positivity
  - **5.8%** test positivity in lowest HPI quartile
- COVID-19 hospitalizations remain high (**68** currently hospitalized)
- **41** people have died from COVID-19 since June 1st

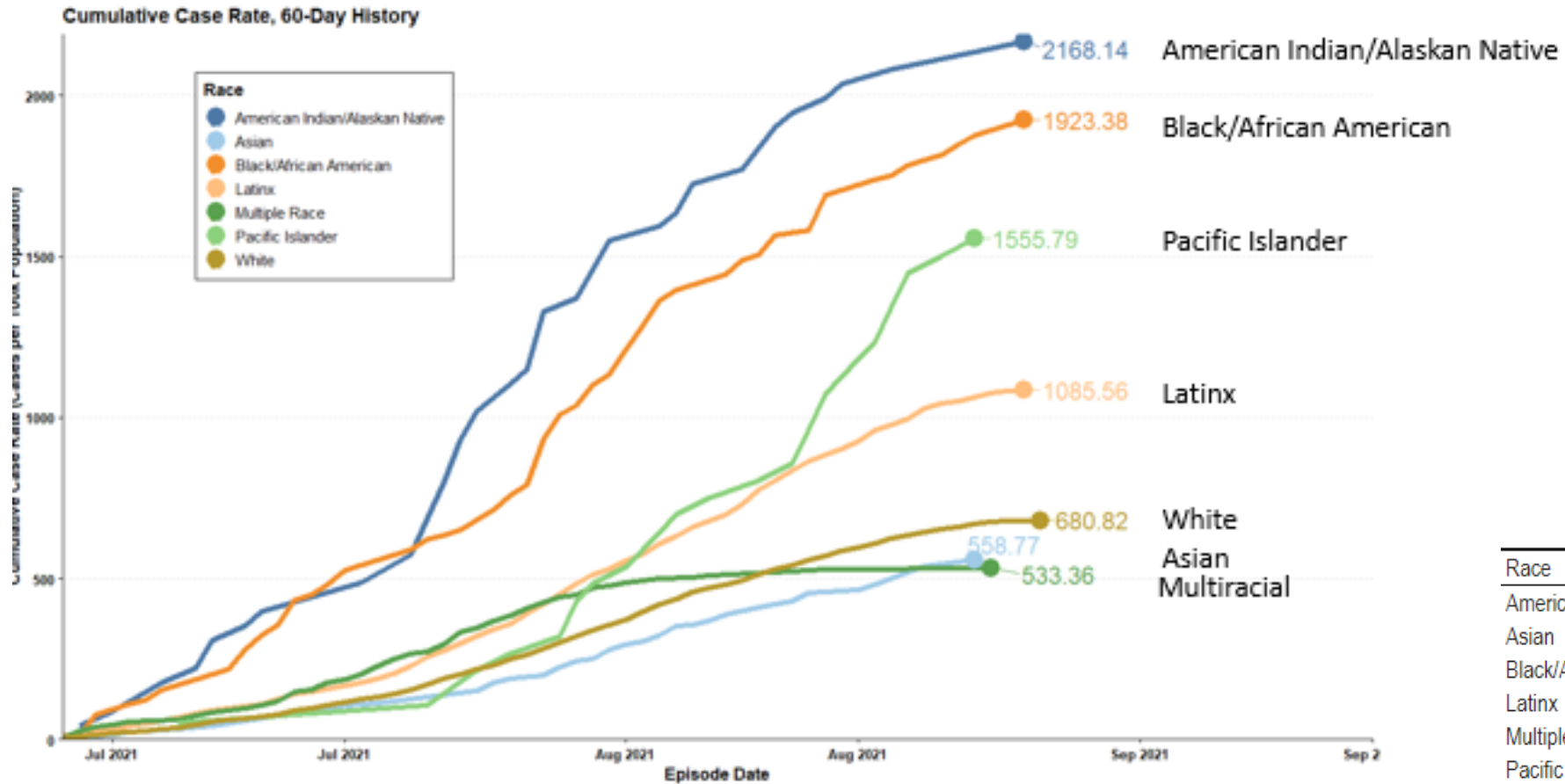
# Sonoma County Case Rate by Vaccination Status (08/31)

New Cases per Day per 100,000 Residents, by Vaccination Status (7 day average, 7 day lag)



- Unvaccinated population: **30.7** new cases per 100,000 per day
- Fully Vaccinated population: **5.9** new cases per 100,000 per day

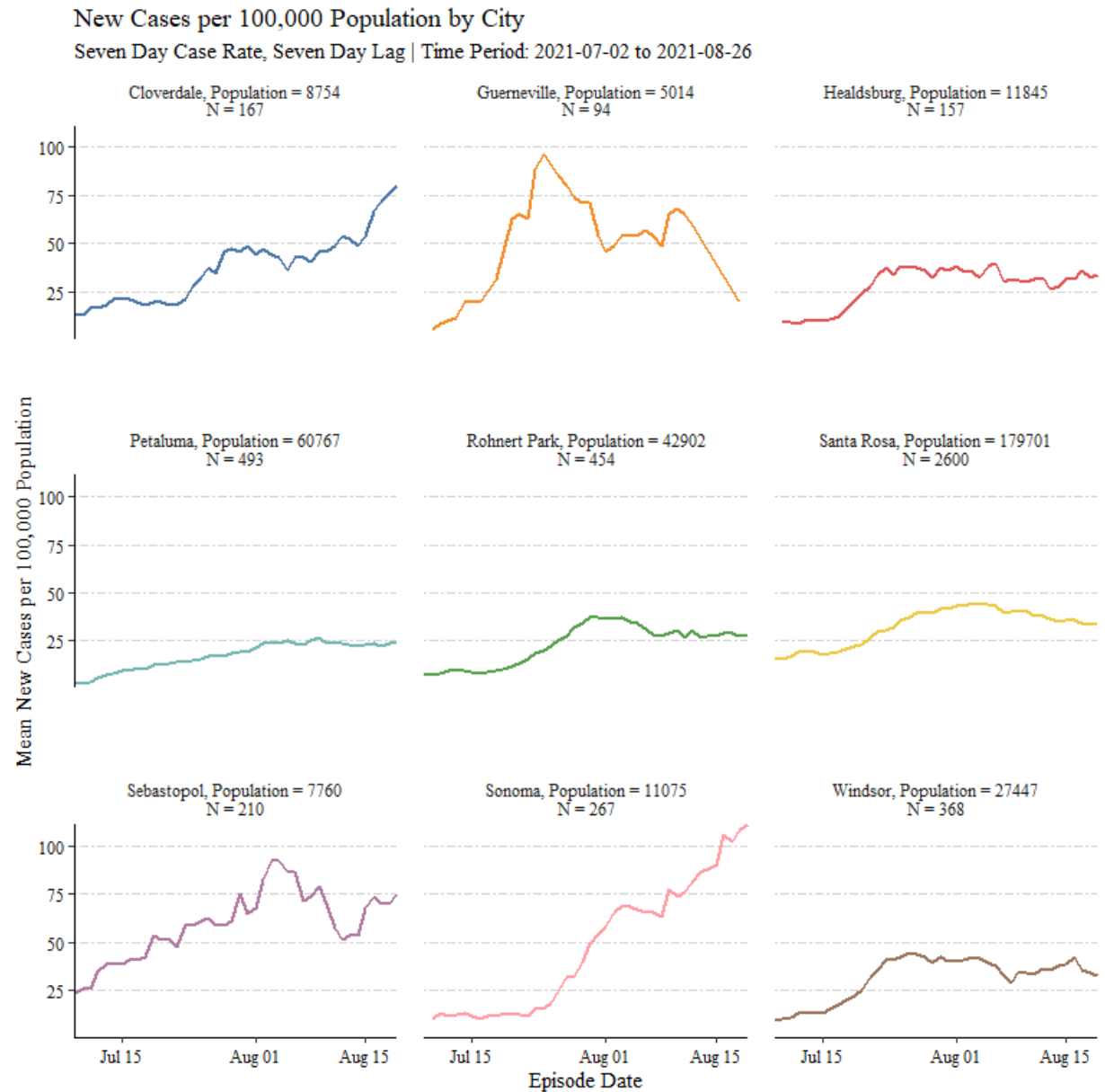
# Case Rate Trends by Racial/Ethnic Group, Past 60 Days



Race	Cumulative
American Indian/Alaskan Native	49
Asian	114
Black/African American	124
Latinx	1465
Multiple Race	94
Pacific Islander	29
White	2111

# Case Rate Trends by City, Past 60 Days

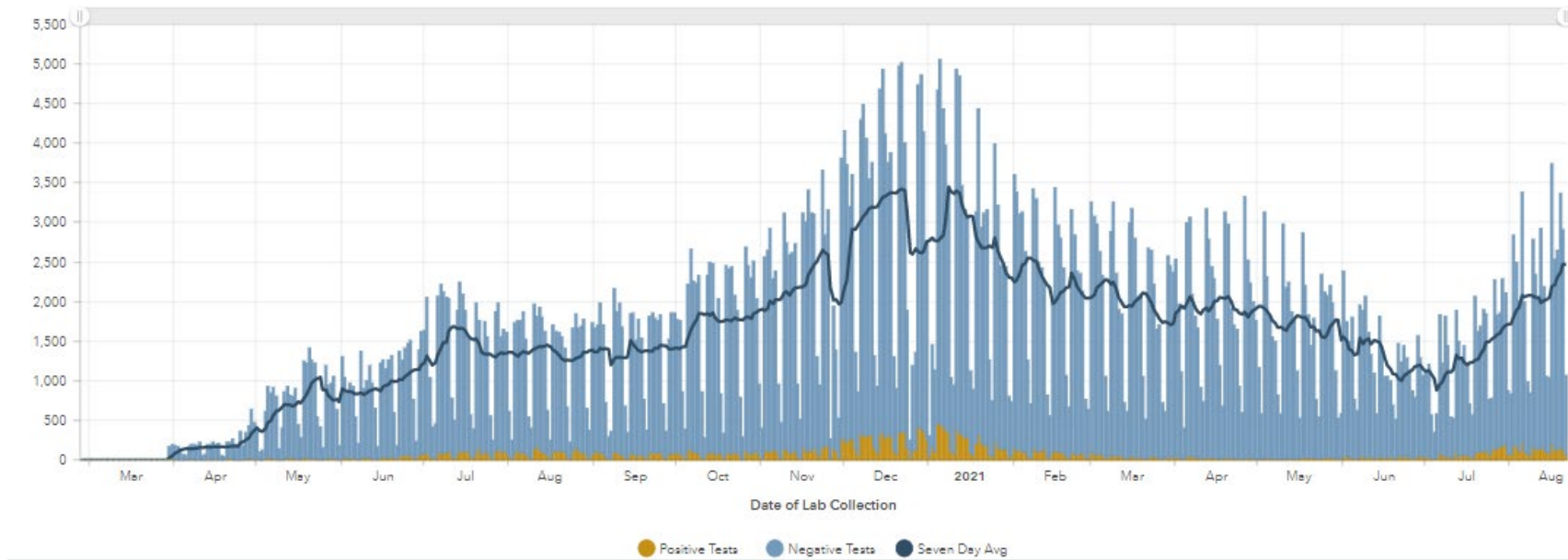
- The greatest number of cases are occurring in Santa Rosa, Petaluma, Rohnert Park, and Windsor
- Relative to population size, the weekly rate of new cases per 100,000 population is trending upward in Cloverdale and Sonoma (includes Sonoma, Sonoma Valley, Boyes Hot Springs, El Verano, Vineburg)



# Total Tests per Day

7 day average

Sonoma County Tests Conducted per Day

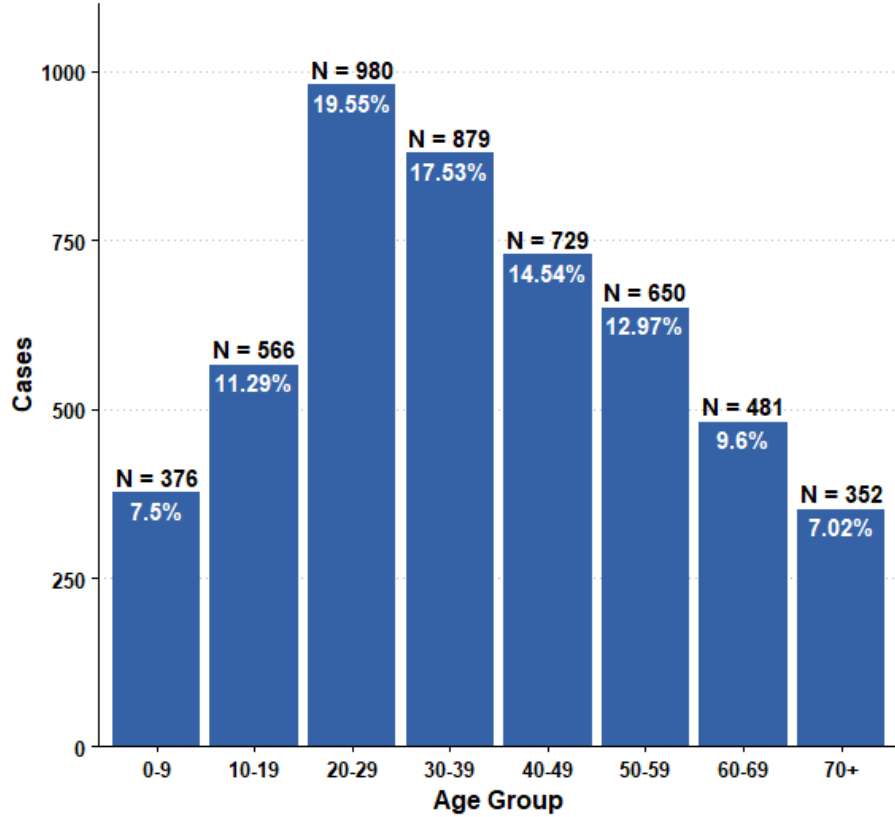


## Testing has increased by 88% in past month

- Current testing volume: 494.7 tests per 100,000 residents
- Testing has increased for all race/ethnicities, age groups and geographies

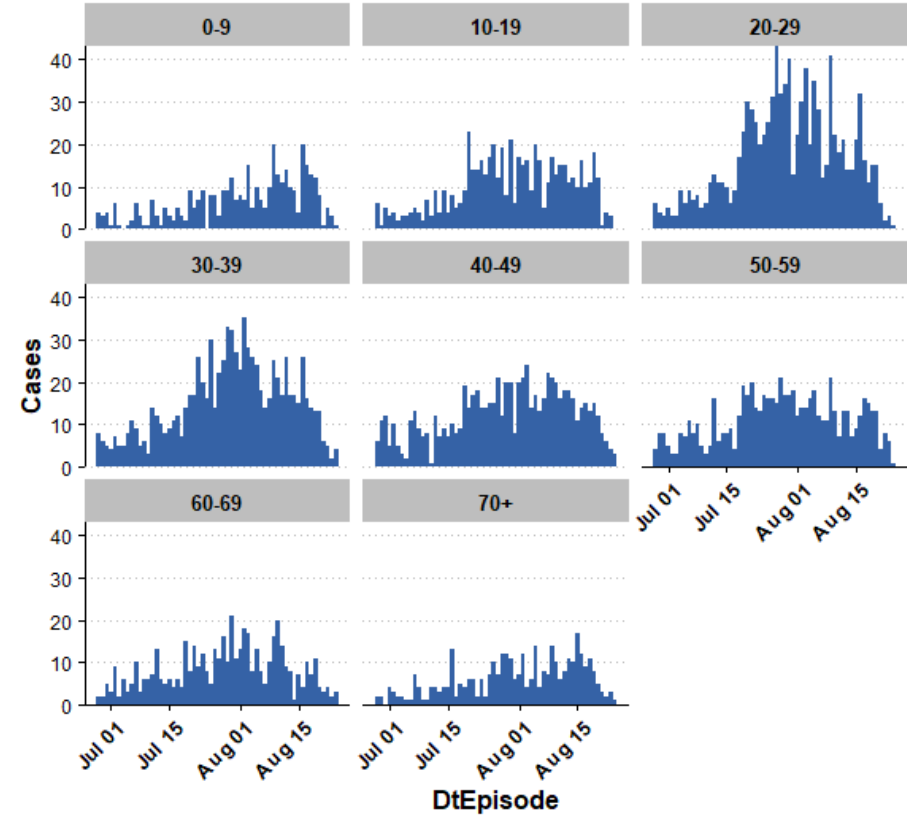
### Cumulative Cases by Age Group

Date Range: 2021-06-28 through 2021-08-24



### Epidemiological Curve of Cases by Age Group

Date Range: 2021-06-28 through 2021-08-24



# Fall 2021 COVID-19 School Cases

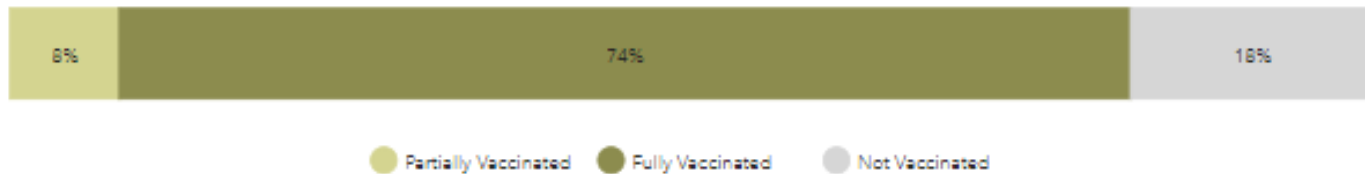
- Since opening for fall instruction, there have been **106** school related cases (excludes sports only cases)
  - **65** elementary school cases
  - **28** high school cases
  - **12** middle school cases
  - **<5** cases in special education schools
- This total includes 90 student cases and 16 staff cases
- 10 of these cases were linked to on-campus transmission



# Vaccine Administration

**659,353 doses administered (as of 08/31)**

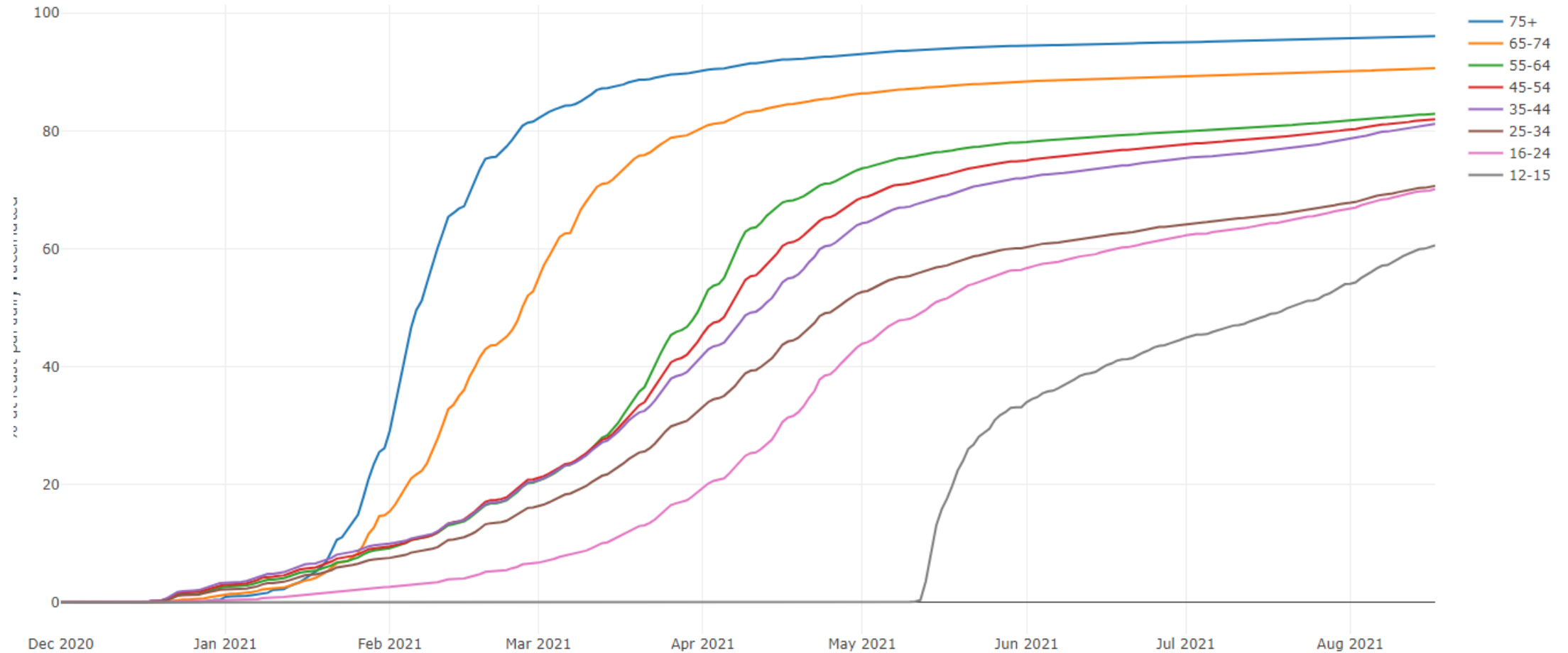
Percent Population 12+ Vaccinated



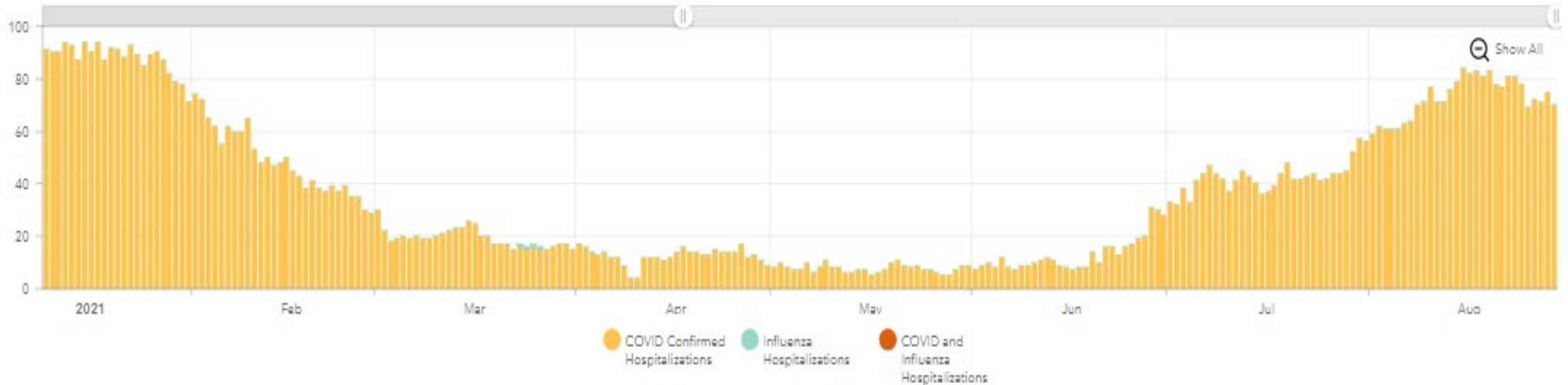
**Residents partially vaccinated:  
34,285**  
**Residents fully vaccinated:  
320,143**

**82% of the Sonoma County population aged 12+ is at least partially vaccinated (74% fully vaccinated; 8% partially vaccinated)**

# Trends in Vaccination by Age Group



# Hospitalizations

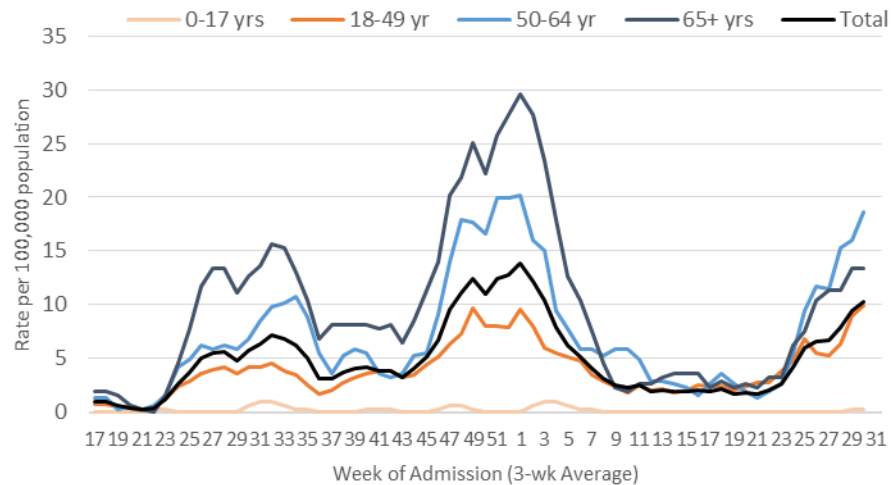


- **68** patients hospitalized with COVID-19 (**19** in the ICU) as of August 30<sup>th</sup>
  - Dual capacity strain of COVID patients and patients admitted due to deferred care
  - 43% of ICU patients are COVID positive

# Trends in Age of Hospitalized Patients

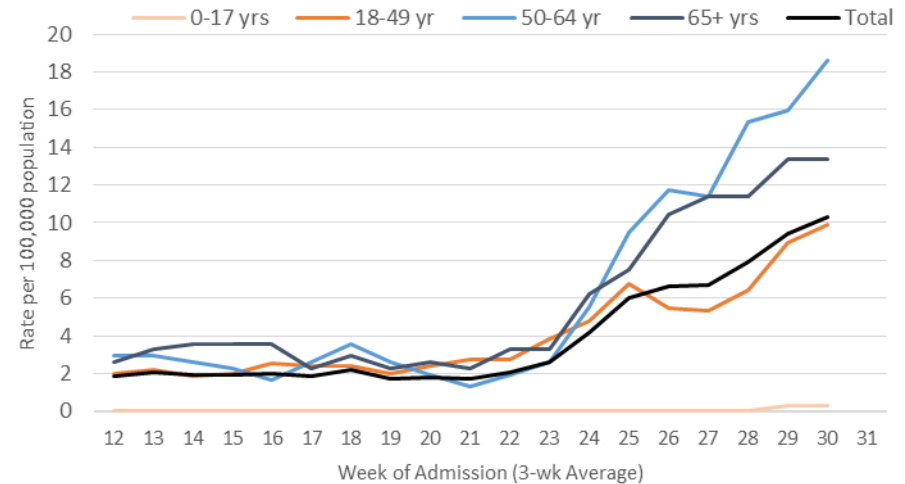
## Over Course of Pandemic

Hospitalization Rates by Age Group  
Sonoma County, 3-week rolling average, 2020-2021



## Since April 2021

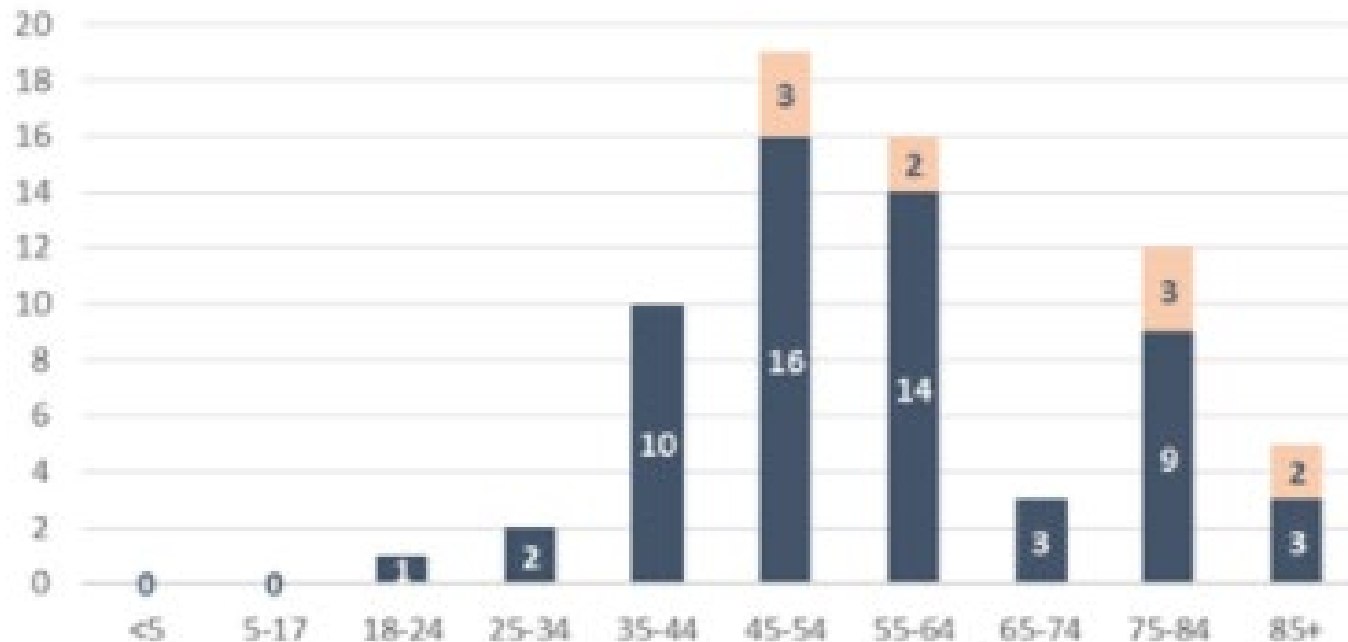
Hospitalization Rates by Age Group  
Sonoma County, 3-week rolling average, April - June 2021



While the 65+ age group accounted for the majority of hospitalizations throughout most of the pandemic, increases in hospitalizations are now being observed among the 50-64 year old and 18-49 year old age groups

# Snapshot of Current Hospitalizations

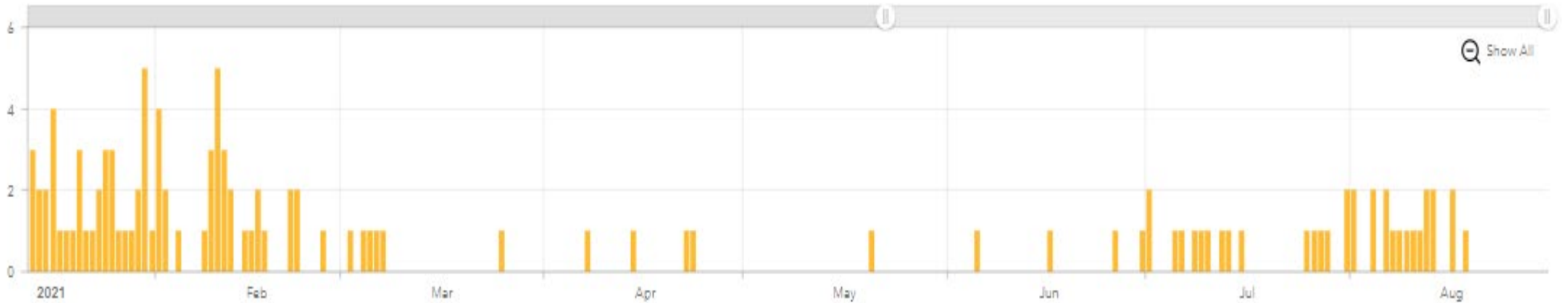
Current Hospitalizations by Vaccination Status  
Sonoma County, 8.27.2021



- Majority of hospitalizations remain among unvaccinated
- To date, all persons who are fully vaccinated and hospitalized have been older and/or had serious underlying conditions (organ transplants, COPD, etc.)

# Deaths

Timeline of COVID-19 Deaths



- Increased numbers of COVID-19 deaths have been observed since June, with 41 deaths reported since June 1st
- The majority (97%) COVID-19 deaths have been among the unvaccinated with 12 out of 356 deaths occurring among the fully vaccinated

# Health Orders and Policies

- **Sonoma County Indoor Masking Health Order (Effective August 3, 2021)**
- **CDPH High Risk Settings Vaccine Verification Order (Compliance by August 23, 2021)**
  - Vaccination verification as well as masking and testing requirements for unvaccinated staff in acute health care facilities, congregate settings (includes jail and homeless shelters) and other health care settings
- **Sonoma County expansion of CDPH Health Order (Effective September 24, 2021)**
  - Vaccination verification and masking and testing requirements for unvaccinated staff in Fire/Law/EMS and temporary disaster shelter workers.
- **County of Sonoma Employee Policy (Effective September 24, 2021)**
  - requires employees to submit verification of full vaccination and if not vaccinated, submit proof of a negative COVID-19 test weekly
- **Recommendation to all Sonoma County employers (released August 9, 2021)**
  - Recommends employers implement vaccine verification and routine testing of unvaccinated workers.

# CDPH Health Orders

- **Health Care worker vaccination mandate (Compliance by Sept 30, 2021)**
  - Hard mandate. All workers in certain healthcare facilities must be vaccinated unless there is a Qualified Medical Exception or Religious Belief.
- **K-12 staff and volunteers (Compliance by September 24, 2021 locally)**
  - Vaccination verification as well as masking and testing requirements for unvaccinated K-12 teachers
- **Requirements for Visitors in Acute Health Care and Long-Term Care Settings (Effective August 11, 2021)**
  - Visitors of hospitals, SNFs, ICFs must show proof of vaccination status or negative test taken 72 hours before entry inside. Exception for emergency critical care or end of life visits.