



VISION ZERO IMPLEMENTATION PLAN UPDATE

City Council Meeting
August 6, 2024

Dan Hennessey, Director
Transportation and Public Works

OUTLINE

- Sonoma County Vision Zero Action Plan
- Santa Rosa Implementation Plan
- Past Council Action
- Current TPW Efforts
- Further Action

Sonoma County Vision Zero Action Plan (SCVZAP)

- Process launched in October 2019
- SCTA partnered with Department of Health Services
- Advisory Committee with all County jurisdictions
- Goal – Eliminate traffic deaths and severe injuries in Sonoma County by 2030

SCVZAP – Crash Data

- Centered on data-driven approach
- Only includes reported crashes with injuries
- Data by year, severity, day of week, time of day, travel mode, crash factor, weather, etc.
- SCTA maintains dashboard from state database (SWITRS)

SCVZAP – Data Dashboard



Welcome to the Sonoma County Vision Zero Data Dashboard.

Using this dashboard, you can visualize different trends and cross-sections in crash data. Click on the control panel below, toggle one of the charts, or select an area on the map. Crashes from 2012-2023 are shown by default, but specific years can be selected below.

Read about the Dashboard and Sonoma County crash trends here: <https://arcg.is/vjCeK>

Jurisdiction
All Jurisdictions

Crash Date
No date selected

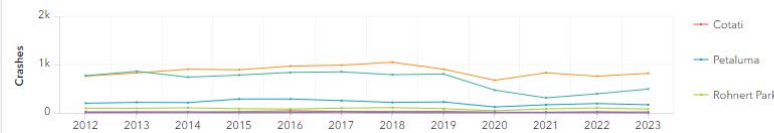
Year

All Years	2012	2013		
2014	2015	2016	2017	
2018	2019	2020	2021	
2022	2023			

Crash data obtained from TIMS is provided by SWITRS and processed by SafeTrec. Most recent data (2022 & 2023) is provisional. Additional detail about the fields in SWITRS can be found here: <https://tims.berkeley.edu/help/SWITRS.php#CoDebook>.

© 2020 California Department of Transportation and Sonoma County Transportation Authority. All Rights Reserved.

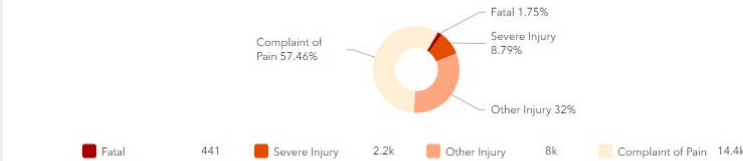
Year and Jurisdiction



Last update: 16 seconds ago

Crashes by Jurisdiction | Crashes over Time | Month of Year | Day of Week | Time of Day

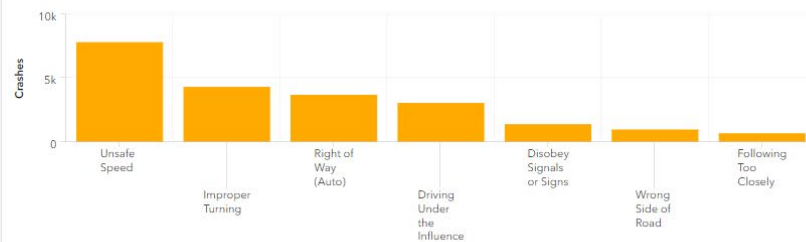
Crashes by Severity



Last update: 16 seconds ago

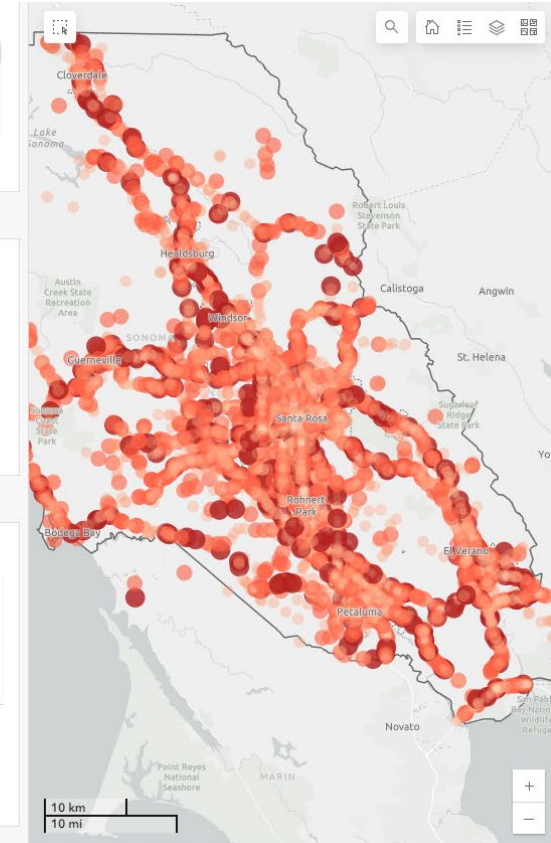
Crashes by Severity | Injuries by Severity | Crashes by Mode | Fatalities by Mode

Violation Category



Last update: 16 seconds ago

Top Crash Factors | Vehicle Crash Type | Speed | Volume | Weather | Lighting



City of Santa Rosa, California State Parks, Esri, TomTom, Garmin, SafeGraph, ... Powered by Esri

SCVZAP – Crash Factors

Figure 7: Top Crash Factors for All Crashes (2016-2020)

1. Unsafe Speed



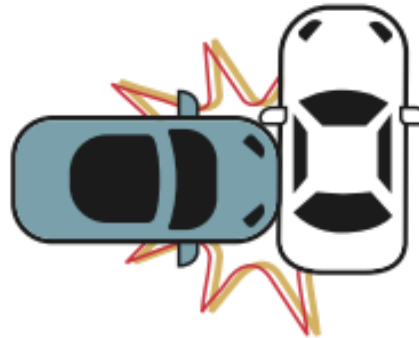
31%
of Crashes

2. Unsafe Turns



16%
of Crashes

3. Right of Way



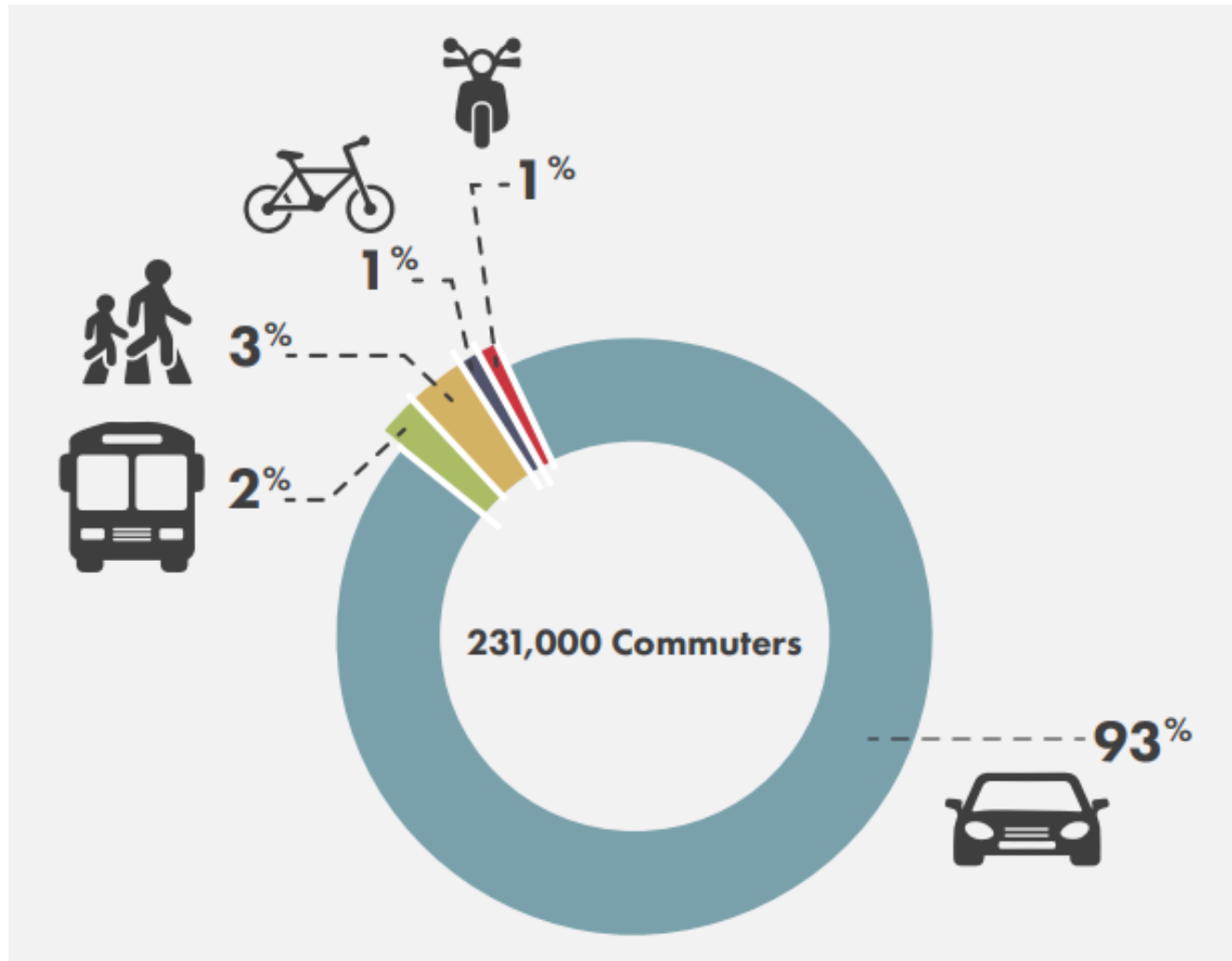
15%
of Crashes

4. Impaired Driving

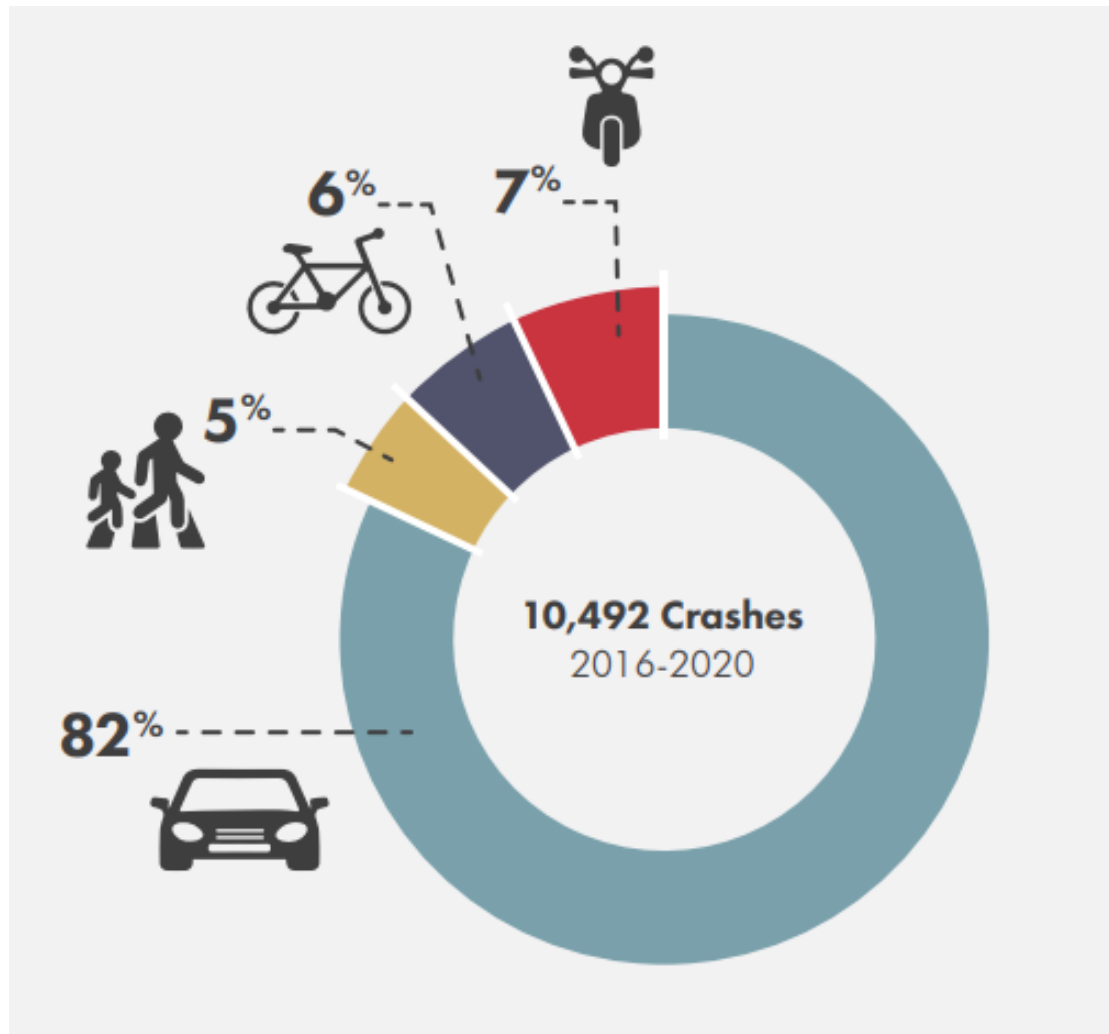


11%
of Crashes

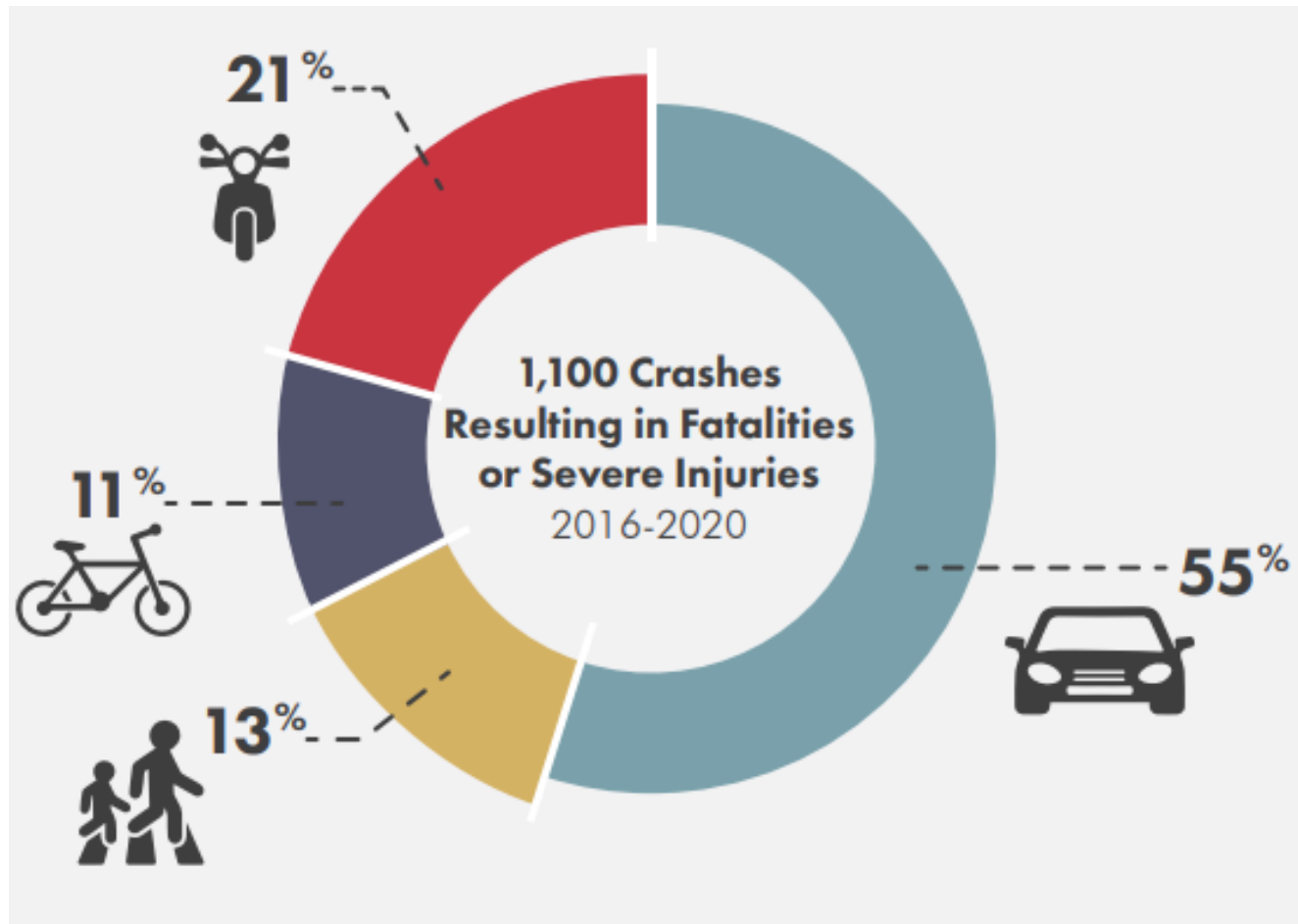
SCVZAP – Crash Data by Mode



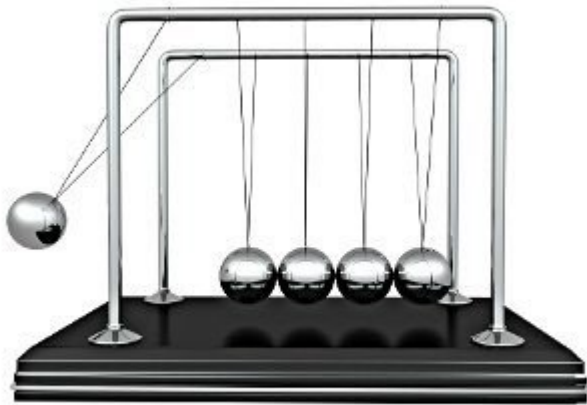
SCVZAP – Crash Data by Mode



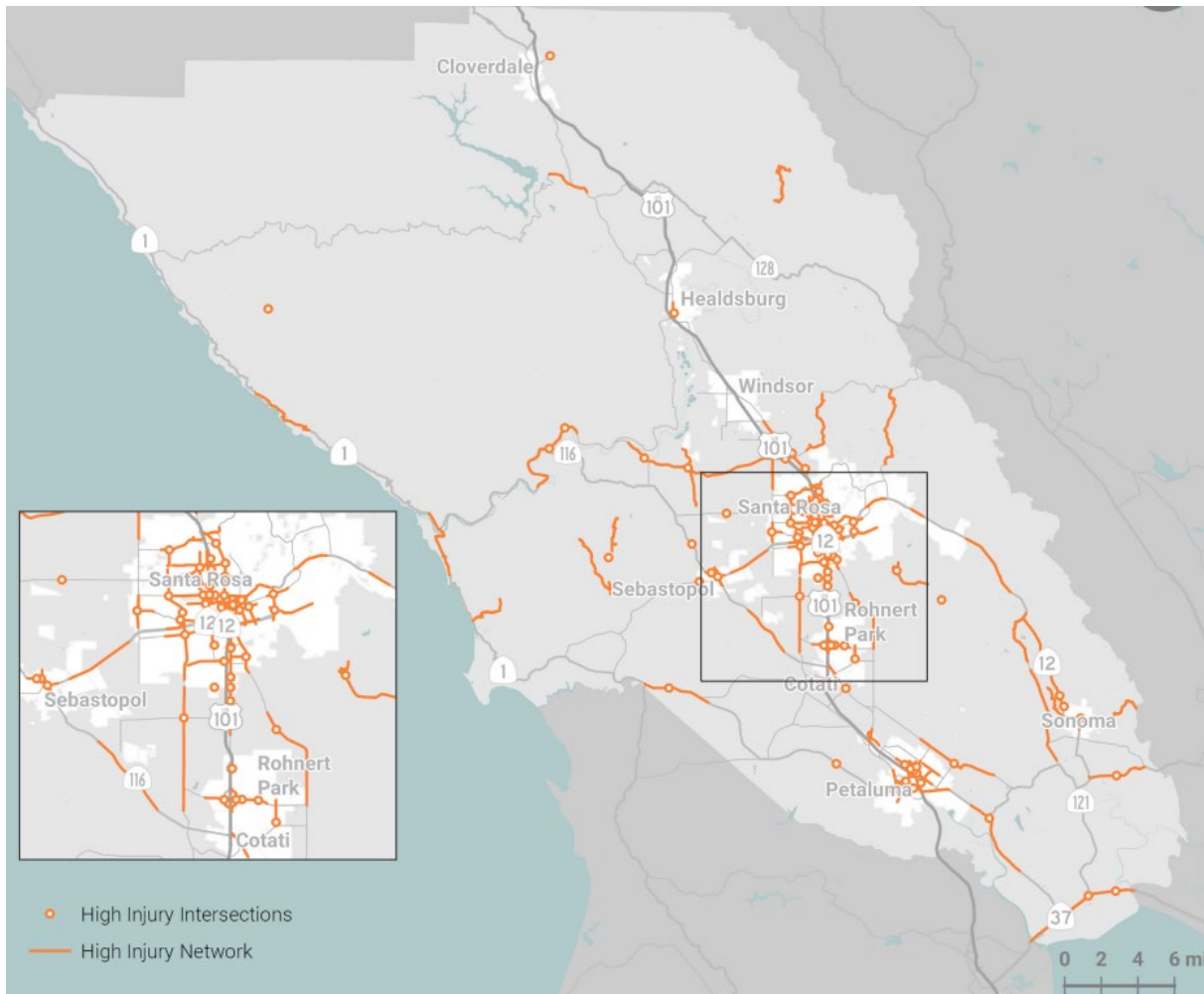
SCVZAP – Crash Data by Mode



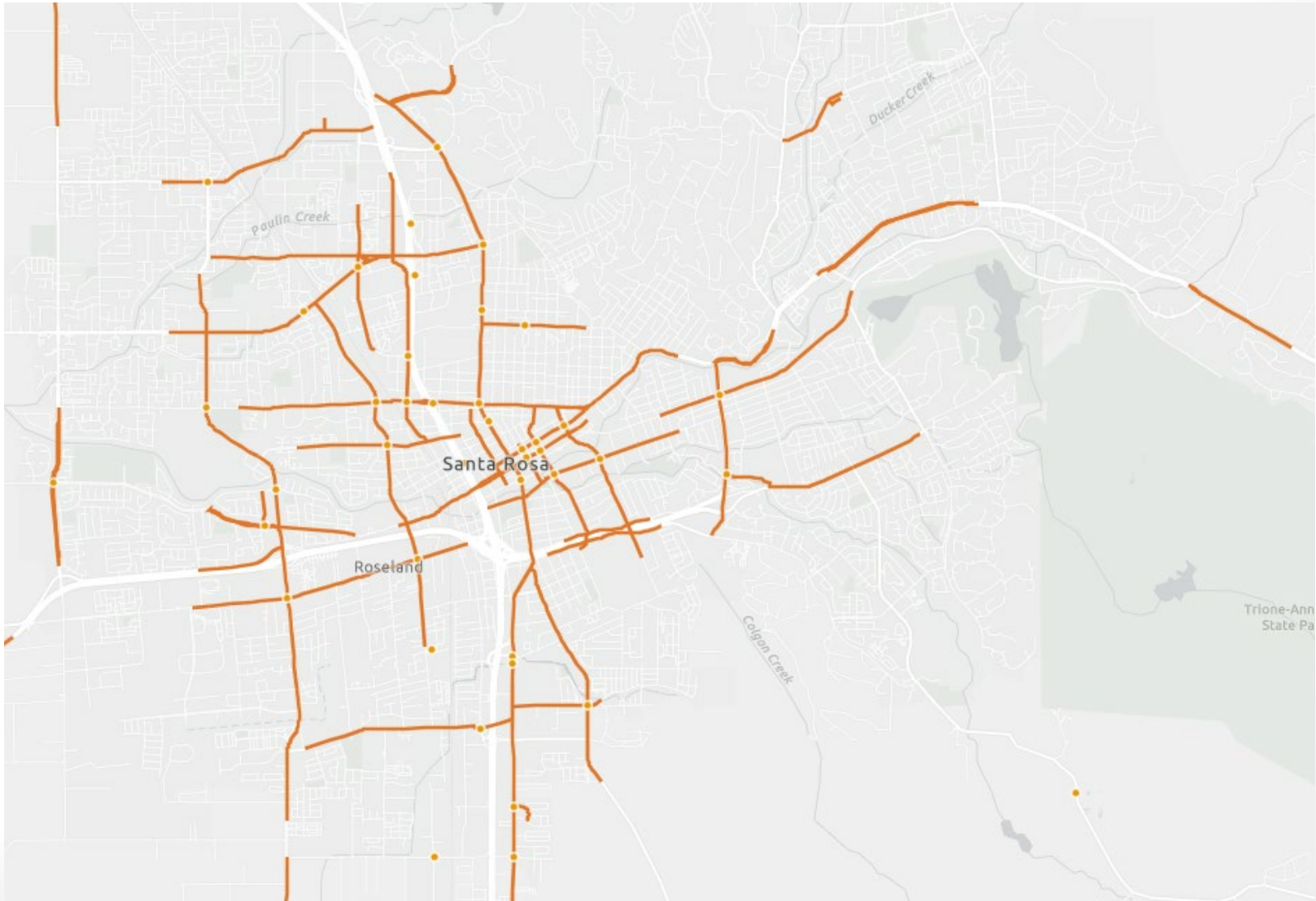
Kinetic Energy Transfer



SCVZAP – Hot Spots/High-Injury Network (HIN)

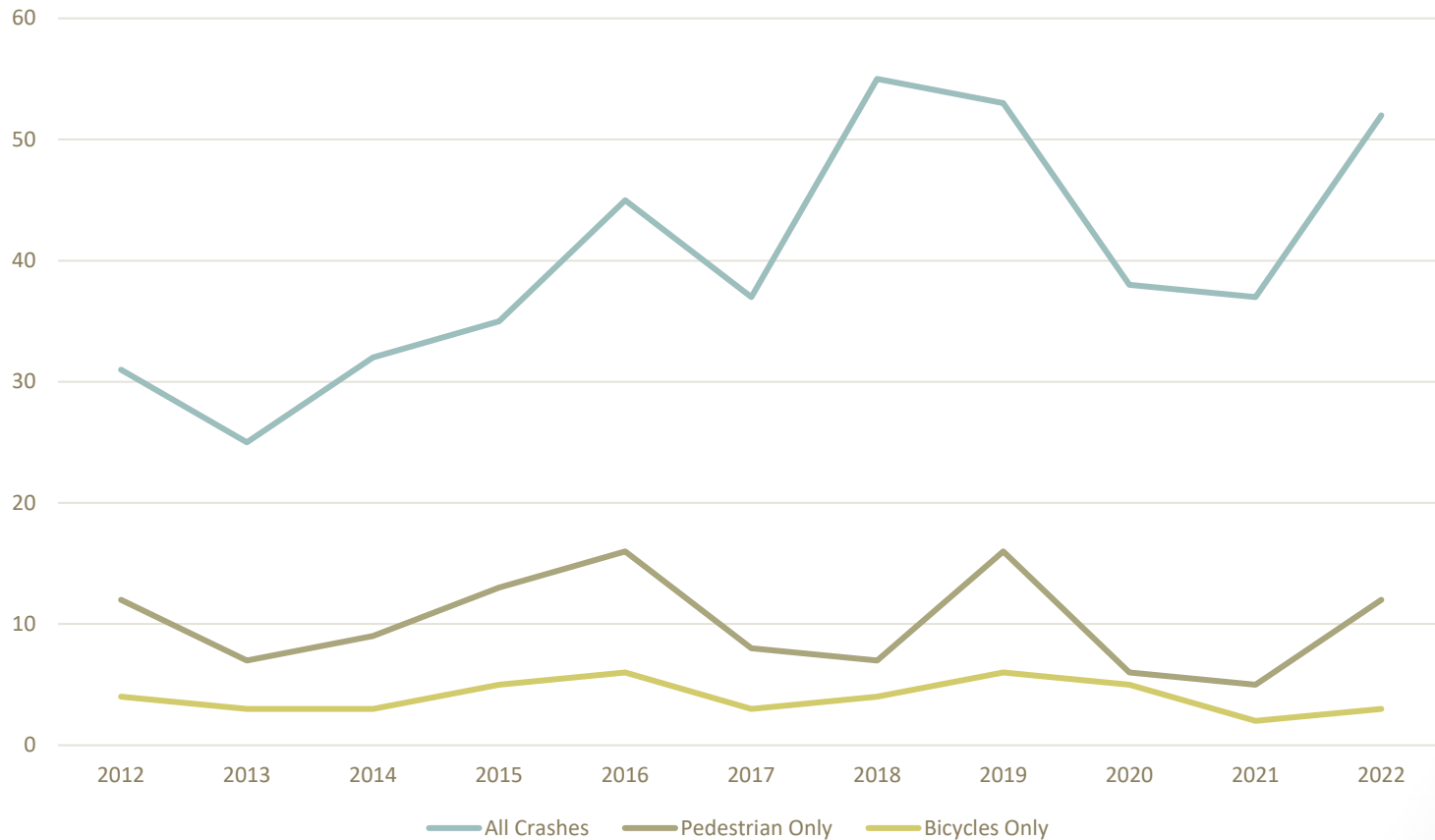


SCVZAP – HIN



SCVZAP – Crash Statistics

Fatal + Serious Injury Crashes on Local Streets

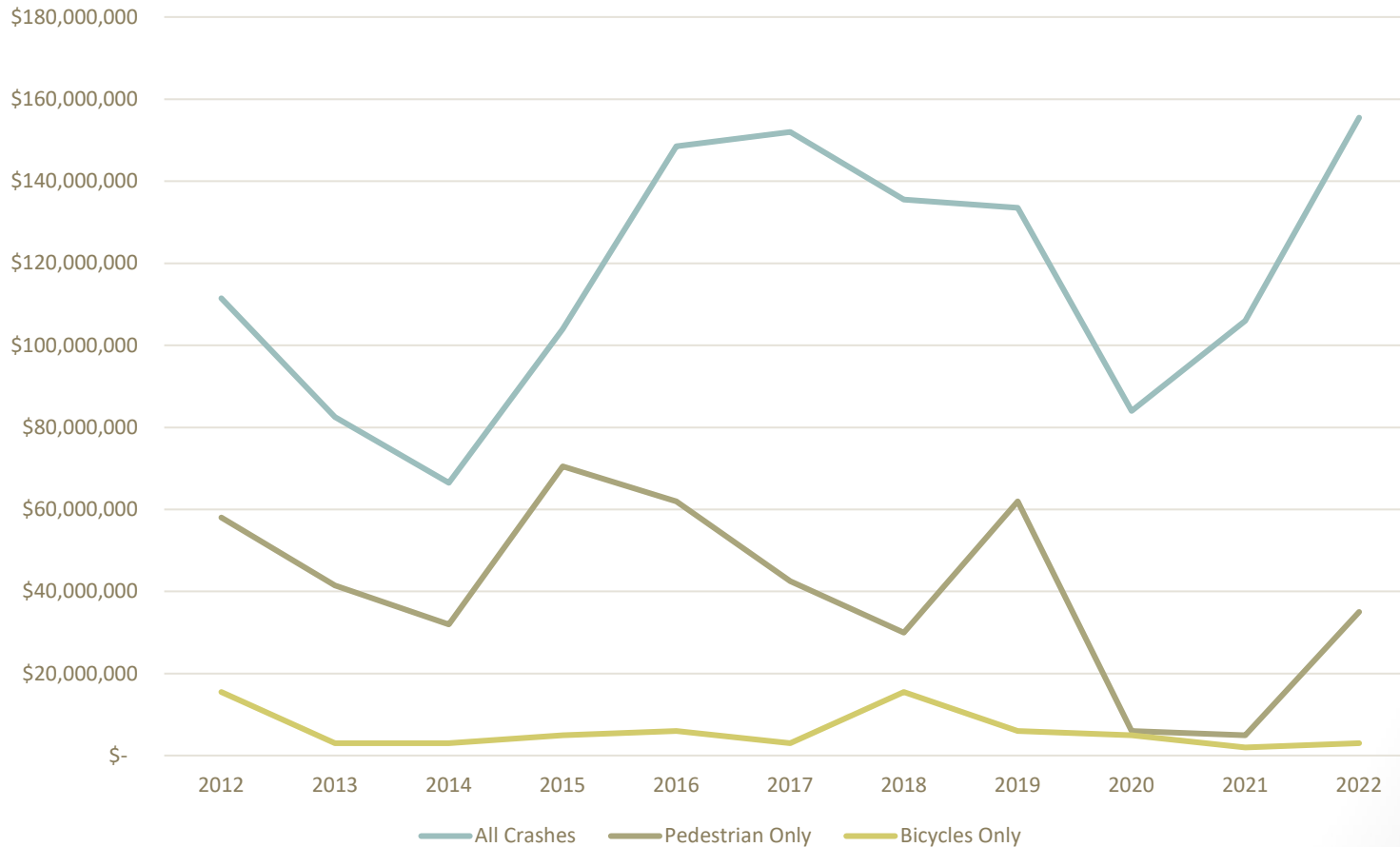


Crash Comprehensive Cost

- Emergency services
- Medical services
- Productivity loss
- Insurance administration
- Legal costs
- Congestion impacts
- Property damage
- Quality of life costs

SCVZAP – Crash Statistics

Comprehensive Cost of Fatal + Serious Injury Crashes on Local Streets



SCVZAP – Equity

- 89% of Sonoma County residents spend at least 45% of income on housing and transportation costs (average – 57%)
- HIN is overrepresented in EPCs (9% of roadway mileage, 26% of fatal/severe crashes)

Figure 13: Racial Disparities among Children Killed while Walking

CHILDREN KILLED WHILE WALKING

AFRICAN AMERICAN 2X AS LIKELY

LATINO 1.4X MORE LIKELY

WHITE

SCVZAP – Goals/Actions

- **Create Safer Speeds**
- Eliminate Impaired Driving
- **Create a Culture of Safety**
- **Build and Maintain Safe Streets for All**
- Make Vehicles Safer and **Reduce Private Vehicle Use**
- Improve Data for Effective Decision Making

Santa Rosa Vision Zero Implementation Plan

- Create Safer Speeds (5)
- Eliminate Impaired Driving (5)
- Create a Culture of Safety (6)
- Build and Maintain Safe Streets for All (20)
- Make Vehicles Safer and Reduce Private Vehicle Use (6)
- Improve Data for Effective Decision Making (5)

SRVZIP – Create Safer Speeds

- **Assembly Bill 43**
 - Speed limits of 15 or 20 mph are now legal and enforceable
 - Increases authority of local jurisdictions adjacent to business districts
 - Allows reduction of speed limits by an additional 5 mph from previous allowances
 - Began June 30, 2024
- **Implement low-cost methods to reduce speeds**
 - Prioritize High-Injury Network

SRVZIP – Eliminate Impaired Driving

- Focuses on individual behaviors
- Support Police Department
- Engage with businesses
- Promote ride share services
- Expand transit service

SRVZIP – Create a Culture of Safety

- Support Safe Routes to School Program
- Work with media partners
- Engage with Equity Priority Communities
- Promote educational campaigns

SRVZIP – Build and Maintain Safe Streets for All

- Quick build along HIN
- Leading Pedestrian Intervals
- Complete Local Roadway Safety Plans
- Find Funding
- Work with Field Services teams
- Improve ped and bike networks
- Update street design standards
- Work with PD, expand automation

SRVZIP – Make Vehicles Safer and Reduce Private Vehicle Use

- Change land development policies
- Promote scooter and bike share programs
- Incorporate non-vehicle infrastructure into development projects
- Work with major employers
- Make vehicle fleet safer

SRVZIP – Improve Data for Effective Decision Making

- Establish quarterly meetings with PD
- Collect/present accessible data
- Create dashboard

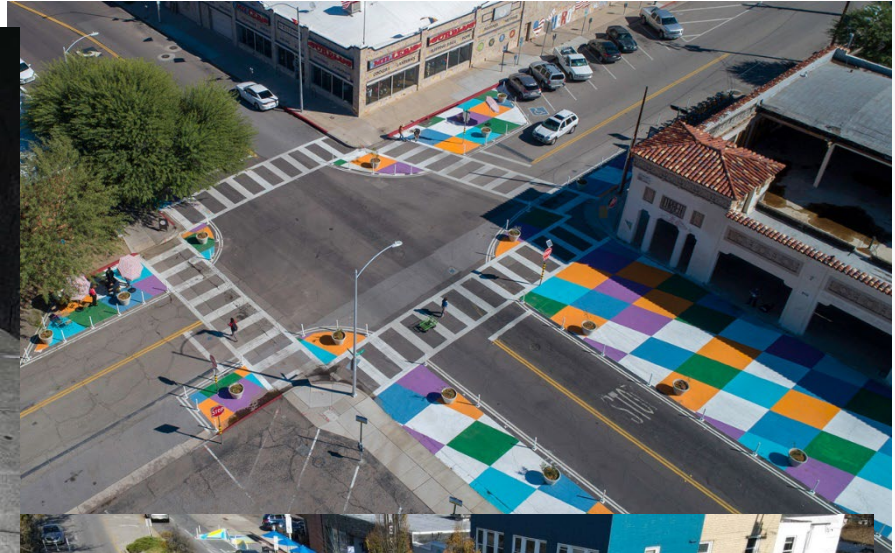
Past City Council Action

- July 26, 2022
- Report Item: Sonoma County Vision Zero Action Plan Background
 - Adopted 7-0
- Report Item: Local Road Safety Plan; Corridor Study and Grant Application
 - Adopted 7-0

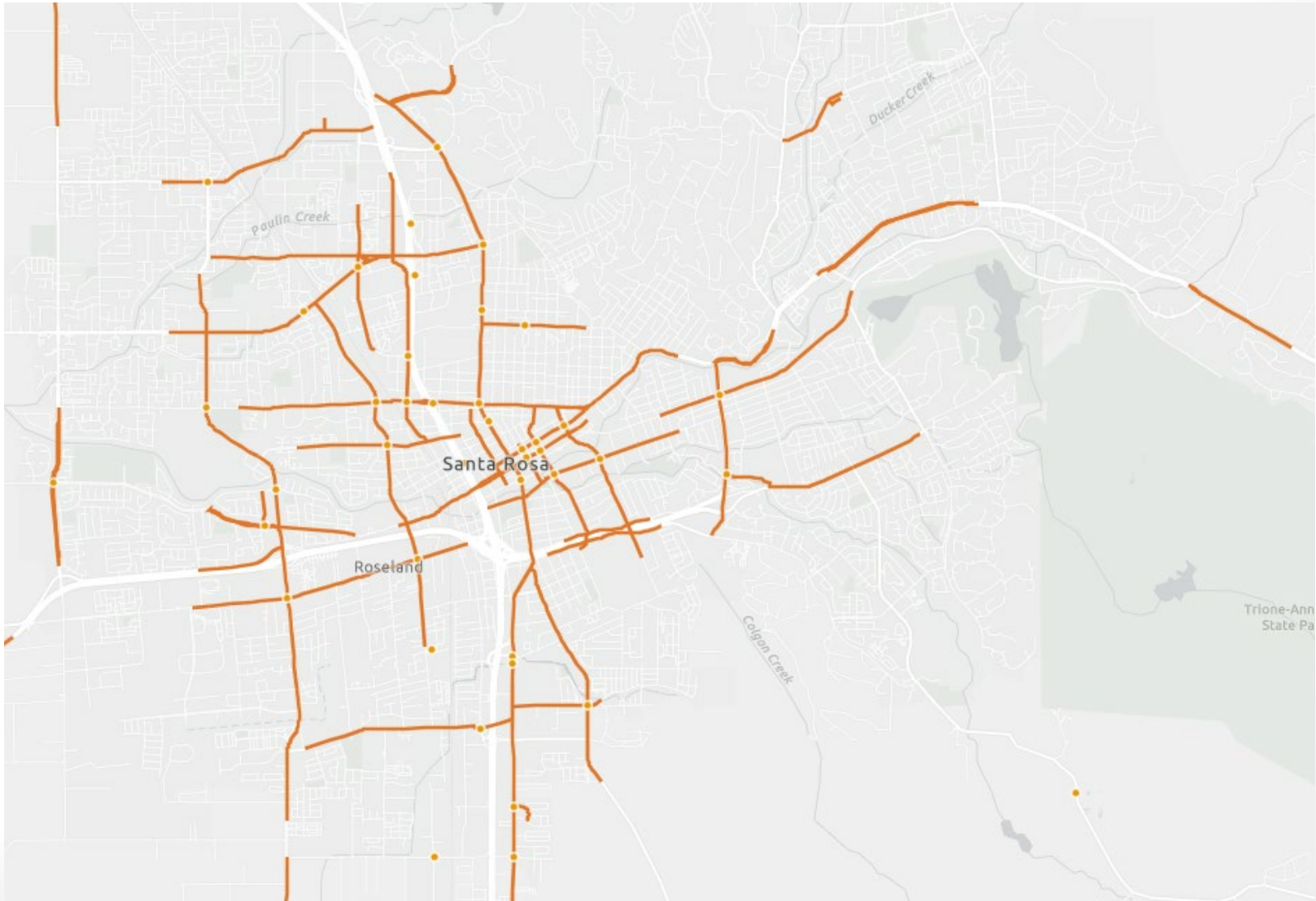
Current TPW Efforts

- AB 43 Speed Limit Reductions
- Cleveland Avenue
- North Dutton Avenue
- Montgomery Village
- SCTA Safe Streets and Roads for All (SS4A)

SS4A Project Types



SS4A Project Locations



Further Action

- Active Transportation Plan
- CIP Prioritization
- Street Design Standards
- Support for SCTA Application