

EXHIBIT "A"
LEGAL DESCRIPTION
 Easement Area

Lying within the City of Santa Rosa, County of Sonoma, State of California and being a portion of Parcel D as shown on the map titled "Fountaingrove II East Unit No.'s 6 and 8" filed in Book 567 of Maps at Pages 33-45, Sonoma County Records, said portion being more particularly described as follows:

Commencing at a found 3" brass disk cast "City of Santa Rosa" in a monument well on the centerline of Park Gardens Drive which bears North 77°36'32" East 99.06 feet from a found 3" brass disk cast "City of Santa Rosa" in a monument well on said centerline; thence along said centerline of Park Gardens Drive, along a curve to the right from which the radius point bears North 12°23'28" East 200.00 feet, through a central angle of 18°58'15", for an arc distance of 66.22 feet; thence leaving said centerline, South 31°21'43" West 29.50 feet to the southerly line of a 6.50 foot wide Public Utility Easement as shown on said map and the POINT OF BEGINNING; thence along said southerly line, along a non-tangent curve to the right from which the radius point bears North 31°21'43" East 229.50 feet, through a central angle of 16°13'08", for an arc distance of 64.96 feet; thence leaving said southerly line, South 29°17'41" West 19.34 feet; thence South 60°42'19" East 21.59 feet; thence South 65°26'33" East 42.12 feet; thence North 31°21'43" East 4.43 feet to the POINT OF BEGINNING.

Containing 695 square feet, more or less.

END OF DESCRIPTION

Basis of Bearings: South 85°41'02" East between City of Santa Rosa Horizontal Control Network Coordinate Monuments G-475 and G-1009.

NAD83 – Zone II – Epoch 2010.00

R-Sheet No.: R-5857

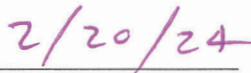
Being a Portion of APN: 173-480-058 & 059

Prepared by City of Santa Rosa



 Walter C. Olawski, PLS 9450





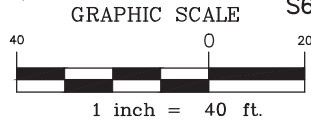
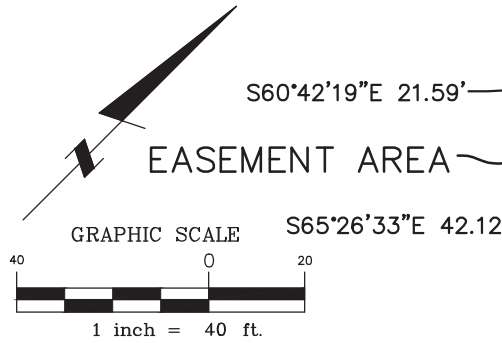
 Date

RINCON RIDGE PARK
& OPEN SPACE

CITY OF SANTA ROSA
A.P.N. 173-480-059
567 MAPS 33-45
Ptn. PARCEL D
OWNERSHIP TRANSFERRED TO
THE CITY OF SANTA ROSA
UNDER RESOLUTION NO. 23223

FOUNTAINGROVE II EAST
UNIT NO.'S 6 AND 8
567 MAPS 33-45

PARCEL D
PUBLIC PARK SITE



LEGEND

- = BRASS DISK IN MONUMENT WELL, SIZE AS NOTED
- A.P.N. = ASSESSOR'S PARCEL NUMBER
- P.U.E. = PUBLIC UTILITY EASEMENT
- R1 = 567 MAPS 33-45

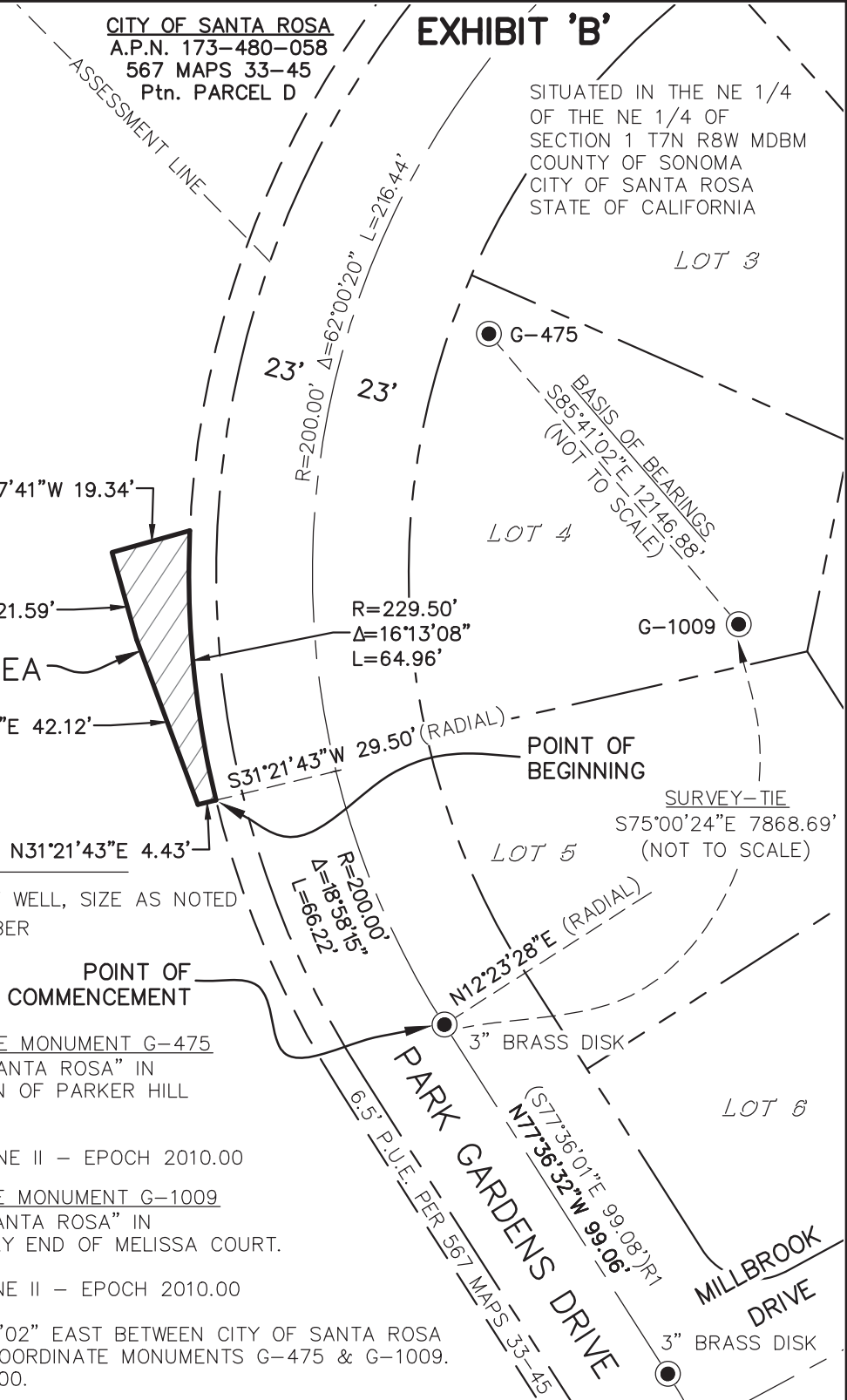
CITY OF SANTA ROSA COORDINATE MONUMENT G-475
2" BRASS DISK CAST "CITY OF SANTA ROSA" IN
MONUMENT WELL AT INTERSECTION OF PARKER HILL
ROAD & STAGECOACH ROAD.
N 1939579.302
E 6359156.111 NAD83 - ZONE II - EPOCH 2010.00

CITY OF SANTA ROSA COORDINATE MONUMENT G-1009
3" BRASS DISK CAST "CITY OF SANTA ROSA" IN
MONUMENT WELL AT THE EASTERLY END OF MELISSA COURT.
N 1938665.127
E 6371268.537 NAD83 - ZONE II - EPOCH 2010.00

BASIS OF BEARINGS: SOUTH 85°41'02" EAST BETWEEN CITY OF SANTA ROSA
HORIZONTAL CONTROL NETWORK COORDINATE MONUMENTS G-475 & G-1009.
NAD83 - ZONE II - EPOCH 2010.00.

EXHIBIT 'B'

SITUATED IN THE NE 1/4
OF THE NE 1/4 OF
SECTION 1 T7N R8W MDBM
COUNTY OF SONOMA
CITY OF SANTA ROSA
STATE OF CALIFORNIA



OWNER AND MAILING ADDRESS	PROPERTY AREAS	CITY OF SANTA ROSA		
CITY OF SANTA ROSA PO BOX 1678 SANTA ROSA CA 95402-1678	ORIGINAL PARCEL: <u>4.94 Acres</u> EASEMENT AREA: <u>695 Sq. Ft.</u>	EASEMENT AREA CITY OF SANTA ROSA TO PG&E		
A.P. No. <u>173-480-058 & 059</u>	CITY ACQUISITION DEED	SCALE: 1"=40'	DATE: 02/20/24	
DOC. No. <u>1997RS567/33</u>	D.N. _____	DWN. WCO CHK. MAC	APPROVED	FILE NO. R-5857