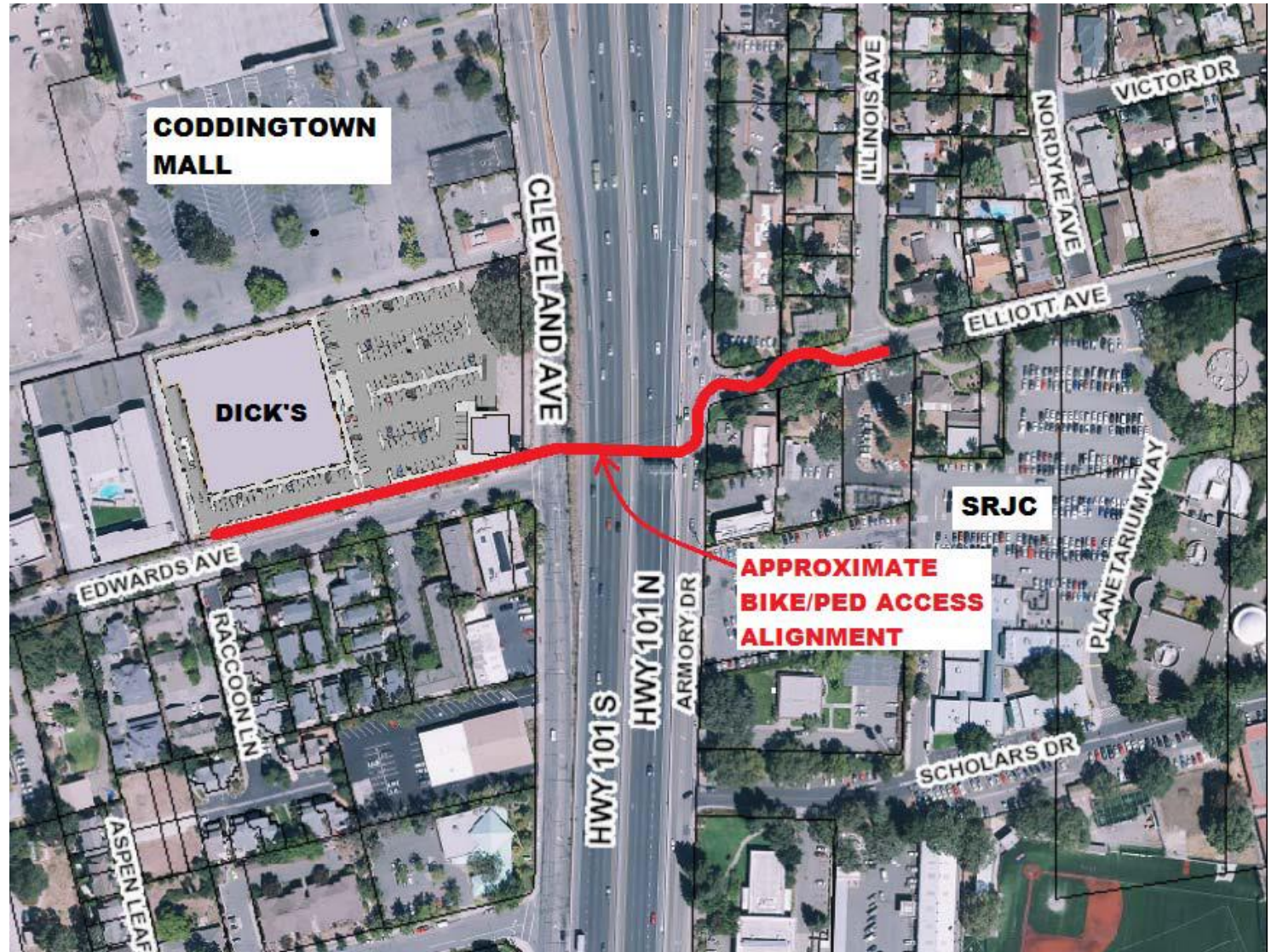




**Santa Rosa Bicycle
and Pedestrian
Bridge -
First Amendment to
Sonoma County
Transportation
Authority (SCTA)
Cooperative
Agreement MI7406**



Background

- The City and SCTA entered into a Coop. Agreement No. M17406 in May 2008 to assist with a feasibility study by Steven Grover & Associates (SGA) for a proposed Bike/Ped Access crossing over Hwy. 101.
- Council Approved the Study on Nov. 30, 2010.
- SGA is currently working with the City and Caltrans on a Project Initiation Document (PID) for the Bike/Ped Bridge due to be completed this year (2015).

Analysis

- Pursuant to the SCTA's 2004 Strategic Plan and Measure M, SCTA will make available up to \$250,000 to develop transportation improvements on bike and pedestrian access across Highway 101. The maximum Measure M contribution is limited to \$250,000 per municipality. \$50,000 has already been authorized for Santa Rosa. This first amendment authorizes the additional \$200,000.



Recommendation

- It is recommended by the Transportation and Public Works Department that the City Council, by resolution, approve the first amendment to Cooperative Agreement M71406 between the Sonoma County Transportation Authority and the City of Santa Rosa making available a total of \$250,000 of Measure M funding for the proposed Bike-Pedestrian Access Across 101 Project.