

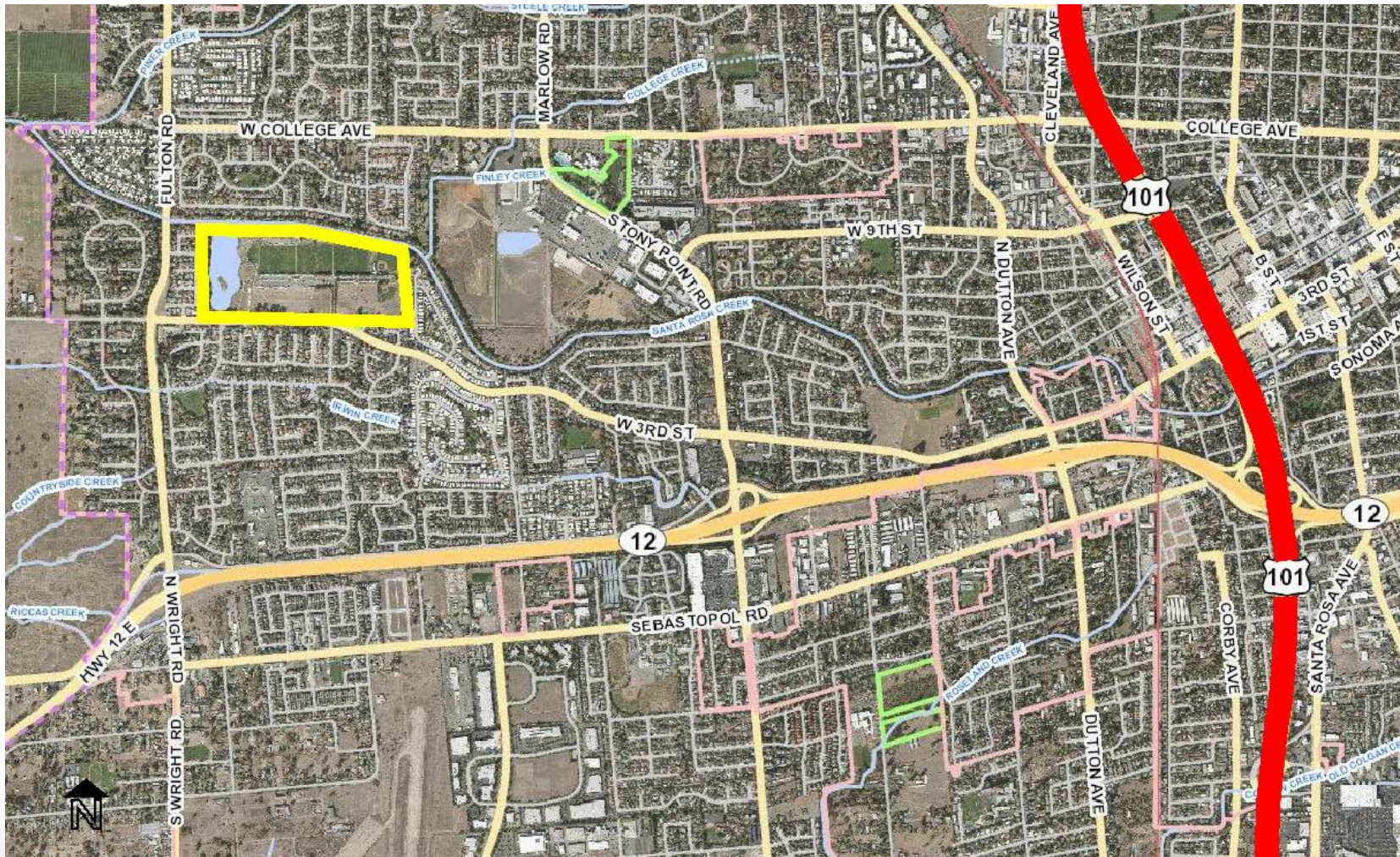


A Place to Play Park Master Plan Amendment

City Council Meeting
November 5, 2019

Jen Santos, Deputy Director, Parks
Transportation and Public Works Department

A Place to Play Park Location Map



Current Master Plan

A Place to Play Park



A PLACE TO PLAY MASTER PLAN

JULY 2015

Proposed Master Plan Amendment A Place to Play Park

THREE HYDRATION STATIONS
(LOCATIONS TBD)

PUMP STATION

PICNIC AREAS



ENTRY GATE

EMERGENCY WELL
& PUMP STATION

ENTRY GATE

BASKETBALL COURT

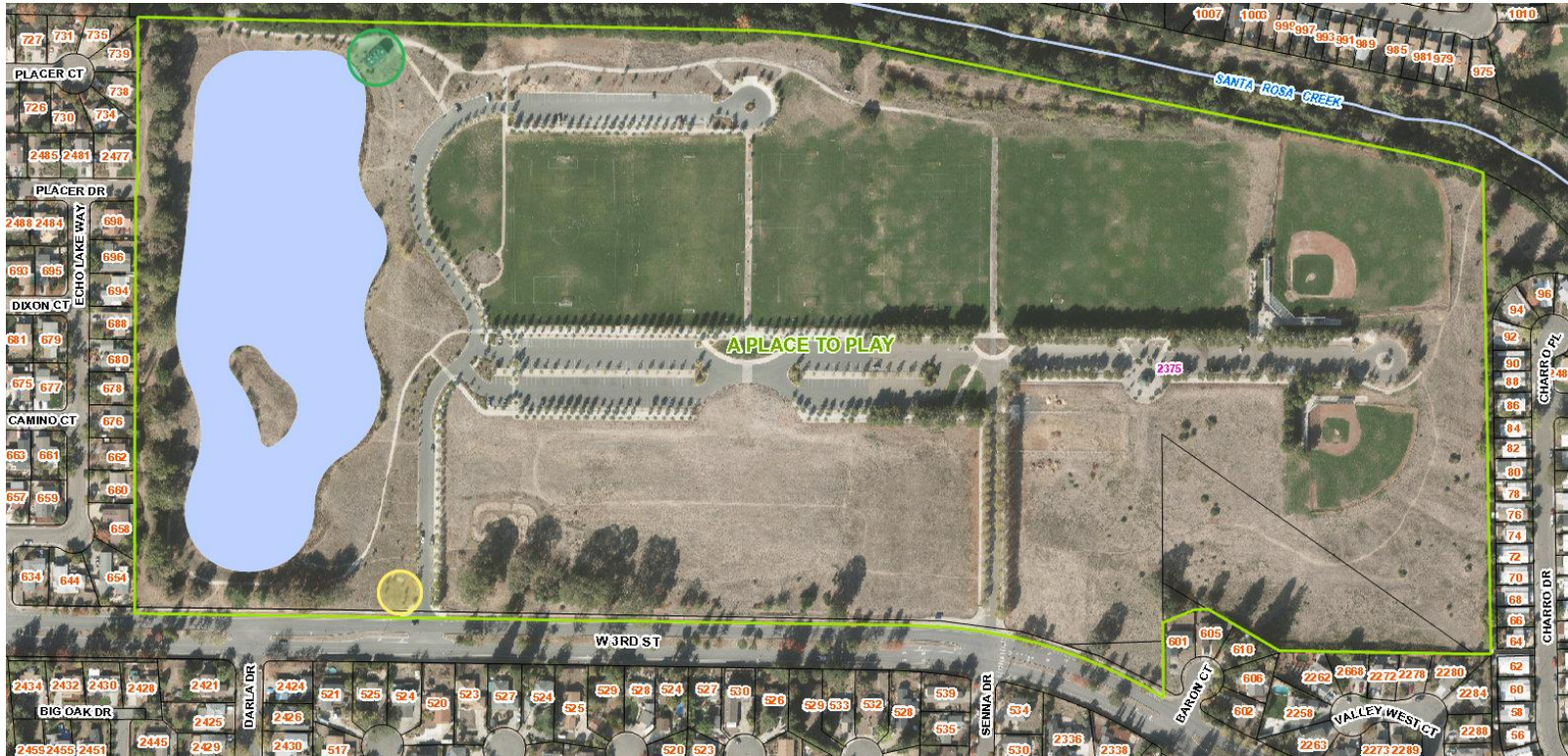
PICNIC AREAS



A PLACE TO PLAY MASTER PLAN

SEPTEMBER 2017

A Place to Play Park Aerial



= Test Well installed in 2006



= Recycled Water Pump Station installed in 2008

A Place to Play Park

Existing Conditions Site Photos



Existing Test Well installed in 2006



Existing Recycled Water Pump Station installed in 2008

A Place to Play Master Plan Amendment

- Board of Community Services - April 26, 2017, input included adding hydration stations
- Community outreach & feedback May 1 – 15, 2017, posted on-line. Links shared through Department newsletter & website, City home page, Facebook, Nextdoor.com and, Signs posted on-site.
22 comments received, including hydration stations, basketball court, picnic areas, entry gates, skate park, one comment to locate pump station outside the park
- Board of Community Services, May 24, 2017, recommended approval of hydration stations, picnic areas, basketball court, entry gates, emergency ground water well and pump station and irrigation pump station
- Community Meeting September 21, 2019, community check-in reaffirmed proposed amendments as well as identified future amendments and comments regarding park maintenance

Proposed Master Plan Amendment

A Place to Play Park



Existing Conditions



Proposed emergency ground water well and pump

Recommendation

It is recommended by the Transportation and Public Works Department, Parks Division and the Water Department that the Council, by resolution, adopt the A Place to Play Park Master Plan Amendment to include locations for an emergency ground water well and pump station, basketball court, hydration stations, picnic areas, entry gates and existing irrigation pump station.

Questions?