

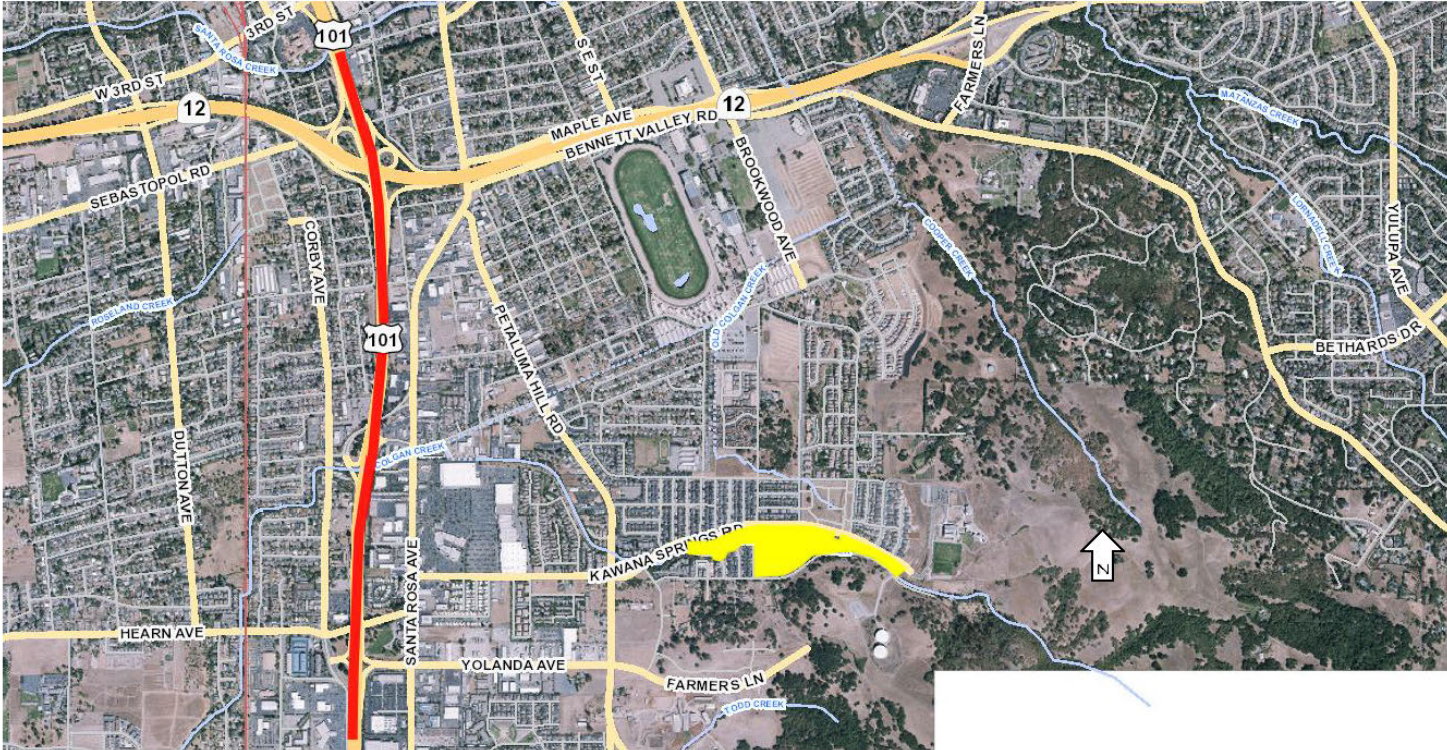


Professional Services Agreement with GSM Landscape Architects, Inc. for Kawana Springs Community Park Master Plan and 30% Design

City Council Meeting
November 15, 2016

Jen Santos
Deputy Director, Recreation and Parks

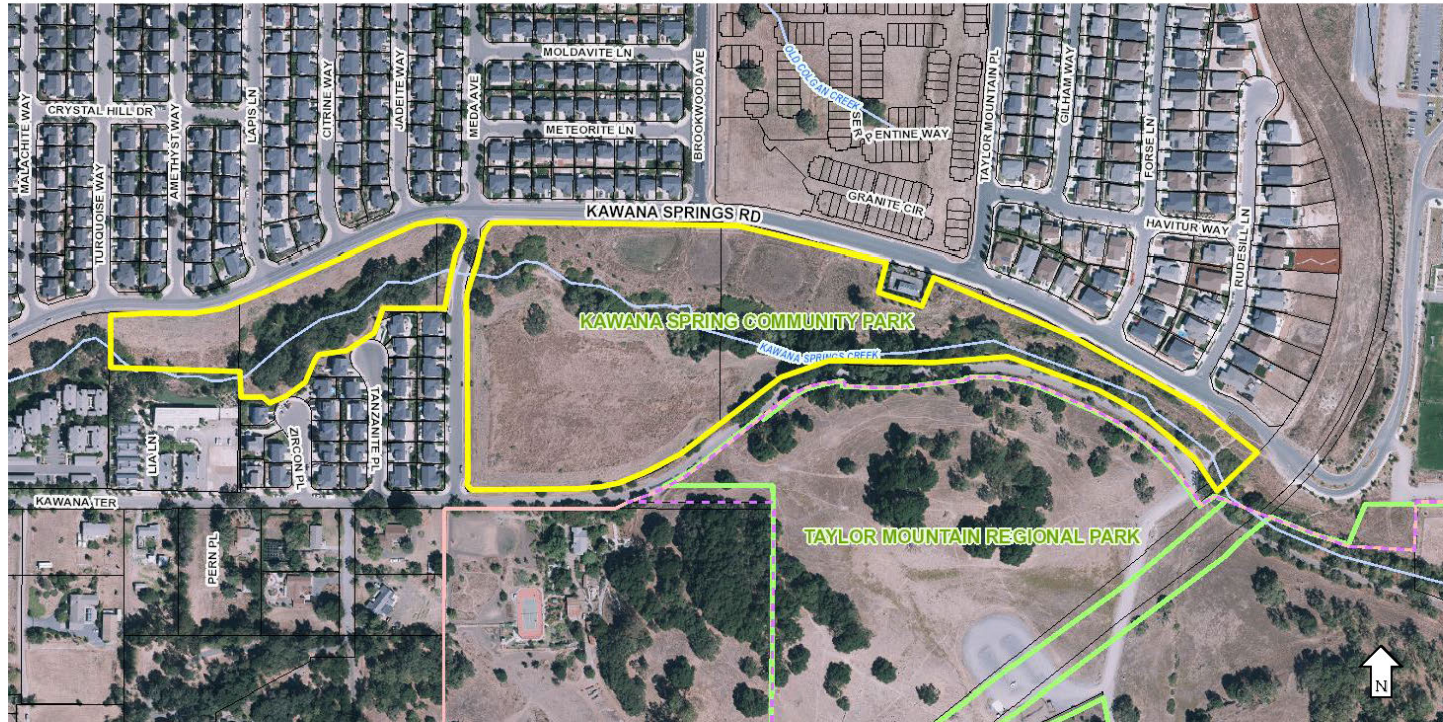
LOCATION MAP



LEGEND:

 = Kawana Springs Community Park Site Location, Santa Rosa, CA

PARK PROPERTY MAP



LEGEND:

 = KAWANA SPRINGS COMMUNITY PARK PROPERTY OUTLINE

BACKGROUND

- Kawana Springs Community Park land acquired 2006 - 2008
- 30% design aligned with environmental analysis ensures future Master Plan compliance with CEQA
- Community input included in master plan scope of services

BACKGROUND

- Environmental analysis by a separate consultant relies on the 30% plans to complete the analysis
- Design consultant relies on the environmental analysis to complete the master plan

PROCESS

- RFP January 2016
- Eight proposals received
- Scoring and review by panel staff and a Council member

RECOMMENDATION

- It is recommended by the Recreation and Parks Department that Council, by resolution, approve the Professional Services Agreement with GSM Landscape Architects, Inc. to provide a master plan and 30% design and engineering plans for Kawana Springs Community Park in the amount of \$134,882.

Questions?