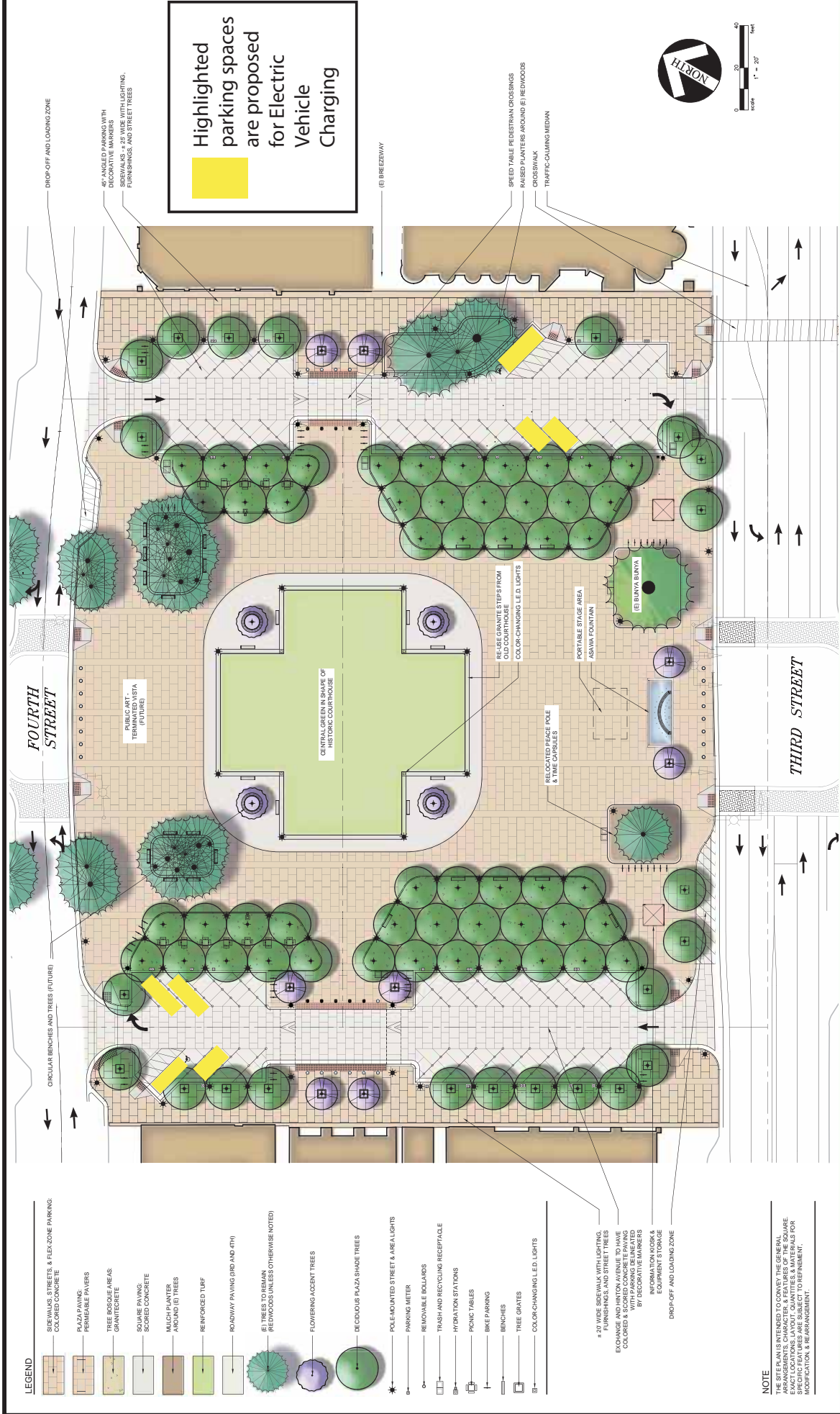


Attachment 1



Highlighted parking spaces are proposed for Electric Vehicle Charging

- LEGEND
- SIDEWALKS, STREETS, & FLEX-ZONE PARKING: COLORED CONCRETE
- PLAZA PAVING: FRENCHABLE PAVERS
- TREE BEDS/PLANTERS: GRANITE/CONCRETE
- SQUARE PAVING: SCORED CONCRETE
- MULCH PLANTER AND GRID (S) TREES
- REINFORCED TURF
- ROADWAY PAVING (8RD AND 4TH)
- (S) TREES TO REMAIN (REDWOODS UNLESS OTHERWISE NOTED)
- FLOWERING ACCENT TREES
- DECIDUOUS PLAZA SHADE TREES
- POLE MOUNTED STREET & AREA LIGHTS
- PARKING METER
- REMOVABLE BOLLARDS
- TRASH AND RECYCLING RECEPTACLE
- HYDRATION STATIONS
- PICNIC TABLES
- BIKE PARKING
- BENCHES
- TREE GRATES
- COLOR-CHANGING LED LIGHTS
- 4-20" WIDE SIDEWALK WITH LIGHTING, FURNISHINGS, AND STREET TREES EXCHANGE AND HIRONO AVENUE TO HAVE COLORED SIDEWALK WITH PARKING DELINEATED BY DECORATIVE MARKERS
- INFORMATION KIOSK & BENCH
- DROP-OFF AND LOADING ZONE

NOTE
 THE SITE PLAN IS INTENDED TO CONVEY THE GENERAL CONCEPTS AND APPROXIMATE LOCATIONS OF THE EXACT LOCATIONS, LAYOUT, QUANTITIES, & MATERIALS FOR MODIFICATION & REARRANGEMENT.



COURTHOUSE SQUARE REUNIFICATION Master Plan



APPROVED JULY 12, 2016

Copyright © 2016