

WINTER SOLSTICE - NO TREES



WINTER SOLSTICE - WITH TREES



© Hedgpeth Architects



Hedgpeth
ARCHITECTS

2321 Bethards Drive
Santa Rosa, California
95405
Phone 707 523 7010
Fax 707 542 2328

201 FARMERS LANE
Santa Rosa, California

SHIMIZU CONSULTING, INC.
590 MILSON PLACE
WINNICO, CALIFORNIA 95482
(707) 896-9088

SHADOW STUDIES
WINTER SOLSTICE



Revisions
2015-04-08 Concept Site
2015-05-12 5D Plans
2015-12-11 Revised 5D

Job Number
1429

Project Architect
PAUL GILGER

Drawn By
PAUL GILGER

Date
SEPT 2014

Sheet

NOT FOR CONSTRUCTION

SS.2
of

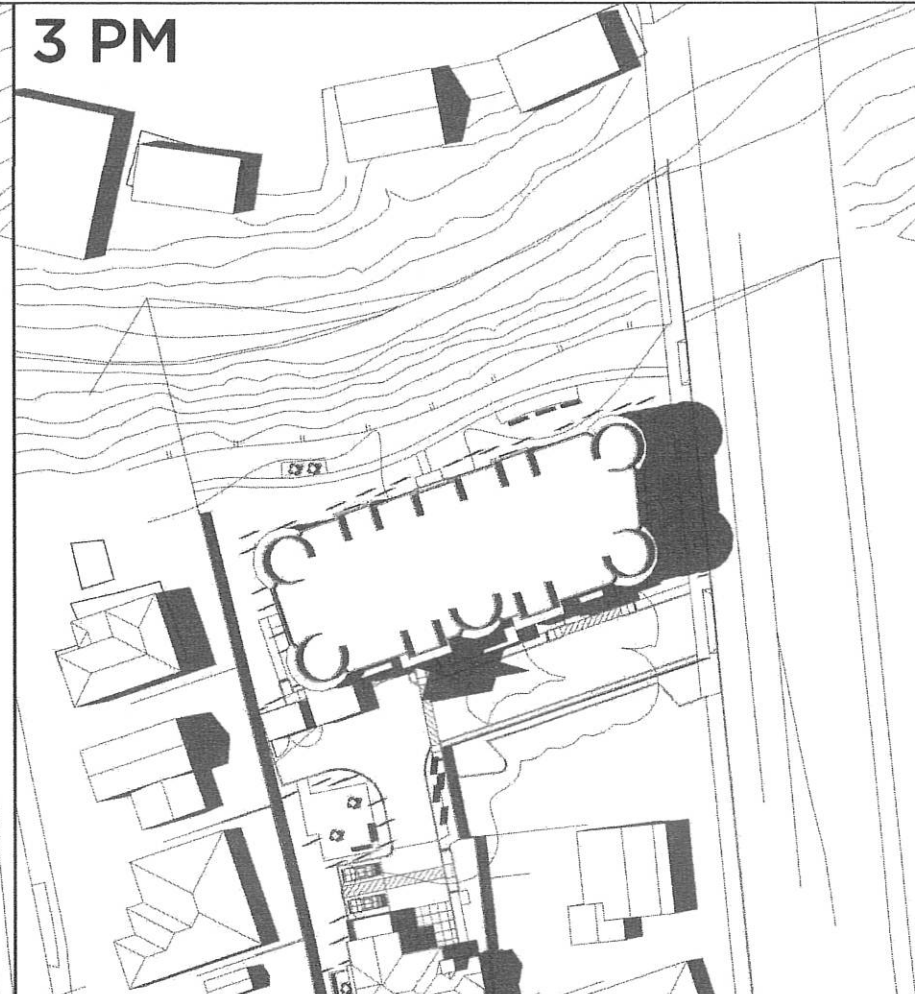
9 AM



NOON



3 PM



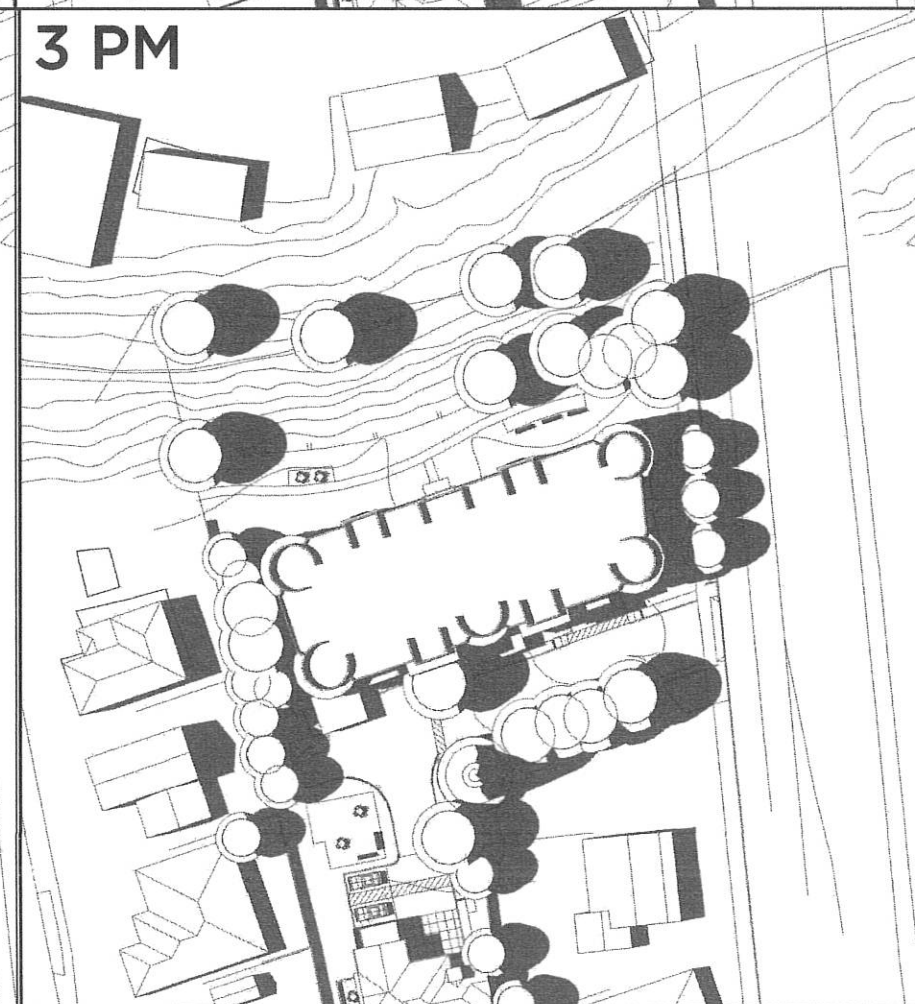
9 AM



NOON



3 PM



SUMMER SOLSTICE - NO TREES



SUMMER SOLSTICE - WITH TREES



© Hedgpeth Architects



Hedgpeth ARCHITECTS

2321 Bethards Drive
Santa Rosa, California
95405
Phone 707 523 7010
Fax 707 542 2328

201 FARMERS LANE
Santa Rosa, California

SHIMIZU CONSULTING, INC.
860 MILSON PLACE
WINCOSA, CALIFORNIA 95492
(707) 696-0000

SHADOW STUDY
SUMMER SOLSTICE



Revisions
2015-04-08 Concept Site
2015-05-12 SD Plans
2015-12-11 Revised SD

Job Number
1429

Project Architect
PAUL GILGER

Drawn By
PAUL GILGER

Date
SEPT 2014

Sheet

SS.1
of .

NOT FOR CONSTRUCTION