

CITY OF SANTA ROSA
CITY COUNCIL

TO: MAYOR AND CITY COUNCIL
SUBJECT: VILLAGE GARDENS SUBDIVISION – ACCEPTANCE OF A
BICYCLE-PEDESTRIAN EASEMENT
STAFF PRESENTER: ANTHONY A. CABRERA, CITY ENGINEER
TRANSPORTATION and PUBLIC WORKS

AGENDA ACTION: RESOLUTION

ISSUE(S)

Should the Council accept a bicycle-pedestrian easement offered for dedication on the Final Map of the Village Gardens Subdivision?



COUNCIL GOALS/STRATEGIES

The bicycle-pedestrian easement will support Council Goal 3: Provide Leadership in Environmental Initiatives by implementing Strategic Objective Number 6: Improve our transportation system to reduce vehicle miles and promote multi-modal transportation.

BACKGROUND

1. Village Gardens is a 106 lot subdivision on the corner of Sebastopol Road and Boyd Street. The project was approved by the Planning Commission in 1999 and the Final Subdivision Map was recorded in 2005.
2. Village Gardens irrevocably offered a public bicycle-pedestrian easement, which ran adjacent to and along the railroad right-of-way south to Barham Avenue.
3. The intent of the easement was to have it be incorporated into the alignment of the multi-use path being constructed by Sonoma Marin Area Rail Transit (SMART).
4. At the time the easement was offered, the alignment for the SMART multi-use path was not finalized and thus the offer was rejected.

ANALYSIS

1. The Village Gardens subdivision was approved in 1999 with its Final Map being recorded in 2005.

2. Village Gardens irrevocably offered a public bicycle-pedestrian easement which was rejected due to the alignment of the SMART multi-use path not being finalized.
3. Currently, the design of the SMART multi-use path is being finalized and the alignment is set. It is now the appropriate time to accept the offer of the easement.
4. The State Subdivision Map Act states in Section 66477.2 that offers previously rejected may be accepted by resolution.

RECOMMENDATION

This resolution, recommended by the Transportation and Public Works Department, authorizes the Council to accept the offer of the “Public Bicycle-Pedestrian Easement”, as shown on the subdivision map titled, Village Gardens, recorded in Book 680 of Maps, Pages 19 to 26, Sonoma County Records.

Author: Anthony A. Cabrera

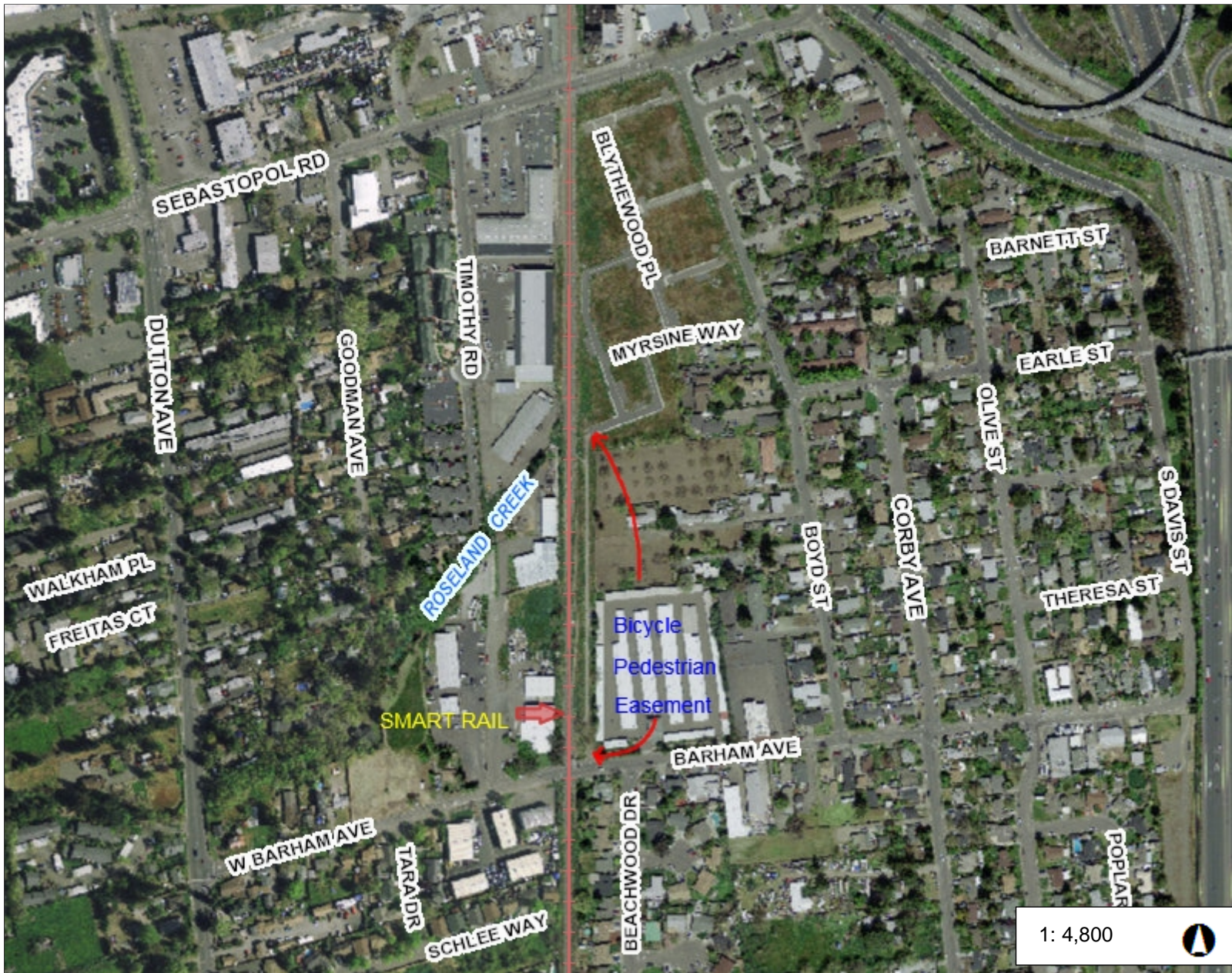
Attachments:

- Location Map

Village Gardens - Bicycle-Pedestrian Easement

Legend

-  Rail Road
- 2011 Aerial
-  Red: Band_1
-  Green: Band_2
-  Blue: Band_3



Notes

0.2 0 0.08 0.15 Miles

This map is a user generated static output from an Internet mapping site and is for reference only. Data layers that appear on this map may or may not be accurate, current, or otherwise reliable.

THIS MAP IS NOT TO BE USED FOR NAVIGATION