



Caritas Village
Burbank Housing & Catholic Charities

VICINITY MAP

City of Santa Rosa
MAR 12 2018
Planning & Economic
Development Department



EXHIBIT
03.09.2018
PYATOK

6b. Caritas, Santa Rosa Existing Site Analysis

Important **residential** street frontages

Important **public** street frontages



Important **public** corners



Potential central space for future campus

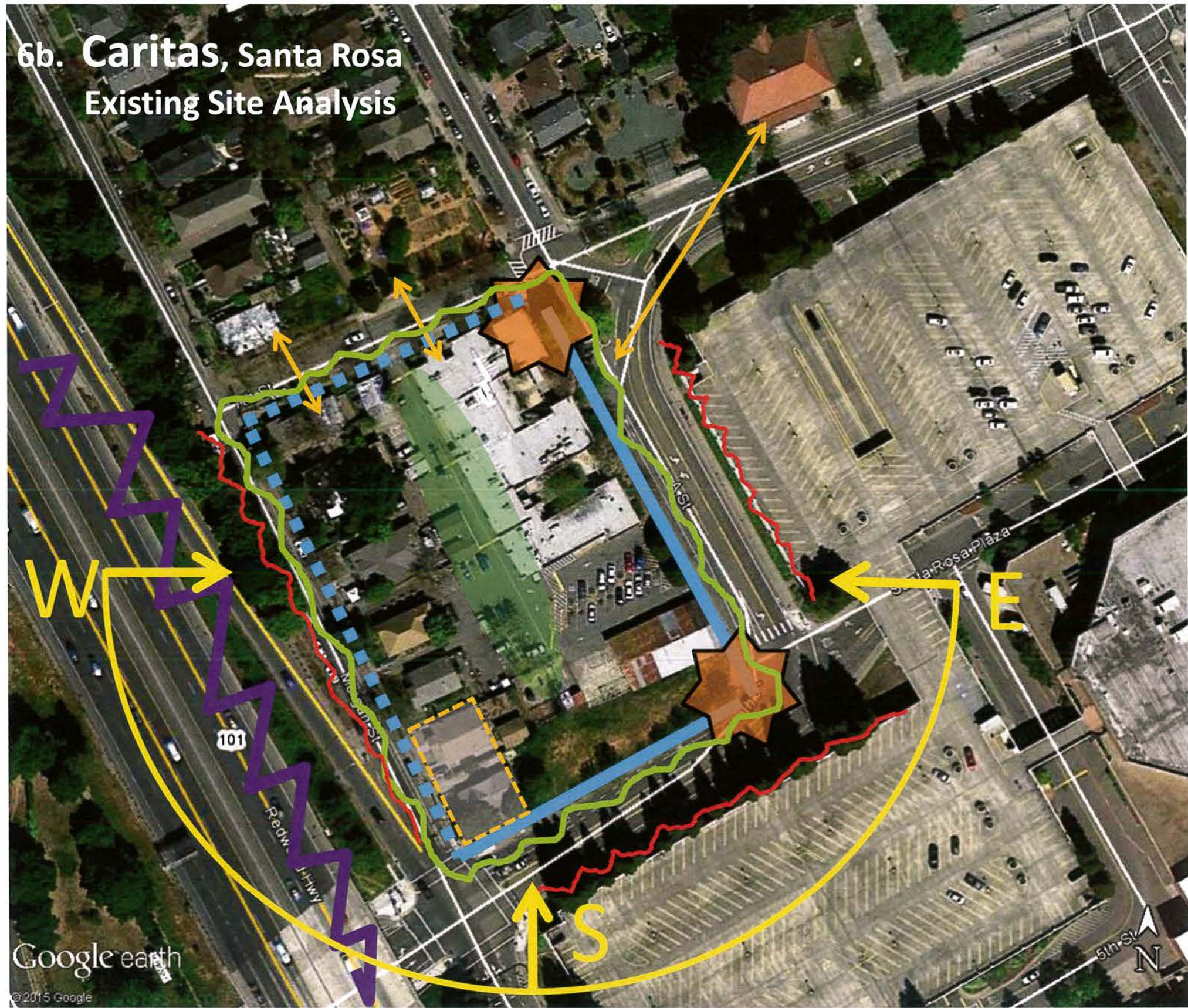
Important architectural relationships

Important landscape edges

Difficult street edges

Highway noise

2 existing houses





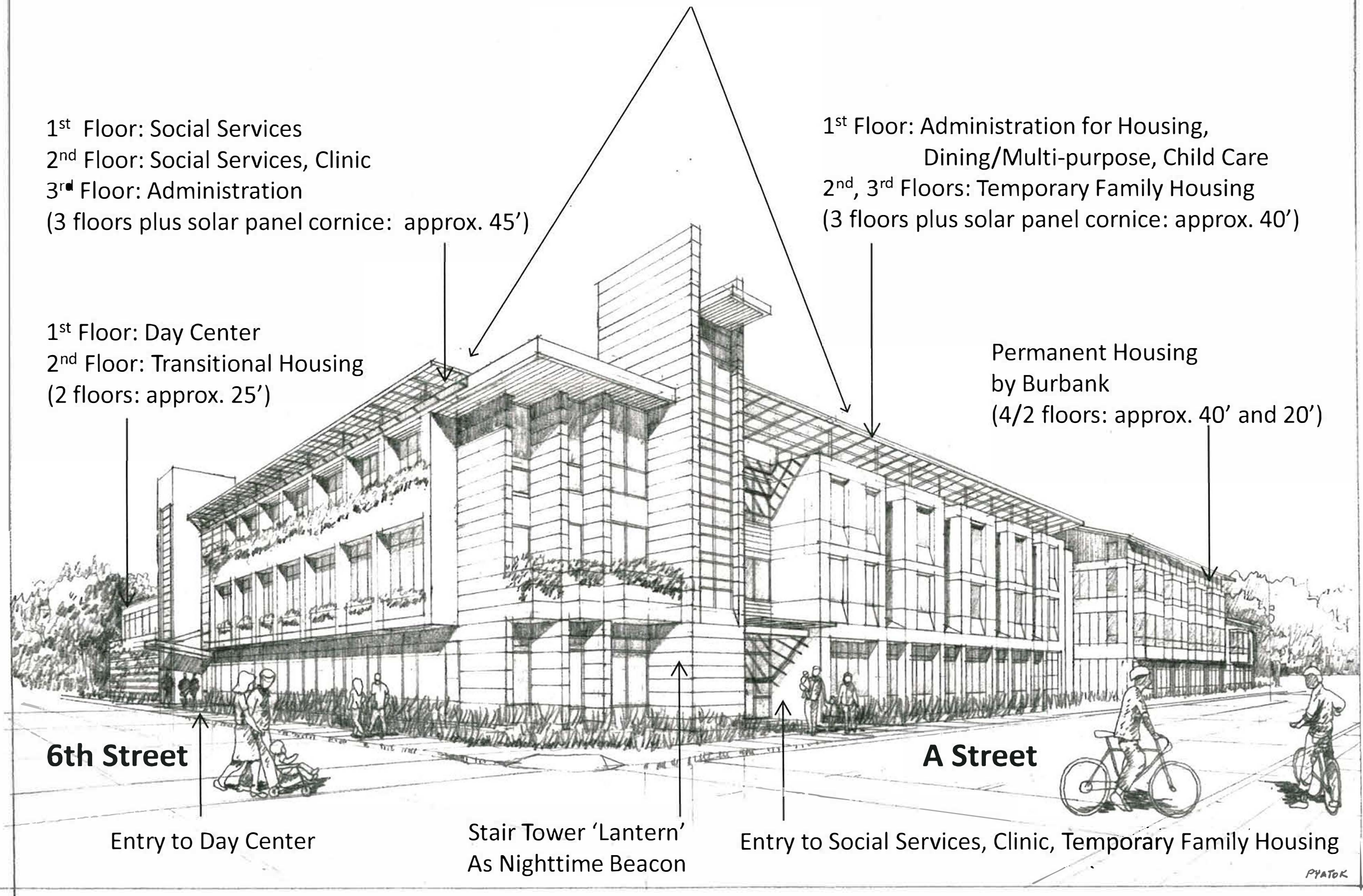
Solar Voltaic Panels for on-site Electricity

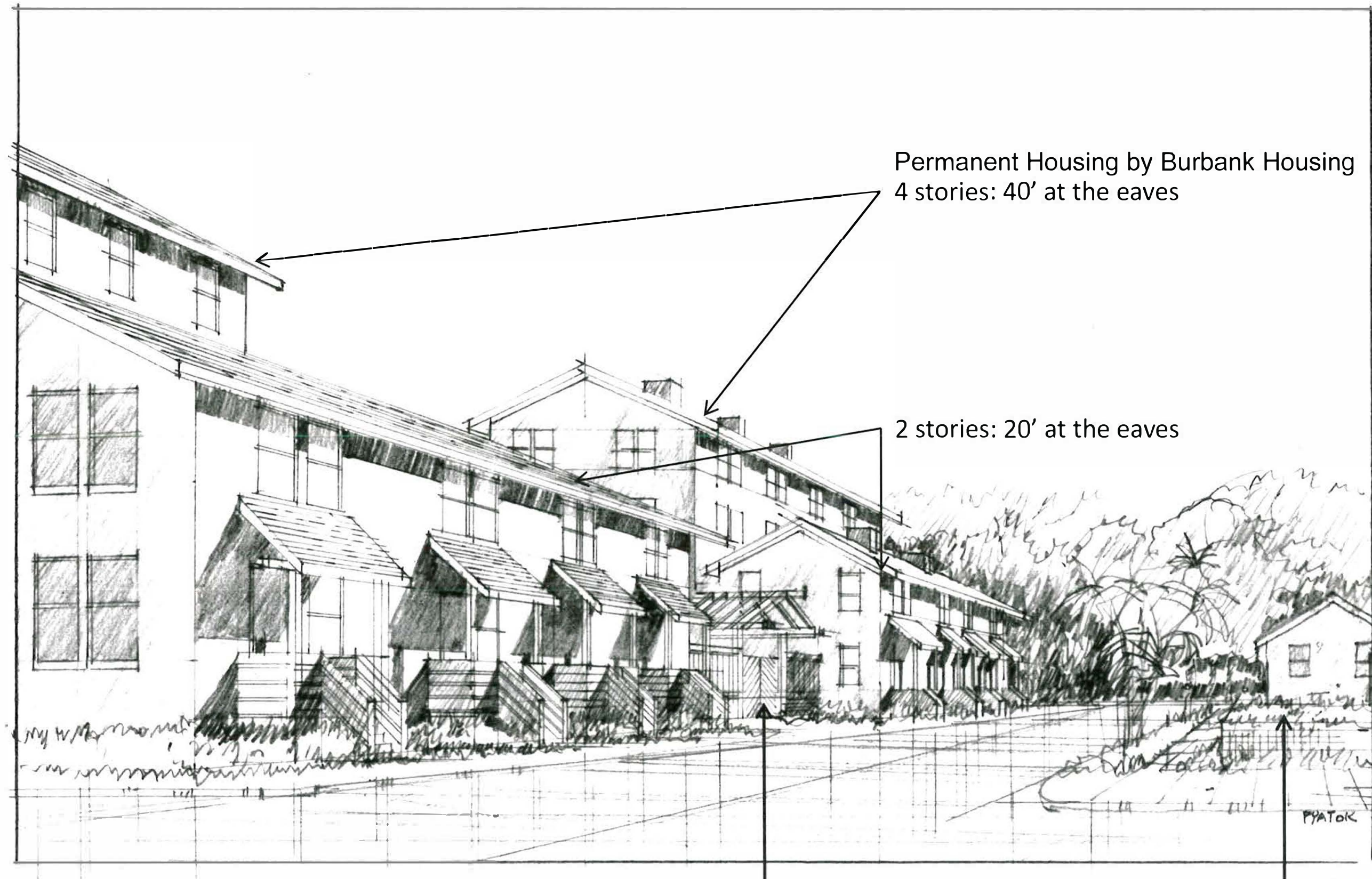
1st Floor: Social Services
2nd Floor: Social Services, Clinic
3rd Floor: Administration
(3 floors plus solar panel cornice: approx. 45')

1st Floor: Administration for Housing,
Dining/Multi-purpose, Child Care
2nd, 3rd Floors: Temporary Family Housing
(3 floors plus solar panel cornice: approx. 40')

1st Floor: Day Center
2nd Floor: Transitional Housing
(2 floors: approx. 25')

Permanent Housing
by Burbank
(4/2 floors: approx. 40' and 20')



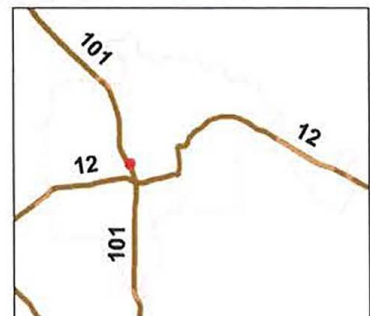


Permanent Housing by Burbank Housing
4 stories: 40' at the eaves

2 stories: 20' at the eaves

Entry to Caritas Village from 7th Street

Existing Community Garden
and house beyond



APN's, Addresses, Parcels and Aerial

8/8/2012
 Scale 1: 1,252
 0 Miles 0.02