



ONLINE AFFORDABLE HOUSING MAP OVERVIEW

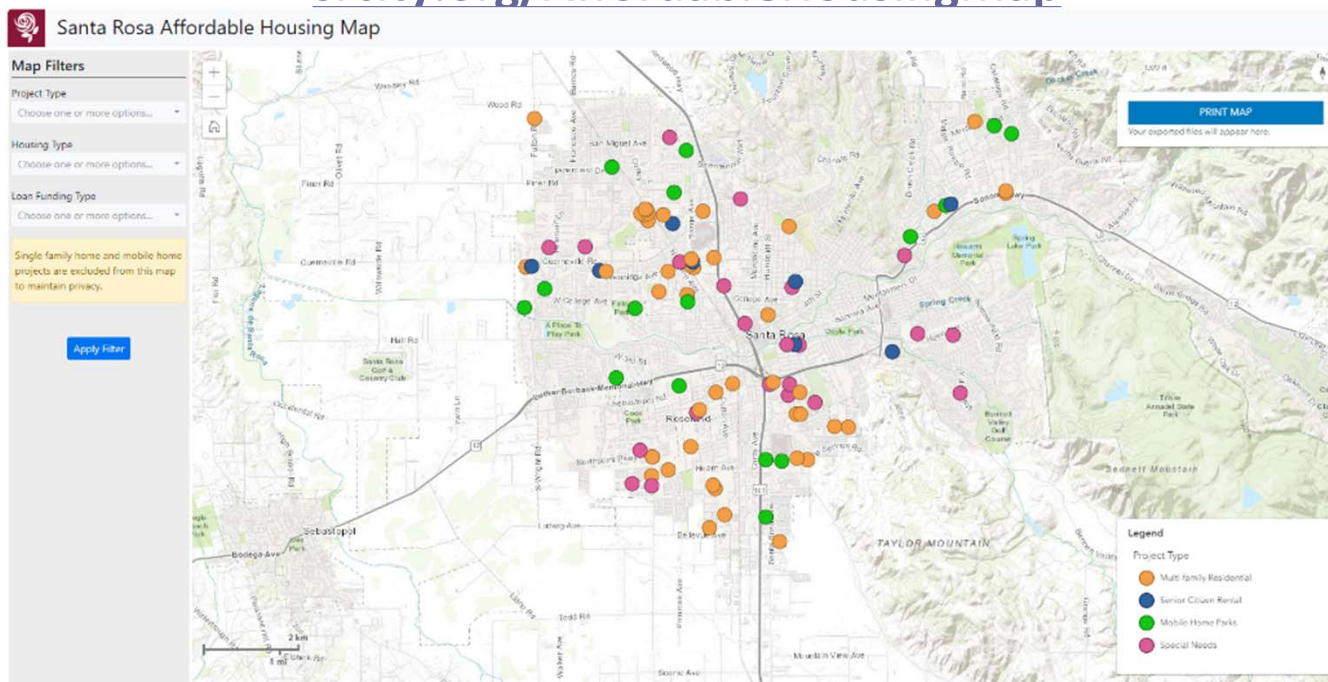
City Council

August 6, 2019

Elaine Gutsch, Administrative Technician
Housing and Community Services

The Santa Rosa Affordable Housing Map displays multi-family, senior citizen, and special needs rental properties, as well as mobile home parks, that have been funded by or are under agreement with the City of Santa Rosa Housing Authority.

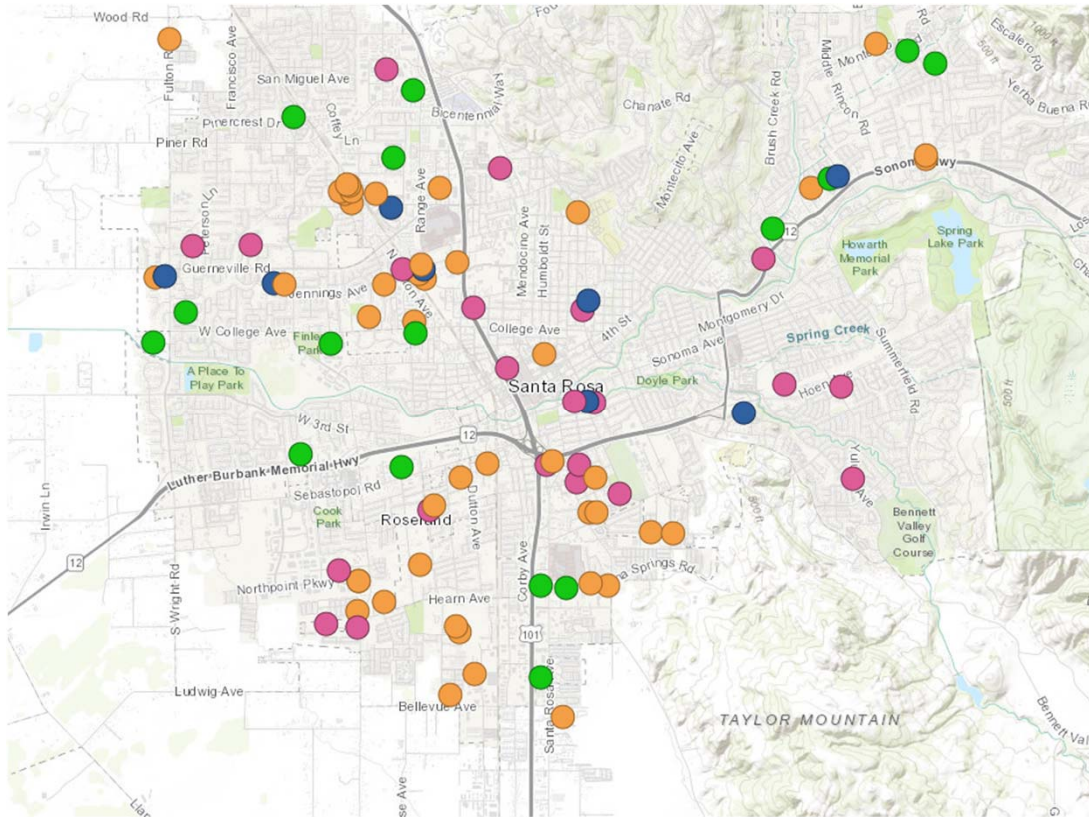
srcity.org/AffordableHousingMap



- Designed to allow staff and the general public to identify affordable housing locations, information, and links to property management websites.
- Developed by I.T. Department utilizing the Housing Trust's Affordable Housing Loan Management system as the data source.
- Improves upon previous PDF list of affordable housing.
- Two map versions: internal (staff only), which protects personal information, and external (public)

Affordable Housing Map Demo

- Map is organized by housing type

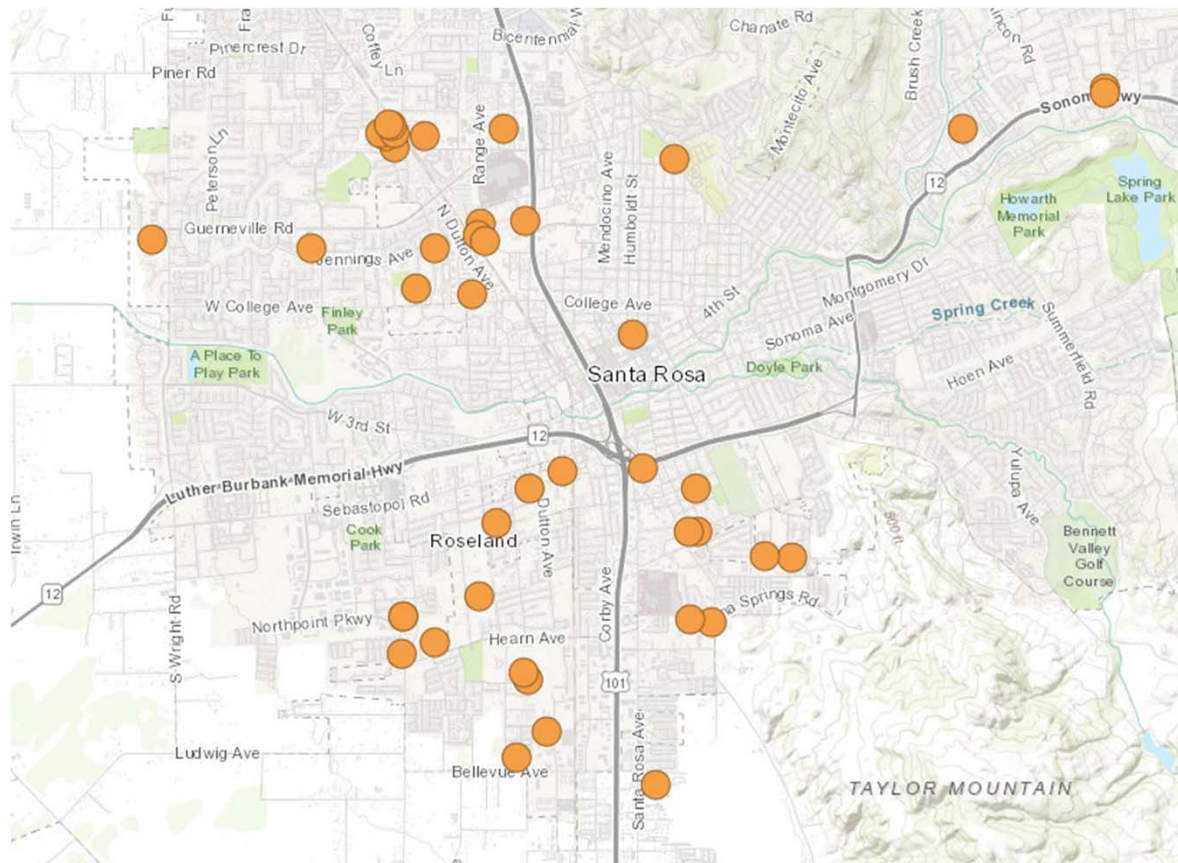


- Multi-family Residential
- Senior Citizen Rental
- Mobile Home Parks
- Special Needs

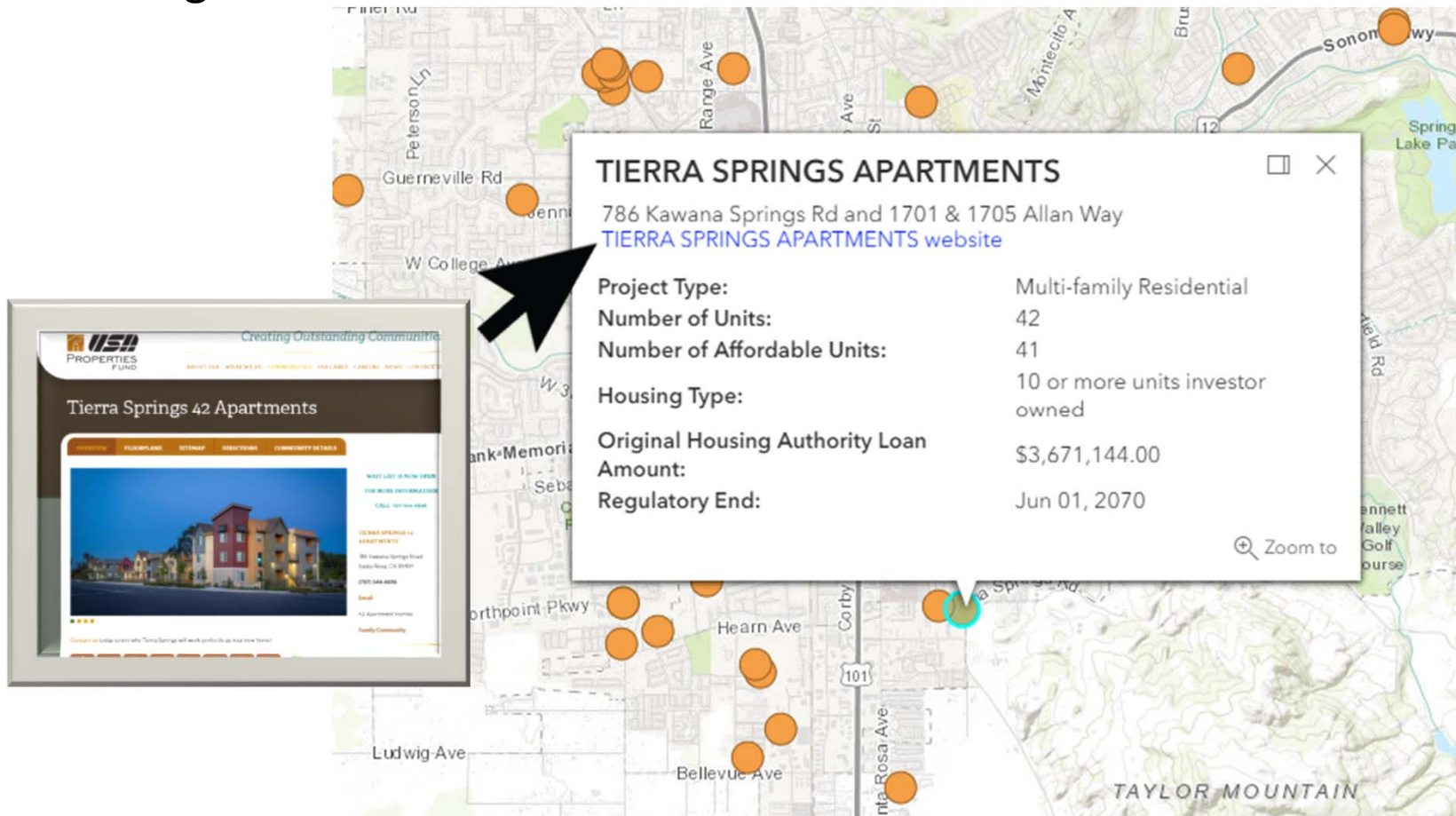
Internal map also includes

- Mobile Home Rehab
- Single Family Rehab

- Filters allow to focus on one housing type, i.e. multi-family residential



- Clicking on dot brings up information and link to property management website



The image shows a map of Santa Rosa, California, with several orange dots representing property locations. A black arrow points to a specific dot, which has triggered an information popup window. The popup window displays the following details for 'TIERRA SPRINGS APARTMENTS':

TIERRA SPRINGS APARTMENTS	
786 Kawana Springs Rd and 1701 & 1705 Allan Way	
TIERRA SPRINGS APARTMENTS website	
Project Type:	Multi-family Residential
Number of Units:	42
Number of Affordable Units:	41
Housing Type:	10 or more units investor owned
Original Housing Authority Loan Amount:	\$3,671,144.00
Regulatory End:	Jun 01, 2070

Below the popup window, a thumbnail of the property's website is shown. The website header reads 'USA PROPERTIES FUND' and 'Creating Outstanding Communities'. The main heading is 'Tierra Springs 42 Apartments'. The website features a large image of the apartment building and several sections of text, including 'WHAT LIVES IN NOW OPEN FOR MORE INFORMATION CALL FOR MORE INFO', 'TIERRA SPRINGS 42 APARTMENTS', '42 Kawana Springs Road Santa Rosa, CA 95403', '509.544.4606', and '42 Apartment Homes Ready Community'. A small note at the bottom of the thumbnail says 'Contact us today to see why Tierra Springs will work perfectly at your new home!'.

- Loan Funding Type filter isolates properties that either have been funded by a Housing Authority loan, or have not received funding, but which have affordability restrictions through density bonus or other agreements.

Map Filters

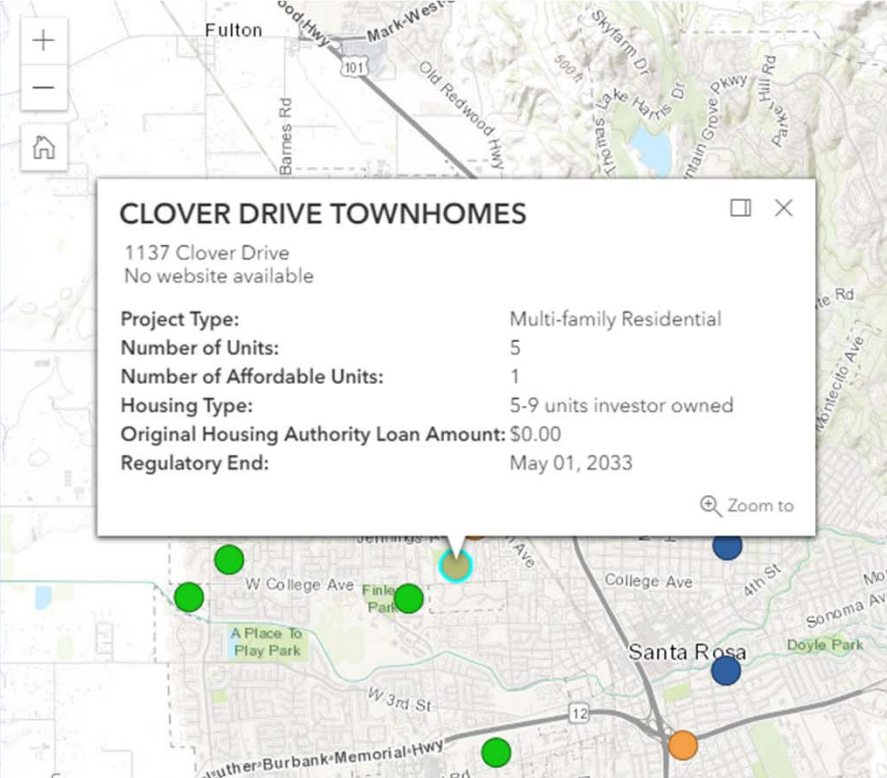
Project Type
Choose one or more options...

Housing Type
Choose one or more options...

Loan Funding Type
Density Bonus, Housing Alloc., Bond, Other

Single family home and mobile home projects are excluded from this map to maintain privacy.

Apply Filter



CLOVER DRIVE TOWNHOMES

1137 Clover Drive
No website available

Project Type:	Multi-family Residential
Number of Units:	5
Number of Affordable Units:	1
Housing Type:	5-9 units investor owned
Original Housing Authority Loan Amount:	\$0.00
Regulatory End:	May 01, 2033

Zoom to

- Map launched July 1, 2019
- Future Enhancements:
 - Affordability breakdown
 - Including affordable housing that is not Housing Authority-funded or under agreement with us



Questions/ Feedback

srcity.org/AffordableHousingMap

Elaine Gutsch
Administrative Technician
Housing and Community Services
egutsch@srcity.org
(707) 543-3308

