

Preferential Parking Permit Program

City Council Meeting
August 13, 2019

Kim Nadeau, Parking Manager
Finance Department



CURRENT CONDITIONS

- Currently on-street employee permits are not available
- Parking is challenging on certain West End streets
- Long term spill over parking is impacting accessibility for those who live, work and visit the West End



EXISTING PARKING TIME LIMITS



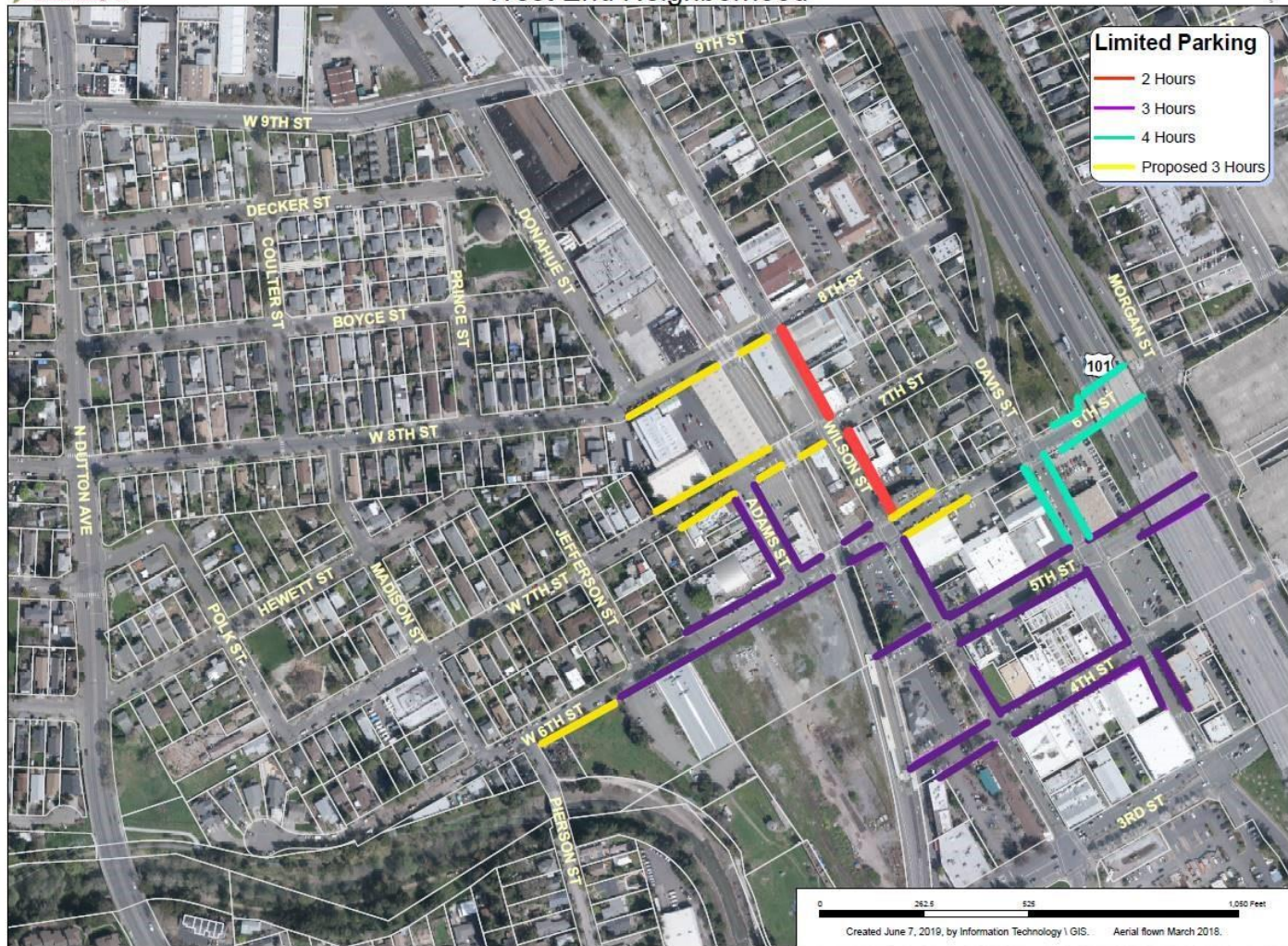
PROPOSED EMPLOYEE PARKING PERMIT

- On-street permit program to manage employee parking in the West End
- Expand 3-hour time limited parking
- Balance use of on-street parking for residents, visitors and employees
- Deter long term parking from other outside attractors





PROPOSED ADDITIONAL 3 HOUR TIME LIMITS



EMPLOYEE PERMIT GUIDELINES

- Businesses within 200 feet of a designated preferential parking area are eligible to purchase employee parking permits
- Business must provide a valid Santa Rosa business tax certificate
- Only eligible businesses may obtain permits for their employees
- Businesses can purchase a maximum of twenty-five permits
- Acceptable forms of proof of employment are W-2 form or pay stub

Proposed Designated Employee Parking Area



200 FOOT ZONE - ELIGIBLE BUSINESSES



HOURS AND COST

- 3 Hour time limit from 9 am – 6 pm; Monday – Saturday
- \$25/month per employee permit
- Employees with permits are exempt from the posted time limits
- Permit does not guarantee a parking space

RECOMMENDATION

It is recommended by the Finance Department that the Council introduce an ordinance adding Chapter 11-26 Preferential Parking to the City Code, to establish an on-street employee permit program, and by resolution approve the revised Schedule of Parking User Fees.

Questions?