

Wildfire Preparation

Board of Public Utilities Meeting
August 3, 2023

Joe Schiavone
Deputy Director -
Water & Sewer Operations

2023 Fire Season

- Started June 5, 2023
- Late Rains
- Increased Moisture
- Shorter Season



Impacts from Fires and Interrupted Power Supply

- Damaged Infrastructure
- Denied Access
- Service Disruptions
- PG&E Cut Power for Safety
- PSPS
- Excessive Demand

Local Operations

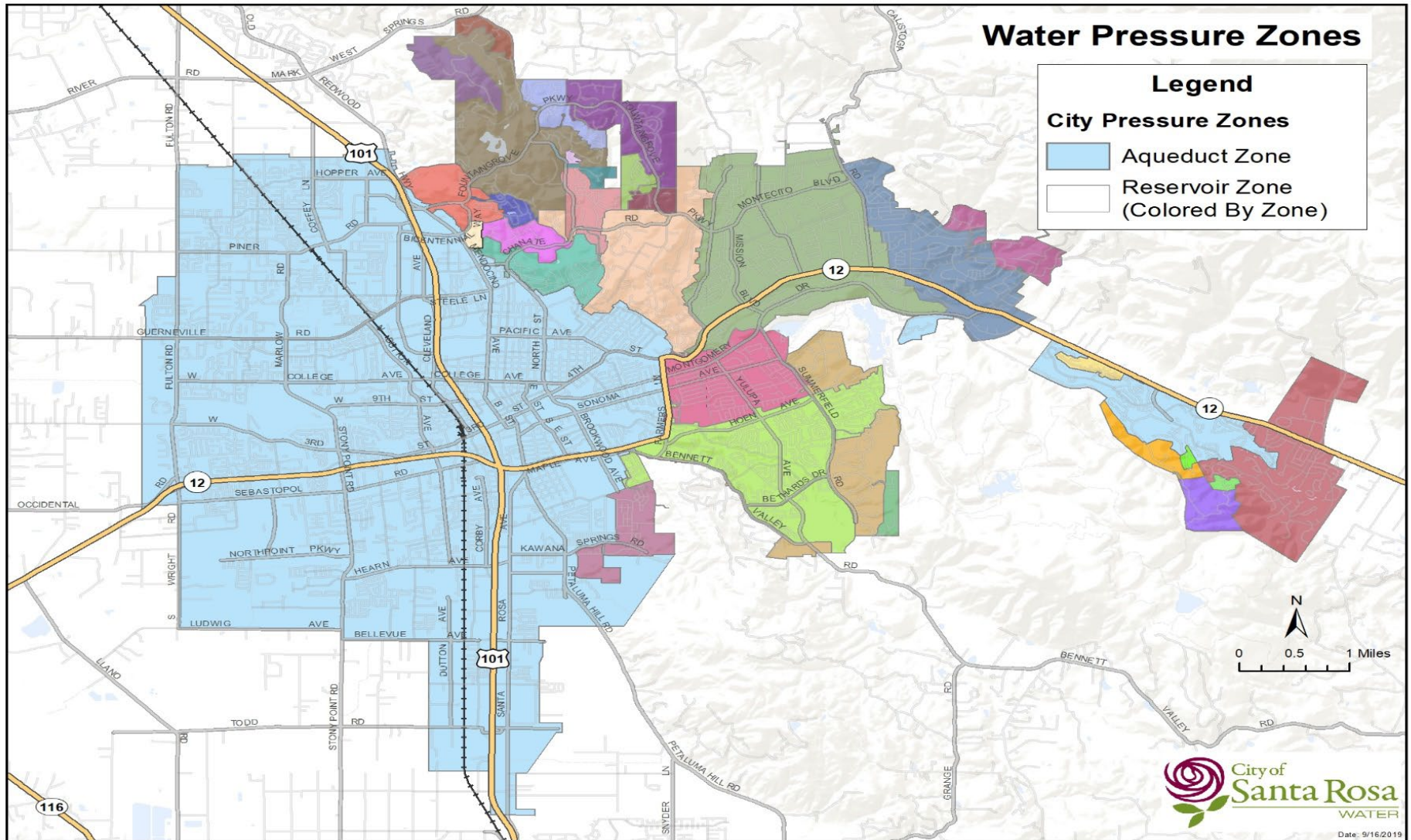
- Water Supply
- Water Distribution System
- Sewer Collection System
- Facilities



Water Supply



Water Distribution System



Water Reservoirs



Water Pump Stations



Sewer Collection System



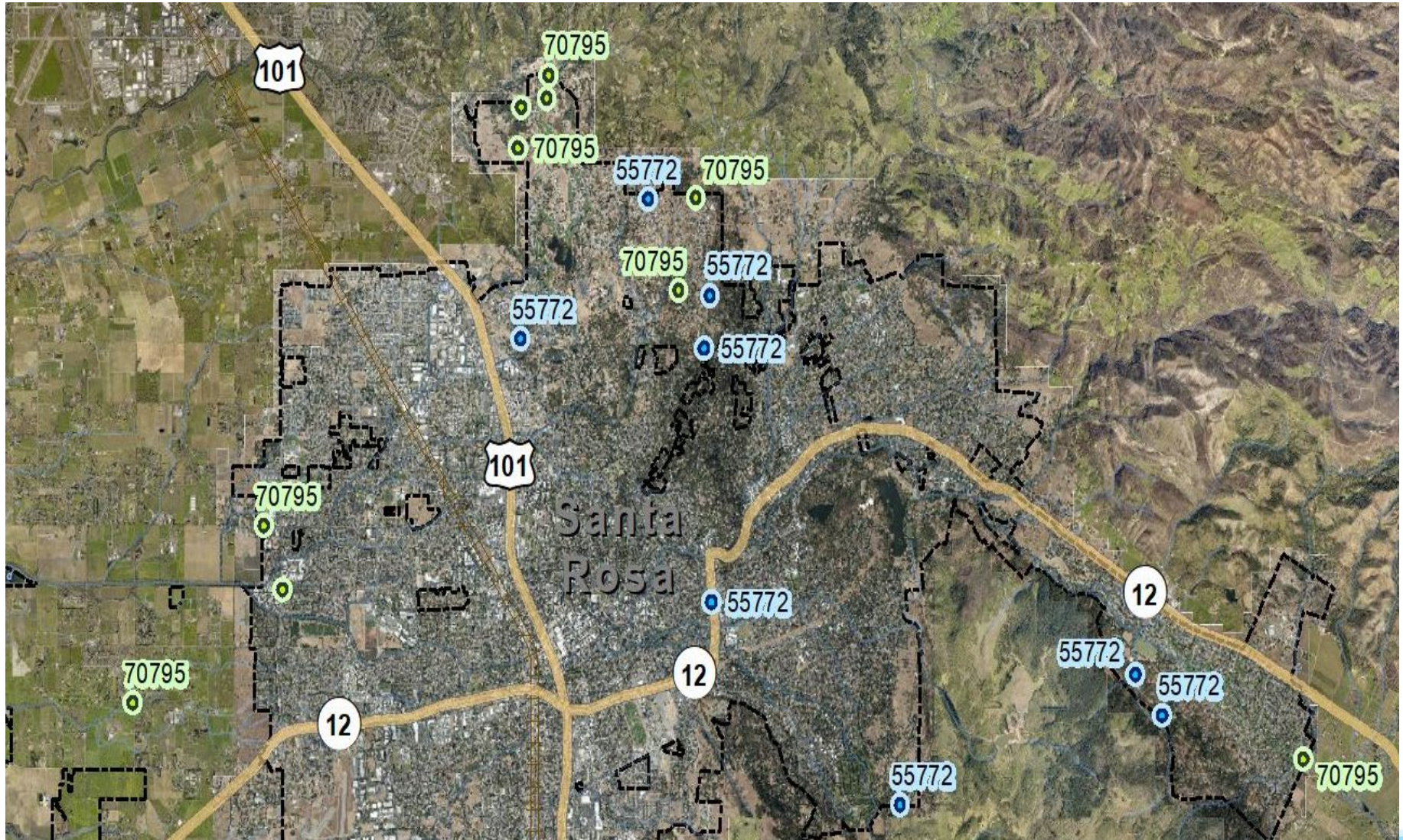
Facilities



Infrastructure Improvements

- Planning
 - High-Flow Pumps at Water Stations
- On Going
 - Fiber Optic Communication
 - Water/Wastewater Pump Station Hardening
- Construction
 - Controller (PLC) and Radio Upgrades
 - Backup Generator Replacement

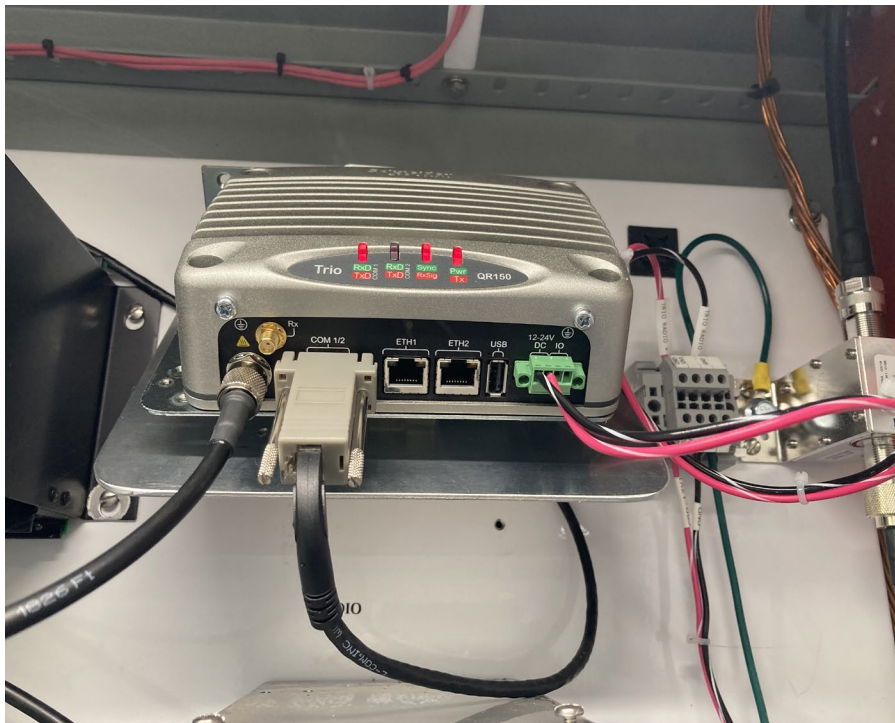
Generator Replacement Project HMGP



Generator Replacement Project HMGP



Controller and Radio Upgrade Project



COMMUNICATION

- Monthly Water Operations Meeting –Sonoma Water and Contractors.
- Water and Fire Operations Communications Meeting
- PG&E Webinars/PG&E PSPS Portal
- National Weather Service SF Bay Area
- Training
- Internal
- External



Communication & Outreach

Resources

- [pge.com/psps](http://pge.com/psp)
- srcity.org
- City Connections (8/3/23)



KNOW YOUR ALERTS

The City of Santa Rosa uses multiple notification and warning systems to make sure emergency alerts are delivered to the people who need the information.

Emergency Alert System (EAS)
National public warning system that will interrupt local broadcast tv and radio programming to provide an alert in the event of a large-scale emergency. **No registration required**

Wireless Emergency Alerts (WEA)
Urgent alerts sent as text-like messages to your mobile phone based on your location (you will only receive notification if you are in the area of the emergency). WEAs have three alert categories -- Imminent Threat, AMBER, Presidential. You must keep the factory settings on to your WEA-capable phone to receive a WEA. **No registration required**

SoCoAlert
Emergency notification service providing Sonoma County first responders the ability to alert residents by landline or mobile phone, text message and email about imminent threats to life and property in specific impacted areas. Register all addresses that you would like to receive alerts for (work, child's school, etc.). You don't have to be in the location of the emergency to receive the alert. **Must register at SoCoAlert.com OR call (866) 939-0911, press "0" at the menu, ask operator for assistance with registering for SoCoAlert**

Nixle
Community information service managed by Santa Rosa Police and Fire Departments to send email and/or text message notifications re... NOT delivered by phone call. There are three types: nixle.com or text y

City of Santa Rosa
Emergencies can happen anywhere, at any time.
Complete this checklist to register for ALL warning systems to ensure emergency notifications make it to you.

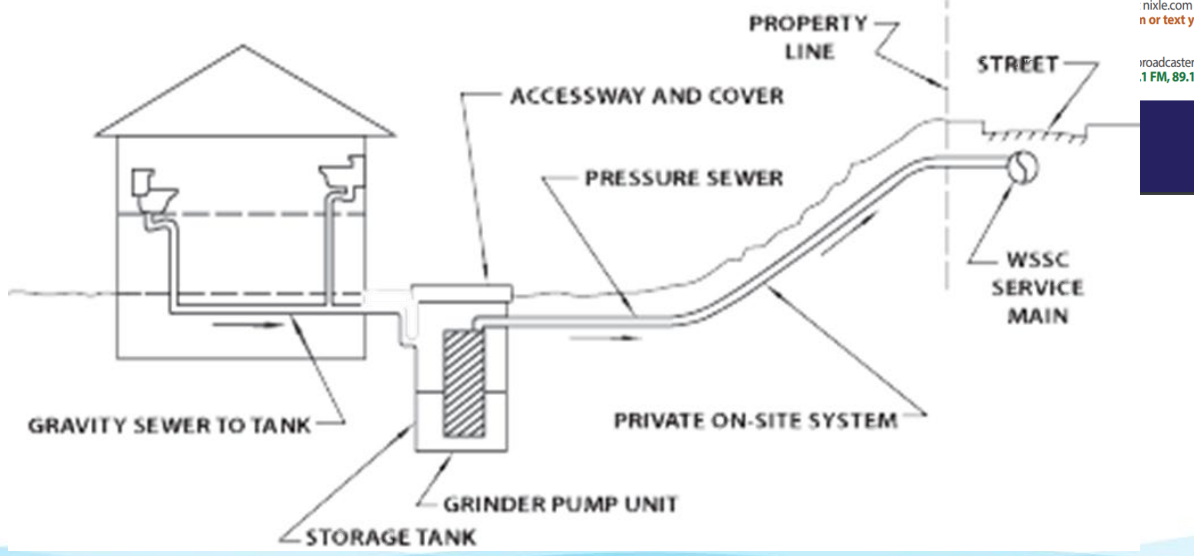
- Register at SoCoAlert.com to subscribe your:
 - Home address to receive alerts for this location
 - Business address to receive alerts for this location
 - Other addresses you want to receive alerts for during an emergency in those locations
- Mobile phone number to receive phone call and/or text message

Timing of Notifications

When possible:

- ~48 HOURS before power is turned off
- ~24 HOURS before power is turned off
- JUST BEFORE power is turned off
- DURING THE PUBLIC SAFETY OUTAGE
- ONCE POWER HAS BEEN RESTORED

PG&E crews will work to inspect the lines visually inspect thy system for damage and rs after the extreme weather has passed. avs. residents should be prepared for power



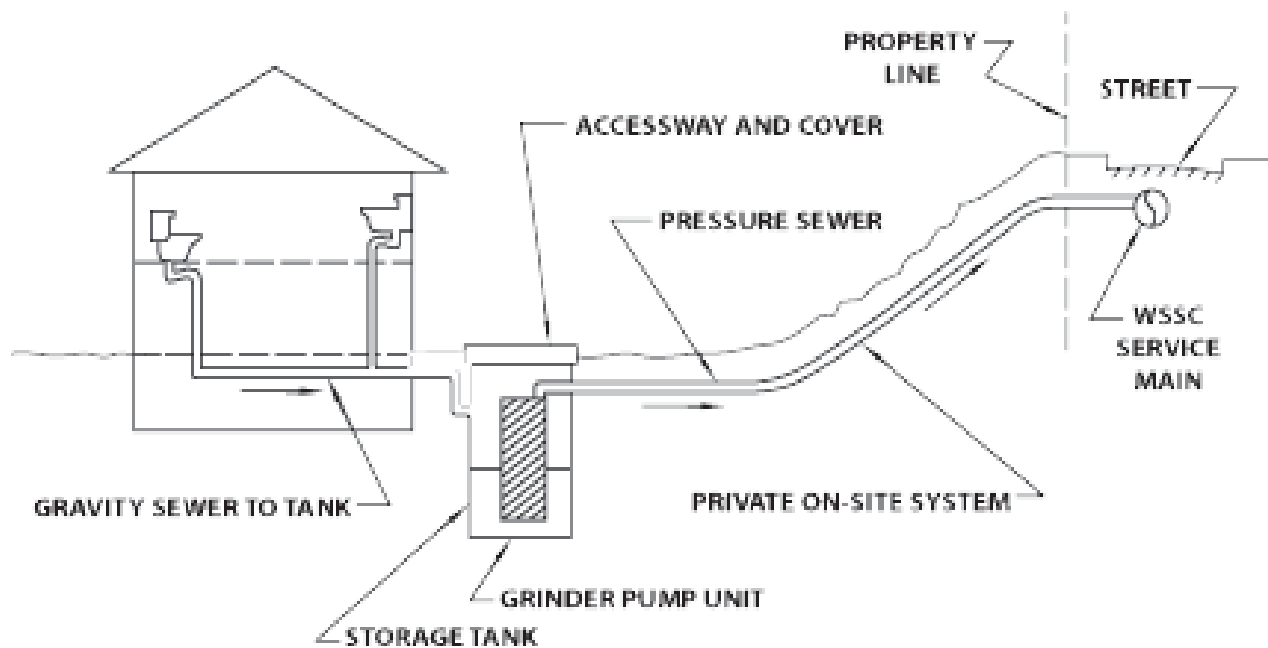
Important message for properties with private water or sewer systems

Shutoff?

Shutoff, some factors include:

- LOW HUMIDITY LEVELS**
generally 20% and below
- WINDS OF 25 MPH AND ABOVE**
generally 45 MPH, depending on temperature, terrain and local climate
- ON-THE-GROUND, REAL-TIME OBSERVATIONS**
from PG&E's WSOC and field observations from PG&E crews

Private Systems Water and Sewer Pumps





Questions