

Alternatives East (Dispensary)

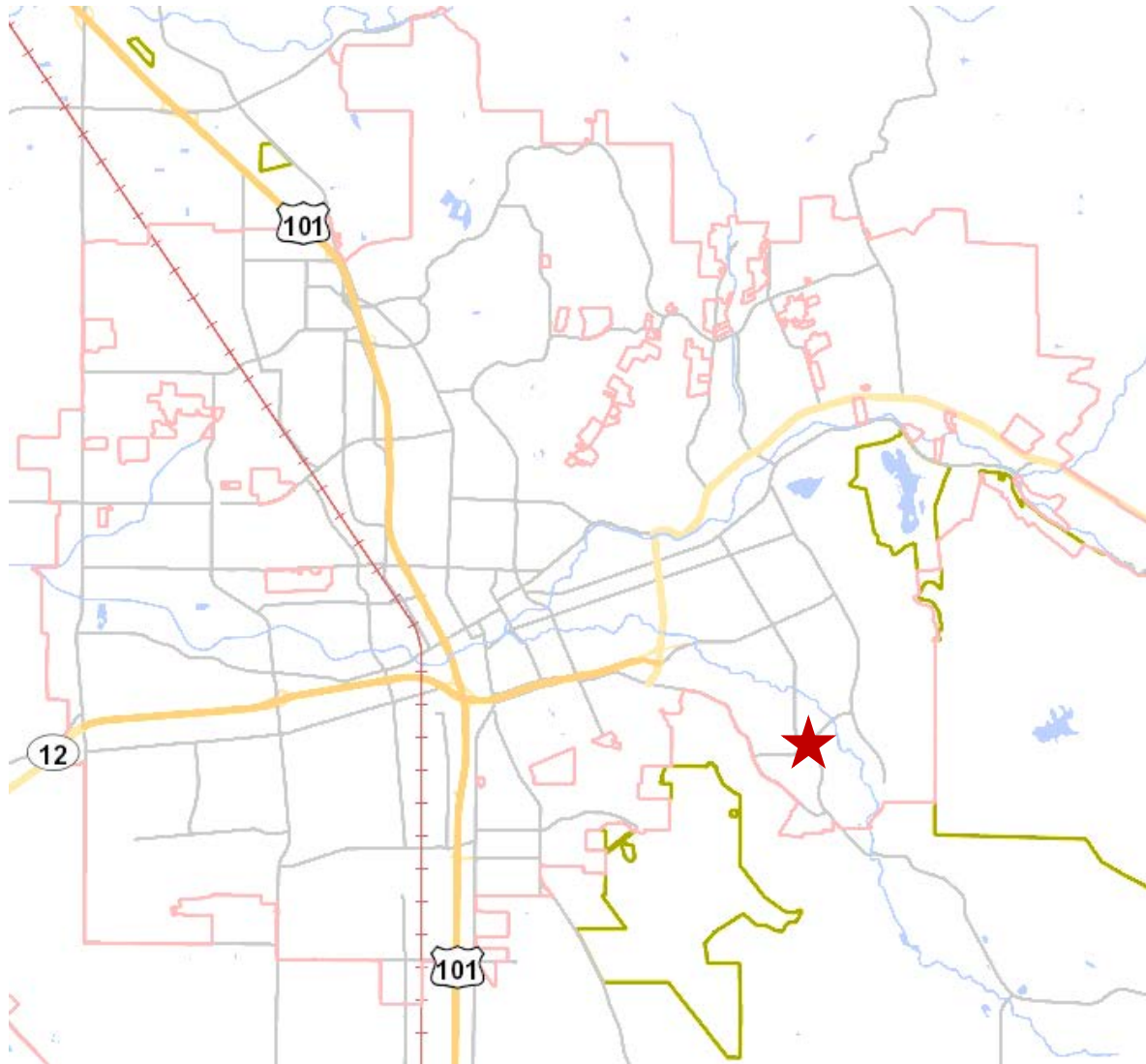
2300 Bethards Drive, Suite A

February 25, 2021

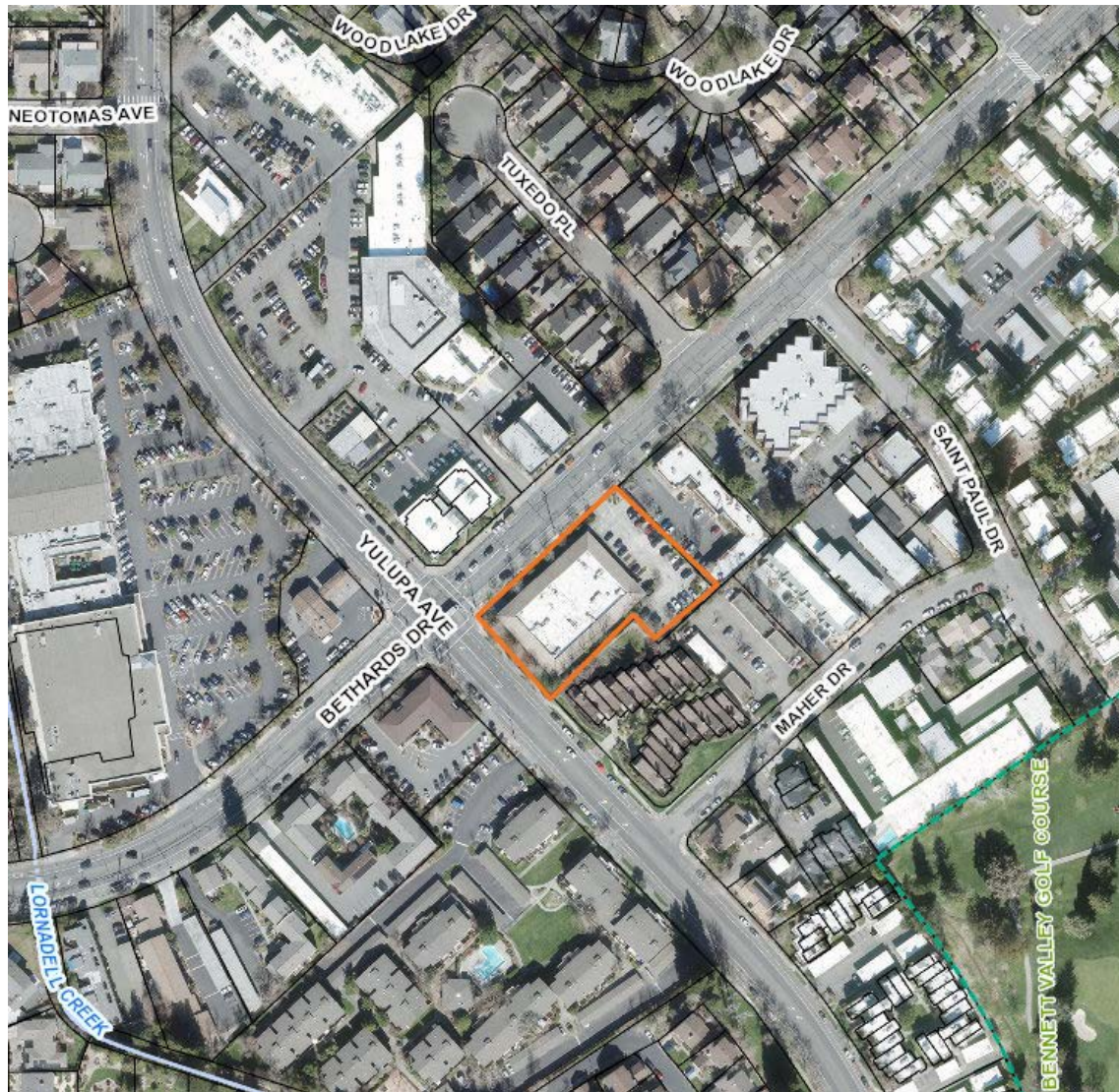
Adam Ross on Behalf of Susie Murray
Project Planner
Planning and Economic Development

- Alternatives East (Project) proposes to operate a cannabis retail facility with delivery within a 2,550-square-foot tenant space of an existing 17,990 square-foot building.
 - Hours of operation - 9:00am and 9:00pm | 7 days a week.
 - No onsite consumption is proposed

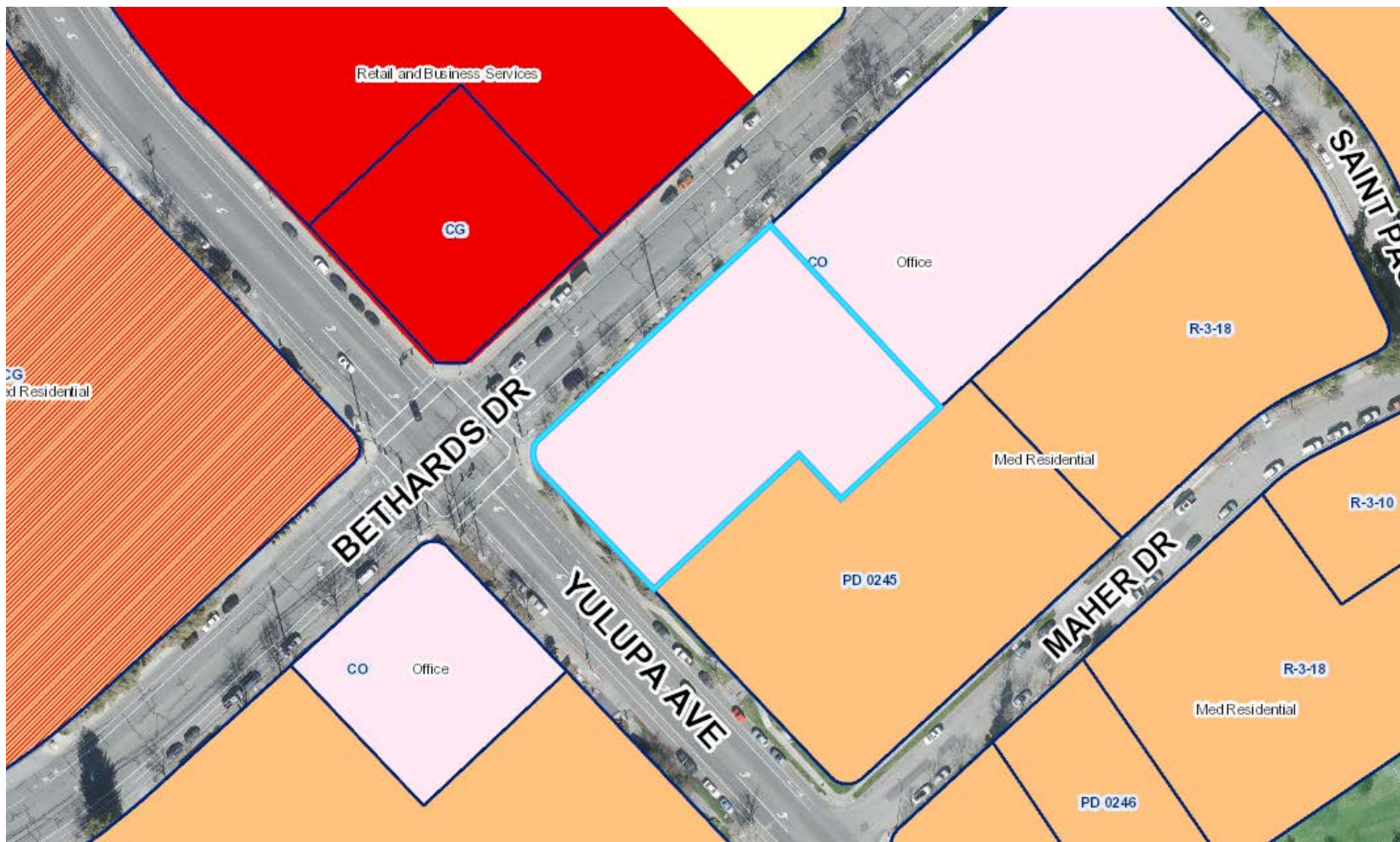
Project Location 2300 Bethards Drive



Project Location 2300 Bethards Drive



- On January 22, 2020, a Neighborhood Meeting was held to introduce the Project to neighbors.
- On December 5, 2019, an application was submitted requesting the approval of a Conditional Use Permit for a dispensary, providing delivery service and an onsite consumption area.
- On January 20, 2021, the scope of the Project was changed eliminating the onsite consumption area, leaving only the retail store with delivery service.



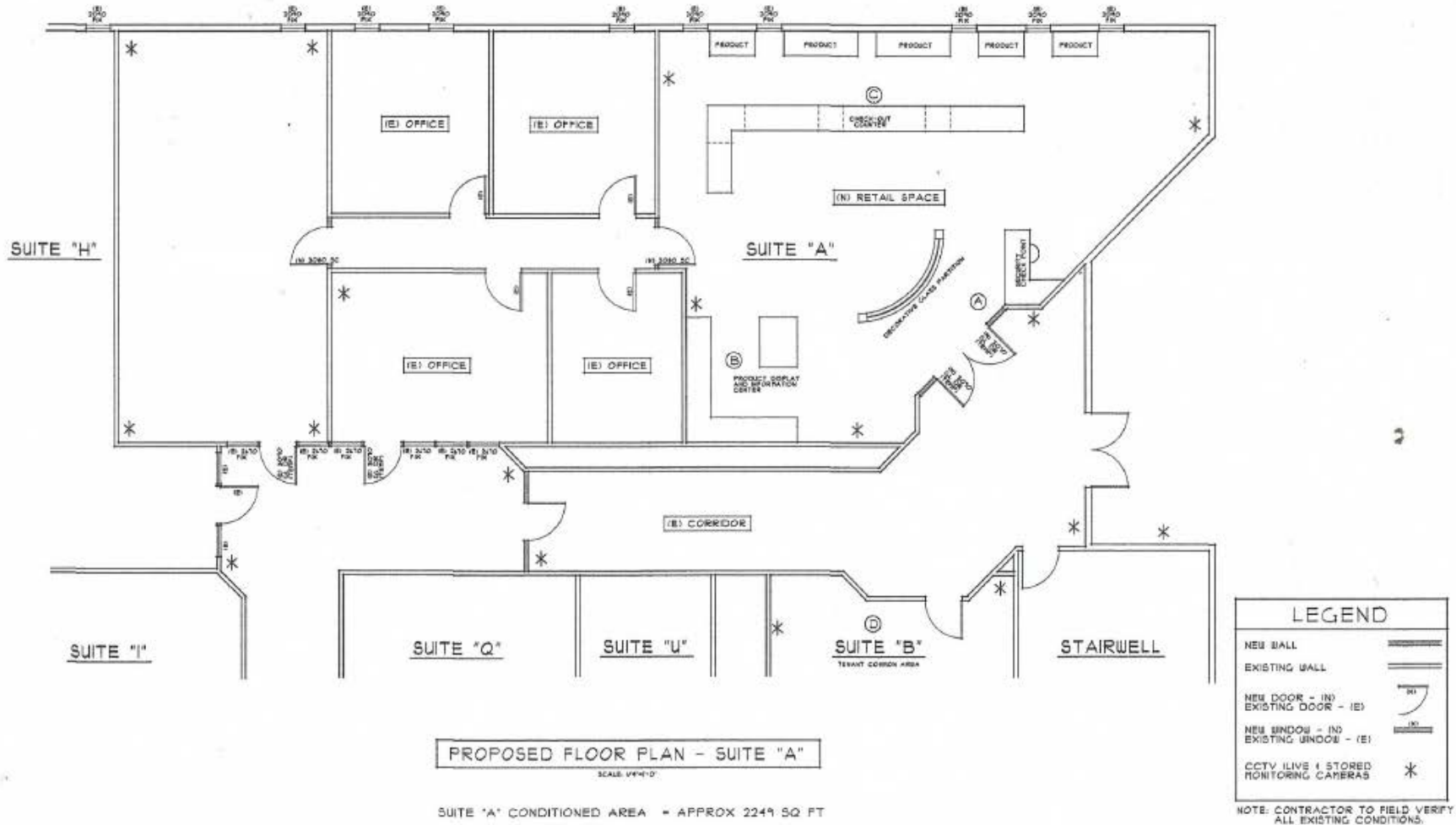


Table 1 – Trip Generation Summary

Land Use	Units	Daily		AM Peak Hour				PM Peak Hour			
		Rate	Trips	Rate	Trips	In	Out	Rate	Trips	In	Out
Existing											
General Office Building	2.249 ksf	9.74	-22	1.16	-3	-2	-1	1.15	-3	-0	-3
Proposed											
Marijuana Dispensary	2.249 ksf	252.70	568	*2.74	6	6	0	21.83	49	25	24
Net New Trips			546		3	4	-1		46	25	21

Notes: ksf = 1,000 square feet; *custom rate based on data collected in the City of Santa Rosa

- 1/250 for cannabis retail
- 1/250 most commercial office uses
- 72 parking spaces are required at full occupancy of 17,990 square-foot building
- Total of 63 spaces are provided
- Deficit of 9 parking spaces

- Chapter 20-36.040(C) when a building's use changes to a new use, without enlarging the space in which the use is located, there shall be no additional parking required for the new use, except that the new use shall comply with current ADA standards for parking, provided that any deficiency in parking is no more than ten spaces, or a 25 percent overall reduction from standard parking requirements, whichever is greater.

- There has been a lot of correspondence received from neighbors, both opposed to and in favor of the project.
 - Concerns over onsite consumption
 - Proximity to schools
 - Traffic Impacts
 - Parking deficit

- The Project was revised to exclude onsite consumption
- Closed school is Yulupa Elementary, which is 1,800 feet from the project site
- The Project will produce fewer than 50 peak hour trips and no further analysis is required per the City's *Standard Guidance for the Preparation of Traffic Impact Analysis*.

Environmental Review

California Environmental Quality Act (CEQA)

- The Project has been found in compliance with the California Environmental Quality Act (CEQA):
- CEQA Guidelines Section 15303, the Project is categorically exempt because it involves the conversion of an existing structure from one use to another where only minor modifications are made
- Pursuant to section 15183, the Project qualifies for streamlined review because it is consistent with the General Plan for which an Environmental Impact Report (EIR) was certified by Council in 2009.

The Planning and Economic Development Department recommends that the Planning Commission, by resolution, approve a Conditional Use Permit to allow a cannabis retail facility with delivery at 2300 Bethards Drive, Suite A, in Santa Rosa.

Adam Ross
Project Planner
Planning and Economic Development
aross@srcity.org
(707) 543-4705

