

DATE 4/20

DRAWN BY:
CHECKED BY:
REVISIONS: DATE:

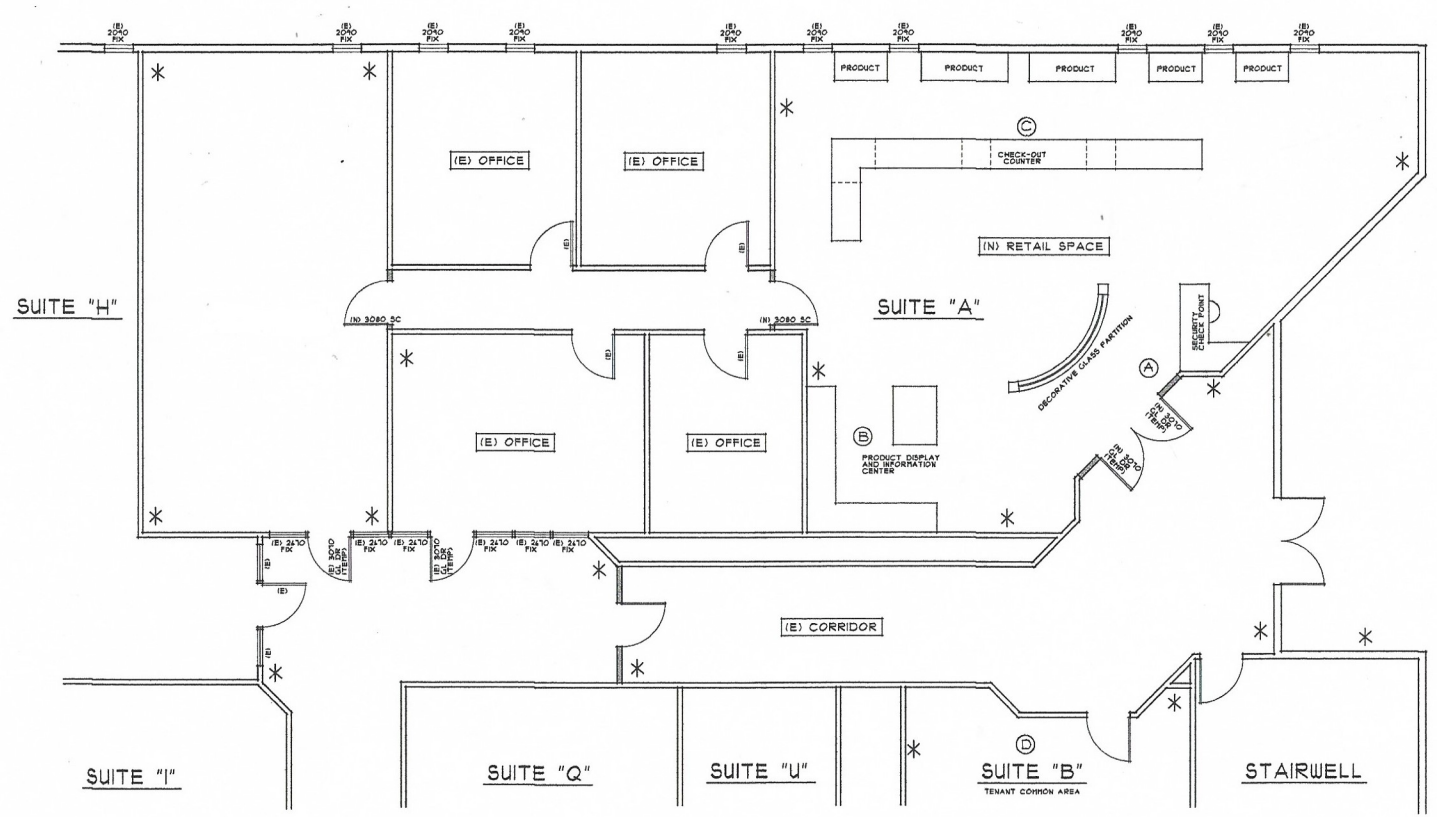
NOTES:
▲
▲
▲

FARRELL-FABER
& ASSOCIATES INC.
ARCHITECTURE - PLANNING

KAREN KISSLER
2300 BETHARDS DRIVE
SANTA ROSA, CALIFORNIA

DESIGN FOR
2000 FARRELL-FABER & ASSOC. INC.
FARRELL-FABER AND ASSOCIATES INC.
10000 TOWN CENTER DRIVE
SANTA ROSA, CA 95401
TEL: 707.578.3811
FAX: 707.578.2646
WWW.FARRELLFABER.COM

SHEET NO. 20011
2



PROPOSED FLOOR PLAN - SUITE "A"
SCALE: 1/4"=1'-0"

SUITE "A" CONDITIONED AREA = APPROX 2249 SQ FT

LEGEND

NEW WALL	=====
EXISTING WALL	-----
NEW DOOR - (N)	⤵
EXISTING DOOR - (E)	⤵
NEW WINDOW - (N)	⎓
EXISTING WINDOW - (E)	⎓
CCTV (LIVE & STORED MONITORING CAMERAS)	*

NOTE: CONTRACTOR TO FIELD VERIFY ALL EXISTING CONDITIONS.