

# Holly Hock Subdivision Tentative Map Time Extension

File Number: EXT23-0001

1650 Meda Avenue

---

August 24, 2023

Jandon Briscoe, City Planner Trainee  
Planning and Economic Development

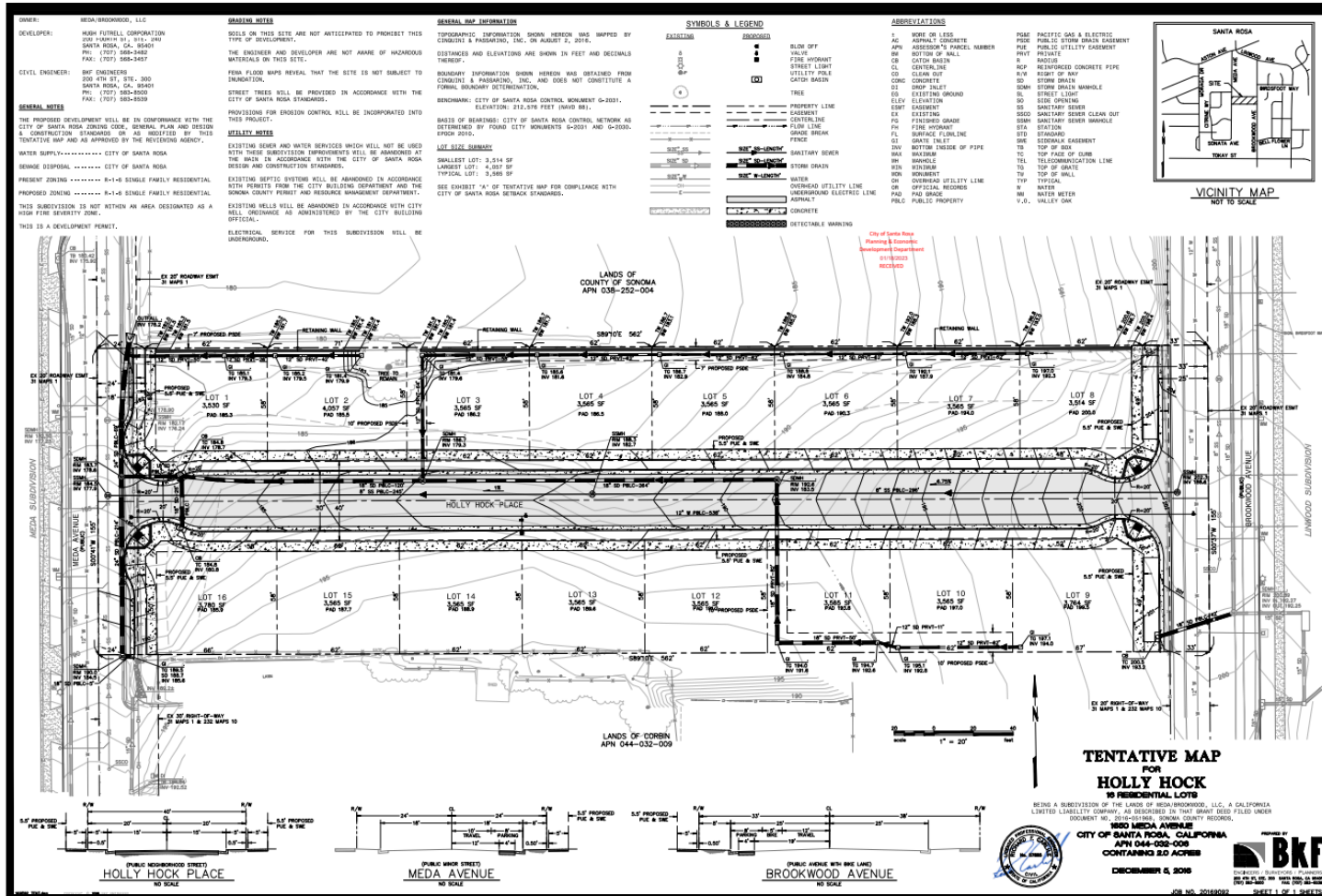
On August 10, 2017, the Planning Commission approved the Holly Hock Tentative Map, which is a 16-lot subdivision located on 2 acres at 1650 Meda Avenue.

### Before the Planning Commission

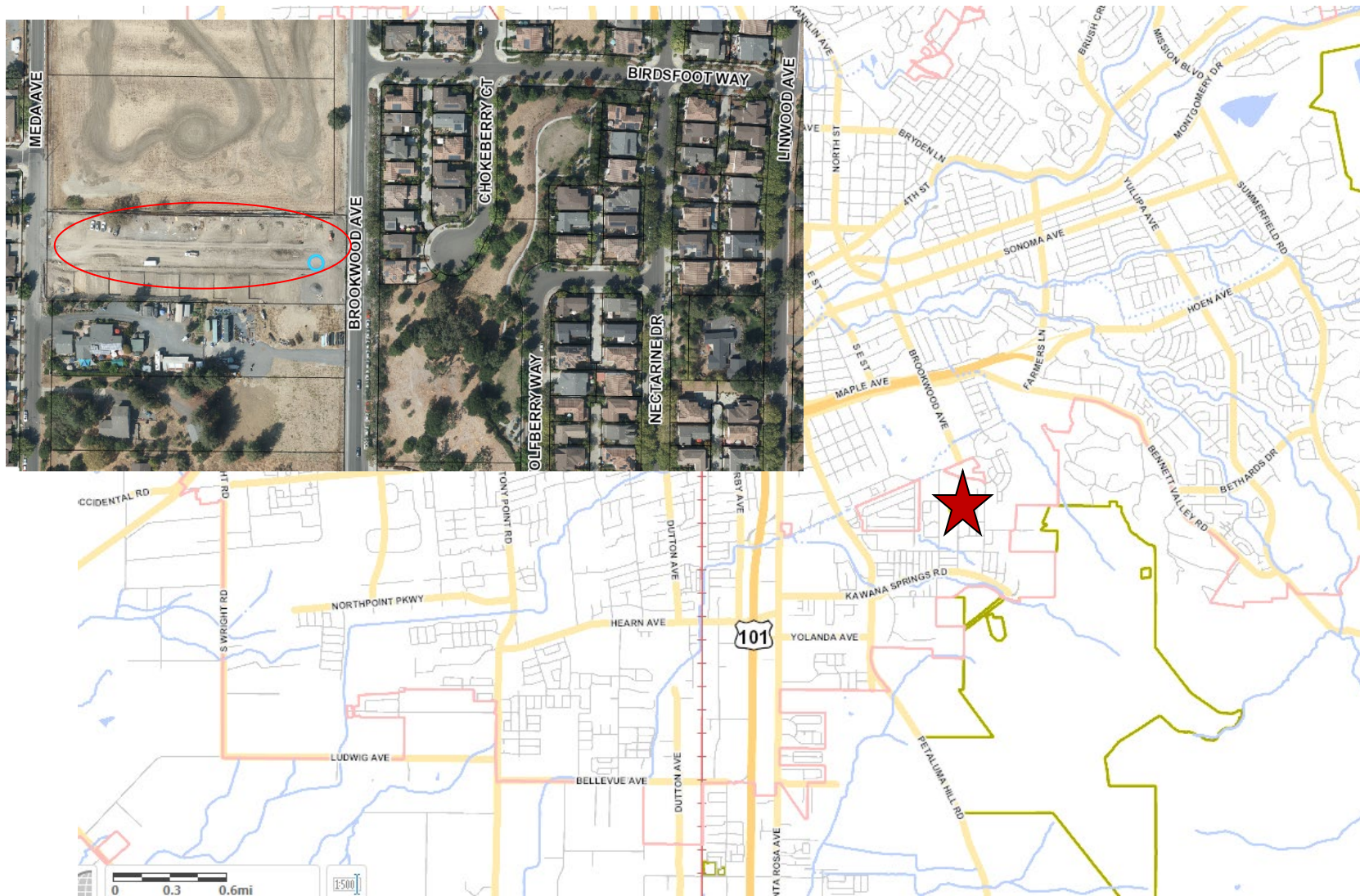
- One-year Time Extension
- Extended expiration from February 8, 2023, to February 8, 2024.

- On August 10, 2017, the Planning Commission, by resolution, approved the Tentative Map and Conditional Use Permit for Holly Hock Subdivision.
- Prior to expiration, the applicant submitted an entitlement on January 18, 2023, to extend the tentative map for one year.

# Approved Tentative Map

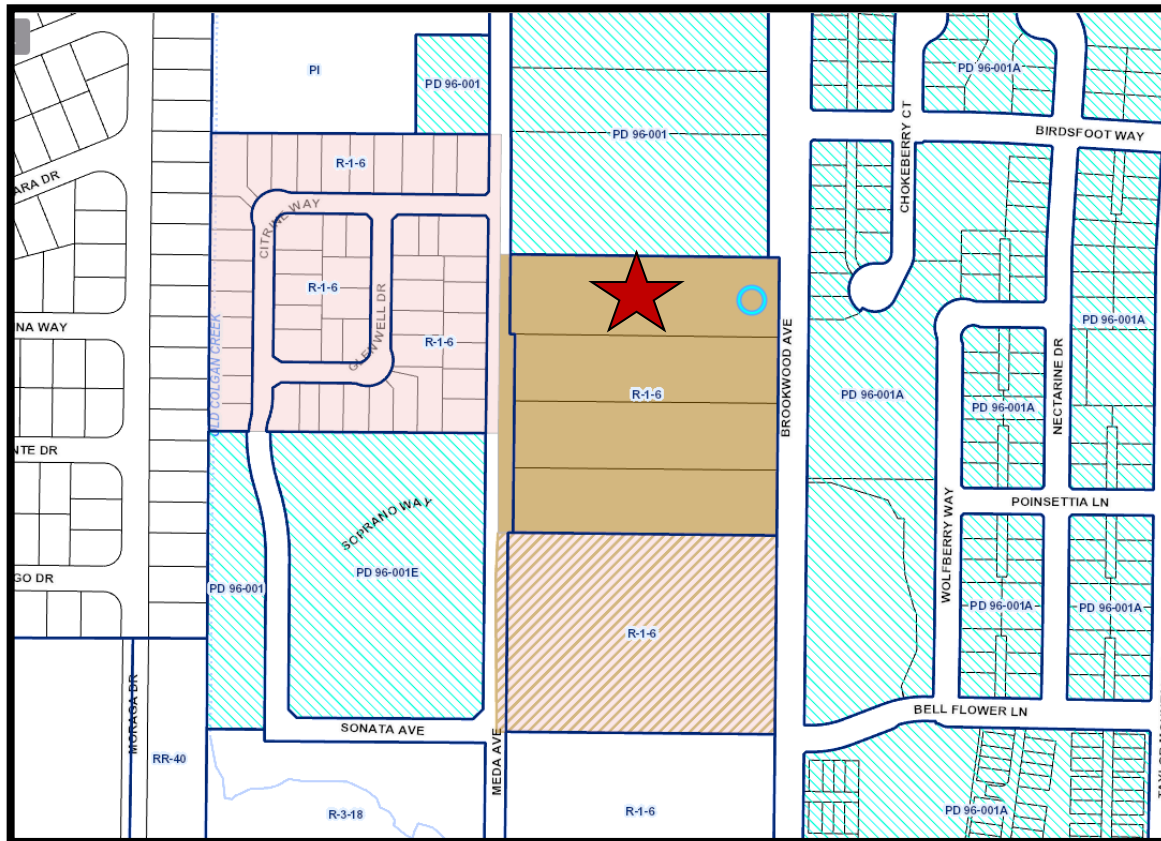


# 1650 Meda Avenue – Aerial View



**Zoning: R-1-6**

**General Plan: Low Density Residential**



# Environmental Review

## California Environmental Quality Act (CEQA)

---

- CEQA Guidelines 15183, for the project is consistent with the General Plan.
- CEQA Guidelines Section 15332 since the project qualifies as in-fill development.

It is recommended by Planning and Economic Development Department that the Planning Commission approve a one-year time extension for the Holly Hock Tentative Map, extending the expiration date to February 8, 2024.



Jandon Briscoe, City Planner Trainee  
Planning and Economic Development  
[jbriscoe@srcity.org](mailto:jbriscoe@srcity.org)  
(707) 543-3236

