

Community Pipeline Safety Initiative

Santa Rosa City Council

May 31, 2016



Improving Pipeline Safety and Reliability

- PG&E's top priority is the safety of our customers and communities – we are testing, studying and upgrading our gas system, including:
 - **Hydrostatic pressure testing** which verifies the pipeline's strength and safe operating pressure
 - **Internal pipe inspection robots** to check for signs of corrosion
 - **Valve automation** to allow faster response during gas emergencies
 - **Leak survey** of our entire gas pipeline system more frequently
 - **Aerial and ground patrols** to identify any excavations, signs of construction and other potential safety concerns



Program at a Glance

WHAT WE'RE DOING



Checking the area above the gas transmission pipeline for trees and structures that pose an emergency access or safety concern



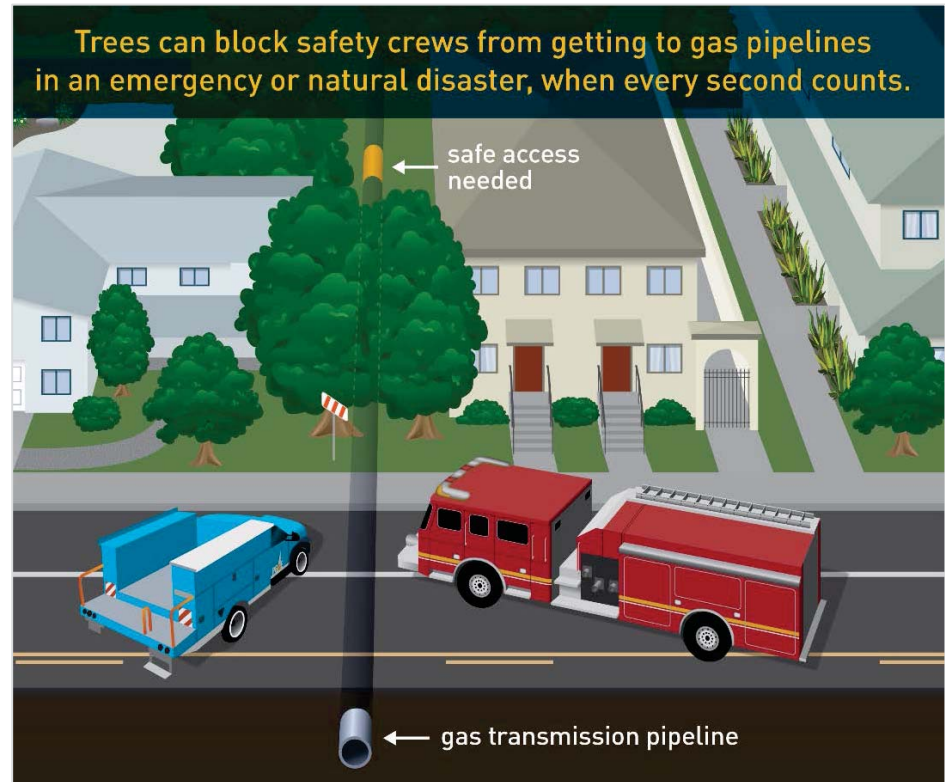
Helping to ensure immediate access for safety crews, and preventing potential damage to the pipe



Working with our customers and communities where a safety risk has been identified to develop shared solutions



Planting new trees at a safe distance from the pipeline and restoring the area to preserve the natural beauty of our communities



Working with First Responders

"Keeping Novato safe is my number one priority every day. PG&E is a partner in helping my department keep this community safe by safely maintaining our energy infrastructure, providing easy access to gas pipelines and training our first responders so they can respond effectively to emergency situations near utilities."

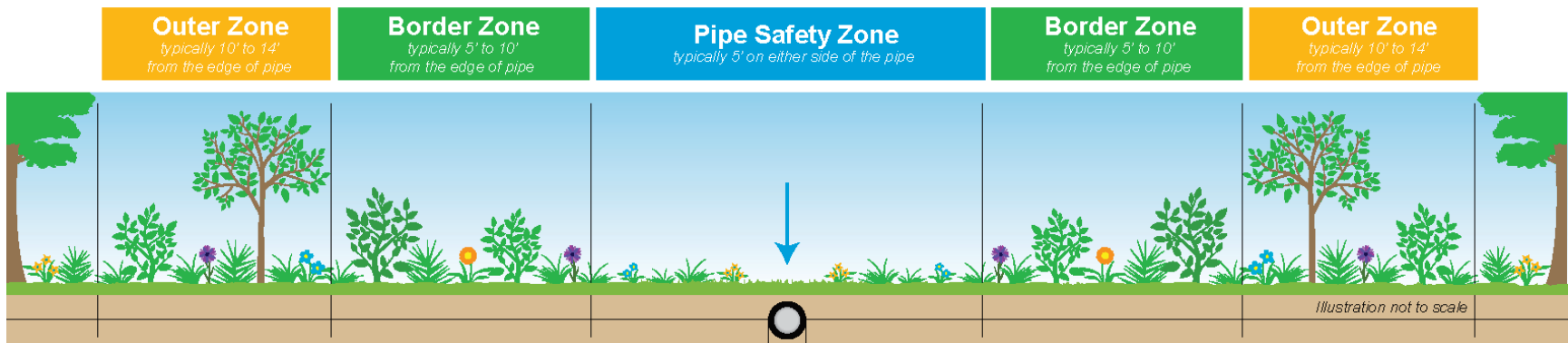
**Mark Heine, Fire Chief,
Novato Fire Protection District**



First responders depend on immediate access in an emergency

Guide to Safe Landscaping

Making sure the right plants and trees are located in the right location adds to the safety and natural beauty of your community



| | |
|-------------------------|--|
| Pipe Safety Zone | Lawns, flowers, low-profile grasses and low-growing herbaceous plants work well within the Pipe Safety Zone. |
| Border Zone | Small to medium shrubs with a trunk or main branch less than 8" in diameter at full maturity work well within the Border Zone. Diameter is measured 4.5 feet above the ground. |
| Outer Zone | Large shrubs and small trees with a trunk or main branch less than 36" in diameter at full maturity work well within the Outer Zone. Diameter is measured 4.5 feet above the ground. |

Please note easement widths can vary and the above represents best practices and guidance for safe landscaping near gas pipelines.

Tree-by-Tree Review

- We understand how important trees are to your community and the environment
- To ensure we are only replacing trees that pose an emergency access or safety concern, we conduct a review of all trees near the gas pipelines
- The review is completed by gas safety experts and involves analyzing such factors as tree height, species and distance from the pipe
- We share the results with the county or property owner and, together, work to develop a path forward



Tree Replacement and Restoration

- When a tree needs to be replaced for safety reasons, PG&E will work with the private property owner to offer the following:
 - **Replacement:** Provide replacement tree(s) or an in-lieu payment for each tree removed
 - **Restoration:** Work together to develop a landscape plan that restores the area with native, drought-tolerant landscaping such as grasses, mulch or bark
- We recognize every customer and yard is different, and we will address special circumstances on a case-by-case basis



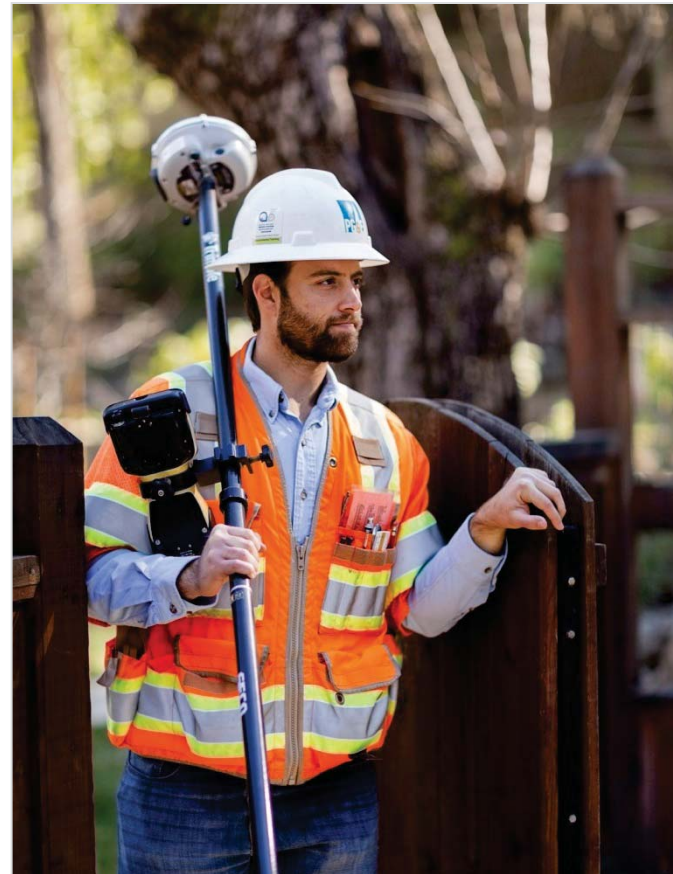
Community Partnership and Outreach

- It is important to us that our customers and communities fully understand and support this safety work
- Our outreach includes:
 - Meeting with community leaders to discuss the safety risks and work together to plan for gas safety work in public areas
 - Communicating about gas pipeline safety and the planned work to nearby residents prior to any work taking place
 - Contacting private property owners regarding any safety work proposed for their property
- We will not move forward with any planned work until we have a signed agreement in place with the customer



Contact Information

- For questions regarding the upcoming pipeline safety work, please contact Greg Gillis, Local Customer Outreach Specialist, at **1-415-815-7286** or by email at **greg.gillis@pge.com**
- For more information, visit us at **pge.com/GasSafety**
- To view an online map of our natural gas transmission pipelines, please go to **pge.com/pipelinelocations**



Thank You

