

Avira Apartments Design Review DR21-051

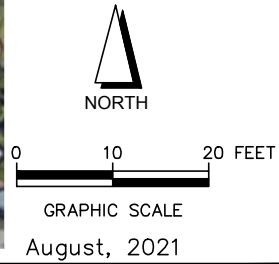


11/9/2021

Scale 1: 2,400



File: T:\2018 PROJECTS\18278\DWG\ADOBE-DESIGN\DESIGN REVIEW\18278-VICINITY MAP.DWG, 8/19/2021 3:38:25 PM, Zoachory Ruiz



City of Santa Rosa

VICINITY MAP

Planning & Economic
Development Department

Aug 27, 2021

RECEIVED

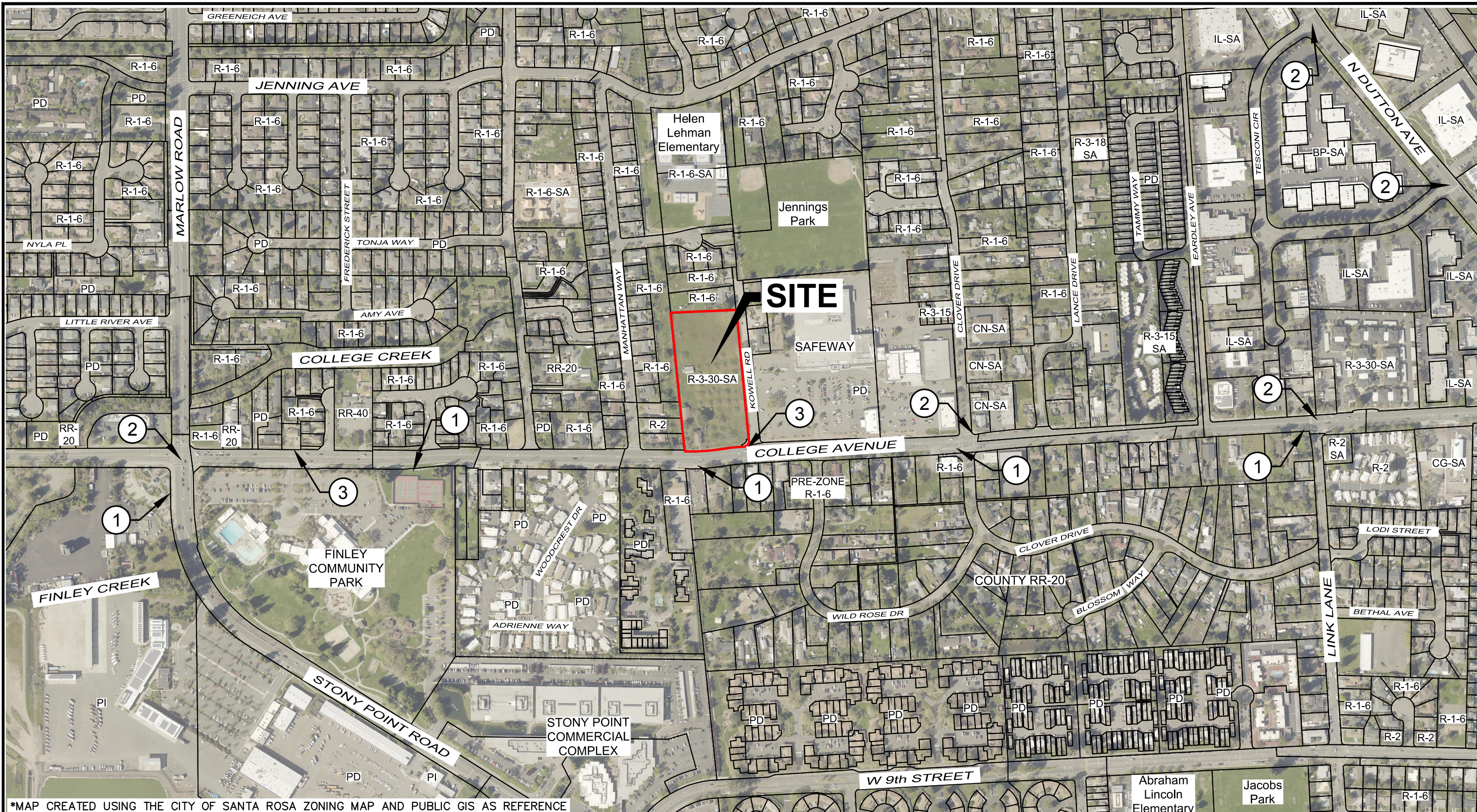
Aviara Apartments
1385 West College Ave, Santa Rosa, CA

adobe associates, inc.
civil engineering | land surveying | wastewater

1220 N. Dutton Ave., Santa Rosa, CA 95401
P. (707) 541-2300 F. (707) 541-2301
Website: www.adobeinc.com

"A Service You Can Count On!"

File: T:\2018 PROJECTS\18278\DWG\ADOB-DESIGN\DESIGN REVIEW\EXHIBITS\18278_NEIGHBORHOOD CONTEXT & SITE ANALYSIS MAP.DWG, 8/19/2021 3:40:26 PM, Zachary Ruiz



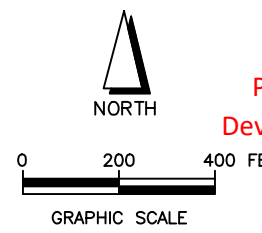
*MAP CREATED USING THE CITY OF SANTA ROSA ZONING MAP AND PUBLIC GIS AS REFERENCE

KEY NOTES:

- ① BUS STOP
- ② SIGNALIZATION
- ③ BICYCLE LANE

ZONING CODE ABBREVIATIONS:

- BP BUSINESS PARK
- GC GENERAL COMMERCIAL
- CN NEIGHBORHOOD COMMERCIAL
- IL LIGHT INDUSTRIAL
- PD PLANNED DEVELOPMENT
- PI PUBLIC / INSTITUTIONAL
- R LOW-HIGH DENSITY RESIDENTIAL
- RR RURAL RESIDENTIAL



SITE ANALYSIS & NEIGHBORHOOD CONTEXT MAP

City of Santa Rosa
 Planning & Economic
 Development Department
 Aug 27, 2021
 RECEIVED

Aviara Apartments
 1385 West College Avenue, Santa Rosa, CA

August, 2020



1220 N. Dutton Ave., Santa Rosa, CA 95401
 P. (707) 541-2300 F. (707) 541-2301
 Website: www.adobeinc.com

"A Service You Can Count On!"