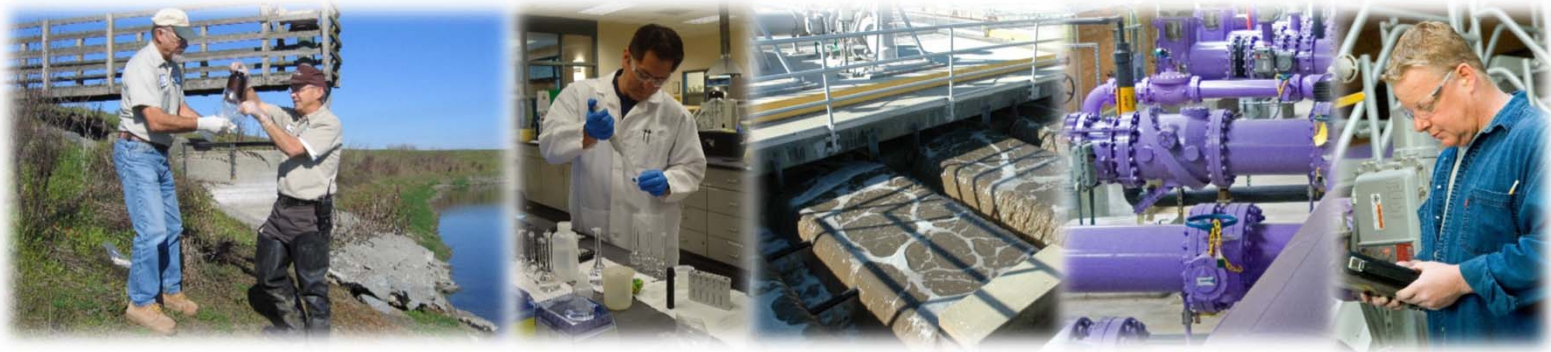


PRELIMINARY 2017/18 REGIONAL WATER REUSE SYSTEM BUDGET AND ALLOCATION OF COSTS



City Council
April 18, 2017

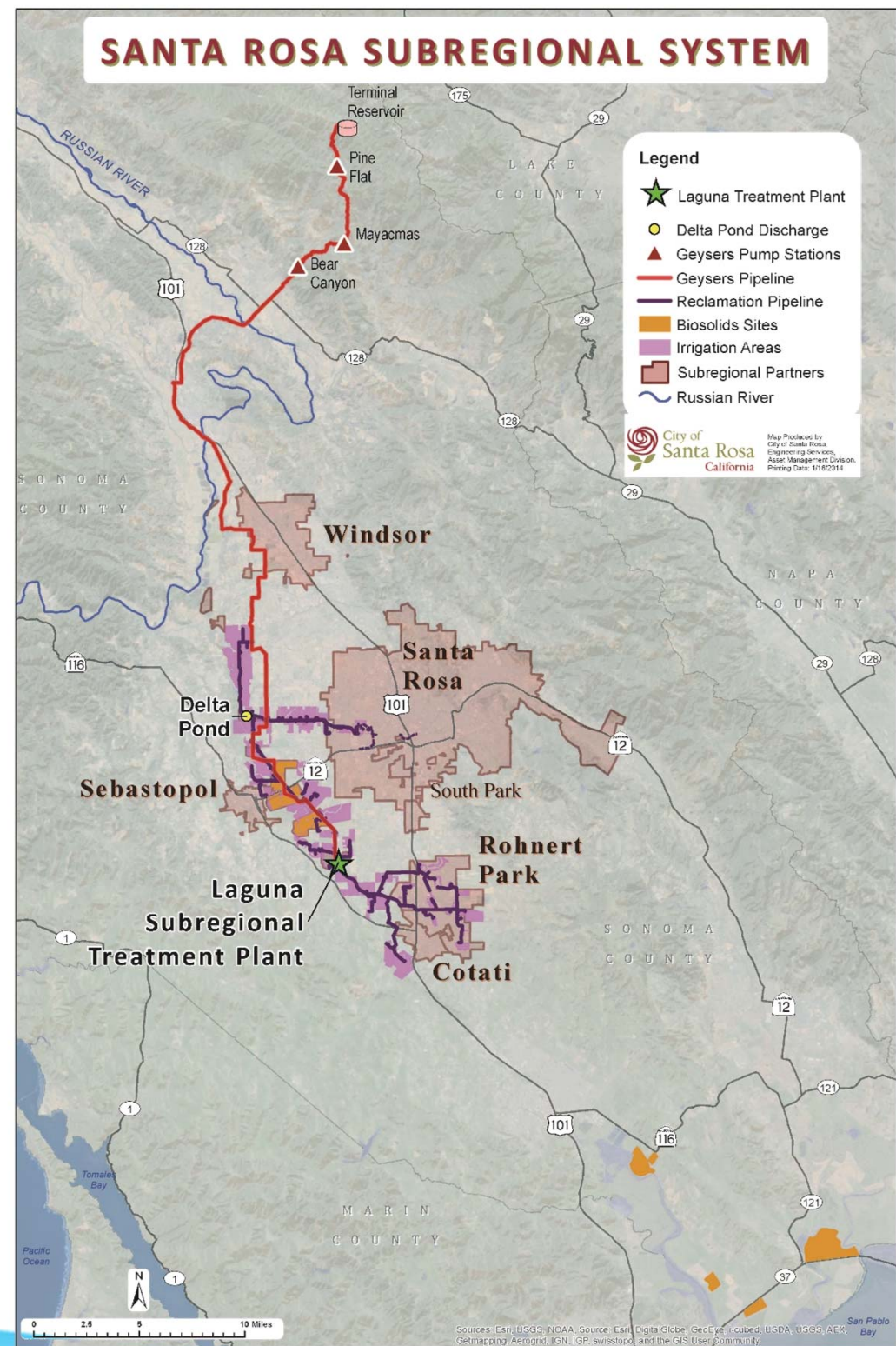
Linda Reed,
Deputy Director – Water Administration



Santa Rosa Water | Our Future in Every Drop

Subregional System & Wastewater Treatment Plant – Subregional Agreement:

- Santa Rosa
- Rohnert Park
- Cotati
- Sebastopol
- South Park County Sanitation District



Subregional Budget Review Timeline

- 3/9 - Preliminary TAC review of the O&M and CIP requests and preliminary allocations
- 3/16 - Board of Public Utilities Study Session – all Santa Rosa Water and Subregional O&M and CIP
- 4/6 - TAC recommendation to BPU
- 4/6 - BPU recommendation to City Council
- 4/18 - City Council Subregional budget preliminary approval
- 5/1 - Notify User Agencies of operating and debt requirements

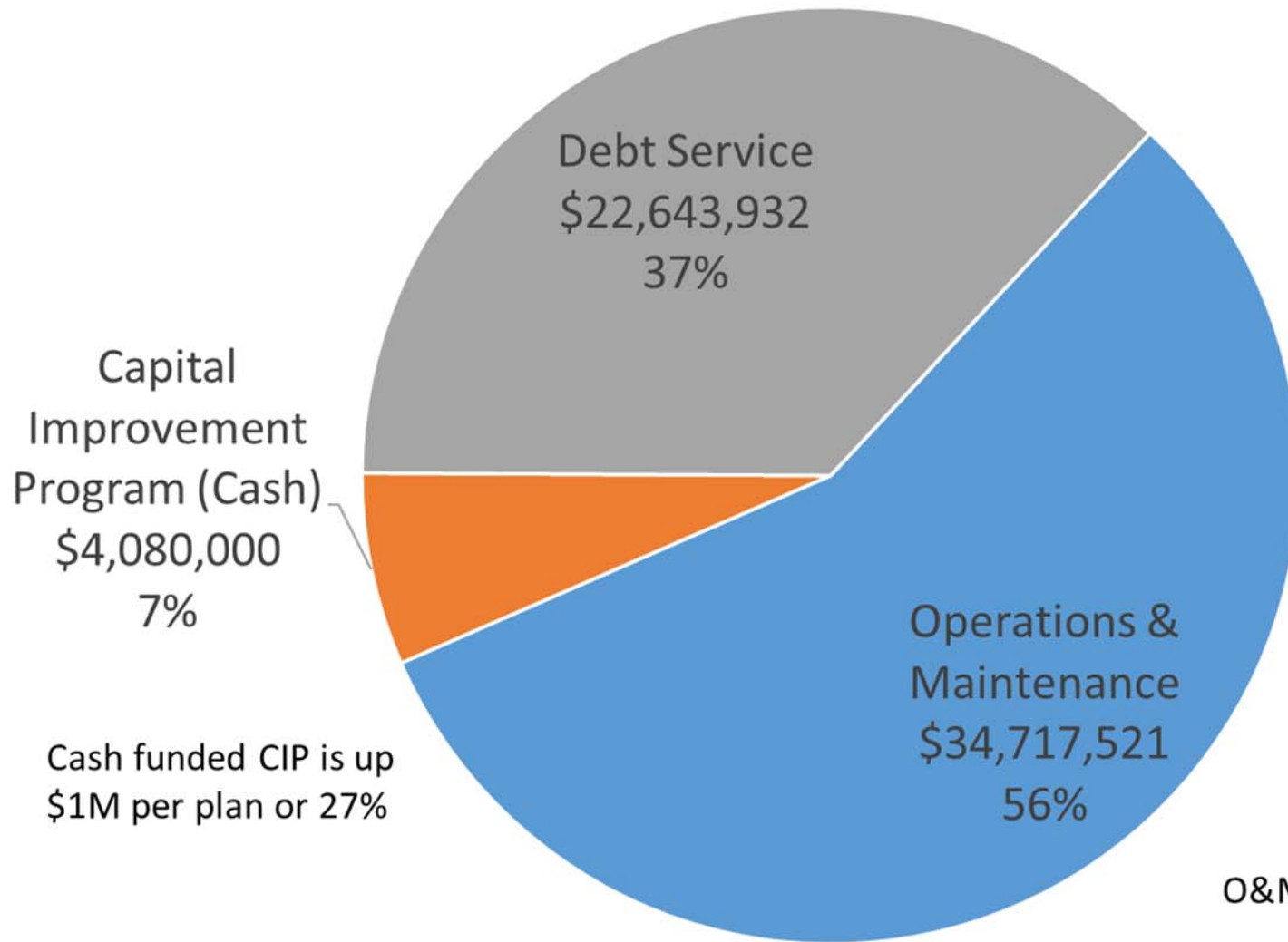


Subregional Operating Expenditures Assure:

- Wastewater treatment operations, recycled water distribution, and biosolids disposal
- NPDES permit compliance activities including monitoring and reporting
- Mandated air quality permitting, monitoring, and reporting activities
- Hazardous materials and waste disposal permitting, monitoring, and reporting activities



Regional Water Reuse Expenses

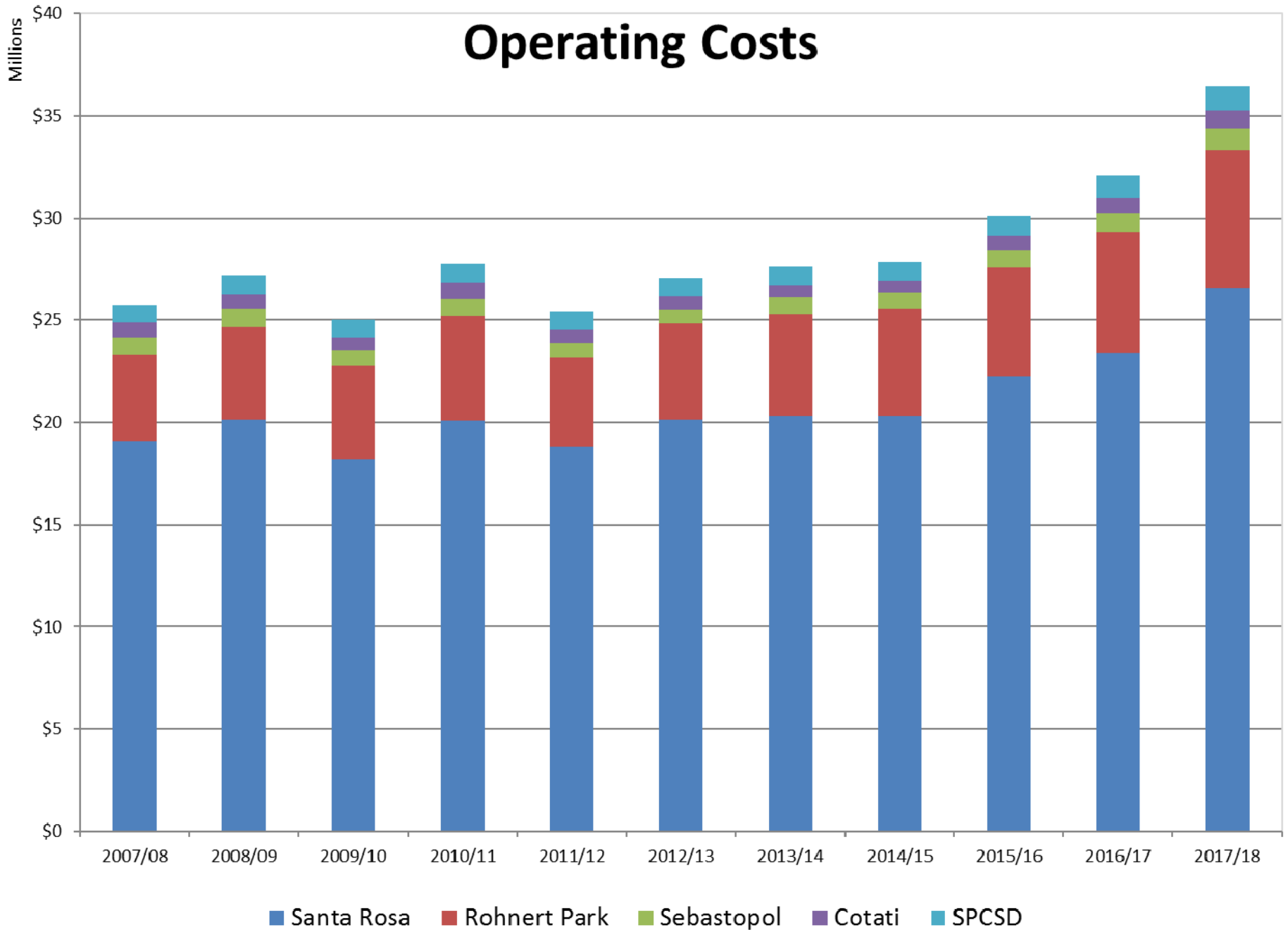


Regional Water Reuse Budget Review

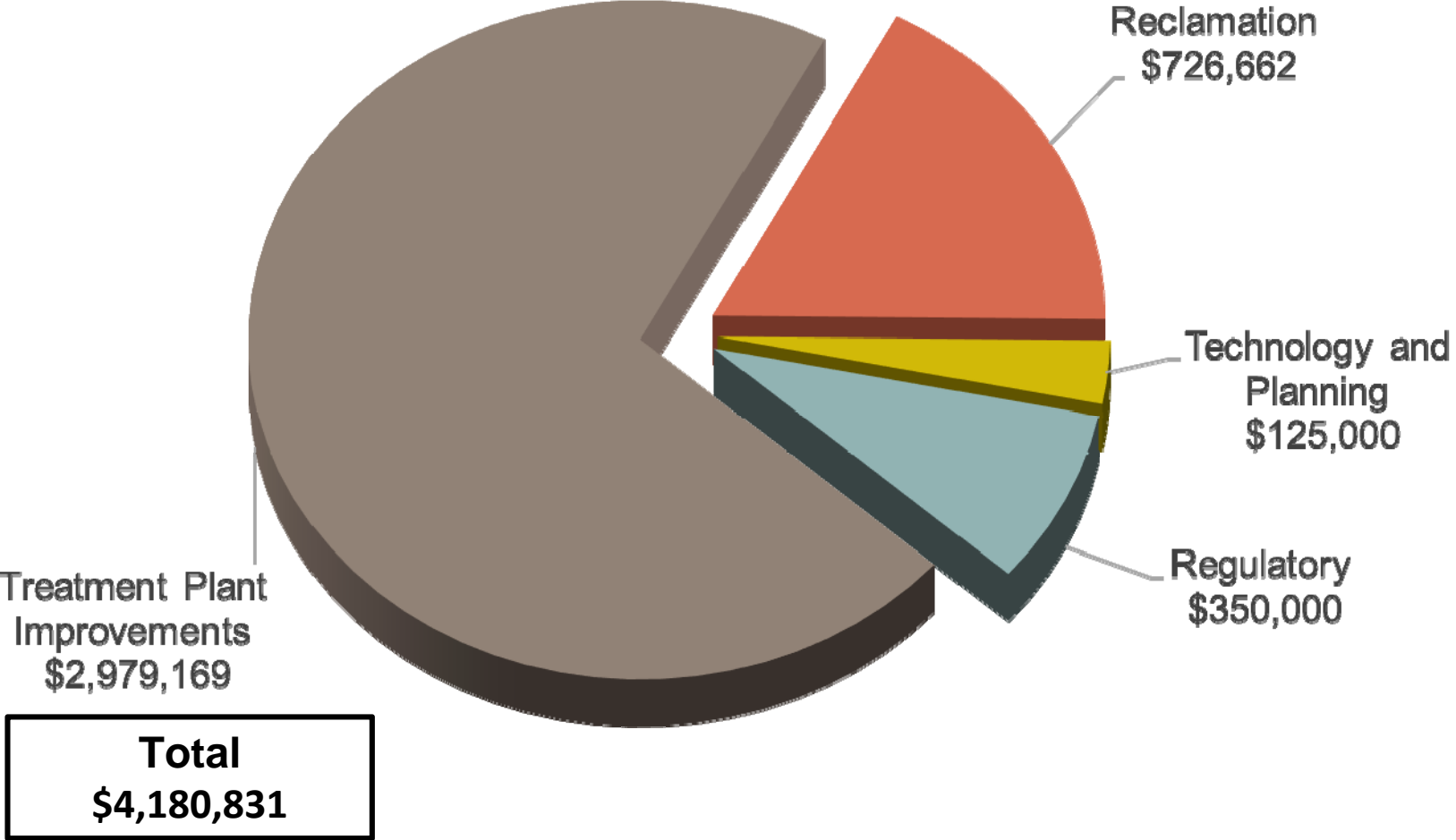
- Operations and Maintenance request up \$2.8 million or 8.7%
- Cash funded CIP request up 27% per \$1 million annual increase
- Combined Flow Based Allocation up 13.7%
- Debt Service Allocation up 9.8% from 2016/17
 - Was down 18% in 2016/17



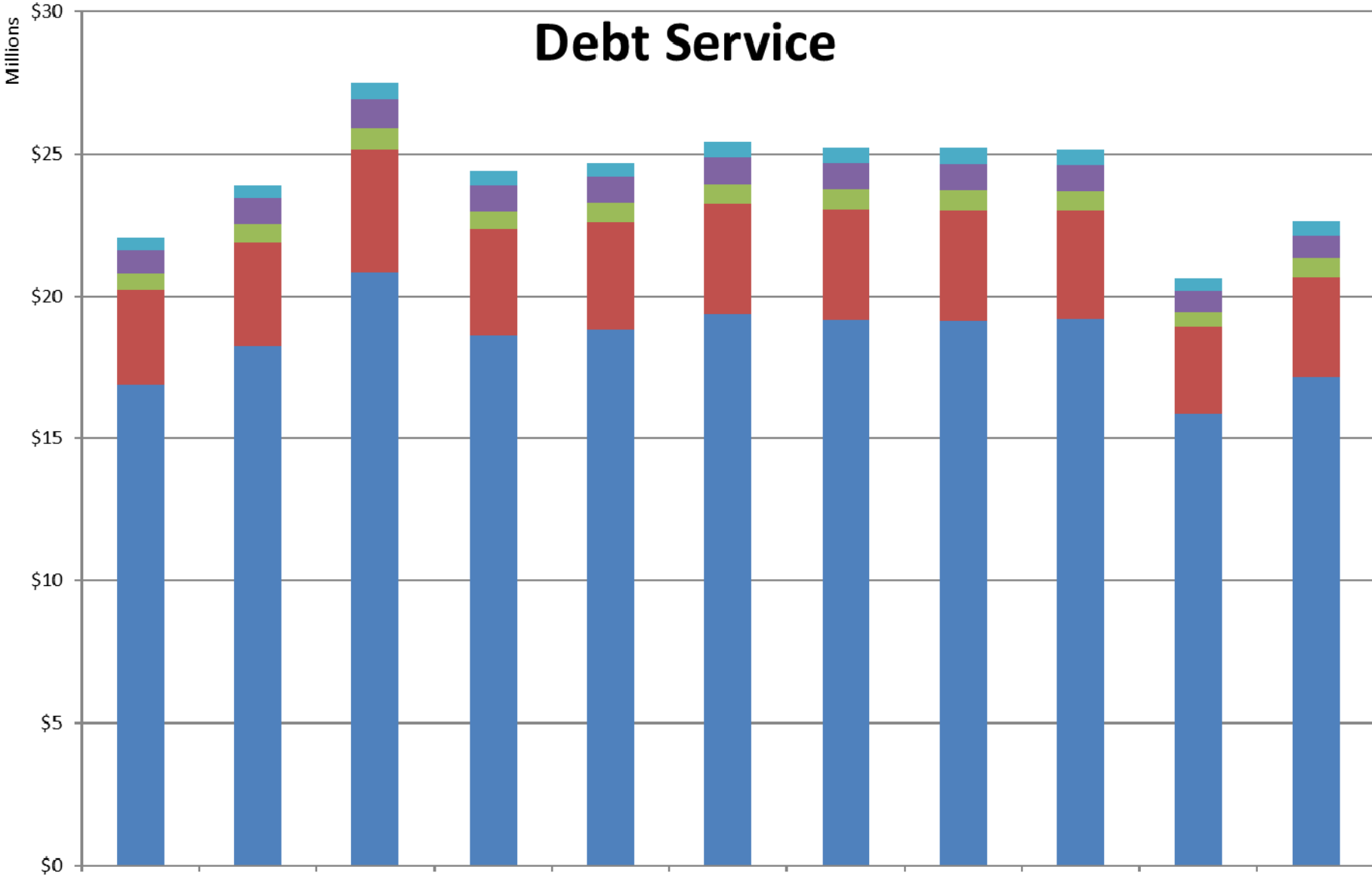
Operating Costs



Santa Rosa Water 2017-18 CIP Proposed Subregional



Debt Service



■ Santa Rosa ■ Rohnert Park ■ Sebastopol ■ Cotati ■ SPCSD

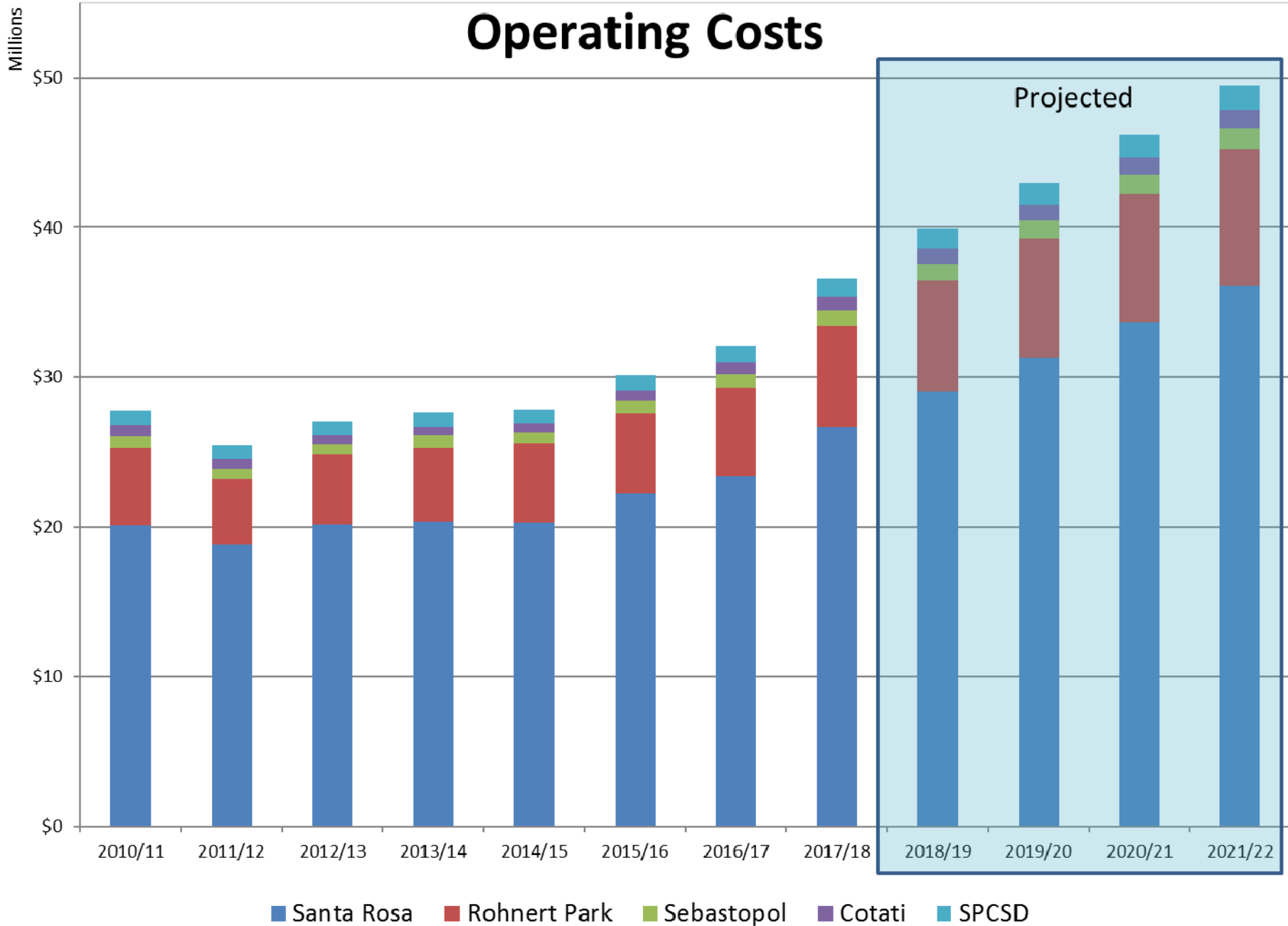
Proposed Allocation and Offset

2017/18										
	O&M Contribution	% of Total	Debt Service	% of Total	Total	Apply Retained Refund	Total less rate smoothing	\$ Change from 2016/17	% Change from 2016/17	% from each Agency - total
Santa Rosa	\$26,571,169	72.89%	\$17,177,726	75.86%	43,748,894	0	43,748,894	4,533,761	10.94%	74%
Rohnert Park	\$6,751,242	18.52%	\$3,485,166	15.39%	10,236,408	624,906	9,611,503	457,691	5.00%	17%
Sebastopol	\$1,024,352	2.81%	\$655,866	2.90%	1,680,218	85,538	1,594,680	75,937	5.00%	3%
Cotati	\$907,699	2.49%	\$836,028	3.69%	1,743,728	62,078	1,681,650	80,079	5.00%	3%
SPCSD	\$1,199,330	3.29%	\$489,146	2.16%	1,688,475	88,369	1,600,107	76,196	5.00%	3%
	\$36,453,792	100.00%	22,643,932	100.00%	59,097,724	860,890	58,236,833	5,223,663	9.45%	100%

Remaining Retained Contributions

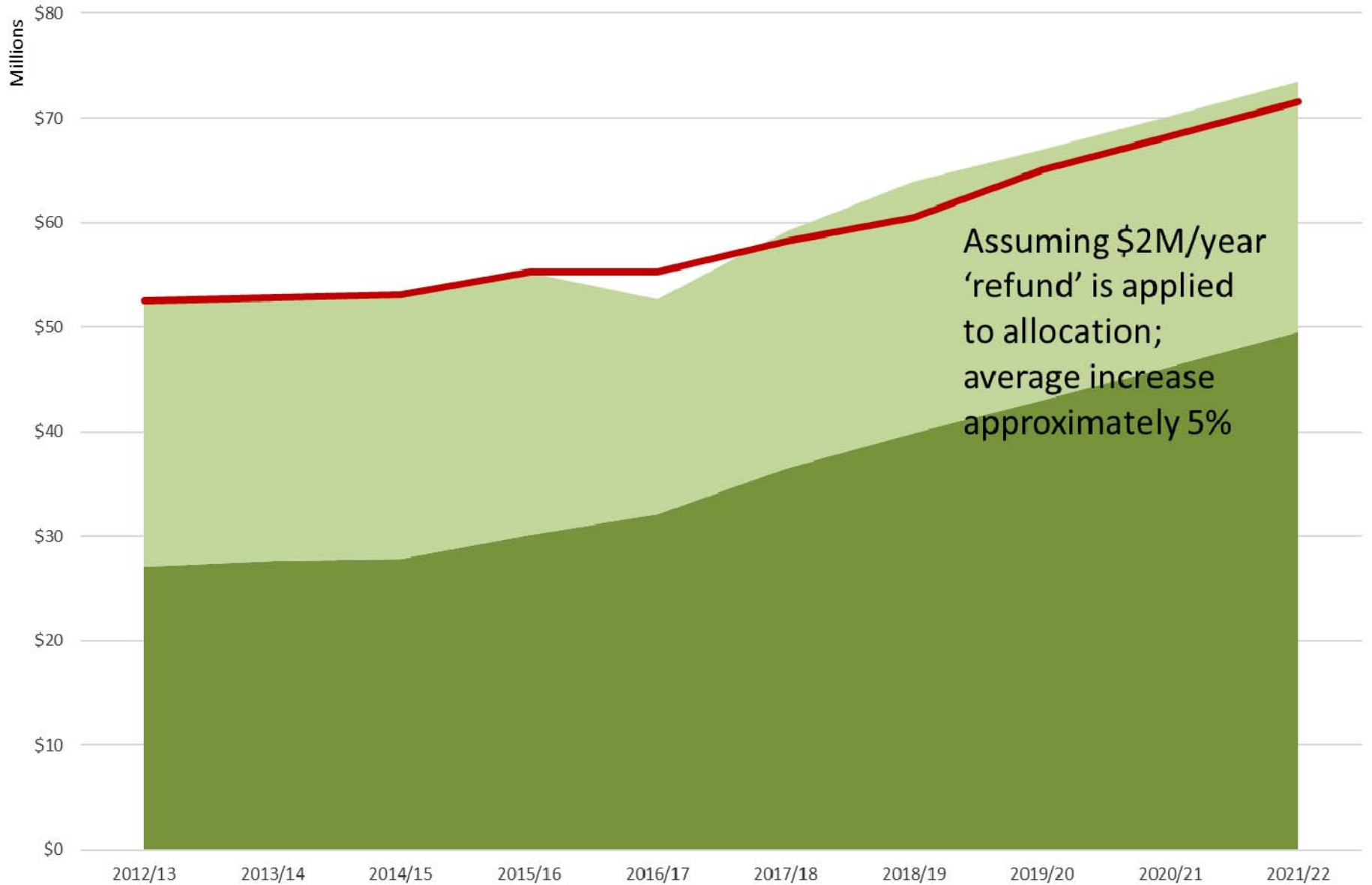
	2015/16 Refund + Change in DS Reserve Amounts	Billed in 2016/17 for Rate Smoothing	2014/15 Retained Refund	Total	Total Remaining
Santa Rosa	\$2,516,051	\$0		\$2,516,051	\$2,516,051
Rohnert Park	\$243,238	\$158,321	\$727,419	\$1,128,978	\$504,072
Sebastopol	\$88,475	\$105,398	\$78,612	\$272,485	\$186,947
Cotati	\$30,489	\$32,922	\$11,016	\$74,426	\$12,348
SPCSD	\$115,521	\$46,651	\$132,955	\$295,127	\$206,758
	\$2,993,773	\$343,292	\$950,002	\$4,287,067	\$3,426,177

Operating Costs



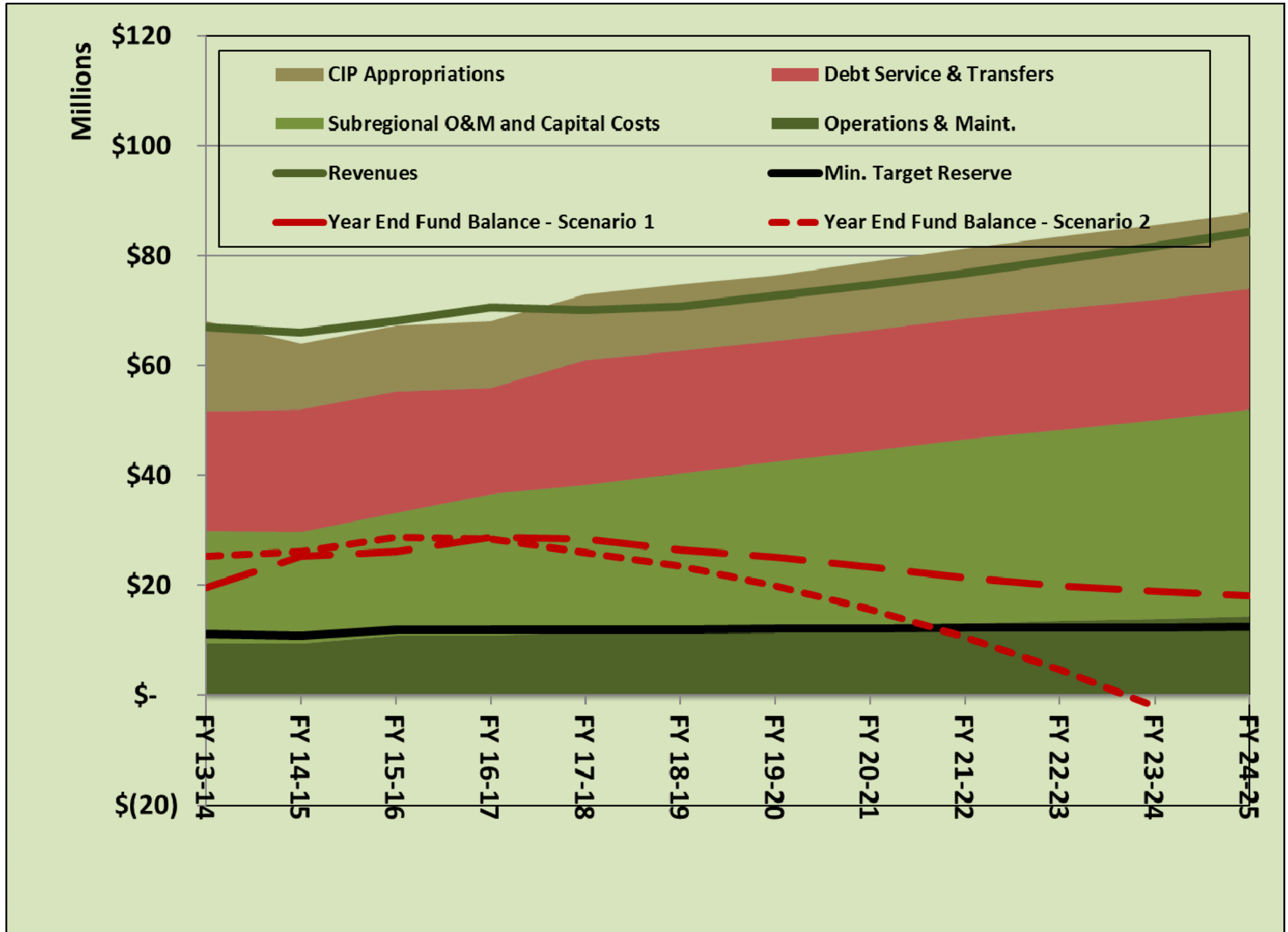
Regional Water Reuse Allocation History and Projection

O&M Allocation Debt Service Agency Contributions



Assuming \$2M/year 'refund' is applied to allocation; average increase approximately 5%

Long Range Financial Plan – Wastewater Enterprise Fund



DISCUSSION / QUESTIONS?



Santa Rosa Water | Our Future in Every Drop

CONNECT WITH US!

CALL: 707.543.4200

EMAIL: SRWATER@SRCITY.ORG

VISIT: SRCITY.ORG/WATER



Santa Rosa Water | Our Future in Every Drop