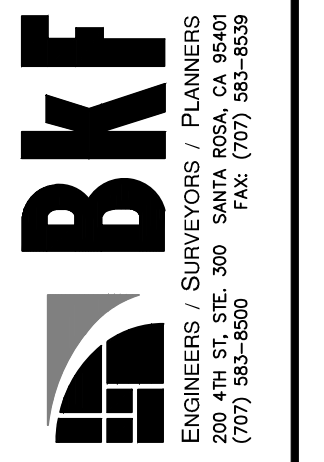


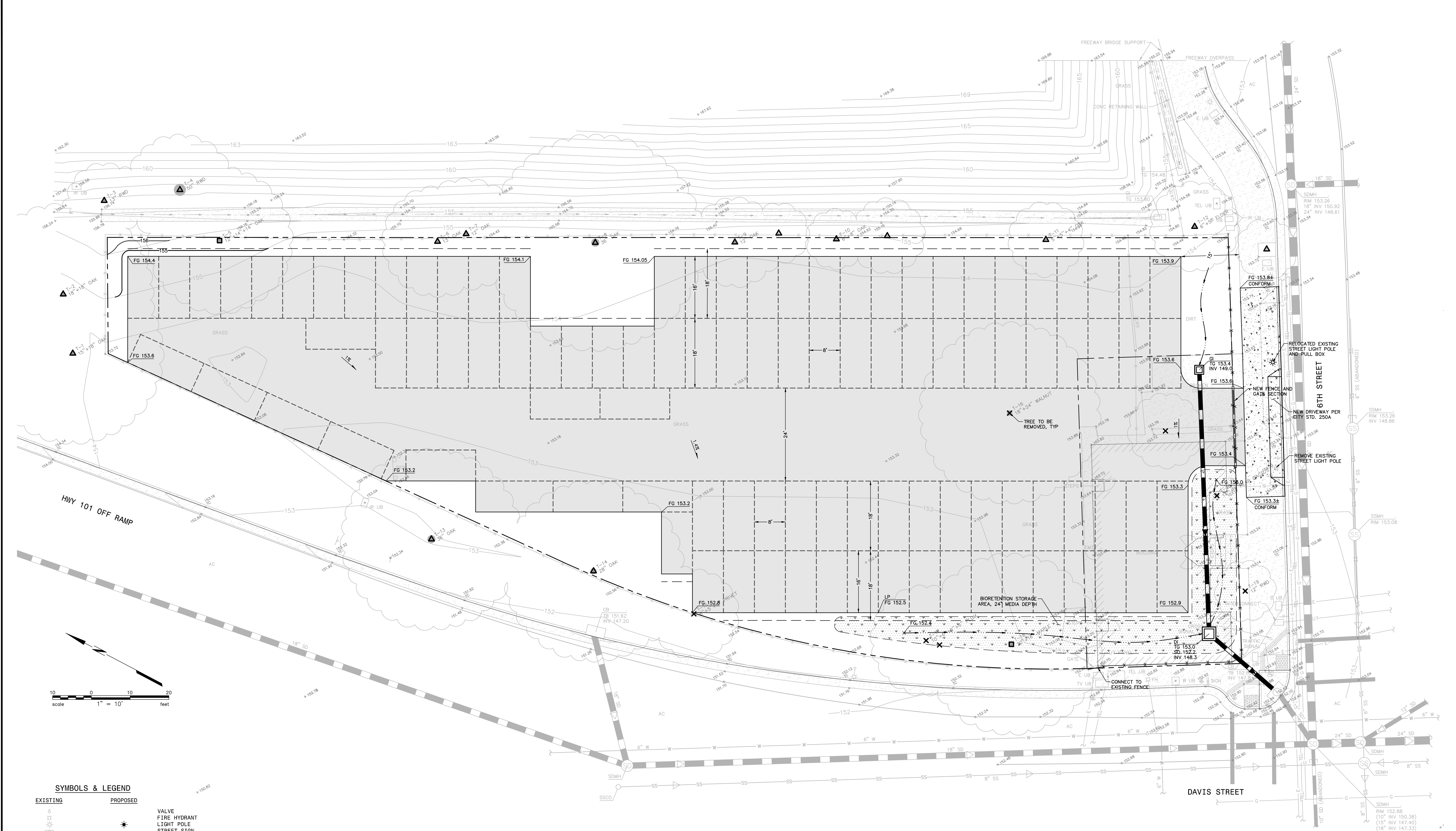
PRELIMINARY
NOT FOR CONSTRUCTION
DATE: 04/12/2017
RICHARD F. CARILLE C 57885



**6TH STREET AND DAVIS STREET
APN 010-086-008 & 014
6TH ST & 510 DAVIS ST, SANTA ROSA, CALIFORNIA**

PRELIMINARY GRADING AND DRAINAGE PLAN

Revisions	
No.	Description



SYMBOLS & LEGEND

EXISTING	PROPOSED	DESCRIPTION
		VALVE
		FIRE HYDRANT
		LIGHT POLE
		STREET SIGN
		UTILITY POLE
		GUY ANCHOR
		DROP INLET
		CATCH BASIN
		TREE
		TREE CLUSTER
		TREE TO BE REMOVED
		PROPERTY LINE
		EASEMENT
		GRADE BREAK
		FLOW LINE
		FENCE
		SANITARY SEWER
		STORM DRAIN
		WATER
		OVERHEAD UTILITY LINE
		UNDERGROUND UTILITY LINE
		UNDERGROUND ELECTRIC LINE
		UNDERGROUND GAS LINE
		UNDERGROUND TELECOM LINE
		ASPHALT
		CONCRETE
		DETECTABLE WARNING
		BIORETENTION AREA

ABBREVIATIONS

±	MORE OR LESS	SDMH	STORM DRAIN MANHOLE
AC	ASPHALT CONCRETE	SL	STREETLIGHT
APN	ASSESSOR'S PARCEL NUMBER	SS	SANITARY SEWER
BLDG	BUILDING	SSCO	SANITARY SEWER CLEAN OUT
CONC	CONCRETE	SSMH	SANITARY SEWER MANHOLE
DI	DROP INLET	STD	STANDARD
DW	DRIVEWAY	TB	TOP OF BOX
EG	EXISTING GROUND	TC	TOP FACE OF CURB
EX	EXISTING	TEL	TELECOMMUNICATION LINE
FL	SURFACE FLOWLINE	TG	TOP OF GRATE
GB	GRADE BREAK	TS	TRAFFIC SIGNAL
GI	GRATE INLET	TYP	TYPICAL
INV	BOTTOM INSIDE OF PIPE	UB	UTILITY BOX
MH	MANHOLE	UP	UTILITY POLE
OH	OVERHEAD UTILITY LINE	UT	UNDERGROUND UTILITY LINE
PL	PROPERTY LINE	VLT	VAULT
R	RADIUS	W	WATER
S	SLOPE	WM	WATER METER
SD	STORM DRAIN	WS	WATER SERVICE