

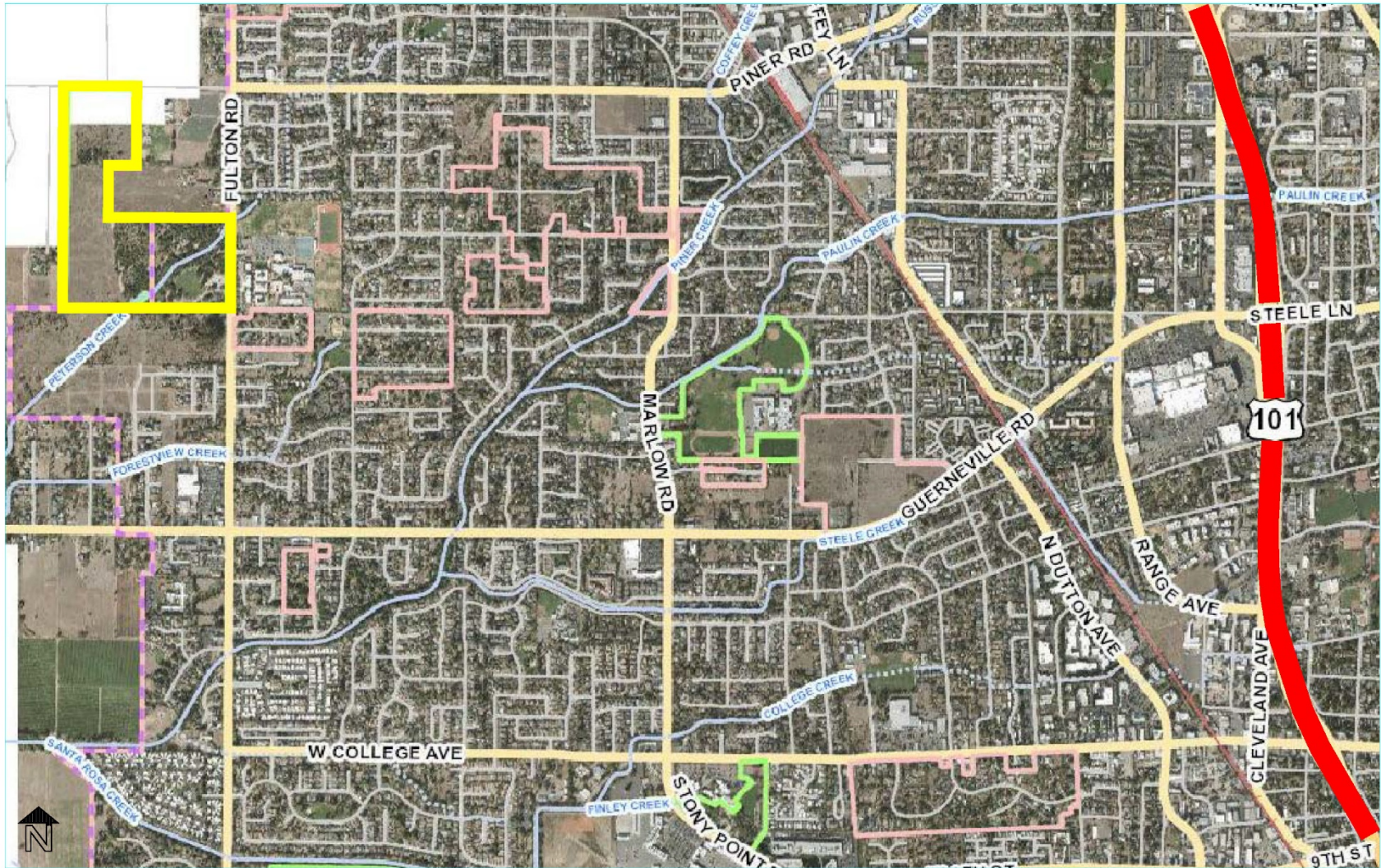


Agreement with City Ventures
Homebuilding LLC, to
allow use of Youth Community Park
for Emergency Vehicle Access
to Fox Hollow Subdivision

City Council Meeting
March 7, 2017

Jen Santos
Deputy Director, Recreation and Parks

LOCATION MAP



= Youth Community Park

BACKGROUND

- Fox Hollow subdivision project is owned by City Ventures Homebuilding, LLC, (City Ventures)
- Fox Hollow is located south of, and adjacent to, Youth Community Park
- Planning Commission approved a modified tentative map for the Fox Hollow project requiring an emergency vehicle access (EVA) through Youth Community Park

BACKGROUND

- The EVA is subject to an executed agreement with City of Santa Rosa and its Recreation & Parks Department
- City Ventures prepared concept plans of the EVA to the satisfaction of the Recreation & Parks Department and Santa Rosa Fire Code
- The EVA is temporary due to future planned ingress egress locations with a separate subdivision

CONCEPT PLAN EVA

EXHIBIT B IS PRELIMINARY IN NATURE. CONSTRUCTION DRAWINGS AND DESIGN SPECIFICATIONS WILL BE PRODUCED FOR SPECIFIC IMPROVEMENTS SHOWN HEREIN. CONSTRUCTION DOCUMENTS WILL BE PREPARED, AS NECESSARY, IN ORDER TO SECURE BUILDING PERMITS FOR SPECIFIC IMPROVEMENTS SHOWN. CONSTRUCTION DOCUMENTS WILL BE PREPARED BY THE DEVELOPER AT NO ADDITIONAL COSTS TO THE CITY.

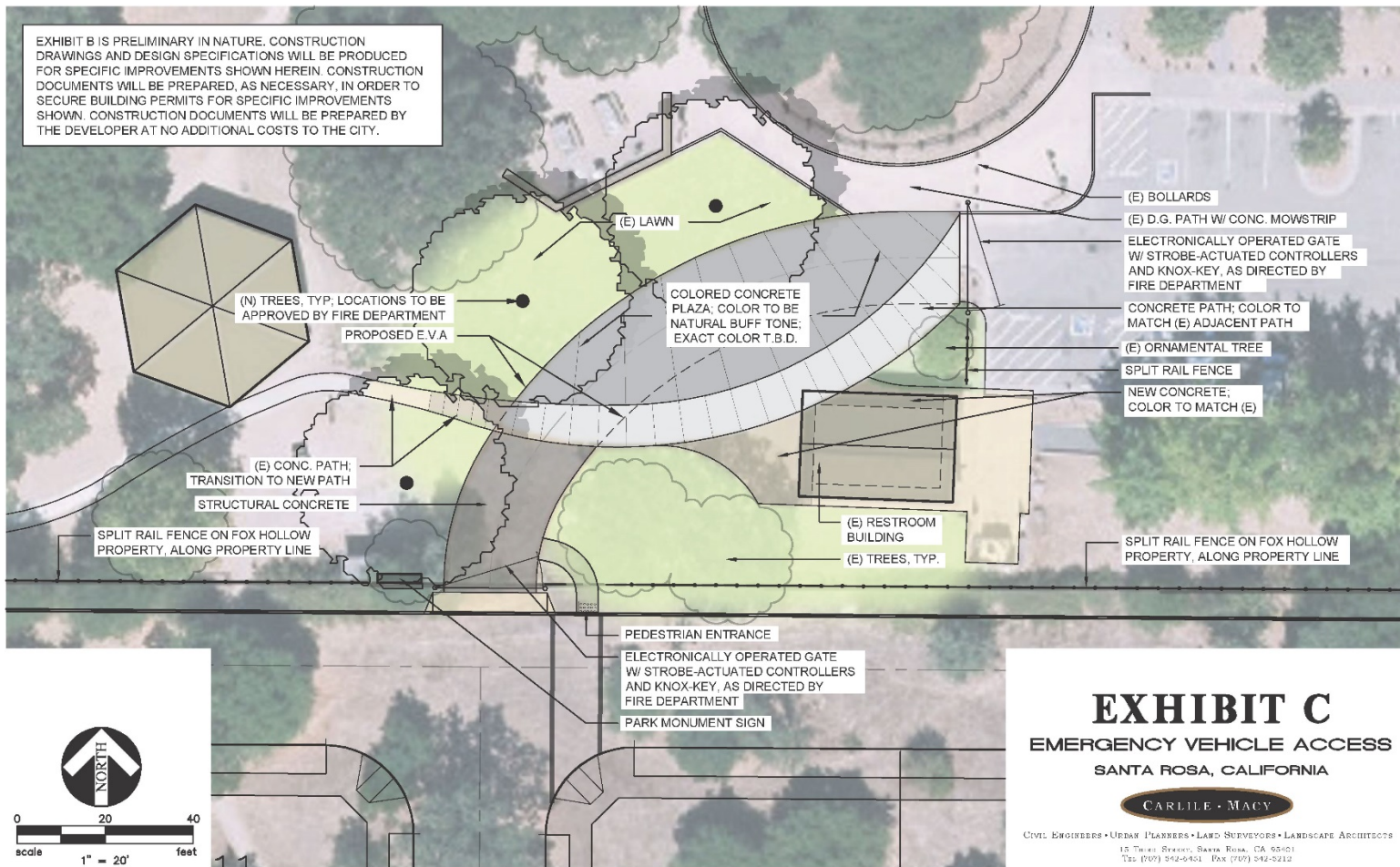


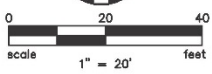
EXHIBIT C EMERGENCY VEHICLE ACCESS SANTA ROSA, CALIFORNIA



CIVIL ENGINEERS • URBAN PLANNERS • LAND SURVEYORS • LANDSCAPE ARCHITECTS
15 THIRD STREET, SANTA ROSA, CA 95401
TEL: (707) 542-6101 FAX: (707) 542-0212

OCTOBER 2015

SHEET 1 OF 1



PROJECT No. 2010010

Copyright © Carlisle & Macy

AGREEMENT

- City Ventures will provide the design, engineering and construction of the EVA at no cost to the City
- The EVA agreement provides for additional park improvements that are of equitable value for the use of the park land - picnic tables, trees, playground safety surface

RECOMMENDATION

- It is recommended by the Recreation and Parks Department that Council, by resolution, approve the Agreement with City Ventures Homebuilding, LLC, to allow use of Youth Community Park for an emergency vehicle access to Fox Hollow subdivision.

Questions?